



Environment and Natural Resources Trust Fund

2022 Request for Proposal

General Information

Proposal ID: 2022-246

Proposal Title: Roberts Bird Sanctuary and Lyndale Gardens

Project Manager Information

Name: Adam Arvidson

Organization: Minneapolis Parks and Recreation Board

Office Telephone: (612) 230-6470

Email: aarvidson@minneapolisparcs.org

Project Basic Information

Project Summary: Environmental restoration and accessibility improvements at Roberts Bird Sanctuary and Lyndale Gardens, with implementation of sustainability practices and chemical reduction at the gardens, to protect the sanctuary and Lake Harriet.

Funds Requested: \$995,000

Proposed Project Completion: December 31 2024

LCCMR Funding Category: Methods to Protect, Restore, and Enhance Land, Water, and Habitat (F)

Project Location

What is the best scale for describing where your work will take place?

Region(s): Metro

What is the best scale to describe the area impacted by your work?

Region(s): Metro

When will the work impact occur?

During the Project

Narrative

Describe the opportunity or problem your proposal seeks to address. Include any relevant background information.

Roberts Bird Sanctuary was designated in 1936. Park Board guidance suggests the need for managing the landscape to better address invasive species, enhance ecological function, and repair infrastructure. Replacement of invasives with habitat-supporting plants that will become self-perpetuating remains a core goal. As a designated sanctuary, enhanced visitorship and access is highlighted by other Park Board plans, with improvements balanced on accessing the sanctuary for education and recreation without overly intruding on habitat. Maintaining the integrity of the ecologic underpinnings of the sanctuary is key, especially for introduced infrastructure.

The Bde Maka Ska-Lake Harriet Master Plan addresses the future of the Lyndale Park gardens, which are adjacent to Roberts Bird Sanctuary. The plan calls for accessibility upgrades to the various gardens, in order to foster education and recreation opportunities for users of all capabilities. The gardens are evolving in terms of horticultural practice, with the Park Board aiming to significantly reduce the use of horticultural chemicals and better manage water applied to garden plantings. In addition, the Rose Garden could reestablish rose trials for northern climate gardens, a function it has pursued on various occasions since its creation in 1907.

What is your proposed solution to the problem or opportunity discussed above? i.e. What are you seeking funding to do? You will be asked to expand on this in Activities and Milestones.

At the Roberts Bird Sanctuary, efforts would be directed to enhancing accessibility to gravel-surfaced pathways and replacement of a failed floating walkway with a more resilient boardwalk, both of which will allow greater access by visitors of all capabilities. Areas with invasive species would be managed and replanted with species appropriate for the periodically inundated wetland forest. New vegetation will be more supportive of the wildlife function of the sanctuary, with a particular focus on birds, insects, and amphibians—which would likely be more prevalent in the sanctuary's many vernal pools if vegetation were modified. Other activities to be pursued include corrections or repairs to failing infrastructure, including fencing and stormwater pipes.

Improvements at the Rose Garden and other Lyndale Park gardens relate to horticultural practices and reductions in horticultural chemicals that are already starting to occur. Gardening staff note that the use of mist irrigation would be a significant improvement which would, as a consequence, allow for reductions in the use of most horticultural chemicals. Other improvements are similar to those in the Bird Sanctuary, where access using new hard-surfaces will increase visitorship across a spectrum of user capabilities.

What are the specific project outcomes as they relate to the public purpose of protection, conservation, preservation, and enhancement of the state's natural resources?

Enhanced accessibility in both areas for persons with disabilities or in need of mobility assistance, as a means of encouraging nature-based recreation.

Roberts Bird Sanctuary:

- Removal of plastic infrastructure so those materials are not available to wildlife as they degrade.
- Introduction of habitat-supporting plantings and associated removal of invasive species.
- Correction of failing fencing and stormwater infrastructure.

Lyndale Park Gardens:

- Reduced reliance on horticultural chemicals in proximity to lake and sanctuary.
- Introduction of more appropriate irrigation methods as a core horticultural practice.
- Restoration of perimeter fencing to eliminate predation of garden species by wildlife.

Activities and Milestones

Activity 1: Accessibility improvements at the Sanctuary and Gardens

Activity Budget: \$361,000

Activity Description:

The removal of the existing failed boardwalk, which is degrading in the landscape and intruding upon the experience of the sanctuary, will be accomplished by contracted labor. Replacement of the boardwalk ensures that a similar experience in those portions of the sanctuary can be perpetuated, except that a more limited expanse of boardwalk resonates with the notion of a landscape reserved for wildlife. Park Board staff will design the replacement boardwalk, reviewing locations and design configuration with sanctuary stakeholders, and reviewing development alternatives for increased access for persons with disabilities. The replacement boardwalk and any access improvements will be constructed using contracted labor.

The Rose Garden and other gardens of Lyndale Park will be reviewed for access limitations following guidance of the Americans with Disabilities Act. Plans for enhancing access will be developed to ensure similar experiences for users regardless of mobility level. Park Board staff will design the improvements and contracted labor will be used to implement the access improvements.

Activity Milestones:

Description	Completion Date
Assessment of conditions related to access including stakeholder involvement	October 31 2022
Completion and bidding of plans for enhanced access	March 31 2023
Implementation of access enhancements	September 30 2024

Activity 2: Sanctuary habitat improvements

Activity Budget: \$114,000

Activity Description:

The sanctuary is comprised of landscapes that have been degraded by the presence of invasive species. The Park Board will revisit areas identified in a previously prepared management plan and generally survey the entire sanctuary to determine zones of encroachment by invasives. The Park Board will work with volunteers and, to the degree practicable, with contracted labor to remove areas of invasive species and restore those areas with habitat supporting native species.

In addition, Park Board staff will update a condition survey of fencing and other infrastructure, primarily stormwater pipes, to ensure they are in fair operating condition, and will continue to incrementally replace areas of failure. Park Board staff will develop plans for additional fence replacement and stormwater pipe replacements to ensure integrity in the bounding fence exist and operational capacity remains in stormwater pipes in an effort to best manage water movement through the sanctuary. Improvements, where needed will be bid according to plans and contracted labor. Similar to the landscape improvements, these efforts will better align the operations of the sanctuary with ecological integrity.

Activity Milestones:

Description	Completion Date
Assessment of landscape and infrastructure condition	October 31 2022
Completion of landscape restoration planning	March 31 2023

Completion and bidding of plans for habitat-impacting infrastructure improvements	March 31 2023
Construction of infrastructure upgrades	October 31 2023
Completion of landscape restoration and native species planting	October 31 2024

Activity 3: Enhanced environmental garden practices

Activity Budget: \$520,000

Activity Description:

Improvements to horticultural practices, many of which have already been initiated, are targeted to lessen the use of chemicals and standardize ecologically sustainable methods of perpetuating the attraction of the gardens. Park Board staff will identify the best methods of reducing chemical use aligned with more strategic and appropriate irrigation of garden plantings, especially roses in the Rose Garden. Park Board staff will also develop, in concert the consulting expertise, a new irrigation system for the gardens meeting best methods identified by staff. Park Board staff will bid the irrigation improvements for implementation using contracted labor and will modify applications of horticultural chemicals, creating a best practices guide based on their success with irrigation practices.

Fencing will be assessed as method to limit plant predation by wildlife, especially in the Rose Garden as it tends to be quite susceptible. Fence plans will be developed by Park Board staff and consultants and shared with stakeholders. Park Board staff will bid the fence improvements, awarding construction to qualified labor. The efforts directed to fencing improvements will restore a condition common to the Rose Garden for several decades after its inception but no longer present in the garden's landscape.

Activity Milestones:

Description	Completion Date
Assess horticultural practices and identify environmental strategies	December 31 2022
Completion and bidding of plans for fencing and irrigation improvements	March 31 2023
Initiate transition to environmentally sound horticultural practices	March 31 2023
Construction of fencing and irrigation improvements	October 31 2023
Complete standardization of environmentally sound horticultural practices	December 31 2024

Long-Term Implementation and Funding

Describe how the results will be implemented and how any ongoing effort will be funded. If not already addressed as part of the project, how will findings, results, and products developed be implemented after project completion? If additional work is needed, how will this be funded?

Long term maintenance and management will be performed by the Minneapolis Park and Recreation Board as part of its overall natural resources maintenance programs. Such activities do include paid staff work, volunteers, and partnerships with nonprofit organizations. Maintenance and management activities are funded by the MPRB tax levy and are supported by the state and Metropolitan Council through regional parks operations and maintenance (O&M) funding. Additional work necessary after initial construction will be covered by the contractor's warranty and will not require additional funding. Additional restoration and enhancement work after the warranty period will be funded by MPRB.

Other ENRTF Appropriations Awarded in the Last Six Years

Name	Appropriation	Amount Awarded
Invasive Carp Management Research in Lake Nokomis Subwatershed	M.L. 2016, Chp. 186, Sec. 2, Subd. 06g	\$189,000
Expanding Nature Knowledge and Experience with New Interactive Exhibits at North Mississippi Regional Park	M.L. 2018, Chp. 214, Art. 4, Sec. 2, Subd. 05h	\$500,000

Project Manager and Organization Qualifications

Project Manager Name: Adam Arvidson

Job Title: Director of Strategic Planning

Provide description of the project manager's qualifications to manage the proposed project.

Mr. Arvidson is MPRB's Director of Strategic Planning, in which role he is responsible for large-scale planning of public lands. He is a registered landscape architect with 20+ years of experience in the public and private sector and has worked on numerous habitat and environment projects, including several funded through LCCMR and the Lessard-Sams Council. He is currently the project manager for the MPRB's Ecological Systems Plan and is also leading the agency's effort to create new environmentally sound master plans for each neighborhood park.

Organization: Minneapolis Parks and Recreation Board

Organization Description:

With 179 park properties totaling nearly 6,800 acres of land and water, the Minneapolis Park and Recreation Board (MPRB) provides places and recreation opportunities for all people to gather, celebrate, contemplate, and engage in activities that promote health, well-being, community, and the environment. Each year, approximately 20 million visits are made to the nationally acclaimed Minneapolis park system. Its urban forests, natural areas, and waters endure and captivate. Its Grand Rounds National Scenic Byway, neighborhood parks, recreation centers, and diversified programming have made the Minneapolis park system an important component of what makes Minneapolis a great place to live, play and work.

Budget Summary

Category / Name	Subcategory or Type	Description	Purpose	Gen. Ineligible	% Benefits	# FTE	Classified Staff?	\$ Amount
Personnel								
Design Project Manager		Provide design expertise and administration for all construction-related project tasks.			25%	0.3		\$45,000
							Sub Total	\$45,000
Contracts and Services								
Technical design consultant	Professional or Technical Service Contract	Design and preparation of construction plans for boardwalk, accessibility improvements, fencing, stormwater infrastructure, and irrigation. Consultant will be selected through a competitive process.				0		\$54,000
Construction contractor: hardscape and infrastructure	Professional or Technical Service Contract	A contractor will be selected through a competitive process to construct all accessibility and utility improvements, including boardwalk demolition, pathway and boardwalk construction, and stormwater infrastructure construction				-		\$351,000
Construction contractor: restoration	Professional or Technical Service Contract	A contractor will be selected through a competitive process to install all restoration activities within the Sanctuary, including invasive species removal and native plantings. The contractor may be assisted by volunteers and/or MPRB staff. This contractor could be the Minnesota Conservation Corps.				-		\$40,000
Construction contractor: fencing	Professional or Technical Service Contract	A contractor will be selected through a competitive bid process to install all fencing at the Sanctuary and Gardens, including removal or repair of existing fencing.				-		\$384,000
Construction contractor: irrigation	Professional or Technical Service Contract	A contractor will be selected through a competitive process to upgrade and install the irrigation system at the Rose Garden.				-		\$121,000
							Sub Total	\$950,000
Equipment, Tools, and Supplies								

							Sub Total	-
Capital Expenditures								
							Sub Total	-
Acquisitions and Stewardship								
							Sub Total	-
Travel In Minnesota								
							Sub Total	-
Travel Outside Minnesota								
							Sub Total	-
Printing and Publication								
							Sub Total	-
Other Expenses								
							Sub Total	-
							Grand Total	\$995,000

Classified Staff or Generally Ineligible Expenses

Category/Name	Subcategory or Type	Description	Justification Ineligible Expense or Classified Staff Request
---------------	---------------------	-------------	--

Non ENRTF Funds

Category	Specific Source	Use	Status	Amount
State				
			State Sub Total	-
Non-State				
In-Kind	MPRB tax levy-funded staff time and activities	MPRB environmental and maintenance staff will work with contractors to review restoration activities and provide initial and ongoing maintenance. MPRB staff will also coordinate volunteers if necessary.	Secured	\$50,000
Cash	Community fundraising	Fundraising in underway by community group Voices for the Roses, for contributions to support fencing, irrigation, and accessibility.	Pending	\$250,000
			Non State Sub Total	\$300,000
			Funds Total	\$300,000

Acquisition and Restoration

Parcel List

Name	County	Site Significance	Activity	Acres	Miles	Estimated Cost	Type of Landowner	Easement or Title Holder	Status of Work
PID: 0902824130001	Hennepin	The site is currently owned by the Minneapolis Park and Recreation Board and is a mix of forest and forested wetlands of moderate quality, as well as formal gardens and mown turf. The site is heavily visited as part of the Minneapolis Chain of Lakes Regional Park, which sees more than 7 million visits per year.	Restoration	50	-	-	Public	Minneapolis Park and Recreation Board	In progress
Totals				50	0	-			

Restoration

1. Provide a statement confirming that all restoration activities completed with these funds will occur on land permanently protected by a conservation easement or public ownership.

All restoration activities will occur on land permanently in public ownership (owned by the Minneapolis Park and Recreation Board).

2. Summarize the components and expected outcomes of restoration and management plans for the parcels to be restored by your organization, how these plans are kept on file by your organization, and overall strategies for long-term plan implementation.

Components of the restoration and management plan will include a description of current conditions, description of a target restoration communities, which would most likely be wetland, forested wetland, and upland forest; a timeline for restoration; and guidance for ongoing management of the restored areas. The plan will be kept both in MPRB staff project files and in the MPRB archive, as well as posted publicly on the MPRB website.

3. Describe how restoration efforts will utilize and follow the Board of Soil and Water Resources “Native Vegetation Establishment and Enhancement Guidelines” in order to ensure ecological integrity and pollinator enhancement.

MPRB will fully utilize BWSR’s guidance document. Because this project area has "Some Intact Ecological Characteristics," we expect that the recommended number of plant species will be on highest end of that row according to the “Minimum Recommended Number of Species” matrix (p.6). The project will utilize and source seed as recommended for the project location (Ecological Section 8, Big Woods Subsection). Primary project type guidance will come from the sections on wetland restoration (p. 34) and forests/woodlands (p. 45).

4. Describe how the long-term maintenance and management needs of the parcel being restored with these funds will be met and financed into the future.

Long term maintenance and management will be performed by the Minneapolis Park and Recreation Board as part of its overall natural resources maintenance programs. Such activities do include paid staff work, volunteers, and partnerships with nonprofit organizations. Maintenance and management activities are funded by the MPRB tax levy.

5. Describe how consideration will be given to contracting with Conservation Corps of Minnesota for any restoration activities.

Prior to the commencement of construction activities, the project manager will contact the Conservation Corps of Minnesota to determine desire and availability to perform applicable work.

6. Provide a statement indicating that evaluations will be completed on parcels where activities were implemented both 1) initially after activity completion and 2) three years later as a follow-up. Evaluations should analyze improvements to the parcel and whether goals have been met, identify any problems with the implementation, and identify any findings that can be used to improve implementation of future restoration efforts at the site or elsewhere.

MPRB staff will evaluate the habitat restoration after initial construction activity. Those staff will provide ongoing evaluation and management during the course of their normal work with natural areas across the MPRB system.

Attachments

Required Attachments

Map

File: [6969a0d1-745.pdf](#)

Alternate Text for Map

Page from the Lake Harriet Master Plan showing planned improvements at Roberts Bird Sanctuary and the Lyndale Park Gardens...

Board Resolution or Letter

Title	File
Resolution 2021-149	6f7deec5-b5b.pdf

Administrative Use

Does your project include restoration or acquisition of land rights?

Yes: Restoration,

Does your project have potential for royalties, copyrights, patents, or sale of products and assets?

No

Do you understand and acknowledge IP and revenue-return and sharing requirements in 116P.10?

N/A

Do you wish to request reinvestment of any revenues into your project instead of returning revenue to the ENRTF?

N/A

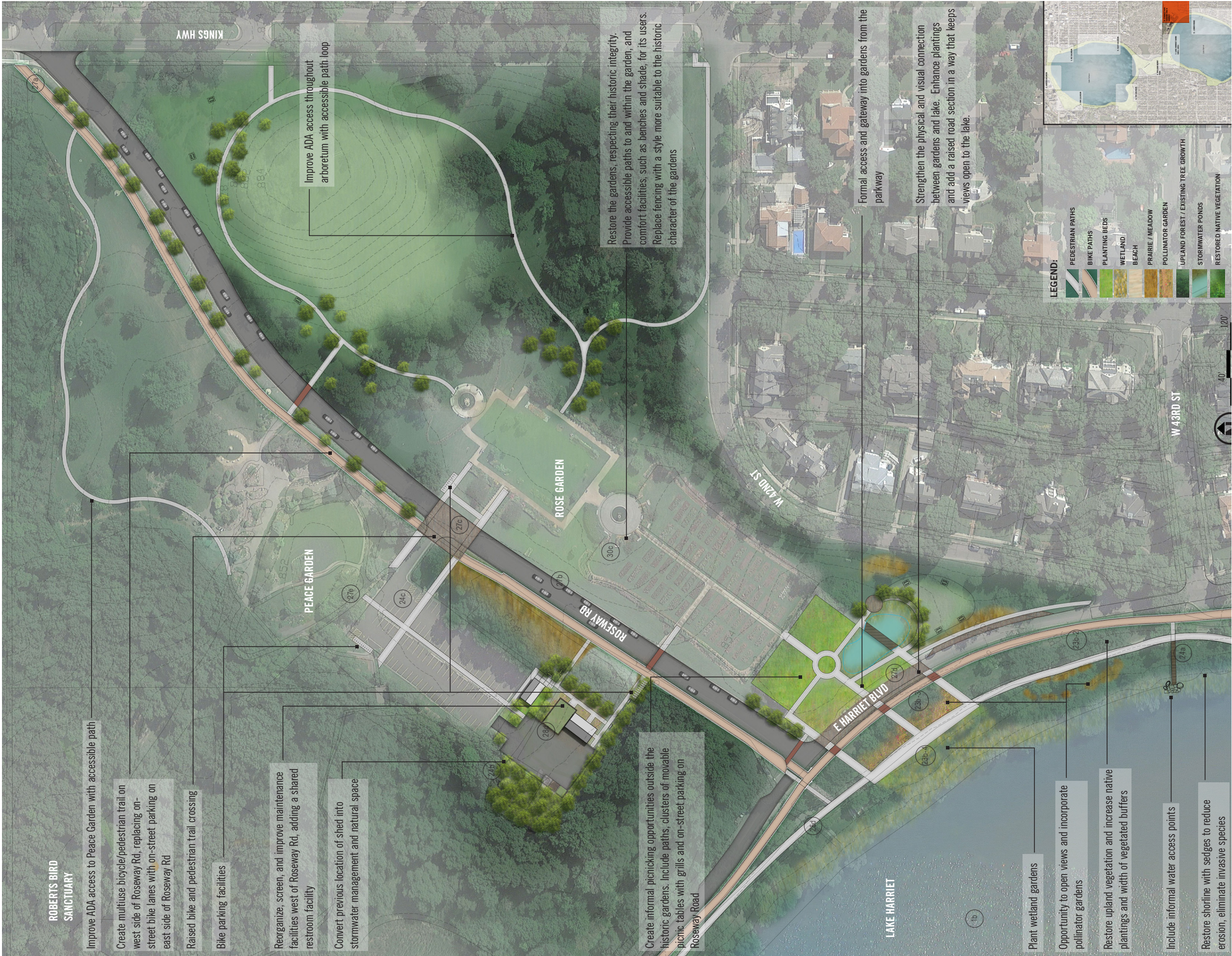
Does your project include original, hypothesis-driven research?

No

Does the organization have a fiscal agent for this project?

No

LYNDALE PARK FOCUS AREA



Lyndale Park - Lake Harriet Focus Area Recommendations:

1. Add a multi-use two-way trail west of Roseway Road.
2. On Roseway Road, increase on-street parking that more directly serves the gardens.
3. Strengthen the physical and visual connection between historic rose gardens and lake including enhanced plantings and a raised road section between the lake trails and gardens. Keep views open to the lake.
4. As the crabapple bosque or grove at south side of gardens ages and declines, remove the trees to create a formal and historically appropriate access and gateway into gardens from the parkway.
5. Restore the gardens, respecting their historic integrity. Provide accessible paths to and within the garden, and comfort facilities, such as benches and shade, for park visitors. Replace fencing with a style more suitable to the historic character of the gardens.
6. Reorganize and improve maintenance facilities west of Roseway Road, a shared restroom facility on the south end of the Roberts Bird Sanctuary parking lot. Restore unused areas to bird habitat.
7. Expand and improve the garden experience with added arboretum features and interpretation. Add accessible paths.

