



# Environment and Natural Resources Trust Fund

## 2021 Request for Proposal

### General Information

**Proposal ID:** 2021-193

**Proposal Title:** Restoration of Riverside Park

### Project Manager Information

**Name:** Reta Dahlen

**Organization:** City of Long Prairie

**Office Telephone:** ( ) -

**Email:** retadahlen@yahoo.com

### Project Basic Information

**Project Summary:** Project will mitigate the effects of climate change by restoring water retentive capabilities to 7.68 acres on the Long Prairie River while also creating both recreational and educational opportunities.

**Funds Requested:** \$156,000

**Proposed Project Completion:** 2023-11-30

**LCCMR Funding Category:** Small Projects (H)

**Secondary Category:** Air Quality, Climate Change, and Renewable Energy (E)

### Project Location

**What is the best scale for describing where your work will take place?**

Region(s): Central

**What is the best scale to describe the area impacted by your work?**

Region(s): Central

**When will the work impact occur?**

During the Project and In the Future

## Narrative

### **Describe the opportunity or problem your proposal seeks to address. Include any relevant background information.**

Riverside Park was designed by the Minnesota DOT and constructed by the WPA in 1936. The land was donated by the owner of the packing plant. A small dam was built on the Long Prairie River. Water was diverted into a brook which was dug by WPA workers to deliver water to 2 ponds dug for ice skating. The brook then delivered overflow back to the river. Three bridges were constructed on paths which crossed the brook. The Sportsman's Club financed the building of a lodge made of fieldstone, and a fieldstone tower provided light for evening skating. During WWII, the park flooded. Neither men nor machine power were available to maintain the park. The land was sold to a private individual who used the ponds as a dump for demolition debris. The brook filled with sediment and tree roots. The stonework became a canvas for graffiti, and the ground became littered with trash. The land changed hands several times. Several local groups organized clean-ups. The most recent owner offered to give the land to the city if funding became available for restoration, and 2 years ago, following his death, his family gave the land back to the city.

### **What is your proposed solution to the problem or opportunity discussed above? i.e. What are you seeking funding to do? You will be asked to expand on this in Activities and Milestones.**

Today the ponds at Riverside present an opportunity to offset predicted extreme events of climate change by providing a water reservoir. The brook will be cleaned, and both sediment and demolition debris will be removed from the ponds so that the park can retain water and mitigate future flooding. Two culverts will be placed where park paths cross the brook. Park paths will be cleared and leveled. A path along the river will be built for hikers and bikers. Plant and animal life in the park will be inventoried; invasive plant species identified and both native plant species and pollinators will be encouraged.

### **What are the specific project outcomes as they relate to the public purpose of protection, conservation, preservation, and enhancement of the state's natural resources?**

The outcomes of this project will be to restore shoreline vegetation and to enhance the water retention of this area while providing a nature area for public hiking and biking in the summer and ice skating or x-country skiing in the winter.

## Activities and Milestones

### Activity 1: Restore the Original Park Paths

**Activity Budget:** \$37,000

**Activity Description:**

The original park paths were 12 feet wide and provided an entrance and exit loop from Riverside Drive as well as a path to the Sportsman's Lodge. During the past 84 years, trees and bushes have grown on the paths in some places while dirt and demolition debris has been dumped in other places. These paths will be cleared and leveled. Approaches to Riverside Drive will be provided. Two culverts will be installed to allow the flow of water under the paths.

**Activity Milestones:**

Description	Completion Date
Install 2 culverts to allow the flow of water under the paths.	2022-09-30
Remove piles of dirt and debris from the paths.	2022-09-30
Level the original paths.	2022-10-31

### Activity 2: Clear the Waterways and Ponds.

**Activity Budget:** \$64,000

**Activity Description:**

During the last 84 years, the brook leading to the ponds and back to the river has partially filled with sediment and tree roots. The ponds have partially filled with sediment and demolition debris. The brook will be dredged. All debris and dirt will be removed from the ponds.

**Activity Milestones:**

Description	Completion Date
Clean the brook.	2022-09-30
Remove sediment from the south pond.	2023-09-30
Remove sediment and demolition debris from the north pond.	2023-09-30

### Activity 3: Construction of a path/boardwalk along the river.

**Activity Budget:** \$55,000

**Activity Description:**

The MN Conservation Corps will spend 6 weeks constructing a path or boardwalk along the river, removing invasive species and planting native species in the park.

**Activity Milestones:**

Description	Completion Date
Removal of invasive species and planting native species.	2023-10-31
Construction of 5' wide path or boardwalk along the river.	2023-10-31

## Long-Term Implementation and Funding

**Describe how the results will be implemented and how any ongoing effort will be funded. If not already addressed as part of the project, how will findings, results, and products developed be implemented after project completion? If additional work is needed, how will this be funded?**

Private contractors will be hired to remove the demolition debris, reconstruct the original paths and to clean the waterway and ponds. The CC of MN will build a riverwalk and restore native vegetation. Riverside Park will be maintained by the public works department of the City of Long Prairie and managed by the Long Prairie Park Board with seasonal help from local volunteers.

## Project Manager and Organization Qualifications

**Project Manager Name:** Reta Dahlen

**Job Title:** Member of the Long Prairie Park Board

**Provide description of the project manager's qualifications to manage the proposed project.**

As a former teacher of earth science, I am interested in actions our community can take to mitigate climate change.

As a member of the park board, I am interested in providing recreational opportunities for our citizens.

As an avid gardener, I am interested in learning what vegetation should be restored to this former parkland.

As a member of the community, I am interested in seeing the graffiti, demolition debris and trash removed from this area.

Finally, because I am retired and live within 3 blocks of this park, I am available for conferences with representatives from the DNR, the CC, Water and Soil, or contractors.

**Organization:** City of Long Prairie

**Organization Description:**

Long Prairie, which was named after the river flowing through the city, is located in central Minnesota and is bordered on the south by beautiful Lake Charlotte. One of the oldest settlements in the state, it began 175 years ago in 1845 when it was selected by the U.S. government as the site of the Winnebago Indian Agency. Later Long Prairie became the county seat of Todd County because it was centrally located at the junctions of US Hwy 71, State Hwy 27 and County Hwy 287. The city today offers quality medical facilities, diverse industrial opportunities, excellent school systems, and a variety of businesses and recreational activities. Today's current population of 3,597 is almost as diverse as the original community with over a quarter of our citizens speaking Spanish. The rural area around Long Prairie is home to both small and large farms, some lake homes and a large community of Amish farmers and businesses.

## Budget Summary

Category / Name	Subcategory or Type	Description	Purpose	Gen. Ineligible	% Benefits	# FTE	Classified Staff?	\$ Amount
<b>Personnel</b>								
							<b>Sub Total</b>	-
<b>Contracts and Services</b>								
Aquatic Restoration Service	Professional or Technical Service Contract	This service will clean the ponds.				0		\$45,000
J & J Dirtworks	Professional or Technical Service Contract	This company will load & haul concrete debris from site to land fill, reconstruct original paths, install 2 culverts and clean the waterways leading from the river to the ponds and back to the river as well as cleaning the waterway between the ponds.				0		\$54,000
Minnesota Conservation Corps	Sub award	The Conservation Corps will build approximately 1200' of path or boardwalk along the river. They will also be planting shoreline vegetation and removing invasive vegetation. This estimate includes labor and materials.				0		\$55,000
							<b>Sub Total</b>	<b>\$154,000</b>
<b>Equipment, Tools, and Supplies</b>								
	Equipment	1 Wood Chipper	Used for chipping brush or branches when clearing paths					\$2,000
							<b>Sub Total</b>	<b>\$2,000</b>
<b>Capital Expenditures</b>								
							<b>Sub Total</b>	-
<b>Acquisitions and Stewardship</b>								
							<b>Sub Total</b>	-

<b>Travel In Minnesota</b>								
							<b>Sub Total</b>	-
<b>Travel Outside Minnesota</b>								
							<b>Sub Total</b>	-
<b>Printing and Publication</b>								
							<b>Sub Total</b>	-
<b>Other Expenses</b>								
							<b>Sub Total</b>	-
							<b>Grand Total</b>	<b>\$156,000</b>

Classified Staff or Generally Ineligible Expenses

Category/Name	Subcategory or Type	Description	Justification Ineligible Expense or Classified Staff Request
---------------	---------------------	-------------	--------------------------------------------------------------

Non ENRTF Funds

Category	Specific Source	Use	Status	Amount
<b>State</b>				
			<b>State Sub Total</b>	-
<b>Non-State</b>				
			<b>Non State Sub Total</b>	-
			<b>Funds Total</b>	-



## Acquisition and Restoration

### Parcel List

Name	County	Site Significance	Activity	Acres	Miles	Estimated Cost	Type of Landowner	Easement or Title Holder	Status of Work
36-4024100	Todd	Flood plain with potential for natural habitat. water retention & recreational opportunities.	Restoration	7.68	-	-	Public	City of Long Prairie	Has not begun
<b>Totals</b>				<b>7.68</b>	<b>0</b>	<b>-</b>			

## Restoration

**1. Provide a statement confirming that all restoration activities completed with these funds will occur on land permanently protected by a conservation easement or public ownership.**

All restoration activities completed with these funds will occur on land permanently protected by public ownership.

**2. Summarize the components and expected outcomes of restoration and management plans for the parcels to be restored by your organization, how these plans are kept on file by your organization, and overall strategies for long-term plan implementation.**

The water retentive capability of the ponds will be restored. The original paths through the park will be cleared and leveled and native vegetation will be established or enhanced. The restoration of this park will provide an opportunity for the public to observe native plants and animals in a natural environment along a peaceful river. The plans for the restoration of the brook, ponds and trails will be kept on file by the City of Long Prairie.

**3. Describe how restoration efforts will utilize and follow the Board of Soil and Water Resources “Native Vegetation Establishment and Enhancement Guidelines” in order to ensure ecological integrity and pollinator enhancement.**

BWSR Vegetation Specialist/Landscape Ecologist will help local resource staff make informed decisions about appropriate shoreline vegetation to be planted or encouraged. Ash trees in the park will be monitored for Emerald Ash Borer.

**4. Describe how the long-term maintenance and management needs of the parcel being restored with these funds will be met and financed into the future.**

In the future, Riverside Park will be managed by the Long Prairie Park Board and maintained by the Long Prairie Public Works Department with guidance from Todd County Soil and Water personnel and the area hydrologist from the DNR.

**5. Describe how consideration will be given to contracting with Conservation Corps of Minnesota for any restoration activities.**

The City of Long Prairie will contract with the CCM to build a trail along the river and to plant native species.

**6. Provide a statement indicating that evaluations will be completed on parcels where activities were implemented both 1) initially after activity completion and 2) three years later as a follow-up. Evaluations should analyze improvements to the parcel and whether goals have been met, identify any problems with the implementation, and identify any findings that can be used to improve implementation of future restoration efforts at the site or elsewhere.**

An evaluation of the restoration activities will be completed in 2023 and again in 2026. The evaluations will report on improvements to the paths and ponds as well as the establishment or enhancement of native vegetation. The USGS stream monitoring station at Long Prairie, directly across the river from Riverside Park, will provide an indication of improvement in the water retentive capabilities of the ponds.

## Attachments

### Required Attachments

#### *Map*

File: [b4ba7d36-0b6.pdf](#)

#### *Alternate Text for Map*

This map shows a satellite view of Riverside Park in 2018.

### Optional Attachments

#### *Support Letter or Other*

Title	File
Resolution Authorizing Submission	<a href="#">076895f7-c51.pdf</a>

## Administrative Use

**Does your project include restoration or acquisition of land rights?**

Yes: Restoration,

**Does your project have patent, royalties, or revenue potential?**

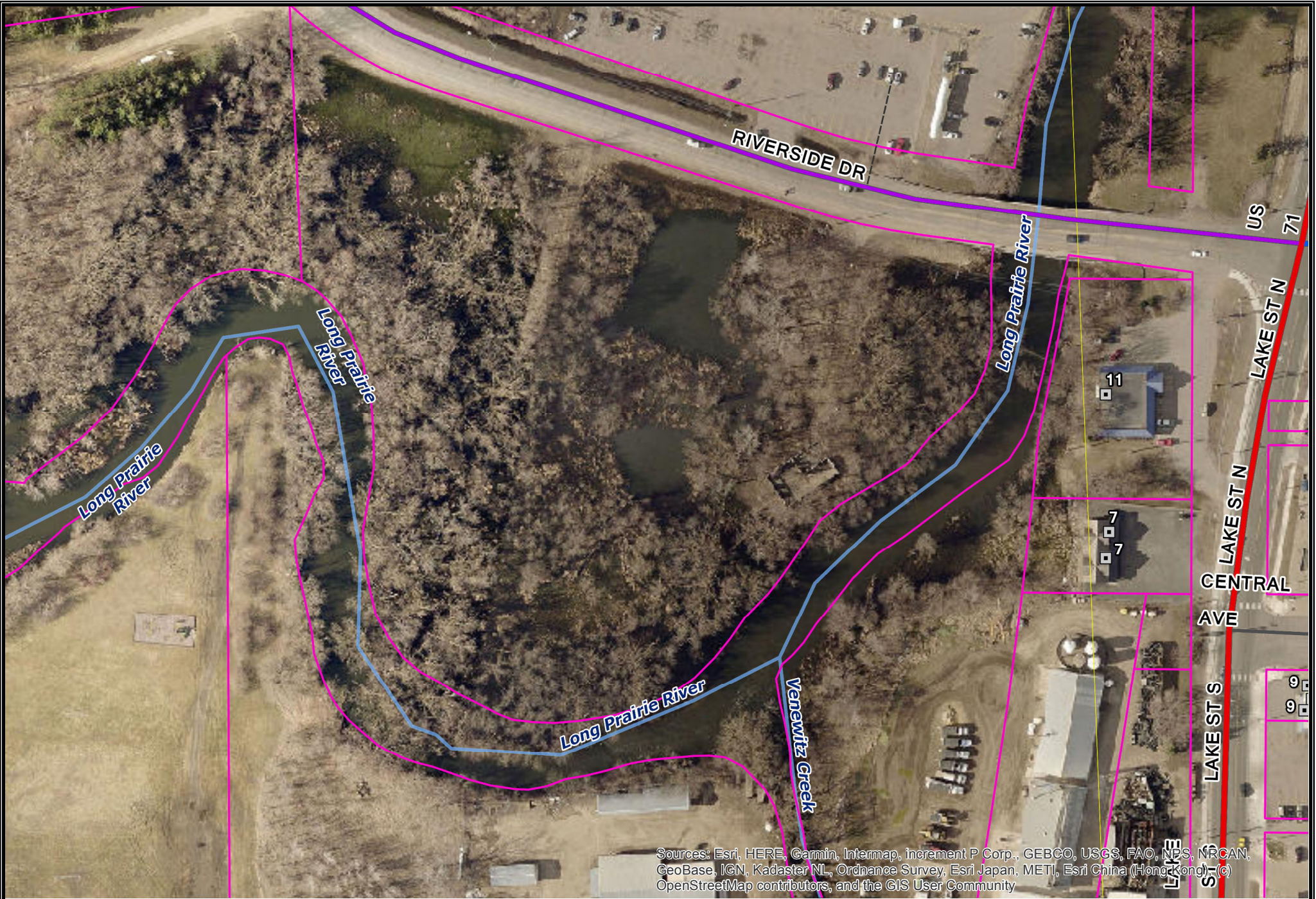
No

**Does your project include research?**

No

**Does the organization have a fiscal agent for this project?**

No

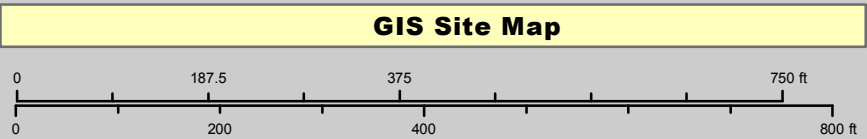


Sources: Esri, HERE, Garmin, Intermap, increment P Corp., GEBCO, USGS, FAO, NPS, NRCAN, GeoBase, IGN, Kadaster NL, Ordnance Survey, Esri Japan, METI, Esri China (Hong Kong), (c) OpenStreetMap contributors, and the GIS User Community



Todd County GIS  
 215 1st Ave S, Ste 102  
 Long Prairie, MN 56347  
 (Office) 320-732-4248

Printed on:  
 Wednesday, April 01, 2020



The Todd County GIS & Land Services Department has made every effort to provide the most accurate and up-to-date information available in this publication and cannot be held responsible for any unforeseen errors or omissions. If the recipient wishes to locate parcel corners and property lines, employ the services of a Registered Land Surveyor.