

**Environment and Natural Resources Trust Fund
2017 Request for Proposals (RFP)**

Project Title:

ENRTF ID: 175-G

Mississippi Blufflands State Trail Red Wing River Walk

Category: G. Land Acquisition, Habitat and Recreation

Total Project Budget: \$ 1,840,000

Proposed Project Time Period for the Funding Requested: 2 years, July 2017 – June 2019

Summary:

Design and construction of a three-quarter mile segment of the Mississippi Blufflands State Trail from Barn Bluff Park to Colvill Park in Red Wing.

Name: Jay Owens

Sponsoring Organization: City of Red Wing

Address: 315 Fourth St W
Red Wing MN 55066

Telephone Number: (651) 385-3625

Email jay.owens@ci.red-wing.mn.us

Web Address <http://www.red-wing.org>

Location

Region: Southeast

County Name: Goodhue

City / Township: Red Wing

Alternate Text for Visual:

The map provides an aerial regional topographical view showing the regional connections of the trail alignment with existing State and Regional Trails and highlights the future possible Mississippi Blufflands State Trail corridor. An inset map provides a close up view of the connecting local, regional and state trails within the City of Red Wing. The inset map also shows the developed 1.75 miles of trail between the Cannon Valley Trail to Levee Park; the 1.1 miles of future trail development between Levee Park and Barn Bluff Park; and, the subject area of the proposal, the trail segment between Barn Bluff Park and Colvill Park.

_____ Funding Priorities	_____ Multiple Benefits	_____ Outcomes	_____ Knowledge Base
_____ Extent of Impact	_____ Innovation	_____ Scientific/Tech Basis	_____ Urgency
_____ Capacity	_____ Readiness	_____ Leverage	_____ TOTAL _____%



Environment and Natural Resources Trust Fund (ENRTF)

2017 Main Proposal

Project Title: Mississippi Blufflands State Trail Red Wing River Walk

PROJECT TITLE: 2017 Mississippi Blufflands Trail – Red Wing River Walk

The Red Wing portion of the Mississippi Blufflands Trail corridor includes 3.6 miles of Mississippi riverfront recreational trail. Completing the trail will create the foundation for a unique, regionally significant and safe non-motorized, 17 mile State Trail corridor between communities of Red Wing and Lake City connecting regional and state recreational facilities along the US Highway 61 Scenic Byway corridor and the Mississippi Riverfront.

- The State Trail corridor, Red Wing to Lake City, was legislatively authorized in May 2015.
- Three trail segments are within Red Wing city limits; the City has pursued Capital Investment funding since 2010 for the trail segments.
- **Segment one, 1.75 miles**, Cannon Valley Trail to Levee Park is developed; **Segment two, 1.1 miles**, Levee Park to Barn Bluff Park is a future development; and, **Segment three, .75 mile**, the subject of this project proposal, is a three-quarter mile segment, Barn Bluff Park to Colvill Park.

The City of Red Wing initiated planning and preliminary design for the Red Wing riverfront section of the trail corridor (Cannon Valley Trail to Red Wing's Colvill Park) in 2005. About one-half of the 3.6 mile trail is developed. In February 2016, the City met with MN DNR state trail planning & development staff. It was mutually understood that for the developed trail segments within the City of Red Wing, the City will work with the DNR towards an agreement for the City to assume responsibilities for the long term sustainability, maintenance and future capital renewal costs of the trail and facilities within Red Wing's city limits.

The cost for a riverfront alignment of the trail is higher than normal recreational trail development costs. The trail alignment poses significant, but achievable, design challenges. The City was successful in obtaining \$480,000 in Federal Scenic Byway funding in 2015 for the trail construction. The City will lose the Scenic Byway grant after September 2018 if it remains un-obligated. The construction of this trail segment will connect two significant regional recreational parks; Barn Bluff Park and Colvill Park.

The Mississippi River Trail (MRT) is Minnesota's first designated, national U.S. Bike Route. The Red Wing River Walk segment of the Mississippi Blufflands State Trail will be MRT designated upon completion.

II. PROJECT ACTIVITIES AND OUTCOMES

Activity 1: Update Phase I Environmental Assessment and obtain permits and easements; Final Engineering Design Plans & Specifications, Construction and Project Management

Budget: \$527,000

Description: Procure Professional/Technical Services for engineering design in accordance with MnDOT's Bikeway Facility Design Manual, FHWA Non-motorized Design Guidance and the ASHTO guidelines. Includes: bidding services, construction and project management/administration and the update the 2010 Environmental Assessment, and assistance in obtaining all permits and temporary construction and permanent easements.

Outcome	Completion Date
1. Initiate the Final Design and Specification Development Process	July 2017
2. Complete Phase I Environmental Assessment Updated - \$15,000	October 2017
3. Obtain MnDOT ROW Permit - \$0	December 2017
4. Obtain Easements & Const. Permit from CP Railway, approximately 1,800 feet - \$85,000	February 2018
5. Complete Project Plans & Specifications (Bid Documents) - \$170,800	February 2018
6. Bid Letting for Project	April 2018
7. Construction Contract Award	May 2018
8. Construction Administration and Management - \$256,200	June 2019



Environment and Natural Resources Trust Fund (ENRTF)

2017 Main Proposal

Project Title: Mississippi Blufflands State Trail Red Wing River Walk

Activity 2: Construct three-quarter miles of 12 foot wide Recreational Trail

Budget: \$2,964,000

Description: The trail construction from Barn Bluff Park to Colvill Park will include a 10 foot wide bituminous surface with 2 foot wide gravel shoulders including: rock excavation, base preparation, grading, engineered fill, gravel base, retaining walls, surface water management, fencing/railing, lighting, wayfinding signage and interpretive panels, landscaping, and seeding.

Outcome	Completion Date
1. Initiate project Construction	May 2018
2. Complete Project Construction of the Mississippi Blufflands Trail, Red Wing River Walk Trail, from Barn Bluff Park to Colvill Park in Red Wing, MN	June 2019

III. PROJECT STRATEGY

A. Project Team/Partners

The City of Red Wing will own, operate and maintain the project. The City is responsible for procurement, environmental review, project design, construction management and administration, financial management and public involvement. The project is within the City's CIP (Capital Improvement Program) with \$529,000 of city funds budgeted and \$480,000 of Federal Highway Administration Scenic Byway funding committed for the project. The City of Red Wing will be the only designated recipient of the ENRTF funding.

The MN DNR Parks & Trails Division Planning and Trail Development staff will be involved in an advisory role and for technical review and comment during plan development. In addition, funding applications will be made to the DNR for the Federal Recreational Trail Program in 2017 for \$150,000 in grant funding with the local and other federal funds obligated to the project being used as funding leverage.

The Audubon Society of Minnesota has been a partner in the development of the City's Riverfront Redevelopment Plan, the precursor to the River Town Renaissance initiative, providing technical assistance and guidance for the development of scenic bird viewing areas.

The US Fish & Wildlife Service has been involved with the city in the development of habitat management plans through the Partners for Fish and Wildlife Program. We expect that the USFWS may provide technical assistance and guidance as the project develops.

Live Healthy Red Wing (LHRW) is a team collaborator for wayfinding, signage and publicity for the project.

Philanthropic and Community Giving. Red Wing has a history of philanthropic and community giving for major, legacy community and area betterment projects. At least one or more of the three major community philanthropic organizations, The Red Wing Area Fund, The Jones Family Fund, and/or The Marshall Family Fund could be involved with a capital campaign.

B. Project Impact and Long-Term Strategy

The City's goals and strategies in its trail and park development mirror the Minnesota's State Comprehensive Outdoor Recreation Plan; connecting people to the outdoors and providing high quality recreational opportunities that will provide multiple benefits (social, economic and promote healthy lifestyles) to local and regional residents and visitors. The City intends to apply for additional federal funds thru the DNR for the trail segment identified within this proposal. For the developed trail segments within the City, the City will work with the DNR towards an agreement for the City to assume the responsibilities for the long term sustainability, maintenance and future capital renewal costs of the trail and facilities within Red Wing's city limits.

C. Timeline Requirements

The project timeline is July 2017 – June 2019, two years. The \$480,000 in Federal Highway Administration Scenic Byway TAP funding requires that the project be ready for construction by September 30, 2018 or the City is at risk to lose the funding. The proposed project completion in June of 2019 is attainable.

2017 Detailed Project Budget


Project Title: Mississippi Blufflands State Trail Red Wing River Walk

IV. TOTAL ENRTF REQUEST BUDGET: Two Years

<u>BUDGET ITEM</u>	<u>AMOUNT</u>
Additional Budget Items: Capital Expenditure; estimated construction cost to construct .75 mile 10 foot trail with 2 foot shoulders is \$2,964,000. \$1.840 million requested from the ENRTF with other funds providing \$1.124 million of the capital expenditure cost for the trail construction.	\$ 1,840,000
TOTAL ENVIRONMENT AND NATURAL RESOURCES TRUST FUND \$ REQUEST =	\$ 1,840,000

V. OTHER FUNDS

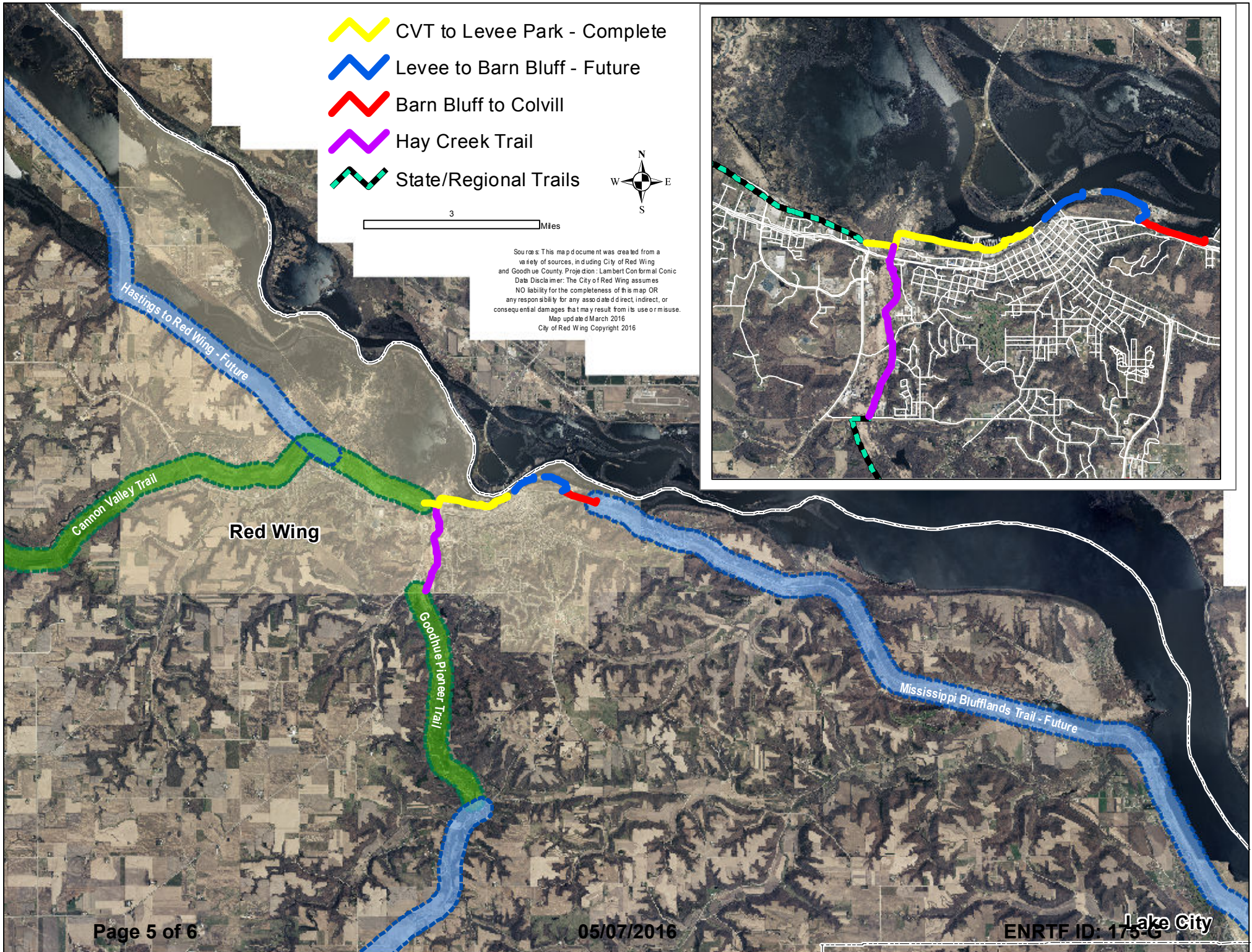
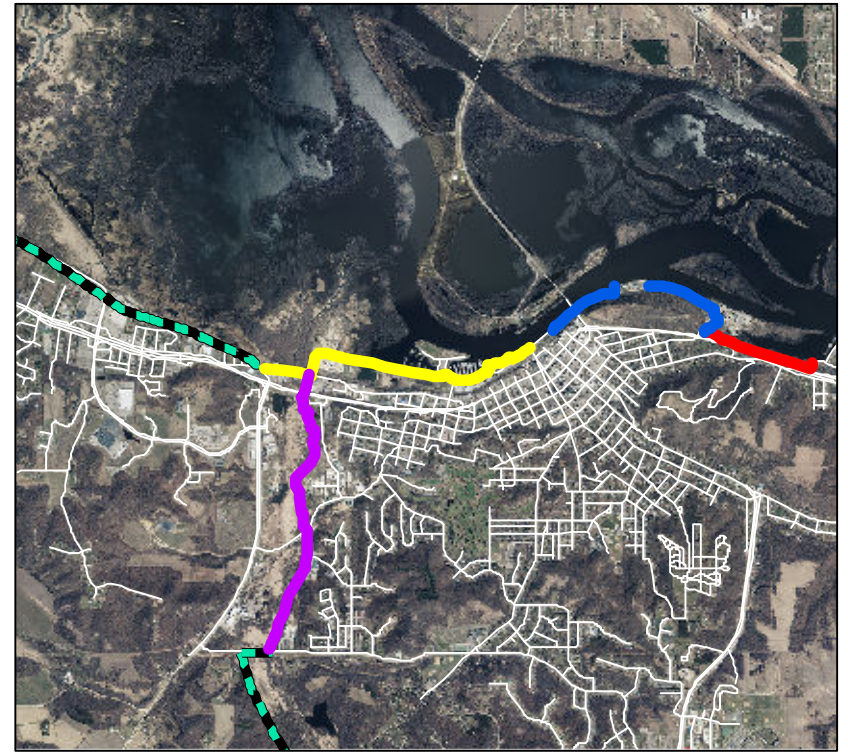
<u>SOURCE OF FUNDS</u>	<u>AMOUNT</u>	<u>Status</u>
Other Non-State \$ To Be Applied To Project During Project Period: City of Red Wing General Funds, budgeted within Capital Improvement Plan 2017-2019.	\$ 521,000	<i>Secured</i>
Other Non-State \$ To Be Applied To Project During Project Period: FHWA Scenic Byways Program, construction must be initiated by September 2018 or the city will lose this funding.	\$ 480,000	<i>Secured</i>
Other Non-State \$ To Be Applied To Project During Project Period: Private Donations. Red Wing has a history of philanthropic and community giving for major, legacy community betterment projects. At least one or more of the three major community philanthropic organizations, The Red Wing Area Fund, The Jones Family Fund, and/or The Marshall Family Fund could be involved with a capital campaign.	\$ 500,000	<i>Pending</i>
Other Non - State \$ To Be Applied To Project During Project Period: The city make application for the Federal Recreational Trail Program in 2017	\$ 150,000	<i>Pending</i>
Other State \$ To Be Applied To Project During Project Period:	\$ -	<i>N/A</i>
In-kind Services To Be Applied To Project During Project Period: City staff and partner originations will contribute time and effort towards the project. The actual dollar amount is undetermined at this time, but is estimated to be in the range of \$50,000.	\$ -	<i>N/A</i>
Funding History: City of Red Wing General Funds and a Red Wing Area Fund donation funding was used to complete preliminary engineering and the environmental assessment and historical investigation of the Red Wing riverfront trail project corridor. \$79,464 was the pro-rated cost for Segment 3, Barn Bluff Park to Colvill Park.	\$ 79,464	<i>completed</i>
Remaining \$ From Current ENRTF Appropriation:	N/A	<i>N/A</i>

-  CVT to Levee Park - Complete
-  Levee to Barn Bluff - Future
-  Barn Bluff to Colvill
-  Hay Creek Trail
-  State/Regional Trails



3 Miles

Sources: This map document was created from a variety of sources, including City of Red Wing and Goodhue County. Projection: Lambert Conformal Conic.
 Data Disclaimer: The City of Red Wing assumes NO liability for the completeness of this map OR any responsibility for any associated direct, indirect, or consequential damages that may result from its use or misuse.
 Map updated March 2016
 City of Red Wing Copyright 2016



Project Manager Qualifications & Organization Description

Project Manager:

Mr. Jay Owens, P.E., 651.385.3625 jay.owens@ci.red-wing.mn.us

Qualifications:

Mr. Owens has been with the City of Red Wing for over 20 years, serving as City Engineer for 12 of those years. Mr. Owens has extensive experience in the areas of municipal engineering design, procurement, NEPA compliance, environmental law and policy, land management, surface water management, contract management and construction administration and management.

Mr. Owens has managed multiple municipal infrastructure construction projects that have utilized a variety of local, state and federal sources of funding during his tenure as City Engineer. His administrative duties have included preliminary engineering reports, cost estimating, preliminary layout preparation, construction document production and presentations to the public and elected bodies.

Mr. Owens received a Bachelor of Science degree in Civil Engineering from the University of Minnesota in 1997.

Organization Description:

The City of Red Wing was incorporated as a Minnesota city in 1857 and is the County Seat of Goodhue County. The City's eastern border is the Mississippi River.

Red Wing is a Charter City with a weak Mayor strong City Council form of government with the Council President being the chief elected official. The City's organizational structure includes seven Departments and nine different Divisions within the Departments and employs 171 full time equivalent positions. The Departments include: Administration, Fire, Engineering, Library, Planning, Police, and Public Works.

The Engineering Department has nine staff including the Engineering Director who leads the Department and the City Engineer position who serves as a Deputy Director. The Engineering Department will lead the project. The Planning Department has four staff led by the Planning Director and the Finance Division, within the Administration Department, has five staff led by the Finance Director. The City Planning and Administration Departments will provide ancillary project support.

The City of Red Wing owns, operates and maintains over 900 acres of municipal and regional parkland and 12 miles of recreational trails.