

**Environment and Natural Resources Trust Fund
2017 Request for Proposals (RFP)**

Project Title:

ENRTF ID: 161-F

Restoring Our Metro Lands and Waters: MeCC 10

Category: F. Methods to Protect, Restore, and Enhance Land, Water, and Habitat

Total Project Budget: \$ 524,400

Proposed Project Time Period for the Funding Requested: 3 years, July 2017 - June 2020

Summary:

We will restore 250 acres of critical habitat, engage 530 volunteers, improve restoration practices, foster partnerships, promote community stewardship of urban natural resources, and leverage \$132,000 in non-state dollars.

Name: Wiley Buck

Sponsoring Organization: Great River Greening

Address: 35 Water St W
St. Paul MN 55107

Telephone Number: (651) 775-8759

Email wbuck@greatrivergreening.org

Web Address www.greatrivergreening.org

Location

Region: Metro

County Name: Carver, Chisago, Hennepin

City / Township:

Alternate Text for Visual:

Project location overlaid on Metro Conservation Corridors plus thumbnail aerials of 5 restoration sites

_____ Funding Priorities	_____ Multiple Benefits	_____ Outcomes	_____ Knowledge Base
_____ Extent of Impact	_____ Innovation	_____ Scientific/Tech Basis	_____ Urgency
_____ Capacity Readiness	_____ Leverage	_____ TOTAL	_____ %

PROJECT TITLE: Restoring Our Metro Lands and Waters: MeCC 10

I. PROJECT STATEMENT: Great River Greening selects high priority restoration projects within Metropolitan Conservation Corridors (MeCC) and works with committed landowners to evaluate, restore, and engage the community. Proposed are five of these projects, each one restoring a parcel that was previously acquired with Trust Fund dollars and/or having a strong community engagement opportunity. We also propose to continue developing applications for conservation haying, improvements in restoration monitoring, and an enhanced opportunity for citizens to become more deeply engaged in restoration maintenance through a pilot Site Steward program. We will restore 250 acres of critical habitat, engage 530 volunteers, improve restoration practices, foster partnerships among an array of local, state, federal, non-profit, and private entities, promote community stewardship of urban natural resources, and leverage \$132,000 in non-state dollars.

Much of our remaining habitat in the metro area is threatened by conversion, fragmentation, altered hydrology, invasive species, and a public that is spending less time in natural areas. Restoration and management of these habitats is needed now and into the future to retain Minnesota’s natural heritage for generations, protect rare and declining species, protect our clean water, and reconnect habitat corridors.

II. PROJECT ACTIVITIES AND OUTCOMES

Activity 1: Restore 250 acres of Upland Habitat, Engaging Volunteers **Budget: \$489,700**

We will restore 250 acres of priority forest, prairie, woodland, and savanna over five sites located within the mapped Metro Conservation Corridors. Projects are designed to preserve high quality features, prevent further degradation, and/or protect species of greatest conservation need. Actions include invasive removal, woody encroachment reduction, prescribed burning, seeding, planting, and conservation haying. We will engage 530 volunteers in restoration tasks, such as planting, hauling cut brush, and controlling erosion, engaging them in the long term success of the projects, and providing an active and enjoyable educational opportunity. All projects will include a management plan and initial restoration evaluation at the end of the grant period.

Outcome	Completion Date
1. Restore 5 sites, 250 acres total	June 30, 2020
3. Engage 530 volunteers	June 30, 2020

Activity 2: Digitized Restoration Monitoring and Advanced Site Steward Program **Budget: \$34,700**

To advance the practice of restoration, Greening will continue to refine our protocol and methodology for the restoration evaluations, to improve the cost-effectiveness and efficacy of future efforts. We will institute new DNR recommendations for field equipment and software, which includes Apple platform field recording devices (e.g. iPad mini’s) as well as [ESRI Survey123](#) and [ArcCollector](#) software/applications. This will enable us to upload our data into a compatible shared database. We will coordinate closely with MN DNR and MnIT staff to finalize protocols. We will complete all of the initial evaluations from this appropriation, 14 ‘third year’ evaluations from our ML 2013 appropriation, and upgrade our 18 ‘third year’ evaluations of our ML 2011 projects into this electronic format. Also, we will explore opportunities to use this equipment to improve our efficiencies for initial site assessments, plant surveys, and other planning activities.

To address an industry-wide challenge for sustainable maintenance strategies, and offer a deeper engagement opportunity for volunteers, we will pilot a Site Steward volunteer program. The program will promote a long-lasting and action-based conservation ethic at sites of past and present Environmental Trust Fund projects. We will recruit and train skilled volunteers to work at four sites yearly under the guidance of Greening ecologists. Stewardship activities will include vegetation monitoring, invasive species management, seed collection, planting, and other tasks to further the natural resource management goals. Outcomes of this program are twofold. Greening will track the acres affected, the number restoration activities completed, and assess the ways in which Site Stewards can best meet the long-term maintenance needs for restored natural areas.

Secondly, the Site Stewards will develop in-depth knowledge of the management issues of restoration areas, increase their capability with invasive and native plants, and deepen their commitment to conservation activities. Site Stewards will contribute over 240 hours of natural resource work during the course of the grant, with potential for future contributions by Site Stewards trained in the program.

Outcome	Completion Date
1. Complete the 5 ‘initial evaluations’ from this appropriation, in digital format.	June 30, 2020
2. Upgrade 18 ‘third year evaluations’ of our 2011 projects to digital format.	June 30, 2020
3. Complete 14 ‘third year evaluations’ of our 2013 projects, in digital format.	June 30, 2020
4. Engage Site Stewards at 4 sites; complete pilot program evaluation.	June 30, 2020

III. PROJECT STRATEGY

A. Project Team/Partners

Chisago City (Ojiketa Regional Park): Non-state funding

City of Chanhassen (Chanhassen Nature Preserve): Non-state funding

City of Lindstrom (Allemansratt Wilderness Park): Non-state funding

City of St. Louis Park (Westwood Nature Center): Non-state funding

Minnehaha Creek Watershed District (Six Mile Marsh Prairie): Non-state funding

Private Donors (pursued as the project moves forward): Non-state funding

Volunteers (recruited during implementation): Non-state in-kind services

Metro Conservation Corridors Partnership (MeCC) organizations: In-kind project development, dissemination

B. Project Impact and Long-Term Strategy

This project will add to the 9,500 acres already restored by the Metro Conservation Corridors partnership. In particular, this project will address restoration and engagement opportunities in the urban core; areas experiencing conversion pressure; and the west metro which to date has been under-served by Greening activities. By continuing to implement conservation haying as a restoration and management practice; and digitizing evaluations, Greening will promote cost-effective and beneficial restoration techniques with wide application.

Engaging volunteers in meaningful, appropriate and transferrable outdoor restoration activities on natural areas will allow community members to learn, enjoy, and understand the restoration process, which are key elements for safeguarding our natural treasures through time. To date, Greening has engaged 7,600 volunteers in the Corridors; nearly half of Great River Greening’s volunteers are under the age of 25. In this proposal we are piloting a Site Steward program that has the potential for a deeper and longer-term engagement for this community of environmentally-minded citizens. The Site Steward program promotes a cost-effective, sustainable approach to restoration maintenance.

Opportunities to restore new sites, and subsequent phases covering additional acres/shoreline will continue into the future. The mapped Metro Conservation Corridors provide direction as to where our efforts are best focused.

C. Timeline Requirements

3 years.

2017 Detailed Project Budget

Project Title: Restoring Our Metro Lands and Waters: MeCC 10

IV. TOTAL ENRTF REQUEST BUDGET (3 yrs)

BUDGET ITEM	AMOUNT
Personnel: All FTE totals are for 3 years	\$ 90,300
Program Manager/Ecologist: Wiley Buck \$16,600 (78% salary, 22% benefits; 0.07 FTE)	
Restoration Ecologists: Steve Thomforde, Sean Wickhem, Todd Rexine. \$29,500 (83% salary, 17% benefits; 0.18 FTE)	
Director of Conservation: TBD \$4,000 (estimate 83% salary, 17% benefits; 0.02 FTE)	
Grants Management Assistant: Lisa Strauss \$7,200 (90% salary, 10% benefits; 0.10 FTE)	
Volunteer & Outreach Manager: Katie McCann \$14,100 (85% salary, 15% benefits; 0.11 FTE)	
Field Coordinator: Anja Hogan \$4,000 (85% salary, 15% benefits; 0.02 FTE)	
Field Technicians: Jessie Hendrix, Max Samuelson \$5,600 (92% salary, 8% benefits; 0.02 FTE)	
Director of Finance: William Smith \$5,000 (78% salary, 22% benefits; 0.02 FTE)	
Financial Operations Manager: Julia Wells \$3,100 (84% salary, 16% benefits; 0.02 FTE)	
Communications Manager: Mary Anne Welch \$1,200 (80% salary, 20% benefits; 0.01 FTE)	
Professional/Technical/Service Contracts:	
Competitive RFP: site preparation and prairie seeding, invasive species control, woody harvest, thinning, forestry mowing, herbicide treatment prescribed fire, haying; vegetation monitoring; pollinator monitoring.	\$ 278,600
Equipment/Tools/Supplies:	
Seed (\$26,000), plugs and shrubs (\$11,000), trees (825 trees at \$100/tree= \$82500)	\$ 119,500
Fencing, erosion control mats, herbicide	\$ 11,800
Personal protective gear and hand tools for volunteers and technicians; repair and maintenance of mowers, ATV, UTV, and sprayers.	\$ 4,900
Data plans for data collection on digital devices in the field (5 plans, \$50/mo, 3 yrs)	\$ 9,000
Travel:	
In-state mileage to/from sites, meetings, purchases. 10.2K mi @ \$0.54/mi	\$ 5,500
Additional Budget Items:	
Volunteer Event Supplies & Rentals: Healthy food, beverages; table/chair/portable toilet/large tent rentals. 530 volunteers.	\$ 4,800
TOTAL ENVIRONMENT AND NATURAL RESOURCES TRUST FUND \$ REQUEST =	\$ 524,400

V. OTHER FUNDS *(This entire section must be filled out. Do not delete rows. Indicate "N/A" if row is not applicable.)*

SOURCE OF FUNDS	AMOUNT	Status
Other Non-State \$ To Be Applied To Project During Project Period:	\$ 132,000	
City of Chanhassen (\$25,000)		Pending
Minnehaha Creek Watershed District (\$25,000)		Pending
City of St. Louis Park (\$30,000)		Pending
City of Lindstrom (\$20,000)		Pending
Chisago City (\$5,000)		Pending
ESRI Software (\$25,000)		Pending
Private donations (\$2,000) to be pursued during grant period		Pending
Other State \$ To Be Applied To Project During Project Period:	\$ -	
In-kind Services To Be Applied To Project During Project Period: 1250 Vol. hrs @ \$12/hr	\$ 15,000	Pending
Funding History: <u>Trust Fund:</u> M.L. 2003 \$124K; M.L. 2005 \$100K; M.L. 2007 \$60K; M.L. 2008 \$111K; M.L. 2009 \$155K; M.L. 2011 \$400K; M.L. 2013 \$208K; M.L. 2014 \$300K; M.L. 2015 \$400K; M.L. 2016 \$509K (pending). <u>OHF Metro Big Rivers (MBR):</u> M.L. 2010 \$170K; M.L. 2011 \$150K; M.L. 2012 \$375K; M.L. 2013 \$210K; M.L. 2014 \$400K; M.L. 2015 \$400K; M.L. 2016 \$1,107K (pending); <u>OHF Anoka Sand Plain (ASP):</u> M.L. 2010 \$747K; M.L. 2012 \$559K; M.L. 2014 \$901K, M.L. 2016 \$813K (pending).	\$ 1,858,000 \$ 509,000 \$ 3,912,000 \$ 1,920,000	ENRTF: Prior Pending OHF: Prior Pending
Remaining \$ From Current ENRTF Appropriation: Trust Fund M.L. 2013 \$59,800 (\$20,900 obligated); M.L. 2014 \$234,500 (\$113,300 obligated); M.L. 2015 \$368,100 (\$105,700 obligated)	\$ 662,400	Unspent (\$240,000 obligated)

**Environment and Natural Resources Trust Fund
2017 Proposed Acquisition/Restoration List**

Project Title: Restoring Our Metro Lands and Waters: MeCC 10

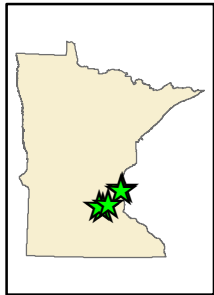
Project Manager Name: Wiley Buck


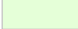


Organization: Great River Greening

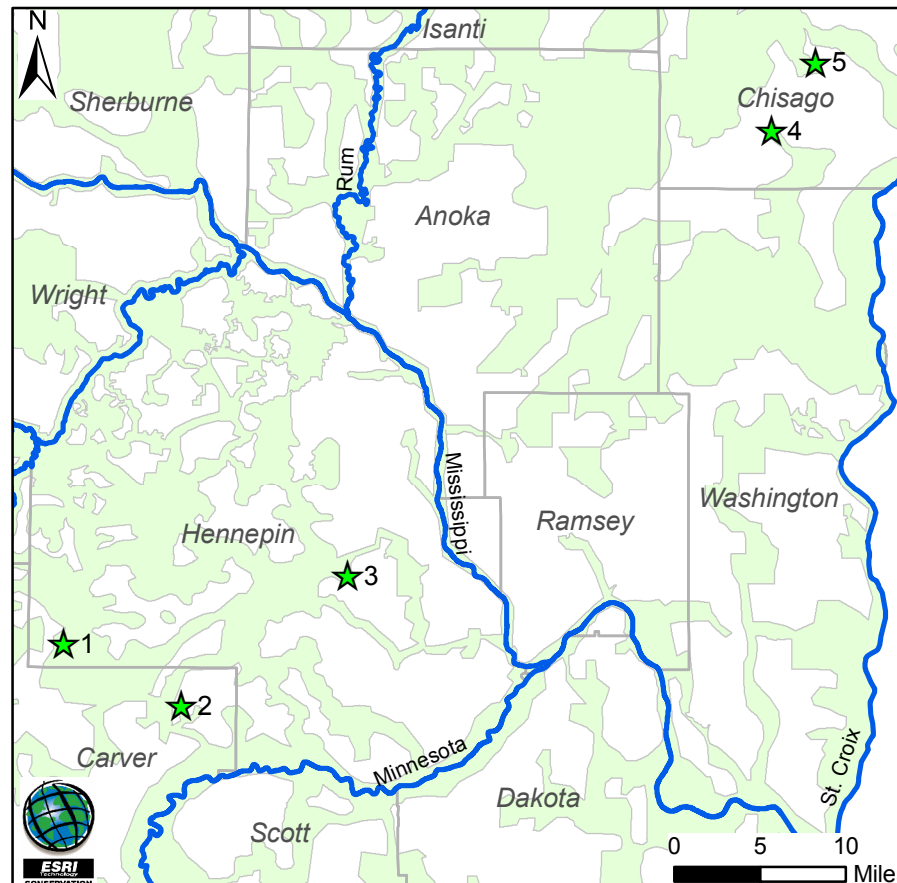
ENRTF \$ Request: \$524,400

#	Acquisition or Restoration Parcel Name	Geographic Coordinates Format: [Deg.]° [Min.]' [Sec.]" [Hemis.]		Estimated Cost	County	Ecological Significance	Activity Description	# of Acres	# of Shoreline Miles	Type of Landowner	Proposed Fee Title or Easement Holder (if applicable)
		Latitude	Longitude								
1	Allemandsatt Wilderness Park IV - Forest Enhancement and Re-forestation	45° 23' 58.72" N	92° 50' 42.408" W	\$160,900	Chisago	High quality maple-oak-basswood forest and wetland mosaic	Invasive removal; 16 ac of tree planting	52		Public	n/a
2	Chanhassen Nature Preserve - Oak Savanna Enhancement	44° 51' 32.4"	-93° 35' 9.5994"	\$102,900	Carver	Open-grown bur and red oaks in rolling morainal terrain surrounded by wetlands	Restore to savanna with intensive tree and shrub removal and restoration of herbaceous layer	16		Public	n/a
3	Ojiketa Regional Park - Forest Enhancement	45° 20' 35.52" N	-92° 53' 4.55" W	\$36,300	Chisago	High quality terrace forest	Low density invasive removal; thinning	70		Public	n/a
4	Six Mile Marsh - Prairie Conservation Haying	44° 54' 38.88"	-93° 43' 33.96"	\$111,900	Hennepin	Restored prairie in Six Mile Creek corridor, upstream of Lake Minnetonka, innovative maintenance and enhancement of restored prairie using haying	Conservation haying of previously restored prairie in maintenance stage; monitor nitrogen, vegetation, and pollinators.	115		Public	n/a
5	Westwood Hills Nature Center II - Oak Savanna/Prairie Transition Zone Restoration	44° 58' 15.972" N	93° 23' 15.15" W	\$77,700	Hennepin	Mosaic of maple-basswood forest, oak woodland, oak savanna, and prairie.	Woody invasive removal; thinning; seeding and planting	15.5		Public	n/a

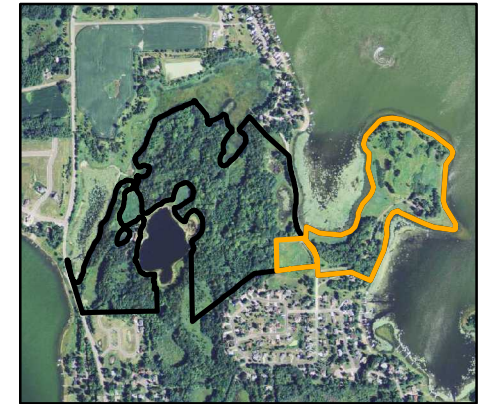
Restoring our Metro Lands and Waters: MeCC 10 Project Locations



-  MeCCX 10 Proposed Projects
-  Metro Conservation Corridors
-  Rivers
-  County boundaries



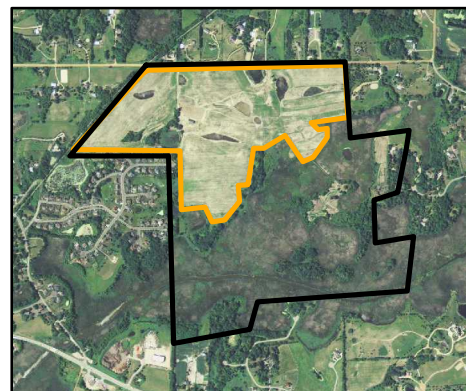
5. Allemansratt Park (Lindstrom, 50 ac forest)



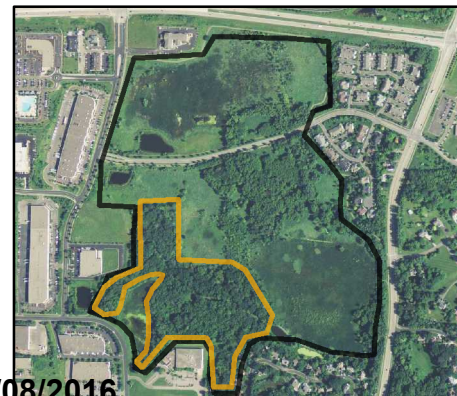
4. Ojiketa Regional Park (Chisago, 70 ac forest)



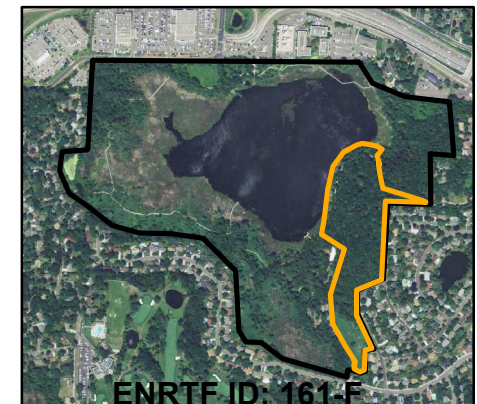
1. Six Mile Marsh (St. Bonifacious, 30 ac prairie)





2. Chanhassen Nature Preserve (18 ac oak savanna)



3. Westwood Hills Nature Center (St. Louis Park, 15 ac savanna)



-  Project Boundary
-  Site Boundary





GREAT RIVER GREENING

RESTORING LAND, WATER AND WONDER

Project Manager Qualifications

Wiley Buck (M.S., Conservation Biology, University of Minnesota) has ten years of experience leading restoration projects and partnerships at Great River Greening. Wiley designs and directs restoration activities at some of Great River Greening's hallmark projects including Pilot Knob Hill and Fish Creek. Wiley oversees grants including those from the Minnesota Environment and Natural Resources Trust Fund and Outdoor Heritage Fund, representing Greening in the Metro Conservation Corridors partnership, the Metro Big River Partnership, and the Anoka Sandplain Partnership. He co-leads the prescribed burn and conservation grazing programs at Greening. Wiley also currently manages several research and monitoring projects including oak ecotype growth and survival; the effects of conservation grazing on vegetation; and pollinator surveys at restoration sites. Wiley's restoration expertise builds upon prior experience with McHenry County Conservation District, The Nature Conservancy, Chicago Wilderness, and Minnesota DNR's Scientific and Natural Areas Program.

Organization Description

Since 1995, Great River Greening has worked to secure the legacy of Minnesota land and water through community-based restoration, stewardship, and partnerships. In 20 years, we have worked side-by-side with 36,000 volunteers to improve, restore and care for Minnesota's natural heritage: 15,000 acres and counting. Our highly experienced, committed ecologists apply state-of-the-art practices to restoration projects, sharing skill and knowledge with landowners, volunteers, students and at-risk youth. We choose our conservation projects based upon conservation need, ecosystem services provided, and community benefits. Current priorities include critical corridors of land and water in the metro area, enhancing the recreational experience of visitors to parks, natural areas, lakes, and rivers, restoration of the globally endangered oak savanna habitat of east central Minnesota; protection of water quality of the Rum River Watershed, and collaborative work with farmers in the Minnesota River to improve water quality.

