

**Environment and Natural Resources Trust Fund
2015 Request for Proposals (RFP)**

Project Title:

Preserving Old-Growth Forests on School Lands

ENRTF ID: 151-G

Category: G. Land Acquisition for Habitat and Recreation

Total Project Budget: \$ 2,029,536

Proposed Project Time Period for the Funding Requested: 2 years, July 2015 - June 2017

Summary:

Designated old-growth stands provide an ecologically significant piece to Minnesota's landscape. Minnesota law requires that the State compensate for policies or designations that prohibit revenue generation on school trust lands.

Name: Aaron Vandelinde

Sponsoring Organization: MN DNR

Address: 500 Lafayette Rd
St. Paul MN 55155

Telephone Number: (651) 259-5955

Email aaronvandelinde@state.mn.us

Web Address www.dnr.state.mn.us

Location

Region: Statewide

County Name: Statewide

City / Township:

Alternate Text for Visual:

Examples of Old Growth Forests on School Trust Lands

_____ Funding Priorities	_____ Multiple Benefits	_____ Outcomes	_____ Knowledge Base
_____ Extent of Impact	_____ Innovation	_____ Scientific/Tech Basis	_____ Urgency
_____ Capacity Readiness	_____ Leverage	_____ TOTAL	_____ %



PROJECT TITLE: Preserving Old-Growth Forests on School Trust Lands

I. PROJECT STATEMENT

Old-growth forest complexes are defined by tree age (typically 120 years or older), unique stand structure and the degree of disturbance in a particular forest. These features of an old-growth forest create diverse and ecologically significant areas for wildlife habitat and native plant communities.

The 1998 Old-growth Guidelines implemented by DNR prohibit revenue generation on approximately 20,000 acres of old-growth stands situated on Minnesota’s school trust lands. The project goal is to protect, secure and maintain old-growth designations on school trust lands by compensating the Permanent School Trust. Compensation will mainly be accomplished through acquisition of fee title and payment for timber. The project will utilize existing DNR data regarding old-growth forest designations to prioritize compensation to the school trust fund.

The 18,000 acres of designated old-growth forests on school trust lands provide a unique and ecologically significant piece to Minnesota’s landscape. With the 2012 amendments to Minnesota Statutes, section 84.027, subd. 18, the Department of Natural Resources (DNR) is required to compensate the Permanent School Fund for policies or designations that prohibit revenue generation on school trust lands.

II. DESCRIPTION OF PROJECT ACTIVITIES

Activity 1: Identification of old-growth forests on school trust lands **Budget: \$25,000**

DNR will identify approximately 18,000 acres of school trust lands designated as old-growth forest complexes. DNR staff will utilize GIS tools to delineate, categorize by old-growth forest types, and prioritize for compensation.

Outcome	Completion Date
1. Complete old-growth forest complex delineation and legal descriptions	08/31/2015
2. Complete categorization and prioritization of old-growth forests	09/30/2015

Activity 2: Valuation and compensation models **Budget: \$20,000**

DNR will analyze old-growth forest stands, provide forest stand valuations, and develop multiple compensation plans specific to each old-growth forest designation.

Outcome	Completion Date
1. Develop forest stand data for valuation purposes	11/30/2015
2. Develop compensation methodologies and plans	1/31/2016

Activity 3: Compensation for timber value only **Budget: \$862,052**

DNR Forestry will determine the timber value of specific old-growth forests located on school trust lands. The timber appraisal will establish the compensation amount to be paid to the School Trust Fund in those situations where the School Trust is best served by retaining its fee ownership due to future revenue potential other than forest products industry.

Outcome	Completion Date
1. Complete timber appraisal of old growth forests	02/28/2016
2. Finalize agreement of compensation to Permanent School Trust fund for specific acreage designated as old-growth forests	04/30/2016



Environment and Natural Resources Trust Fund (ENRTF)

2015 Main Proposal

Project Title: Preserving Old-Growth Forests on School Trust Lands

Activity 4: Establishment of Public Use/ Compensation for Fee Title

Budget: \$1,150,000

DNR will seek to obtain fee title of school trust lands for those old-growth forest complexes that have limited economic potential. Doing so will relieve the school trust lands with old-growth forest designations from the revenue generation obligation inherent with DNR’s fiduciary responsibility to the school trust.

Outcome	Completion Date
1. Preparation and submittal of eminent domain actions to establish the public use of school trust lands as old-growth forests.	8/31/2016
2. Finalization of judgment and decree by District Court	10/31/2016
3. Compensation remitted to Permanent School Trust Fund	11/30/2016
4. Delivery of school trust land patent to State.	12/31/2016
5. Update DNR land records and GIS layers to remove school trust land status	3/31/2017
6. Preparation and submittal of final report.	06/30/2017

Activity 5: Final Report

Budget: \$25,052

DNR will update its lands database and produce the final report.

Outcome	Completion Date
1. Update DNR land records and GIS layers to remove school trust land status	3/31/2017
2. Preparation and submittal of final report.	06/30/2017

III. PROJECT STRATEGY

A. Project Team/Partners

The DNR’s School Trust Team led by DNR School Trust Administrator will be responsible for overall project coordination, and all of Activity 1, and a portion of both Activity 2 and Activity 3. DNR Resource Assessment unit will be responsible for a portion of both Activity 2 and Activity 3. DNR Resource Assessment unit operates under service level agreements, and will be compensated for its services under such an agreement. The Attorney General’s office will be responsible for Activity 4. The Attorney General’s office provides legal services to state agencies on an hourly fee basis; the DNR would utilize a portion of the ENRTF monies to pay for necessary legal services.

B. Timeline Requirements

Funding for two years (July 1, 2015 through June 30, 2017) is requested to initiate and complete the compensation of specific old-growth forest complexes. The basis stems from the intricacies to identify and recommend a prioritization of parcels, develop compensation plans specific to each stand, and to commence and conclude an eminent domain action in Minnesota district court.

C. Long-Term Strategy and Future Funding Needs

DNR’s long-term strategy is to compensate the school trust for 20,000 acres of designated old-growth over a five year period. The requested funding amount will permit the State to compensate the school trust for approximately 5,000 acres of designated old-growth. The DNR long-term strategy will be to acquire the remaining acres over a period of five successive years at a cost of approximately \$20,000,000.

DNR administers school trust acreages within three other non-income generating management units. They are: Peatland Scientific and Natural Areas (51,000 acres); water access sites (207 sites); and wildlife management areas (approximately 2,400 acres). A conservative range to acquire these school trust lands is between \$50 million and \$100 million. Minnesota Statutes, section 84.027, subd. 18 require DNR to compensate the trust for these designations by June 30, 2018.

2015 Detailed Project Budget
Preserving Old Growth Forests on School Trust Lands

IV. TOTAL TRUST FUND REQUEST BUDGET 3 years

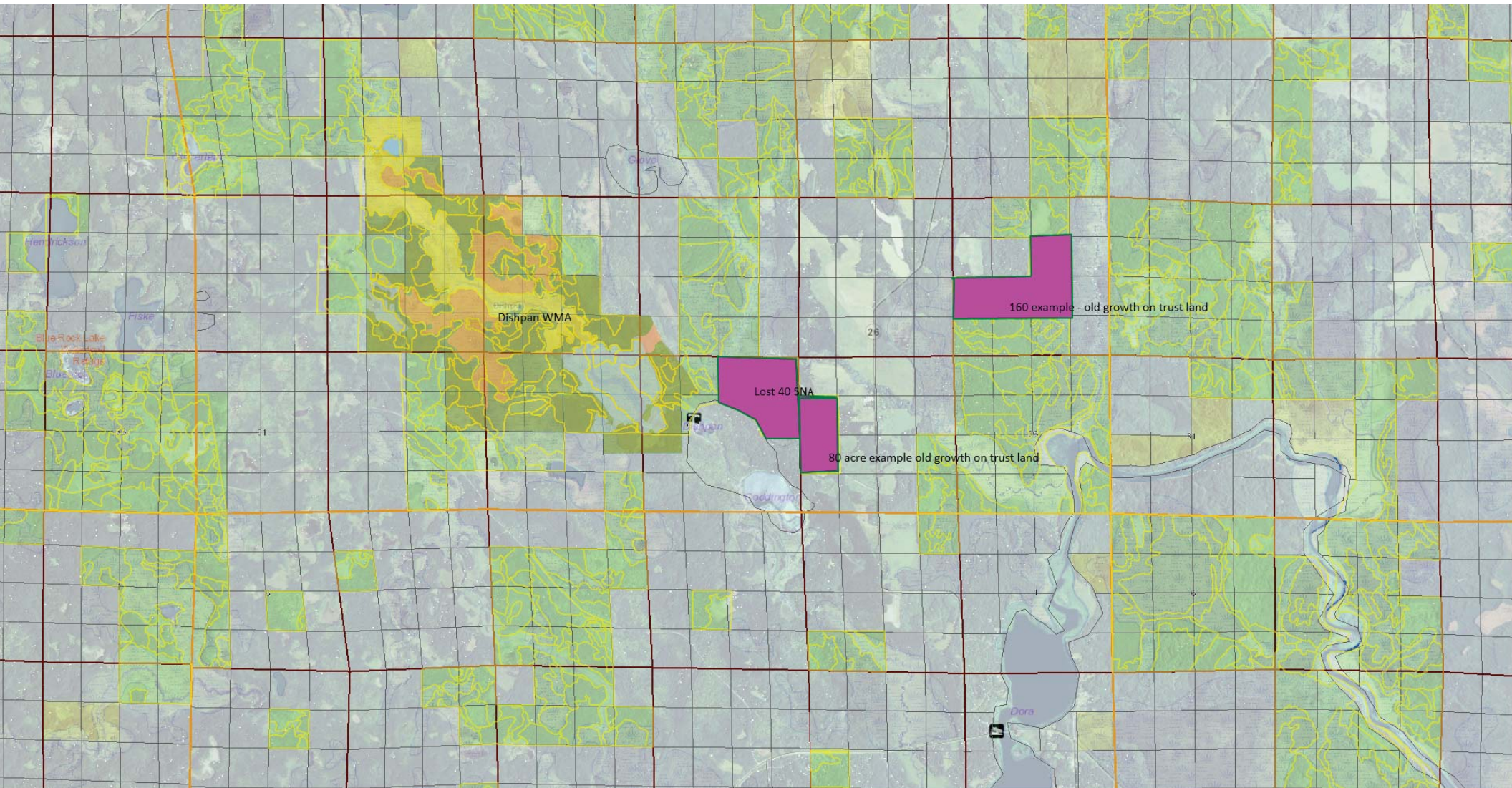
BUDGET ITEM	AMOUNT	
Personnel:		
1. <u>Activity 1: Research analyst (.5 FTE, 6 months, unclassified). 77% salary/23% fringe benefits</u>	\$ 14,930	
2. <u>Activity 1: Land surveyor (.2 FTE, 2 months, unclassified). 77% salary/23% fringe benefits</u>	\$ 10,070	
Contracts:		
1. <u>Activities 2 and 3: Service Legal Agreement with DNR - Forest Resource Unit.</u> DNR Forest Resource Unit will complete an analysis and valuation of old growth timber stands.	\$ 20,000	
2. <u>Activity 4: Market Valuation appraisal contract.</u> (Professional/technical state bid). Contractors will determine market value, provide appraisal review of market determination, and recommend certification to DNR.	\$ 50,000	
3. <u>Activity 4: Attorney General's office contract.</u> Attorney General's office will represent both the State and Permanent School Trust throughout the eminent domain litigation.	\$ 50,000	
Equipment/Tools/Supplies:	\$ -	
Acquisition (Fee Title or Permanent Easements):		
2. <u>Activity 4.</u> DNR will concentrate its eminent domain actions to acquire fee title on specific designated old growth forest stands.	\$ 1,000,000	
Direct and Necessary Services required to support this appropriation. DNR's direct and necessary costs pay for activities that are directly related to and necessary for accomplishing appropriated programs/projects. In addition to itemized costs captured in our proposal budget, direct and necessary costs cover Financial Support (~\$11,440), Communication Support (~\$1,141), Planning Support (~\$704), Procurement Support (~\$235), and division and regional program management (~\$16,016) that are necessary to accomplishing funded programs/projects.	\$ 29,536	
Travel:		
<u>Activities 1, 2, 4.</u> In-state travel (non-fleet mileage, lodging and meals) essential to complete project activities. Calculations based on travel from St. Paul to Grand Rapids.	\$ 5,000	
Additional Budget Items:		
1. <u>Activity 3.</u> DNR will compensate the school trust for the timber value in those old growth forest stands in which a determination is made that it is in the best interests of the trust to retain fee title ownership.	\$ 850,000	
TOTAL ENVIRONMENT & NATURAL RESOURCES TRUST FUND \$ REQUEST	\$ 2,029,536	
V. OTHER FUNDS		
SOURCE OF FUNDS	AMOUNT	Status
Other Non-State \$ Being Applied to Project During Project Period: N/A	\$ -	
Other State \$ Being Applied to Project During Project Period: N/A		N/A
In-kind Services During Project Period: N/A	\$ -	
Remaining \$ from Current ENRTF Appropriation (if applicable): N/A	\$ -	
Funding History: N/A	\$ -	

Project Title: Preserving Old Growth Forests on School Trust Lands
 Project Manager Name: Aaron Vande Linde
 Organization: DNR School Trust Lands Administrator
 ENRTF \$ Request: \$2,029,536

County	Township	Range	Section	40 / Gov Lot	Acres	Estimated value	\$2M request - tracking	Ecological Significance Old Growth Species	Riparian	Approximate Shoreline Front Feet	Activity Description	Landowner / Land Status	Proposed Fee Title or Easement Holder
AITKIN	52	23	36	Lot 2	39.90	\$ 35,910.00		Northern Hardwoods	Y, public water	675	Fee title	TRUST FUND: SCHOOL	State of Minnesota
ITASCA	53	24	16	LOT 1	33.30	\$ 29,970.00		Lowland Hardwoods	Y, public water	1683	Fee title	TRUST FUND: SCHOOL	State of Minnesota
ITASCA	53	24	16	LOT 6	34.50	\$ 31,050.00		Lowland Hardwoods	Y, public water	2132	Fee title	TRUST FUND: SCHOOL	State of Minnesota
ITASCA	53	24	16	LOT 10	39.50	\$ 35,550.00		Lowland Hardwoods	Y, public water	2844	Fee title	TRUST FUND: SCHOOL	State of Minnesota
ITASCA	53	24	36	LOT 6	31.00	\$ 27,900.00		Lowland Hardwoods	Y, public water	3080	Fee title	TRUST FUND: SCHOOL	State of Minnesota
ITASCA	53	24	36	LOT 10	38.00	\$ 34,200.00		Lowland Hardwoods	Y, public water	1499	Fee title	TRUST FUND: SCHOOL	State of Minnesota
ITASCA	53	24	36	LOT 2	38.30	\$ 34,470.00		Lowland Hardwoods	Y, public water	3136	Fee title	TRUST FUND: SCHOOL	State of Minnesota
SAINT LOUIS	55	12	16	LOT 2	18.40	\$ 16,560.00		Lowland Hardwoods	Y, River	1656	Fee title	TRUST FUND: SCHOOL	State of Minnesota
LAKE	56	7	16	NESW	10.70	\$ 9,630.00		Cedar	Y, River		Fee title	TRUST FUND: SCHOOL	State of Minnesota
LAKE	56	7	16	NWSW	22.70	\$ 20,430.00		Cedar	Y, River	2392	Fee title	TRUST FUND: SCHOOL	State of Minnesota
LAKE	56	7	16	SESW	22.80	\$ 20,520.00		Cedar	Y, River	1443	Fee title	TRUST FUND: SCHOOL	State of Minnesota
LAKE	57	7	18	NWNW	26.00	\$ 23,400.00		White Spruce	Y, River	869	Fee title	TRUST FUND: IND SCHOOL	State of Minnesota
LAKE	58	7	21	SWNW	1.00	\$ 900.00		Cedar	Y, River	626	Fee title	TRUST FUND: SWAMP	State of Minnesota
LAKE	58	7	21	NWSW	5.50	\$ 4,950.00		Cedar	Y, River	875	Fee title	TRUST FUND: SWAMP	State of Minnesota
LAKE	58	7	21	SESW	9.90	\$ 8,910.00		Cedar	Y, River	1423	Fee title	TRUST FUND: SWAMP	State of Minnesota
LAKE	58	7	23	NWNE	23.50	\$ 21,150.00		Northern Hardwoods	Y, River	1883	Fee title	TRUST FUND: IND SCHOOL	State of Minnesota
LAKE	58	7	23	NENE	40.00	\$ 36,000.00		Northern Hardwoods	Y, public water	1151	Fee title	TRUST FUND: IND SCHOOL	State of Minnesota
ITASCA	58	26	36	LOT 5	31.30	\$ 28,170.00		Oak	Y, public water	1578	Fee title	TRUST FUND: SCHOOL	State of Minnesota
LAKE	59	6	2	SWNE	32.10	\$ 28,890.00		Cedar	Y, River	1879	Fee title	TRUST FUND: IND SCHOOL	State of Minnesota
LAKE	59	6	10	LOT 7	30.10	\$ 27,090.00		Northern Hardwoods	Y, public water	1883	Fee title	TRUST FUND: IND SCHOOL	State of Minnesota
ITASCA	59	22	16	LOT 4	38.30	\$ 34,470.00		Ash	Y, public water	1407	Fee title	TRUST FUND: SCHOOL	State of Minnesota
LAKE	60	6	36	SESW	3.90	\$ 3,510.00		Cedar	Y, River	1579	Fee title	TRUST FUND: SCHOOL	State of Minnesota
LAKE	60	6	36	NESE	4.70	\$ 4,230.00		Cedar	Y, River	1856	Fee title	TRUST FUND: SCHOOL	State of Minnesota
SAINT LOUIS	63	13	15	LOT 5	46.50	\$ 41,850.00		White Pine	Y, public water, island	4419	Fee title	TRUST FUND: IND SCHOOL	State of Minnesota
SAINT LOUIS	63	13	16	LOT 14	29.50	\$ 26,550.00		Red Pine	Y, public water, island	4737	Fee title	TRUST FUND: SCHOOL	State of Minnesota
SAINT LOUIS	63	13	16	LOT 16	30.00	\$ 27,000.00		White Pine	Y, public water, island	4173	Fee title	TRUST FUND: SCHOOL	State of Minnesota
SAINT LOUIS	63	13	16	LOT 5	40.80	\$ 36,720.00		White Pine	Y, public water	3566	Fee title	TRUST FUND: SCHOOL	State of Minnesota
LAKE	64	9	36	LOT 1	29.40	\$ 26,460.00		White Pine	Y, public water	1105	Fee title	TRUST FUND: SCHOOL	State of Minnesota
SAINT LOUIS	64	16	14	SWSE	32.50	\$ 29,250.00		Red Pine	Y, River	1432	Fee title	TRUST FUND: SWAMP	State of Minnesota
KOOCHICHING	64	23	36	NWSW	3.80	\$ 3,420.00		White Spruce	Y, River	1266	Fee title	TRUST FUND: SCHOOL	State of Minnesota
KOOCHICHING	64	23	36	LOT 1	4.00	\$ 3,600.00		Cedar	Y, River	738	Fee title	TRUST FUND: SCHOOL	State of Minnesota
KOOCHICHING	64	23	36	LOT 7	5.70	\$ 5,130.00		Cedar	Y, River	4107	Fee title	TRUST FUND: SCHOOL	State of Minnesota
KOOCHICHING	64	23	36	LOT 6	6.20	\$ 5,580.00		Cedar	Y, River	2165	Fee title	TRUST FUND: SCHOOL	State of Minnesota
KOOCHICHING	64	23	36	LOT 2	6.60	\$ 5,940.00		Cedar	Y, River	1862	Fee title	TRUST FUND: SCHOOL	State of Minnesota
KOOCHICHING	64	23	36	LOT 4	10.50	\$ 9,450.00		Cedar	Y, River	1453	Fee title	TRUST FUND: SCHOOL	State of Minnesota
KOOCHICHING	64	23	36	LOT 3	10.70	\$ 9,630.00		Cedar	Y, River	1862	Fee title	TRUST FUND: SCHOOL	State of Minnesota
KOOCHICHING	64	23	36	SWSW	11.00	\$ 9,900.00		White Spruce	Y, River	1958	Fee title	TRUST FUND: SCHOOL	State of Minnesota
KOOCHICHING	64	23	36	LOT 5	12.90	\$ 11,610.00		Cedar	Y, River	3697	Fee title	TRUST FUND: SCHOOL	State of Minnesota
KOOCHICHING	64	23	36	NENE	14.00	\$ 12,600.00		Cedar	Y, River	3051	Fee title	TRUST FUND: SCHOOL	State of Minnesota
SAINT LOUIS	65	20	5	NWSE	8.70	\$ 7,830.00		Red Pine	Y, River	1768	Fee title	TRUST FUND: IND SCHOOL	State of Minnesota
SAINT LOUIS	65	20	5	SWNE	12.00	\$ 10,800.00		Red Pine	Y, River	1417	Fee title	TRUST FUND: IND SCHOOL	State of Minnesota
KOOCHICHING	65	24	15	LOT 7	8.50	\$ 7,650.00		Lowland Hardwoods	Y, River	2112	Fee title	TRUST FUND: IND SCHOOL	State of Minnesota
KOOCHICHING	65	24	22	LOT 4	5.50	\$ 4,950.00		Cedar	Y, River	1236	Fee title	TRUST FUND: IND SCHOOL	State of Minnesota
KOOCHICHING	65	24	22	LOT 3	8.60	\$ 7,740.00		Cedar	Y, River	1646	Fee title	TRUST FUND: IND SCHOOL	State of Minnesota
KOOCHICHING	65	24	22	LOT 9	11.50	\$ 10,350.00		Lowland Hardwoods	Y, River	4222	Fee title	TRUST FUND: IND SCHOOL	State of Minnesota
KOOCHICHING	65	24	22	LOT 6	13.20	\$ 11,880.00		Cedar	Y, River	803	Fee title	TRUST FUND: IND SCHOOL	State of Minnesota
KOOCHICHING	65	24	22	LOT 5	31.50	\$ 28,350.00		Cedar	Y, River	1778	Fee title	TRUST FUND: IND SCHOOL	State of Minnesota
KOOCHICHING	65	24	23	LOT 4	29.70	\$ 26,730.00		Lowland Hardwoods	Y, River	3674	Fee title	TRUST FUND: IND SCHOOL	State of Minnesota
KOOCHICHING	65	24	36	LOT 2	2.40	\$ 2,160.00		Cedar	Y, River	1679	Fee title	TRUST FUND: SCHOOL	State of Minnesota

KOOCHICHING	65	24	36	LOT 3	3.30	\$ 2,970.00		Cedar	Y, River	2352	Fee title	TRUST FUND: SCHOOL	State of Minnesota
KOOCHICHING	65	24	36	LOT 6	7.00	\$ 6,300.00		Ash	Y, River	3159	Fee title	TRUST FUND: SCHOOL	State of Minnesota
KOOCHICHING	65	24	36	LOT 5	25.30	\$ 22,770.00		Cedar / White Pine	Y, River	1496	Fee title	TRUST FUND: SCHOOL	State of Minnesota
KOOCHICHING	65	24	36	LOT 4	29.50	\$ 26,550.00		Cedar / White Pine	Y, River	1876	Fee title	TRUST FUND: SCHOOL	State of Minnesota
KOOCHICHING	65	26	16	LOT 9	2.70	\$ 2,430.00		Lowland Hardwoods	Y, River	1679	Fee title	TRUST FUND: SCHOOL	State of Minnesota
KOOCHICHING	65	26	16	LOT 10	21.30	\$ 19,170.00		Lowland Hardwoods	Y, River	2454	Fee title	TRUST FUND: SCHOOL	State of Minnesota
SAINT LOUIS	68	18	36	LOT 6	31.40	\$ 28,260.00		Red Pine	Y, public water	1584	Fee title	TRUST FUND: SCHOOL	State of Minnesota
SAINT LOUIS	68	18	36	LOT 7	31.40	\$ 28,260.00		Red Pine / White Spruce	Y, public water	1351	Fee title	TRUST FUND: SCHOOL	State of Minnesota
SAINT LOUIS	68	18	36	LOT 3	39.60	\$ 35,640.00		Red Pine	Y, public water	3192	Fee title	TRUST FUND: SCHOOL	State of Minnesota
SAINT LOUIS	68	20	20	NESW	2.20	\$ 1,980.00		Lowland Hardwoods	Y, River	1023	Fee title	TRUST FUND: SCHOOL	State of Minnesota
SAINT LOUIS	68	20	20	SWNE	8.00	\$ 7,200.00		Lowland Hardwoods	Y, River	2306	Fee title	TRUST FUND: SWAMP	State of Minnesota
SAINT LOUIS	68	20	20	SESE	9.30	\$ 8,370.00		Lowland Hardwoods	Y, River	1742	Fee title	TRUST FUND: SWAMP	State of Minnesota
SAINT LOUIS	68	20	20	SENE	18.80	\$ 16,920.00		Lowland Hardwoods	Y, River	1356	Fee title	TRUST FUND: SWAMP	State of Minnesota
SAINT LOUIS	68	20	20	SWSE	29.10	\$ 26,190.00		Ash / Lowland Hardwoods	Y, River	1152	Fee title	TRUST FUND: SWAMP	State of Minnesota
SAINT LOUIS	68	20	20	NWSE	31.50	\$ 28,350.00		Ash / Lowland Hardwoods	Y, River	890	Fee title	TRUST FUND: SWAMP	State of Minnesota
SAINT LOUIS	68	20	20	NESE	32.10	\$ 28,890.00		Ash / Lowland Hardwoods	Y, River	2490	Fee title	TRUST FUND: SWAMP	State of Minnesota
SAINT LOUIS	68	20	21	SWSW	3.50	\$ 3,150.00		Lowland Hardwoods	Y, River	2214	Fee title	TRUST FUND: IND SCHOOL	State of Minnesota
SAINT LOUIS	68	20	21	NENE	6.90	\$ 6,210.00		Lowland Hardwoods	Y, River	2136	Fee title	TRUST FUND: SWAMP	State of Minnesota
SAINT LOUIS	68	20	21	NWSW	15.20	\$ 13,680.00		Lowland Hardwoods	Y, River	1605	Fee title	TRUST FUND: SWAMP	State of Minnesota
SAINT LOUIS	68	20	21	NWSE	16.30	\$ 14,670.00		Ash	Y, River	992	Fee title	TRUST FUND: SWAMP	State of Minnesota
SAINT LOUIS	68	20	21	NESW	21.00	\$ 18,900.00		Lowland Hardwoods	Y, River	1106	Fee title	TRUST FUND: SWAMP	State of Minnesota
SAINT LOUIS	68	20	21	SENW	23.30	\$ 20,970.00		Lowland Hardwoods	Y, River	1068	Fee title	TRUST FUND: SWAMP	State of Minnesota
SAINT LOUIS	68	20	21	SENE	29.70	\$ 26,730.00		Lowland Hardwoods	Y, River	1286	Fee title	TRUST FUND: SWAMP	State of Minnesota
SAINT LOUIS	68	20	21	SWNW	30.30	\$ 27,270.00		Lowland Hardwoods	Y, River	1468	Fee title	TRUST FUND: SWAMP	State of Minnesota
SAINT LOUIS	68	20	22	NWNW	3.70	\$ 3,330.00		Lowland Hardwoods	Y, River	1098	Fee title	TRUST FUND: SWAMP	State of Minnesota
SAINT LOUIS	68	20	22	SENW	13.60	\$ 12,240.00		Lowland Hardwoods	Y, River	756	Fee title	TRUST FUND: SWAMP	State of Minnesota
SAINT LOUIS	68	20	22	SWNW	25.00	\$ 22,500.00		Lowland Hardwoods	Y, River	1432	Fee title	TRUST FUND: SWAMP	State of Minnesota
SAINT LOUIS	68	20	28	NESE	1.00	\$ 900.00		Lowland Hardwoods	Y, River	1156	Fee title	TRUST FUND: IND SCHOOL	State of Minnesota
SAINT LOUIS	68	20	28	NESW	1.50	\$ 1,350.00		Lowland Hardwoods	Y, River	1075	Fee title	TRUST FUND: IND SCHOOL	State of Minnesota
SAINT LOUIS	68	20	28	SWNW	4.50	\$ 4,050.00		Ash / Lowland Hardwoods	Y, River	956	Fee title	TRUST FUND: SWAMP	State of Minnesota
SAINT LOUIS	68	20	28	SESW	5.80	\$ 5,220.00		Lowland Hardwoods	Y, River	1432	Fee title	TRUST FUND: IND SCHOOL	State of Minnesota
SAINT LOUIS	68	20	28	NENW	6.50	\$ 5,850.00		Lowland Hardwoods	Y, River	1158	Fee title	TRUST FUND: IND SCHOOL	State of Minnesota
SAINT LOUIS	68	20	28	NWNW	11.10	\$ 9,990.00		Lowland Hardwoods	Y, River	1026	Fee title	TRUST FUND: SWAMP	State of Minnesota
SAINT LOUIS	68	20	28	SENW	21.40	\$ 19,260.00		Ash / Lowland Hardwoods	Y, River	1258	Fee title	TRUST FUND: SWAMP	State of Minnesota
SAINT LOUIS	68	20	28	NWSE	30.30	\$ 27,270.00		Lowland Hardwoods	Y, River	1348	Fee title	TRUST FUND: SWAMP	State of Minnesota
SAINT LOUIS	68	20	28	SWSE	32.00	\$ 28,800.00		Lowland Hardwoods	Y, River	1066	Fee title	TRUST FUND: SWAMP	State of Minnesota
SAINT LOUIS	68	20	29	NWNE	13.80	\$ 12,420.00		Ash	Y, River	1402	Fee title	TRUST FUND: IND SCHOOL	State of Minnesota
SAINT LOUIS	68	20	29	NENE	30.70	\$ 27,630.00		Ash / Lowland Hardwoods	Y, River	2258	Fee title	TRUST FUND: SWAMP	State of Minnesota
KOOCHICHING	68	24	21	SESW	40.00	\$ 36,000.00		Lowland Hardwoods	Y, River	2060	Fee title	TRUST FUND: SWAMP	State of Minnesota
KOOCHICHING	69	24	15	SWNW	8.50	\$ 7,650.00		Lowland Hardwoods	Y, River	2456	Fee title	TRUST FUND: IND SCHOOL	State of Minnesota
KOOCHICHING	69	24	16	NESE	13.00	\$ 11,700.00		Lowland Hardwoods	Y, River	3208	Fee title	TRUST FUND: SCHOOL	State of Minnesota
KOOCHICHING	69	24	16	NENE	16.00	\$ 14,400.00		Lowland Hardwoods	Y, River	3358	Fee title	TRUST FUND: SCHOOL	State of Minnesota
KOOCHICHING	69	24	16	SENE	22.00	\$ 19,800.00		Lowland Hardwoods	Y, River	1438	Fee title	TRUST FUND: SCHOOL	State of Minnesota
KOOCHICHING	69	24	16	NWNE	23.50	\$ 21,150.00		Lowland Hardwoods	Y, River	1296	Fee title	TRUST FUND: SCHOOL	State of Minnesota
CROW WING	138	25	36	SWNW	35.00	\$ 31,500.00		Northern Hardwoods	Y, public water	756	Fee title	TRUST FUND: SCHOOL	State of Minnesota
CROW WING	138	25	36	Lot 1	43.00	\$ 38,700.00		Northern Hardwoods	Y, public water	890	Fee title	TRUST FUND: SCHOOL	State of Minnesota
CASS	139	29	12	Lot 3	35.50	\$ 31,950.00		Red Pine	Y, public water	566	Fee title	TRUST FUND: INTERNAL IMP	State of Minnesota
CASS	140	30	16	SENE	40.00	\$ 36,000.00		Northern Hardwoods	Y, public water	684	Fee title	TRUST FUND: SCHOOL	State of Minnesota
CASS	140	30	16	Lot 1	50.00	\$ 45,000.00		Northern Hardwoods	Y, public water	456	Fee title	TRUST FUND: SCHOOL	State of Minnesota
CLEARWATER	143	38	5	Lot 4	30.60	\$ 27,540.00		Northern Hardwoods	Y, public water	856	Fee title	TRUST FUND: SWAMP	State of Minnesota
BELTRAMI	147	32	2	Lot 6	32.50	\$ 29,250.00		Northern Hardwoods	Y, public water	746	Fee title	TRUST FUND: SWAMP	State of Minnesota
ITASCA	148	29	23	NESW	28.00	\$ 25,200.00		Ash	Y, public water	904	Fee title	TRUST FUND: IND SCHOOL	State of Minnesota
BELTRAMI	149	33	36	NESE	28.00	\$ 25,200.00		Northern Hardwoods	Y, public water	502	Fee title	TRUST FUND: SCHOOL	State of Minnesota
BELTRAMI	149	33	36	NWSE	35.00	\$ 31,500.00		Lowland Hardwoods / Northern Hardwoods	Y, public water	478	Fee title	TRUST FUND: SCHOOL	State of Minnesota

ITASCA	150	27	17	NESW	28.60	\$ 25,740.00		Northern Hardwoods	Y, public water	356	Fee title	TRUST FUND: IND SCHOOL	State of Minnesota
KOOCHICHING	154	29	32	SWSE	18.20	\$ 16,380.00		Lowland Hardwoods	Y, River	942	Fee title	TRUST FUND: IND SCHOOL	State of Minnesota
KOOCHICHING	154	29	32	Lot 4	33.20	\$ 29,880.00		Lowland Hardwoods	Y, River	1808	Fee title	TRUST FUND: IND SCHOOL	State of Minnesota
KOOCHICHING	156	25	34	Lot 13	18.90	\$ 17,010.00		Lowland Hardwoods	Y, River	1262	Fee title	TRUST FUND: IND SCHOOL	State of Minnesota
KOOCHICHING	158	26	29	Lot 8	15.00	\$ 13,500.00		Cedar	Y, River	1498	Fee title	TRUST FUND: IND SCHOOL	State of Minnesota
KOOCHICHING	158	26	29	Lot 7	19.40	\$ 17,460.00		Cedar	Y, River	1126	Fee title	TRUST FUND: IND SCHOOL	State of Minnesota
										186,519.00	approximate shoreline front feet total		
										35.46	approximate miles of shoreline		



PROJECT TITLE: Preserving Old Growth Forests on School Trust Lands

PROJECT MANAGER QUALIFICATIONS

Project Manager – Aaron Vande Linde, School Trust Land Administrator, DNR

The proposed project addresses complex issues and processes – eminent domain proceedings to acquire school trust lands, adhering to DNR’s fiduciary obligation as trustee, and compensating the Permanent School Trust fund for preserving natural resource values. This project will require that the project manager comply with provisions of the Minnesota Constitution, Minnesota statutes, Minnesota Rules of Civil Procedure, and internal DNR processes.

The project manager’s professional background consists of practicing real estate law in the State of Minnesota for seven years, leading the DNR’s acquisition unit, and implementing the DNR’s operational order on school trust land management. The proposed project manager, thus, is well versed with the intricacies of the project.

ORGANIZATION DESCRIPTION

The Minnesota Department of Natural Resources’ overall mission is to work with citizens to conserve and manage the state's natural resources, to provide outdoor recreation opportunities, and to provide for commercial uses of natural resources in a way that creates a sustainable quality of life.

