

**Environment and Natural Resources Trust Fund
2010 Request for Proposals (RFP)**

LCCMR ID: 129-E1

Project Title:

Sustaining a Healthy StCroix Basin through Local Conservation

LCCMR 2010 Funding Priority:

E. Natural Resource Conservation Planning and Implementation

Total Project Budget: \$ \$1,400,000

Proposed Project Time Period for the Funding Requested: 3 years, 2010 - 2013

Other Non-State Funds: \$ \$0

Summary:

Available science will be used to coordinate local efforts targeted at maintaining and enhancing diverse landscapes and improving water quality to sustain a healthy St Croix Basin environment and economy.

Name: Dale Homuth

Sponsoring Organization: DNR

Address: 1200 Warner Rd
St. Paul MN 55106

Telephone Number: (651) 259-5766

Email: dale.homuth@dnr.state.mn.us

Fax: (651) 772-7977

Web Address: www.dnr.state.mn.us

Location:

Region: NE, Metro

County Name: Aitkin, Anoka, Carlton, Chisago, Isanti, Kanabec, Mille Lacs, Pine, Ramsey, Washington

City / Township:

_____ Knowledge Base	_____ Broad App.	_____ Innovation
_____ Leverage	_____ Outcomes	
_____ Partnerships	_____ Urgency	_____ TOTAL

MAIN PROPOSAL

PROJECT TITLE: Sustaining a Healthy St Croix Basin through Local Conservation

I. PROJECT STATEMENT

The St Croix River is a nationally recognized natural resource treasure with significant ecological and recreational values. While the river corridor has maintained many of its unique qualities, the health of the resource continues to be threatened by growing pressures from development, agriculture and recreational demands. A disconnect exists between available science and expertise and the implementation of needed protections to address these pressures in a consistent manner across multiple jurisdictions, at the local community, neighborhood and site level. If the river is to continue providing its many benefits in the future, it will require more targeted delivery of technical assistance and a more focused and coordinated approach among state and federal agencies, local units of government and citizens.

The project will focus on coordinating the local efforts within a basin wide context by providing education/ outreach and incentives for integrated management practices that will help to maintain and enhance the diverse landscape character and quality of water that will sustain a healthy environment and economy. The project will have four main objectives:

Target Resource Management Practices - Watershed Assessment Use available data to assess areas where resource protection and implementation of management practices will result in significant improvements to landscape diversity and water quality for the St Croix and its tributaries.

Link Land Use to Water Quality - Outreach and Education Build on efforts made in 2008-09 in providing opportunities for landowners and local officials to learn about the importance of making appropriate land use decisions that effectively protect ecologic and economic values of the river basin.

Adopting Resource Management Practices - Incentives and Technical Assistance Identify and develop strategies to overcome barriers that local governments and all types of landowners have in adopting innovative land use management and resource protection practices. Barriers may include; cost of implementation, awareness, peer acceptance and lack of design expertise.

Monitoring Effectiveness and Assessing Results Monitor targeted sub-watersheds to determine the effectiveness of various technical assistance, incentives and management strategies and use results to target additional areas for education and implementation of management practices. Results can also be used by Wisconsin partners to further their efforts in working to assist in protecting the overall health, scenic character and economic values of the St Croix Basin.

II. DESCRIPTION OF PROJECT RESULTS

This project will provide technical assistance and coordination of conservation efforts among ten counties, over 100 communities and eight watershed districts within the basin. A three year effort is needed in order to complete all of the objectives.

Result 1: Target Management Practices - Watershed Assessment

Budget: \$ 150,000

Provide a watershed assessment tool for local governments and agencies within the St. Croix Basin to use in identifying and targeting protection of intact high value natural landscapes and to facilitate implementation of improved land use management practices in areas identified where efforts will significantly reduce impacts to water quality.

Deliverable

1. Compilation of existing St Croix basin data for the assessment tool
2. Tailor assessment tools, including MN DNR Watershed Assessment Tool, for use in St Croix Basin and make available on DNR website.
3. Engage citizens, local officials, and agency staff by demonstrating the value and application for use of the tools and data.

Completion Date

Winter 2011

Summer 2012

Fall 2012

Result 2: Link Land Use to Water Quality - Outreach and Education

Budget: \$ 300,000

Continue outreach and education efforts targeted at developing citizen stewardship and highlighting the role that elected/appointed officials and staff have in making appropriate land use decisions that effectively protect the natural and economic values of the St Croix basin.

Deliverable

1. Conduct at least 6 new workshops for local elected/appointed officials (expectation of 50 attendees/workshop).
2. Sponsor at least 2 regional workshops targeted at all stakeholders for evaluation of project achievements and further emphasize implementation of protection and restoration efforts. (100 attendees/workshop).
3. Fund at least 6 local efforts targeted at training the use of integrated management practices for single-family to farm scale landowners.

Completion Date

Spring 2012

Spring 2013

Spring 2012

Result 3: Adopting Management Practices

Budget: \$ 800,000

Provide financial incentives to overcome barriers to the adoption of innovative land use management and resource protection strategies from the multi-jurisdictional to individual property owner scales. (\$325,000.00 for grants to local units of government to develop landowner incentive programs and \$325,000.00 in matching funds for implementation projects.)

Deliverable

1. Prioritize sub-watersheds, identify barriers to adoption of alternative management practices and targeted education to create program demand.
2. Provide grants to local units of government to develop landowner incentive programs and projects.
3. Provide expertise and cost share funding for the implementation of resource protection and adoption of innovative land use practices.

Completion Date

Winter 2010

Spring 2011

Ongoing

Result 4: Monitoring Effectiveness and Assessing Results

Budget: \$ 150,000

Increase monitoring capacity within targeted watersheds to gage effectiveness of management strategies. Assess results to target additional areas for education and implementation of management practices

Deliverable

1. Implement additional monitoring needed for effective assessment of management practices as identified in the St Croix Basin Monitoring Plan.
2. Install additional water flow and quality monitoring equipment
3. Analyze monitoring data to determine changes and effectiveness

Completion Date

Fall 2010

Winter 2010

Spring 2013

III. PROJECT STRATEGY

A. Project Team/Partners

The primary partner will be the St. Croix Basin Team, which is an interagency group that was established by the Commissioners of the MDNR, the WDNR, and the MPCA, and the Superintendent of the St. Croix National Scenic Riverway in 1993. This Team includes participation by the Metropolitan Council, the MN Dept. of Agriculture, the USEPA, the USGS, the University of Minnesota, University of Wisconsin, the 10 Soil and Water Conservation Districts and Counties within the St Croix Basin, the NRCS, the St. Croix Chippewa Indians, the Science Museum of Minnesota, The St. Croix River Association, and various other local governments and non-profit groups.

B. Timeline Requirements

Project would be carried out over a three year period to allow for 2 construction seasons for the implementation of on the ground integrated management practices.

C. Long-Term Strategy

The long-term purpose of this project will be to carry out many of the objectives and goals spelled out by the Basin Team in its various planning documents and status reports, which can be found at:

<http://www.pca.state.mn.us/water/basins/stcroix/stcroix-iwrmp.html>

Project Budget

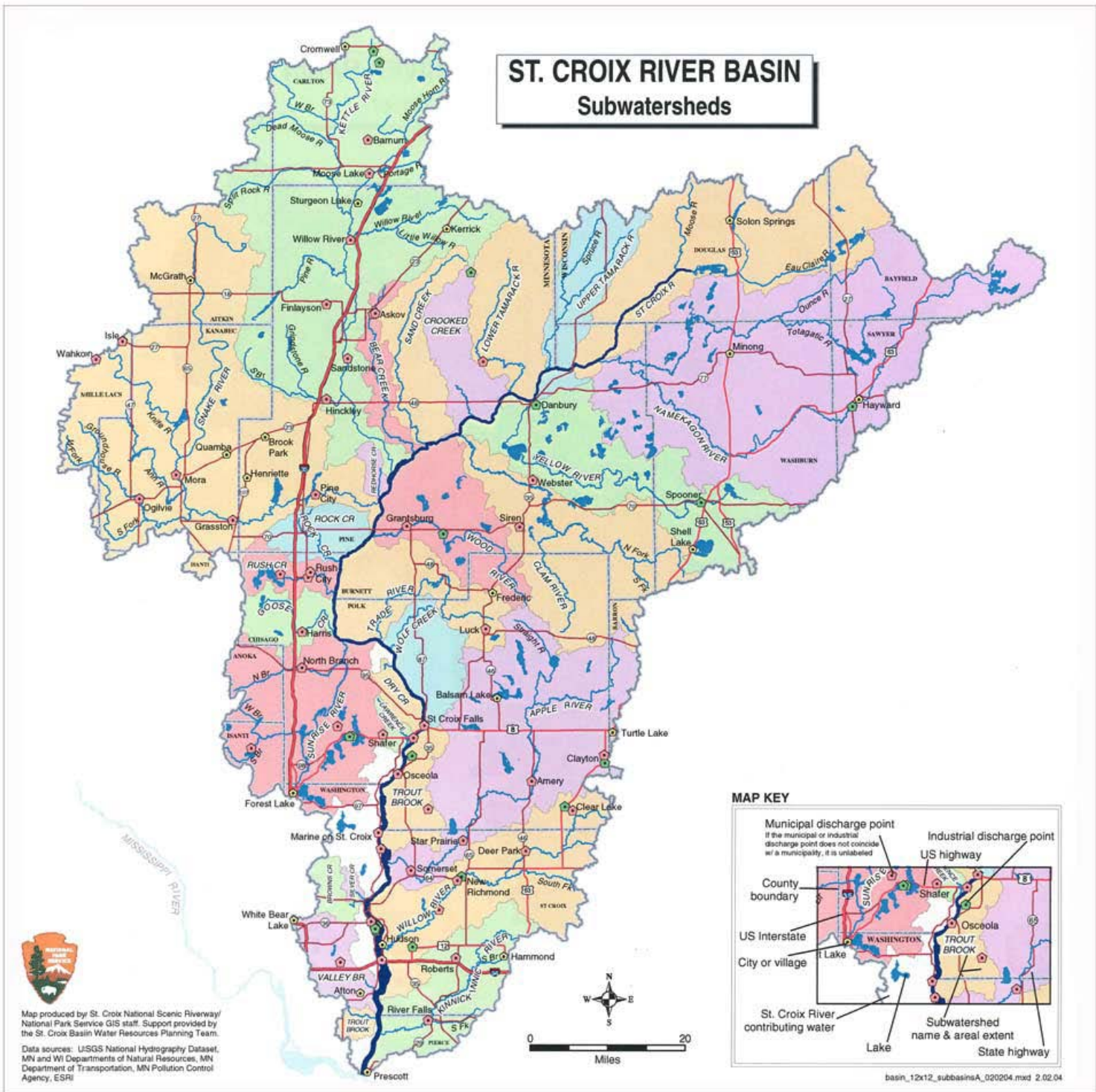
PROJECT TITLE: Sustaining a Healthy St. Croix Basin through Local Conservation

IV. TOTAL PROJECT REQUEST BUDGET (31 months)

<u>BUDGET ITEM</u>	<u>AMOUNT</u>
Personnel: Community Assistant Planners, 2 100% FTES, new hires, unclassified positions December 2010 - June 2013 (31 months) 75% = Salary and 25% = Benefits	\$ 413,000
Contracts: Watershed Assessment- Data compilation, tailor assessment tools, demonstrate tools and value of data (Contracts: 80% partners / 20% consultants)	\$ 100,000
Outreach and education: Workshops, community meetings, training (Contracts: 80% partners / 20% consultants)	\$ 125,000
Adopting Management Practices Prioritize project areas, identify social and economic barriers to adoption of management strategies and develop landowner incentive programs and matching funds for implementation of projects. (50% grants to local units of government to develop landowner incentive programs and 50% in matching funds for implementation projects.)	\$ 650,000
Monitoring Effectiveness and Assessing Results	\$ 80,000
Equipment/Tools/Supplies:	
Laptop Computers (accommodate generally working out in local communities)	\$ 12,000
Travel: In-State (Fleet \$250.00/planner/month, Expenses \$75.00/planner/month)	\$ 20,000
TOTAL PROJECT BUDGET REQUEST TO LCCMR	\$ 1,400,000

V. OTHER FUNDS

<u>SOURCE OF FUNDS</u>	<u>AMOUNT</u>	<u>Status</u>
Other Non-State \$ Being Applied to Project During Project Period:	\$ -	
Other State \$ Being Applied to Project During Project Period: MN DNR Central Region Greenways Program, Community Assistance Program	\$ 10,000	Pending
In-kind Services During Project Period: MN DNR staff in-kind (10% of 7 FTEs/ 31 months) and Local Grant Program Funds from soil and water conservation districts, watershed management organizations, counties.	\$ 360,000	Pending
Funding History:		
St Croix Healthy Waters Initiative, Great River Greening - MPCA 319 Grant	\$ 450,000	
North Branch of the Sunrise monitoring - Clean Water Legacy Act grant	\$ 90,000	
TAPwaters -adapt Soil and Water Assessment Tool (SWAT) for St Croix, Science Museum of Minnesota Research Station - LCCMR grant	\$ 160,000	
Demonstrating Benefits of Conservation Grasslands on Water Quality, Science Museum of Minnesota Research Station - LCCMR grant	\$ 374,000	
St Croix Workshops for elected/appointed officials (4 events) , sponsored by MN DNR, WI DNR, NPS, Northland NEMO, Middle St Croix Watershed	\$ 8,000	
Stillwater Bridge mitigation funding for monitoring and modeling - MN DOT	\$ 400,000	
US Geologic Survey Stream gages-continual funding by USGS, Met Council & NPS		
Reconnaissance study of St Croix Basin funded by US Army Corp of Engineers		
Groundwater modeling by USGS funded by National Park Service		



The St Croix Basin on Minnesota Side includes:
 18 subwatersheds,
 over 190 cities or townships and
 10 Counties.

- | | |
|------------|------------|
| Carlton | Aitkin |
| Mille Lacs | Isanti |
| Kanabec | Pine |
| Chisago | Anoka |
| Ramsey | Washington |

RESUME

April 27, 2009

Dale E. Homuth

Regional Hydrologist
1200 Warner Road
St. Paul, MN 55106
Office: (651) 259-5766

Career Objective To serve the people of Minnesota by providing high quality water resource management expertise.

Experience **Regional Hydrologist:** September 1993 to present, for DNR's Region 3. Responsible for implementing and directing the implementation of all DNR Waters statutes, rules, programs and policies within a 23 county geographic area that includes the seven-county Metro Area. Issue permits to work in the beds of the public waters, and for the appropriation and use of ground and surface water in the Metro Area. Supervise and oversee eleven professional and five support staff. Manage and oversee a budget of about \$1.1 million. Represent the DNR and its Division of Waters at various interagency functions and at all internal inter-divisional functions.

Area Hydrologist: April 1981 to September 1993, for the St. Cloud, Minnesota area. Established first Area Water's office in St. Cloud. Responsible for administering DNR, Division of Waters programs in Sherburne, Stearns & Wright Counties. Handled all aspects of Protected Waters and Appropriation Permits programs and the Shoreland, Flood Plain and Wild & Scenic Rivers Management programs, except the signing of certain documents. Acted as the DOW's expert on all permit violation matters in area. Administered numerous grants relating to Flood Damage Reduction and Stream Maintenance. Supervised a Secretary and various Student Interns, and acted as Lead Worker for a Staff Hydrologist. Successfully dealt with controversies including the Lake Pulaski Flood, other high lake level issues, numerous development issues, wetland inventory and protection issues, County Ditch Improvement issues, the drought of 1988, and the formation of several LID's & WSD's.

Area Hydrologist: August 1980 to April 1981, for DNR's Region V, stationed in Rochester. Duties were similar to St. Cloud Area, but concentrated on Flood Plain Management and Protected Waters Inventory. Handled DNR testimony at Protected Waters Inventory hearings.

Regional Wild & Scenic Rivers Specialist: September 1977 to August 1980 for DNR's Region 3, was stationed in Brainerd to coordinate all land use aspects of the Wild & Scenic Rivers program as a Hydrologist. Assisted with protected waters permit review and administration of the Shoreland and Flood Plain programs. Acted as St. Cloud Area Hydrologist during the last year.

Rivers Project Leader: February 1975 to August 1977 was stationed in St. Paul for DNR's Division of Parks & Recreation. Work consisted primarily of planning, writing, promoting and implementing management plans for the State Wild & Scenic Rivers program. Primarily responsible for plans done on Rum and Crow Rivers. Assisted on other plans involving the St. Croix, Mississippi, Snake, Cannon, Root, Kettle and Crow Wing Rivers.

Education Bachelor of Science degree from University of Minnesota, St. Paul Campus in June 1972. Majored in Recreation Resource Management which was an interdisciplinary major with advisers and emphasis in Soils, Forestry, Hydrology, Sociology, Economics, Horticulture and Resource and Community Development.

Postgraduate Education and Training taken include: Management of Forest Environments; Accounting; Water Safety Training; Sewage Treatment Workshops; Computer Programing; Hydrology & Hydraulic Design; Geotextile Fabric Technology; Flood Proofing; Advanced Communications; HEC1 and HEC2 Training; Successful Negotiation; Leadership Development Academy; Wetland Delineation Training; Working with Conflict Course; Supervisory and Manager CORE Training; Hydraulics and Hydrology; River Ice Seminar; ArcView GIS Training; and attendance at numerous conferences and seminars relating to hydrology, hydraulics, personnel management, and natural resource management.