

**Environment and Natural Resources Trust Fund
2010 Request for Proposals (RFP)**

LCCMR ID: 101-C

Project Title:

Minnesotas Habitat Conservation Partnership

LCCMR 2010 Funding Priority:

C. Habitat Restoration, Enhancement, and Acquisition

Total Project Budget: \$ \$8,272,890

Proposed Project Time Period for the Funding Requested: 2 years, 2010 - 2012

Other Non-State Funds: \$ \$7,990,040

Summary:

Minnesotas Habitat Conservation Partnership requests \$8,272,890 and commits \$7,990,040 to restoring or protecting 31,727 acres within defined project areas under funding priority C - Habitat Restoration, enhancement and acquisition.

Name: Matt Holland

Sponsoring Organization: Pheasants Forever (on behalf of all partners)

Address: 679 W River Dr
New London MN 56273

Telephone Number: (320) 354-4377

Email: mholland@pheasantsforever.org

Fax: (320) 354-4377

Web Address: www.mnhabitatcorridors.org

Location:

Region: Statewide

County Name: Statewide

City / Township:

_____ Knowledge Base	_____ Broad App.	_____ Innovation
_____ Leverage	_____ Outcomes	
_____ Partnerships	_____ Urgency	_____ TOTAL

Table 1. Phase VII - Habitat Conservation Partnership Project Budget and Accomplishments

	Revised Request	Other Funds Revised	Total Revised	Grant Acres Revised	Partner Acres Revised
1. Project Coordination, Mapping, Data Management					
a) Project Coordination and Mapping	\$ 150,000	0	\$ 150,000	0	0
SUBTOTAL	\$ 150,000	-	\$ 150,000	0	0
2. Restoration & Management					
b) Partners for Wildlife					
c) Shallow Lake Enhancement	125,000	125,000	\$ 250,000	500	500
d) Shallow Lake Assessment and Management	320,000	75,000	\$ 395,000	200	
e) Shallow lakes, impoundments, wild rice & waterfowl	325,000	0	\$ 325,000		
f) Campaign for Conservation - Restoration	147,000	50,000	\$ 197,000	1,680	
g) Wildlife Areas Management	653,290		\$ 653,290	16,473	3,789
h) Fisheries Habitat Restoration	50,000		\$ 50,000		
i) Set Out Seedlings/Bluffland Restoration	200,000	-	\$ 200,000		
j) Prairie Management	85,000	18,000	\$ 103,000	120	
k) Working Lands Partnership	250,000	-	\$ 250,000	340	
SUBTOTAL	144,000	25,000	\$ 169,000	80	
	2,299,290	293,000	2,592,290	19,393	4,289
3. Conservation Easement Programs					
a) Shoreland Protection Program	\$ 600,000	600,000	\$ 1,200,000	300	300
b) Shallow Lake Easements	680,000	240,000	\$ 920,000	200	
c) Wetlands Reserve Program	900,000	4,000,000	\$ 4,900,000		6,000
SUBTOTAL	\$ 2,180,000	\$ 4,840,000	\$ 7,020,000	500	6300
4. Habitat Acquisition Programs					
a) Prairie Wetland Heritage	\$ 750,000	\$ 700,000	\$ 1,450,000	205	205
b) Fisheries Land Acquisition	750,000	0	\$ 750,000	150	
c) Critical Lands Protection Program	1,200,000	600,000	\$ 1,800,000	100	100
d) Campaign for Conservation	393,600	1,057,040	\$ 1,450,640	49	186
e) MN Valley Refuge Expansion	500,000	500,000	\$ 1,000,000	125	125
f) Professional Services	50,000		\$ 50,000	-	-
SUBTOTAL	\$ 3,643,600	\$ 2,857,040	\$ 6,500,640	629	616
TOTAL	\$ 8,272,890	\$ 7,990,040	\$ 16,262,930	20,522	11,205

MAIN PROPOSAL

PROJECT TITLE: Minnesota's Habitat Conservation Partnership

I. PROJECT STATEMENT: Sustained funding and effort by public/private partnerships is essential to protection and restoration efforts aimed at restoring landscape and/or natural resource function. Much of our prairie, wetlands, shorelines, and watersheds have been degraded over a roughly 150-year period, and we cannot restore the "remarkable place known as Minnesota," without a long-term view, ongoing funding, and focus from conservationists towards that goal. Minnesota's Habitat Conservation Partnership is a sustained effort (est. in 2000) designed to restore and protect working landscapes & restore landscape function through such a long-term effort.

We propose to restore, manage or protect 31,727 acres within defined project areas in phase VII of this effort, addressing many of the recommendations cited in the *Statewide Conservation and Preservation Plan Final Plan* which states "...**habitat issues are arguably the most important issues facing the conservation and preservation of natural resources throughout Minnesota.**" Habitat loss, degradation and fragmentation are addressed in this proposal in a focused way towards improving the connectivity and the functionality of priority habitat while providing public benefits and quality of life. We address habitat issues by doing habitat restoration, habitat enhancement, and permanent habitat protection (easement & fee-title).

Portions of this proposal specifically address the following habitat recommendations made in the SCPP mentioned above: *Priority Land Protection, Protect Critical Shorelands of streams and lakes, Improve connectivity and access to outdoor recreation, Restore and protect shallow lakes, Restore land, wetlands, and wetland associated watersheds, Protect and restore critical in-water habitat of lakes and streams, Keep water on the landscape.* This proposal addresses funding priorities A – Water Resources, C – Habitat Restoration and Protection, and D – Invasive Species of the 2010 LCCMR request for proposals. Several individual proposals include monitoring. We are fifteen formal partners bringing a committed \$7,990,040 (roughly a 1:1 ratio) in other non-state resources to bear on protection of our natural resources. The design and makeup of our project areas reflect areas of great need and opportunity. A summary table detailing how individual partners propose to restore land, acquire easements, and acquire land in fee is available upon request. The attached map describes project areas (identical to phase VI project areas) as well as demonstrates project locations since inception. Individual partner proposals, budgets and resolution letters are available on request.

II. DESCRIPTION OF PROJECT RESULTS

Result 1: Project Coordination, Mapping, Data Management; Budget: \$ 150,000 ETF, \$0 Other Funds. Provide for the overall coordination, data management and mapping needs of the Habitat Conservation Partnership.

Deliverable	Completion Date
1. Project mapping	6/30/12
2. Project Coordination	6/30/12
3. Project Reporting	6/30/12

Result 2: Habitat Restoration and Management Budget: \$2,299,290 ETF, 293,000 Other Funds. Restore, enhance or manage 23,682 acres of wetland, prairie grassland, oak savannah, shallow lake, forest, bluff land, stream and river habitat.

Deliverable **Completion Date**

1. Restore/enhance/manage 23,682 acres **6/30/12**

Result 3: Habitat Protection – Easement Acquisition Budget: \$2,180,000 ETF, 4,840,000 Other Funds. Acquire the perpetual rights to permanently protect 6,800 acres of habitats that provide multiple benefits for conservation. Habitats prioritized for protection include: wetland, shoreland, prairie, grassland, lakeshore, shallow lake, forest, bluff land, stream and river habitat.

Deliverable **Completion Date**

1. Acquire 6,800 acres in easement **6/30/12**

Result 4: Habitat Protection – Fee Title Acquisition Budget: \$3,643,600 ETF, 2,857,040 Other Funds. Acquire fee-title to permanently protect 1,245 acres of habitats that provide multiple benefits for conservation. Habitat types prioritized for protection include: wetland, shoreline, remnant prairie, grassland, lakeshore, shallow lake, forest, bluff land, stream and river habitat. Initial habitat and site development of all acquired properties will be completed with ENTF funds or other funds for new Wildlife Management Areas (DNR initial development plan). For Waterfowl Production Areas, other funds or ENTF funds will bring newly acquired units up to minimum standards.

Deliverable **Completion Date**

1. Acquire 1,245 acres in fee-title **6/30/12**

III. PROJECT STRATEGY

A. Project Team/Partners: Fifteen formal partners are collaborating to deliver this proposal to Minnesota. They include: Community GIS Services, Ducks Unlimited, Friends of the Detroit Lakes Wetland Management District, Leech Lake Reservation, Minnesota Department of Natural Resources, Division of Fish & Wildlife, Division of Ecological Services, Minnesota Environment and Natural Resources Trust Fund, Minnesota Land Trust, Minnesota Valley National Wildlife Refuge Trust, Inc., National Wild Turkey Federation, Pheasants Forever, The Nature Conservancy, The Trust for Public Land, USDA-Natural Resources Conservation Service, United States Fish & Wildlife Service. We also recognize that this proposal will have dozens of contract partners, landowner partners, and other partners to achieve stated goals.

B. Timeline Requirements: We propose a 2-year timeline: July 1, 2010 – June 30, 2012

C. Long-Term Strategy: The Habitat Conservation Partnership exists to restore fragmented & degraded landscapes through on the ground habitat restoration and protection. With the support the LCCMR & ENTF funding, the formal partners of HCP focus their work in defined project areas to build upon existing investments in conservation. We largely have built upon proven, successful habitat programs and accelerated or enhanced the conservation benefit through the collective efforts of the Habitat Conservation Partnership. In addition, our strategy has always been to leverage precious ENTF funds with federal (e.g. Wetlands Reserve Program Funding has been increased from USDA as a result of the efforts of ENTF and this Partnership) and private programs (e.g. TNC's Conservation by Design efforts) that have mutual habitat restoration and protection goals. Finally, HCP provides for statewide collaboration of partners involved in habitat restoration and protection.

Project Budget

Minnesota's Habitat Conservation Partnership

May 1, 2009 Proposal (this document summarizes 20 individual proposals)

IV. TOTAL PROJECT REQUEST BUDGET (2 years)

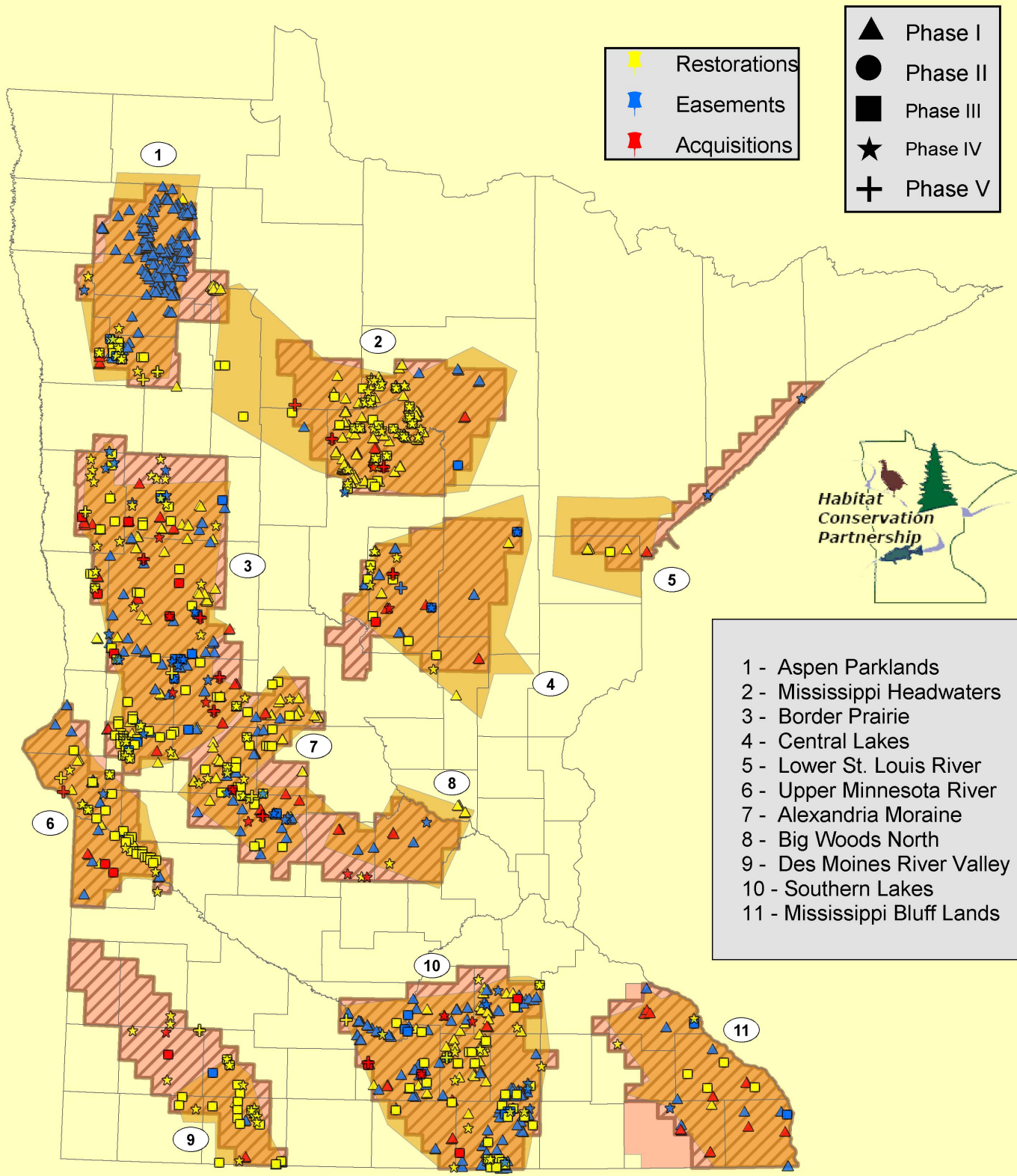
<u>BUDGET ITEM</u>	<u>AMOUNT</u>
Personnel:	\$ -
15 of 20 individual proposals request personnel to complete various aspects of habitat protection & restoration work. FTE detail is available upon request.	\$ 2,584,667
Contracts:	\$ -
12 of 20 individual proposals requested funds to contract services to complete various aspects of habitat protection and restoration work. Contract detail is	\$ 1,131,400
Equipment/Tools/Supplies: Five restoration/management proposals include requests for equipment, tools and supplies.	\$ 201,900
Acquisition (Fee Title or Permanent Easements): A summary table of partners and programs requesting easement or fee title acquisition funding is available upon request. ENTF funds will be used to acquire 500 acres of easements and 629 acres of fee-title (DNR, USFWS or other appropriate agency)	\$ 4,012,000
Travel: In-state travel essential to completing proposed work only	\$ 82,923
Additional Budget Items: In this column, list any additional budget items that do not fit above categories. Four individual work plans requested budget items that did not fit into LCCMR categories provided. A majority of this expense is dedicated to easement stewardship as approved by LCCMR	\$ 260,000
TOTAL PROJECT BUDGET REQUEST TO LCCMR	\$ 8,272,890

V. OTHER FUNDS

<u>SOURCE OF FUNDS</u>	<u>AMOUNT</u>	<u>Status</u>
Other Non-State \$ Being Applied to Project During Project Period: Please see Table 1 for individual non-state fund contributions to this proposal. Sources of other non-state funds include but are not limited to: USDA - Wetlands Reserve Program Funding, USFWS, North American Wetlands Conservation Act, donations of land value, private/NGO contributions, Bureau of Indian Affairs,.	\$ 7,990,040	PENDING/ SECURED
Other State \$ Being Applied to Project During Project Period: There will be other state funding brought to certain programs and projects that will work in concert with this effort and partnership to accomplish mutual objectives. Sources include Heritage Enhancement Grants, DNR, Landowner Incentive Program (DNR), RIM.	\$ 771,000	PENDING
In-kind Services During Project Period: In-kind comes from USFWS, DU, and USDA-NRCS	\$ 280,198	SECURED
Remaining \$ from Current Trust Fund Appropriation (if applicable): Phase V (2008): \$2,966,822 remain as of December 1, 2008 update report. All Phase V funds will be expended prior to July 1, 2010. Phase IV (2007): \$1,444,953 remain as of December 1, 2008 update report. All Phase IV funds will be expended prior to July 1, 2009. HCP is recommended for 2009 funding but the bill has not passed the legislature at the time of this proposal.	\$ 4,411,775	All current funding for HCP will be expended prior to July 1, 2010.
Funding History:	\$ -	

Habitat Conservation Partnership Accomplishments

Restoring Minnesota's Fish and Wildlife Habitat Corridors



April 27, 2009

Organization Description

Pheasants Forever is a non-profit 501(c)3 conservation organization dedicated to improving pheasant and other wildlife populations through habitat restoration and development, changes in land management policies and public awareness and education. Pheasants Forever was incorporated in 1982 here in Minnesota and was established out of concern for the decline in pheasant populations. Today, Pheasants Forever has over 115,000 members and 650 chapters nationwide doing grassroots conservation. In Minnesota, Pheasants Forever has 22,000 members and 73 chapters. Since inception, Pheasants Forever in Minnesota has spent over \$16,000,000 on conservation resulting in the development of over 40,000 acres of nesting cover, 62,000 acres of food plots, 9,000 acres of wetlands, and 17,000 acres of land acquisition. PF in Minnesota has also planted 3.2 million trees.

Project Manager Qualifications

Matt Holland, Senior Field Coordinator
Pheasants Forever, Inc.

679 West River Drive, New London, MN 56273

B.A. Biology - Gustavus Adolphus College, St. Peter Minnesota, 1993

M.S. Wildlife Science - South Dakota State University, Brookings, SD, 1997



The project manager experience includes coordinating the 18-partner Habitat Conservation (formerly corridors) Partnership since 2002. Also, the project manager administered or is currently administering the following grants:

1. LCMR Prairie Heritage Fund -Phase 1 \$500,000
2. LCMR Prairie Heritage Fund - Phase 2 \$500,000
3. LCMR Prairie Heritage Fund - Phase 3 \$800,000 (Habitat Corridors Partnership)
4. LCMR Critical Lands Conservation Initiative - \$430,000 (Habitat Corridors Partnership)
5. NAWCA Prairie Wetlands Conservation Initiative - Phase I \$ 785,500
6. NAWCA Prairie Wetlands Conservation Initiative - Phase II \$1,000,000
7. NAWCA Centennial Pothole Venture - Phase I \$1,000,000
8. NAWCA Northern Tallgrass Prairie Wetland Conservation Initiative Phase III \$1,000,000
9. NAWCA Border Prairie Wetlands - \$1,000,000
10. NAWCA Shell Rock River Watershed Project - \$50,000
11. NAWCA Mud Lake WMA Project - \$50,000
12. DNR WMA Enhancement Grants - \$115,000
13. NFWF Minnesota Buffer Enrollment Program - \$50,000
14. NFWF CP23a and CREP Incentive Program - \$150,000

The project manager also has participated in the Prairie Pothole Joint Venture Management Board, MN Wetland Restoration Strategy Committee, WMA Citizen Advisory Committee, Pheasant Stamp Oversight Committee, Budget Oversight Committee (DNR), Farmland Wildlife Committee, Farm Bill Assistance Partnership, Non-toxic Shot Advisory Committee, State Technical Committee (USDA).

