



Environment and Natural Resources Trust Fund (ENRTF)

M.L. 2017 Work Plan

Date of Report: November 4, 2016

Date of Next Status Update Report: February 1, 2018

Date of Work Plan Approval:

Project Completion Date: June 30, 2020

Does this submission include an amendment request? No

PROJECT TITLE: Restoring our Metro Lands and Waters: MeCC 10

Project Manager: Wiley Buck

Organization: Great River Greening

Mailing Address: 35 W. Water St., Ste. 201

City/State/Zip Code: St. Paul, MN 55107

Telephone Number: (651) 665-9500 x15

Email Address: wbuck@greatrivergreening.org

Web Address: www.greatrivergreening.org

Location: Carver, Chisago, Hennepin

Total ENRTF Project Budget:

ENRTF Appropriation: \$524,000

Amount Spent: \$0

Balance: \$524,000

Legal Citation: M.L. 2016, Chp. xx, Sec. xx, Subd. xx

Appropriation Language:

I. PROJECT TITLE:

II. PROJECT STATEMENT: Great River Greening selects high priority restoration projects within Metropolitan Conservation Corridors (MeCC) and works with committed landowners to evaluate, restore, and engage the community. Proposed are five of these projects, each one restoring a parcel that was previously acquired with Trust Fund dollars and/or having a strong community engagement opportunity. We also propose to continue developing applications for conservation haying, improvements in restoration monitoring, and an enhanced opportunity for citizens to become more deeply engaged in restoration maintenance through a pilot Site Steward program. We will restore 250 acres of critical habitat, engage 530 volunteers, improve restoration practices, foster partnerships among an array of local, state, federal, non-profit, and private entities, promote community stewardship of urban natural resources, and leverage \$132,000 in non-state dollars.

Much of our remaining habitat in the metro area is threatened by conversion, fragmentation, altered hydrology, invasive species, and a public that is spending less time in natural areas. Restoration and management of these habitats is needed now and into the future to retain Minnesota’s natural heritage for generations, protect rare and declining species, protect our clean water, and reconnect habitat corridors.

III. OVERALL PROJECT STATUS UPDATES:

Project Status as of February 1, 2018:

Project Status as of August 1, 2018:

Project Status as of February 1, 2019:

Project Status as of August 1, 2019:

Project Status as of February 1, 2020:

Overall Project Outcomes and Results:

IV. PROJECT ACTIVITIES AND OUTCOMES:

ACTIVITY 1: Restore 250 acres of Upland Habitat

Description: We will restore 252 acres of priority forest, prairie, woodland, and savanna over five sites located within the mapped Metro Conservation Corridors. Projects are designed to preserve high quality features, prevent further degradation, and/or protect species of greatest conservation need. Actions include invasive removal, woody encroachment reduction, prescribed burning, seeding, planting, and conservation haying. Projects are designed and managed by Greening ecologists, and field work under Activity 1 will be conducted by Greening crew and subcontractors). Activities that require specialized training or safety protocol/equipment (e.g. herbicide application, chainsaw operation, prescribed burning, large and/or specialized equipment operation) are contained in this Activity.

All projects will include a management plan and initial restoration evaluation at the end of the grant period. Subcontracts are awarded competitively: RFP’s are posted publicly (questcdn.com); distributed to contractors who have requested to be on our mailing list; and quotes are systematically ranked by a review team before being awarded.

Summary Budget Information for Activity 1:

ENRTF Budget: \$ 418,270
Amount Spent: \$ 0
Balance: \$ 418,270

Outcome	Completion Date
1. Write restoration and management plans for 5 sites	June 30, 2018
2. Restore 5 sites, 252 acres total	June 30, 2020

Project Status as of February 15, 2018:

Project Status as of August 1, 2018:

Project Status as of February 1, 2019:

Project Status as of August 1, 2019:

Project Status as of February 1, 2020:

Final Report Summary:

ACTIVITY 2: Volunteer Restoration Events

Description: We will purchase necessary seeds, plants, and other restoration and event supplies needed to engage 530 volunteers in select meaningful, appropriate (safe, impactful), and cost-effective restoration activities such as planting, hauling and stacking cut brush, monitoring, seeding, and fencing. These activities will occur on the same acres reported in Activity 1 as part of the overall restoration.

Volunteer Events include Saturday events open to the public, and private group events (church, corporate, school, civic, work, etc.). A total of 530 volunteers will be engaged over a projected 7 events.

Volunteer investment promotes community engagement in the long term success of the restoration projects, often in the form of monitoring and reporting, and provides an active outdoor educational opportunity that can result in transferable restoration skills and knowledge applied beyond the project boundaries.

Table 2.1: Anticipated volunteer outputs

Task	Unit	Cost/Unit *
Monitoring	Acre	\$5-\$50
Plugging	Plug	\$1.50
Planting	Shrub	\$15
Planting	#10 Tree	\$25
Woodland Hand Seeding	Acre	\$50-\$175
Stacking	Acre	\$400-\$1,800

*Cost/Unit is comprised of Greening labor costs to recruit, coordinate, and oversee volunteers; volunteer event supplies; associated mileage; and hand tool replacement.

Summary Budget Information for Activity 2:

ENRTF Budget: \$ 77,730
Amount Spent: \$ 0
Balance: \$ 77,730

Outcome	Completion Date
1. Engage 530 volunteers in restoration tasks	June 30, 2020

Project Status as of February 1, 2018:

Project Status as of August 1, 2018:

Project Status as of February 1, 2019:

Project Status as of August 1, 2019:

Project Status as of February 1, 2020:

Final Report Summary:

ACTIVITY 3: Digitized Restoration Monitoring and Advanced Site Steward Program

Description: To advance the practice of restoration, Greening will continue to refine our protocol and methodology for the restoration evaluations, to improve the cost-effectiveness and efficacy of future efforts. We will institute new DNR recommendations for field equipment and software, which includes Apple platform field recording devices (e.g. iPad mini’s) as well as [ESRI Survey123](#) and [ArcCollector](#) software/applications. This will enable us to upload our data into a compatible shared database. We will coordinate closely with MN DNR and MniT staff to finalize protocols. We will complete all of the initial evaluations from this appropriation, 14 ‘third year’ evaluations from our ML 2013 appropriation, and upgrade our 18 ‘third year’ evaluations of our ML 2011 projects into this electronic format. Also, we will explore opportunities to use this equipment to improve our efficiencies for initial site assessments, plant surveys, and other planning activities.

To address an industry-wide challenge for sustainable maintenance strategies, and offer a deeper engagement opportunity for volunteers, we will pilot a Site Steward volunteer program. The program will promote a long-lasting and action-based conservation ethic at sites of past and present Environmental Trust Fund projects. We will recruit and train skilled volunteers to work at four sites yearly under the guidance of Greening ecologists. Stewardship activities will include vegetation monitoring, invasive species management, seed collection, planting, and other tasks to further the natural resource management goals. Outcomes of this program are twofold. Greening will track the acres affected, the number restoration activities completed, and assess the ways in which Site Stewards can best meet the long-term maintenance needs for restored natural areas. Secondly, the Site Stewards will develop in-depth knowledge of the management issues of restoration areas, increase their capability with invasive and native plants, and deepen their commitment to conservation activities. Site Stewards will contribute over 240 hours of natural resource work during the course of the grant, with potential for future contributions by Site Stewards trained in the program.

Summary Budget Information for Activity 3:

ENRTF Budget: \$ 28,000
Amount Spent: \$ 0
Balance: \$ 28,000

Outcome	Completion Date
1. Upgrade 18 ‘third year evaluations’ of our 2011 projects to digital format.	June 30, 2018
2. Complete the 5 ‘initial evaluations’ from this appropriation, in digital format.	June 30, 2020
3. Complete 14 ‘third year evaluations’ of our 2013 projects, in digital format.	June 30, 2020
4. Engage Site Stewards at 4 sites; complete pilot program evaluation.	June 30, 2020

Project Status as of February 1, 2018:

Project Status as of August 1, 2018:

Project Status as of February 1, 2019:

Project Status as of August 1, 2019:

Project Status as of February 1, 2020:

Final Report Summary:

V. DISSEMINATION:

Description:

Greening anticipates periodic reporting on this project through our various electronic media outlets: The Greening monthly e-newsletter (reaches 7,000) (subscribe at www.greatrivergreening.org); Facebook (1344 likes) (Like us on Facebook <https://www.facebook.com/greatrivergreening>); and Twitter (545 followers) (Follow us on Twitter <https://twitter.com/greatrivergreen>).

Results of this tenth phase of the Metro Conservation Corridors (MeCC) partnership appropriation will also be shared with colleagues including the seven other organizations in the MeCC partnership; our landowning partners; and other avenues as the opportunity arises.

Project Status as of February 1, 2018:

Project Status as of August 1, 2018:

Project Status as of February 1, 2019:

Project Status as of August 1, 2019:

Project Status as of February 1, 2020:

Final Report Summary:

VI. PROJECT BUDGET SUMMARY:

A. ENRTF Budget Overview:

Budget Category	\$ Amount	Overview Explanation
Personnel:	\$ 90,500	Staff time for oversight, volunteer events, restoration implementation, procuring services, vegetation monitoring, soil sampling. Program Manager/Ecologist: \$16,600 (78% salary, 22% benefits; 0.07 FTE). Restoration Ecologists: \$29,700 (83% salary, 17% benefits; 0.18 FTE). Director of Conservation: \$4,000 (estimate 83% salary, 17% benefits; 0.02 FTE). Grants Management Assistant: \$7,200 (90% salary, 10% benefits; 0.10 FTE). Volunteer & Outreach Manager: \$14,100 (85% salary, 15% benefits; 0.11 FTE). Field Coordinator: \$4,000 (85% salary, 15% benefits; 0.02 FTE). Field Technicians: \$5,600 (92% salary, 8% benefits; 0.02 FTE). Director of Finance: \$5,000 (78% salary, 22% benefits; 0.02 FTE). Financial Operations Manager: \$3,100 (84% salary, 16% benefits; 0.02 FTE). Communications Manager:

		\$1,200 (80% salary, 20% benefits; 0.01 FTE). All FTE totals are for 3 years.
Professional/Technical/Service Contracts:	\$279,700	Competitive RFP: site preparation and prairie seeding, invasive species control, woody harvest, thinning, forestry mowing, herbicide treatment prescribed fire, haying; vegetation monitoring; pollinator monitoring.
Equipment/Tools/Supplies:	\$143,210	\$132,000 for Seed, plugs and shrubs, and trees. \$8,500 for fencing, erosion control mats, herbicide. \$910 for personal protective gear and hand tools for volunteers and technicians; repair and maintenance of mowers, ATV, UTV, and sprayers. \$1,800 for data plan for data collection on digital devices in the field.
Travel Expenses in MN:	\$ 5,210	In-state mileage to/from sites, meetings, purchases. 9.3K mi @ \$0.54/mi
Other:	\$ 5,380	Volunteer Event Supplies & Rentals: Healthy food/bvg (\$3820); table/chair/portable toilet (\$960); 1 large tent rental (\$600). 530 volunteers.
TOTAL ENRTF BUDGET:		\$524,000

Explanation of Use of Classified Staff: N/A

Explanation of Capital Expenditures Greater Than \$5,000: N/A

Number of Full-time Equivalent (FTE) Directly Funded with this ENRTF Appropriation: 1.9 FTE

Number of Full-time Equivalent (FTE) Estimated to Be Funded through Contracts with this ENRTF Appropriation: 2.2 FTE

B. Other Funds:

Source of Funds	\$ Amount Proposed	\$ Amount Spent	Use of Other Funds
Non-state			
City of Chanhassen	\$25,000	\$	Chanhassen Nature Preserve
Minnehaha Creek Watershed District	\$25,000	\$	Six Mile Marsh
City of St. Louis Park	\$30,000	\$	Westwood Hills Nature Center III
City of Lindström	\$20,000	\$	Allemansrätt Wilderness Park IV
Chisago City	\$5,000	\$	Ojiketa Regional Park
ESRI Software	\$25,000	\$	Reduced price for software/applications
Private donations	\$2,000	\$	TBD; likely volunteer events
Volunteer In-kind services	\$16,000	\$	1325 volunteer hours at \$12/hr
TOTAL OTHER FUNDS:	\$148,000	\$	

VII. PROJECT STRATEGY:

A. Project Partners:

Chisago City (Ojiketa Regional Park): Non-state funding

City of Chanhassen (Chanhassen Nature Preserve): Non-state funding

City of Lindström (Allemansrätt Wilderness Park): Non-state funding

City of St. Louis Park (Westwood Nature Center): Non-state funding
 Minnehaha Creek Watershed District (Six Mile Marsh Prairie): Non-state funding
 Private Donors (pursued as the project moves forward): Non-state funding
 Volunteers (recruited during implementation): Non-state in-kind services
 Metro Conservation Corridors Partnership (MeCC) organizations: In-kind project development, dissemination

B. Project Impact and Long-term Strategy:

This project will add to the 9,500 acres already restored by the Metro Conservation Corridors partnership. In particular, this project will address restoration and engagement opportunities in the urban core; areas experiencing conversion pressure; and the west metro which to date has been under-served by Greening activities. By continuing to implement conservation haying as a restoration and management practice; and digitizing evaluations, Greening will promote cost-effective and beneficial restoration techniques with wide application.

Engaging volunteers in meaningful, appropriate and transferrable outdoor restoration activities on natural areas will allow community members to learn, enjoy, and understand the restoration process, which are key elements for safeguarding our natural treasures through time. To date, Greening has engaged 7,600 volunteers in the Corridors; nearly half of Great River Greening’s volunteers are under the age of 25. In this proposal we are piloting a Site Steward program that has the potential for a deeper and longer-term engagement for this community of environmentally-minded citizens. The Site Steward program promotes a cost-effective, sustainable approach to restoration maintenance.

Opportunities to restore new sites, and subsequent phases covering additional acres/shoreline will continue into the future. The mapped Metro Conservation Corridors provide direction as to where our efforts are best focused.

C. Funding History:

Funding Source and Use of Funds	Funding Timeframe	\$ Amount
ENRTF M.L. 2011. MeCC VI: Restoring our Lands and Waters	July 1, 2011 – December 1, 2014	\$400,000
OHF M.L. 2012. Anoka Sand Plain Habitat Restoration and Enhancement, Phase II – Allemansrätt project	July 1, 2012 – June 30 2017	\$30,700
ENRTF M.L. 2013. MeCC VII: Restoring our Lands and Waters	July 1, 2013 – June 30, 2016	\$208,000
ENRTF M.L. 2014. Upland and Shoreline Habitat Restoration in the Greater Metropolitan Area	July 1, 2014 – June 30, 2017	\$300,000
ENRTF M.L. 2015. MeCC VIII: Enhancing Restoration Techniques for Improved Climate Resilience and Pollinator Conservation	July 1, 2015 – June 30, 2018	\$400,000
ENRTF M.L. 2016. Upland, Wetland, and Shoreline Restoration in Greater Metropolitan Area	July 1, 2016 – June 30, 2019	\$509,000

VIII. REPORTING REQUIREMENTS:

- The project is for 3 years, will begin on July 1, 2017, and end on June 30, 2020.
- Periodic project status update reports will be submitted February 1 and August 1 of each year.
- A final report and associated products will be submitted between June 30 and August 15, 2020.

IX. VISUAL COMPONENT or MAP(S):

See attached.

X. FEE TITLE ACQUISITION/CONSERVATION EASEMENT/RESTORATION REQUIREMENTS:

A. Parcel List:

See attached.

B. Acquisition/Restoration Information:

All restoration activities completed with these funds will occur on land permanently protected by a conservation easement or public ownership.

Restoration and management plans will, to the extent practical, be consistent with the highest quality conservation and ecological goals for the restoration site. In determining the restoration target community, consideration will be given to soil, geology, topography, historic vegetation, existing conditions, anticipated future conditions, size, and location. Plans will include the proposed timetable for implementing the restoration, including site preparation, establishment of diverse plant species, maintenance, and additional enhancement to establish the restoration; identify long-term maintenance and management needs of the restoration and how the maintenance, management, and enhancement will be financed; and take advantage of the best available science and include innovative techniques to achieve the best restoration. These plans will be stored electronically in project folders.

All restoration projects and habitat improvements will follow the Board of Soil and Water Resources "Native Vegetation Establishment and Enhancement Guidelines" when developing specifications for RFPs and contracts; and developing species lists for contracts, volunteer events, and field staff implementation. Implementation of the latest developments in pollinator habitat management will be achieved by periodically reviewing various species lists, latest research results, and with a current emphasis on early spring food sources, nesting habitat, and identifying and maintaining invertebrate refugia during the restoration process.

Maintenance of the restorations becomes the responsibility of the landowners after the grant period; Greening requires a statement accepting that responsibility to be signed by the landowners.

Greening will continue to give consideration to CCM for restoration activities, particularly their summer youth crews.

Evaluations will be completed at the site of each restoration activity, upon activity completion and three years after completion. Restorations will be evaluated relative to the stated goals and standards in the restoration plan, current science, and, when applicable, the Board of Water and Soil Resources' native vegetation establishment and enhancement guidelines. Evaluations will determine whether the restorations are meeting planned goals, identify any problems with the implementation of the restorations, and, if necessary, give recommendations on improving restorations. The evaluations will focus on improving future restorations.

Environment and Natural Resources Trust Fund

M.L. 2017 Project Budget



Project Title: Restoring our Metro Lands and Waters: MeCC 10

Legal Citation:

Project Manager: Wiley Buck

Organization: Great River Greening

M.L. 2017 ENRTF Appropriation: \$524,000

Project Length and Completion Date: 3 Years, June 30, 2020

Date of Report: November 4, 2016

ENVIRONMENT AND NATURAL RESOURCES TRUST FUND BUDGET	Activity 1 Budget	Amount Spent	Activity 1 Balance	Activity 2 Budget	Amount Spent	Activity 2 Balance	Activity 3 Budget	Amount Spent	Activity 3 Balance	TOTAL BUDGET	TOTAL BALANCE
BUDGET ITEM	<i>Restore 250 acres of Upland Habitat</i>			<i>Volunteer Restoration Events</i>			<i>Digitized Restoration Monitoring and Advanced Site Steward Program</i>				
Personnel (Wages and Benefits) All FTE totals are for 3 years	\$52,500		\$52,500	\$12,800		\$12,800	\$25,200		\$25,200	\$90,500	\$90,500
Program Manager/Ecologist: Wiley Buck \$16,600 (78% salary, 22% benefits; 0.07 FTE)											
Restoration Ecologists: Julia Bohnen, Todd Rexine, TBD. \$29,700 (83% salary, 17% benefits; 0.18 FTE)											
Director of Conservation: Steve Hockett \$4,000 (estimate 83% salary, 17% benefits; 0.02 FTE)											
Grants Management Assistant: Lisa Strauss \$7,200 (90% salary, 10% benefits; 0.10 FTE)											
Volunteer & Outreach Manager: Katie McCann \$14,100 /\$7,550 (85% salary, 15% benefits; 0.06 FTE)											
Field Coordinator: TBD \$4,000 (85% salary, 15% benefits; 0.02 FTE)											
Field Technicians: Jessie Hendrix, Max Samuelson \$12,150 (92% salary, 8% benefits; 0.04 FTE)											
Director of Finance: William Smith \$5,000 (78% salary, 22% benefits; 0.02 FTE)											
Financial Operations Manager: Julia Wells \$3,100 (84% salary, 16% benefits; 0.02 FTE)											
Communications Manager: Mary Anne Welch \$1,200 (80% salary, 20% benefits; 0.01 FTE)											
Professional/Technical/Service Contracts											
Competitive RFP: site preparation and prairie seeding, invasive species control, woody harvest, thinning, forestry mowing, herbicide treatment prescribed fire, haying; vegetation monitoring; pollinator monitoring.	\$279,700		\$279,700							\$279,700	\$279,700
Equipment/Tools/Supplies											
Seed (\$33,000), plugs and shrubs (\$14,500), trees (825 trees at \$100/tree= \$82,500)	\$78,000		\$78,000	\$54,000		\$54,000				\$132,000	\$132,000
Fencing, erosion control mats, herbicide	\$4,300		\$4,300	\$4,200		\$4,200				\$8,500	\$8,500
Personal protective gear and hand tools for volunteers and technicians; repair and maintenance of mowers, ATV, UTV, and sprayers.	\$530		\$530	\$380		\$380				\$910	\$910
Data plan for data collection on digital devices in the field (1 plan, \$50/mo, 3 yrs)							\$1,800		\$1,800	\$1,800	\$1,800
Travel expenses in Minnesota											
In-state mileage to/from sites, meetings, purchases. 8360 mi @ \$0.54/mi	\$3,240		\$3,240	\$970		\$970	\$1,000		\$1,000	\$5,210	\$5,210
Other											
Volunteer Event Supplies/Rentals: Healthy food/bvg (\$3820); table/chair/potty rentals (\$960); 1 lg tent rental(\$600).				\$5,380		\$5,380				\$5,380	\$5,380
COLUMN TOTAL	\$418,270	\$0	\$418,270	\$77,730	\$0	\$77,730	\$28,000	\$0	\$28,000	\$524,000	\$524,000

**Environment and Natural Resources Trust Fund
M.L 2017 Parcel List**

Project Title: Restoring our Metro Lands and Waters: MeCC 10

Legal Citation:

Project Manager: Wiley Buck

Organization: Great River Greening

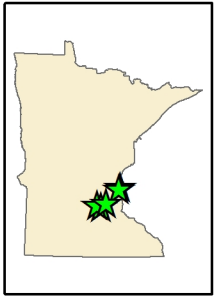
M.L. 2016 ENRTF Appropriation: \$524,000

Project Length and Completion Date: 3 Years, June 30, 2020

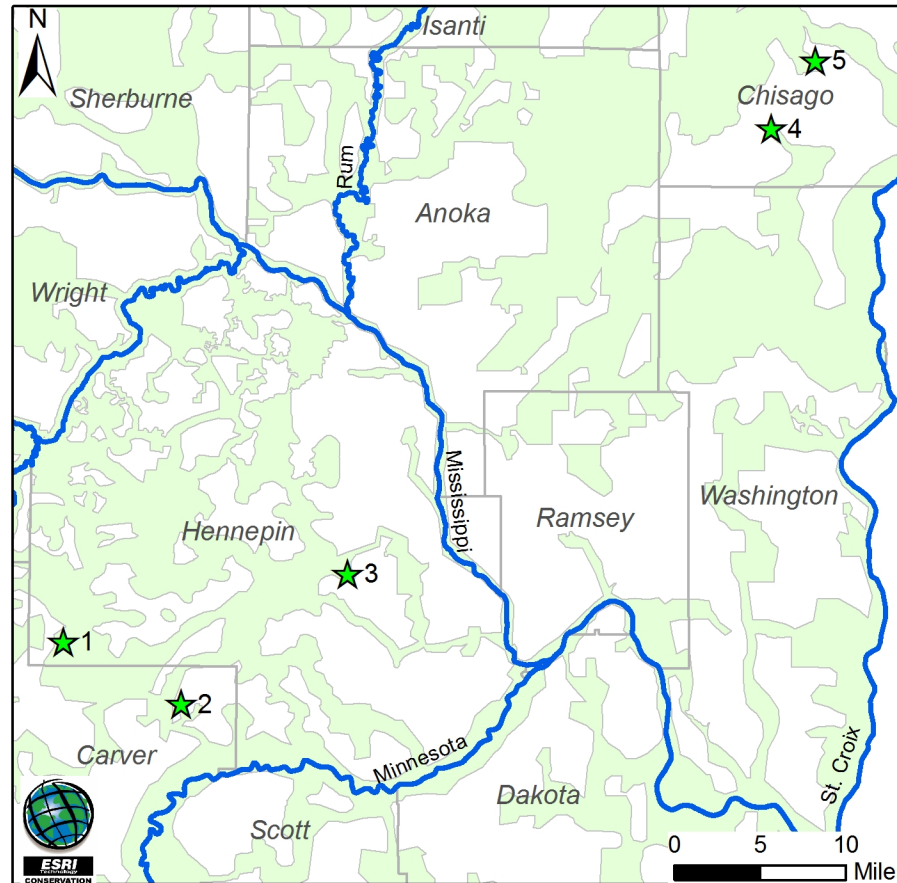
Date of Report: November 4, 2016

#	Acquisition or Restoration Parcel Name	Geographic Coordinates Format: [Deg.]° [Min.]' [Sec.]" [Hemis.]		Estimated Cost	County	Site Significance	Activity Description	# of Acres	# of Shoreline Miles	Type of Landowner	Status
		Latitude	Longitude								
1	Allemansratt Wilderness Park IV	45° 23' 58.72" N	92° 50' 42.408" W	\$160,900	Chisago	High quality maple-oak-basswood forest and wetland mosaic	Forest enhancement; 16 ac of tree planting	52		Public	Phase III Underway
2	Chanhasen Nature Preserve	44° 51' 32.4"	-93° 35' 9.5994"	\$102,900	Carver	Open-grown bur and red oaks in rolling morainal terrain surrounded by wetlands	Oak savanna restoration including intensive tree and shrub removal; restoration of herbaceous layer	16		Public	In development
3	Ojiketa Regional Park	45° 20' 35.52" N	-92° 53' 4.55" W	\$43,000	Chisago	High quality terrace forest	Forest restoration with low density invasive removal; thinning	73		Public	In development
4	Six Mile Marsh	44° 54' 38.88"	-93° 43' 33.96"	\$111,900	Hennepin	Restored prairie in Six Mile Creek corridor, upstream of Lake Minnetonka, innovative maintenance and enhancement of restored prairie using haying	Conservation haying of previously restored prairie in maintenance stage; monitor nitrogen, vegetation, and pollinators.	115		Public	In development
5	Westwood Hills Nature Center III	44° 58' 15.972" N	93° 23' 15.15" W	\$77,700	Hennepin	Mosaic of maple-basswood forest, oak woodland, oak savanna, and prairie	Oak Savanna/Prairie transition restoration incl. woody invasive removal; thinning; seeding and planting	15.5		Public	Phase I and II Underway

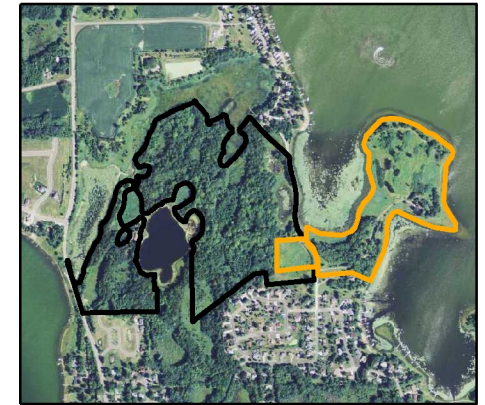
Restoring our Metro Lands and Waters: MeCC 10 Project Locations



- MeCCX 10 Proposed Projects
- Metro Conservation Corridors
- Rivers
- County boundaries



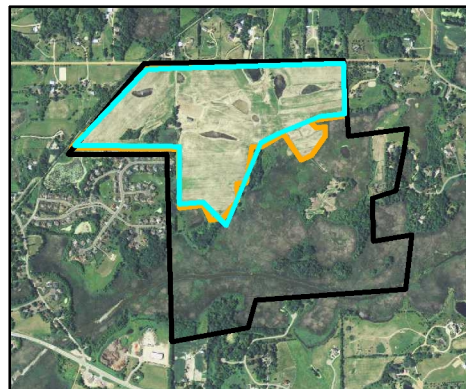
5. Allemansratt Park
(Lindstrom, 50 ac forest)



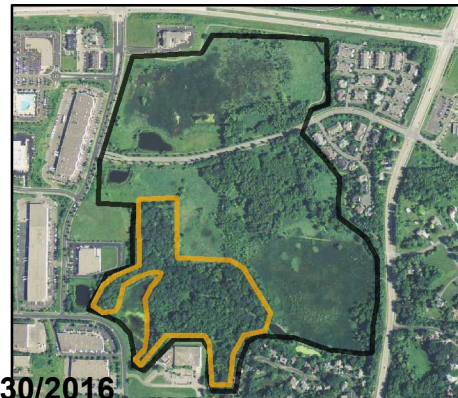
4. Ojiketa Regional Park
(Chisago, 73 ac forest)



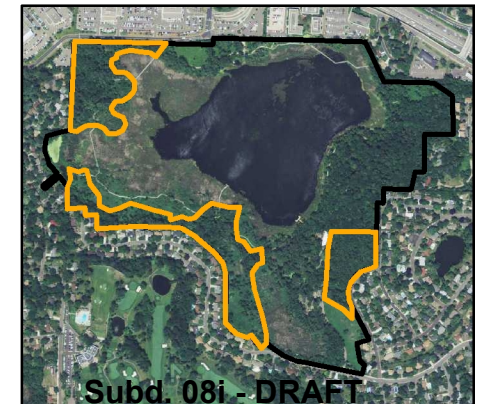
1. Six Mile Marsh
(St. Bonifacious, 30 ac prairie)



2. Chanhassen Nature Preserve
(18 ac oak savanna)



3. Westwood Hills Nature Center
(St. Louis Park, 15 ac savanna)



- Project Boundary
- Site Boundary



