



Environment and Natural Resources Trust Fund (ENRTF) M.L. 2016 Work Plan

Date of Report: **January 28, 2015**
Date of Next Status Update Report: November 1, 2016
Date of Work Plan Approval:
Project Completion Date: June 30, 2019
Does this submission include an amendment request?

PROJECT TITLE: Scientific and Natural Area Acquisition and Restoration

Project Manager: Margaret (Peggy) Booth
Organization: Minnesota Department of Natural Resources, Division of Ecological & Water Resources
Mailing Address: 500 Lafayette Road, Box 25
City/State/Zip Code: St Paul, MN 55155-4025
Telephone Number: (651)259-5088
Email Address: peggy.booth@state.mn.us
Web Address: mndnr.gov/snas

Location: statewide

Total ENRTF Project Budget:	ENRTF Appropriation:	\$4,000,000
	Amount Spent:	\$0
	Balance:	\$4,000,000

Legal Citation: M.L. 2016, Chp. xx, Sec. xx, Subd. xx

Appropriation Language:

I. PROJECT TITLE: Scientific and Natural Area Acquisition and Restoration

II. PROJECT STATEMENT:

Priority sites of biodiversity significance identified by the Minnesota Biological Survey (MBS) and based on the updated *SNA Strategic Land Protection Plan* will be permanently protected as state Scientific and Natural Areas (SNAs) and their habitat quality improved by a suite of tools through the DNR SNA Program. About 400 acres of at risk, high quality native plant communities and wildlife habitat of state significance would be acquired and designated as SNAs. Native habitat restoration, including habitat-focused site improvement activities, would be implemented on about 750 acres of SNAs threatened by human impacts, invasives, and lack of natural disturbance regimes.

III. OVERALL PROJECT STATUS UPDATES:

Project Status as of November 1, 2016:

Project Status as of April 1, 2017:

Project Status as of November 1, 2017:

Project Status as of April 1, 2018:

Project Status as of November 1, 2018:

Project Status as of April 1, 2019 (if needed):

Overall Project Outcomes and Results:

IV. PROJECT ACTIVITIES AND OUTCOMES:

ACTIVITY 1: Protection of Sites of Biodiversity Significance

Description:

The SNA Program will protect and buffer MBS-recommended sites of biodiversity significance by acquisition and SNA designation of ~400 acres. Proactive landowner contacts will be targeted at 10 high priority Conservation Opportunity Areas identified in the *SNA Strategic Land Protection Plan* (initiated through the ENRTF ML2011 appropriation), including prairie core areas in the *Minnesota Prairie Conservation Plan*, in order to cultivate landowner interest in SNA acquisition and designation. The attached ML 2016 Parcel List and ML16 SNA Acquisition and Restoration Projects map set identify priority project areas for this appropriation. The DNR may request to add other highly rated sites to the list with additional MBS recommendations and changes in landowner interest, acquisition opportunity, or threats. Current acquisitions are all proposed to be in fee title, but if more appropriate for ongoing management and use, acquisition may be of a SNA-administered conservation easement with SNA designation.

To be acquired and designated as SNA, the site must be recommended for SNA designation in an Ecological Evaluation report which serves as the site’s baseline assessment for fee acquisitions. All such sites are predominantly MBS-mapped native plant communities and contain habitat for rare species and Species of Greatest Conservation Need. In addition, SNA staff use the “*SNA Candidate Site Evaluation Guide*” (initially developed through the ENRTF-funded SNA strategic planning process) which incorporates criteria to rate which sites are currently pursued. Criteria include diversity and quality of the native habitat, occurrence of rare species, occurrence of native plant communities under-represented in SNA system, parcel size, location of parcel

in relation to biodiversity hotspots (particularly MBS-mapped areas of outstanding and high biodiversity significance) and other conservation lands (including *SNA Strategic Land Protection Plan's* Conservation Opportunity Areas and *Minnesota Prairie Conservation Plan's* Core Areas), potential for long-term management, and additional factors (e.g. landowner readiness, urgency, and willingness to donate; degree of threat, and partnership opportunities),

Acquisition prioritization will include updating the *SNA Strategic Land Protection Plan* (initiated through the ML2011 ENRTF appropriation) by incorporating new MBS and other resource data into the GIS-based decision support tool software. This will improve and refine where proactive landowner contacts are targeted and prioritization of individual parcels for acquisition.

Summary Budget Information for Activity 1:

ENRTF Budget: \$ 2,613,979
Amount Spent: \$ 0
Balance: \$ 2,613,979

Outcome	Completion Date
1a. acquisition as SNA of ~400 acres of high quality habitat	6/30/19
1b. proactive landowner contact in 10 priority areas for acquisition	6/30/18
1c. acquisition prioritization – continued refinement of acquisition decision tools/Plan	6/30/18

Note: budget for this Activity includes \$9,379 for direct & necessary services which are prorated across all costs except budgets for landowner payments; no direct & necessary charges are budgeted for the \$2.32M in landowner payments nor \$125K in transaction costs; actual charges will be based on actual expenditures.

Activity Status as of November 1, 2016:

Activity Status as of April 1, 2017:

Activity Status as of November 1, 2017:

Activity Status as of April 1, 2018:

Activity Status as of November 1, 2018:

Activity Status as of April 1, 2019 (if needed):

Final Report Summary:

ACTIVITY 2: Native Habitat Restoration & Improvements

Description:

Native habitat restoration, including habitat-focused site improvement activities, will be completed on about 750 acres at ~40 state designated SNAs. For purposes of this appropriation, restoration includes the full suite of ecological management tools needed to restore sites and sustain or improve their ecology. The tools include baseline inventory and monitoring of ecological conditions to guide management practices, adaptive management plans, plant community reconstruction and rehabilitation, woody encroachment and invasive species control, prescribed burning and other prescribed site disturbance, and additional post-management monitoring in order to refine further management practices.

Site development improvements will be completed as part of restoration projects (such as protective fencing) and as needed in order for sites newly acquired with ENRTF to meet minimal standards. Interpretive signs-kiosks will be developed and installed at ~8 SNAs acquired or restored with this or recent ENRTF appropriations.

These interpretive signs communicate the significance of the ENRTF-supported acquisition and the role of ENRTF-supported restoration in sustaining or improving habitat quality. SNA staff will provide ecological and technical guidance and on-site verification for ~9 restoration-related projects implemented on SNAs by partner organizations.

Adaptive Management Plans will be completed for ~12 SNAs (including sites acquired through these funds as timing permits); these plans will serve as ecological restoration and management plans as described below. Restoration projects will be based upon ecological restoration and management plans and/or project plans with goals for reconstructing plant communities that are native to the site that are based upon soils, topography, geology, and other factors necessary to sustain the plant community. Each plan includes an implementation timetable which summarizes ongoing management needs. Long-term management costs (e.g. invasive species treatments, prescribed fire, and monitoring/evaluation) will be covered by a combination funding sources, including, but not limited to, ENRTF, Outdoor Heritage Fund (OHF), federal grants, and other funds as appropriated. Restoration projects will be evaluated in terms of project goals and to ascertain how well the native plants have been established and non-natives controlled.

Ecological features and restoration/management practices at ~22 SNAs will be monitored to establish baseline conditions and/or identify adaptive management process improvements needed to achieve better habitat for rare species and Species of Greatest Conservation Need (SGCN). The Adaptive Management Spatial Database (AMSD) was initially developed with ENRTF support in order to accurately map and document implementation of restoration and enhancement projects done at SNAs and linking these accomplishments to specific project funding. Through this appropriation, improvements will be made to the database to add or link restoration/management plans, ecological monitoring data, and other Natural Heritage Information System (e.g. MBS data) to the database. Through this, restoration activities will be more accurately and fully informed and improved by the best available science.

Practices to be done under Activity 2 of this appropriation will be carried out by DNR staff-SNA crews, Conservation Corps Minnesota (CCM), Sentence to Service (STS), volunteers, and/or contractors. Practices may include seed collection, site preparation, planting and establishment period care; invasive species control, woody encroachment removal; prescribed burns (or alternative prescribed disturbance for ecological management purposes, such prescribed haying, mowing, browsing, or grazing, necessary for sites or conditions where use of fire is limited); site development for recent ENRTF acquisitions and/or restoration-related work: site clean-up, sign and interpretive kiosks installation, fencing (removal or installation), unpaved parking areas and visitor access-safety improvements (and associated measures to protect native habitat); management plan preparation; baseline ecological feature assessments and ecological monitoring; and technical/ecological oversight and field verification of restoration-related projects implemented by partners.

All restoration will use seeds/plants of a local ecotype, collected from onsite or within 25 miles. Restoration and improvements of degraded and rare land features (particularly native prairie, savanna, and forest) help implement the SWAP and achieve Habitat Recommendation 5 of the SCPP. This activity and its funding will include site development work needed to bring up to the Department's minimum standards those SNA parcels acquired through this funding and will include those restoration and improvements of newly acquired sites when that work is ecologically advisable and feasible within the appropriation period. The attached ML 2016 Parcel List and ML16 SNA Acquisition and Restoration Projects map set identify priority sites for SNA plant community reconstruction and rehabilitation for this appropriation. Reconstruction is when a plant community which would be native to the site is planted on bare ground (e.g. former agricultural field or removed conifer plantation). Rehabilitation is the interseeding of a degraded plant community; this may follow a woody removal or invasive species control project.

Summary Budget Information for Activity 2:

ENRTF Budget: \$ 1,386,021
Amount Spent: \$ 0

Outcome	Completion Date
2a. ~34 acres of reconstruction or rehabilitation of forest & prairie sites	6/30/19
2b. ~260 acres of woody removal & exotics species treatment	6/30/19
2c. ~480 acres of prescribed burns or other prescribed disturbance	6/30/19
2d. acquisition & restoration-related site development work on ~15 sites & ~8 SNA interpretive kiosks installed	6/30/19
2e. ecological/technical guidance for ~10 partnership restoration-related projects	6/30/18
2f. restoration/management plans completed for ~12 SNAs	6/30/18
2g. ecological/adaptive management monitoring on ~22 SNA sites	6/30/19

Note: total budget for this Activity includes \$74,763 for direct & necessary services which are prorated across all costs except budgets for CCM contracts and MNIT service level agreement (SLAs); no direct & necessary charges are budgeted for the estimated \$88K in CCM contracts and \$25K in MNIT SLAs; actual charges will be based on actual expenditures.

Activity Status as of November 1, 2016:

Activity Status as of April 1, 2017:

Activity Status as of November 1, 2017:

Activity Status as of April 1, 2018:

Activity Status as of November 1, 2018:

Activity Status as of April 1, 2019 (if needed):

Final Report Summary:

V. DISSEMINATION:

Description:

Dissemination will primarily be achieved through the SNA webpage on the DNR website: mndnr.gov/snas, through the SNA Facebook page, and through *Nature Notes* – the SNA Program e-newsletter distributed through GovDelivery.com to over 3800 subscribers and possibly through Tweets on the DNR Twitter site. Specifically, the DNR website will be updated with information on the new or expanded SNAs. Announcements of the acquisitions and some restoration-related activities will be posted on the SNA Facebook page.

Status as of November 1, 2016:

Status as of April 1, 2017:

Status as of November 1, 2017:

Status as of April 1, 2018:

Status as of November 1, 2018:

Status as of April 1, 2019 (if needed):

Final Report Summary:

VI. PROJECT BUDGET SUMMARY:

A. ENRTF Budget Overview:

Budget Category	\$ Amount	Overview Explanation
Personnel:	\$ 897,400	Coordinators & Planner (0.8 FTE for 2 yrs); spec's, tech's & naturalists (4.2 FTE for 2 yrs); laborers & seasonal field crews (2.4 FTE for 2 yrs)
Professional/Technical/Service Contracts:	\$ 281,100	Contractors will be selected following state procurement & bidding processes: <u>Professional/Technical Contracts</u> – interpretive kiosks research & design; mgmt. plans; adaptive mgmt. monitoring; <u>Service Contracts</u> (including Conservation Corps Minnesota) - woody encroachment removal & invasives control; prescribed burning, haying, mowing, browsing, & grazing; site development (fences, signs, etc)
Contract	\$ 25,000	IT Services (Mn.IT service agreements) <u>Adaptive Management Spatial Database</u> upgrades to integrate restoration planning/ecological data, implementation & monitoring
Equipment/Tools/Supplies:	\$ 89,008	parts, tools, repair costs & supplies for restoration, invasives control, prescribed burning, haying, mowing or grazing, management plans, & monitoring; interpretive displays, signs & posts, fencing, & other site development tools & supplies
Fee Title Acquisition:	\$ 2,320,000	~400 acres in 4-8 parcels to be designated as SNA & owned in fee by DNR
Professional Services for Fee Title and Easement Acquisition:	\$ 125,000	Includes real estate transaction costs & LAM billings; appraisal & review; property survey; attorney general; closing costs; recording fees & deed tax; designation in State Register; etc. <\$20K/parcel
Printing:	\$ 5,000	printing of interpretive sign panels
Travel Expenses in MN:	\$ 173,350	Fleet charges for trucks, cars, & equipment (e.g. mowers, seeders), mileage, lodging & meals as per state contracts. The fleet charges are use charges (by mile traveled or monthly charge which we pro-rate) for the specific equipment utilized for this project.
Other:	\$ 84,142	Direct & Necessary Services for the appropriation
TOTAL ENRTF BUDGET:	\$ 4,000,000	

Explanation of Use of Classified Staff: Consistent with approved work plans for previous ENRTF appropriations for the SNA Program, this funding will be used to pay project-associated costs for classified and unclassified staff paid mostly with special project funds. These positions would not exist, but for special project funding received

through the ENRTF and other funds. Each year these positions are assigned work based on the particular combination of soft funding available to address priority SNA Program activities.

Direct and Necessary expenses include both Department Support Services (Human Resources, IT Support, Safety, Financial Support, Communications Support, Planning Support, and Procurement Support) and Division Support Services. Department Support Services are described in the agency Service Level Agreement, and billed internally to divisions based on rates that have been developed for each area of service. These services are directly related to and necessary for the appropriation. Department leadership services (Commissioner’s Office and Regional Directors) are not assessed. Division Support Services include costs associated with Division business offices and clerical support. Those elements of individual projects that put little or no demand on support services such as large single-source contracts, land acquisitions, and funds that are passed-thru to other entities are not assessed Direct and Necessary costs for those activities. For this work plan, landowner payments (~\$2,300,000), acquisition professional services (\$120,000) CCM contracts (~\$88,000), and MnIT service level agreement (~\$25,000) have not been assessed Direct and Necessary costs. In addition to itemized costs captured in our proposal budget, direct and necessary costs cover HR Support (\$21,243), Safety Support (\$5,008), Financial Support (\$19,010), Communication Support (\$6,180), IT Support (\$27,381), Planning Support (\$4,145), and Procurement Support (\$1,175) that are necessary to accomplishing funded programs/projects.

Explanation of Capital Expenditures Greater Than \$5,000: NA

Number of Full-time Equivalent (FTE) Directly Funded with this ENRTF Appropriation: 7.4 FTE each for two years spread over 25-35 positions – for a total of 14.8 FTEs

Number of Full-time Equivalent (FTE) Estimated to Be Funded through Contracts with this ENRTF Appropriation: up to 0.4 FTE for 1 year for professional technical contract; & up to 2 FTE for 1 year for CCM & fieldwork contractors – for a total of 2.4 FTEs

B. Other Funds:

Source of Funds	\$ Amount Proposed	\$ Amount Spent	Use of Other Funds
Non-state	\$0	\$0	We seek landowner and partner donations for acquisitions. If any other funds are used for landowner payments for acquisitions funded in part with this appropriation, accomplishments will be pro-rated by the actual expenditures per funding source.
State**	\$300,000**	\$0**	Some SNA acquisitions are funded with a combination of state appropriations (e.g. OHF and RIM). If any other funds are used for landowner payments for acquisitions funded in part with this appropriation, accomplishments will be pro-rated by the actual expenditures per funding source. In-kind contributions by the project manager to administer this project will not be tracked.
TOTAL OTHER FUNDS:	\$300,000	\$0	

** As indicated below, Outdoor Heritage Fund appropriations for acquisition and prairie restoration and enhancement occur concurrently with this ENRTF appropriation. These OHF funds are used for similar but separate projects as the ENRTF funding. Because of the multiple, overlapping appropriations, it would not be

accurate to list those as match here. Also, the SNA program typically annually receives an internal general fund grant for about \$30,000 for similar but separate invasive species projects.

VII. PROJECT STRATEGY:

A. Project Partners:

This proposal includes the DNR’s work and funding to be used by the SNA Program towards restoration-related partnership project work on SNAs. Partners include entities, such as The Nature Conservancy, Friends of the Mississippi River, Great River Greening, Sugarloaf Northshore Stewardship Association, local units of governments, and other non-profits.

B. Project Impact and Long-term Strategy:

The *SNA Strategic Land Protection Plan*’s primary goal is “the state’s natural heritage is not lost from any ecological region of Minnesota” with 6 objectives: 1) 5 occurrences of each existing native plant community are within designated SNAs within each ecological subsection; 2) 3 occurrences of each existing species of plant and animal are within designated SNAs within each ecological subsection; 3) 1 of each type of geological feature in the state is within a designated SNA; 4) 10% of the state’s high priority conservation areas are protected through SNAs; other landowners and managers conserve the natural heritage within high priority conservation areas; 5) SNAs contribute ecological values in key watersheds; and 6) the SNAs’ natural features and public benefit are sustained over time. If 10% of the high priority areas identified in the Plan became SNAs, the state would protect approximately 300 SNAs by the end of the 21st century. This totals about 325,000 acres or 0.6 % of the state, and means designating 136,000 more acres of SNA over the next 85 years. In addition, the SNA Program is dependent on grant funds (predominantly ENRTF) for the SNA outreach initiative and many SNA restoration and improvement projects. Thus, the DNR could utilize support from the Environment and Natural Resources Trust fund of \$10M to \$20M per biennium over the next 20 years.

C. Funding History:

Funding Source and Use of Funds	Funding Timeframe	\$ Amount
ENRTF ML11, 1SS, Ch2, Art3, Sec2, Subd 4e: SNA acquisition, restoration, enhancement & public engagement	July 2011-June 2014	\$ 1,640,000
ENRTF ML13, Ch 52, Sec 2, Subd 4b: SNA acquisition, restoration, enhancement & public	July 2013-June 2016	\$ 1,500,000
ENRTF ML14, Ch226, Subd 7a: SNA acquisition, restoration, enhancement & public engagement	July 2014-June 2017	\$ 2,540,000
ENRTF ML15, Ch76, Sec 2, Subd 9c: SNA acquisition, restoration, enhancement & public engagement	July 2015-June 2018	\$ 4,000,000
OHF ML11, 1SS, Ch6, Art1, Sec2, Subd 4b: Accelerated Prairie – SNA prairie restoration & enhancement (estimated SNA portion only)	July 2011-June 2016	\$ 229,370
OHF ML11, 1SS, Ch6, Art1, Sec2, Subd 4a: SNA & NPB acquisition (estimated SNA portion only)	July 2011-June 2016+	\$ 702,100
OHF ML12, Ch262, Art1, Sec2, Subd 4h: Accelerated Prairie – SNA prairie restoration & enhancement (estimated SNA portion only)	July 2012-June 2017	\$ 276,940
OHF ML13, Ch137, Art1, Sec2, Subd 4g: Accelerated Prairie – SNA prairie restoration & enhancement (estimated SNA portion only)	July 2013-June 2018	\$ 144,170
OHF ML13, Ch137, Art1, Sec2, Subd 4c: SNA & NPB acquisition (estimated SNA portion only)	July 2013-June 2018+	\$ 246,500
OHF ML14, Ch256, Art1, Sec2, Subd 4h: Accelerated Prairie – SNA prairie restoration & enhancement (estimated SNA portion only)	July 2014-June 2019	\$ 285,650

OHF ML14, Ch256, Art1, Sec2, Subd 4a: SNA acquisition	July 2014-June 2019+	\$ 1,070,000
OHF ML15, 1SS, Ch1, Art1, Sec2, Subd 2a: SNA acquisition	July 2015-June 2020+	\$ 1,000,000
OHF ML15, 1SS, Ch1, Art1, Sec2, Subd 2k: Accelerated Prairie – SNA prairie restoration & enhancement (estimated SNA portion only)	July 2015-June 2020	\$ 762,000
State Wildlife Grant (federal) – SNA management plans	March 2012-August 2013	\$ 49,800

VIII. FEE TITLE ACQUISITION/CONSERVATION EASEMENT/RESTORATION REQUIREMENTS:

A. Parcel List: See attached list.

B. Acquisition/Restoration Information:

Fee Title Acquisition

1. Describe the selection process for identifying and including proposed parcels on the parcel list, including explanation of the criteria and decision-making process used to rank and prioritize parcels.

To be acquired and designated as SNA, the site must be recommended for SNA designation in an Ecological Evaluation report which serves as the site’s baseline assessment for fee acquisitions. All such sites are predominantly MBS-mapped native plant communities and contain habitat for rare species and Species of Greatest Conservation Need. In addition, SNA staff use the “*SNA Candidate Site Evaluation Guide*” (initially developed through the ENRTF-funded SNA strategic planning process) which incorporates criteria to rate which sites are currently pursued. Criteria include diversity and quality of the native habitat, occurrence of rare species, occurrence of native plant communities under-represented in SNA system, parcel size, location of parcel in relation to biodiversity hotspots (particularly MBS-mapped areas of outstanding and high biodiversity significance) and other conservation lands (including *SNA Strategic Land Protection Plan’s* Conservation Opportunity Areas and *Minnesota Prairie Conservation Plan’s* Core Areas), potential for long-term management, and additional factors (e.g. landowner readiness, urgency, and willingness to donate; degree of threat, and partnership opportunities).

2. List all adopted state, regional, or local natural resource plans in which the lands included in the parcel list are identified. Include a link to the plan if one is available.

- *SNA Strategic Land Protection Plan* – www.dnr.state.mn.us/eco/sna/plan
- *Minnesota’s State Wildlife Action Plan* – www.dnr.state.mn.us/cwcs
- *Minnesota Prairie Conservation Plan* – www.dnr.state.mn.us/prairieplan

3. For any parcels acquired in fee title, a restoration and management must be prepared. Summarize the components and expected outcomes of restoration and management plans for parcels acquired by your organization, how these plans are kept on file by your organization, and overall strategies for long-term plan implementation, including how long-term maintenance and management needs of the parcel will be financed into the future.

Each parcel acquired as a new SNA in fee will have an Adaptive Management Plan (AMP) or if as an addition to an existing SNA, that SNAs Management Plan may be amended to add the new parcel. The AMPs include goals, ecological description, priority features with indicators, and management recommendations. The intended outcome of management of SNAs is that 1) all the lands be native plant communities or restored to plant communities that would have been native to the site, 2) these plant communities are sustained over time, and 3) that visitors are accommodated safely (unless visitor access is restricted by designation order). The goals for the SNA’s management are based upon soils, topography, geology, and other factors necessary to sustain the plant community. Each plan includes an implementation timetable which summarizes ongoing management needs and a statement on funding. Long-term management costs (e.g. invasive species treatments, prescribed fire, and monitoring/evaluation) will be covered by a combination funding sources, including, but not limited to, ENRTF, Outdoor Heritage Fund (OHF), federal grants, and

other funds as appropriated. Each AMP is kept in a DNR internal shared electronic filing system accessible to all SNA staff.

4. For each parcel to be conveyed to a State of Minnesota entity (e.g., DNR) after purchase, provide a statement confirming that county board approval will be obtained.

The DNR follows Minnesota Statutes 84.033 which require that any land acquired for designation as a SNA must have county board approval as prescribed under MS 97A.145.

5. If applicable (see M.S. 116P.17), provide a statement confirming that written approval from the DNR Commissioner will be obtained 10 business days prior to any final acquisition transaction.

As part of the DNR acquisition process, all SNA acquisitions are required to have approval of the Ecological and Water Resources Division Director and land conveyances are accepted by the Director or Deputy Director of Division of Lands and Minerals who have delegated authority to approve this for the Commissioner.

Restoration

1. Provide a statement confirming that all restoration activities completed with these funds will occur on land permanently protected by a conservation easement or public ownership.

All restoration-related activities done with this appropriation are on lands designated as SNA which the state owns in fee or easement.

2. Summarize the components and expected outcomes of restoration and management plans for the parcels to be restored by your organization, how these plans are kept on file by your organization, and overall strategies for long-term plan implementation.

Each restoration project will be based upon an ecological restoration and management plan and/or project plan with goals for reconstructing plant communities that are native to the site that are based upon soils, topography, geology, and other factors necessary to sustain the plant community. Each plan includes an implementation timetable which summarizes ongoing management needs. Each restoration and management plan and project plan is kept in a DNR internal shared electronic filing system accessible to all SNA staff.

3. Describe how restoration efforts will utilize and follow the Board of Soil and Water Resources “Native Vegetation Establishment and Enhancement Guidelines” in order to ensure ecological integrity and pollinator enhancement.

The SNA Program follows or exceeds the recommendations found in the BWSR “Native Vegetation Establishment and Enhancement Guidelines”. SNA restorations typically follow the current BOWSR Guidelines, including Project Guidance, Plant Community Restoration, Temporary Cover and Forest/Woodlands. The SNA Program follows the general direction of the BWSR Guidelines for “Recommended Steps for Obtaining Plant Materials”, and has additional and more restrictive requirements for restoration material sources. Specifically, restoration and management of DNR lands are governed by DNR Operational Order #124 on “Plant Material Standards for Native Plant Community Restoration” and #130 on “Pollinator Habitat” (which include BMPs).

4. Describe how the long-term maintenance and management needs of the parcel being restored with these funds will be met and financed into the future.

Long-term management costs (e.g. invasive species treatments, prescribed fire/disturbance, and monitoring/evaluation) will be covered by a combination funding sources, including, but not limited to, ENRTF, Outdoor Heritage Fund (OHF), federal grants, and other funds as appropriated.

5. Describe how consideration will be given to contracting with Conservation Corps of Minnesota for any restoration activities.

DNR has a standing general contract with CMM under which the SNA Program often does project or activity specific agreements. For restoration projects, CCM has been and will continue to be used when appropriate for hand seed harvest. CCM also does some invasives species control on SNAs and will be considered on restoration projects for post-planting weed control.

- 6. Provide a statement indicating that evaluations will be completed on parcels where activities were implemented both 1) initially after activity completion and 2) three years later as a follow-up. Evaluations should analyze improvements to the parcel and whether goals have been met, identify any problems with the implementation, and identify any findings that can be used to improve implementation of future restoration efforts at the site or elsewhere.**

Plant community reconstruction and rehabilitation projects will be evaluated and a report submitted to the LCCMR to ascertain how well the native plants have been established and non-natives controlled. The evaluation reports include a summary of management plan outcomes, activities completed through the project, maps of the project area, a statement of ongoing management needs and funding, and a summary of the evaluation.

IX. VISUAL COMPONENT or MAP(S): See attached ML16 SNA Acquisition and Restoration Projects map set.

X. RESEARCH ADDENDUM: NA

XI. REPORTING REQUIREMENTS:

Periodic work plan status update reports will be submitted not later than November 1, 2016, April 1, 2017, November 1, 2017, April 1, 2018, November 1, 2018, and April 1, 2019. A final report and associated products will be submitted before September 15, 2019 (as necessary for state FY closeout data to be available and summarized).

Environment and Natural Resources Trust Fund

M.L. 2016 Project Budget

Project Title: SNA Acquisition and Restoration

Legal Citation:

Project Manager: Margaret (Peggy) Booth

Organization: MnDNR

M.L. 2015 ENRTF Appropriation: \$4,000,000

Project Length and Completion Date: 3 Years, June 30, 2019

Date of Report: January 28, 2016



ENVIRONMENT AND NATURAL RESOURCES TRUST FUND BUDGET	Activity 1 Budget	Amount Spent	Activity 1 Balance	Activity 2 Budget	Amount Spent	Activity 2 Balance	TOTAL BUDGET	TOTAL BALANCE
BUDGET ITEM	Protection of Sites of Biodiversity		Native Habitat Restoration, Enhancement &					
Personnel (Wages and Benefits)	\$147,800	\$0	\$147,800	\$749,600	\$0	\$749,600	\$897,400	\$897,400
Position Type 1: Coordinators & Planner - Activity 1: ~0.4 FTE acquisition for 2 yrs; Activity 2: ~0.5 FTE resto-related for 2 yrs - all spread over ~5 positions								
Position Type 2: Specialists, Technicians, & Naturalists - Activity 1: ~0.6 FTE acquisition for 2 yrs; Activity 2: ~3.6 FTE resto-related for 2 yrs - all spread over about ~12 positions								
Position Type 3: Laborers & Seasonal Field Crews - all Activity 2: ~2.4 FTE for 2 yrs - spread over ~9-15 positions								
Professional/Technical/Service Contracts		\$0	\$0	\$281,100	\$0	\$281,100	\$281,100	\$281,100
<u>Professional/Technical Contracts</u>								
Act. 2d. ~12 interpretive kiosk panel research & design (~\$7K) - contractors to be selected following state procurement & bidding processes								
Act. 2f. ~8 mgmt. plans (~\$40K) - contractors to be selected following state procurement & bidding processes								
Act. 2g. adaptive mgmt. monitoring at ~5 SNAs (~\$19K);								
<u>Service Contracts</u>								
Act. 2 including 2c. restoration-related activities (~\$27K at ~\$2000-\$5000/ac) - priority given to CCM; contractors to be selected following state procurement & bidding processes								
Act. 2b. woody encroachment removal & invasives control (~\$155K at ~\$1000-\$5000/ac) - priority given to CCM; contractors to be selected following state procurement & bidding processes								
Act 2c. prescribed burning, haying, mowing, browsing or grazing (~\$29.7K at ~\$100-\$700/ac - priority given to CCM; contractors to be selected following state procurement & bidding processes								
Act 2d. site development (fences, signs, etc) (~\$4.1K) - priority given to CCM; contractors to be selected following state procurement & bidding processes								
Contract: IT Services (Mn.IT service agreements) Adaptive Management Spatial Database upgrades to integrate restoration planning/ecological data, implementation & monitoring	\$0	\$0	\$0	\$25,000	\$0	\$25,000	\$25,000	\$25,000
Equipment/Tools/Supplies	\$0	\$0	\$0	\$89,008	\$0	\$89,008	\$89,008	\$89,008
Activity 2: parts, tools, repair costs & supplies for restoration, invasives control, prescribed burning, etc (this is largely for SNA tools, such as chain saws, pump cans, drip torches, fire racks, pulaskis, other handtools, backpack sprayers, portable pumps & hose, personal protective equipment, etc, & supplies such as herbicides, spreading oils, flagging, stakes, etc) (~\$33.6K); signs (entry, boundary & rules signs), posts/hardware, fencing, gravel, & other site development tools & supplies (~\$47.2K); monitoring supplies & materials (~\$8.208K).								
Fee Title Acquisition	\$2,320,000	\$0	\$2,320,000	\$0	\$0	\$0	\$2,320,000	\$2,320,000
~400 acres in 4-8 parcels to be designated as SNA & owned in fee by DNR								
Professional Services for Fee Title Acquisition	\$125,000	\$0	\$125,000	\$0	\$0	\$0	\$125,000	\$125,000
Includes real estate transaction costs & LAM billings; appraisal & review; property survey; attorney general; closing costs; recording fees & deed tax; designation in state register; etc. ~\$20K/parcel								
Printing	\$0	\$0	\$0	\$5,000	\$0	\$5,000	\$5,000	\$5,000
Activity 2: interpretive sign panels.								
Travel expenses in Minnesota	\$11,800	\$0	\$11,800	\$161,550	\$0	\$161,550	\$173,350	\$173,350
Fleet charges for trucks, cars, & equipment (e.g. mowers, seeders), mileage, lodging & meals as per state contracts								
Other	\$9,379	\$0	\$9,379	\$74,763	\$0	\$74,763	\$84,142	\$84,142
DNR's direct and necessary costs (\$84,142 total) pay for activities that are directly related to and necessary for accomplishing appropriated programs/projects. In addition to itemized costs captured in our proposal budget, direct and necessary costs cover People/HR Support (\$21,243), Safety Support (\$5,008), Financial Support (\$19,010), Communication Support (\$6,180), IT Support (\$27,381), Planning Support (\$4,145) and Procurement Support (\$1,175) that are necessary to accomplishing funded programs/projects.								
COLUMN TOTAL	\$2,613,979	\$0	\$2,613,979	\$1,386,021	\$0	\$1,386,021	\$4,000,000	\$4,000,000

Environment and Natural Resources Trust Fund

M.L. 2016 Parcel List

Project Title: Scientific and Natural Area Acquisition and Restoration

Legal Citation: M.L. 2016, Chp. xx, Sec. xx, Subd. xx

Project Manager: Margaret (Peggy) Booth

Organization: Minnesota Department of Natural Resources, Division of Ecological & Water Resources

M.L. 2016 ENRTF Appropriation: \$4,000,000

Project Length and Completion Date: 3 Years, June 30, 2019

Date of Report: January 12, 2016

#	Acquisition or Restoration Parcel Name	Geographic Coordinates Format: [Deg.]° [Min.]' [Sec.]" [Hemis.]		Estimated Cost	Estimated Annual PILT Liabilities	County	Site Significance	Activity Description	# of Acres	# of Shoreline Miles	Type of Landowner	Proposed Fee Title or Easement Holder (if applicable)	Status
		Latitude	Longitude										
1	Blue Devil SNA addition	44° 47' 32.4"	95° 32' 36.7"	\$ 800,000		Yellow Medicine	MBS-mapped prairie/outcrop with rare features	fee title acquisition	200		private ind/trust	DNR-SNA	
2	Cedar Mountain SNA addition	44° 30' 22"	94° 54' 16"	\$ 800,000		Redwood	MBS-mapped prairie/outcrop with rare features	fee title acquisition	200		private ind/trust	DNR-SNA	
3	Chanarambie Creek	43° 54' 22.4"	96° 1' 51.9"	\$ 480,000		Murray	MBS-mapped dry hill prairie & prairie meadow	fee title acquisition	120		private ind/trust	DNR-SNA	
4	Des Moines River SNA addition	43° 44' 38.5"	95° 4' 8.7"	\$ 200,000		Jackson	buffer to SNA to aide in mgmt. of native prairie	fee title acquisition	50		private ind/trust	DNR-SNA	
5	Dinner Creek SNA	47° 4' 21.5"	95° 12' 7.5"	\$ 356,700		Becker	white cedar swamp, aspen-birch-basswood forest, Jack pine woodland, red-white pine woodland	fee title acquisition	242		private	DNR-SNA	
6	Drake Woods	43° 33'54.0"	94° 6' 23.51"	\$ 1,500,000		Fairbault	best intact MBS mapped hardwood forest in south central MN	fee title acquisition	300		private ind/trust	DNR-SNA	
7	Englund Ecotone SNA addition	45° 41' 19.3"	94° 8' 53.2"	\$ 2,148,000		Benton	oak forest, oak savanna, sedge meadow	fee title acquisition	358		private	DNR-SNA	
8	Felton Prairie SNA addition	46° 52' 1.6"	94° 8' 53.2"	\$ 800,000		Clay	wet-mesic or dry prairie	fee title acquisition	200		private	DNR-SNA	
9	Franconia Bluffs SNA addition	45° 22' 4.9"	92° 41' 53.6"	\$ 480,000		Chisago	forested St. Croix bluff; forested valley of designated trout stream Lawrence Creek (both sides of 0.8 mi)	fee title acquisition	80	0.8	private	DNR-SNA	
10	Glacial Ridge	47° 36' 44.7"	96° 22' 25.4"	\$ 450,000		Polk	wet-mesic prairie	fee title acquisition	150		private	DNR-SNA	
11	Gneiss Outcrops SNA addition	44° 46' 52.2"	95° 30' 28.7"	\$ 400,000		Chippewa	MBS-mapped rock outcrop	fee title acquisition	100	0.5	private ind/trust	DNR-SNA	
12	Gully Fen SNA addition	47° 46' 58.7"	95° 38' 0.6"	\$ 754,800		Polk	fen - wetland-Forest	fee title acquisition	1200		private	DNR-SNA	

13	Hastings Sand Coulee SNA addition	44° 41' 41.9"	92° 49' 22.5"	\$ 250,000		Dakota	prairie	fee title acquisition	16		private	DNR-SNA	
14	Iron Springs Bog SNA	47° 15' 38.8"	95° 13' 22.7"	\$ 60,000		Clearwater	rich tamarack swamp, wet meadow carr; Mississippi R frontage	fee title acquisition	63	0.4	private	DNR-SNA	
15	Lake Bronson SNA addition	48° 43' 28.6"	96° 35' 54.5"	\$ 24,000		Kittson	wet-mesic brush prairie; Two Rivers river frontage	fee title acquisition	40	0.3	private	DNR-SNA	
16	Little Kandiyohi-Wakanda Lakes Peninsula Forest	45° 3' 53.2"	94° 58' 46.9"	\$ 1,560,000		Kandiyohi	MBS-mapped forest communities	fee title acquisition	260	7	private ind/trust	DNR-SNA	
17	Mille Lacs Moraine SNA addition	46° 16' 58.3"	93° 51' 10.9"	\$ 713,000		Crow Wing	MBS-mapped forest communities & habitat for rare birds	fee title acquisition	265	0.5	private	DNR-SNA	
18	Myhr Creek Ridge SNA addition	47° 50' 17.8"	90° 0' 29.1"	\$ 160,000		Cook	black spruce jack pine woodland	fee title acquisition	80		private	DNR-SNA	
19	Middle Fork Zumbro River Forest	44° 9' 8.4"	92° 48' 6.3"	\$ 1,000,000		Dodge	sugar maple - basswood-(butternut hickory) forest	fee title acquisition	300	4	private	DNR-SNA	
20	Prairie Coteau SNA addition	44° 7' 14.0"	96° 8' 58.5"	\$ 1,500,000		Pipestone	MBS-mapped dry hill prairie & critical habitat for skippers	fee title acquisition	300		private ind/trust	DNR-SNA	
21	Roscoe Prairie SNA addition	44° 7' 14.0"	94° 40' 37"	\$ 240,000		Stearns	wet prairie with rare butterfly habitat	fee title acquisition	40		private	DNR-SNA	
22	Rose Dell Prairie	45° 25' 12.7"	96° 21' 15.5"	\$ 400,000		Pipestone	MBS-mapped prairie with rare features	fee title acquisition	80		private ind/trust	DNR-SNA	
23	Sandpiper Prairie SNA addition	47° 14' 32.2"	96° 24' 16.3"	\$ 100,000		Norman	wet-mesic prairie	fee title acquisition	100		private	DNR-SNA	
24	Seminary Fen SNA addition	44° 55' 15.4"	93° 18' 27.8"	\$ 120,000		Carver	calcareous fen	fee title acquisition	20		private	DNR-SNA	
25	Spring Hill Fen	45° 33' 16.2"	94° 49' 29.6"	\$ 600,000		Stearns	calcareous fen	fee title acquisition	150		private		
26	Watrous Island	48° 30' 53.8"	93° 45' 55.7"	\$ 120,000		Koochiching	lowland forest; Rainy R	fee title acquisition	45	2.7	private	DNR-SNA	
				\$16,016,500									
27	Blanket Flower Prairie SNA	46° 41' 7.7"	96° 12' 18.1"	\$ 36,000		Clay	reconstruct dry gravel prairie	restore prairie	36		public	DNR-SNA	
28	Cannon River Turtle Preserve SNA	44° 34' 22.1"	92° 40' 42.1"	\$ 60,000		Chisago	reconstruct bedrock bluff prairie	restore prairie	20		public	DNR-SNA	

**DNR Direct & Necessary Cost Calculator
ML16 ENRTF and OHF Proposals - Subtractive Model**

Updated April 1, 2015

Fill in yellow cells to calculate services your program needs. All other cells are formulaic and locked.

Division: EWR

Project Title: **SNA Acquisition** and Restoration

Funding Request (including D&N)	Fee Title or Easement Acquisition	Pass-through Grants	Single-source Contract		Metric	Metric Value	Number of Units	Total D&N
\$ 4,000,000	\$ 2,320,000	\$ -	\$ 238,000					
				People Support	FTE	\$ 1,455	14.8	\$ 21,534
				Safety Support	FTE	\$ 343	14.8	\$ 5,076
				Financial Support	All Other Costs	\$ 0.014	\$1,356,952	\$ 18,997
				Communication Support	Allotments	\$ 1,236	5	\$ 6,180
				IT Support	IT User ID	\$ 2,794	10	\$ 27,940
				Planning Support	Allotments	\$ 829	5	\$ 4,145
				Procurement Support	Allotments	\$ 235	5	\$ 1,175
				Division Direct (project)	Cost/dollar (.0200)			\$ -
				Division Direct (program)	Cost/dollar (.0584)			\$ -
						Total Direct & Necessary:		\$ 85,048
						Project Costs before Direct and Necessary:		\$ 3,914,952
						Total Project Costs:		\$ 4,000,000

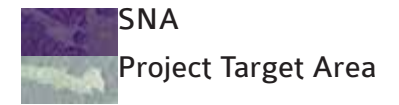
Personnel Necessary to Support Proposal						
Position Title	FTE's Funded	Years Funded	User ID's Required	Years Funded	FTE-Year Units	User ID Units
coordinators & pl	0.8	2	0.8	2	1.6	1.6
specs, techs & na	4.2	2	4.2	2	8.4	8.4
seasonal crews	2.4	2	0	0	4.8	0
					0	0
					0	0
					0	0
					0	0
SUM:					14.8	10

Number of Allotments Required **5**

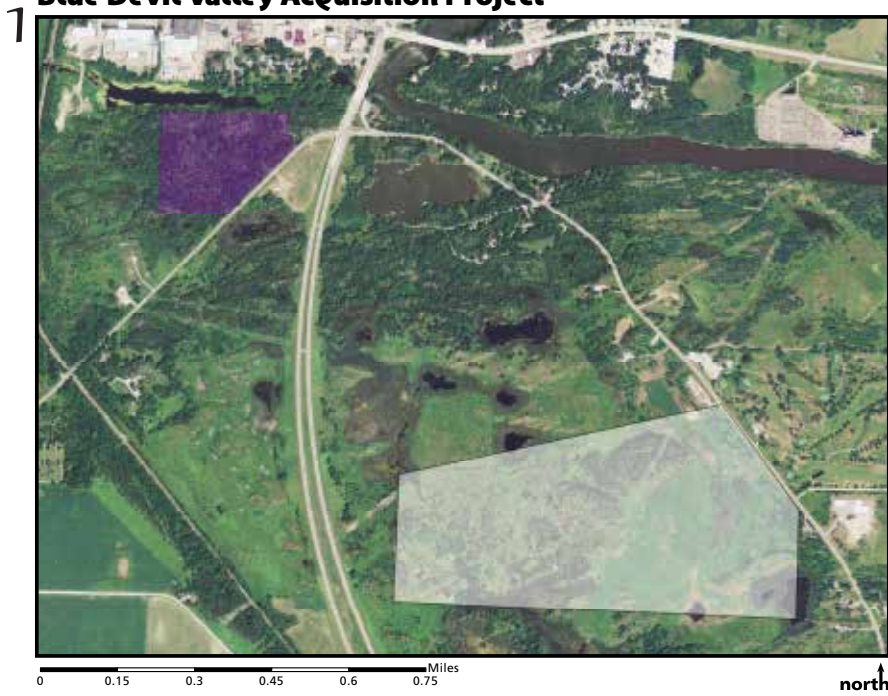
Notes on calculations

- People Support: FY15 HR Budget/2013-14 March/March FTE
- Safety Support: FY15 Safety Budget/2013-14 March/March FTE
- Financial Support: Source: FY15 OMBS Budget/FY14 Appropriations & Dedicated Revenue Budget
- Communication Support: FY15 OCO Budget/2014 Allotments
- Computer Support: FY15 MN.IT Services @ DNR SLA Budget (Governance Subtotal + IT Server Initiative/2013-14 March/March FTE)
- Planning Services: FY15 Planning Budget/2014 Allotments
- Procurement Support: FY15 Procurement Budget/2014 Allotments
- Division Support: Cost/dollar (from D&N Cost Analysis)

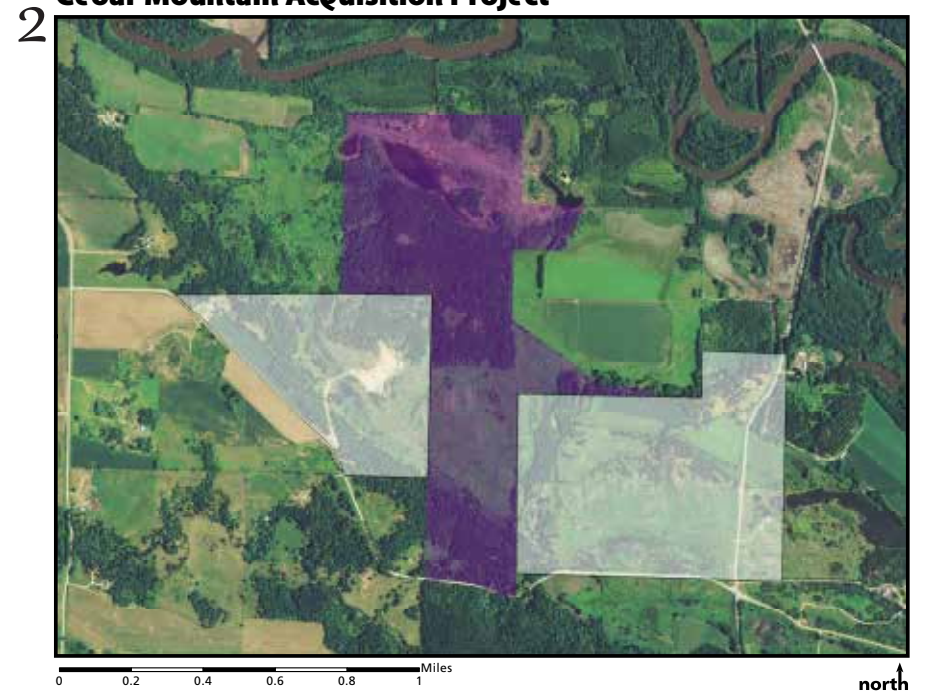
ML16 SNA Acquisition and Restoration Projects



1 Blue Devil Valley Acquisition Project



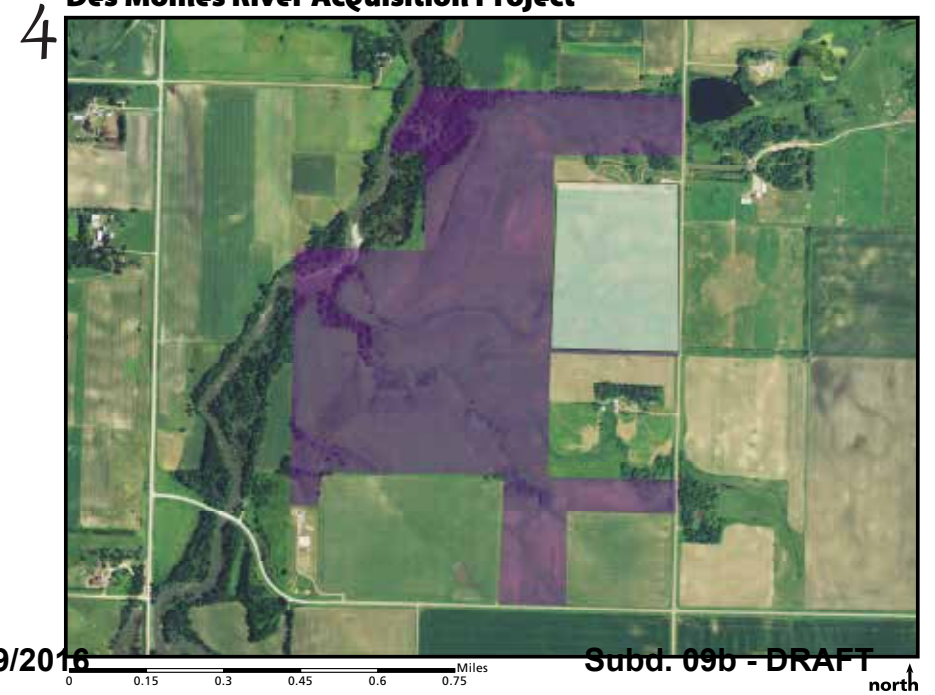
2 Cedar Mountain Acquisition Project



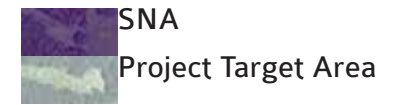
3 Chanarambie Creek Prairie Acquisition Project



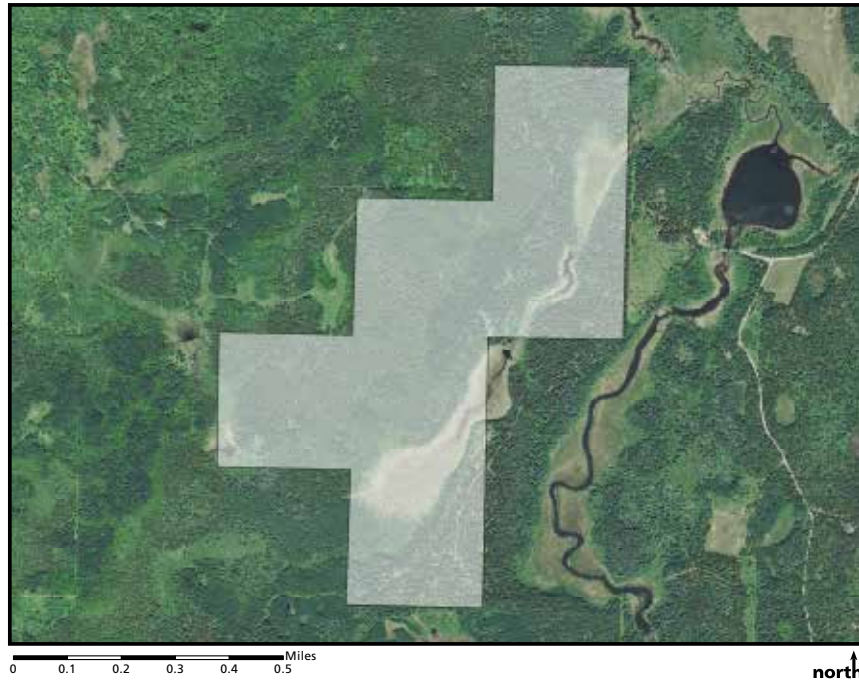
4 Des Moines River Acquisition Project



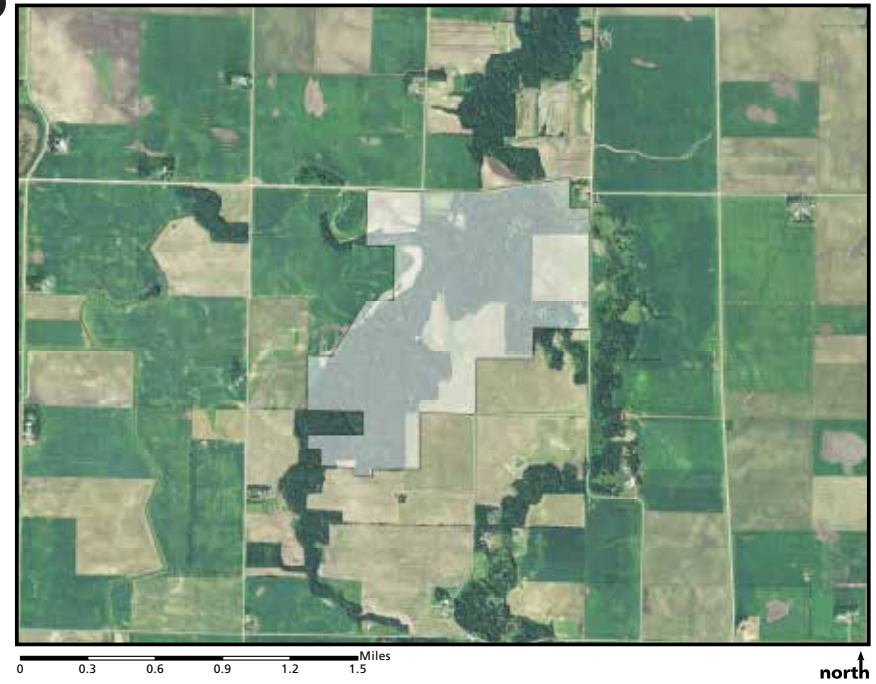
ML16 SNA Acquisition and Restoration Projects



5 **Dinner Creek Acquisition Project**



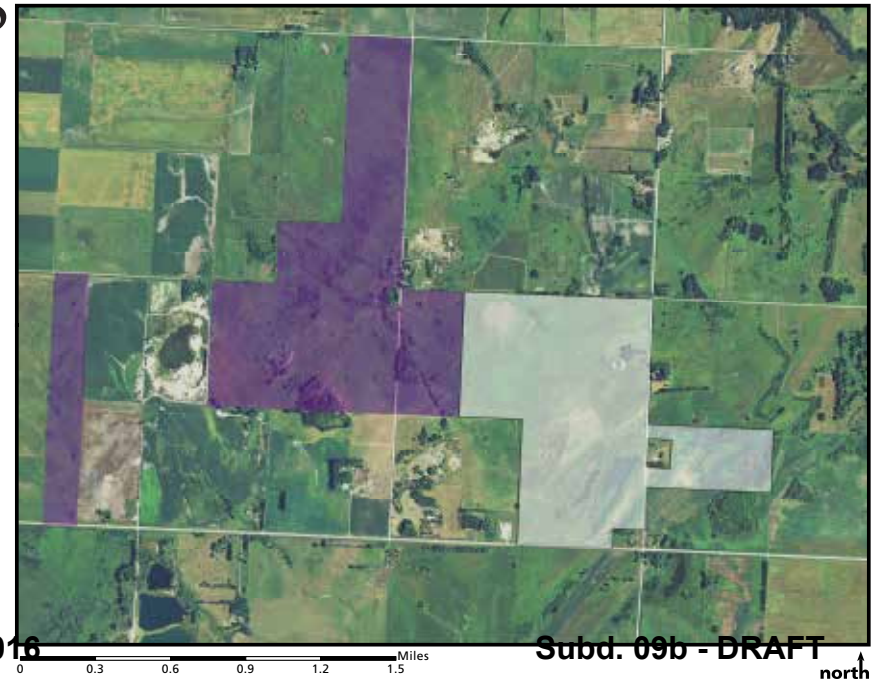
6 **Drake Woods Acquisition Project**



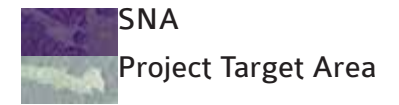
7 **Englund Ecotone Acquisition Project**



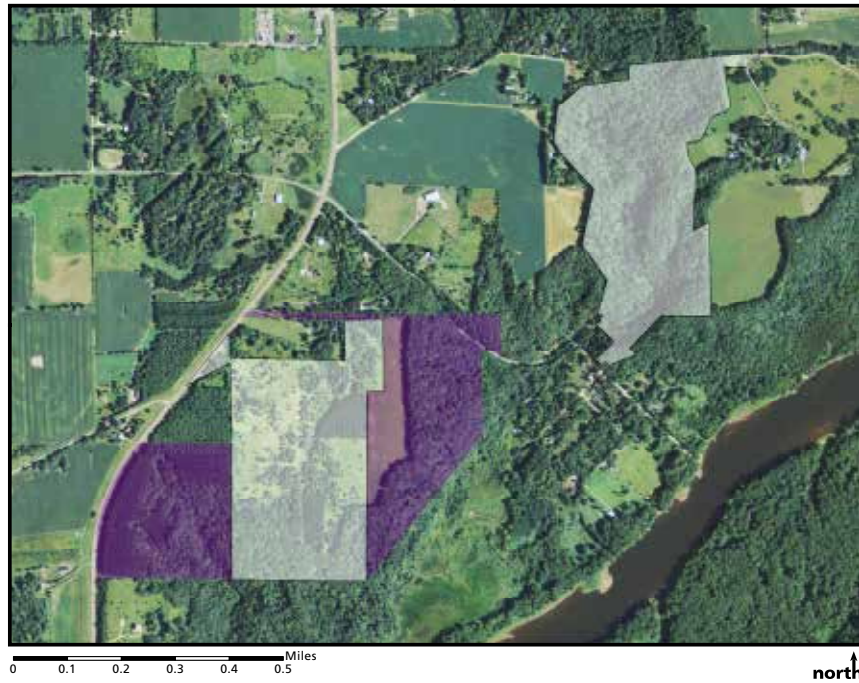
8 **Felton Prairie (Assinaboia Unit) Acquisition Project**



ML16 SNA Acquisition and Restoration Projects



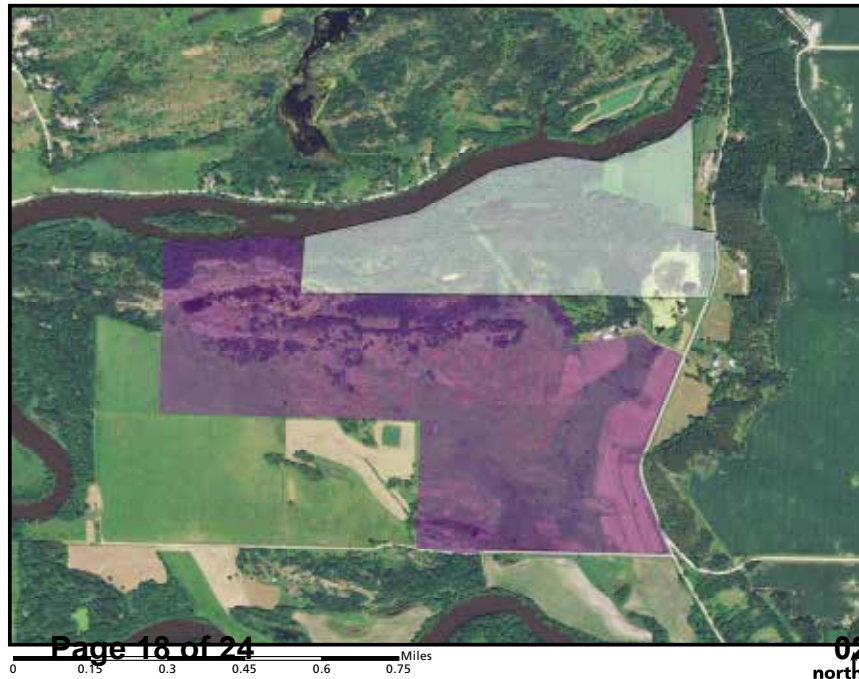
9 **Franconia Bluffs Acquisition Project**



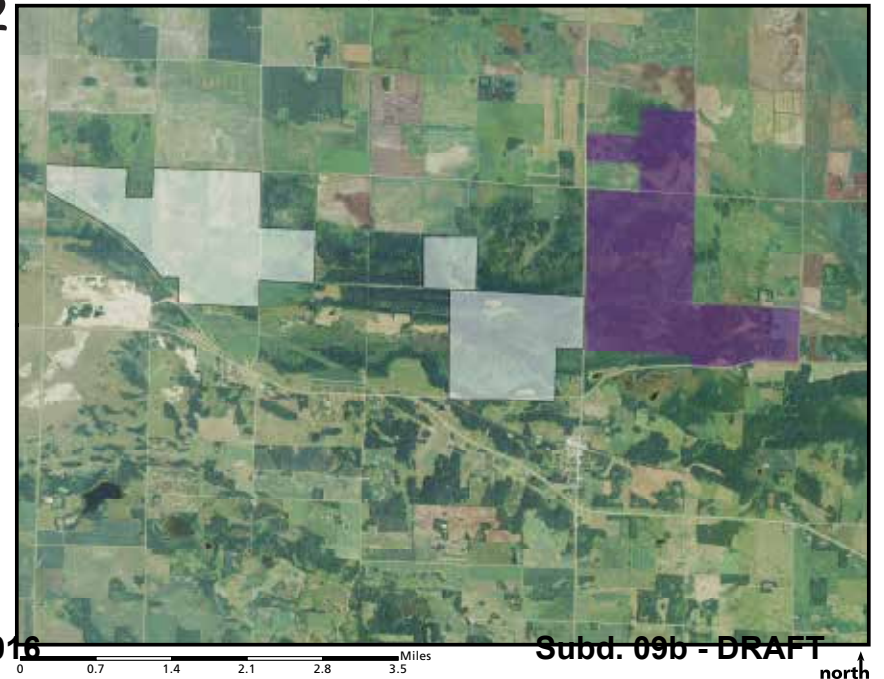
10 **Glacial Ridge Acquisition Project**



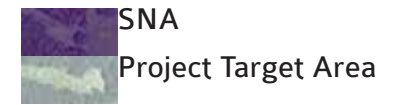
11 **Gneiss Outcrops Acquisition Project**



12 **Gully Fen Acquisition Project**



ML16 SNA Acquisition and Restoration Projects



13 **Hastings Sand Coulee Acquisition Project**



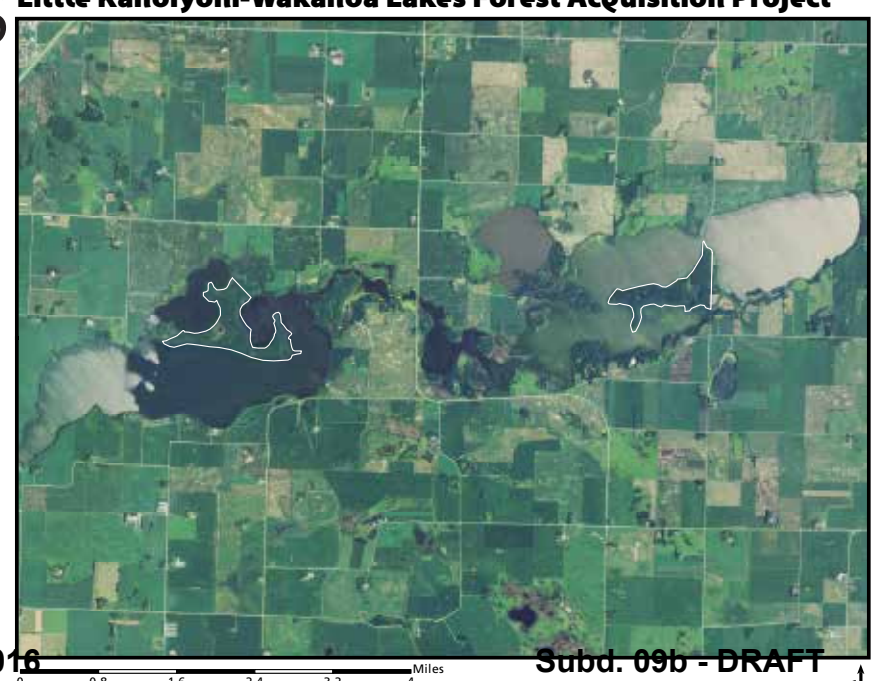
14 **Iron Springs Bog Acquisition Project**



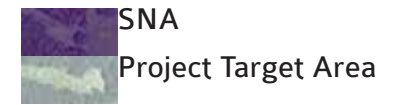
15 **Lake Bronson Parkland Acquisition Project**



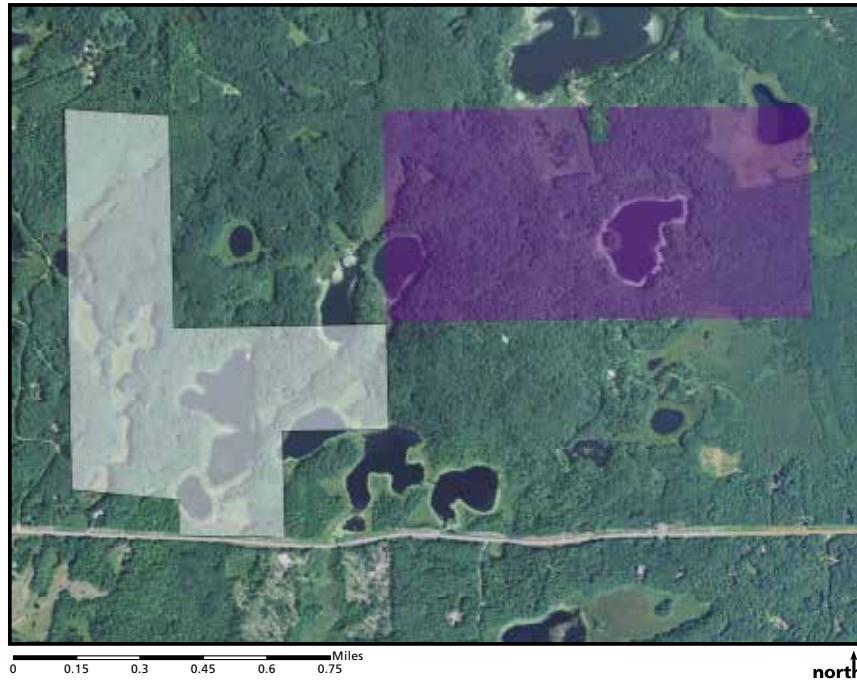
16 **Little Kandiyohi-Wakanda Lakes Forest Acquisition Project**



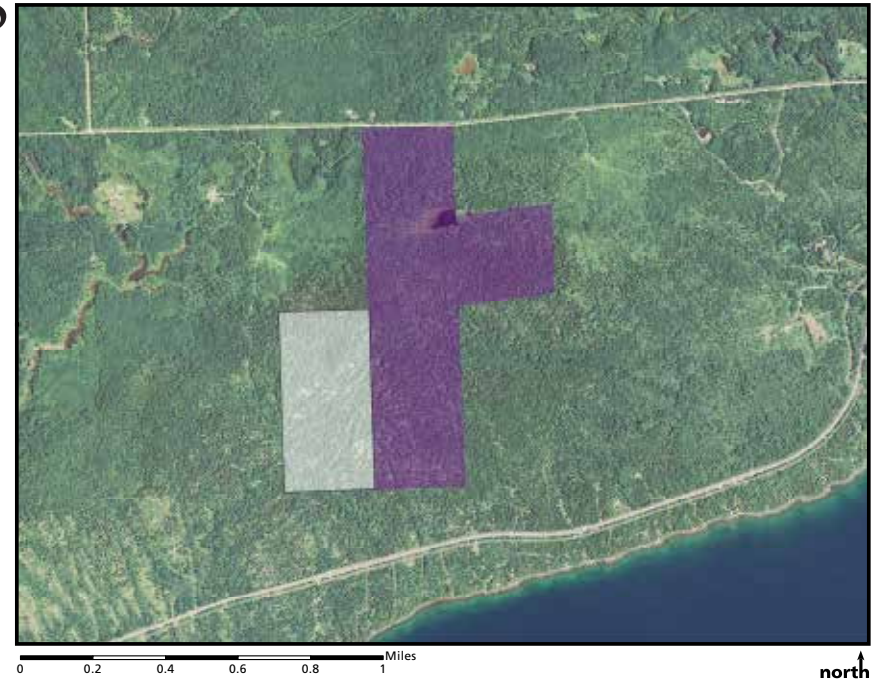
ML16 SNA Acquisition and Restoration Projects



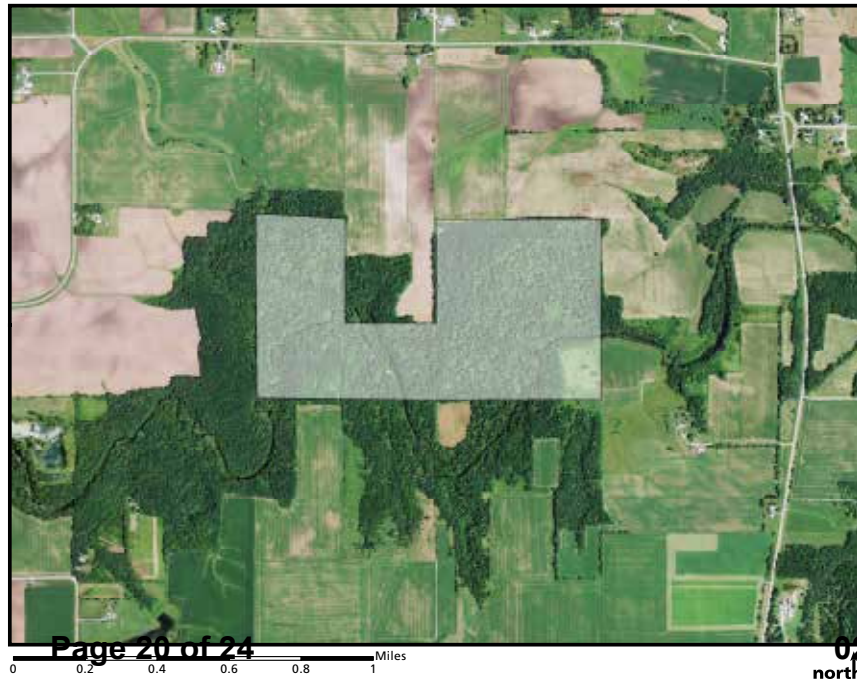
17 **Mille Lacs Moraine Acquisition Project**



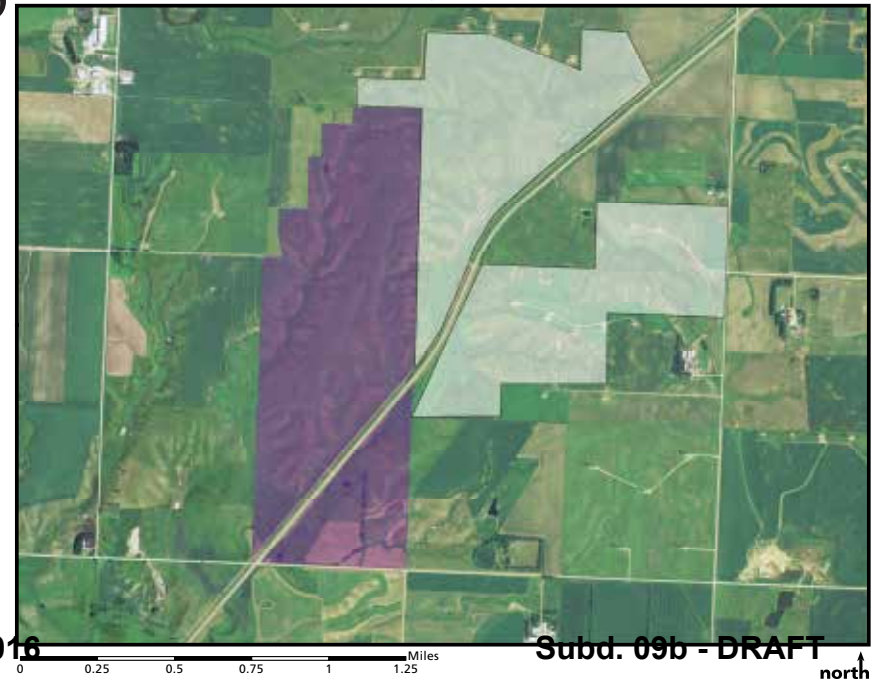
18 **Myhr Creek Ridge Acquisition Project**



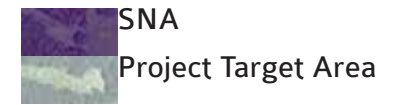
19 **Middle Fork Zumbro River Forest Acquisition Project**



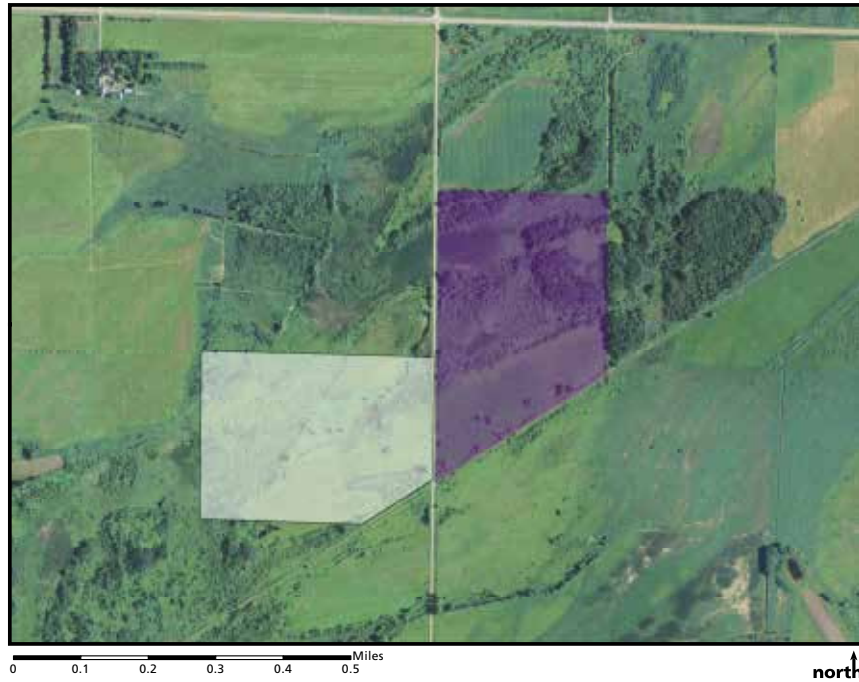
20 **Prairie Coteau Acquisition Project**



ML16 SNA Acquisition and Restoration Projects



21 **Roscoe Prairie Acquisition Project**



22 **Rose Dell Acquisition Project**



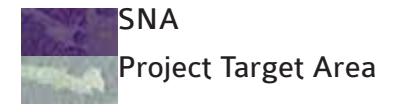
23 **Sandpiper Prairie Acquisition Project**



24 **Seminary Fen Acquisition Project**



ML16 SNA Acquisition and Restoration Projects



25

Spring Hill Fen Acquisition Project



0 0.1 0.2 0.3 0.4 0.5 Miles

north ↑

26

Watrous Island Acquisition Project



0 0.1 0.2 0.3 0.4 0.5 Miles

north ↑

27

Blanket Flower Prairie Restoration Project



0 0.2 0.4 0.6 0.8 1 Miles

north ↑

28

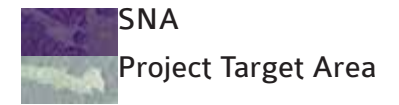
Cannon River Turtle Preserve Restoration Project



0 0.35 0.7 1.05 1.4 1.75 Miles

north ↑

ML16 SNA Acquisition and Restoration Projects



29 **Mound Springs Prairie SNA Prairie Restoration Project**



30 **Rock Ridge Prairie SNA Prairie Restoration Project**



31 **Sandpiper Prairie SNA Prairie Restoration Project**



ML15 SNA Acquisition and Restoration Projects

