



## Environment and Natural Resources Trust Fund (ENRTF) M.L. 2015 Work Plan

---

**Date of Report:** December 9, 2014

**Date of Next Status Update Report:** January 31, 2016

**Date of Work Plan Approval:**

**Project Completion Date:** June 30, 2018

**Does this submission include an amendment request?** No

---

**PROJECT TITLE:** Zumbro River Watershed Recreational Learning Stewardship Sites

**Project Manager:** Lawrence Svien

**Organization:** Zumbro Watershed Partnership Inc.

**Mailing Address:** 1485 Industrial Drive NW

**City/State/Zip Code:** Rochester, MN 55901

**Telephone Number:** (507) 226-6787

**Email Address:** director@zumbrowatershed.org

**Web Address:** www.zumbrowatershed.org

---

**Location:** Goodhue, Dodge, Olmsted, Wabasha Counties. All within the Zumbro River Watershed.

---

**Total ENRTF Project Budget:**

**ENRTF Appropriation:** \$300,000

**Amount Spent:** \$0

---

**Balance:** \$300,000

---

**Legal Citation:** M.L. 2015, Chp. 76, Sec. 2, Subd. 05c

**Appropriation Language:**

\$300,000 the first year is from the trust fund to the commissioner of natural resources for an agreement with the Zumbro Watershed Partnership Inc. to develop at least six recreational and educational sites on the Zumbro River with water quality demonstration elements and interpretive signage designed to encourage adoption of water protection practices. No more than 15 percent of this appropriation may be spent on site and construction consultation, planning, and design. Any plantings or restoration activities conducted with this appropriation must use native plant species according to the Board of Water and Soil Resources' native vegetation establishment and enhancement guidelines. This appropriation is available until June 30, 2018, by which time the project must be completed and final products delivered.

## **I. PROJECT TITLE: Zumbro River Watershed Recreational Learning Stewardship Sites**

### **II. PROJECT STATEMENT:**

The Zumbro River Watershed in southeastern Minnesota is an underutilized and overlooked recreational asset. It is a unique, diverse, and beautiful landscape of great environmental sensitivity. The Zumbro Watershed is 98% privately owned, which imposes limits on the accessibility for the general public to the river. This and other factors have isolated the river from the residents and potential recreational users. A culture of water stewardship is needed in the community where people have developed a personal connection with the river resource, understand their role in protecting it, and become willing to implement effective water protection practices that will help reduce and prevent future pollution and flooding across the Watershed.

The project goal is to promote and enable river related recreational experiences and to tie those experiences with the water quality health of the watershed. This will be accomplished by creating or improving at least 6 water access sites that will attract people to the water resource. While using these access sites educational materials will be present to help connect the use of the water resource with the quality and health of the river. The educational signs or kiosks will highlight local resource issues, opportunities, and highlight what people can do to protect the river. The signs or kiosks will be designed so they present a common theme across the watershed so users who visit more than one site will learn how resource issues in a watershed are related and interconnected and that actions taken in one part of the watershed affect people and the water quality in another part of the watershed.

This project will create or enhance a network of at least 6 accessible, visible public recreational sites with water quality demonstration elements. The sites will promote increased fishing, boating, picnicking, and other water related recreational activities on the Zumbro River. Through the attraction of those recreation opportunities, the sites will educate and encourage people to understand and adopt water protection practices.

This project will benefit the Zumbro River by:

- Addressing recreational, environmental, and educational, needs simultaneously through improved recreational facilities, water access, water quality demonstration elements, and educational kiosks;
- Increasing the Zumbro River's visibility to promote its use as an environmental, educational, and recreational asset;
- Enhancing the Zumbro River State Water Trail as a regional asset;
- Illustrating the diverse environmental challenges and the water protection practices appropriate to the conditions found across the Watershed. These will include:
  - Rural and urban soil and water conservation practices, such as grassland buffers,
  - Management options for woodlands and pastures that promote infiltration,
  - Groundwater protection practices in the (karst) geology,
  - Restored wetlands that provide ecological services,
  - Restored trout streams that provide improved habitat and public access, and
  - Floodplains significance for stream habitat and water quality.
  - Invasive aquatic species challenges and control.

### **III. OVERALL PROJECT STATUS UPDATES:**

**Project Status as of January 31, 2016:**

**Project Status as of June 30, 2016:**

**Project Status as of January 31, 2017:**

**Project Status as of June 30, 2017:**

**Project Status as of January 31, 2018**

**Overall Project Outcomes and Results:**

#### **IV. PROJECT ACTIVITIES AND OUTCOMES:**

**ACTIVITY 1:** Design at least 6 Access and Education Sites and Create Construction Documents

**Description:** A selection process has already been completed with 20 sites nominated by community partners. A ranking process was developed with the same community partners and based on the ranking criteria 8 sites were selected. Ranking criteria was based on 20 factors covering environmental, educational, recreational, community support, and ease of implementation. In addition geographic distribution was also considered to assure that sites covered the 3 ecological regions of the watershed. The sites cover a wide range of geographic locations, resource issues, and potential solutions.

<b>Location</b> (not listed by ranking)	<b>Features</b>	<b>Issues, opportunities</b>
Wanamingo	City Park	Display ag BMP's in close proximity, Historical mill site with portion of dam still in place. Need to maintain large open space for City wide Memorial Day celebration
Mantorville	City Park	Historical park, site of old mill. Dam currently in place. City high priority to demonstrate urban storm water control features. DNR planning bike trail improvements in area also. High level of interest.
Oronoco	New County Park on old Lake Shady	Flood in 2010 damaged dam and reservoir is filled in with sediment. Dam is being removed and sediment being stabilized as original river channels are re-established. Turbidity and sediment from upland erosion resource issues. Site of new planned county park
Wabasha County	Old Green Bridge site	Historical access point currently being used by local people. Good warm water fishery. Impacted by dam on Lake Zumbro and power generation by Rochester Public Utilities. Not designated as a access point and no infrastructure is present. Dirt parking area and access is currently through private property. Steep eroding bank difficult to climb up and down. Swift current makes launching difficult.
Zumbro Falls	City Park	Flooding from 2010 major issue. Little infrastructure currently present. Situated on major US highway. On main stem of Zumbro and can be canoed or kayak year round.
Hammond	Zumbro River landing	Downstream from Zumbro Falls. Flooding from 2010 major issue. Current boat landing is in poor condition. Limited parking along county road. Easy 2-3 hour canoe trip from Zumbro Falls. Significant river traffic already.
Pine Island	Douglas Trail trailhead	Already a city park with infrastructure. 2010 flooding in this area severe. In addition to Zumbro Middle Branch it is the trailhead for the Douglas Bike Trail which will attract a different recreational audience
Rochester	37 <sup>th</sup> Street Bridge	Only access point in north end of Rochester. Can

		demonstrate many urban storm water resource concerns. Near outflow of Rochester wastewater treatment facility. High interest by the City of Rochester to improve access to river in this area and should be able to partner and expand project.
--	--	---

While 6 sites is the goal of the project all the sites will remain on the list to give alternative sites in case one or more of the sites cannot be developed. For each site a series of community engagement/public input meetings will be held with local stakeholders. The purpose of the meetings will be to assure that the sites are compatible with local plans, identify priority local resource concerns, secure local agreement with the project plan, identify local partners capable of contributing both financially and/or in-kind, and define future operation and maintenance responsibilities. Each site will be designed to feature local resource issues and solutions and will also include watershed wide educational themes.

Educational materials may include a variety of water quality educational demonstration infrastructure such as water gardens, bank stabilizations, infiltration swales, use of native plantings, local materials, and interpretive kiosks. Recreational infrastructure may include new or enhanced trailheads, trails, picnic areas, canoe launches, fishing piers, etc.

During the past three years as part of demonstrating the feasibility of this project the plans for Mantorville, Wanamingo, and Green Bridge sites are more developed than the rest of the sites on the list. Meetings with local officials and stake holders on the other sites also occurred. It is anticipated that the rest of the sites in this project will still need to have further civic engagement and public input.

For each selected site the Zumbro Watershed Partnership will lead in the community engagement/ public input process. The University of Minnesota Southeast Regional Sustainable Development Partnership will facilitate a minimum of 2 community outreach meetings per site and 1 watershed wide open house. The purpose of the meetings will be to inform and gather input from stakeholders about plans for each site. ENRTF funds will cover only a portion of the time and resources required to communicate with and enlist the support of community leaders. Where feasible, an effort will be made to form local site host committees provide design feedback, facilitate construction, and assure on-going maintenance by championing the site to public officials and community volunteers and visitors. At a minimum, calls and mailings will invite community members to an initial informational/input session and a subsequent design review session at each of the 6 sites

With information from the public engagement process the University of Minnesota Center for Changing Landscapes will perform a site analysis, create a site design, and prepare construction drawing and specifications suitable for construction by the CCM crew. Local input will be sought in the form of a meeting with stakeholders on site at a minimum of a scoping meeting with local stakeholders and one after site design is completed. Demonstration, educational, and recreational elements will be site-specific and will be further described in ensuing status reports as designs are finalized.

One region-wide open house will also be held to showcase the 6 designs and sites and promote the educational and recreational objectives of the overall project. The meeting will also provide the opportunity of view and provide input on a regional basis. The University of Minnesota Southeast Regional Partnership will lead the outreach effort to facilitate communication between community leaders and the design and construction teams of the University of Minnesota Center for Changing Landscapes and Conservation Corps Minnesota.

**Summary Budget Information for Activity 1:**

**ENRTF Budget: \$74,140**  
**Amount Spent: \$ 0**  
**Balance: \$74,140**

Outcome	Completion Date
1. 6 site designs and construction drawings for CCM crew/community work will be completed	April 2017
2. Engaged community members and community groups for each site to assure that site reflects local resource concerns and values through 12 community engagement meetings in the local communities.	April 2017
3. 1 Region wide open house	April 2017

**Activity Status as of January 31, 2016:**

**Activity Status as of June 30, 2016:**

**Activity Status as of January 31, 2017:**

**Activity Status as of June 30, 2017:**

**Activity Status as of January 31, 2018**

#### **Final Report Summary:**

**ACTIVITY 2** Design and manufacture 24 Recreational, Environmental, & Cultural Kiosk Panels & 6 Watershed Maps Panels.

**Description:** The informational kiosks will be the medium that we intend to use to transmit our message about watershed health and what people can do to make it better. The messages will connect the recreational experience with watershed health and water quality and be a mixture of local resource concerns/opportunities and watershed wide themes. Part of the site selection process was to identify areas that have unique opportunities to educate and demonstrate conservation practices. Local communities also will have the opportunity to identify concepts and features they want to showcase or prioritize. Some elements will be watershed wide and they will be used to tie the individual sites together into a cohesive message. It is our expectation that as people use the sites they will recognize that the sites and messages are connected and related to each other. The purpose of watershed-wide themes will be to enforce the concept that all these solutions impact watershed water quality. They will help make the connection that all these practices are part of a solution and that individual actions can make a difference.

The Center for Changing Landscapes, College of Design, University of Minnesota will collect, analyze, and select interpretive materials; create interpretive images and text, identify cultural, and water quality information, identify web connections for other recreation opportunities or additional informational web sites and generate QR codes to be placed on the signs. The Center will create 24 interpretive panel designs that describe the site, the watershed, water quality BMP's, and cultural and recreation amenities. One watershed map panel will be designed and installed on all 6 sites.

The signs will be manufactured and available for CCM installation.

#### **Summary Budget Information for Activity 2:**

**ENRTF Budget:** \$21,889  
**Amount Spent:** \$ 0  
**Balance:** \$21,889

Outcome	Completion Date
1. Design and manufacture 24 24" by 36" regionally significant interpretive	April 2017

<i>panels that describe the sites, the watershed, water quality BMP's, and cultural and recreation amenities.</i>	
<b>2</b> <i>Design and manufacture one watershed map of recreational, cultural, and environmental assets. One watershed map panel will be designed and installed on all 6 sites.</i>	April 2017

**Activity Status as of January 31, 2016:**

**Activity Status as of June 30, 2016:**

**Activity Status as of January 31, 2017:**

**Activity Status as of June 30, 2017:**

**Activity Status as of January 31, 2018**

#### **Final Report Summary:**

#### **ACTIVITY 3 Construct Sites**

Site amenities and water quality demonstrations will be built/installed on the 6 public accessible sites by the Conservation Corps of Minnesota with assistance from local community and service groups. Printed and digital maps will be created and distributed across the Watershed that highlight the Watershed and the unique recreational qualities, and water quality impact of each site via partner websites and in-print to appropriate government agencies, educational, community, and recreational institutions.

For each site The Center for Changing Landscapes, College of Design, University of Minnesota will hold one pre-construction meeting with CCM staff, a minimum of one and if necessary more construction inspections during installation, and one post construction inspection for payment certification.

#### **Summary Budget Information for Activity 3:**

**ENRTF Budget: \$203,871**  
**Amount Spent: \$ 0**  
**Balance: \$203,971**

<b>Outcome</b>	<b>Completion Date</b>
<b>1.</b> <i>At least 6 built sites Elements on site may include water quality–friendly fishing areas, trails, trailheads, canoe launches, benches, picnic tables, fire rings, parking, interpretive kiosks, rain gardens, band stabilizations, native plantings, invasive species removal, etc. (labor and materials, construction observation, local community engagement, &amp; project management)</i>	October 2017
<b>2</b> <i>Installation of 24 kiosk panels and 6 watershed maps that interpret the watershed's natural, recreational, and cultural environment and promote the sites' water quality demonstrations and other water quality practices</i>	October 2017

**Activity Status as of January 31, 2016:**

**Activity Status as of June 30, 2016:**

**Activity Status as of January 31, 2017:**

**Activity Status as of June 30, 2017:**

## Activity Status as of January 31, 2018

### Final Report Summary:

#### V. DISSEMINATION:

**Description:** Mapping of improved sites will be disseminated by the use of ZWP and RSDP websites, publication on social media such as Facebook, inclusion with Go SE MN website and app, and partners will post on public forums and publication of stories and articles in local print media and in ZWP's newsletters. Printed and digital maps will be created and distributed across the watershed that highlight the watershed, the unique recreational qualities, and the water quality impact of each site via partner websites and in-print to appropriate government agencies, educational, community, and recreational institutions.

Status as of January 31, 2016:

Status as of June 30, 2016:

Status as of January 31, 2017:

Status as of June 30, 2017:

Status as of January 31, 2018

### Final Report Summary:

#### VI. PROJECT BUDGET SUMMARY:

##### A. ENRTF Budget Overview:

Budget Category	\$ Amount	Overview Explanation
Personnel: Zumbro Watershed Partnership	\$ 12,800	Project Coordination – Project Administration: Lawrence Svien, Zumbro Watershed Partnership .15 FTE 100% Salary for 3 years. <i>This position is part time at 25 hours a week. This funding will enable 0.15 FTE of that work to work directly on this project in a project specific capacity. Work on this project will be functioning as the coordinator for this project. At the end of the project the position will either be reduced to reflect the end of the 0.15 FTE/year support or other funding will be secured.</i>
Personnel: Zumbro Watershed Partnership	\$27,000	Public Engagement: Kevin Strauss Education Coordinator, Zumbro Watershed Partnership. <i>Engaging community members and community groups for each site to assure that site reflects local resource concerns and values. Stakeholders may consist of: local units of government, business organizations, active living groups, scout troops, garden clubs, cycling groups, etc., DNR state water trail staff and other governmental units will also be involved. Gather materials: The site's particular existing character and uses, site history, water quality</i>

		<i>issues to be promoted for implementation by site users at home, at work, etc. Working with community partners to create a site vision for each of the 6 sites.</i>
Professional/Technical/Service Contracts:	\$45,000	Professional service agreements. Center for Changing Landscapes, College of Design, University of Minnesota <i>for site design, civic engagement, construction drawings, pre-construction meeting, construction inspection, construction final close out.</i>  <i>Project Leader – Project Designers 0.11 FTE Project Support 0.08 FTE 0.19 FTE total. \$36,000 Site research and design activities 0.16 FTE \$5,000 Signs research and design activities 0.02 FTE \$4,000 Construction activities 0.02 FTE</i>
	\$115,000	Conservation Corps of Minnesota <i>for site construction.</i>
	\$7,000	University of Minnesota Southeast Regional Sustainable Development Partnership <i>Community Outreach: Partial cost of outreach &amp; meeting coordinator (approx. 199 hours @ \$20/hr.) \$3988 1800 post card mailings (50 per site, 3x) \$612 Meeting rental space &amp; refreshments @ \$200 per meeting. \$2400 Community engagement/input meetings and site review. 12 site-specific and 1 open house.</i>
Equipment/Tools/Supplies:	\$79,830	Construction materials, rock, concrete, landscaping timbers, vegetation plantings as determined by the Construction Documents. Approximately \$13,471/site
	\$11,250	Manufacture of Informational Kiosk Panels and Maps \$375/sign
Travel Expenses in MN:	\$2,120	Mileage (\$0.56) for travel to sites and cities.
<b>TOTAL ENRTF BUDGET:</b>	<b>\$300,000</b>	

**Explanation of Use of Classified Staff:** NA

**Explanation of Capital Expenditures Greater Than \$5,000:** NA

**Number of Full-time Equivalents (FTE) Directly Funded with this ENRTF Appropriation:**

0.15 FTE Lawrence Svien, Zumbro Watershed Partnership

0.35 FTE Kevin Strauss Zumbro Watershed Partnership



**Number of Full-time Equivalents (FTE) Estimated to Be Funded through Contracts with this ENRTF****Appropriation:**

0.19 FTE . Center for Changing Landscapes, College of Design, University of Minnesota

- Project Leader – Project Designers 0.11 FTE
- Project Support 0.08 FTE

3.67 FTE Conservation Corps Minnesota work crews.

0.08 FTE University of Minnesota Southeast Regional Sustainable Development Partnership. Outreach and Meeting Coordinator.

**B. Other Funds:**

Source of Funds	\$ Amount Proposed	\$ Amount Spent	Use of Other Funds
<b>Non-state</b>			
SWCD Staff, in-kind	\$10,000	\$	Public outreach and integration with local planning activities
County Staff, in-kind	\$10,000		Public outreach and integration with local planning activities
City Staff, in-kind	\$25,000		Project planning, Coordination, Integration with local planning.
<b>State</b>			
University of Minnesota Southeast Regional Sustainable Development Partnership	\$3138	\$	Partial cost of outreach & meeting coordinator for Community Outreach (approx. 157 hours @ \$20/hr.)
SE RSDP Staff	\$20,000	\$	Project Steering Committee, site selection and design review, public outreach and meeting coordination

**VII. PROJECT STRATEGY:****A. Project Partners:**

- Zumbro Watershed Partnership; providing project administration and coordination, Project Steering Committee, Site Selecton, Local coordination, public engaement \$39,800 ENRTF funds
- U of M Center of Changing Landscapes; Site design, , Construcion inspections and other construcion related activities \$45,000 ENRTF funds
- Conservation Corps Minnesota; providing construcgtion crews and labor to install sites \$115,000 ENRTF funds
- U of M Extension; Site selection and Project Steering Committee
- U of M Southeast Regional Sustainable Development Partnership Coordinating and hosting Community Outreach activities, Project Steering Committee, and site selection \$7,000 ENRTF funds
- Soil and Water Conservation Districts in Wabasha, Goodhue, Olmsted, Dodge counties Site selection and coordiantion activities with LGU's
- County Environemtnal Services in Olmsted, Dodge counties; Site selection and coordination activities with LGU's
- The cities of Wanamingo, Pine Island, Mantorville, Oranoco, Rochester, Zumbro Falls, Hammond; Providing the sites, participation in site design and civic engagement, and donation of labor and materials.
- Minnesota Departement of Natural Resources; Site design and permitting processing

**B. Project Impact and Long-term Strategy:** The impact of the project will be that people in the region will have increased opportunities for recreation on the Zumbro River. In addition it will provide increased education of

residents and visitors on the interconnections of the watershed, landuse, history, and people in the watershed. We anticipate that there will be 6 new sites where ZWP and others can conduct out-door classrooms on a variety of topics.

**C. Funding History:**

<b>Funding Source and Use of Funds</b>	<b>Funding Timeframe</b>	<b>\$ Amount</b>
University of Minnesota, SE Regional Sustainable Development Partnership		\$46,100
University of Minnesota, Center of Rural and Urban Affairs		\$7,000

**VIII. FEE TITLE ACQUISITION/CONSERVATION EASEMENT/RESTORATION REQUIREMENTS:**

**A. Parcel List: NA**

**B. Acquisition/Restoration Information: NA**

**IX. VISUAL COMPONENT or MAP(S): See Attached.**

**XI. REPORTING REQUIREMENTS:**

Periodic work plan status update reports will be submitted no later than January 31, 2016, January 31, 2017, January 31, 2018. A final report and associated products will be submitted between June 30 and August 15, 2018.

Environment and Natural Resources Trust Fund  
M.L. 2015 Project Budget



Project Title: Zumbro River Watershed Recreational Learning Stewardship Sites

Legal Citation: Fill in your project's legal citation from the appropriation language - this will occur after the 2015 legislative session.

Project Manager: Lawrence Svien

Organization: Zumbro Watershed Partnership Inc.

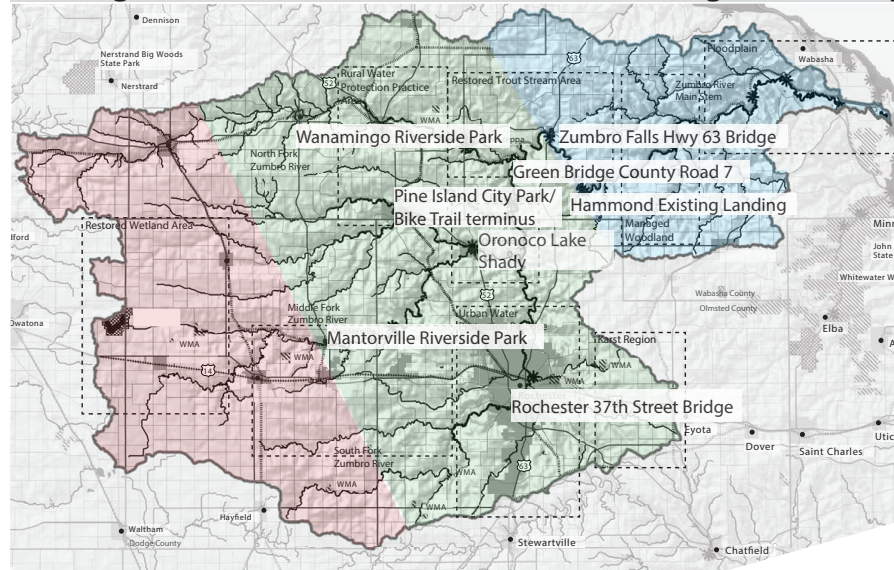
M.L. 2015 ENRTF Appropriation: \$ 300,000

Project Length and Completion Date: 3 Years, June 30, 2018

Date of Report: Dec 2, 2014

ENVIRONMENT AND NATURAL RESOURCES TRUST FUND BUDGET	Activity 1 Budget	Amount Spent	Activity 1 Balance	Activity 2 Budget	Amount Spent	Activity 2 Balance	Activity 3 Budget	Amount Spent	Activity 3 Balance	TOTAL BUDGET	TOTAL BALANCE
BUDGET ITEM	Public Engaement, Education, and Design 6 Access and Education Sites			Design 30 Recreational, Environmental, & Cultural Kiosk Panels & Watershed Maps			Construct Sites				
Personnel (Wages and Benefits)											
Project Administration: Lawrence Svien, Zumbro Watershed Partnership .15 FTE 100% Salary for 2 years. This position is part time at 25 hours a week. This funding will enable 0.15 FTE of that work to work directly on this project in a project specific capacity. Work on this project will be functioning as the coordinator for this project. At the end of the project the position will either be reduced to reflect the end of the 0.15 FTE/year support or other funding will be secured.	\$4,267	\$0	\$4,267	\$4,266	\$0	\$4,266	\$4,267	\$0	\$4,267	\$12,800	\$12,800
Public Engagement: Kevin Strauss, Education Coordinator, Zumbro Watershed Partnership. Engaging community members and community groups for each site to assure that site reflects local resouce concerns and values Stakeholders may consist of: local units of govemements, business organizations, active living groups, scout troops, garden clubs, cycling groups, etc., DNR state water trail staff and other governmental units will also be involoved. Gather materials: The site's particular existing character and uses, site history, water quality issues to be promoted for implementation by site users at home, at work, etc. Working with community partners create a site vision for each of the 6 sites.	\$26,000	\$0	\$26,000	\$1,000	\$0	\$1,000				\$27,000	\$27,000
Professional/Technical/Service Contracts											
Contracts: Center for Changing Landscapes, College of Design, University of Minnesota. Perform a site analysis, create a site design, and prepare construction drawing and specifications suitable for construction by the CCM crew. Meets with stakeholders on site at a minimum of a scoping meeting with local stakeholders, one after site design is completed, and one post construction inspection.	\$36,000	\$0	\$36,000	\$5,000	\$0	\$5,000	\$4,000	\$0	\$4,000	\$45,000	\$45,000
Contracts: Conservation Corps of Minnesota							\$115,000	\$0	\$115,000	\$115,000	\$115,000
Contracts: University of Minnesota Southeast Regional Sustainable Development Partnership will conduct 12 community outreach meetings and 1 watershed wide open house. The purpose of the meetings will be to inform and gather input from the stakeholders about plans for each site. ENRTF funds will cover only a portion of the time and resources required to communicate with and enlist the support of community leaders Community Outreach.	\$7,000	\$0	\$7,000							\$7,000	\$7,000
Equipment/Tools/Supplies											
Equipment/Tools/Supplies: Construction materials, rock, concrete, landscaping timbers, \$13,471/site x 6 sites							\$79,830	\$0	\$79,830	\$79,830	\$79,830
Supplies: Manufacture and Printing 30 24" x 36" full color image on 1/4" aluminum with UV protective coating finish @ \$375/panel				\$11,250	\$0	\$11,250				\$11,250	\$11,250
Travel expenses in Minnesota											
Travel to sites and cities	\$873	\$0	\$873	\$373	\$0	\$373	\$874	\$0	\$874	\$2,120	\$2,120
COLUMN TOTAL	\$74,140	\$0	\$74,140	\$21,889	\$0	\$21,889	\$203,971	\$0	\$203,971	\$300,000	\$300,000

## Building Zumbro Watershed / Recreation/Learning Stewardship Sites



Zumbro River Watershed



Three Regions of the Watershed

- The Blufflands
- Rochester Plateau
- Oak Savanna

### Site Locations:

#### Main Stem

- Green Bridge County Road 7
- Hammond Existing Landing
- Zumbro Falls Hwy 63 Bridge

#### North Fork

- Wanamingo Riverside Park

#### Middle Fork

- Mantorville Riverside Park
- Oronoco Lake Shady
- Pine Island City Park/Bike terminus

#### South Fork

- Rochester 37th Street Bridge

### Site Selection Criteria:

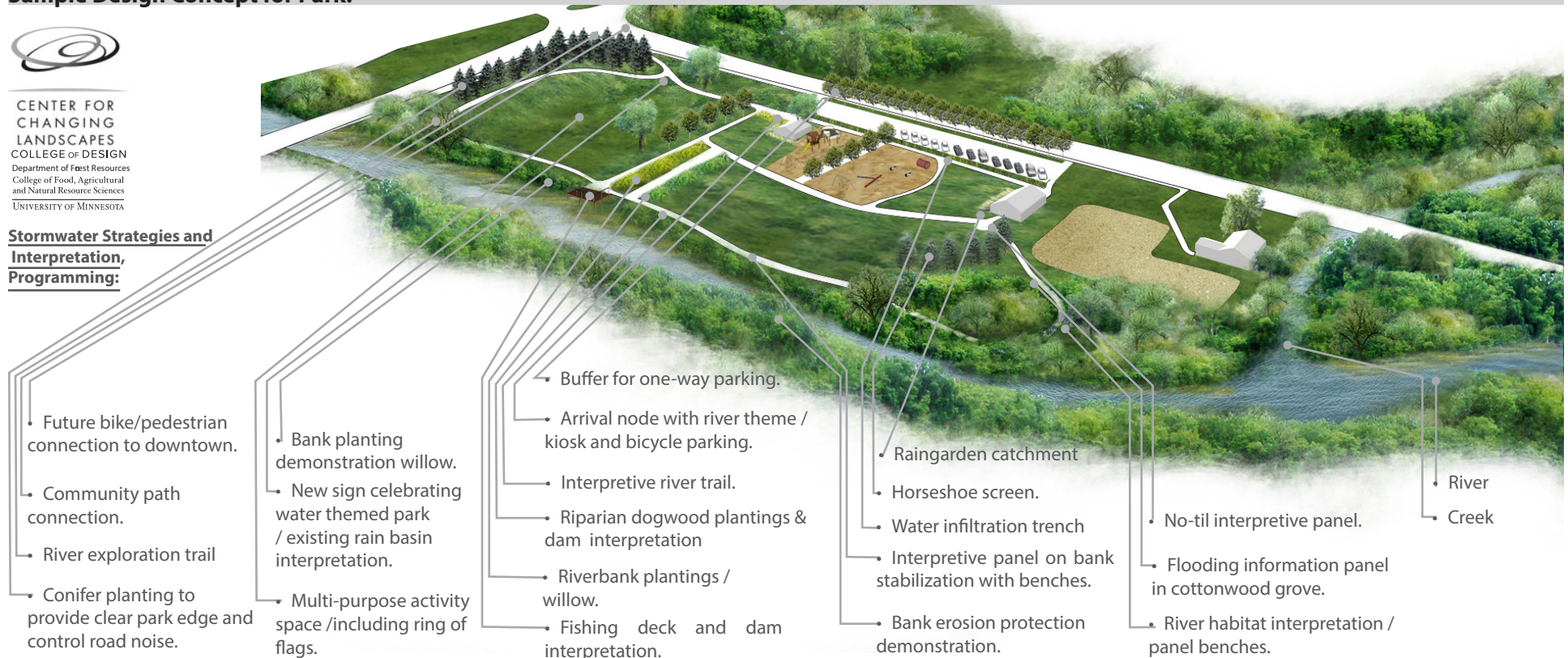
- Watershed Significance: Addresses the Zumbro Watershed Management Plan's goals & strategies;
- Ecological Significance: Reflects ecological challenges & diverse environments;
- Educational Significance: Illustrates a variety of water quality strategies;
- Recreational Significance: Enhances fishing, boating, birding, picnicking, etc. &
- Community Support: Local government, citizens, schools, conservation & recreation groups support it.

## Sample Design Concept for Park:



CENTER FOR  
CHANGING  
LANDSCAPES  
COLLEGE OF DESIGN  
Department of Forest Resources  
College of Food, Agricultural  
and Natural Resource Sciences  
UNIVERSITY OF MINNESOTA

### Stormwater Strategies and Interpretation, Programming:



- Future bike/pedestrian connection to downtown.
- Community path connection.
- River exploration trail

- Conifer planting to provide clear park edge and control road noise.

- Bank planting demonstration willow.
- New sign celebrating water themed park / existing rain basin interpretation.

- Multi-purpose activity space /including ring of flags.

- Buffer for one-way parking.
- Arrival node with river theme / kiosk and bicycle parking.
- Interpretive river trail.
- Riparian dogwood plantings & dam interpretation
- Riverbank plantings / willow.
- Fishing deck and dam interpretation.

- Raingarden catchment
- Horseshoe screen.
- Water infiltration trench
- Interpretive panel on bank stabilization with benches.
- Bank erosion protection demonstration.

- No-til interpretive panel.
- Flooding information panel in cottonwood grove.
- River habitat interpretation / panel benches.

River  
Creek