



Environment and Natural Resources Trust Fund (ENRTF) M.L. 2013 Work Plan

Date of Status Update Report: September 28, 2012

Date of Next Status Update Report:

Date of Work Plan Approval:

Project Completion Date: June 30, 2016

Is this an amendment request? No

PROJECT TITLE: Restoring Water Quality on Fourteen Southern Minnesota Lakes

Project Manager: Lauren Klement

Affiliation: Le Sueur County

Mailing Address: 88 South Park Avenue

City/State/Zip Code: Le Center MN 56057-1600

Telephone Number: (507) 357-8540 (metro line)

Email Address: lklement@co.le-sueur.mn.us

Web Address: <http://www.co.le-sueur.mn.us/>

Location: South Central Minnesota: Blue Earth County, Le Sueur County and Waseca County

Total ENRTF Project Budget:

ENRTF Appropriation: \$463,000

Amount Spent: \$0

Balance: \$463,000

Legal Citation: M.L. 2013, Chp. xx, Sec. xx, Subd. xx

Appropriation Language:

DRAFT

I. PROJECT TITLE: Restoring Water Quality on Fourteen Southern Minnesota Lakes

II. PROJECT STATEMENT:

South Central Minnesota lakes and streams located in Blue Earth, Le Sueur and Waseca Counties provide direct benefits that include hydrologic storage, economic and recreational opportunities and improving water quality. What makes this project significant is that local monitoring efforts have placed project lakes (Lake Emily is scheduled for monitoring in 2013) and several area streams on the Minnesota Pollution Control Agency's 2010 and 2012 draft list of impaired waters to the United States Environmental Protection Agency's (USEPA) 303d list. Impairments listed are for excess nutrients and the bacteria E. Coli. For lakes the impairment of excess nutrients in this case refers to total phosphorus in the water column. The tool to improve water quality is through the Total Maximum Daily Load (TMDL) process which creates implementation plans that address the impaired waters. The TMDL process on these lakes is currently scheduled beyond 2015. Improving water quality will ultimately benefit the local and state economy with positive impacts to water recreation (boating, fishing, swimming, and camping), increased property values, people will want to live near these water resources and improving water quality will improve aquatic and wildlife habitats in the project area.

The overall goal of the three-year project is to improve water quality of 10 Southern Minnesota lakes and 14 waterways in the tri-county area. This project is built upon solid integration of diverse local communities working together to ensure project success. The direct outcomes are to complete 15 best management practices (BMPs) contracts on agricultural land in priority areas; complete 24 shoreland BMPs for a total of 39 ten-year length contracts. The project has 13 high profile public projects which are the City of Waterville with 9 restoration projects at five locations, Waterville Elysian Morristown School District, Waseca City Park on Clear Lake has two projects and Blue Earth County Bray Park on Madison Lake has a ravine stabilization project. One project will enhance a current Minnesota River Conservation Reserve Enhancement Program (CREP) project on the Natural Resources Conservation Service "Conservation Reserve Program" contractual portion. The remainder of projects consists of private shoreland projects of infiltration basins, shoreland restorations and native plantings on public waters. All agricultural and shoreland projects have a direct impact to public surface waters in shoreland or on waterways that have a direct impact to rivers and lakes.

BMPs include infiltration basins, stream restoration, shoreline restorations and native plantings. Project locations have been prioritized and determined. Maintenance will be addressed through the inspection process. Funding of maintenance will be addressed by landowners through a contract. Maintenance due to damage from abnormal acts of nature will be addressed by each county. Le Sueur County has funding set aside for natural disaster damage. Installing shoreland and agricultural BMPs are listed in project partners' comprehensive local water management plans and Soil and Water Conservation District plans as high priority. Another component of the project that is not requesting funding but goes hand in hand with implementation and dissemination is civic engagement. The civic engagement component offers "learning by doing", it is a powerful tool of instilling a sense of community ownership through citizen participation, informational and educational opportunities and dissemination of information that will involve at least 1000 residents.

The project will achieve its goals and outcomes through a) the relationships between competent local water resource managers that also work closely with the Board of Water and Soil Resources, the project team, active citizens and organizations, b) successful project management and c) successful grant management and c) successful implementation process including inspection process is in place. Civic engagement involves ten area lake associations, the Tri County Coalition of Lake Associations, community members at large, youth groups, organizations, local students, service organizations, Pheasants Forever and the Southern Lakes Chapter of the Minnesota Dark House and Anglers Association are all active partners in civic engagement. Conservation Corp Minnesota will be considered with future Clean Water Funding for maintenance of damage due to disastrous acts of nature.

III. PROJECT STATUS UPDATES:

Activity Status as of January 31, 2013:

Activity Status as of July 30, 2013:

Activity Status as of January 31, 2014:

Activity Status as of July 30, 2014:

Activity Status as of January 31, 2015

Activity Status as of July 15, 2015

Activity Status as of January 31, 2016

Final Report Summary: July 15, 2016

IV. PROJECT ACTIVITIES AND OUTCOMES:

ACTIVITY 1:

Description:

Element 1: Install Shoreland and Agricultural Best Management Practices

Goal 1: Completed contracts for Ag and shoreland Best Management Practices that will improve water quality, reducing TP, TSS and E. Coli in the water column.

Objective 1: Prioritize the 39 agricultural and shoreland projects by October 1, 2012.

Action 1A: Create prioritizing criteria-Completed.

Action 1B: Prioritize the projects-Completed.

Objective 2: Through Technical Assistance, complete 15 project contracts for Ag BMPs and 24 project contracts for shoreland BMPs in target areas through Technical Assistance.

Action 2A: Complete project development of restoration plans consistent with conservation and ecological goals for each site.

Action 2B: Use administrative and construction process already in place for cost share.

Action 2C: Respective counties approve contract projects for completion.

Action 2D: Oversee projects: construct and inspect.

Action 2E: Payout process.

Action 2F: Biannual project review throughout project length.

Action 2G: Evaluation of projects will be completed in 2016 and in 2019.

Summary Budget Information for Activity 1:

ENRTF Budget: \$ 463,000

Amount Spent: \$ 0

Balance: \$463,000

Activity 1: Installing Best Management Practices-Completion Date: May 31, 2015

| Outcome | Completion Date | Budget |
|--|------------------------|------------------------------------|
| 1. Prioritize agricultural and shoreland projects. | October 1, 2012 | N/A |
| 2. Complete project development of restoration plans consistent with conservation and ecological goals for each site. | July 31, 2013 | N/A |
| 3. Complete 15 project contracts for Ag BMPs and 24 project contracts for shoreland BMPs in target areas. | May 17, 2016 | \$395,482 ENTF and \$140,981 Match |
| 4. Provide Technical Assistance for project oversight. | June 1, 2016 | \$67,518 |

Activity Status as of January 31, 2013:

Activity Status as of July 30, 2013:

Activity Status as of January 31, 2014:

Activity Status as of July 30, 2014:

Activity Status as of January 31, 2015

Activity Status as of July 30, 2015

Activity Status as of January 31, 2016
Final Report Summary: July 15, 2016

ACTIVITY 2:

Description:

Element 2 Civic Engagement and Education

Goal 2: Engaged citizens through project participation and input in watershed management.

Objective 3: Organize volunteers for community projects.

Action 3A: Respective partners will create a list and contact volunteers and organizations.

Action 3B: Contact interested participants with scheduling options.

Action 3C: Determine dates and time for project participation.

Action 3D: Follow up with volunteers (reminder) prior to scheduled date.

Action 3E: Create task list.

Action 3F: Conduct volunteer participation project.

Objective 4: Conduct two Neighborhood Table Talk discussion groups regarding shoreland BMP perception and/or civic engagement during project length.

Action 4A: Develop agenda and questions for table talk discussion.

Action 4B: Locate participating neighborhood (s).

Action 4C: Locate Hosts.

Action 4D: Set Date and time.

Action 4E: Send out personal invitations.

Action 4F: Conduct event and gather information.

Action 4G: Create report.

Objective 5: Conduct one Waterville project celebration event at a restored site in Waterville by May 2016.

Action 5A: Develop plan and event agenda.

Action 5B: Locate the completed project area to hold the event.

Action 5C: Advertise.

Action 5D: Promote through Lake Association newsletters and e-mail contacts and city newsletters/website.

Action 5E: Conduct event.

Action 5F: Gather information.

Action 5G: Create report.

Objective 6: Engage at least 1000 citizens in watershed management through lake association meetings, activities, news releases, newsletters and events.

Action 7A: Conduct Lake Association Board meetings and annual meetings.

Action 7B: Organize and conduct lake association activities and newsletters.

Action 7C: Report activities to the project coordinator.

Summary Budget Information for Activity 2:

ENRTF Budget: \$ 0.00
Amount Spent: \$ 0
Balance: \$0.00

Activity Completion Date:

| Outcome | Completion Date | Budget |
|--|------------------------|-----------------|
| 3. Organize volunteers for community projects and project participation. | May 2015 | \$5,254 inkind |
| 4. Conduct two Neighborhood Table Talk discussion group regarding shoreland BMP perception and/or civic engagement. | May 1, 2016 | \$1,935 inkind |
| 5. Conduct one Waterville project celebration event at a restored site in Waterville by project end. | May 15, 2016 | \$3,250 inkind |
| 6. Engage, educate and inform 1000 citizens in watershed management | May 15, 2016 | \$99,481 inkind |

| | | |
|---|--|--|
| through lake association meetings, activities, news releases, newsletters and events. | | |
|---|--|--|

Activity Status as of January 31, 2013:
Activity Status as of July 30, 2013:
Activity Status as of January 31, 2014:
Activity Status as of July 30, 2014:
Activity Status as of January 31, 2015
Activity Status as of July 30, 2015
Activity Status as of January 31, 2016
Final Report Summary: July 15, 2016

V. DISSEMINATION:

Description:

Dissemination of the project will take place through Lake Association meetings, newsletters, news releases to local newspapers, Waterville city water bill, the civic engagement component of the project, and promoted on project partners' websites:

- Le Sueur County website at <http://www.co.le-sueur.mn.us/EnvironmentalServices.html>
- Le Sueur SWCD: <http://lesueurswcd.org/>
- Waseca SWCD: <http://wasecaswcd.org/>
- Blue Earth SWCD: <http://blueearthswcd.org/>

Activity Status as of January 31, 2013:
Activity Status as of July 30, 2013:
Activity Status as of January 31, 2014:
Activity Status as of July 30, 2014:
Activity Status as of January 31, 2015
Activity Status as of July 30, 2015
Activity Status as of January 31, 2016
Final Report Summary: July 15, 2016

VI. PROJECT BUDGET SUMMARY:

A. ENRTF Budget:

| Budget Category | \$ Amount | Explanation |
|--|------------------|--|
| Other: 75%/25% cost share on Best Management Practices (BMP) installation, Technical Assistance | 395,482 | ENRTF funds will go towards installation of best management practices through 75/25 % cost share. |
| Other: Technical Assistance by Soil and Water Conservation District and County staff for project oversight | 67,518 | ENRTF funds will provide technical assistance and project oversight for shoreland and ag BMP projects. |
| TOTAL ENRTF BUDGET: | \$463,000 | |

Explanation of Use of Classified Staff: N/A

Explanation of Capital Expenditures Greater Than \$3,500: N/A

Number of Full-time Equivalent (FTE) funded with this ENRTF appropriation: N/A

Number of Full-time Equivalent (FTE) estimated to be funded through contracts with this ENRTF appropriation: N/A

B. Other Funds:

| Source of Funds | \$ Amount Proposed | \$ Amount Spent | Use of Other Funds |
|--|--------------------|-----------------|--|
| Non-state | | | |
| Waterville Lakes Association | \$500 | \$0.00 | Funding for Civic Engagement Component |
| Minnesota Dark House and Anglers Association | \$250 | \$0.00 | Funding for Civic Engagement Component |
| Le Sueur County | \$3,000 | \$0.00 | To go towards cost share for BMPs in Le Sueur County |
| TOTAL OTHER FUNDS: | \$ 3,750 | \$ | |

VII. PROJECT STRATEGY:

A. Project Partners:

Project participation receiving funds through the Environment and Natural Resources Trust Fund (ENRTF):

*This table represents the funds that are requested by the Local Unit of Government to complete all projects.

| LGU | Amount Receiving |
|--------------------|------------------|
| Le Sueur County | \$ 77,154 |
| Le Sueur SWCD | \$102,658 |
| Waseca SWCD | \$ 84,788 |
| Blue Earth SWCD | \$ 46,000 |
| City of Waterville | \$152,400 |
| Total Grant | \$463,000 |

List of shoreland project partners indirectly receiving funds through respective LGU's through the Environment and Natural Resources Trust Fund (ENRTF):

| Name | Amount based on estimates |
|--|---------------------------|
| Springmeyer | \$4,305 |
| Waterville Elysian Morrystown School District | 10,414 |
| Knudson/Williams | \$6,492 |
| Kamp Dels | \$4,767 |
| Mader (*\$3,000 cash match to be used on this project) | \$400 |
| The Landing Neighborhood Association | \$7,197 |
| Barnlund | \$819 |
| Houser | \$8,097 |
| Marie Lane Neighborhood Association | \$10,047 |
| Lake Washington Improvement Association | \$21,158 |
| Kanewischer | \$16,354 |

List of private Ag project Partners indirectly receiving funds through the Environment and Natural Resources Trust Fund (ENRTF):

| Name | Amount based on estimate | Name | Amount based on estimate |
|-------------|--------------------------|--------------|--------------------------|
| McGillen | \$3,500 | Berndt | \$3,500 |
| Sexe | \$3,500 | Hanks | \$3,500 |
| Petricka | \$3,500 | Sohm | \$3,500 |
| Krautkremer | \$3,500 | D. Koppelman | \$5,000 |
| Gostomczik | \$3,500 | P. Koppelman | \$5,000 |
| McCarthy | \$3,500 | Vail | \$30,267 |
| Scheuerer | \$3,500 | Jones | \$21,000 |

Project partners financially supporting the project with cash match:

- Waterville Lakes Association
- Southern Lakes Chapter of the Minnesota Dark House and Anglers Association
- Le Sueur County

Partners supporting the project through in-kind

- Lake Washington Improvement Association
- Waterville Lakes Association
- Lake Francis Association
- Madison Lake Watershed and Lake Association
- Tri County Coalition of Lake Associations
- Boy and Girl Scouts
- Faith based youth groups
- Students and School District
- Lake Emily Association
- Gorman Lake Association
- Lake Elysian Association
- Waseca Lakes Association
- City of Waterville
- 4-H
- Chamber of Commerce members
- Community members at large

Partners supporting the project but have in-kind committed to other projects:

- Jefferson German Lake Association
- Le Sueur County Pheasants Forever Chapter
- Lake Volney Association

B. Project Impact and Long-term Strategy: The importance of this project is that monitoring efforts has placed project lakes on the USEPA impaired waters list. Previous projects in the area include Clean Water Partnership Assessment projects in each county on watersheds and lakes. Surface Water Assessment projects have been completed on assorted lakes and watersheds. Counties and SWCD’s have also been partners in 319 implementation grants. This project is carrying the citizen momentum to clean up our lakes and streams from previous assessment projects. This project will also benefit the TMDL implementaton process. This is a project that will allow project partners to begin to improve water quality now.

C. Spending History:

| Funding Source | M.L. 2007 or FY08 | M.L. 2008 or FY09 | M.L. 2009 or FY10 | M.L. 2010 or FY11 | M.L. 2011 or FY12-13 |
|----------------|-------------------------|-------------------------|-------------------------|-------------------------|----------------------------|
| Not Applicable | | | | | |

VIII. ACQUISITION/RESTORATION LIST: See Acquisition/Restoration List attachment

IX. MAP: See Page 8

X. RESEARCH ADDENDUM:N/A

XI. REPORTING REQUIREMENTS:

Periodic work plan status update reports will be submitted not later than January 31, 2014, 2015, 2016; July 30 2013, 2014, 2015; and July 15, 2016 for the final report. A final report and associated products will be submitted between June 30 and August 15, 2016 as requested by the LCCMR.

Environment and Natural Resources Trust Fund
M.L. 2013 Acquisition/Restoration List

Project Title: Restoring Water Quality on Fourteen Southern Minnesota Lakes

Project Manager Name: Lauren Klement

M.L. 2013 ENRTF Appropriation: \$ 463,000

| # | Acquisition or Restoration Parcel Name | Activity Description | # of Acres | # of Shoreline Miles | Type of Landowner | Proposed Fee Title or Easement Holder (if applicable) | Status |
|----|--|------------------------------------|------------|----------------------|-------------------|---|--|
| 1 | McGillen | Water and sediment retention basin | 40 | 0.34 | Private | N/A | Obtain contract signature upon funding |
| 2 | McGillen | Water and sediment retention basin | 40 | 0.24 | Private | N/A | Obtain contract signature upon funding |
| 3 | Gibbs | Water and sediment retention basin | 5 | 0.11 | Private | N/A | Obtain contract signature upon funding |
| 4 | Petricka | Water and sediment retention basin | 50 | 0.55 | Private | N/A | Obtain contract signature upon funding |
| 5 | Krautkremer | Water and sediment retention basin | 30 | 0.18 | Private | N/A | Obtain contract signature upon funding |
| 6 | Gostomczik | Water and sediment retention basin | 52 | 0.2 | Private | N/A | Obtain contract signature upon funding |
| 7 | McCarthy | Water and sediment retention basin | 100 | 0.95 | Private | N/A | Obtain contract signature upon funding |
| 8 | Scheurer | Water and sediment retention basin | 30 | 0.45 | Private | N/A | Obtain contract signature upon funding |
| 9 | Berndt | Water and sediment retention basin | 59 | 0.17 | Private | N/A | Obtain contract signature upon funding |
| 10 | Hanks | Water and sediment retention basin | 77 | 0.3 | Private | N/A | Obtain contract signature upon funding |
| 11 | Sohm | Water and sediment retention basin | 20 | 0.1 | Private | N/A | Obtain contract signature upon funding |
| 12 | D Koppelman | Wetland restoration | 20 | 0.1 | Private | N/A | Obtain contract signature upon funding |
| 13 | P Koppelman | Wetland restoration | 20 | 0.1 | Private | N/A | Obtain contract signature upon funding |
| 14 | Vail | Ravine stabilization | 1.4 | 0.05 | Private | N/A | Obtain contract signature upon funding |
| 15 | Vail | Ravine stabilization | 2.2 | 0.05 | Private | N/A | Obtain contract signature upon funding |
| 16 | Bray | Ravine stabilization | 102 | 0.3 | Public | N/A | Obtain contract signature upon funding |

| | | | | | | | |
|----|------------------------|---|------|------|---------|-----|--|
| 17 | Jones | Water and sediment retention basin | 50 | 0.34 | Private | N/A | Obtain contract signature upon funding |
| 18 | Clear Lake Park | Shoreline restoration and infiltration basin | 0.5 | 0.1 | Public | N/A | Obtain contract signature upon funding |
| 19 | Springmeyer | Infiltration basin | 0.3 | 0.1 | Private | N/A | Obtain contract signature upon funding |
| 20 | Waterville Mini Park | Shoreline restoration | 0.15 | 0.02 | Public | N/A | Obtain contract signature upon funding |
| 21 | Waterville Tower A & B | Route impervious surface, infiltration basin | 1.2 | 0.04 | Public | N/A | Obtain contract signature upon funding |
| 23 | WEM School District | Water retention, infiltration | 0.88 | 0.06 | Public | N/A | Obtain contract signature upon funding |
| 24 | Lions Park | Stream/shoreline restoration, infiltration, native planting | 0.13 | 0.01 | Public | N/A | Obtain contract signature upon funding |
| 25 | Lions Park | Stream/shoreline restoration, infiltration, native planting | 0.5 | 0.06 | Public | N/A | Obtain contract signature upon funding |
| 26 | Lions Park | Stream/shoreline restoration, infiltration, native planting | 0.25 | 0.07 | Public | N/A | Obtain contract signature upon funding |
| 27 | Lions Park | Stream/shoreline restoration, infiltration basin, native planting | 0.5 | 0.05 | Public | N/A | Obtain contract signature upon funding |
| 28 | Knudson | Infiltration basin | | 0.04 | Private | N/A | Obtain contract signature upon funding |
| 29 | Kamp | Infiltration basin | | 0.15 | Private | N/A | Obtain contract signature upon funding |
| 31 | Mader | Native buffer | | 0.02 | Private | N/A | Obtain contract signature upon funding |
| 32 | The Landing | Native planting, infiltration basin | 5 | 0.01 | Private | N/A | Obtain contract signature upon funding |
| 33 | Barnlund | Infiltration basin | 0.1 | 0.02 | Private | N/A | Obtain contract signature upon funding |
| 34 | Houser | Infiltration basin | 10 | 0.02 | Private | N/A | Obtain contract signature upon funding |
| 35 | Marie Access | Water retention, infiltration | 0.5 | 0.02 | Private | N/A | Obtain contract signature upon funding |
| 36 | Clinton | Water retention enhancement | 51 | | Private | N/A | Obtain contract signature upon funding |
| 37 | Newland | Water retention enhancement | 20 | | Private | N/A | Obtain contract signature upon funding |
| 38 | Kanewischer | Infiltration basin, shoreline restoration | 0.14 | 0.04 | Private | N/A | Obtain contract signature upon funding |

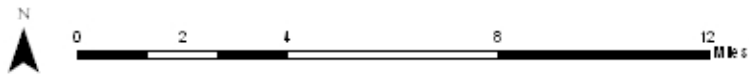
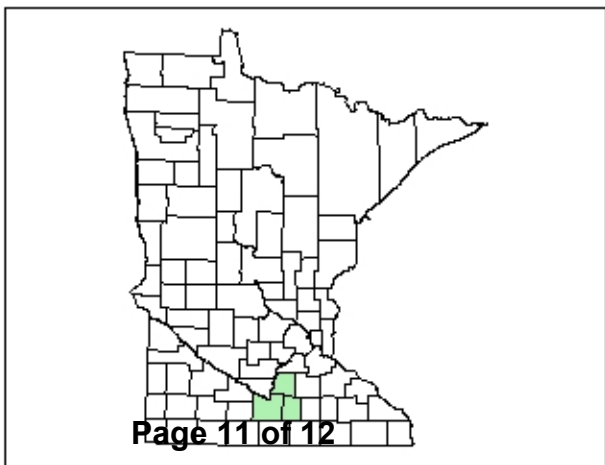
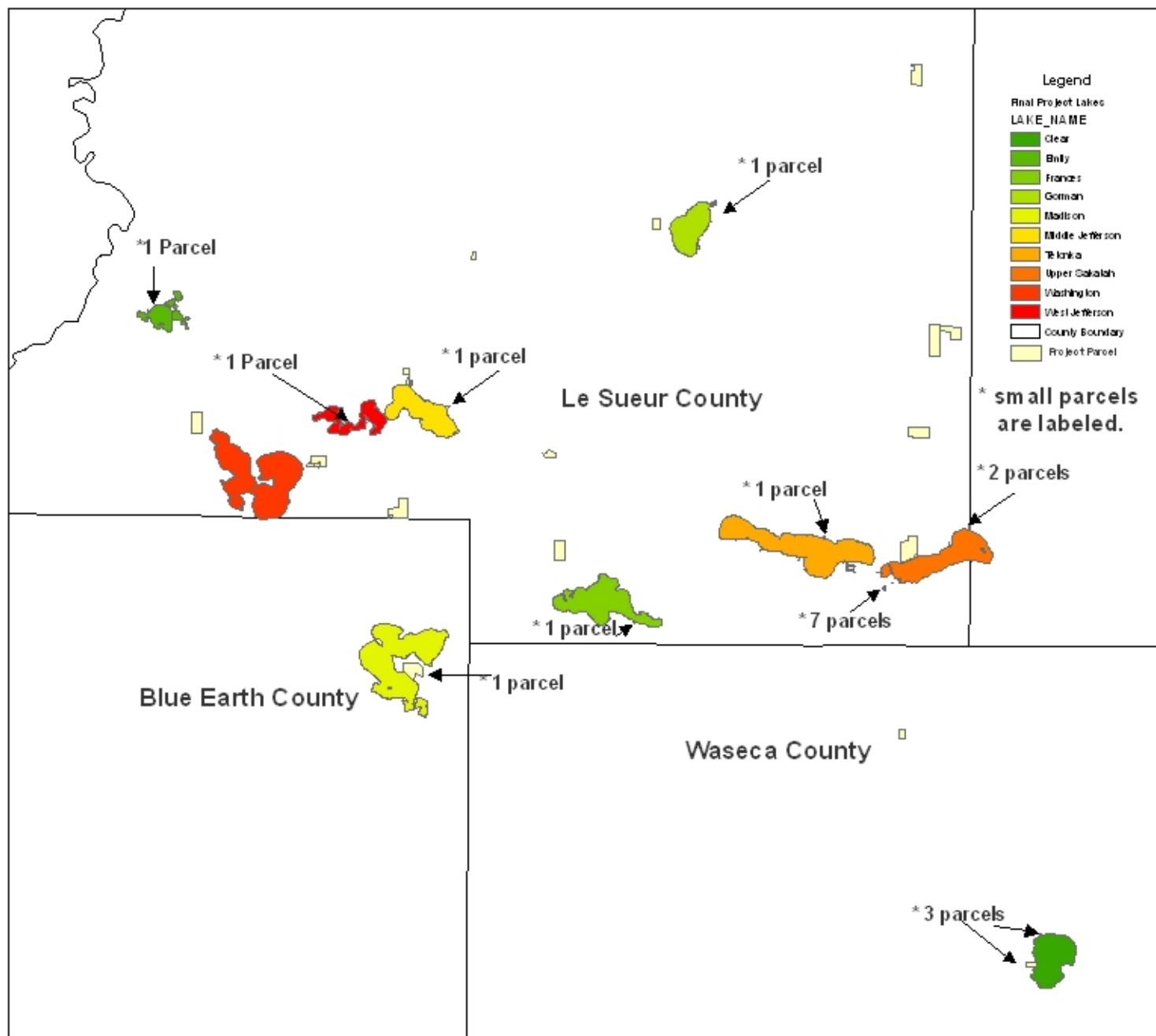
30

| Attachment A: Budget Detail for M.L. 2013 Environment and Natural Resources Trust Fund Projects | | | | | | | | | | | | | |
|--|--|--|--|--------------|---------|--|--------------|---------|--|--------------|---------|--------------|---------------|
| Project Title: <i>Restoring Water Quality to Fourteen Southern Minnesota Lakes</i> | | | | | | | | | | | | | |
| Legal Citation: <i>Fill in your project's legal citation from the appropriation language</i> | | | | | | | | | | | | | |
| Project Manager: <i>Lauren Klement</i> | | | | | | | | | | | | | |
| M.L. 2013 ENRTF Appropriation: \$ 463,000 | | | | | | | | | | | | | |
| Project Length and Completion Date: July 1, 2013 to June 30, 2016 | | | | | | | | | | | | | |
| Date of Update: <i>Fill in the date of report submission</i> | | | | | | | | | | | | | |
| | | | | | | | | | | | | | |
| ENVIRONMENT AND NATURAL RESOURCES TRUST FUND BUDGET | | | Activity 1 Budget | Amount Spent | Balance | Activity 2 Budget | Amount Spent | Balance | Activity 3 Budget | Amount Spent | Balance | TOTAL BUDGET | TOTAL BALANCE |
| BUDGET ITEM | | | <i>Fill in your activity title here.</i> | | | <i>Fill in your activity title here.</i> | | | <i>Fill in your activity title here.</i> | | | | |
| Other: <i>75%/25% cost share on Best Management Practices Installation</i> | | | \$ 395,482.00 | | | | | | | | | | |
| Other: <i>Technical Assistance for Soil and Water Conservation District and County staff for oversight of ag and shoreland projects</i> | | | \$ 67,518.00 | | | | | | | | | | |
| COLUMN TOTAL | | | \$463,000 | | | | | | | | | | |

Restoring Water Quality on Ten Southern Minnesota Lakes

Parcel-based Map

Project 076-D



Map Disclaimer
 * Reasonable efforts have been made by Le Sueur County GIS Department to verify that these maps accurately interpret the source data used in their preparation; however, a degree of error is inherent in all maps, and these maps may contain omissions and errors in scale, resolution, rectification, positional accuracy, development methodology, interpretation of source data and other circumstances.
 *The maps are date specific and are intended for use only at the published scale.
 * These maps should not be used for navigational, engineering, legal or any site-specific use.
 ~Coordinate System: NAD 1983 HARN Adj MN Le Sueur Feet

Map Created by Lauren Klement
 ArcMap 9.3
 September 27, 2012

