

2010 Project Abstract

For the Period Ending June 30, 2012

PROJECT TITLE: Protection of Granite Rock Outcrop Ecosystem

PROJECT MANAGER: Thomas J. Kalahar

AFFILIATION: Renville SWCD

MAILING ADDRESS: 1008 West Lincoln

CITY/STATE/ZIP: Olivia MN 56277

PHONE: 320-523-1559

E-MAIL: Kalahar@yahoo.com

WEBSITE: www.renvilleswcd.com

FUNDING SOURCE: Environment and Natural Resources Trust Fund

LEGAL CITATION: ML 2010, Chap. 362, Sec. 2, Subd. 4e

APPROPRIATION AMOUNT: \$1,800,000

Overall Project Outcome and Results

A total of 748.4 acres of rare and unique Minnesota River Valley landscape were permanently protected and sixteen landowners were paid \$1,741,580 for voluntarily placing perpetual conservation easements on those acres. Five counties participated in the project including Lac qui Parle, Chippewa, Yellow Medicine, Redwood and Renville. Easement applications were scored by resource professional teams and funding was based on those scores.

Soil & Water Conservation District (SWCD) employees saw a need to protect the natural environment and to provide economically viable choices for the landowners. The Minnesota River Valley contains exposed ancient granite rock outcrops that provide unique landscape features and habitat for specialized plant and animal communities rarely found elsewhere in Minnesota. No programs existed that would give landowners a payment if they chose to protect the area from development by mining, overgrazing and other development interests. Rock outcrops are a component of the Minnesota River's riparian zone, and destruction of this unique habitat degrades water quality and wildlife habitat in the Minnesota River and its tributaries. Removal of the rock results in severe degradation and permanent loss of these unique landscape features. The Minnesota River Corridor is easily susceptible to fragmentation because it comprises such a small percentage of the Minnesota River Watershed. Past development activities and mining operations have already fragmented large areas of the fragile Minnesota River Corridor. Demand for aggregate is growing as our population and infrastructure grow. Interest in mining exposed granite rock outcrops in the Minnesota River Valley is high because the rock is readily available and there is no overburden to remove. This encourages the practice of horizontal mining, removing the easiest and most profitable rock, and moving on. Unlike gravel mining operations, there is no reclamation plan possible for replacing this unique landscape feature once it is removed.

Project Results Use and Dissemination

The Renville SWCD website (www.renvilleswcd.com) continues to update the public on the Rock Outcrop projects by posting information & photos in the "News" section of the website. Each SWCD in Minnesota is required to maintain a website. Those websites contain information on available programs and update the public on current topics of interest in the county.

Each SWCD has a unique position within their community to deliver conservation programs. SWCDs are the local "go to" agency for conservation program delivery and the staff are both trusted and respected by local landowners. Each SWCD office will personally contact landowners who have high quality rock outcrop landscapes on their property. This one-on-one contact will be a major source of providing information to the public.

Individual SWCD offices will continue to keep their local press informed on the progress of the program. In November 2009 the West Central Tribune featured a front page story which reported on Mr. Kalahar's

appearance at the Renville County Board work session where he updated the County Board on the status of the project.

2010 Environment and Natural Resources Trust Fund (ENRTF)

Date of Report: December 7, 2012

Final Report

Date of Work Program Approval: Original work program approved June 9, 2010 & Work Program Amendment approved January 3, 2012

Project Completion Date: Approval to spend funds until June 30, 2013 given August 21, 2012.

I. PROJECT TITLE: Protection of Granite Rock Outcrop Ecosystem

Project Manager: Thomas J. Kalahar

Affiliation: Renville SWCD

Mailing Address: 1008 West Lincoln

City / State / Zip: Olivia MN 56277

Telephone Number: 320-523-1559

E-mail Address: Kalahar@yahoo.com

FAX Number: 320-523-2389

Web Site Address: www.renvillewcd.com

Location: Portions of the Minnesota River Valley located in Lac qui Parle, Yellow Medicine, Chippewa, Redwood & Renville Counties.

Total ENRTF Project Budget:	ENRTF Appropriation	\$ 1,800,000
	Minus Amount Spent:	\$ 1,790,379
	Equal Balance:	\$ 9,621

Legal Citation: ML 2010, Chap. 362, Sec. 2, Subd. 4e

Appropriation Language:

\$1,800,000 is from the trust fund to the Board of Water and Soil Resources, in cooperation with the Renville Soil and Water Conservation District, to continue to acquire perpetual easements of unique granite rock outcrops, located in the Upper Minnesota River Valley.

FINAL PROJECT SUMMARY AND RESULTS:

A total of 748.4 acres of rare and unique Minnesota River Valley landscape were permanently protected and sixteen landowners were paid \$1,741,580 for voluntarily placing perpetual conservation easements on those acres. Five counties participated in the project including Lac qui Parle, Chippewa, Yellow Medicine, Redwood and Renville. Easement applications were scored by resource professional teams and funding was based on those scores.

Soil & Water Conservation District (SWCD) employees saw a need to protect the natural environment and to provide economically viable choices for the landowners.

The Minnesota River Valley contains exposed ancient granite rock outcrops that provide unique landscape features and habitat for specialized plant and animal communities rarely found elsewhere in Minnesota. No programs existed that would give landowners a payment if they chose to protect the area from development by mining, overgrazing and other development interests. Rock outcrops are a component of the Minnesota River's riparian zone, and destruction of this unique habitat degrades water quality and wildlife habitat in the Minnesota River and its tributaries. Removal of the rock results in severe degradation and permanent loss of these unique landscape features. The Minnesota River Corridor is easily susceptible to fragmentation because it comprises such a small percentage of the Minnesota River Watershed. Past development activities and mining operations have already fragmented large areas of the fragile Minnesota River Corridor. Demand for aggregate is growing as our population and infrastructure grow. Interest in mining exposed granite rock outcrops in the Minnesota River Valley is high because the rock is readily available and there is no overburden to remove. This encourages the practice of horizontal mining, removing the easiest and most profitable rock, and moving on. Unlike gravel mining operations, there is no reclamation plan possible for replacing this unique landscape feature once it is removed.

IV. OUTLINE OF PROJECT RESULTS:

Result 1: Habitat Protection through Perpetual Easements

Description: The project protected 748.4 acres of rock outcrop complexes within the Minnesota River Corridor and its tributaries. Using several layers of data, including the MN County Biological Survey, this project used a scoring system to identify and protect the highest quality sites along the Minnesota River Corridor within the five counties. Easement applications were prioritized by a local work group comprised of technical experts from local, state, and federal agencies. Sixteen easements were secured through the Reinvest in Minnesota (RIM) conservation easement process. The easements are held by the State of Minnesota working through the Board of Water and Soil Resources (BWSR) and the local Soil & Water Conservation Districts (SWCD). Compensation for easements to willing landowners was determined using the local cropland rates of the RIM easement program. Administration and processing of the easements was done through the BWSR and Renville, Redwood, Chippewa, and Yellow Medicine SWCD staff. The \$24,375 in Deliverable 2, was used to fund easement processing and conservation planning by the local SWCD offices. A maximum of \$7,500/SWCD was allowed.

Protection of Granite Rock Outcrop Ecosystem

Summary Budget Information for Result 1: Trust Fund Budget: \$1,795,890
Amount Spent: \$1,790,379
Balance: \$ 5,511

Deliverable	Completion Date	Budget	Amount Spent
1.Easement Acquisition –16 easements protecting 748.4 acres at the local RIM cropland rate	12/31/2011	\$1,746,415	\$1,741,580
2. Easement processing/admin/conservation planning/practice implementation for funded easements (maximum \$7,500 per SWCD office)	9/30/2012	\$ 24,375	\$24,375
3. Legal fees & title insurance (\$750/easement X 16 easements)	9/30/2012	\$ 16,000	\$15,324
4. BWSR -- Easement processing (\$350/easement X16 easements)	9/30/2012	\$ 5,600	\$5,600
5. Grant Administration (Renville SWCD)	11/30/2012	\$ 3,500	\$3,500

Final Result Status

Deliverable #1: Sixteen easements totaling 748.40 acres were recorded and the landowners paid.

Deliverable #2: All easement processing/administration /conservation planning funds have been disbursed to the participating SWCD offices.

Deliverable #3: Legal fees, title insurance and recording fees are included in this Deliverable. The costs for the final easement were slightly less than estimated leaving \$676 unspent in this Deliverable.

Deliverable #4: The participating SWCD offices got excellent service and assistance from the BWSR Easement team. All easement processing completed at state and local level and funds distributed.

Deliverable #5: Renville County SWCD works with the other SWCD offices and the BWSR office to keep current on easement processing progress & on funding for restorations as well as completing the required reporting.

Result 2: Habitat Protection Invasive Species Removal

Description: A Conservation Plan is developed for each RIM easement. The plan outlines conservation practices, such as removal of invasive species and livestock management, and provides for improvement measures. Habitat maintenance may include rotational grazing systems, fencing, native and non-native invasive species removal (i.e. Red Cedar, Buckthorn, Siberian Elm, & Sumac), prescribed burning

Protection of Granite Rock Outcrop Ecosystem

and in some cases seeding of native species. Restoration activities will begin as easements are recorded and landowners issued easement payment. Individual easement conservation plan practices will be targeted for completion within one year of easement recording. The \$4,110 is a maximum amount to be spent from this grant. Every effort will be made to use funds from Minnesota DNR, the US Fish & Wildlife Service, BWSR, USDA and funds from private conservation groups for practice implementation. If enough of those funds can be secured by the time the work needs to be completed, implementation funds will then be transferred to Result 1, Deliverable 1 to fund acquisition of additional easement acres.

Summary Budget Information for Result 2: Trust Fund Budget: **\$4,110**
Amount Spent: **\$ -0-**
Balance: **\$4,110**

Deliverable	Completion Date	Budget	Spent
1. Conservation Plan Practice implementation	6/30/2012	\$4,110	\$0

Result Completion Date: *June 30, 2012*

Final Result Status

During the summer and fall of 2011, work was completed on several sites. The National Turkey Federation paid \$7,500 for work on an easement in Chippewa County and the State of Minnesota Native Buffer Cost-Share Program paid \$1,730 for work on a site in Yellow Medicine County. USDA EQIP (Environmental Quality Incentive Program) paid \$2,775 for tree removal and \$915 for a burn on a site in Yellow Medicine County. Local SWCD staff continue to work with landowners and other agencies when there are funding needs. The funds budgeted in this category were not needed. It is the role of the SWCD staff to continue to work with easement landowners on maintenance and enhancement of easement sites not only during the easement process but into the future. The SWCD offices serve as a clearinghouse for natural resource funding sources. Staff have the contacts and relationships necessary to seek out and find funding from local, state and federal agencies as well as private organizations.

V. TOTAL TRUST FUND PROJECT BUDGET:

Personnel: Maximum \$27,875

There was \$24,375 budgeted for Easement Specialists to process easements, write conservation plans, work with landowners, contractors and other agency staff on restoration activities. \$30,000/16 easements (15 fully funded and 1 partially funded)=\$1,875/easement. However, no SWCD received more than \$7,500 in

Protection of Granite Rock Outcrop Ecosystem

funding from this category. \$7,500/SWCD is approximately 9% FTE. Easements were funded in all five counties.

\$3,500 was budgeted for Easement Administration by the Project Manager and Renville SWCD staff. This is 4% FTE.

Salaries and benefits are determined by individual Soil & Water Conservation District elected Boards of Supervisors. Therefore, they vary and the percentages given in this plan are average staff costs.

Contracts: \$17,600

Contracts include \$350/easement to the BWSR to process RIM easements for a total of \$5,600 (\$350X16). Also included in the budget item was \$16,000 for attorney fees to do title searches, generate title opinions and for payment of title insurance policies and recording fees. A total of \$15,324 was spent leaving a balance of \$676 unspent.

Equipment/Tools/Supplies: \$0

Acquisition, including easements: \$1,746,415

This amount is based on protecting 748.4 acres using the BWSR RIM cropland rates in the township where the land is located. A total of \$1,741,580.23 was spent leaving \$4,835 unspent.

Travel: \$0

Other (Restoration): \$4,110

Restoration costs are to assist with invasive species removal on two easements totaling 74.8 acres. \$4,110 was the budgeted amount of ENRTF funds for Restoration. Funds have been secured from other sources to complete the work outlined in the easement Conservation Plans that were part of the original easement application package leaving \$4,110 unspent.

TOTAL TRUST FUND PROJECT BUDGET: \$1,800,000

Explanation of Capital Expenditures Greater Than \$3,500: N/A

VI. PROJECT STRATEGY:

A. Project Partners:

Renville SWCD is the lead for grant administration. Throughout the grant period, SWCD staff in Renville, Redwood, Lac qui Parle, Chippewa and Yellow Medicine Counties will work with landowners in their respective county to process easements, as well as develop conservation and restoration plans. The US Fish & Wildlife Service and Minnesota Department of Natural Resources provide staff time for the technical evaluation of easement applications and restoration practices. County Boards of Commissioners along with the Upper and Lower Sioux Indian

Communities have provided letters of support for this project. Each of the five Soil & Water Conservation District Boards of Supervisors have submitted a letter of support and have pledged staff time aimed toward the successful completion of this project.

B. Project Impact and Long-term Strategy:

Protecting the rock outcrops is important to the Dakota people. To degrade/destroy rock outcrops or sacred landscapes is to destroy the Dakota Culture. The Dakota consider the Minnesota River Valley their spiritual home. Their relationship with nature calls for reverence, respect, and humility.

Protection and restoration of rock outcrops will preserve unique landscapes and habitats and benefit the numerous endangered, threatened, and special concern species found in this ecosystem. The rock outcrops, and their associated wetland complexes, are home to the following state and federal rare, threatened, and endangered species (both flora and fauna): **Federal Threatened:** Prairie bush clover. **State Endangered:** Wolf's spikerush, lichen (*Buellia nigra*), Henslow's sparrow. **State Threatened:** Kittentails, Short-pointed umbrella sedge, Dakota skipper, Ottoe skipper, Loggerhead shrike. **State Special Concern:** Water-hyssop, Larger water-starwort, mudwort, Great Plains prickly pear, Clustered broomrape, Five-lined skink, Bald eagle, Pawnee skipper, Powesheik skipper, Regal fritillary. **Species of Greatest Conservation Need:** Upland sandpiper. **Non-listed/tracked species:** Carolina foxtail, Eastern fox snake, Three-stamened waterwort, Little barley, Virginia forget-me-not, Mousetail.

Conservation plans may require the removal of native and non-native invasive species, such as Red Cedar, Buckthorn, Siberian Elm and Sumac, and intensive management and will encourage the establishment and the proliferation of specialized plant and animal communities rarely found elsewhere in Minnesota. Mining and intensive grazing disturbance leave the land susceptible to increased soil and mineral erosion and increased nutrient loading and invasion by invasive species. This project will protect the water quality of the Minnesota River, its tributaries, and rock outcrop wetlands, by preventing mining and unmanaged grazing on rock outcrops. The protection of the rock outcrop associated wetlands from mining, development, and agricultural production will insure that the inherent benefits of these existing wetlands, such as groundwater recharge and reduced flooding impacts, are perpetuated.

In 2007 the Environment and Natural Resource Trust Fund provided the initial \$563,000 to protect Granite Rock Outcrops and Associated Wetlands in Redwood and Renville Counties. A total of 212.4 acres is enrolled into four perpetual RIM Easements as a result of that grant.

In 2009 the Environment and Natural Resource Trust Fund is providing an additional \$1,500,000 for the project. A total of 30 applications totaling 1,481.1 acres with a potential easement cost of \$3,529,973.80 were submitted by landowners in the five participating counties. A team of natural resource professionals visited each site

and scored the applications using ecological considerations such as proximity to other natural features, proximity to bodies of water, benefits to endangered, threatened or special concern species, the condition of the site, restoration potential, biodiversity, potential to connect or expand other protected areas, and the size of the application area. In addition to the ecological considerations, scoring took into account the potential for resource loss as well as several societal benefits including the aesthetic value, and potential for public education. Fourteen applications totaling 540.8 acres will be funded using Subd. 4(h).

The 2010 grant will provide for funding of the next 12 highest priority applications protecting an additional 702.8 acres in four of the five eligible counties along the Minnesota River. Prescribed grazing, haying, and prescribed burning will all be essential tools in the future management of this unique landscape.

C. Other Funds Spent during the Project Period:

Minnesota DNR & US Fish & Wildlife Service provide in-kind for staff to do site visits of all applications and score and prioritize sites for acceptance & funding. In addition there will be a total of \$35,510 provided by the BWSR native Buffer Cost-Share Program, Minnesota DNR and the US Fish & Wildlife Service to assist with the cost of invasive species removal and other conservation practice implementation. Staff will continue to pursue additional funding for practice implementation.

D. Spending History: \$563,000.00 has been spent on this project since July 1, 2007 under ML 2007, Chap. 30, Sec 2, Subd. 5(b). \$517,410.72 was spent to fund four easements protecting 212.4 acres. \$6,540.00 was spent for professional services including \$350/easement to BWSR for RIM easement development & processing, attorney fees for title searches & title opinions as well as payment for title insurance policies. \$6,049.28 of grant funds were spent for Habitat Restoration. In addition there was \$31,440.72 obtained from other sources for Habitat Restoration. Those sources included US Fish & Wildlife Service, the Minnesota DNR from both Wildlife & Ecological Resources Divisions, the State of Minnesota Native Buffer Cost-Share program and the USDA Natural Resource Conservation Service EQIP program. There was a total of \$33,000 in Personnel costs for this project which was disseminated to the Renville & Redwood SWCD offices.

The \$1,272,00 in easement payment funds from ML 2009 Chap. 143, Sec. 2, Subd. 4(h) have been encumbered and are funding fourteen applications for a total of 540.8 acres. Applications have been forwarded to the Board of Water and Soil Resources for easement processing. After easements have been recorded, work can begin on practice implementation.

VII. DISSEMINATION: The Renville SWCD website (www.renvilleswcd.com) continues to update the public on the Rock Outcrop projects by posting information & photos in the "News" section of the website. Each SWCD in Minnesota is required to maintain a website. Those websites contain information on available programs and update the public on current topics of interest in the county.

Each SWCD has a unique position within their community to deliver conservation programs. SWCDs are the local “go to” agency for conservation program delivery and the staff are both trusted and respected by local landowners. Each SWCD office will personally contact landowners who have high quality rock outcrop landscapes on their property. This one-on-one contact will be a major source of providing information to the public.

Individual SWCD offices will continue to keep their local press informed on the progress of the program. In November 2009 the West Central Tribune featured a front page story which reported on Mr. Kalahar’s appearance at the Renville County Board work session where he updated the County Board on the status of the project.

VIII. REPORTING REQUIREMENTS: Periodic work program progress reports will be submitted not later than December 31, 2010, June 30, 2011, and December 31, 2011. A final work program report and associated products will be submitted between June 30 and December 31, 2012 as requested by the LCCMR.

IX. RESEARCH PROJECTS:

Attachment A: Final Budget Detail for 2010 Projects								
Project Title: Protection of Granite Rock Outcrop Ecosystem								
Project Manager Name: Thomas J. Kalahar								
ENRTF Appropriation: \$1,800,000								
2010 Trust Fund Budget	<u>Result 1 Budget</u>	Amount Spent	Final Balance	<u>Result 2 Budget</u>	Amount Spent	Final Balance	TOTAL BUDGET	TOTAL BALANCE
BUDGET ITEM								
PERSONNEL: wages and benefits		\$0	\$0				\$0	\$0
\$2,500/easement for easement processing, conservation plans, working with landowners, contractors and other agencies on practice implementation--maximum per SWCD of \$7,500 (9% FTE)	\$24,375	\$24,375	\$0				\$24,375	\$0
\$3,500 to Renville SWCD for grant management (4% FTE).	\$3,500	\$3,500	\$0				\$3,500	\$0
Contracts								
Professional/technical BWSR for Easement development & processing (\$350/easement X 16)	\$5,600	\$5,600	\$0				\$5,600	\$0
Easement acquisition 753.1 acres. Compensation based on local RIM rates	\$1,746,415	\$1,741,580	\$4,835				\$1,746,415	\$4,835
Professional Services for Acq. (Attorney fees for title searches, title opinions and title insurance policies: \$1,000/easement X 16 easements)	\$16,000	\$15,324	\$676				\$16,000	\$676
Other: Native & non-native invasive species removal & prescribed burning for two easements that total 74.8 acres	\$0		\$0	\$4,110	\$0	\$4,110	\$4,110	\$4,110
COLUMN TOTAL	\$1,795,890	\$1,790,379	\$5,511	\$4,110	\$0	\$4,110	\$1,800,000	\$9,621
\\SHARE\WORKFILES\2010\2010 WP\ Subd 4 - Land Habitat - Red4a - Rock Outcrops\2010-12-10-FINAL-Attach A.xlsx								

Granite Rock Outcrop Applications
2009 & 2010 ENRTF Grants

Landowner	County	Twp/Sec	Acres	Score	Land Pymt	Year	Status
Available funds							
Borgerson	LQP	Agassiz 10	45.10	175	\$ 97,781.31	2009-1	complete
Dahmes	Redwood	Delhi 11	21.60	165	\$ 49,533.12	2009-2	complete
Kern	Redwood	Sherman 23/24	132.50	165	\$ 381,600.00	2009-3	complete
Thomson	LQP	LSN 20	30.00	160	\$ 62,667.00	2009-4	complete
Peterson	Yellow Medicine	ESR 29 & 30	18.50	160	\$ 42,624.00	2009-5	complete
Tjaden	Yellow Medicine	MF 10	26.30	150	\$ 59,411.70	2009-6	complete
Josh Haen East	Renville	BF 18	0.00	140	\$ -	cancel ap	cancel
Gaasch West	Renville	BC 31	3.70	140	\$ 9,886.77	2009-7	complete
Essame	Yellow Medicine	SA 12	43.10	140	\$ 97,330.50	2009-8	complete
Haas Trust West	Redwood	HO 28	50.00	140	\$ 92,520.00	2009-10	complete
Stegner	Redwood	SF 24	46.40	135	\$ 109,954.08	2009-11	complete
Enesvedt	Renville	SSH 16	27.60	135	\$ 73,998.36	2009-12	complete
Skalbeck	Renville	SSH 16	16.60	135	\$ 44,506.26	2009-13	complete
Skjefte	Yellow Medicine	MF 4 & 5	40.40	135	\$ 91,263.60	2009-14	complete
Smith	Redwood	SF 7	177.90	135	\$ 421,569.63	2010-1	complete
Sebring Trust	Yellow Medicine	MF 10	44.50	135	\$ 100,525.50	2010-2	complete
Red Cedar of YM Cty	Redwood	SF 18	79.90	130	\$ 189,339.03	2010-3	complete
Haas Trust East	Redwood	PX	53.90	130	\$ 143,126.20	2010-4	complete
Mauer/Kodet	Redwood	PX	13.00	130	\$ 24,055.20	2010-5	complete
Lawrence Muetzel	Renville	LF 2	15.80	125	\$ 45,248.04	2010-6	complete
Almich	Yellow Medicine	MF 3 & 4	43.60	125	\$ 98,492.40	2010-7	complete
Jensen	Renville	BF 18	6.30	125	\$ 16,834.23	2010-8	complete
Tufto	Redwood	SF 24	20.00	120	\$ 47,394.00	2010-9	complete
Tjosvold	Chippewa	GF 28	35.10	120	\$ 86,714.55	2010-10	complete
Peterson Family Trust	Chippewa	GF 28	39.70	120	\$ 98,078.85	2010-11	complete
Ross	Yellow Medicine	MF 2	40.90	120	\$ 92,393.10	2010-12	complete
Opdahl / Burgeson	Yellow Medicine	MF 2 & 11	67.90	120	\$ 153,386.10	2010-13	complete
Josh Haen West	Renville	BF 18	0.00	115	\$ -	cancel ap	cancel
Dirlam	Redwood	Delhi 4	6.20	110	\$ 14,217.84		
Kollen	Yellow Medicine	ESR 32	36.50	105	\$ 21,327.30		
Huseby	Redwood	SF 18	9.00	105	\$ 84,096.00		
Bakken	Yellow Medicine	MF 1, 2, 12	99.00	100	\$ 223,641.00		
Gaasch East	Renville	BC 36	13.10	95	\$ 44,891.28		
Hayes	Renville	LF 3	20.00	95	\$ 57,275.00		
Dahmes South	Redwood	Delhi 11	17.40	85	\$ 39,901.68		
Clark	Chippewa	Sparta 28	21.50	50	\$ 52,380.45		
Scored after 2010 grant							
Roden	Yellow Medicine	MF 11 & 2	61.00	175	\$ 137,799.00	2010-14	complete
Malecha	Renville	BF 20	30.70	165	\$ 82,033.47	2009-15	complete
Baker	Yellow Medicine	MF 4 & 5	13.50	145	\$ 30,496.50	2010-15	complete
Borgerson	Lac qui Parle		0.00	185	\$ -	2009 cancel	cancel
Larson	Lac qui Parle		28.00	145	\$ 60,704.00	2009-16	complete
Ross	Yellow Medicine		35.40	145	\$ 80,127.90	both**	complete
Forkrud	Renville	LSH 22	38.80	110	\$ 144,491.20		
Monson, Andrew	Yellow Medicine		28.80	90	\$ 66,355.20		
Total Applications			1,599.20		\$ 3,869,971.35		

LCCMR Granite Rock Outcrop Grant Program

2009 Grant Funds		2010 Grant		
Funded Acres	560.50	Funded Acres	748.40	
Total Easement funding	\$ 1,355,814.17	Easement Funds	1,765,580.23	\$ 1,741,580.23
Total funded acres 2009 & 2010 Grants		1,308.90	Total funded 2009 & 2010	\$ 3,121,394.40
\$3,181,815 total budgeted for easements in 2009 & 2010 grants (after 12/31/2011 revision request for 2009 grant)				

**NOTE: The Ross easement acres and cost are included in the 2010 totals. The easement will in fact use \$24,000 of 2009 funds and \$56,127.90 from 2010 funds therrefore exhibit A for .
2009 final report will show \$1,379,814 spent & 2010 will show \$1,741,580

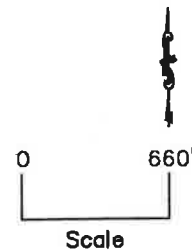
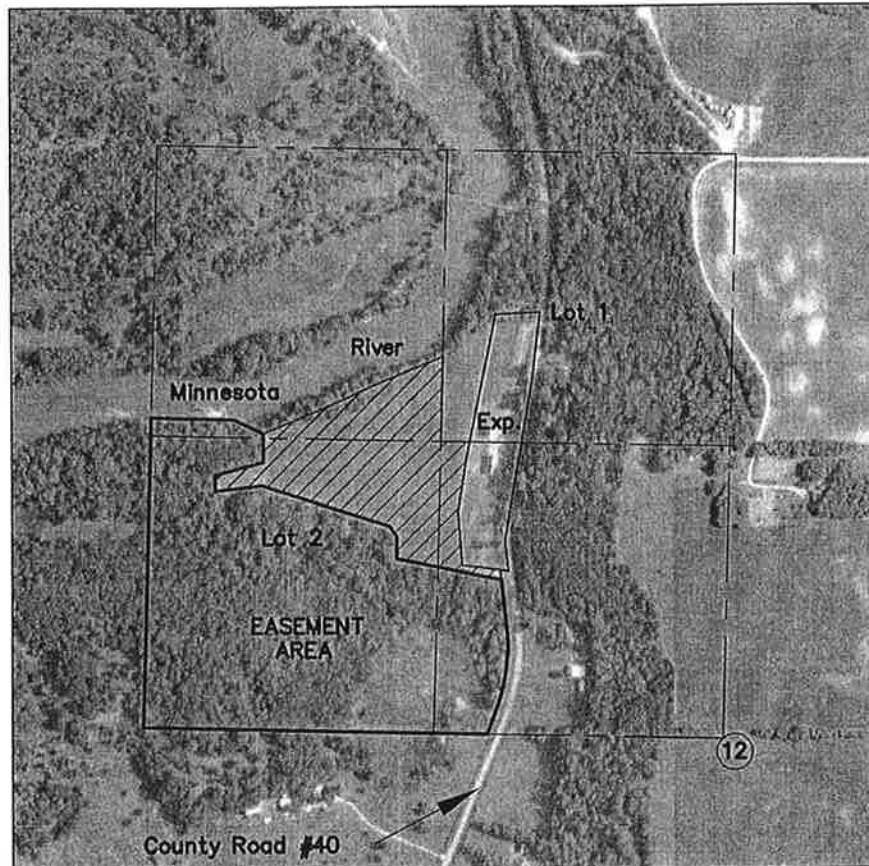
Easement I.D. No: 12-01-10-07

Map 1 of 1

STATE OF MINNESOTA
BOARD OF WATER AND SOIL RESOURCES
CONSERVATION EASEMENT
EXHIBIT 'A'

This map delineates the easement area(s) referred to in the attached easement conveyance. *This is not a legal survey, and not intended for use as a survey plat.*

Section 12 T. 115 N., R. 39 W., Chippewa County








Prepared By:

Board of Water and Soil Resources

Dated:

November 12th, 2010

LEGEND

-  Center of Section
-  Boundary of Described Lands
-  Lands Included in Easement
-  Lands Not Included In Easement
-  Section/Quarter/Sixteenth Line

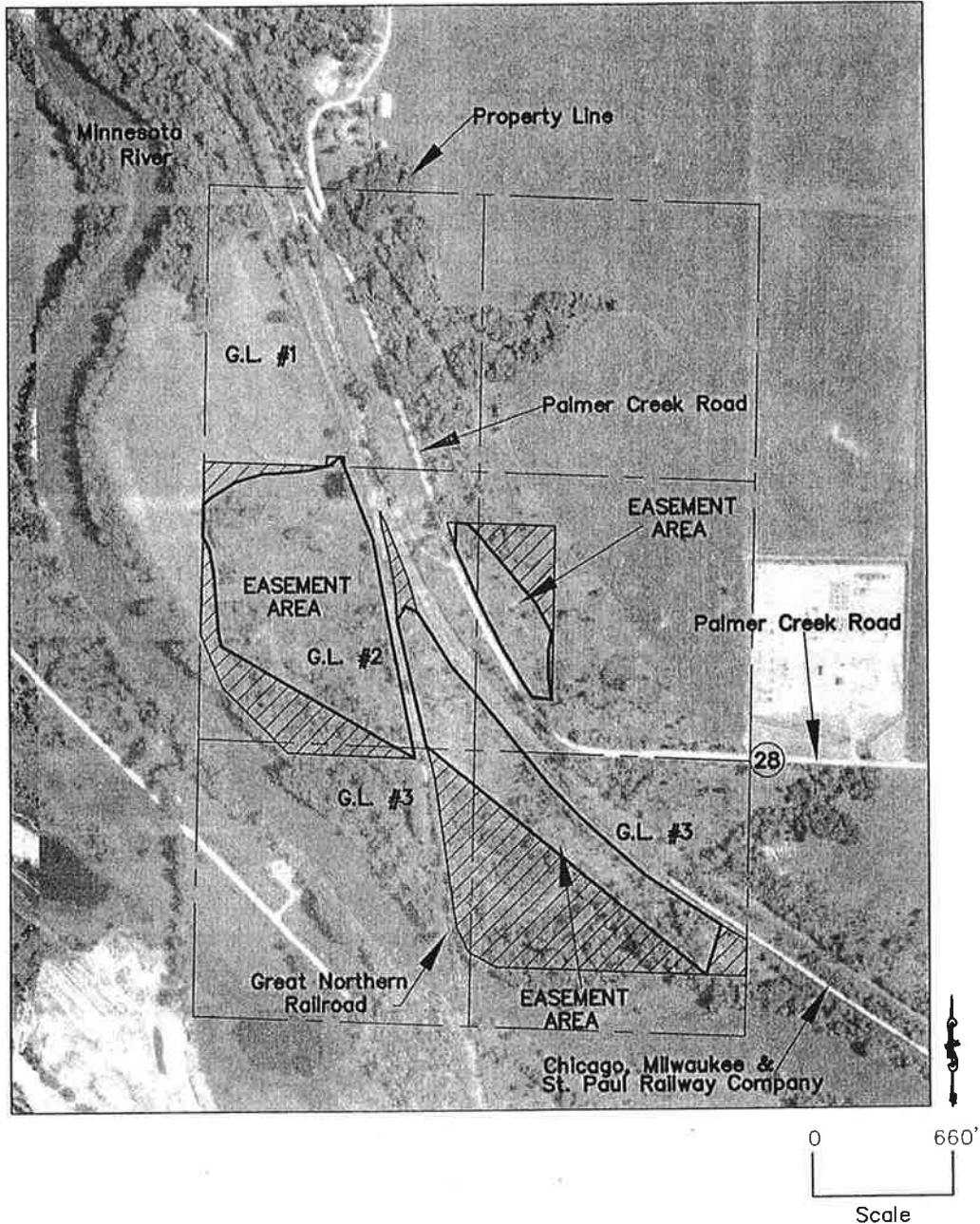
Easement I.D. No: 12-02-10-07

Map 1 of 1

STATE OF MINNESOTA
BOARD OF WATER AND SOIL RESOURCES
CONSERVATION EASEMENT
EXHIBIT 'A'

This map delineates the easement area(s) referred to in the attached easement conveyance. *This is not a legal survey, and not intended for use as a survey plat.*

Section 28 T. 116 N., R. 39 W., Chippewa County



Prepared By:

Board of Water and Soil Resources

Dated:

December 16th, 2010

LEGEND



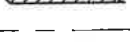
Center of Section



Boundary of Described Lands



Lands Included in Easement



Lands Not Included in Easement

Section/Quarter/Sixteenth Line

Haas Trust

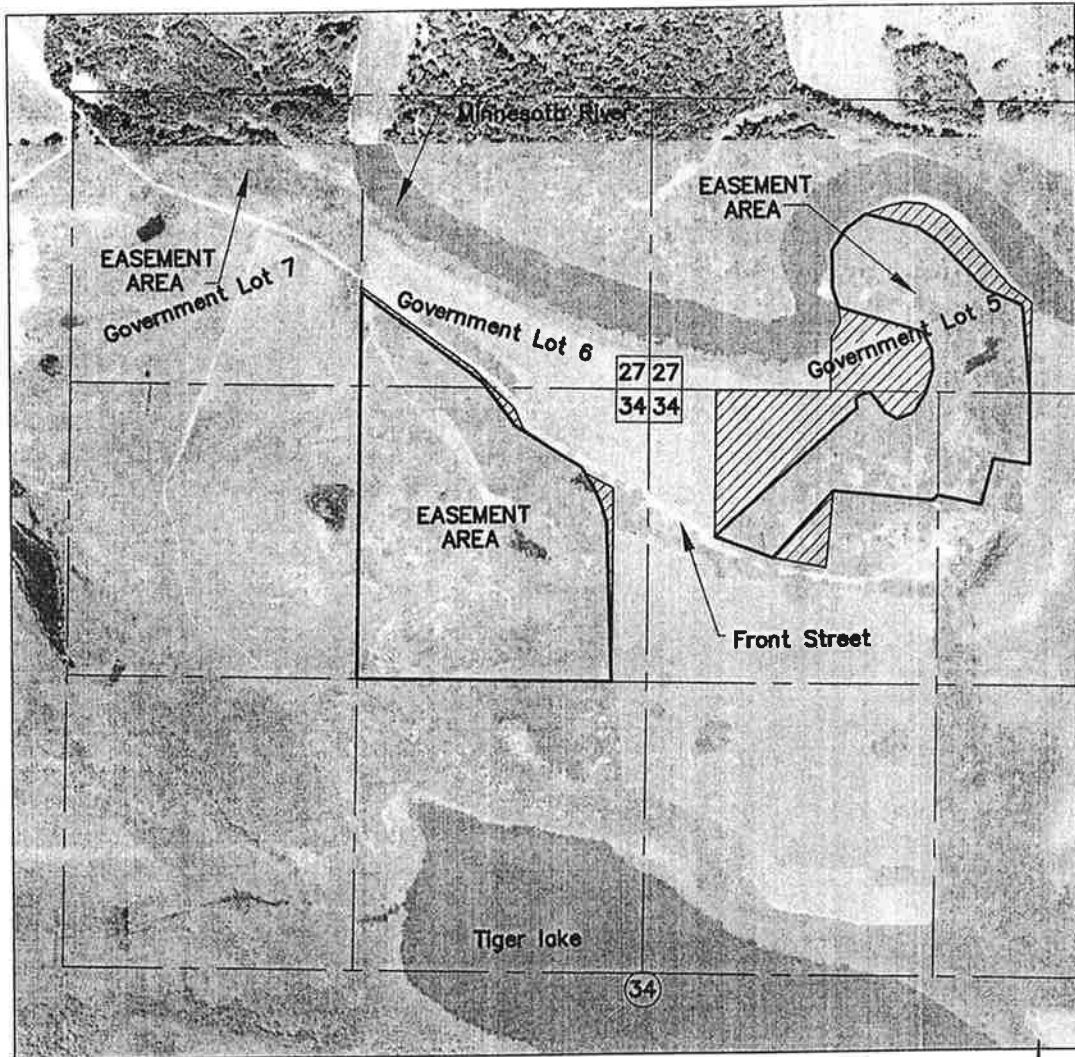
Easement I.D. No: 64-03-10-07

Map 1 of 1

STATE OF MINNESOTA
BOARD OF WATER AND SOIL RESOURCES
CONSERVATION EASEMENT
EXHIBIT 'A'

This map delineates the easement area(s) referred to in the attached easement conveyance. *This is not a legal survey, and not intended for use as a survey plat.*

Section 27/34 T. 113 N., R. 35 W., Redwood County



Prepared By:

Board of Water and Soil Resources

Dated:

December 14, 2010

LEGEND



Center of Section



Boundary of Described Lands

Lands Included in Easement

Lands Not Included in Easement

Section/Quarter/Sixteenth Line

Mauer/Kodet

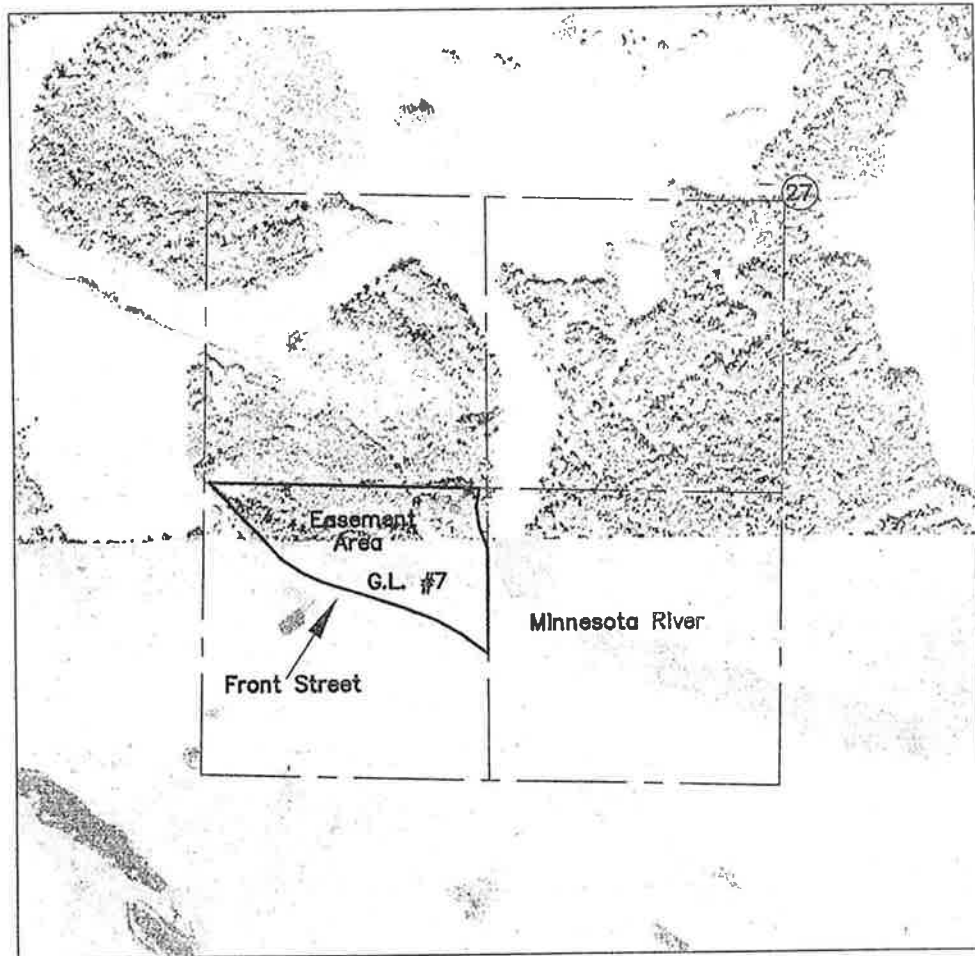
Easement I.D. No: 64-05-10-07

Map 1 of 1

STATE OF MINNESOTA
BOARD OF WATER AND SOIL RESOURCES
CONSERVATION EASEMENT
EXHIBIT 'A'

This map delineates the easement area(s) referred to in the attached easement conveyance. *This is not a legal survey, and not intended for use as a survey plat.*

Section 27 T. 113 N., R. 35 W., Redwood County



Prepared By:

Board of Water and Soil Resources

Dated:

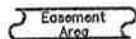
March 16th, 2011

LEGEND

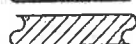


Center of Section

Boundary of Described Lands



Lands Included in Easement



Lands Not Included in Easement

Section/Quarter/Sixteenth Line

Red Cedar

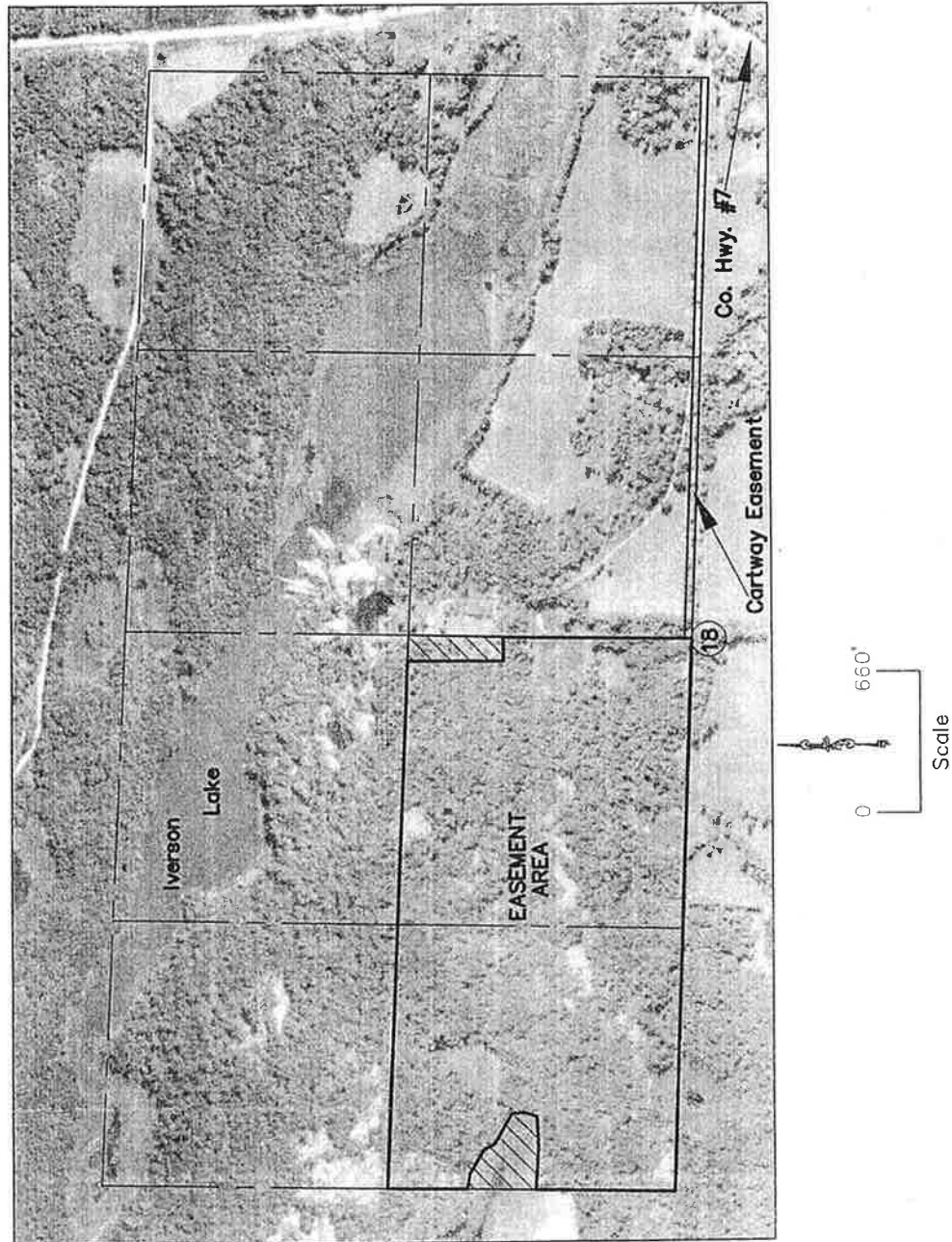
Easement I.D. No: 64-02-10-07

Map 1 of 1

STATE OF MINNESOTA
BOARD OF WATER AND SOIL RESOURCES
CONSERVATION EASEMENT
EXHIBIT 'A'

This map delineates the easement area(s) referred to in the attached easement conveyance. *This is not a legal survey, and not intended for use as a survey plat.*

Section 18 T. 114 N., R. 37 W., Redwood County



Prepared By:

Board of Water and Soil Resources

Dated:

November 29th, 2010

LEGEND



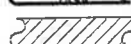
Center of Section



Boundary of Described Lands



Lands Included in Easement



Lands Not Included in Easement

--- Section/Quarter/Sixteenth Line

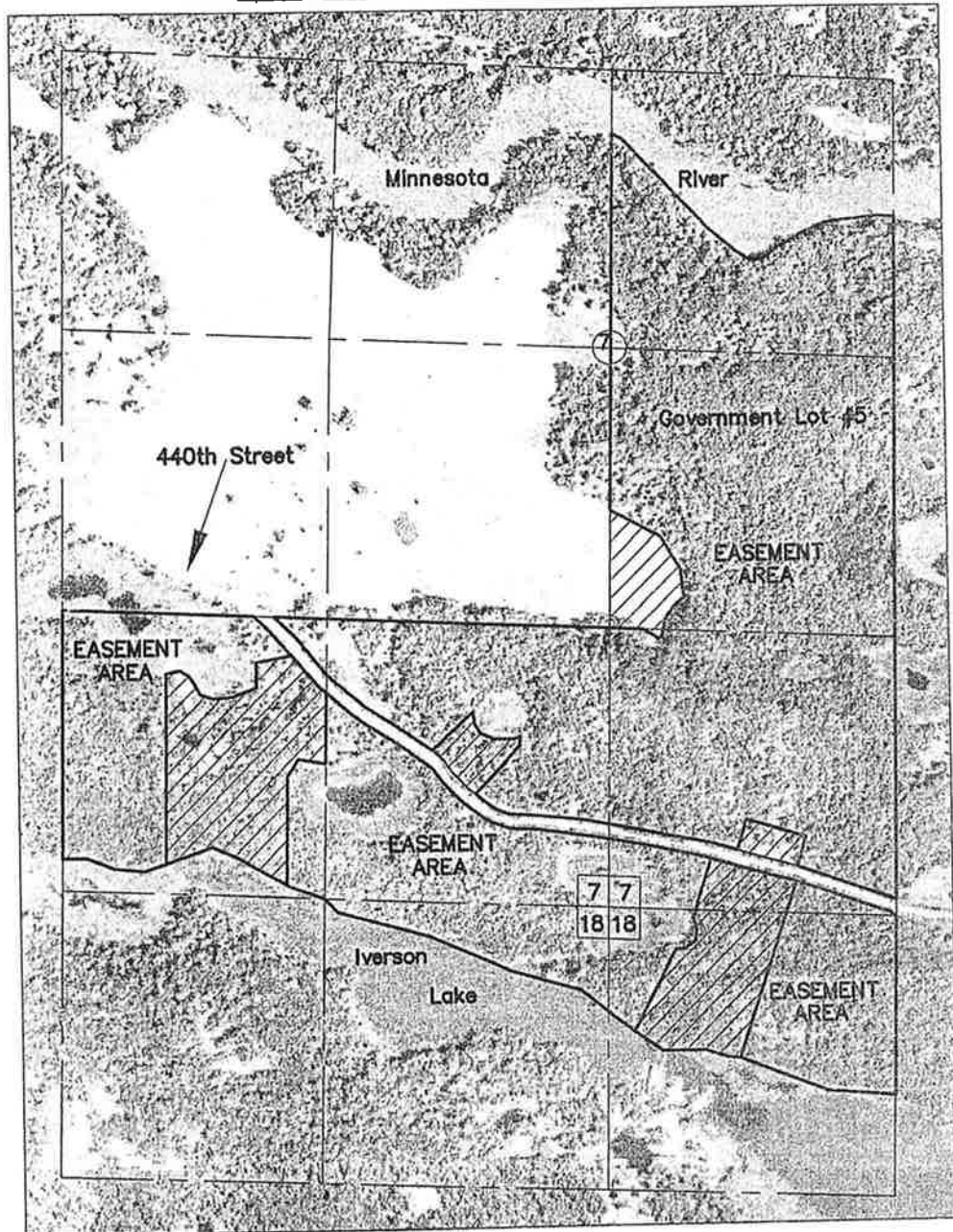
Smith

Easement I.D. No: 64-01-10-07
Map 1 of 1

STATE OF MINNESOTA
BOARD OF WATER AND SOIL RESOURCES
CONSERVATION EASEMENT
EXHIBIT 'A'

This map delineates the easement area(s) referred to in the attached easement conveyance. *This is not a legal survey, and not intended for use as a survey plat.*

Section 7/18 T. 114 N., R. 37 W., Redwood County



Prepared By:

Board of Water and Soil Resources

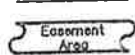
Dated:

August 31st, 2010

LEGEND



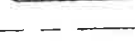
Center of Section



Boundary of Described Lands



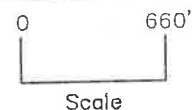
Lands Included in Easement



Lands Not Included in Easement



Section/Quarter/Sixteenth Line



Tufto

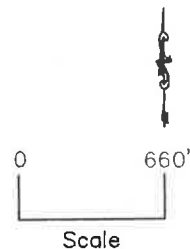
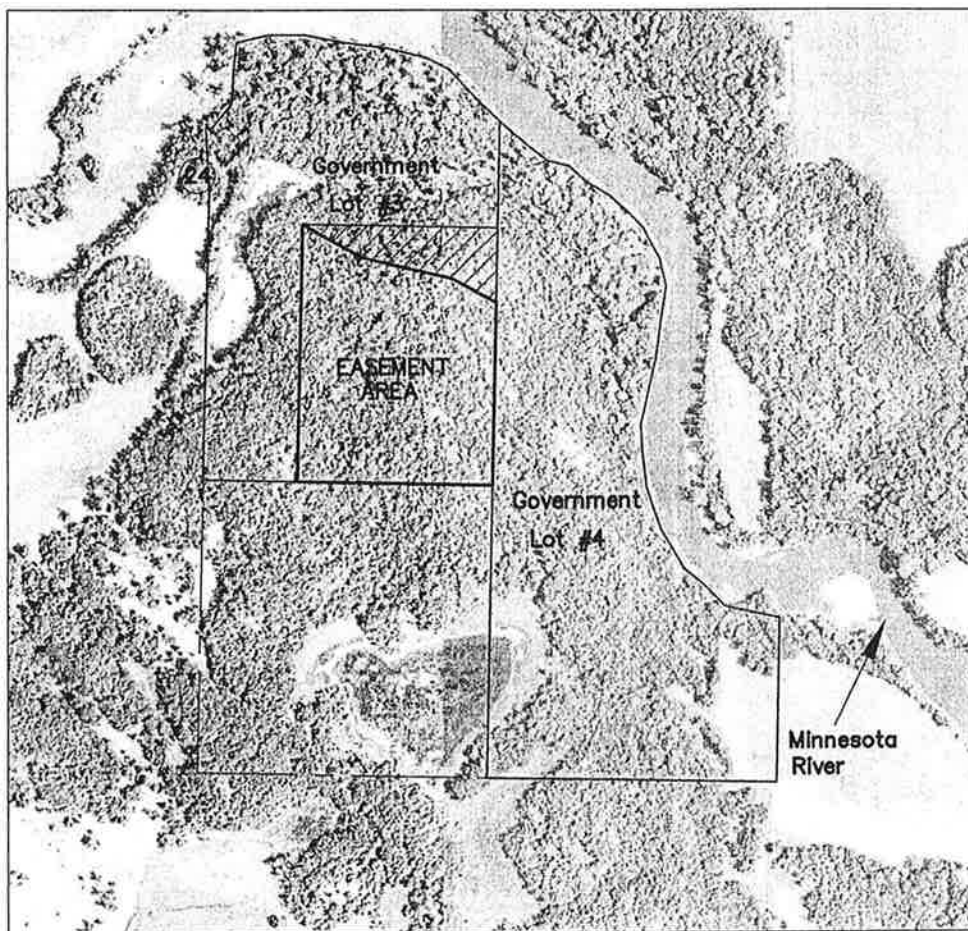
Easement I.D. No: 64-04-10-07

Map 1 of 1

STATE OF MINNESOTA
BOARD OF WATER AND SOIL RESOURCES
CONSERVATION EASEMENT
EXHIBIT 'A'

This map delineates the easement area(s) referred to in the attached easement conveyance. *This is not a legal survey, and not intended for use as a survey plat.*

Section 24 T. 114 N., R. 37 W., Redwood County



Prepared By:

Board of Water and Soil Resources

Dated:

November 8th, 2010

LEGEND



Center of Section



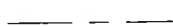
Boundary of Described Lands



Lands Included in Easement



Lands Not Included in Easement

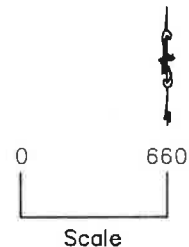
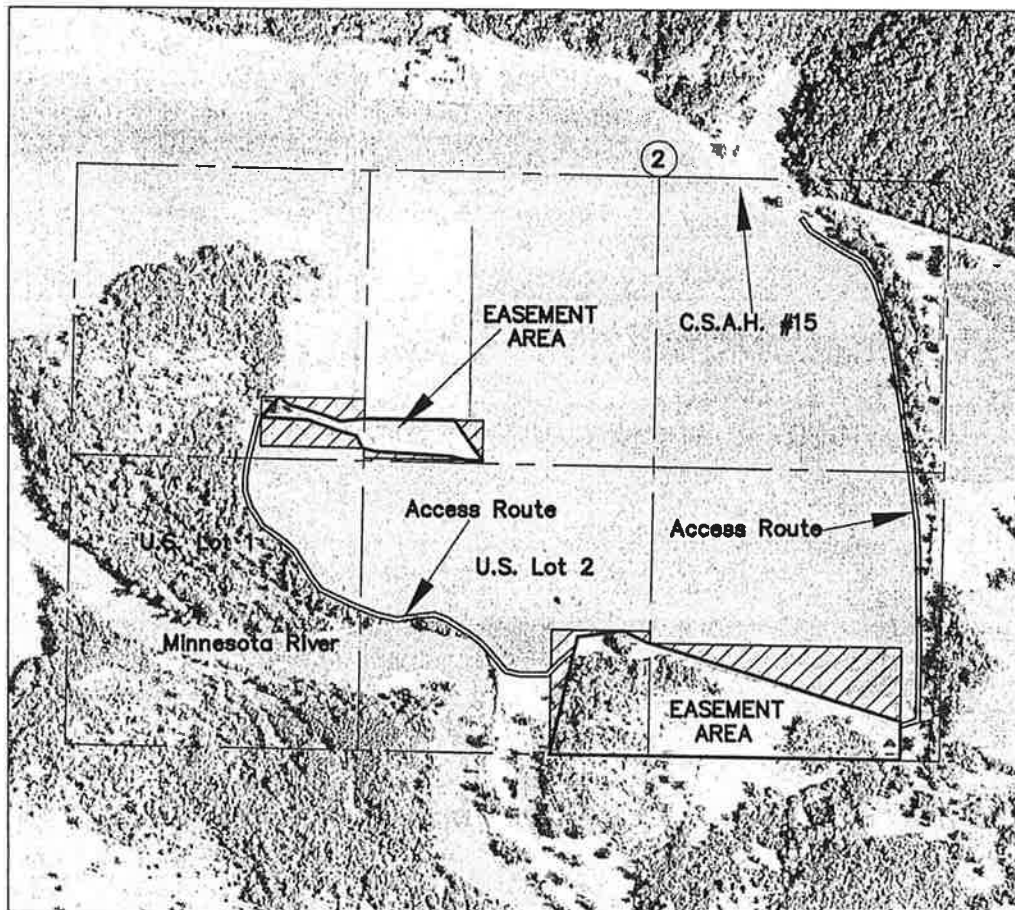


Section/Quarter/Sixteenth Line

STATE OF MINNESOTA
BOARD OF WATER AND SOIL RESOURCES
CONSERVATION EASEMENT
EXHIBIT 'A'

This map delineates the easement area(s) referred to in the attached easement conveyance. *This is not a legal survey, and not intended for use as a survey plat.*

Section 2 T. 113 N., R. 36 W., Renville County



Prepared By:

Board of Water and Soil Resources

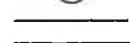
Dated:

August 2nd, 2010

LEGEND



Center of Section



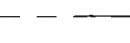
Boundary of Described Lands



Lands Included in Easement



Lands Not Included in Easement



Section/Quarter/Sixteenth Line

DC# A363103

DOC# A358458

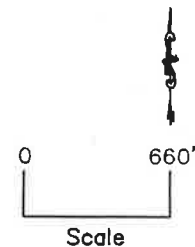
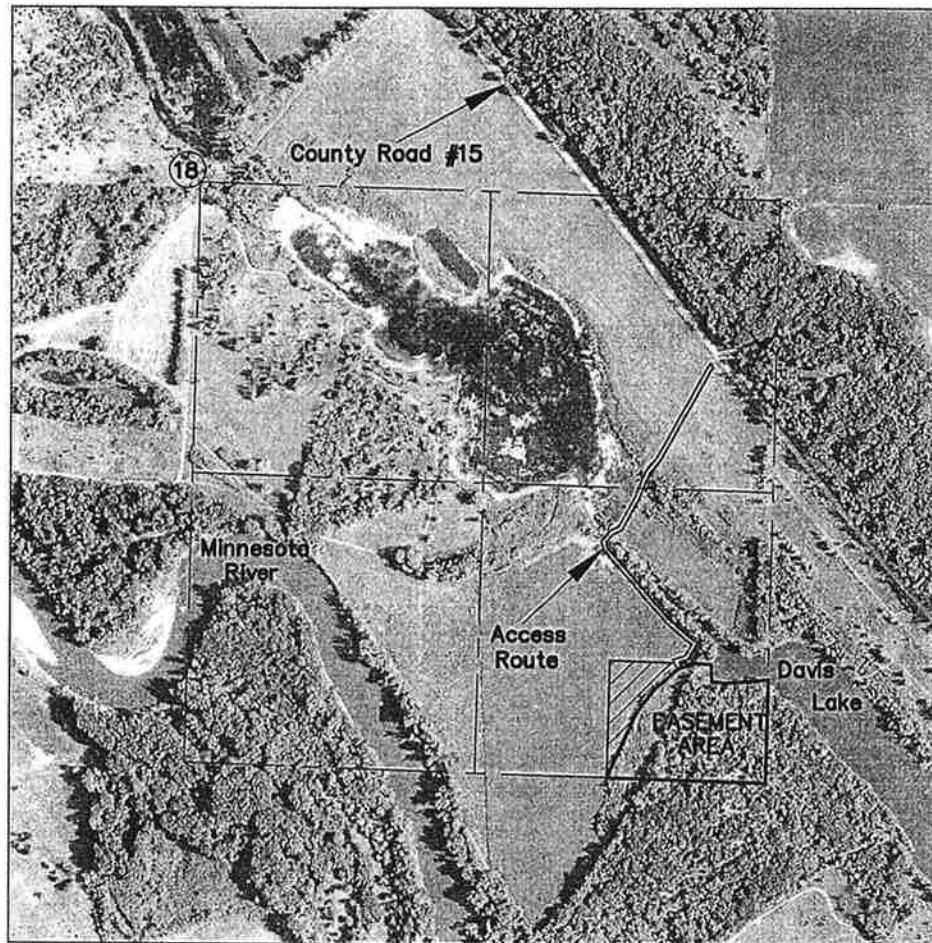
Easement I.D. No: 65-02-10-07

Map 1 of 1

STATE OF MINNESOTA
BOARD OF WATER AND SOIL RESOURCES
CONSERVATION EASEMENT
EXHIBIT 'A'

This map delineates the easement area(s) referred to in the attached easement conveyance. *This is not a legal survey, and not intended for use as a survey plat.*

Section 18 T. 113 N., R. 35 W., Renville County



Prepared By:

Board of Water and Soil Resources

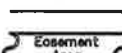
Dated:

November 10th, 2010

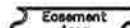
LEGEND



Center of Section



Boundary of Described Lands



Lands Included in Easement



Lands Not Included in Easement

--- Section/Quarter/Sixteenth Line

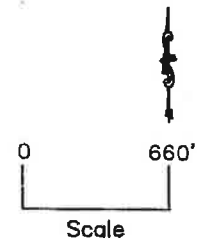
Easement I.D. No: 87-02-10-07

Map 1 of 1

STATE OF MINNESOTA
BOARD OF WATER AND SOIL RESOURCES
CONSERVATION EASEMENT
EXHIBIT 'A'

This map delineates the easement area(s) referred to in the attached easement conveyance. *This is not a legal survey, and not intended for use as a survey plat.*

Section 3/4 T. 115 N., R. 39 W., Yellow Medicine County



Prepared By:

Board of Water and Soil Resources

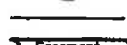
Dated:

November 23rd, 2010

LEGEND



Center of Section



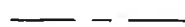
Boundary of Described Lands



Lands Included in Easement



Lands Not Included in Easement



Section/Quarter/Sixteenth Line

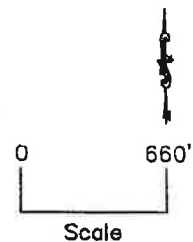
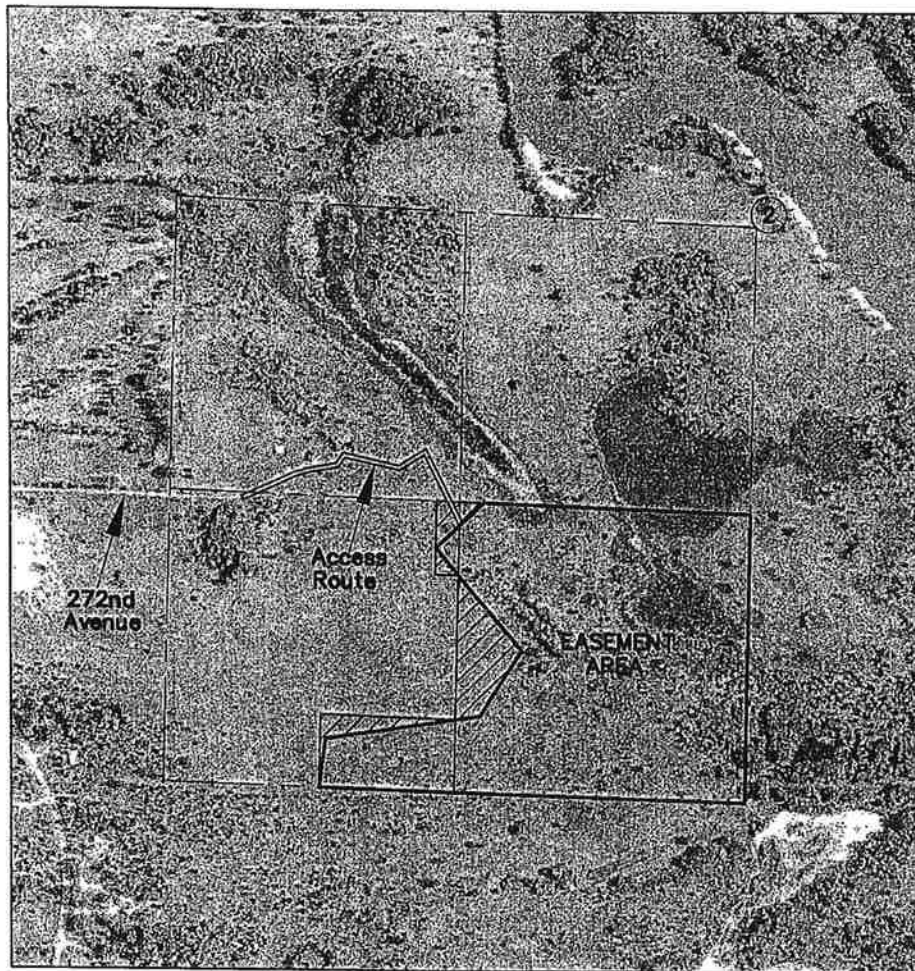
Easement I.D. No: 87-03-10-07

Map 1 of 1

STATE OF MINNESOTA
BOARD OF WATER AND SOIL RESOURCES
CONSERVATION EASEMENT
EXHIBIT 'A'

This map delineates the easement area(s) referred to in the attached easement conveyance. *This is not a legal survey, and not intended for use as a survey plat.*

Section 2 T. 115 N., R. 39 W., Yellow Medicine County



Prepared By:

Board of Water and Soil Resources

Dated:

August 20th, 2010

LEGEND



Center of Section



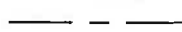
Boundary of Described Lands



Lands Included in Easement



Lands Not Included in Easement



Section/Quarter/Sixteenth Line

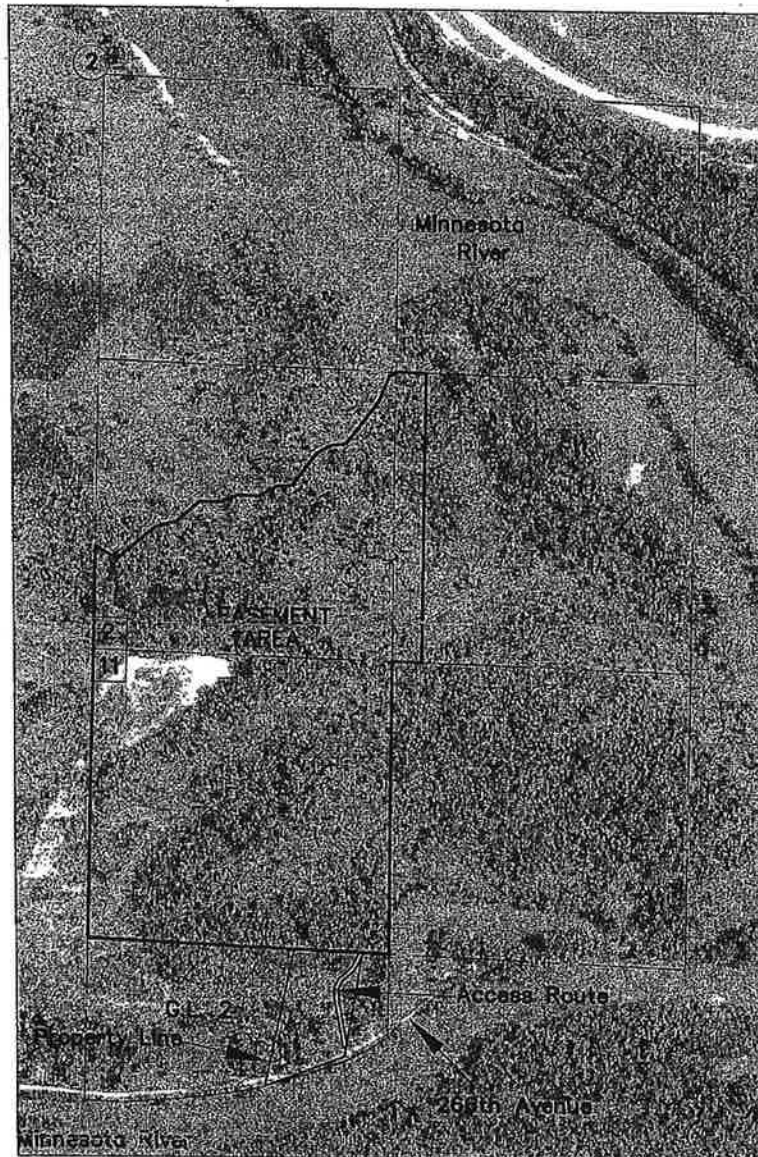
Easement I.D. No: 87-04-10-07

Map 1 of 1

STATE OF MINNESOTA
BOARD OF WATER AND SOIL RESOURCES
CONSERVATION EASEMENT
EXHIBIT 'A'

This map delineates the easement area(s) referred to in the attached easement conveyance. *This is not a legal survey, and not intended for use as a survey plat.*

Section 2/11 T. 115 N., R. 39 W., Yellow Medicine County



Prepared By:

Board of Water and Soil Resources

Dated:

August 5th, 2010

LEGEND



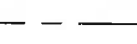
Center of Section



Boundary of Described Lands



Lands Included in Easement



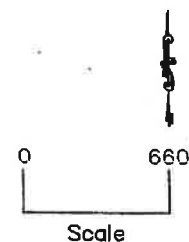
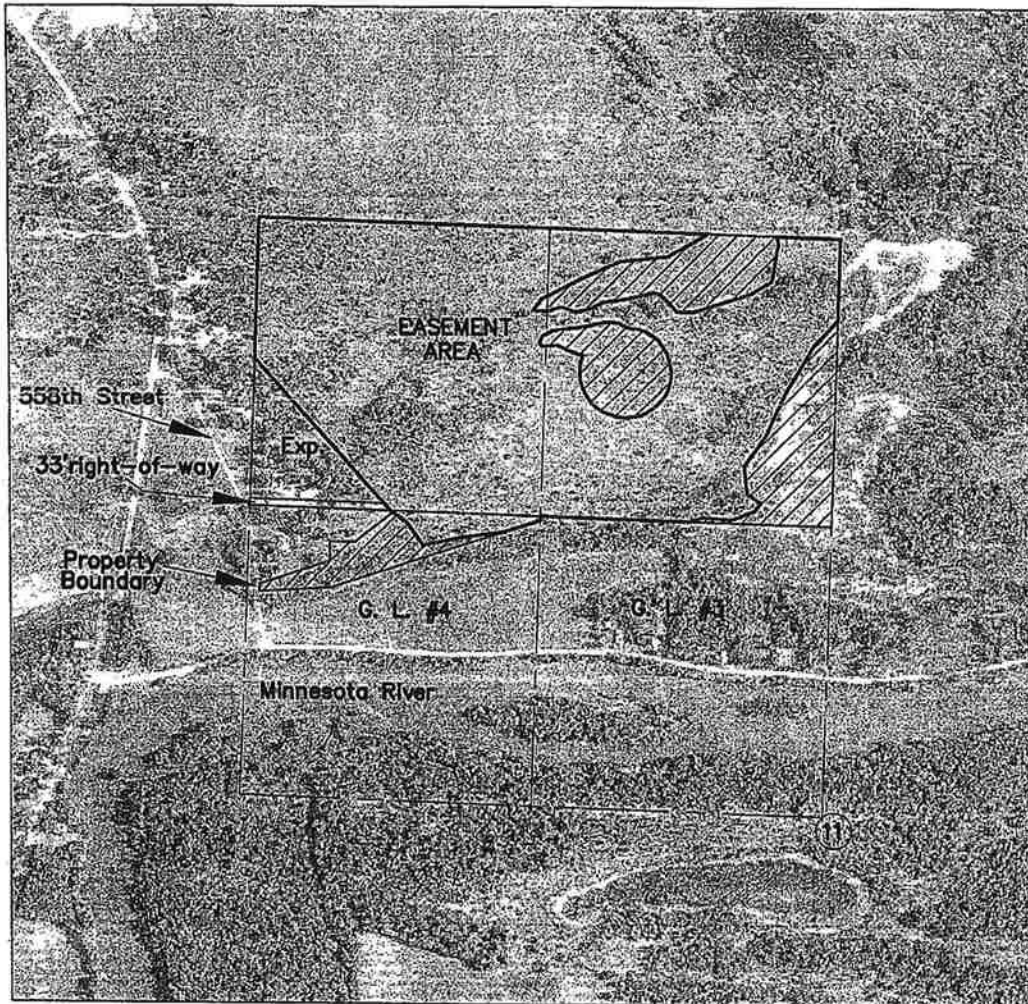
Lands Not Included in Easement

Section/Quarter/Sixteenth Line

STATE OF MINNESOTA
BOARD OF WATER AND SOIL RESOURCES
CONSERVATION EASEMENT
EXHIBIT 'A'

This map delineates the easement area(s) referred to in the attached easement conveyance. *This is not a legal survey, and not intended for use as a survey plat.*

Section 11 T. 115 N., R. 39 W., Yellow Medicine County



Prepared By:

Board of Water and Soil Resources

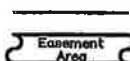
Dated:

March 10th, 2011

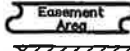
LEGEND



Center of Section



Boundary of Described Lands



Lands Included in Easement



Lands Not Included in Easement

Section/Quarter/Sixteenth Line

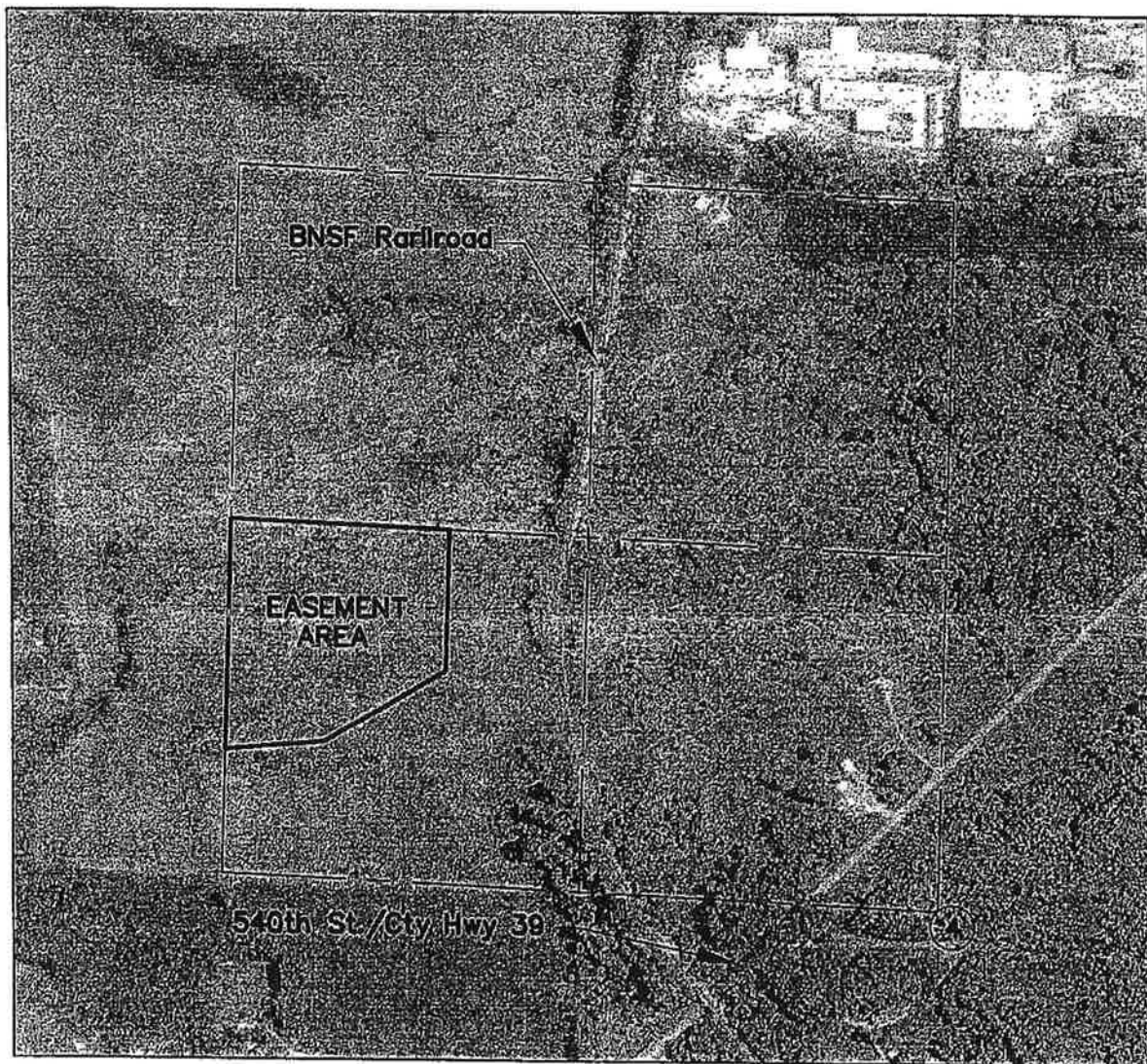
Easement I.D. No: 87-06-10-07

Map 1 of 1

STATE OF MINNESOTA
BOARD OF WATER AND SOIL RESOURCES
CONSERVATION EASEMENT
EXHIBIT 'A'

This map delineates the easement area(s) referred to in the attached easement conveyance. *This is not a legal survey, and not intended for use as a survey plat.*

Section 4 T. 115 N., R. 39 W., Yellow Medicine County



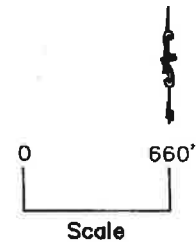
Easement I.D. No: 87-07-10-07

Map 1 of 1

STATE OF MINNESOTA
BOARD OF WATER AND SOIL RESOURCES
CONSERVATION EASEMENT
EXHIBIT 'A'

This map delineates the easement area(s) referred to in the attached easement conveyance. *This is not a legal survey, and not intended for use as a survey plat.*

Section 12 T. 114 N., R. 38 W., Yellow Medicine County



Prepared By:

Board of Water and Soil Resources

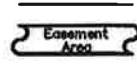
Dated:

June 28, 2011

LEGEND



Center of Section



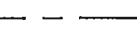
Boundary of Described Lands



Lands Included in Easement



Lands Not Included In Easement

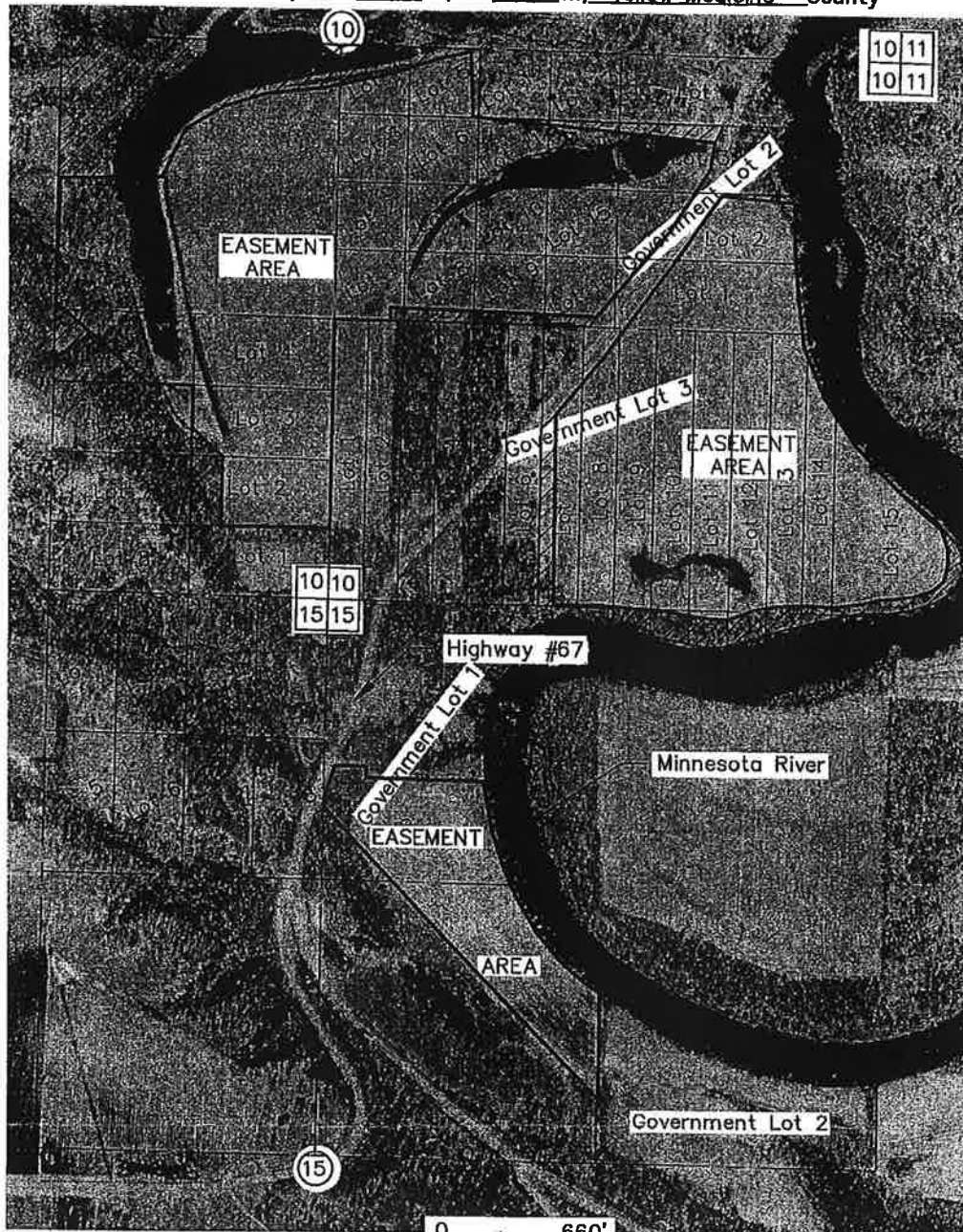


Section/Quarter/Sixteenth Line

STATE OF MINNESOTA
BOARD OF WATER AND SOIL RESOURCES
CONSERVATION EASEMENT
EXHIBIT 'A'

This map delineates the easement area(s) referred to in the attached easement conveyance.

Section 10/15 T. 115 N., R. 39 W., Yellow Medicine County



Prepared By:

Board of Water and Soil Resources

Dated:

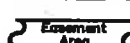
January 16, 2001

Scale

LEGEND



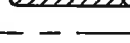
Center of Section



Boundary of Described Lands



Lands Included in Easement



Lands Not Included in Easement

Section/Quarter/Sixteenth Line











