

2009 Project Abstract

PROJECT TITLE: Protection of Granite Rock Outcrop Ecosystem

PROJECT MANAGER: Thomas J. Kalahar

AFFILIATION: Renville County Soil & Water Conservation District

MAILING ADDRESS: 1008 West Lincoln

CITY/STATE/ZIP: Olivia MN 56277

PHONE: 320-523-1559

E-MAIL: kalahar@yahoo.com

WEBSITE: www.renvillewcd.com

FUNDING SOURCE: Environment and Natural Resources Trust Fund

LEGAL CITATION: ML 2009, Chap. 143, Sec. 2, Subd. 4(h)

APPROPRIATION AMOUNT: \$1,500,000

Overall Project Outcome and Results

A total of 560.4 acres of rare and unique Minnesota River Valley landscape were permanently protected and sixteen landowners were paid \$1,379,814 for voluntarily placing perpetual conservation easements on those acres. Five counties participated in the project including Lac qui Parle, Chippewa, Yellow Medicine, Redwood and Renville. Easement applications were scored by resource professional teams and funding was based on those scores.

Soil & Water Conservation District (SWCD) employees saw a need to protect the natural environment and to provide economically viable choices for the landowners. The Minnesota River Valley contains exposed ancient granite rock outcrops that provide unique landscape features and habitat for specialized plant and animal communities rarely found elsewhere in Minnesota. No programs existed that would give landowners a payment if they chose to protect the area from development by mining, overgrazing and other development interests. Rock outcrops are a component of the Minnesota River's riparian zone, and destruction of this unique habitat degrades water quality and wildlife habitat in the Minnesota River and its tributaries. Removal of the rock results in severe degradation and permanent loss of these unique landscape features. The Minnesota River Corridor is easily susceptible to fragmentation because it comprises such a small percentage of the Minnesota River Watershed. Past development activities and mining operations have already fragmented large areas of the fragile Minnesota River Corridor.

Demand for aggregate is growing as our population and infrastructure grow. Interest in mining exposed granite rock outcrops in the Minnesota River Valley is high because the rock is readily available and there is no overburden to remove. This encourages the

practice of horizontal mining, removing the easiest and most profitable rock, and moving on. Unlike gravel mining operations, there is no reclamation plan possible for replacing this unique landscape feature once it is removed.

Environment and Natural Resources Trust Fund 2009 Work Program Final Report

Date of Report: August 15, 2012

Final Report

Date of Work Program Approval: Initial approval June 16, 2009
January 3, 2012

Project Completion Date: June 30, 2012

I. PROJECT TITLE: Protection of Granite Rock Outcrop Ecosystem

Project Manager: Thomas J. Kalahar

Affiliation: Renville SWCD

Mailing Address: 1008 West Lincoln

City / State / Zip: Olivia MN 56277

Telephone Number: 320-523-1559

E-mail Address: Kalahar@yahoo.com

FAX Number: 320-523-2389

Web Site Address: www.renvillewcd.com

Location: Portions of the Minnesota River Valley located in Lac qui Parle, Yellow Medicine, Chippewa, Redwood & Renville Counties.

Total Trust Fund Project Budget:	Trust Fund Appropriation	\$ 1,500,000
	Minus Amount Spent:	\$ 1,442,119
	Equal Balance:	\$ 57,881

Legal Citation: ML 2009, Chap. 143, Sec. 2, Subd. 4(h).

Appropriation Language: (h) Protection of Granite Rock Outcrop Ecosystem. \$1,500,000 is from the trust fund to the Board of Water and Soil Resources, in cooperation with the Renville Soil and Water Conservation District, to acquire perpetual easements of unique granite rock outcrops located in the Upper Minnesota River Valley and to restore their ecological integrity

FINAL PROJECT SUMMARY

A total of 560.4 acres of rare and unique Minnesota River Valley landscape were permanently protected and sixteen landowners were paid \$1,379,814 for voluntarily placing perpetual conservation easements on those acres. Five counties participated in the project including Lac qui Parle, Chippewa, Yellow Medicine, Redwood and Renville. Easement applications were scored by resource professional teams and funding was based on those scores.

Soil & Water Conservation District (SWCD) employees saw a need to protect the natural environment and to provide economically viable choices for the landowners. The Minnesota River Valley contains exposed ancient granite rock outcrops that provide unique landscape features and habitat for specialized plant and animal

communities rarely found elsewhere in Minnesota. No programs existed that would give landowners a payment if they chose to protect the area from development by mining, overgrazing and other development interests. Rock outcrops are a component of the Minnesota River's riparian zone, and destruction of this unique habitat degrades water quality and wildlife habitat in the Minnesota River and its tributaries. Removal of the rock results in severe degradation and permanent loss of these unique landscape features. The Minnesota River Corridor is easily susceptible to fragmentation because it comprises such a small percentage of the Minnesota River Watershed. Past development activities and mining operations have already fragmented large areas of the fragile Minnesota River Corridor. Demand for aggregate is growing as our population and infrastructure grow. Interest in mining exposed granite rock outcrops in the Minnesota River Valley is high because the rock is readily available and there is no overburden to remove. This encourages the practice of horizontal mining, removing the easiest and most profitable rock, and moving on. Unlike gravel mining operations, there is no reclamation plan possible for replacing this unique landscape feature once it is removed.

IV. OUTLINE OF PROJECT RESULTS:

Result 1: Habitat Protection through Perpetual Easements

Description: This project protected 560.4 acres of rock outcrop complexes within the Minnesota River Corridor and its tributaries. Using several layers of data, including the MN County Biological Survey, this project utilized a scoring system to identify and protect the highest quality sites along the Minnesota River Corridor within the five counties. Easement applications were prioritized by a local work group comprised of technical experts from local, state, and federal agencies. Easements were secured through the Reinvest in Minnesota (RIM) conservation easement process. The easements are held by the State of Minnesota working through the Board of Water and Soil Resources and the local Soil & Water Conservation Districts (SWCD). Compensation for easements with willing landowners was determined using the local cropland rates of the RIM easement program. Administration and processing of the easements was done through the Minnesota Board of Water and Soil Resources (BWSR) and Renville, Redwood, Chippewa, Yellow Medicine, and Lac qui Parle SWCD staff. The \$30,000 in Deliverable 3, was paid to local SWCD staff to process easements. When multiple easements were funded in a county, the administration funds to that SWCD were capped at \$7,500.

Final Budget Information for Result 1:

Trust Fund Budget \$1,500,000
Amount Spent: \$ 1,442,119
Balance: \$ 57,881

Deliverable	Completion Date	Budget	Amount Spent
1.Easement Acquisition	6-30-2012	\$1,435,400	\$1,379,814
2. Promotion of program, landowner contacts & initial completion of applications (\$2,500 to each of the 5 SWCD offices— numerous contacts resulting in 5-7 apps per county)	12/31/2009	\$12,500	\$12,500
3. Easement processing/admin/conservation planning/practice implementation for funded easements (maximum \$7,500 per SWCD office)	6/30/2012	\$30,000	\$30,000
4. Legal fees & title insurance & recording fees	6/30/2012	\$13,000	\$10,705
5. BWSR -- Easement processing (\$350/easement X 16 easements)	6/30/2012	\$5,600	\$5,600
6. Grant Administration (Renville SWCD)	6/30/2012	\$3,500	\$3,500

Final Report Summary:**Deliverable 1:**

Fifteen easements totaling 560.4 acres have been recorded and the landowners paid a total of \$1,355,814. A sixteenth easement was partially funded (\$24,000) from this grant bringing the total easement payments to \$1,379,814. A total of \$55,586 remains in this deliverable. An application that was accepted for funding had to be cancelled when the necessary landowner signatures could not be obtained in time to encumber the funds.

Deliverable 2: Program promotion was completed early in the grant period and all funds disbursed.

Deliverable 3: Funds were disbursed to the SWCD offices that processed easements and worked on conservation plans.

Deliverable 4: The final total for legal fees and title insurance was \$10,705 leaving \$2,295 unspent in this category. It is impossible to estimate the exact amount

needed in this deliverable as the amount of legal work needed varies greatly from easement to easement and the bills for both attorney fees and title insurance are received after the easements are recorded and the landowners paid.

Deliverable 5: The Board of Water and Soil Resources staff are a partner in this process and are willing to process easements for \$350/easement. The funds have been disbursed to BWSR.

Deliverable 6: Renville County SWCD acts as grant manager and partial fiscal manager. The administrative funds were paid to the Renville County SWCD.

Result 2: Habitat Protection Invasive Species Removal

Description: A Conservation Plan is required for each RIM easement. The plan outlines conservation practices such as removal of invasive species and livestock exclusion, and provides for improvement measures. Habitat maintenance may include rotational grazing systems, fencing, native and non-native invasive species removal (i.e. Red Cedar, Buckthorn, Siberian Elm, & Sumac), prescribed burning and in some cases seeding of native species. Restoration activities began as easement were recorded and landowners issued easement payment. Individual easement conservation plan practices were targeted for completion within one year of easement recording. No ENRTF monies were used for practice implementation. SWCD Staff actively pursued funds from Minnesota DNR, the US Fish & Wildlife Service, BWSR Programs, USDA programs and funds from private conservation groups for practice implementation and were able to fund all the work outlined in the conservation plans with funds from these sources.

Summary Budget Information for Result 2: Trust Fund Budget: \$ -0-
Amount Spent: \$ -0-
Balance: \$ -0-

Deliverable	Completion Date	Budget		
1. Conservation Plan Practice implementation for 16 easements totaling 583 acres.	6/30/2012	\$0		

Result Completion Date: June 30, 2012

Final Result Summary:

Each easement is required to have a conservation plan that outlines any practice implementation or restoration for that easement. Local SWCD offices continue to assist landowners with enhancement as requested. Local SWCD staff have been successful in finding other sources to fund the practices. Included in these funding sources are two easements where the Conservation Corps of Minnesota worked a

total of 140 hours removing trees. On another easement cedar were removed and a prescribed burn conducted. That was totally funded through the USDA NRCS Environmental Quality Incentive Program (EQIP). Funding was also secured from the USDA NRCS Wildlife Habitat Incentive Program (WHIP) and from the State of Minnesota Native Buffer Cost-Share Program. Several of the easements did not require any restoration work. All the work that was done was scheduled based on the grassland management/restoration plans and/or tree removal plans written by DNR staff for each of the easements. It is the role of the SWCD to work with easement holders on maintenance and enhancement of easements not only during the easement process but permanently. Easements are spot checked regularly with SWCD staff maintaining regular contact with the landowners about the condition of their easement and assisting with not only information on maintenance, but also assistance with funding for maintenance projects.

V. TOTAL TRUST FUND PROJECT BUDGET:

Personnel: \$45,000

Each of the five SWCD offices received \$2,500 to promote the program within their county at an estimated 3% FTE. The work involved media promotion, direct contact with landowners who had eligible lands, and working with interested landowners on the initial applications that were submitted for scoring. Forty-four applications were scored and eventually 16 of those projects were funded. Eventually one of those easements was cancelled well into the easement processing. Renville SWCD received \$3,500 to administer the grant at an estimated 4% FTE. \$30,000 was budgeted for Easement Specialists to process easements, write conservation plans, work with landowners, contractors and other agency staff on restoration activities. This was budgeted at \$7,500/SWCD and comes to 9% FTE. After the scoring process, administration payments were adjusted based on number of easements funded per county. One county did not have any funded applications in this grant and did not receive a payment.

Contracts: \$18,600

Contracts included \$350/easement to the BWSR to process RIM easements for a total of \$5,600 (\$350 X 16). Also included in the budget item is \$13,000 for attorney fees to do title searches, generate title opinions and for payment of title insurance policies and recording fees. Of the budgeted amount, \$10,705 was spent and \$2,295 remained in the unspent category at the end of the grant period. It is difficult to accurately budget for these costs as they vary by hundreds of dollars depending on the amount of legal research required and also on the amount of the title insurance policy payment.

Equipment/Tools/Supplies: \$0

Acquisition, including easements: \$1,435,400

As stated earlier, the final amount of easement payments was \$1,379,814 leaving \$55,586 unspent due to the difficulty of obtaining the necessary landowner signatures in time to encumber the funds.

Other (Restoration): \$0

Funds will be secured from other sources.

TOTAL TRUST FUND PROJECT BUDGET: \$1,500,000

Explanation of Capital Expenditures Greater Than \$3,500: N/A

VI. PROJECT STRATEGY:

A. Project Partners:

Renville SWCD is the lead for grant administration. Throughout the grant period, SWCD staff in Renville, Redwood, Lac qui Parle, Chippewa and Yellow Medicine Counties worked with landowners in their respective county to promote and process easements, as well as develop conservation and restoration plans. The US Fish & Wildlife Service and Minnesota Department of Natural Resources provided staff for the technical evaluation of easement applications and restoration practices. County Boards of Commissioners, along with the Upper and Lower Sioux Indian Communities, provided letters of support for this project. Soil & Water Conservation District Boards of Supervisors in the five Counties submitted letters of support and pledged staff time aimed toward the successful completion of this project.

B. Project Impact and Long-term Strategy:

Protecting the rock outcrops is important to the Dakota people. To degrade/destroy rock outcrops or sacred landscapes is to destroy the Dakota Culture. The Dakota consider the Minnesota River Valley their spiritual home. Their relationship with nature calls for reverence, respect, and humility.

Protection and restoration of rock outcrops preserves unique landscapes and habitats and benefits the numerous endangered, threatened, and special concern species found in this ecosystem. The rock outcrops, and their associated wetland complexes, are home to the following state and federal rare, threatened, and endangered species (both flora and fauna): **Federal Threatened:** Prairie bush clover. **State Endangered:** Wolf's spikerush, lichen (*Buellia nigra*), Ball cactus, Henslow's sparrow. **State Threatened:** Kittentails, Short-pointed umbrella sedge, Dakota skipper, Ottoe skipper, Loggerhead shrike. **State Special Concern:** Waterhyssop, Larger water-starwort, mudwort, Great Plains prickly pear, Clustered broomrape, Five-lined skink, Bald eagle, Pawnee skipper, Powesheik skipper, Regal fritillary. **Species of Greatest Conservation Need:** Upland sandpiper. **Non-listed/tracked species:** Carolina foxtail, Eastern fox snake, Three-stamened waterwort, Little barley, Virginia forget-me-not, Mousetail.

Some of the conservation plans required the removal of native and non-native invasive species, such as Red Cedar, Buckthorn, Siberian Elm and Sumac, and encouraged establishment and the proliferation of specialized plant and animal communities rarely found elsewhere in Minnesota. Mining and intensive grazing disturbance leave the land susceptible to increased soil and mineral erosion and increased nutrient loading. This project is helping to protect the water quality of the Minnesota River, its tributaries, and rock outcrop wetlands, by preventing mining and unmanaged grazing on rock outcrops. The protection of the rock outcrop associated wetlands from mining, development, and agricultural production insures that the inherent benefits of these existing wetlands, such as groundwater recharge and reduced flooding impacts, are perpetuated.

In 2007 the LCCMR funded the initial \$563,000 to protect Granite Rock Outcrops and Associated Wetlands in Redwood and Renville Counties. A total of 212.4 acres is enrolled into Perpetual RIM Easements as a result of that grant. The current project protects an additional 560.4 acres and expands the eligible area to five counties along the Minnesota River. Prescribed grazing, haying, and prescribed burning will all be essential tools in the future management of this unique landscape.

C. Other Funds Proposed to be Spent during the Project Period:

Minnesota DNR & US Fish & Wildlife Service will provide \$9,600 in in-kind for staff to do site visits of all applications and score and prioritize sites for acceptance & funding. In addition there was BWSR native Buffer Cost-Share Program, Minnesota DNR and the US Fish & Wildlife Service, and Minnesota Conservation Corps funds and staff time to assist with the cost of invasive species removal and other conservation practice implementation.

D. Spending History: \$563,000.00 has been spent on this project since July 1, 2007 under ML 2007, Chap. 30, Sec 2, Subd. 5(b). \$517,410.72 was spent to fund four easements protecting 212.4 acres. \$6,540.00 was spent for professional services including \$350/easement to BWSR for RIM easement development & processing, attorney fees for title searches & title opinions as well as payment for title insurance policies. \$6,049.28 of grant funds were spent for Habitat Restoration. In addition there was \$31,440.72 obtained from other sources for Habitat Restoration. Those sources included US Fish & Wildlife Service, the Minnesota DNR from both Wildlife & Ecological Services Divisions, the State of Minnesota Native Buffer Cost-Share program and the USDA Natural Resource Conservation Service EQIP program. There was a total of \$33,000 in Personnel costs for this project which was disseminated to the Renville & Redwood SWCD offices.

VII. DISSEMINATION: The Renville SWCD website (www.renvilleswcd.com) continues to update the public on the Rock Outcrop projects by posting information & photos in the "News" section of the website. Each SWCD in Minnesota is required to maintain a website. Those websites contain information on available programs and update the public on current topics of interest in the county.

Each SWCD has a unique position within their community to deliver conservation programs. SWCDs are the local “go to” agency for conservation program delivery and the staff are both trusted and respected by local landowners. Each SWCD office will personally contact landowners who have high quality rock outcrop landscapes on their property. This one-on-one contact will be a major source of providing information to the public.

The 2007 LCCMR Grant received significant media coverage in the area and the 2009 Grant funding has been publicized. Recently there was an article in the weekend “Outdoors” section of the West Central Tribune publicizing the project and encouraging interested landowners to contact their local SWCD staff if they would like to make application for this grant or for potential future grant applications. Tom Kalahar, Project Manager, was interviewed for the article and quoted several times. He was also interviewed by Fred Harris for an article on the Hard Rock Outcrop Easement Program that was published in the March-April 2009 issue of the Minnesota Conservation Volunteer magazine. Individual SWCD offices are also contacting their local newspapers to include articles on the Hard Rock Easement Program. In addition to that information, a landowner workshop was held in Granite Falls on March 28, 2009 which provided information to interested landowners on the Hard Rock Outcrop Easement Program.

Individual SWCD offices will continue to keep their local press informed on the progress of the program. Tom Kalahar will be in contact with the regional West Central Tribune of Willmar, MN as potential stories unfold.

In early November 2009, the West Central Tribune published an article about the program on the front page of their weekend Outdoor section. The article included several color photos.

VIII. REPORTING REQUIREMENTS: Periodic work program progress reports will be submitted not later than December 31, 2009, June 30, 2010, December 31, 2010, June 30, 2011 and December 31, 2011. A final work program report and associated products will be submitted between June 30, 2012 and August 15, 2012 as requested by the LCCMR.

IX. RESEARCH PROJECTS: N/A

Attachment A: Final Budget Detail for 2009 Projects											
Project Title: Protection of Granite Rock Outcrop Ecosystem											
Project Manager Name: Thomas J. Kalahar											
Trust Fund Appropriation: \$1,500,000											
2009 Trust Fund Budget		Result 1 Budget	Amount Spent	Final Balance	Result 2	Amount Spent	Final Balance	TOTAL BUDGET	TOTAL BALANCE		
		Habitat Protection through Perpetual Easements			Habitat Protection Invasive Species Removal						
BUDGET ITEM											
PERSONNEL: wages and benefits Technical staff from 5 cooperating SWCD offices. \$2,500/SWCD for promotion (3% FTE) and landowner contacts to generate applications from interested landdowners (25-30 apps).		\$12,500	\$12,500	\$0				\$12,500	\$0		
\$7,500/easement for easement processing, conservation plans, working with landowners, contractors and other agencies on practice implementation (9% FTE)--maximum per SWCD of \$7,500		\$30,000	\$30,000	\$0				\$30,000	\$0		
\$3,500 to Renville SWCD for grant management (4% FTE).		\$3,500	\$3,500	\$0				\$3,500	\$0		
Contracts											
Professional/technical BWSR for Easement development & processing (\$350/easement X 5)		\$5,600	\$5,600	\$0				\$5,600	\$0		
Easement acquisition (\$2,400/acre X 530 acres)		\$1,435,400	\$1,379,814	\$55,586				\$1,435,400	\$55,586		
Professional Services for Acq. (Attorney fees for title searches, develop title opinions and pay for title insurance policies: \$2,000/easement X 5 easements)		\$13,000	\$10,705	\$2,295				\$13,000	\$2,295		
Other May include rotational grazing systems, fencing, native & non-native invasive species removal, prescribed burning & in some cases seeding of native grasses. \$307/acres X 530 acres		\$0			\$0	\$0	\$0	\$0	\$0		
COLUMN TOTAL		\$1,500,000	\$1,442,119	\$57,881		\$0	\$0	\$1,500,000	\$57,881		

Granite Rock Outcrop Applications
2009 & 2010 ENRTF Grants

Landowner	County	Twp/Sec	Acres	Score	Land Pymt	Year	Status
Available funds							
Borgerson	LQP	Agassiz 10	45.10	175	\$ 97,781.31	2009-1	complete
Dahmes	Redwood	Delhi 11	21.60	165	\$ 49,533.12	2009-2	complete
Kern	Redwood	Sherman 23/24	132.50	165	\$ 381,600.00	2009-3	complete
Thomson	LQP	LSN 20	30.00	160	\$ 62,667.00	2009-4	complete
Peterson	Yellow Medicine	ESR 29 & 30	18.50	160	\$ 42,624.00	2009-5	complete
Tjaden	Yellow Medicine	MF 10	26.30	150	\$ 59,411.70	2009-6	complete
Josh Haen East	Renville	BF 18	0.00	140	\$ -	cancel ap	cancel
Gaasch West	Renville	BC 31	3.70	140	\$ 9,886.77	2009-7	complete
Essame	Yellow Medicine	SA 12	43.10	140	\$ 97,330.50	2009-8	complete
Haas Trust West	Redwood	HO 28	50.00	140	\$ 92,520.00	2009-10	complete
Stegner	Redwood	SF 24	46.40	135	\$ 109,954.08	2009-11	complete
Enesvedt	Renville	SSH 16	27.60	135	\$ 73,998.36	2009-12	complete
Skalbeck	Renville	SSH 16	16.60	135	\$ 44,506.26	2009-13	complete
Skjefte	Yellow Medicine	MF 4 & 5	40.40	135	\$ 91,263.60	2009-14	complete
Smith	Redwood	SF 7	177.90	135	\$ 421,569.63	2010-1	complete
Sebring Trust	Yellow Medicine	MF 10	44.50	135	\$ 100,525.50	2010-2	complete
Red Cedar of YM Cty	Redwood	SF 18	79.90	130	\$ 189,339.03	2010-3	complete
Haas Trust East	Redwood	PX	53.90	130	\$ 143,126.20	2010-4	complete
Mauer/Kodet	Redwood	PX	13.00	130	\$ 24,055.20	2010-5	complete
Lawrence Muetzel	Renville	LF 2	15.80	125	\$ 45,248.04	2010-6	complete
Almich	Yellow Medicine	MF 3 & 4	43.60	125	\$ 98,492.40	2010-7	complete
Jensen	Renville	BF 18	6.30	125	\$ 16,834.23	2010-8	complete
Tufto	Redwood	SF 24	20.00	120	\$ 47,394.00	2010-9	complete
Tjosvold	Chippewa	GF 28	35.10	120	\$ 86,714.55	2010-10	pending
Peterson Family Trust	Chippewa	GF 28	39.70	120	\$ 98,078.85	2010-11	complete
Ross	Yellow Medicine	MF 2	40.90	120	\$ 92,393.10	2010-12	complete
Opdahl / Burgeson	Yellow Medicine	MF 2 & 11	67.90	120	\$ 153,386.10	2010-13	complete
Josh Haen West	Renville	BF 18	0.00	115	\$ -	cancel ap	cancel
Dirlam	Redwood	Delhi 4	6.20	110	\$ 14,217.84		
Kollen	Yellow Medicine	ESR 32	36.50	105	\$ 21,327.30		
Huseby	Redwood	SF 18	9.00	105	\$ 84,096.00		
Bakken	Yellow Medicine	MF 1, 2, 12	99.00	100	\$ 223,641.00		
Gaasch East	Renville	BC 36	13.10	95	\$ 44,891.28		
Hayes	Renville	LF 3	20.00	95	\$ 57,275.00		
Dahmes South	Redwood	Delhi 11	17.40	85	\$ 39,901.68		
Clark	Chippewa	Sparta 28	21.50	50	\$ 52,380.45		
Scored after 2010 grant							
Roden	Yellow Medicine	MF 11 & 2	61.00	175	\$ 137,799.00	2010-14	complete
Malecha	Renville	BF 20	30.70	165	\$ 82,033.47	2009-15	complete
Baker	Yellow Medicine	MF 4 & 5	13.50	145	\$ 30,496.50	2010-15	complete
Borgerson	Lac qui Parle		0.00	185	\$ -	2009 cancel	cancel
Larson	Lac qui Parle		28.00	145	\$ 60,704.00	2009-16	complete
Ross	Yellow Medicine		35.40	145	\$ 80,127.90	both**	complete
Forkrud	Renville	LSH 22	38.80	110	\$ 144,491.20		
Monson, Andrew	Yellow Medicine		28.80	90	\$ 66,355.20		
Total Applications			1,599.20		\$ 3,869,971.35		

LCCMR Granite Rock Outcrop Grant Program

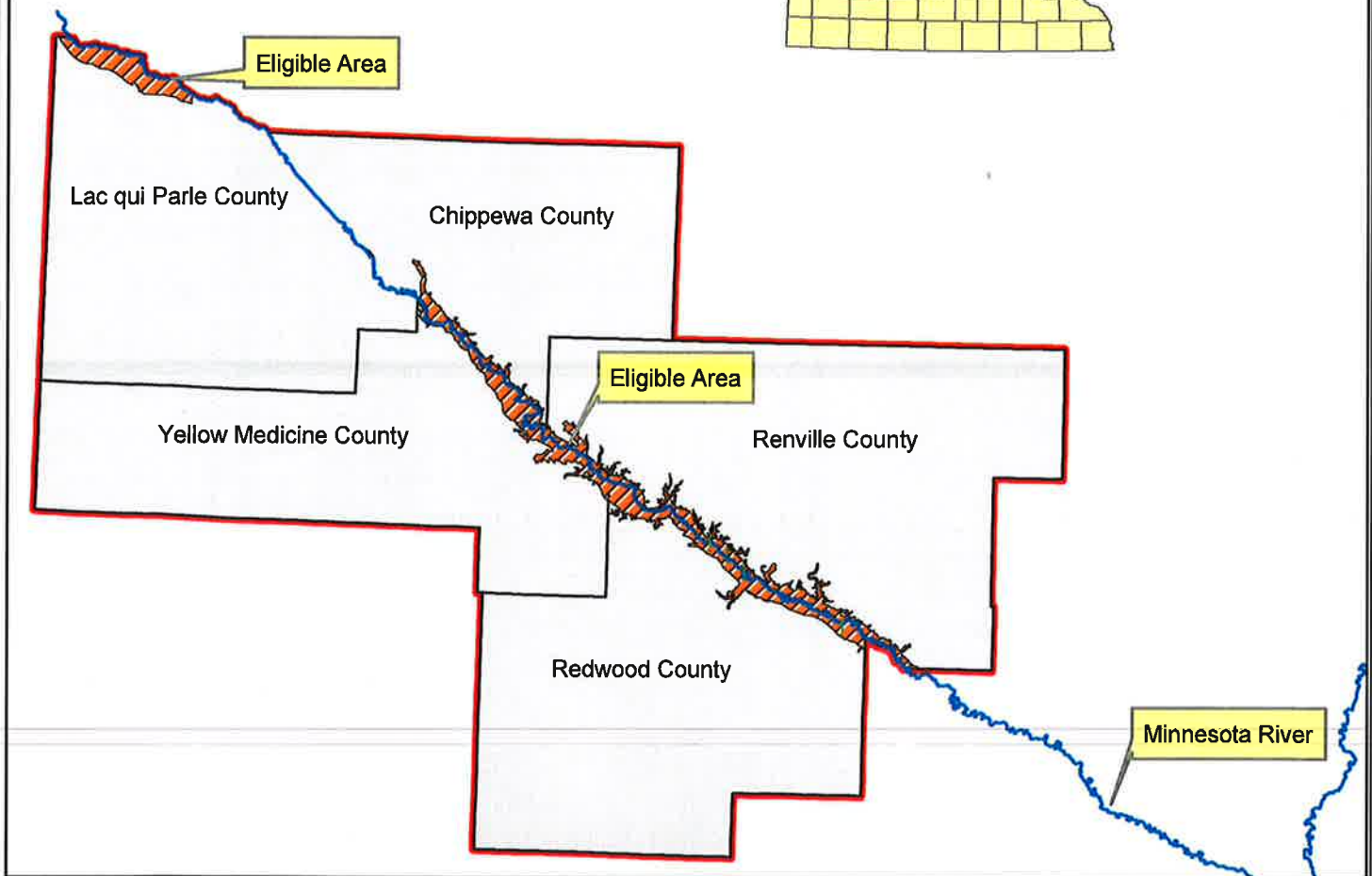
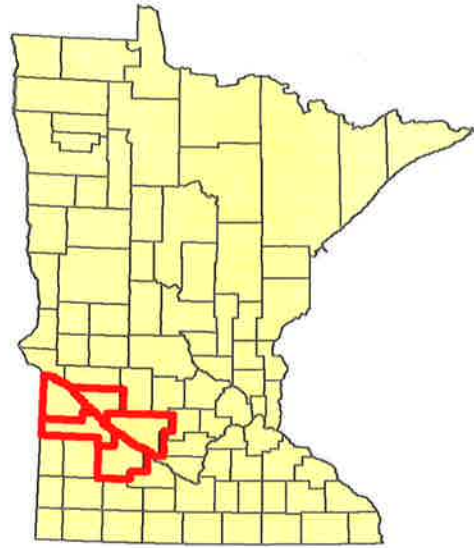
2009 Grant Funds		2010 Grant		
Funded Acres	560.50	Funded Acres	748.40	
Total Easement funding	\$ 1,355,814.17	Easement Funds	1,765,580.23	\$ 1,741,580.23
Total funded acres 2009 & 2010 Grants		1,308.90	Total funded 2009 & 2010	\$ 3,121,394.40
\$3,181,815 total budgeted for easements in 2009 & 2010 grants				
(after 12/31/2011 revision request for 2009 grant)				

**NOTE: The Ross easement acres and cost are included in the 2010 totals. The easement will in fact use \$24,000 of 2009 funds and \$56,127.90 from 2010 funds therrefore exhibit A for . 2009 final report will show \$1,379,814 spent & 2010 will show \$1,741,580




LCCMR Granite Rock Outcrop Grant Eligible Area

**ML 2007 5(b) – 212.4 acres
in 2 participating counties**

**ML 2009 4(h) - 560.4 acres
in 5 participating counties**



Legend

-  MN River
-  Grant Eligible Area
-  Participating Counties

Upper MN River Valley

4

93,000 46,500 0 93,000 Feet

37-01-09-07



Donald Thomson
3534 221th Ave
Madison MN 56256

**Granite Outcrop
Easement 30 Acres**

Lac qui Parle SWCD
8-6-12

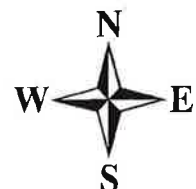


Legend

-  Easement Area
-  Sections

Lac qui Parle County
NE1/4 120N R44W
Lake Shore North 20

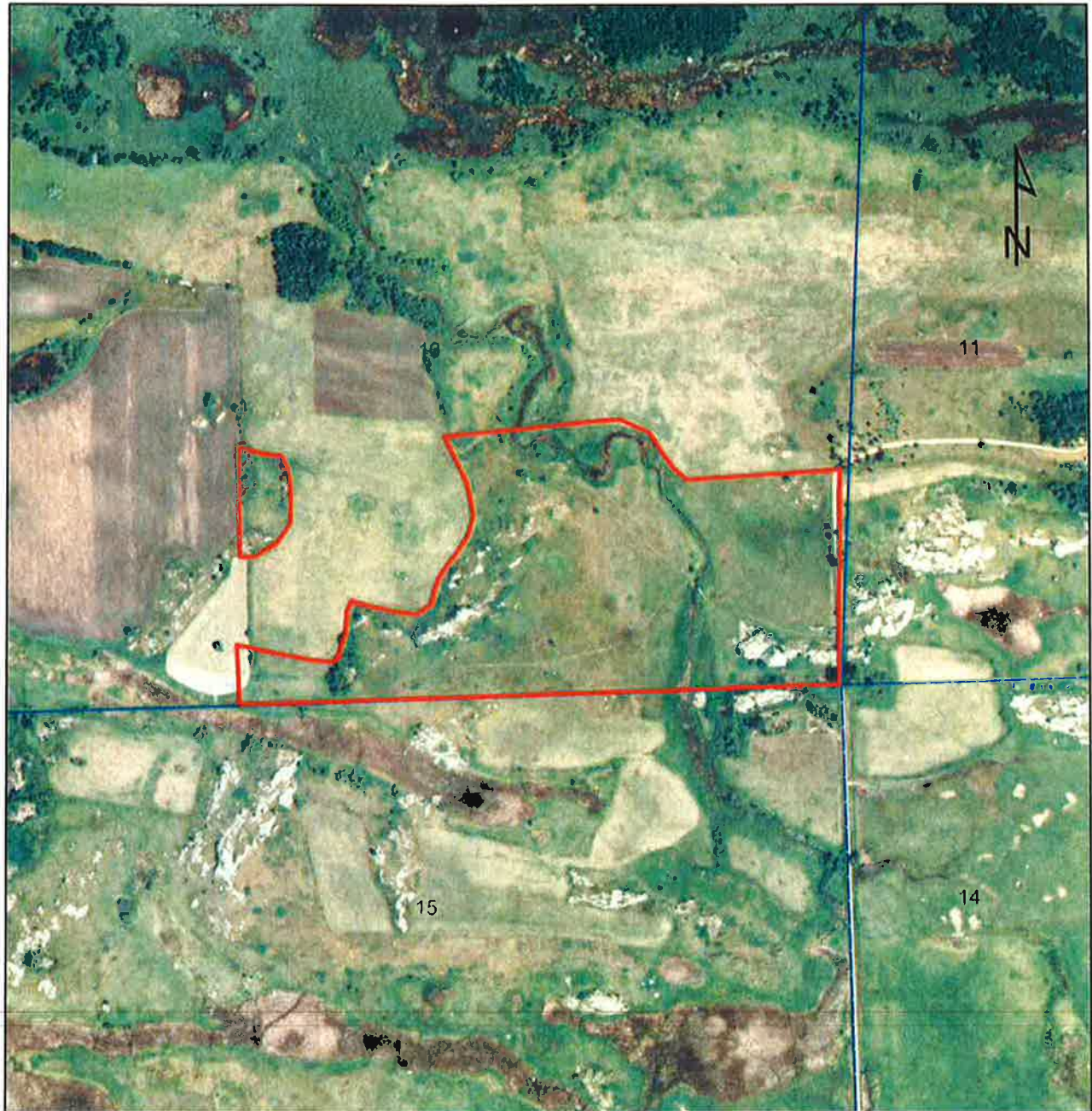
0 320 640 1,280 1,920 2,560
Feet





37-02-09-07

Alfred and Barbara Borgerson Granite Outcrop
3820 191st Ave. Easement 45.1 Acres
Odessa MN, 56276

Lac qui Parle SWCD
8-6-12

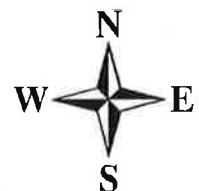


Legend

-  Easement Area
-  Sections

Lac qui Parle County
SE1/4 120N R45W
Agassiz 10

0 230 460 920 1,380 1,840
Feet



37-04-09-07



Dan Larson
3741 161st Ave.
Odessa MN 56276

**Granite Outcrop
Easement 28 Acres**

Lac qui Parle SWCD
8-6-12



Legend

-  Easement Area
-  Sections

Lac qui Parle County
SW1/4 120N R45W
Agassiz 10

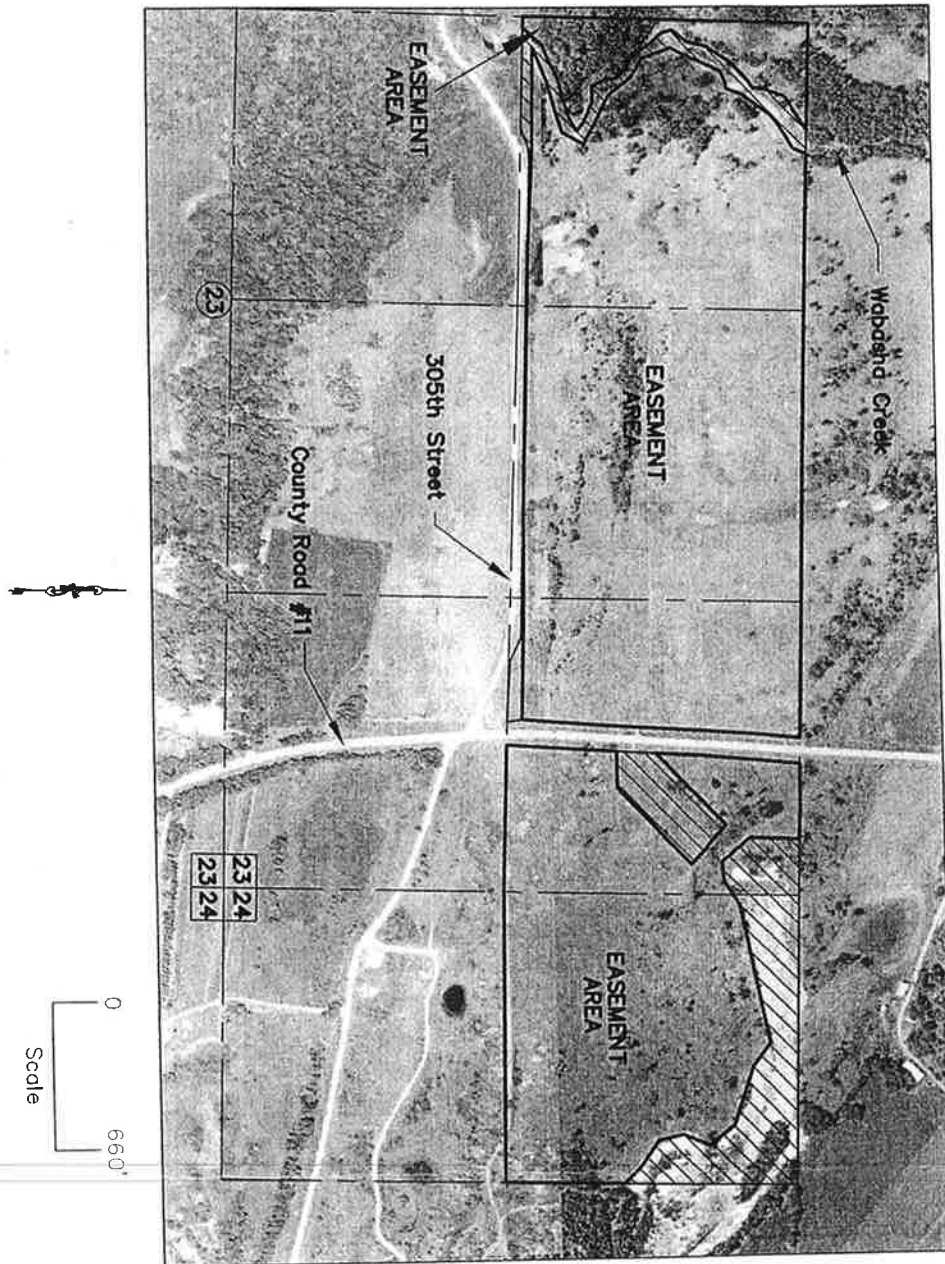
0 235 470 940 1,410 1,880
Feet



STATE OF MINNESOTA
BOARD OF WATER AND SOIL RESOURCES
CONSERVATION EASEMENT
AMENDED EXHIBIT 'A'

This map delineates the easement area(s) referred to in the attached easement conveyance. *This is not a legal survey, and not intended for use as a survey plat.*

Section 23/24 T. 112 N., R. 34 W., Redwood County



Prepared By:

Board of Water and Soil Resources

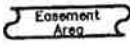
Dated:

July 26th, 2010

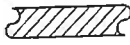
LEGEND



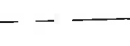
Center of Section



Boundary of Described Lands



Lands Included in Easement



Lands Not Included in Easement

Section/Quarter/Sixteenth Line

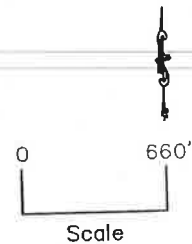
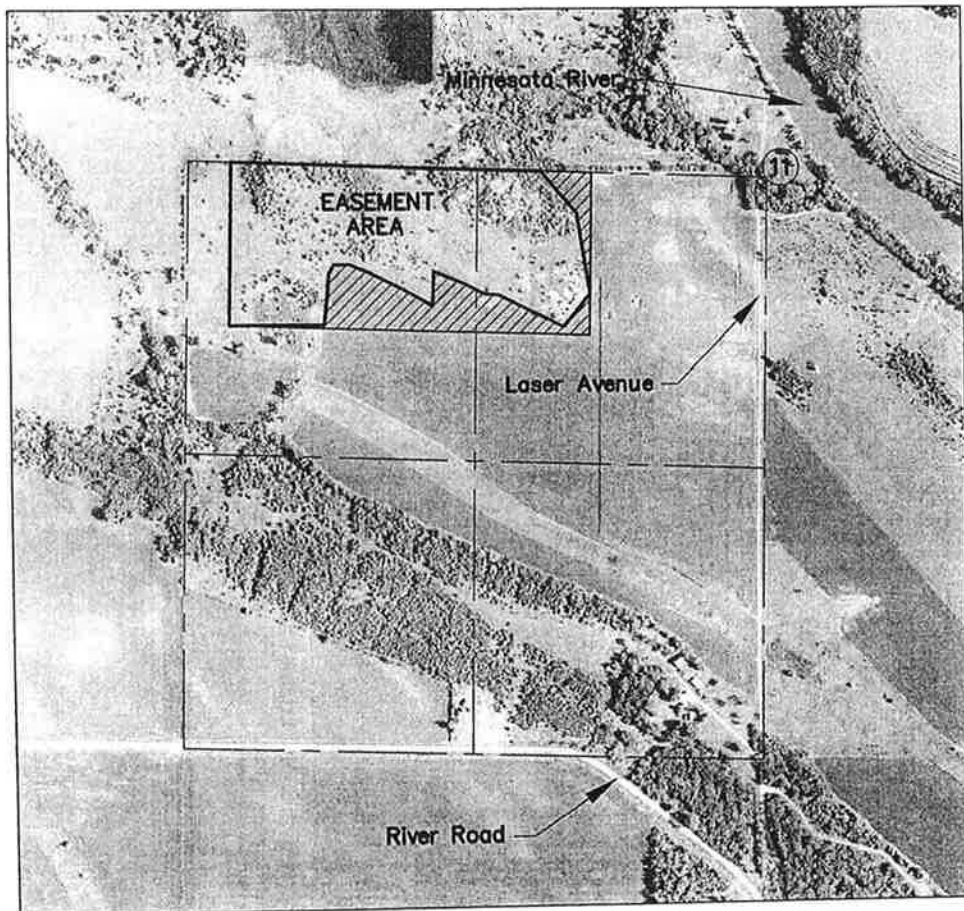
Easement I.D. No: 64-02-09-07

Map 1 of 1

STATE OF MINNESOTA
BOARD OF WATER AND SOIL RESOURCES
CONSERVATION EASEMENT
EXHIBIT 'A'

This map delineates the easement area(s) referred to in the attached easement conveyance. *This is not a legal survey, and not intended for use as a survey plat.*

Section 11 T. 113 N., R. 36 W., Redwood County







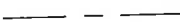
Prepared By:

Board of Water and Soil Resources

Dated:

November 10, 2009

LEGEND

-  Center of Section
-  Boundary of Described Lands
-  Lands Included in Easement
-  Lands Not Included in Easement
-  Section/Quarter/Sixteenth Line

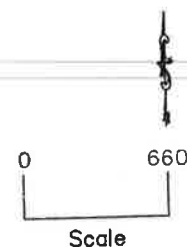
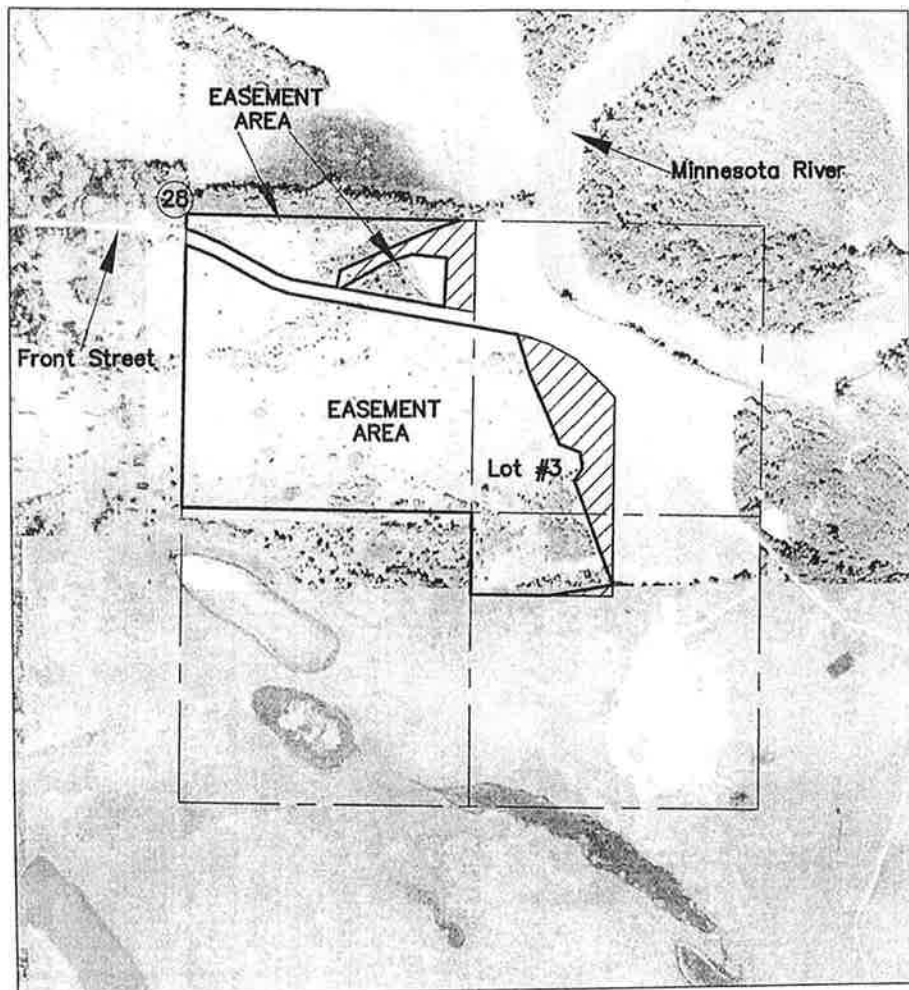
Easement I.D. No: 64-03-09-07

Map 1 of 1

STATE OF MINNESOTA
BOARD OF WATER AND SOIL RESOURCES
CONSERVATION EASEMENT
EXHIBIT 'A'

This map delineates the easement area(s) referred to in the attached easement conveyance. *This is not a legal survey, and not intended for use as a survey plat.*

Section 28 T. 113 N., R. 35 W., Redwood County



Prepared By:

Board of Water and Soil Resources

Dated:

November 12th, 2009

LEGEND



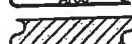
Center of Section



Boundary of Described Lands



Lands Included in Easement



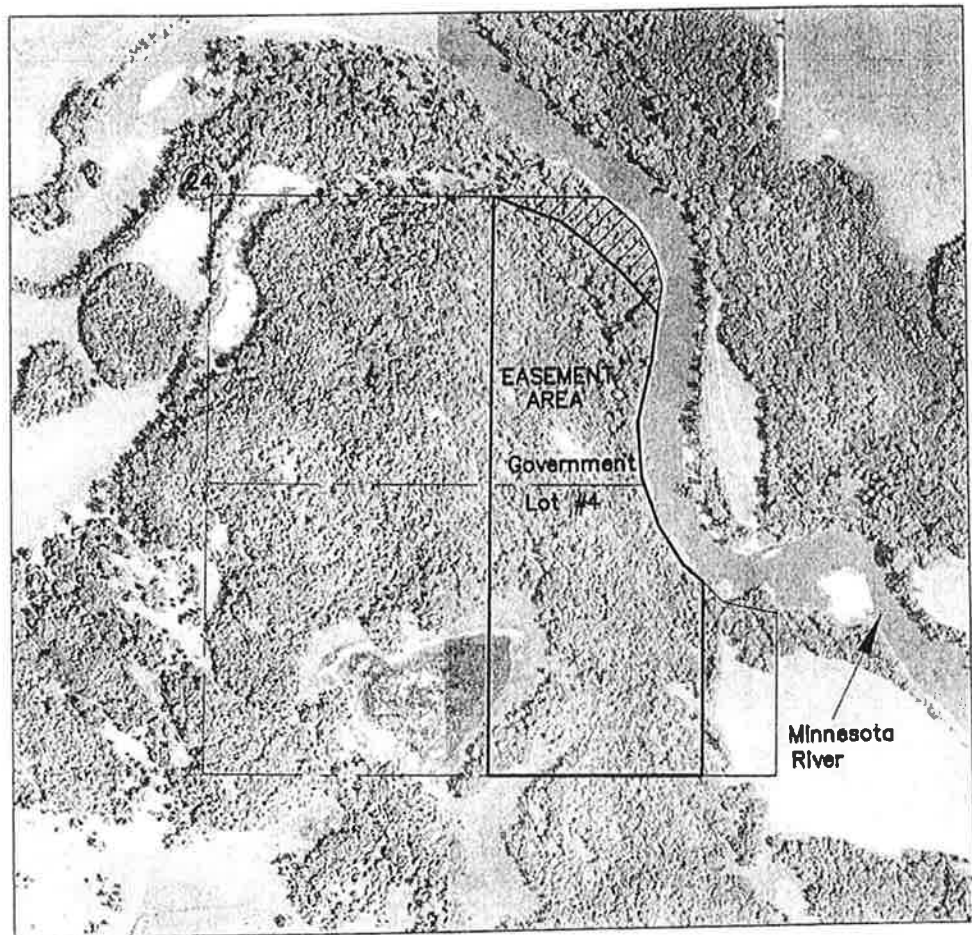
Lands Not Included in Easement

--- Section/Quarter/Sixteenth Line

STATE OF MINNESOTA
BOARD OF WATER AND SOIL RESOURCES
CONSERVATION EASEMENT
EXHIBIT 'A'

This map delineates the easement area(s) referred to in the attached easement conveyance. *This is not a legal survey, and not intended for use as a survey plat.*

Section 24 T. 114 N., R. 37 W., Redwood County



0 660'
Scale

Prepared By:

Board of Water and Soil Resources

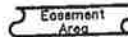
Dated:

January 25th, 2010

LEGEND



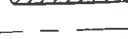
Center of Section



Boundary of Described Lands



Lands Included In Easement



Lands Not Included In Easement

Section/Quarter/Sixteenth Line

DOC # A356900

DC # A 356298

Easement I.D. No: 65-04-09-07

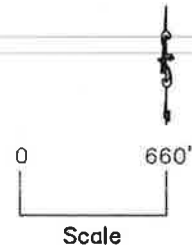
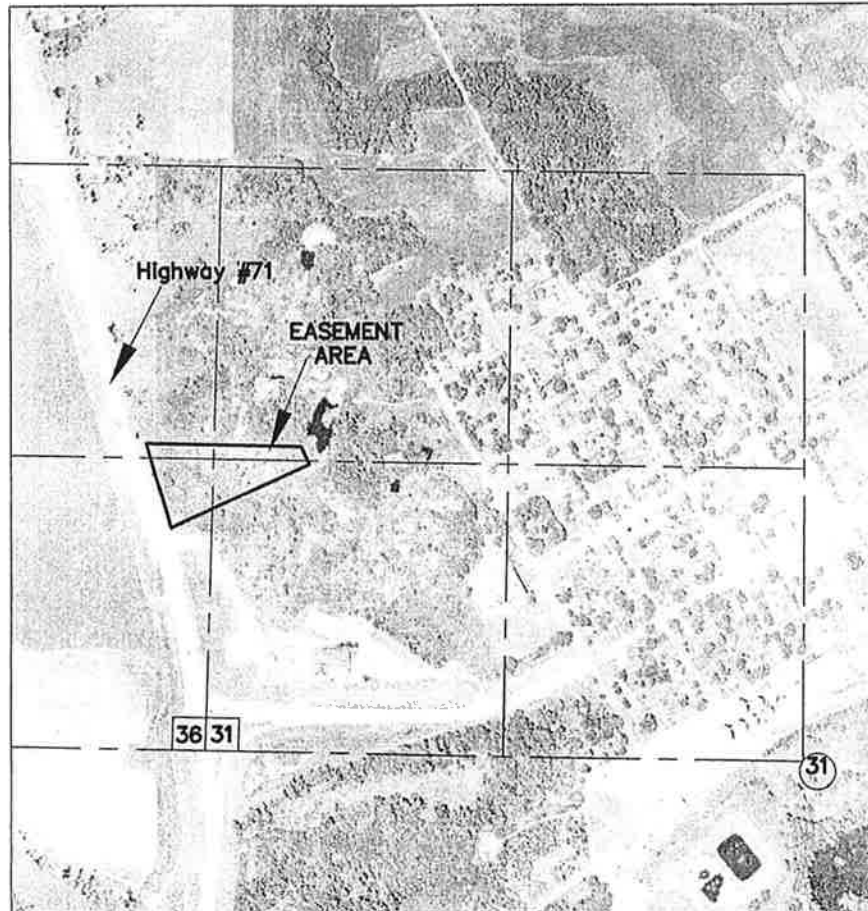
Map 1 of 1

STATE OF MINNESOTA
BOARD OF WATER AND SOIL RESOURCES
CONSERVATION EASEMENT
EXHIBIT 'A'

This map delineates the easement area(s) referred to in the attached easement conveyance. *This is not a legal survey, and not intended for use as a survey plat.*

Section 31 T. 113 N., R. 34 W., Renville County

Section 36 T. 113 N., R. 35 W.,



Prepared By:

Board of Water and Soil Resources

Dated:

November 16th, 2009

LEGEND



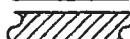
Center of Section



Boundary of Described Lands



Lands Included in Easement



Lands Not Included in Easement

Section/Quarter/Sixteenth Line

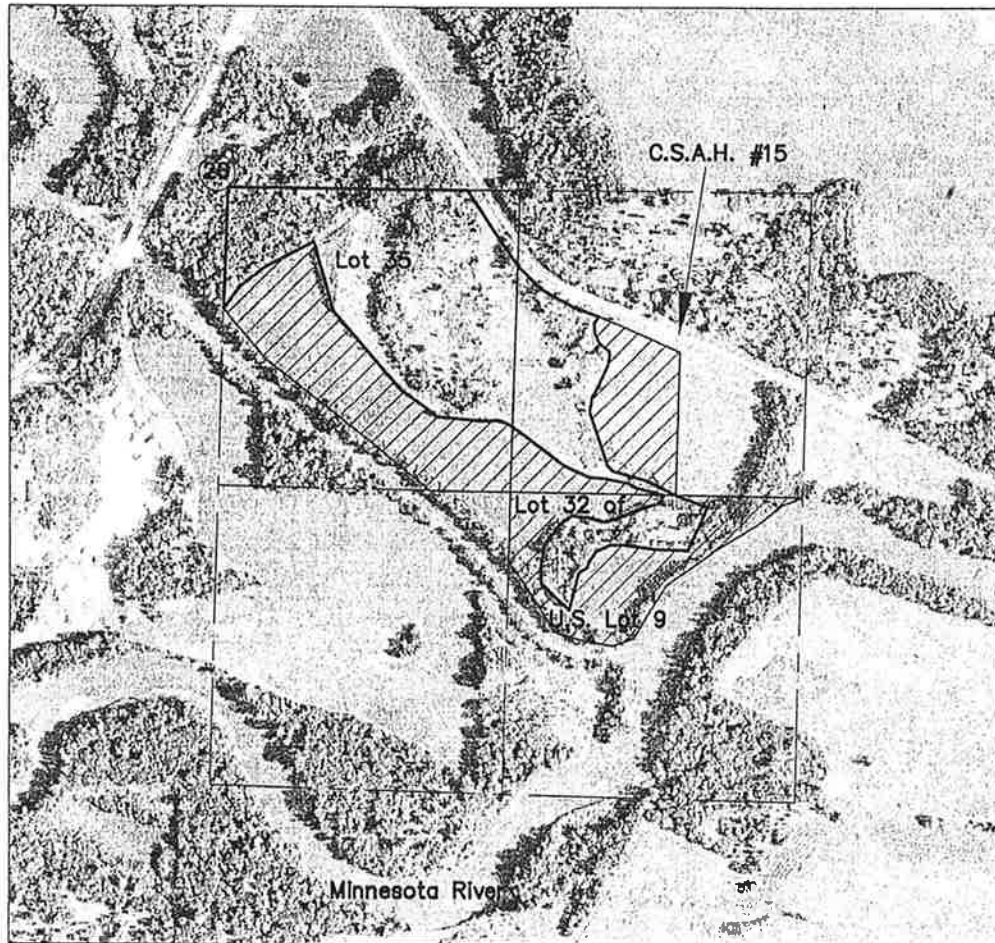
Easement I.D. No: 65-05-09-07

Map 1 of 1

STATE OF MINNESOTA
BOARD OF WATER AND SOIL RESOURCES
CONSERVATION EASEMENT
EXHIBIT 'A'

This map delineates the easement area(s) referred to in the attached easement conveyance. *This is not a legal survey, and not intended for use as a survey plat.*

Section 20 T. 113 N., R. 35 W., Renville County



Prepared By:

Board of Water and Soil Resources

Dated:

March 15th, 2011

LEGEND



Center of Section



Boundary of Described Lands



Lands Included in Easement



Lands Not Included in Easement



Section/Quarter/Sixteenth Line

DOC A 355842

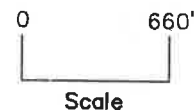
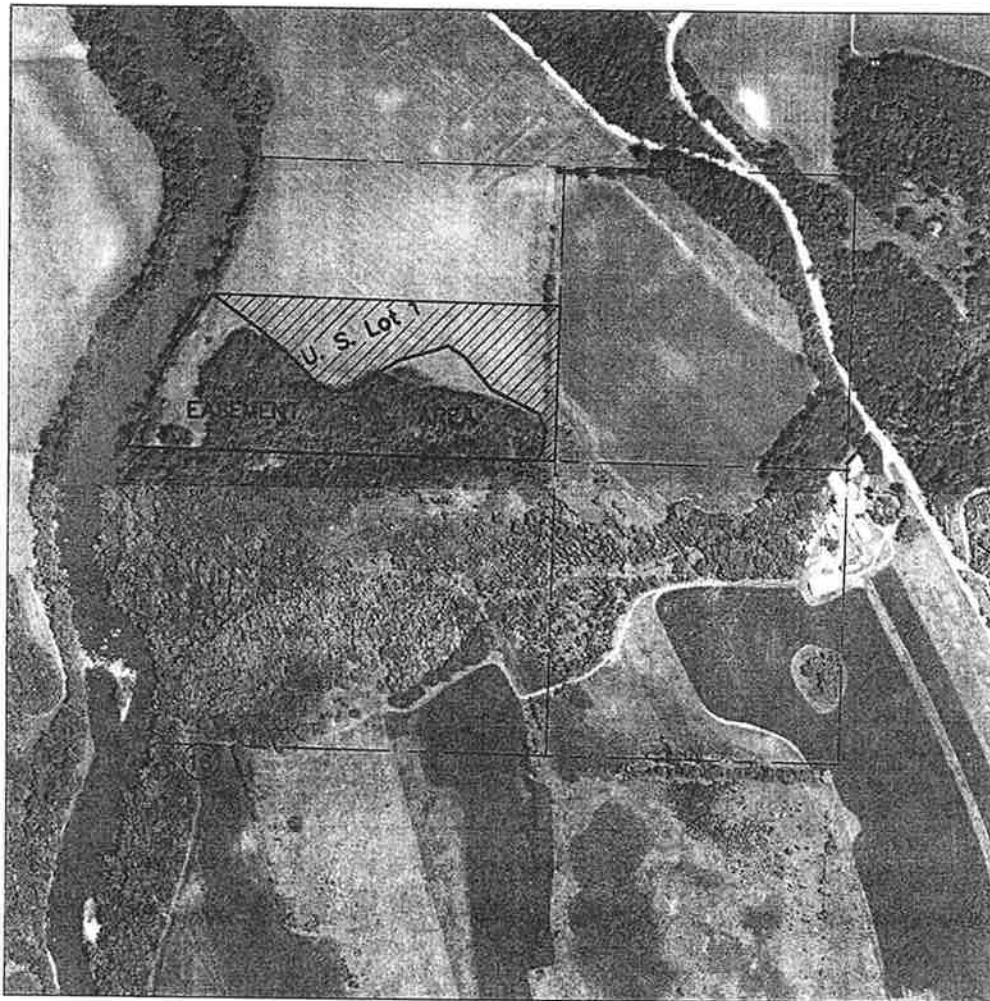
Easement I.D. No: 65-03-09-07

Map 1 of 1

STATE OF MINNESOTA
BOARD OF WATER AND SOIL RESOURCES
CONSERVATION EASEMENT
EXHIBIT 'A'

This map delineates the easement area(s) referred to in the attached easement conveyance. *This is not a legal survey, and not intended for use as a survey plat.*

Section 16 T. 114 N., R. 37 W., Renville County



Prepared By:

Board of Water and Soil Resources

Dated:

November 19, 2009

LEGEND



Center of Section



Boundary of Described Lands



Lands Included in Easement



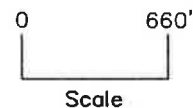
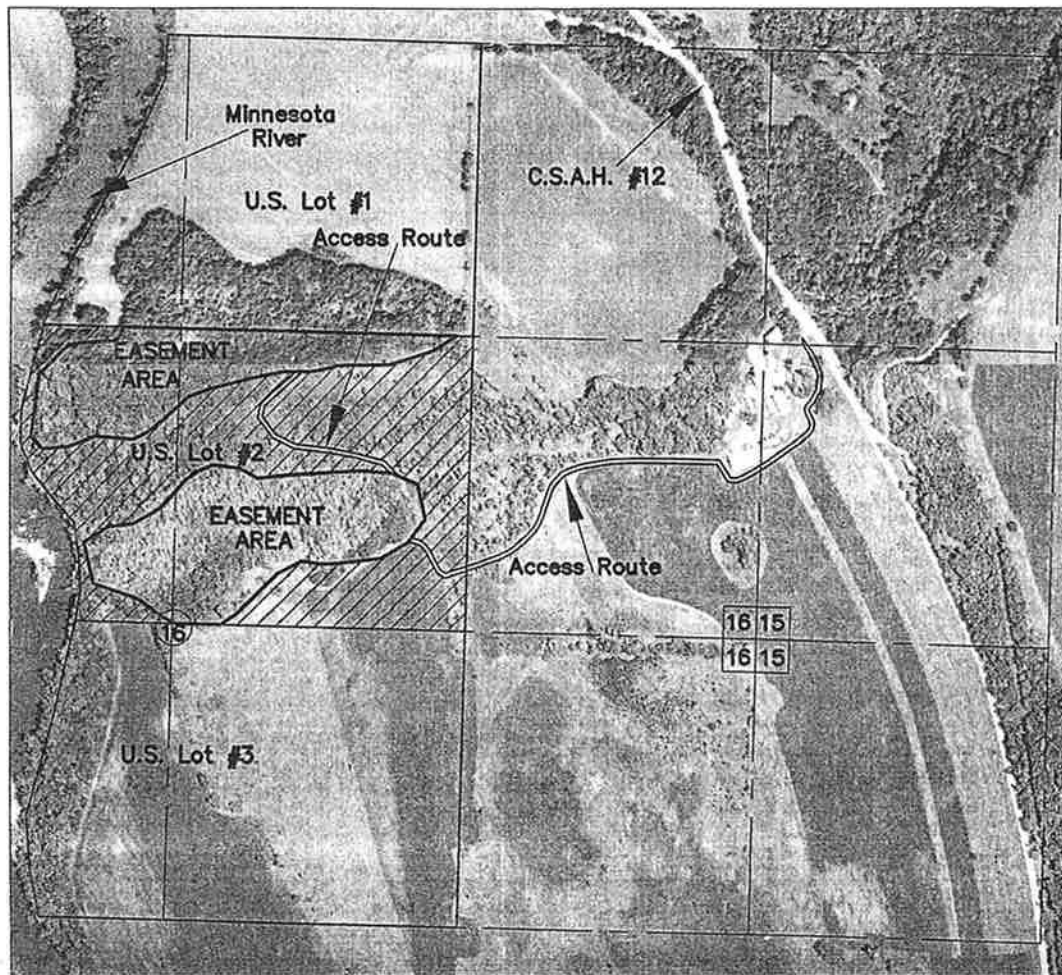
Lands Not Included in Easement

Section/Quarter/Sixteenth Line

STATE OF MINNESOTA
BOARD OF WATER AND SOIL RESOURCES
CONSERVATION EASEMENT
EXHIBIT 'A'

This map delineates the easement area(s) referred to in the attached easement conveyance. *This is not a legal survey, and not intended for use as a survey plat.*

Section 16 T. 114 N., R. 37 W., Renville County



Prepared By:

Board of Water and Soil Resources

Dated:

August 20th, 2010

LEGEND



Center of Section



Boundary of Described Lands



Lands Included in Easement



Lands Not Included in Easement



Section/Quarter/Sixteenth Line

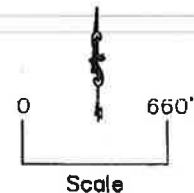
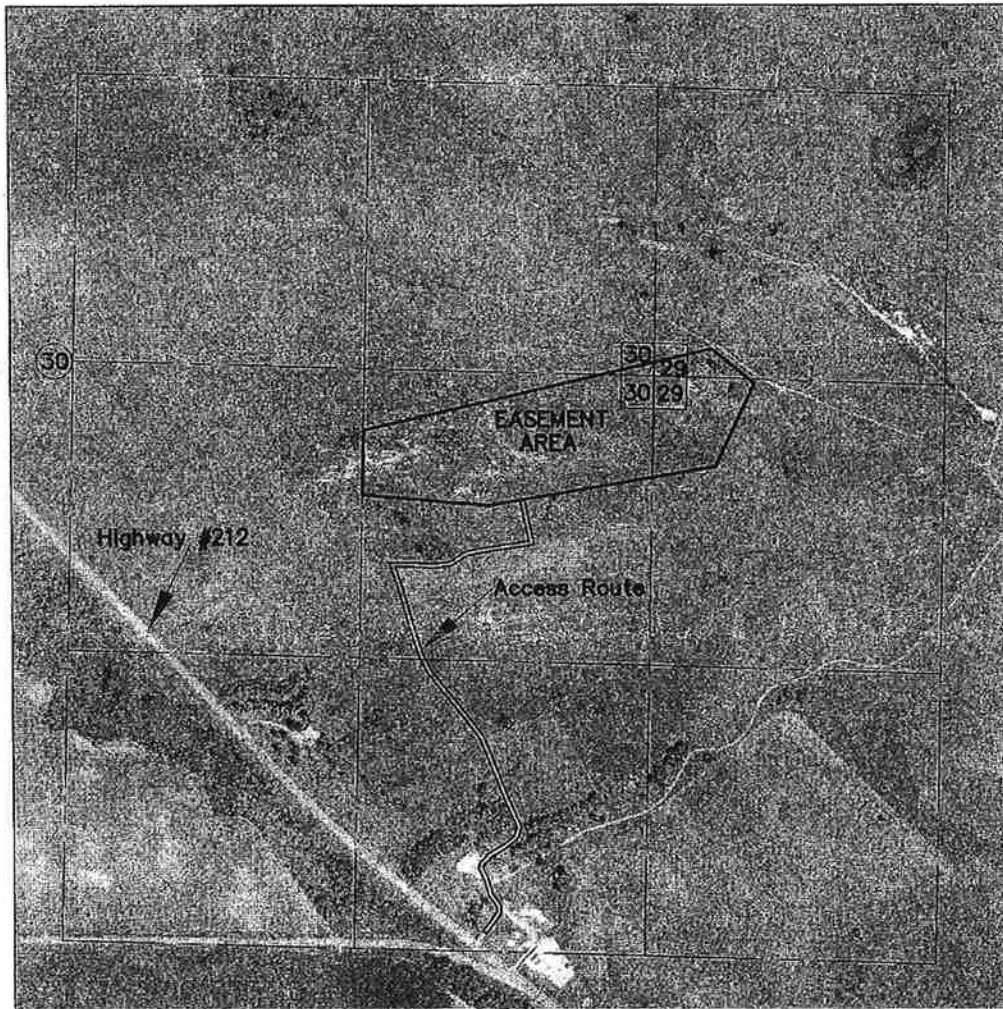
Easement I.D. No: 87-01-09-07

Map 1 of 1

STATE OF MINNESOTA
BOARD OF WATER AND SOIL RESOURCES
CONSERVATION EASEMENT
EXHIBIT 'A'

This map delineates the easement area(s) referred to in the attached easement conveyance. *This is not a legal survey, and not intended for use as a survey plat.*

Section 29/30T. 116 N., R. 39 W., Yellow Medicine County



Prepared By:

Board of Water and Soil Resources

Dated:

November 9th, 2009

LEGEND



Center of Section



Boundary of Described Lands



Lands Included in Easement



Lands Not Included in Easement

Section/Quarter/Sixteenth Line

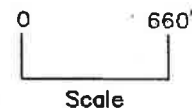
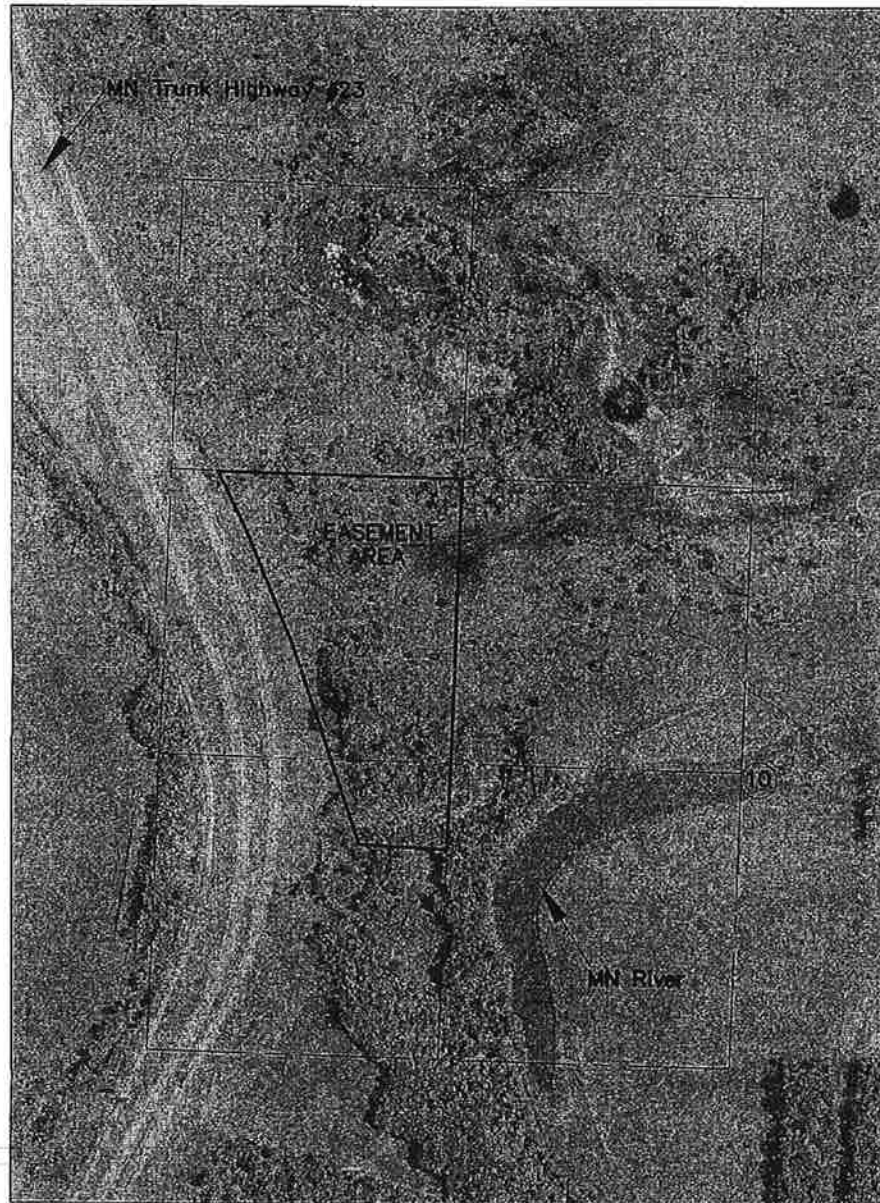
Easement I.D. No: 87-02-09-07

Map 1 of 1

STATE OF MINNESOTA
BOARD OF WATER AND SOIL RESOURCES
CONSERVATION EASEMENT
EXHIBIT 'A'

This map delineates the easement area(s) referred to in the attached easement conveyance. *This is not a legal survey, and not intended for use as a survey plat.*

Section 10 T. 115 N., R. 39 W., Yellow Medicine County



Prepared By:

Board of Water and Soil Resources

Dated:

November 16th, 2009

LEGEND



Center of Section



Boundary of Described Lands



Lands Included in Easement



Lands Not Included in Easement

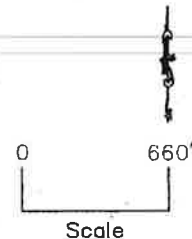
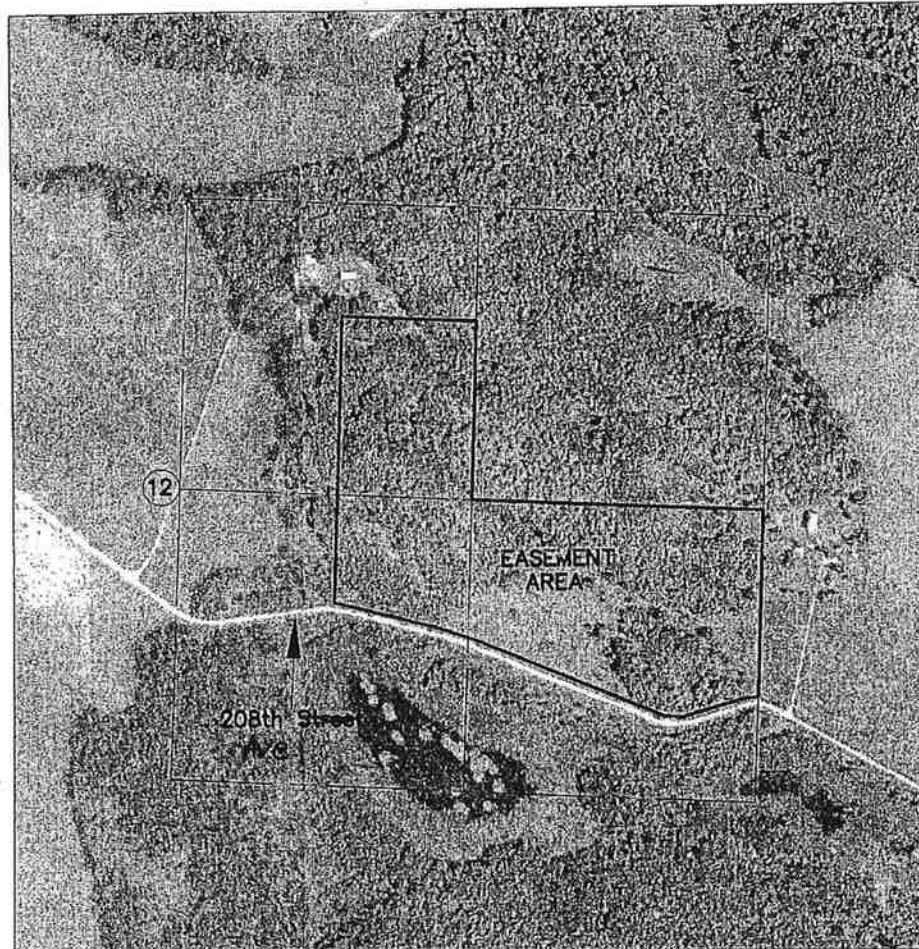


Section/Quarter/Sixteenth Line

STATE OF MINNESOTA
BOARD OF WATER AND SOIL RESOURCES
CONSERVATION EASEMENT
EXHIBIT 'A'

This map delineates the easement area(s) referred to in the attached easement conveyance. *This is not a legal survey, and not intended for use as a survey plat.*

Section 12 T. 114 N., R. 38 W., Yellow Medicine County








Prepared By:

Board of Water and Soil Resources

Dated:

December 8th, 2009

LEGEND

-  Center of Section
-  Boundary of Described Lands
-  Lands Included in Easement
-  Lands Not Included in Easement
-  Section/Quarter/Sixteenth Line

Easement I.D. No: 87-04-09-07

Map 1 of 1

STATE OF MINNESOTA
BOARD OF WATER AND SOIL RESOURCES
CONSERVATION EASEMENT
EXHIBIT 'A'

This map delineates the easement area(s) referred to in the attached easement conveyance. *This is not a legal survey, and not intended for use as a survey plat.*

Section 4/5 T. 115 N., R. 39 W., Yellow Medicine County

