

2009 Project Abstract

For the Period Ending June 30, 2011

TITLE: Metro Conservation Corridors – Phase V
Overall Summary

PROJECT MANAGER: Sarah Strommen

ORGANIZATION: Minnesota Land Trust

ADDRESS: 2356 University Avenue West, Suite 240
St. Paul, MN 55114

WEB SITE ADDRESS: www.dnr.state.mn.us/metroconservationcorridors

FUND: Environmental and Natural Resources Trust Fund

LEGAL CITATION: Minnesota Laws 2009, Chapter 143, Section 2, Subdivision 4(f)

APPROPRIATION AMOUNT: \$3,375,000

OVERALL PROJECT OUTCOME AND RESULTS

During the fifth phase of the Metro Corridors project, the Metro Conservation Corridors Partners continued their work to accelerate protection and restoration of remaining high-quality natural lands in the greater Twin Cities Metropolitan Area by strategically coordinating and focusing conservation efforts within a connected and scientifically-identified network of critical lands. This corridor network stretches from the area's urban core to its rural perimeter, including portions of 16 counties.

The Partners employed a multi-faceted approach, which included accomplishments in four specific result areas.

1. Partnership and Program Coordination: Partners met several times a year to review project accomplishments and coordinate activity. With DNR support, Version 2 of the online database was refined and implemented to facilitate tracking and reporting of MeCC projects over time. Additionally, DNR and Minnesota Land Trust have worked together to complete cumulative accomplishment mapping, gathering as much information as possible from previous grant phases, which allows the partnership to conduct historical analysis of our collective work.

2. Restore and Enhance Significant Habitat: Partners have restored and enhanced a total of 775 acres of significant habitat using Phase V funding plus an additional 450 acres with other funds.

3. Acquire Significant Habitat: Partners protected 977 acres of land, including nearly 7 miles of shoreline through acquisition of fee title and conservation easements and leveraged an additional 585 acres of land and 0.4 miles of shoreline using other funds.

4. Other Conservation Tools and Incentives: The Metro Greenways Program assisted eight cities, two counties, and one park district with the development and gathering of natural resources information to identify sites for protection or restoration and/or to implement conservation measures. Additionally, Metro Greenways organized and facilitated two annual events that brought all 25 DNR Community Assistance grantees together for a day of information-sharing and peer-to-peer learning, and also funded the development and offering of six new natural resource-based workshops for local government staff and appointed officials.

Since 2003, MeCC partners have protected more than 9,600 acres and restored more than 7,800 acres. These strategic and coordinated efforts address a number of recommendations of the Statewide Conservation and Preservation Plan, including, protecting priority land habitats, protecting critical shorelands of streams and lakes, restoring land, wetlands, and wetland-associated watersheds, and improving connectivity and access to outdoor recreation.

PROJECT RESULTS USE AND DISSEMINATION

As projects were completed, the individual partners were encouraged to publicize accomplishments through press releases, organization newsletters and websites. These efforts resulted in information being distributed to the public through websites, email lists, daily and weekly newspapers, newsletters, and other print materials. Additionally, an interactive public web map is now fully functional and shows the locations of MeCC projects over time. This web map can be accessed at:
<http://www.dnr.state.mn.us/maps/MeCC/mapper.html>.

Environmental and Natural Resources Trust Fund 2009 Work Program Final Report

Date of Report: September 20, 2011

Final Report

Date of Work program Approval: June 16, 2009

Project Completion Date: June 30, 2011

I. PROJECT TITLE: Metro Conservation Corridors Phase V: Overall Summary

Project Manager: Sarah Strommen

Affiliation: Minnesota Land Trust

Mailing Address: 2356 University Ave. W, Suite 240

City / State / Zip : St. Paul, MN 55114

Telephone Number: 651-647-9590

E-mail Address: sstrommen@mnland.org

FAX Number: 651-647-9769

Web Page address: <http://www.dnr.state.mn.us/metroconservationcorridors> or
www.mnland.org

Location: Within mapped focus areas in 16 counties (see 2009 Focus Area map)

Total Trust Fund Project Budget:	Trust Fund Appropriation:	\$	3,375,000
	Minus Amount Spent:	\$	<u>3,149,904</u>
	Equal Balance:	\$	225,096

Legal Citation: M.L. 2009, Chapter 143, Section 2, Subdivision 4(f)

Appropriation Language:

\$3,375,000 is from the trust fund to the commissioner of natural resources for the fifth appropriation for acceleration of agency programs and cooperative agreements. Of this appropriation, \$2,185,000 is for Department of Natural Resources agency programs and \$1,190,000 is for agreements as follows: \$380,000 with the Trust for Public Land; \$90,000 with Friends of the Mississippi River; \$155,000 with Great River Greening; \$250,000 with Minnesota Land Trust; \$225,000 with Minnesota Valley National Wildlife Refuge Trust, Inc.; and \$90,000 with Friends of the Minnesota Valley for the purposes of planning, restoring, and protecting important natural areas in the metropolitan area, as defined under Minnesota Statutes, section 473.121, subdivision 2, and portions of the surrounding counties, through grants, contracted services, technical assistance, conservation easements, and fee title acquisition. Land acquired with this appropriation must be sufficiently improved to meet at least minimum management standards as determined by the commissioner of natural resources. Expenditures are limited to the project corridor areas as defined in the work program. This appropriation may not be used for the purchase of residential structures, unless expressly approved in the work program. All conservation easements must be perpetual and have a natural

resource management plan. Any land acquired in fee title by the commissioner of natural resources with money from this appropriation must be designated as an outdoor recreation unit under Minnesota Statutes, section 86A.07. The commissioner may similarly designate any lands acquired in less than fee title. A list of proposed restorations and fee title and easement acquisitions must be provided as part of the required work program. All funding for conservation easements must include a long-term stewardship plan and funding for monitoring and enforcing the agreement. To the maximum extent practical, consistent with contractual easement or fee acquisition obligations, the recipients shall utilize staff resources to identify future projects and shall maximize the implementation of biodiverse, quality restoration projects in the project proposal into the first half of the 2010 fiscal year.

II. and III. FINAL PROJECT SUMMARY:

During the fifth phase of the Metro Corridors project, the Metro Conservation Corridors Partners continued their work to accelerate protection and restoration of remaining high-quality natural lands in the greater Twin Cities Metropolitan Area by strategically coordinating and focusing conservation efforts within a connected and scientifically-identified network of critical lands. This corridor network stretches from the area's urban core to its rural perimeter, including portions of 16 counties.

The Partners employed a multi-faceted approach, which included accomplishments in four specific result areas.

- 1. Partnership and Program Coordination:* Partners met several times a year to review project accomplishments and coordinate activity. With DNR support, Version 2 of the online database was refined and implemented to facilitate tracking and reporting of MeCC projects over time. Additionally, DNR and Minnesota Land Trust have worked together to complete cumulative accomplishment mapping, gathering as much information as possible from previous grant phases, which allows the partnership to conduct historical analysis of our collective work.
- 2. Restore and Enhance Significant Habitat:* Partners have restored and enhanced a total of 775 acres of significant habitat using Phase V funding plus an additional 450 acres with other funds.
- 3. Acquire Significant Habitat:* Partners protected 977 acres of land, including nearly 7 miles of shoreline through acquisition of fee title and conservation easements and leveraged an additional 585 acres of land and 0.4 miles of shoreline using other funds.
- 4. Other Conservation Tools and Incentives:* The Metro Greenways Program assisted eight cities, two counties, and one park district with the development and gathering of natural resources information to identify sites for protection or restoration and/or to implement conservation measures. Additionally, Metro Greenways organized and facilitated two annual events that brought all 25 DNR Community Assistance grantees together for a day of information-sharing and peer-to-peer learning, and also funded the development and offering of six new

natural resource-based workshops for local government staff and appointed officials.

Since 2003, MeCC partners have protected more than 9,600 acres and restored more than 7,800 acres. These strategic and coordinated efforts address a number of recommendations of the Statewide Conservation and Preservation Plan, including, protecting priority land habitats, protecting critical shorelands of streams and lakes, restoring land, wetlands, and wetland-associated watersheds, and improving connectivity and access to outdoor recreation.

IV. OUTLINE OF PROJECT RESULTS:

Result 1: Database Development, Project Tracking, Mapping and Coordination

Description: This result proposed to provide assistance in coordinating the conservation efforts of the partners through facilitating partnership meetings and providing overall work program management. It also included development of a GIS-based database to track MeCC projects and an improved web map where the public can see locations of completed projects.

Summary Budget Information for Result 1:	Trust Fund Budget:	\$ 100,000
	Amount Spent:	\$ 50,924
	Balance:	\$ 49,076

Deliverable	Status
1. Complete overall work programs as required	Complete
2. Facilitate partner and executive meetings	Complete
3. MeCC Database Version 2	Complete
4. Generate overall tables from the database	Complete
5. MeCC Corridor Map	Complete
6. MeCC Database maintenance reimbursement	Complete

**This amount includes Deliverable #2.*

Final Completion Date: 6/30/2011

Final Report Summary: The Mapping and Coordination element of the MeCC Partnership provided coordination and leadership for the partnership by Minnesota Land Trust staff and improved prioritization through enhanced database development and mapping of the corridors by DNR staff.

During this phase of work, the coordination activity included regular meetings of the partners to share information and accomplishments, assisting partners with preparation of reports, compiling overall partnership results, and assisting DNR staff

with the mapping, database development, and results tracking. The mapping activity included successful development and refinement of a GIS-based database to track historic and current MeCC projects. The database allows partners to generate tables and reports for status and accomplishment reporting for a variety of MeCC components – from project types, to funding sources, to activities, to partnerships, to location analysis. It also links to an interactive web map where the public can see the locations of completed projects.

Although the partnership had originally hoped to complete a mini-evaluation of the MeCC Partnership, due to the time involved in mapping and compiling historic project data, there was not time to complete the evaluation. Therefore, funds originally allocated for this activity were not spent.

Result 2: Restore and Enhance Significant Habitat

Description: The six restoration partner organizations proposed to restore and/or enhance 465 acres of significant upland and wetland habitat and 0.6 miles of shoreline. The partnership’s restoration work strived to reconnect a highly fragmented urban and urbanizing landscape through re-establishing and planting native communities in critical locations, by upgrading existing native communities, and addressing the pervasive issue of invasive species. Site priorities were key upland or riparian habitats that serve to buffer existing habitat patches and to reconnect significant habitat patches in the regional landscape.

Summary Budget Information for Result 2:

Trust Fund Budget:	\$ 650,000
Amount Spent:	\$ 637,981
Balance:	\$ 12,019

Deliverable	Status
1. Restore 465 acres and 0.6 miles of shoreline	Complete

Final Completion Date: 6/30/2011

Final Report Summary: Six partner organizations restored approximately 775 acres of significant upland and wetland habitat and 0.44 mile of shoreline with Phase V funding, as well as an additional 450 acres and 0.46 miles of shoreline through other funds. Restoration activities have taken place on SNAs, WMAs, USFWS property, and Regional Park lands, as well as other significant lands.

A summary of each sub-result is provided below. For additional information and details on projects and expenditures, please see Tables A and B and the individual final reports.

2.1: Restore/Enhance significant watershed habitat – Friends of the Mississippi River

Friends of the Mississippi River restored/enhanced a total of 242 acres with Phase V funding and an additional 126 acres with non-state funding. FMR exceeded all of

their goals committed to in the original proposal by restoring an additional 192 acres with Phase V funding and leveraging 96 additional acres and \$5,323 more than originally proposed.

Restoration work was completed at the following sites:

- Pine Bend Bluffs SNA
- Riverside Park
- Hastings Sand Coulee Prairie SNA
- Crosby Park
- Rosemount Wildlife Preserve
- Wilmar Property
- Katharine Ordway Natural History Study Area
- Hastings River Flats Park
- Gores Pool WMA / Freitag
- Ravenna Block greenway
- Emrick property

2.2: Lower Minnesota Watershed Restoration and Enhancement Project – Friends of the Minnesota Valley

Friends of the Minnesota Valley and its partners were able to successfully restore and enhance 17 acres of native wet prairie, 48 acres of native dry sand-gravel oak savanna, and 28 acres of native dry sand-gravel prairie with Phase V funding for a total acreage of 93 acres. An additional 59 acres of native dry sand-gravel oak savanna was restored with non-LCCMR, non-state funds. Accomplishments include the following:

- St. Lawrence Unit: 17 acres of native wet prairie habitat were successfully restored and enhanced by removing invasive woody brush species such as buckthorn, honeysuckle, and prickly ash.
- Upgrala Unit: 7 acres of native dry sand-gravel prairie were successfully restored by cutting and herbicide treatment of non-native woody species.
- Rapids Lake Unit: 21 acres of native dry sand-gravel prairie and 34 acres of native dry sand-gravel oak savanna were successfully restored and enhanced by cutting and herbicide treatment of non-native woody species.
- Louisville Swamp Unit: 59 acres of native dry sand-gravel oak savanna was restored and enhanced by treating invasive woody brush species.

2.3: Restore/Enhance significant Habitat – Great River Greening

Great River Greening exceeded its goal by restoring and enhancing a total of 204 acres of habitat with Phase V funding and an additional 140 acres with more than \$153,000 in leveraged non-state funds. Restoration and enhancement projects occurred on habitats of prairie, savanna, and forest, including nine native plant communities with biodiversity significance as identified by MCBS, providing habitat for 18 documented rare plant species. Volunteers contributed over 2,500 hours to these habitat projects.

Restoration/enhancement activities were completed at the following sites:

- Arcola Mills Historic Foundation (Stillwater)
- St Croix Valley (Taylors Falls and Marine locations)
- Spring Lake Regional Park (Scott County)
- Spring Lake Park Reserve (Dakota County)
- Hidden Valley Park (Savage)
- Snail Lake Regional Park (Shoreview)
- St. Croix Savanna SNA (Bayport)
- Lost Valley Prairie SNA (Denmark Township)
- Pond Dakota Mission (Bloomington)
- Pilot Knob Hill (Mendota Heights)
- Lake Edith site (Afton)
- Central Corridor (Woodbury and Cottage Grove)
- Eagle Creek AMA (Savage)
- Heritage Village Park (Inver Grove Heights)
- OH Anderson Elementary (Mahtomedi)

2.4: Habitat/Enhancement Grants – DNR Metro Greenways

Five restoration grants totaling \$90,000 were awarded to three counties and one city. A total of approximately 255 acres of city, county, and regional park lands were restored to native vegetation, primarily prairie and savanna. Two projects came in under budget, resulting in a balance of \$10,907. Grantees contributed \$91,667 in local in-kind to project completions (1:1 match). The average cost of restoration for all five projects, including both grant funding and local in-kind match, was \$678/acre.

Projects include the following accomplishments:

- Becklin Homestead County Park, Isanti County: 50 acres of the county park/WMA were restored to oak savanna ecotype
- Lebanon Hills Regional Park, Dakota County: 25 acres were restored to savanna
- Miesville Ravine Regional Park, Dakota County: The Six Prairies Project restored a total of 151 acres to prairie
- Sunfish Lake Park, City of Lake Elmo: 20 acres was restored to prairie
- Crow Hassan Park Reserve, Three Rivers Park District: 9 acres site restored to native prairie

2.5: Scientific & Natural Area Restoration and Enhancement – DNR Ecological Services

DNR Ecological Services successfully completed restoration and enhancement activities on 187 acres, resulting in native habitat enhancement at 13 Scientific and Natural Areas (SNA) in 7 counties:

- Cannon River Turtle Prairie SNA – Goodhue County
- Clear Lake SNA – Sherburne County
- Falls Creek SNA – Washington County
- Grey Cloud Dunes SNA – Washington County
- Hastings Sand Coulee SNA- Dakota County

- Lost Valley Prairie SNA – Washington County
- Savage Fen SNA – Scott County
- Seminary Fen SNA – Carver County
- Spring Creek Prairie SNA – Goodhue County
- St. Croix Savanna SNA – Washington County
- Uncas Dunes SNA – Sherburne County
- Wolsfeld Woods SNA – Hennepin County
- Wood-Rill SNA – Hennepin County

2.6: Stream Habitat Restoration – DNR Fisheries & Wildlife

DNR Fish & Wildlife completed stream habitat restoration work on 0.9 miles of Vermillion River channel. As part of this project, Environmental and Natural resources Trust dollars (\$150,000) restored 0.44 miles of the total. Other State dollars (OHF = \$140,000) restored 0.41 miles, and other funding (Vermillion River Watershed = \$20,000) restored 0.05 miles of the total.

Result 3: Acquire Significant Habitat

Description: The nine partner organizations proposed to protect at least 652 acres of regionally significant habitat. This was accomplished through acquisition of conservation easements or fee title acquisition by the funded Metro Corridors partners, as well as through matching grants to local units of government and/or non-profits qualified to own and manage land. Partners applied a suite of criteria to select and prioritize for sites for funding within the Focus Areas, including: (1) site is located within, buffers, or connects to a regionally significant ecological area; (2) site contains rare species or plant communities, (3) site protects surface and ground water quality and/or supply, (4) site is threatened by development pressure and fragmentation, degradation, or loss, (5) site offers opportunities for compatible public uses, (6) site has a committed landowner who is willing and ready to sell or donate fee title or easement; (7) site has a committed land steward who will purchase fee title or easement and support stewardship and monitoring of the land; (8) site has a feasible funding strategy that leverages non-state funds to protect water quality and natural lands; and (9) site conservation is only possible through a partnership arrangement.

Summary Budget Information for Result 3: Trust Fund Budget: \$ 2,330,000
Amount Spent: \$ 2,190,820
Balance: \$ 139,180

Deliverable	Status
1. Acquire 652 acres	Complete

Final Completion Date: 6/30/2011

Final Report Summary: Six partners acquired fee title or conservation easements on 21 sites, protecting a total of 977 acres and nearly 7 miles of shoreline.

Acquisition of an additional 585 acres and 0.4 mile of shoreline was completed using other funds.

A summary of each sub-result is provided below. For additional information and details on projects and expenditures, please see Tables A and B and the individual final reports.

3.1: Critical Land Protection Program fee title & conservation easement acquisition-The Trust for Public Land

The Trust for Public Land (TPL) successfully secured fee title on 21.63 ENRTF acres of 402 total acquired acres. TPL then conveyed these lands to public agencies for permanent protection. Individual project successes include:

- Allemansratt Wilderness Park: \$318,000 2009 ENRTF funds were used to protect 14.43 ENRTF acres of land as part of a larger 64-acre purchase of shoreline designated by the MN DNR as a “regionally significant ecological area.” TPL conveyed the land to the City of Lindstrom to create the Allemansratt Wilderness Park.
- Cedar Creek Conservation Area: \$62,000 2009 ENRTF funds were used to protect 7.2 ENRTF acres of land as part of a 338-acre acquisition of one of the largest undeveloped and contiguous tracts of open space in the Twin Cities Metro Area. TPL then conveyed the land to Anoka County.

TPL leveraged \$380,000 in 2009 ENRTF funding with \$992,000 in non-state funds to protect 87.79 additional pro-rated acres of land. Additionally, \$500,000 in state remediation grant funds, \$1,900,000 in Outdoor Heritage Funds, \$338,000 in TPL’s 2010 ENRTF funds, and \$200,000 in DNR’s 2008 ENRTF funds were used to purchase the remainder of the property, totaling 402 acres. Since a portion of TPL’s 2010 ENRTF funding was used for the Cedar Creek Conservation Area project, a portion of these results will also be reflected in TPL’s 2010 MeCC Work Program update and Final Report.

3.2: Protecting significant habitat by acquiring conservation easements – Minnesota Land Trust

The Minnesota Land Trust successfully completed eight perpetual conservation easements that collectively protect 765 acres of land and more than 33,000 feet of shoreline. Three easements were purchased, and the remaining five easements were donated. While two of the purchased easements used both 2009 and 2010 ENRTF funding, accomplishments are reported only as part of the 2009 report, and will not be reported in future 2010 reports to avoid double-counting. Values are known for only five of the eight easements acquired, and this value totals \$854,500, with a known donated value of \$413,500. The cost to the State of Minnesota to complete these projects was just over \$326 per acre.

All eight projects represent unique opportunities to protect high quality natural habitat, riparian areas, and to build upon prior land protection work by the Land Trust at several priority sites:

- Deer Lake: 45 acre property, Anoka County

- Elk River: 148-acre property, Sherburne County
- Camp Kingswood: 44-acre property, Hennepin County
- Hardwood Creek: 157-acre property, Washington County
- Scandia: 5-acre property, Washington County
- Valley Creek: 126-acre property, Washington County
- Wild River State Park: 39-acre property, Chisago County
- Bay Point Park: 201-acre property, Goodhue County

3.3: Fee Acquisition for the MN Valley National Wildlife Refuge – Minnesota Valley National Wildlife Refuge Trust, Inc.

The Minnesota Valley Trust acquired 96 acres of priority lands in the Minnesota River Valley floodplain in Sibley County to expand the Jessenland Unit of the Minnesota Valley National Wildlife Refuge. Of the 96 acres acquired, the Environment and Natural Resources Trust Fund paid for 90 acres and the Minnesota Valley Trust paid for 6 acres with nonprofit / other non-state funds.

Using other non-state funds, the Minnesota Valley Trust also acquired 44.67 acres of priority lands in the Minnesota River Valley in Scott County to expand the Blakely Unit of the Minnesota Valley National Wildlife Refuge. The Blakely and Jessenland Units are on opposite (facing) sides of the Minnesota River and, together, form a large contiguous block of priority wildlife habitat.

3.4: Grants & Acquisition of fee title & conservation easements – Minnesota Department of Natural Resources – Metro Greenways

Six protection projects were awarded a total of \$650,000. However, only three projects were initiated and completed (Lindstrom, Grannis, and Niebur), resulting in the protection of just 120 acres of the 325 acre projected target for Metro Greenways.

- Allemansratt Wilderness Park: Lindstrom’s new 64-acre park honors its name, which means “every man’s right” to walk anywhere. Situated amid several lakes, the new park will provide the residents of northern metro with the opportunity to explore a deciduous hardwood forest. Note that Trust for Public Land was the lead for this acquisition project and acres and match are included in their numbers only in the attached Table A in order to avoid double counting.
- Grannis and Nieber properties: Two grants to Dakota County added a total of 56 acres under conservation easements to its green infrastructure network being created by the Farmland and Natural Areas Program.

Unfortunately, a \$200,000 grant to Anoka Conservation District did not materialize and the funds were transferred to the DNR’s Scientific and Natural Areas Program via an amendment; a \$10,000 grant awarded to Chanhassen was denied by the city and these funds were put toward the Grannis project in Dakota County; and an \$80,000 balance remained when Washington County notified the DNR in 2011 that its project would not move ahead. As a result, the target for this result was not met, with only 120 acres protected for \$370,000.

3.5: DNR Fish & Wildlife Acquisition – Minnesota Department of Natural Resources – Fisheries & Wildlife

DNR Fish & Wildlife completed two fee title acquisition parcels on the Vermillion River in Dakota County and two fee title acquisition parcels on Eagle Creek in Scott County. The combined total for all four acquisitions is 50.5 acres with 1.08 miles of shoreline. One of the parcels on the Vermillion River was also paid for with other ENRTF funds, resulting in both acres and miles being divided proportionately between the two phases. 2009 ENRTF dollars (\$350,000) directly acquired approximately 38.8 acres of the total, including 0.69 miles of stream. Donation of value (\$106,800) accounted for approximately 11.7 acres, including 0.4 miles of stream.

3.6: Scientific & Natural Areas (SNA) Acquisition – Minnesota Department of Natural Resources – Ecological Services

DNR Ecological Services successfully acquired 148.5 acres of high quality native habitat threatened by urban development that expanded two metro Scientific and Natural Areas (SNAs). In the first acquisition, 80 acres were acquired (36.7 acres pro-rated to this appropriation) and added to the Hastings Sand Coulee SNA. The addition contains native oak savanna and prairie and increases this SNA to 267 acres, protecting more than half of the largest remaining prairie complex in Dakota County, home to 13 resident rare species (including 3 snake and 2 butterfly species).

The second acquisition protects 68.5 acres of habitat (6.2 acres pro-rated to this appropriation) added to Savage Fen SNA in Scott County. This site offers urban residents close-to-home nature-based recreation, including a new archery hunting opportunity on 300 acres at Savage Fen SNA and public fishing frontage on the Credit River.

Result 4: Outreach

Description: The Metro Greenways Program, with partnership input, proposed to provide matching grants to about 10-15 communities to assist them in developing and gathering needed natural resources information to identify sites for protection or restoration and/or to implement conservation measures for already identified natural areas. Community selection was based on established selection criteria, including: communities that have remaining high quality land cover types or sensitive wetlands, shore land, or aquatic habitats that are relatively unimpaired; rapid growth and projected increases in impervious surface area; ability to provide cash or in-kind project support; willingness to incorporate project deliverables into local planning and implementation decisions; willingness to work across jurisdictional boundaries to accomplish conservation outcomes. Fast growth communities with high value natural resources that contact the program, seeking assistance with well-conceived projects, were especially desirable recipients for these grants. Anticipated deliverables included: land cover data (MLCCS) for critical natural areas; natural resources data compilation and assessment for direct application; integration of conservation strategies into comprehensive and other local plans; ordinance revision

to afford greater protection of natural resources; and identification of various conservation approaches to be applied locally.

Summary Budget Information for Result 4:	Trust Fund Budget:	\$ 295,000
	Amount Spent:	\$ 270,179
	Balance:	\$ 24,821

Deliverable	Status
1. 10-15 local government consultations/projects	Complete

Final Completion Date: 6/30/2011

Final Report Summary: Incentive grants were solicited and awarded through DNR’s Community Conservation Assistance (CCA) Program to 13 cities and counties. All projects were completed, although two projects relinquished good portions of their grant awards due to insufficient time. Projects included:

- Corcoran – new and updated zoning ordinances
- Hugo – natural resource inventory
- Lake Elmo – forest assessment & management plan for Sunfish Lake Park
- Lakeland – updating ordinances and community outreach
- Minneapolis – urban tree canopy mapping and management plan
- North Branch – land cover inventory using MLCCS
- Princeton – Rum River recreational area planning
- St. Paul – urban tree canopy mapping
- Scott County – natural resources planning for Blakely Bluff ecological corridor
- Scott County – development of a program to protect natural areas
- Sherburne County – land cover inventory using MLCCS for four townships
- Three Rivers Park District – forest assessment and management strategies for Murphy-Hanrehan Park

In addition to the grant-making, DNR’s Community Conservation Assistance manager organized and facilitated two annual events that brought all 25 DNR Community Assistance grantees together for a day of information-sharing and peer-to-peer learning. These gatherings were extremely well attended and received by the grantees. The DNR also convened its three city grantees that completed urban tree canopy (UTC) inventories, along with the University of Minnesota forestry and extension service, U.S. Forestry Service, and Minneapolis Park and Recreation Board to hear about each city’s findings and proposed applications of UTC data.

This third result area also funded the development and offering of six new natural resource-based workshops for local government staff and appointed officials. These workshops were offered in the metro area and were promoted by Government Training Services to its clientele (local government commissioners). Almost 235 local government staff and officials (62% from cities; 14% counties; 14% special districts and others; and 10% townships) attended these workshops on shoreland

conservation, stormwater management, and the incorporation of natural resources into land use planning and engineering design. The workshops all received excellent evaluations from attendees.

V. TOTAL TRUST FUND PROJECT BUDGET:

Please also see the attached Table B and individual final reports for additional detail.

Staff or Contract Services:	\$ 628,521
Equipment/Tools:	\$ 3,397
Restoration:	\$ 281,025
Acquisition, including easements:	\$1,920,597
Travel:	\$ 5,496
Other:	\$ 310,580

TOTAL TRUST FUND PROJECT BUDGET: \$3,149,904 (\$3,375,000 appropriated)

Explanation of Capital Expenditures Greater Than \$3,500: N/A

VI. OTHER FUNDS & PARTNERS:

A. Project Partners: Trust for Public Land, MN Land Trust, Friends of the Mississippi River, Friends of the Minnesota River, MN Valley National Wildlife Refuge Trust, Great River Greening, DNR Metro Greenways, DNR Fish and Wildlife, DNR SNA Program

B. Project Impact and Long-term Strategy: The Metro Conservation Corridors partnership works to accelerate protection and restoration of key natural lands in the metro area. Coordinating conservation efforts within this regional framework helps to increase the cost-effectiveness of our work by efficiently leveraging private and public partners and resources and building upon prior investments. The mapping function helps the partnership focus on areas with the greatest regional importance for habitat using state-of-the-art natural resource assessments and regional prioritization methods. Finally, development of a Metro Corridors database will allow the partnership to track its results history, assess progress, and identify opportunities to build upon prior protection and restoration work.

C. Other Funds Spent during the Project Period: Approximately \$2,530,000 in other non-state funds and \$182,000 in other state funds were proposed to be spent during the project period. Actual funds spent or leveraged were: \$4,071,900 of other state funds and \$4,540,303 of other non-state funds (see Table A).

D. Spending History: LCCMR appropriations only:

MeCC Phase I (2003) - \$4,500,000 (\$4,850,000 appropriated)

MeCC Phase II (2005) - \$3,529,655 (\$3,530,000 appropriated)

MeCC Phase III (2007) - \$2,465,225 (\$2,500,000 appropriated)

MeCC Phase IV (2008) – \$3,149,248 (\$3,150,000 appropriated)

VII. DISSEMINATION: As projects were completed, the individual partners were encouraged to publicize accomplishments through press releases, organization newsletters and websites. These efforts resulted in information being distributed to the public through websites, email lists, daily and weekly newspapers, newsletters, and other print materials. Additionally, an interactive public web map is now fully functional and shows the locations of MeCC projects over time. This web map can be accessed at: <http://www.dnr.state.mn.us/maps/MeCC/mapper.html>.

VIII. REPORTING REQUIREMENTS: Periodic work program progress reports were submitted not later than February 1st and August 1st of each year. This is the final work program report.

Metro Conservation Corridors 2009 - Phase V

Table A: Summary of Funding & Accomplishments

LCCMR Appropriated Dollars: **\$3,375,000**






Result / Activity	Partner	Project Funding						Accomplishments				
		ENRTF 2009 Funds			Other Funds		Total Project Funds Spent (ENRTF, Other State Funds & Non-State Funds combined)	ENRTF		Other Funds		Total Project Acres Completed (ENRTF & Other Funds combined)
		ENRTF 2009 Funds Allocated	ENRTF 2009 Funds Spent	ENRTF 2009 Funds Balance	Other State Funding Spent	Other Non-State Funding Spent		ENRTF 2009 Acres/Miles Completed	Other Funds Acres/Miles Completed			
										ACRES	MILES	
1. Coordinate MeCC Program												
1.1. Coordination of MeCC program, local outreach and conservation implementation assistance for two year project term	DNR and Minnesota Land Trust	\$100,000	\$50,924	\$49,076	\$0	\$0	\$50,924					-
2. Restore & Enhancement Significant Habitat												
2.1. Restore/enhance significant watershed habitat.	Friends of the Mississippi River	\$90,000	\$89,329	\$671		\$56,459	\$145,788	179		108		287
2.2. Lower Minnesota River Watershed Restoration & Enhancement Project.	Friends of MN Valley	\$90,000	\$89,979	\$21		\$83,190	\$173,169	93		59		152
2.3. Restore/enhance significant habitat.	Great River Greening	\$155,000	\$155,000	\$0		\$153,000	\$308,000	204		140		344
2.4. Habitat restoration/enhance grants.	DNR - Metro Greenways	\$100,000	\$89,093	\$10,907		\$10,680	\$99,773	112		143		255
2.5 Scientific & Natural Area (SNA) restoration & enhancement.	DNR - Ecological Services	\$65,000	\$64,580	\$420			\$64,580	187				187
2.6 Stream Habitat Restoration	DNR - Fisheries & Wildlife	\$150,000	\$150,000	\$0	\$140,000	\$20,000	\$310,000		0.44		0.46	-
SUBTOTAL		\$650,000	\$637,981	\$12,019	\$0	\$303,329	\$941,310	775	0.44	450	0.46	1,225
3. Acquire Significant Habitat												
3.1 Critical Land Protection Program fee title & conservation easement acquisition.	The Trust for Public Land	\$380,000	\$380,000	\$0	\$2,938,000	\$992,000	\$4,310,000	22		380		402
3.2. Protecting significant habitat by acquiring conservation easements.	Minnesota Land Trust	\$250,000	\$250,000	\$0	\$293,900	\$115,000	\$658,900	765	6.30			765
3.3. Fee acquisition for Mn Valley National Wildlife Refuge.	MN Valley NWR Trust, Inc.	\$225,000	\$225,000	\$0		\$150,701	\$375,701	90		51		141
3.4. Grants & acquisition of fee title & conservation easements.	DNR - Metro Greenways	\$543,045	\$462,978	\$80,067		\$277,473	\$740,451	19		37		56
3.5. DNR Fish & Wildlife Acquisition.	DNR - Fisheries & Wildlife	\$350,000	\$292,025	\$57,975		\$106,800	\$398,825	39	0.69	12	0.40	51
3.6. Scientific & Natural Area (SNA) Acquisition.	DNR - Ecological Services	\$581,955	\$580,817	\$1,138	\$840,000	\$2,595,000	\$4,015,817	43		106		149
SUBTOTAL		\$2,330,000	\$2,190,820	\$139,180	\$4,071,900	\$4,236,974	\$10,499,694	977	6.99	585	0.40	1,562
4. Community Conservation Assistance												
4.1 Assist local governments to promote the conservation of natural habitats.	DNR - Metro Greenways	\$295,000	\$270,179	\$24,821			\$270,179					
TOTAL		\$3,375,000	\$3,149,904	\$225,096	\$4,071,900	\$4,540,303	\$11,762,107	1,752	7.43	1,035	0.86	2,787

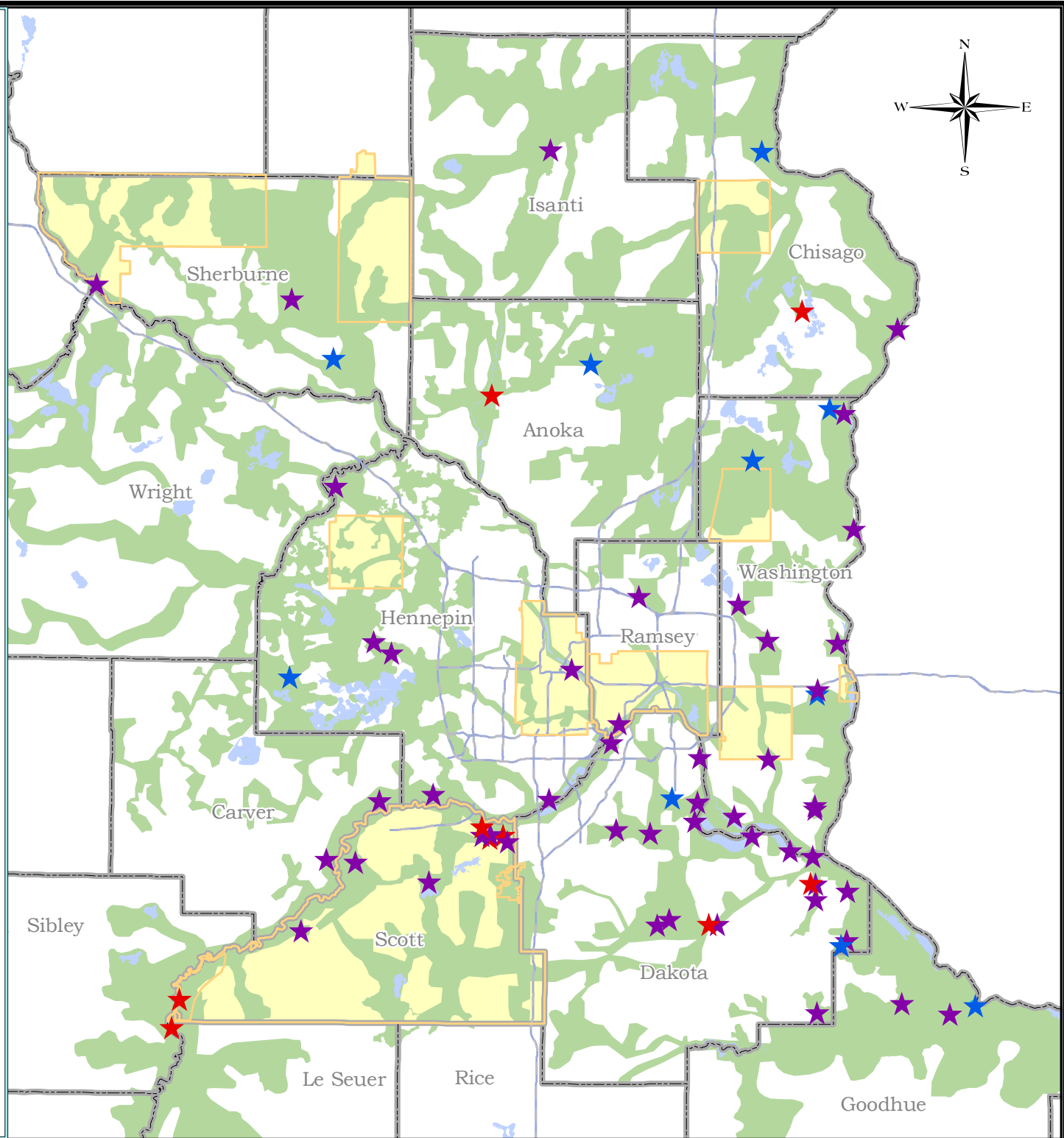
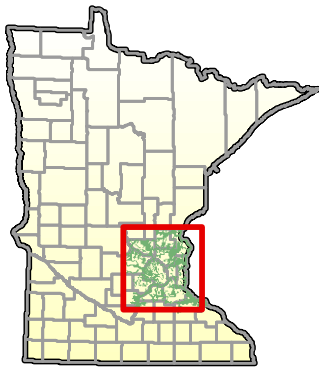
Metro Conservation Corridors 2009- Phase V
Table B: LCCMR Funding - Budget Detail
 Final Report

LCCMR Appropriated Dollars: \$3,375,000

Activity	Partners	LCCMR Funding Spent								Budget Explanation (staff/contractservices, development, equipment, other)	
		Staff/contract services	Equipm't	Developm't	Restoration	Acquisition	Travel	Other	Total		
1. Coordinate MeCC Program											
1.1. Coordination of MeCC program & local outreach and implementation assistance for two year project term	DNR OMBS w/ subcontract to Minnesota Land Trust & DNR Management Information Services	\$ 50,924								\$ 50,924	Staff from DNR Central Region for mapping support for two years; Contract to Minnesota Land Trust to cover a portion of the salaries and related benefits of staff working on coordination (approximately .25 FTE conservation program staff and other support staff), project-specific conference calls and travel
2. Restore & Enhance Significant Habitat											
2.1. Restore/enhance significant watershed habitat	Friends of the Mississippi River	\$ 11,871	\$ -	\$ -	\$ 76,896	\$ -	\$ 562			\$ 89,329	Restoration: Includes hiring contractors to conduct restoration and enhancement activities and purchasing supplies and materials.
2.2. Lower Minnesota River Watershed restoration & enhancement project	Friends of Minnesota Valley	\$ 64,989	\$ -	\$ -	\$ 24,990	\$ -	\$ -	\$ -		\$ 89,979	Staff/Contracts: Director of Conservation Programs for project coordination and implementation; Contracts for earth work, installing water control structures, breaking drain tile, etc.; Restoration: native plants and seed, trees, water control structures
2.3. Restore/enhance significant habitat	Great River Greening	\$ 49,149	\$ 1,473		\$ 93,614		\$ 3,095	\$ 7,669		\$ 155,000	Staff: Ecologists and Conservation Director; Field Manager; Volunteer Manager; Restorations Technicians; Project Administration. Restoration: Contracts for site prep, prairie seeding; plant, mulch, and seed purchase; travel within Minnesota. Equipment: Seed drill, mower, harrow, roller, sprayers, Rx burn eq't, saws, loppers, etc. Other: Volunteer event supplies (approved food and bevq. port. toilets, tent rentals etc.)
2.4. Habitat restoration/enhance. Grants	DNR - Metro Greenways	\$ 10,470	\$ -	\$ -	\$ 78,622	\$ -	\$ -	\$ -		\$ 89,093	Grants to LGU's and NGO's for restoration and enhancement and staff administration of grants
2.5. Scientific & Natural Area (SNA) restoration & enhancement	DNR - Ecological Services	\$ 55,498	\$ 1,924	\$ -	\$ 6,903	\$ -	\$ 255	\$ -		\$ 64,580	Staff/contract services: DNR SNA crew, MCC, and contractors selected through bid process as needed to complete restoration and development projects; Equipment: truck & equipment fleet charges & incidental parts; Restoration: restoration & development materials and supplies such as fencing, signs, gloves, PPE
2.6. Fish and wildlife stream habitat restoration	DNR - Fisheries & Wildlife	\$ 150,000								\$ 150,000	Staff/contract services: Professional/technical services and other restoration contracts
SUBTOTAL		\$ 341,977	\$ 3,397	\$ -	\$ 281,025	\$ -	\$ 3,912	\$ 7,669		\$ 637,981	
3. Acquire Significant Habitat											
3.1. Critical Land Protection Program fee title & conservation easement acquisition	The Trust for Public Land					\$ 380,000				\$ 380,000	To protect 17 acres of habitat at Lindstrom - Phase I, Savage Fen, or Cedar Creek - Phase II.
3.2. Protecting significant habitat by acquiring conservation easements	Minnesota Land Trust	\$ 88,413	\$ -	\$ -	\$ -	\$ 80,062	\$ 1,525	\$ 80,000		\$ 250,000	Staff: Includes conservation director or land protection staff; staff attorney; and support staff. Acquisition: costs associated with acquiring donated or purchased CE's. Travel: Mileage and related travel expenses. Other: easement stewardship
3.3. Fee acquisition for Mn Valley National Wildlife Refuge	MN Valley NWR Trust, Inc.	\$ -	\$ -	\$ -	\$ -	\$ 225,000	\$ -	\$ -		\$ 225,000	Fee title acquisition of significant habitat in Minnesota River Valley
3.4. Grants & acquisition of fee title & conservation easements	DNR - Metro Greenways	\$ 92,978	\$ -	\$ -	\$ -	\$ 370,000	\$ -	\$ -		\$ 462,978	Grants to LGUs and NGOs for direct acquisition of fee title & conservation easements.
3.5. DNR Fish & Wildlife Acquisition	DNR - Fisheries & Wildlife	\$ -	\$ -	\$ -	\$ -	\$ 292,025	\$ -	\$ -		\$ 292,025	DNR fee acquisition of lands for AMA and/or WMA, including related real estate transaction costs
3.6. Scientific & Natural Area (SNA) Acquisition	DNR - Ecological Services	\$ 7,248	\$ -	\$ -	\$ -	\$ 573,510	\$ 59	\$ -		\$ 580,817	Acquisition: fee title acquisition, including related real estate transaction costs.
SUBTOTAL		\$ 188,639	\$ -	\$ -	\$ -	\$ 1,920,597	\$ 1,584	\$ 80,000		\$ 2,190,820	
4. Community Conservation Assistance											
4.1 Assist local governments to promote the conservation of natural habitats	DNR - Metro Greenways	\$ 46,981	\$ -	\$ -	\$ -	\$ -	\$ -	\$ 223,198		\$ 270,179	Grants to assist local governments with gathering and integrating natural resources information into local development and conservation planning and policy decisions
TOTAL		\$ 628,521	\$ 3,397	\$ -	\$ 281,025	\$ 1,920,597	\$ 5,496	\$ 310,867		\$ 3,149,904	

**METRO CONSERVATION
CORRIDORS PARTNERSHIP**
Phase V (2009)
Completed Projects

-  Metro Conservation Corridors
-  Fee Title Acquisition
-  Conservation Easement
-  Restoration/Enhancement
-  Community Conservation Assistance



Accomplishments during Phase V include:

- 1,225 acres of restored/enhanced habitat
- 1,562 acres of protected land through fee title acquisition and conservation easements.
- Community conservation assistance was provided to eight cities, two counties, and one park district.