

2008 Project Abstract

For the Period Ending June 30, 2010

PROJECT TITLE: Campaign for Conservation

PROJECT MANAGER: Michael Pressman

AFFILIATION: The Nature Conservancy

MAILING ADDRESS: 1101 west River Parkway, Suite 200

CITY/STATE/ZIP: Minneapolis/MN/55415-1291

PHONE: 612-331-0706

FAX: 612-331-0770

E-MAIL: mpressman@tnc.org

WEBSITE: www.nature.org

FUNDING SOURCE: Environment and Natural Resources Trust Fund

LEGAL CITATION: ML 2008 First Special Section, Ch. 367, Sec. 2, Subd. 3(c)

APPROPRIATION AMOUNT: \$317,000

Overall Project Outcome and Results:

This project focused on 5 habitat restoration projects. Additional details, beyond the short summaries below, are located within the Final Report's more detailed reporting.

NE MN Forest Restoration – 162 acres of State and County land were planted with long lived conifers and/or fenced to protect them from deer browse.

Chippewa Prairie – Fencing of 1,318 acres (5.5 miles of fence), as part of a comprehensive effort to implement a rotational grazing system on 2,866 acres of TNC and MN DNR land along the Minnesota River in Chippewa and Swift Counties. This helps to maintain and enhance the quality of the native prairie found at this location by mimicking the historic disturbance pattern resulting from bison grazing.

Prairie Forest Border – TNC accelerated management activities on TNC and public lands to help return lands to highly diverse ecosystems and fight the invasion of non-native plants and brush. Work included 2,359 acres of prescribed fire, 265 acres mechanically or chemically treated for invasive species, and 75 acres of brush removed. In addition, 1,760 additional acres were prepared for future prescribed fire, brush control, and invasive species control efforts.

Ordway Glacial Lakes (OGL) – Under this appropriation, 140 acres of native prairie were enhanced through removal of woody vegetation by prescribed fire and mechanical means. In addition to other places, this work showed the dramatic increase in acres that could be treated using the new skid steer loader and brush cutting attachments.

Agassiz Beach Ridges – Prairie was restored on 160 acres of the Bluestem Prairie -Williams Tract as part of a larger effort with multiple funding sources that to date includes 837 acres of wetland and prairie restoration with an additional 438 acres planned. The overriding project goal is to restore prairie communities for wildlife habitat, improvement of landscape hydrology, and to build connectivity between the Bluestem Prairie complex and the Margherita/Audubon Prairie preserve.

Project Results Use and Dissemination:

All restored lands are open to the public. TNC continues to coordinate with public and private partners to apply lessons learned from this project to other efforts. Investments in skid steer loader, brush cutting attachments, and pumper units will continue to have an impact beyond this project time period through continued use to restore additional land beyond this grant period.

LCCMR Work Program Final Report
Restoring Minnesota's Fish and Wildlife Habitat Corridors Phase 5
Habitat Conservation Partnership

2N: Campaign for Conservation - The Nature Conservancy

Project Manager:	Michael Pressman	Fund: Environment and Natural Resources Trust Fund
Affiliation:	The Nature Conservancy	
Address:	1101 West River Parkway Minneapolis, MN 55415	
Phone:	612-331-0706	Legal Citation: ML 2008 First Special Section, Ch. 367, Sec. 2 Subd. 3(c).
Fax:	612-331-0770	
E-mail:	mpressman@tnc.org	

Total Biennial Project Budget

Result	ENTF Allocation	ENTF Funds Spent	ENTF Balance	Other Funds Proposed	Other Funds Spent
Restoration	\$317,000	\$317,000	\$0	\$317,000	\$340,062
Total	\$317,000	\$317,000	\$0	\$317,000	\$340,062

Work Program Summary

Overall Project Outcome and Results

The Nature Conservancy's (TNC) 2007 work program focused on 5 habitat restoration projects. Additional details, beyond the short summary below, are located within each project's more detailed reporting.

NE MN Forest Restoration – 162 acres of State and County land were planted with long lived conifers and/or fenced to protect them from deer browse.

Chippewa Prairie – Fencing of 1,318 acres (5.5 miles of fence), as part of a comprehensive effort to implement a rotational grazing system on 2,866 acres of TNC and MN DNR land along the Minnesota River in Chippewa and Swift Counties. This helps to maintain and enhance the quality of the native prairie found at this location by mimicking the historic disturbance pattern resulting from bison grazing.

Prairie Forest Border – TNC accelerated management activities on TNC and public lands to help return lands to highly diverse ecosystems and fight the invasion of non-native plants and brush. Work included 2,359 acres of prescribed fire, 265 acres mechanically or chemically treated for invasive species, and 75 acres of brush removed. In addition, 1,760 additional acres were prepared for future prescribed fire, brush control, and invasive species control efforts.

Ordway Glacial Lakes (OGL) – Under this appropriation, 140 acres of native prairie were enhanced through removal of woody vegetation by prescribed fire and mechanical means. In addition to other places, this work showed the dramatic increase in acres that could be treated using the new skid steer loader and brush cutting attachments.

Agassiz Beach Ridges – Prairie was restored on 160 acres of the Bluestem Prairie -Williams Tract as part of a larger effort with multiple funding sources that to date includes 837 acres of wetland and prairie restoration with an additional 438 acres planned. The overriding project goal is to restore prairie communities for wildlife habitat, improvement of landscape hydrology, and to build connectivity between the Bluestem Prairie complex and the Margherita/Audubon Prairie preserve.

Project Results Use and Dissemination

All restored lands are open to the public. TNC continues to coordinate with public and private partners to apply lessons learned from this project to other efforts. Investments in skid steer loader, brush cutting attachments, and pumper units will continue to have an impact beyond this project time period through continued use to restore additional land beyond this grant period.

LCCMR Work Program Final Report
Restoring Minnesota's Fish and Wildlife Habitat Corridors Phase 5
Habitat Conservation Partnership

2N: Campaign for Conservation - The Nature Conservancy

Restoration Activities

Project Area - 3 - Border Prairie

Project Name: Agassiz Beach Ridges
Tract: multiple
 Township: 139, Range: 46, Section: 22

Activity: Grassland Restoration
Landtype: Private - Land
Description: Prairie was reconstructed/restored on 160 acres of the Williams Tract near the Bluestem Prairie complex in Clay County, Minnesota. Prior to reconstruction the area was a degraded field composed of non-native plant species. TNC contracted Prairie Restorations, INC. for site preparation and seeding. The restoration area was sprayed with glyphosate three times by aerial application in 2008 and 2009 to prepare the site. Seed was harvested by combine from 72 acres of nearby native prairie areas in September and October, 2008. Seeding with native harvest was completed August 12, 2009.

The restoration funded through this appropriation was part of a larger restoration effort funded through multiple sources. The overall effort includes wetland and prairie reconstruction/restoration on 837 acres so far with an additional 438 acres planned.

The overriding goal of the project is to restore prairie communities for wildlife habitat, for improvement of the landscape hydrology, and to build connectivity between the Bluestem Prairie complex and the Margherita/Audubon Prairie preserve.

<i>Funding Type</i>	<i>Funds Use</i>	<i>Funding Amount</i>	<i>Prorated Acres</i>	<i>Prorated Shoreline</i>
ENTF	Restoration	\$80,149.03	47.93	0.00
Other Funds	Restoration	\$187,407.80	112.07	0.00
Agassiz Beach Ridges multiple Total		\$267,556.83	160.00	0.00

Project Area - 5 - Lower St. Louis River

Project Name: Northeast Minnesota Forest Restoration
Tract: Multiple
 Township: 55, Range: 8, Section: 30

Activity: Woodland Restoration
Landtype: Public - State Forest
Description: The Nature Conservancy is working collaboratively with the MNDNR, Lake and St. Louis Counties and the US Forest Service on forest planning, timber management, and biodiversity conservation in large landscape sized areas in Northeast Minnesota including the St. Louis River Habitat Conservation Partnership project area that encompasses Lake Superior's North shore. Conifer restoration has been identified by all partners as a key management and conservation strategy on the North Shore. The goal for the LCCMR funded portion of this project was to plant long lived conifers and fence a portion of those plantings to protect them from deer browse. During the 2009 field season, 162 acres were planted and/or fenced on State and County land within the "North Shore" Corridor.

Restoration is being done on lands managed as State Parks, Wildlife Management Areas, State Forest, and Lake County lands.

<i>Funding Type</i>	<i>Funds Use</i>	<i>Funding Amount</i>	<i>Prorated Acres</i>	<i>Prorated Shoreline</i>
ENTF	Restoration	\$22,598.36	162.00	0.00

LCCMR Work Program Final Report
Restoring Minnesota's Fish and Wildlife Habitat Corridors Phase 5
Habitat Conservation Partnership

2N: Campaign for Conservation - The Nature Conservancy

Project Area - 6 - Upper Minnesota River

Project Name: Chippewa Prairie
Tract: multiple
 Township: 119, Range: 43, Section: 12

Activity: Grassland Restoration
Landtype: Private - Land
Description: The Nature Conservancy and the Minnesota Department of Natural Resources (DNR) are cooperating on a Prairie Coteau Restoration Project affecting 2,866 acres along the Minnesota River in Chippewa and Swift Counties. TNC owns and manages 1,142 of this as the Chippewa Prairie Preserve. DNR owns and manages 1,724 acres as part of the Lac qui Parle Wildlife Management Area. The project's goal is to implement a rotational grazing system. This involves intensive grazing on limited portions of the project area for short periods. These areas are then rested for a longer period. This helps to maintain and enhance the quality of the native prairie found at this location by mimicking the historic disturbance pattern resulting from bison grazing.

As part of this appropriation, TNC completed fencing of 1,318 acres (5.5 miles of fence). Additional work is planned under the 2009 appropriation and is pending a 2010 LCCMR recommendation.

\$13,625.79 of Other Funds in the 11/09 report are salary expenses. They have been coded as restoration expenses to facilitate proper acre proration in the online reporting system.

\$14,693.42 of Other Funds in the 2/10 report are salary expenses. They have been coded as restoration expenses to facilitate proper acre proration in the online reporting system.

<i>Funding Type</i>	<i>Funds Use</i>	<i>Funding Amount</i>	<i>Prorated Acres</i>	<i>Prorated Shoreline</i>
ENTF	Restoration	\$20,000.00	523.02	0.00
Other Funds	Restoration	\$30,399.18	794.98	0.00
Chippewa Prairie multiple Total		\$50,399.18	1,318.00	0.00

LCCMR Work Program Final Report
Restoring Minnesota's Fish and Wildlife Habitat Corridors Phase 5
Habitat Conservation Partnership

2N: Campaign for Conservation - The Nature Conservancy

Project Area - 7 - Alexandria Moraine

Project Name: Ordway Glacial Lakes
Tract: Multiple
 Township: 122, Range: 36, Section: 2

Activity: Grassland Restoration
Landtype: Private - Land
Description: In the Ordway Glacial Lakes (OGL) landscape woody vegetation encroachment into the native prairies has become our number one threat. TNC, DNR and USFWS have all identified this threat and begun working diligently on this issue. The Nature Conservancy owns and manages 3 preserves totaling 2,486 acres on which woody vegetation removal is actively being pursued. As part of this appropriation, 140 acres of native prairie has been enhanced by the removal of woody vegetation by mechanical removal. This was done at three TNC preserves - Leif Mountain, Ordway Prairie and Sheepberry Fen (the latter was an acquisition partially funded with prior ENTFF appropriation). Additional acres were treated by prescribed fire and are accounted for under the Prairie Forest Border project. The use of private contractors often makes up much of the work load, however with purchase of the skid loader more work is accomplished by TNC staff. In addition to other places, this work showed the dramatic increase in acres that could be treated using the new skid steer loader and brush cutting attachments.

The wood that was removed has been separated into two piles: one is a brush pile that consists of all woody material too small to be counted as fire wood, two, is the wood large enough to be used as fire wood. The brush piles will be burned in the next Rx fire planned for the unit and the other wood will be hauled to the side of the road to let whomever come and cut it up and haul away. The stumps remain and have been chemically treated to prevent resprout.

\$9,900 in Other Funds in 11/09 report are salary expenses. They have been listed as restoration expenses to facilitate proper proration of acres in the online reporting system.

2/10 prior sentence was incorrect in last report. The \$9,900 was a contract expense and are correctly coded as a restoration expense.

<i>Funding Type</i>	<i>Funds Use</i>	<i>Funding Amount</i>	<i>Prorated Acres</i>	<i>Prorated Shoreline</i>
ENTF	Restoration	\$30,000.00	105.26	0.00
Other Funds	Restoration	\$9,900.00	34.74	0.00
Ordway Glacial Lakes Multiple Total		\$39,900.00	140.00	0.00

LCCMR Work Program Final Report
Restoring Minnesota's Fish and Wildlife Habitat Corridors Phase 5
Habitat Conservation Partnership

2N: Campaign for Conservation - The Nature Conservancy

Project Area - 3-7-8 - Border Prairie Transition Zone

Project Name: Prairie Forest Border - Multiple Sites
Tract: Multiple
Township: 122, Range: 36, Section: 2

Activity: Grassland Restoration
Landtype: Private - Land
Description: Within the Prairie Forest Border Ecoregion, TNC owns and manages 23 preserves, and collaborates with other conservation partners to maintain and restore these preserves as well as public and private lands in the landscapes surrounding preserves. Most of these lands are fire-dependent ecosystems. In the absence of fire, many of these preserves have been invaded by fire-intolerant invasive species and/or brush over time. The goal of this project was to accelerate the management activities on these TNC and public lands to help return these lands to highly diverse ecosystems and fight the invasion of non-native plants and brush.

TNC hired seasonal employees to conduct restoration work on eight of these nature preserves and surrounding public lands. This restoration work included 2,359 acres burned, 265 acres mechanically or chemically treated for invasive species, and 75 acres of brush removed. In addition, 1,760 additional acres were prepared for future prescribed fire, brush control, and invasive species control efforts. These additional acres will be completed with funds outside this appropriation, including TNC's 2009 Trust Fund appropriation.

Work was completed at the following preserves: Lake Alexander, Paul Bunyan Savanna, Ottawa Bluffs, Weaver Dunes, Leif Mountains, Ordway Prairie, Regal Meadow, and Sheepberry Fen.

\$1,527.68 in 12/08 report are for personnel expenditures. They were listed as restoration to facilitate proper acres proration in the online reporting system.

The wood that was removed has been separated into two piles: one is a brush pile that consists of all woody material too small to be counted as fire wood, two, is the wood large enough to be used as fire wood. The brush piles will be burned in the next Rx fire planned for the unit and the other wood will be hauled to the side of the road to let whomever come and cut it up and haul away. The stumps remain and have been chemically treated to prevent resprout.

\$7,934.42 in 5/09 report are personnel expenses. They were listed as restoration to facilitate proper acres proration in the online reporting system.

\$9,465.84 in 11/09 report are personnel expenses. They were listed as restoration to facilitate proper acres proration in the online reporting system.

2/10 - the November 2009 workprogram update included an error in the Other Funds reported for this project. This error is corrected in this final report.

\$27,852.11 of ENTF funds and \$4,300.44 of Other Funds in 2/10 report are personnel expenses. They were listed as restoration to facilitate proper acres proration in the online reporting system.

<i>Funding Type</i>	<i>Funds Use</i>	<i>Funding Amount</i>	<i>Prorated Acres</i>	<i>Prorated Shoreline</i>
ENTF	Restoration	\$36,858.71	2,417.00	0.00
Other Funds	Restoration	\$4,300.44	282.00	0.00
Prairie Forest Border - Multiple Sites Multiple Total		\$41,159.15	2,699.00	0.00

Restoration Project Totals (By Funding Type)

Funding Type	Funding Amount	Acres	Shoreline Feet
ENTF:	\$189,606.10	3,255.22	0.00

LCCMR Work Program Final Report
Restoring Minnesota's Fish and Wildlife Habitat Corridors Phase 5
Habitat Conservation Partnership

2N: Campaign for Conservation - The Nature Conservancy

Other Funds:	\$232,007.42	1,223.78	0.00
Total:	\$421,613.52	4,479.00	0.00

LCCMR Work Program Final Report
Restoring Minnesota's Fish and Wildlife Habitat Corridors Phase 5
Habitat Conservation Partnership

2N: Campaign for Conservation - The Nature Conservancy

Work Program Expenditures - Not Attributable to Specific Projects

<i>FundingType</i>	<i>Category</i>	<i>Amount</i>	<i>Description</i>
ENTF	Equipment Costs	\$97,590.28	New Holland C190 tracked skid loader with the following attachments: Carbide Cutter, tree sheer, grapple, sweeper, and a bucket. Also included is \$544 in license fees for the skid steer loader (and postage on pumper unit supplies) and \$1,125.93 in supplies necessary for regular upkeep of the skid steer loader. All will be used to manage woody vegetation on native prairie sites.
ENTF	Equipment Costs	\$29,803.42	Pumper Units for prescribed fire and associated attachments and supplies (equipment - \$21,271.60; supplies - \$8,531.82).
Other Funds	Admin	\$108,054.35	The Conservancy's federally approved indirect cost recovery rate (23.28% through 6/30/09, 23.05% effective 7/1/09) has been applied to the \$228,125.97 of reimbursable expenses and \$237,172.82 of other funds (but not including the skid steer loader and attachments) incurred through the restoration portion of the grant. This rate is approved by the Conservancy's federal cognizant agency, the US Department of the Interior. A copy of the official negotiated indirect rate agreement can be provided upon request.
Total:		\$235,448.05	

Work Program Expenditures (Not Attributable to Specific Projects) By Funding Type

Funding Type	Amount
ENTF	\$127,393.70
Other Funds	\$108,054.35
Total	\$235,448.05

Work Program Expenditures Breakdown

Funding Type:	Restoration Projects	Not Attributable to Specific Projects	Total
ENTF	\$189,606.10	\$127,393.70	\$316,999.80
Other Funds	\$232,007.42	\$108,054.35	\$340,061.77
State Funds	\$0.00	\$0.00	\$0.00
Total	\$421,613.52	\$235,448.05	\$657,061.57

LCCMR Work Program Final Report
Restoring Minnesota's Fish and Wildlife Habitat Corridors Phase 5
Habitat Conservation Partnership

2N: Campaign for Conservation - The Nature Conservancy

Funding Type Definitions

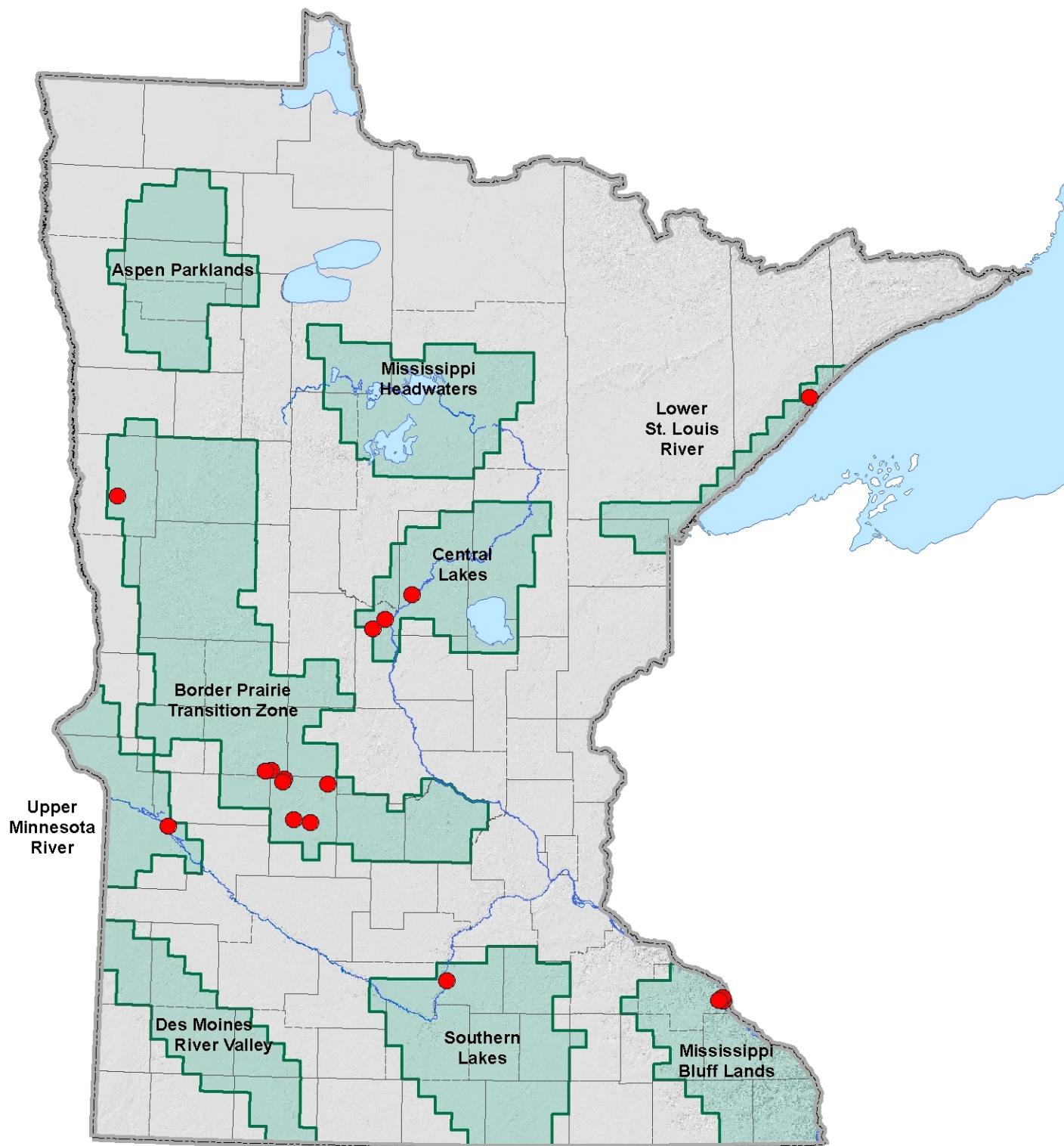
ENTF:	Grant dollars provided through the Minnesota Environment and Natural Resources Trust Fund
Other Funds:	Non-state, non-state leveraged dollars (if partner funds are leveraging State Funds (e.g. RIM) they are not eligible to be considered Other Funds)
State Funds:	State Funds expended on HCP projects (not eligible for use as Other Funds commitment)
Partner's State Leveraged Funds:	Non State Funds that have leveraged State Funds as part of an HCP project (not eligible for use as Other Funds commitment)
Other:	Any other expenditures (e.g. grant income funds)

Attachment A: Budget Detail for 2008 Projects - Summary and a Budget page for each partner						
Project Title: Campaign for Conservation						
			Minnesota's Habitat Conservation Partnership (V)			
Project Manager Name: Michael Pressman						
Trust Fund Appropriation: \$ 317,000						
2008 Trust Fund Budget	Result 1 Budget: 1st Revised Budget 5/15/09	Result 1 Budget: 2nd Revised Budget 11/3/09	Amount Spent (12/31/09)	Balance (12/31/09)	TOTAL BUDGET	TOTAL BALANCE
	Restoration	Restoration				
BUDGET ITEM					0	0
PERSONNEL: wages and benefits	48,000	27,852	27,852	0	27,852	0
Contracts					0	0
Professional/technical (seeding, tree removal, fencing, reforestation, weed control, etc.)	157,535	142,860	142,868	-8	142,860	-8
Equipment / Tools (Skid steer loader w/ brush cutting & firebreak attachments and trailer. Not included in this figure is \$1,125.93 in supplies related to the skid steer loader. TNC's accounting systems tracks supplies and those expenses are included in the Other Supplies category. \$530.43 in license fees related to the skid steer loader trailer have been moved to the Other category.)	100,000	95,920	95,920	0	95,920	0
Equipment / Tools (Pumper units for prescribed fire. There are an additional \$8,614 in expenses related to the pumper units that TNC's accounting system categorizes as supplies and those expenses are reflected in the Other Supplies category. \$13.93 for shipping expenses for pumper unit supplies has been moved to the Other category.)	30,000	21,272	21,272	0	21,272	0
Other Supplies (herbicide & sprayers, fuel for chainsaws, etc. This figure also includes \$1,125.93 in supplies related to the skid steer loader and \$8,614 in supplies related to the pumper units. \$2,500 for deer fencing materials for NE MN forest restoration.)	11,465	28,552	28,544	8	28,552	8
Other (License fees for trailer to haul skid steer loader, postage for pumper unit supplies.)	0	544	544	0	544	0
COLUMN TOTAL	\$317,000	\$317,000	\$317,000	\$0	\$317,000	\$0
Update as of 5/15/09: Revised budget figures reflect the shifting of \$10,465 from the NE MN Contracts budget to supplies per 4/21/09 email request. Also included is a change in the Chippewa Prairie budget that shifts \$7,500 from supplies to contracts.						
Update as of 11/3/09: Revised budget figures reflect the Conservancy's request to shift \$9,852 from the Contracts budget to Personnel, a request to shift \$4,823 from the Contracts budget to Supplies, and a request to shift \$2,500 (\$2,400 from the skid steer loader and \$100 from the pumper units) to supplies. Request approved 11/3/09.						

Campaign for Conservation

Habitat Conservation Partnership

Phase 5 Accomplishments

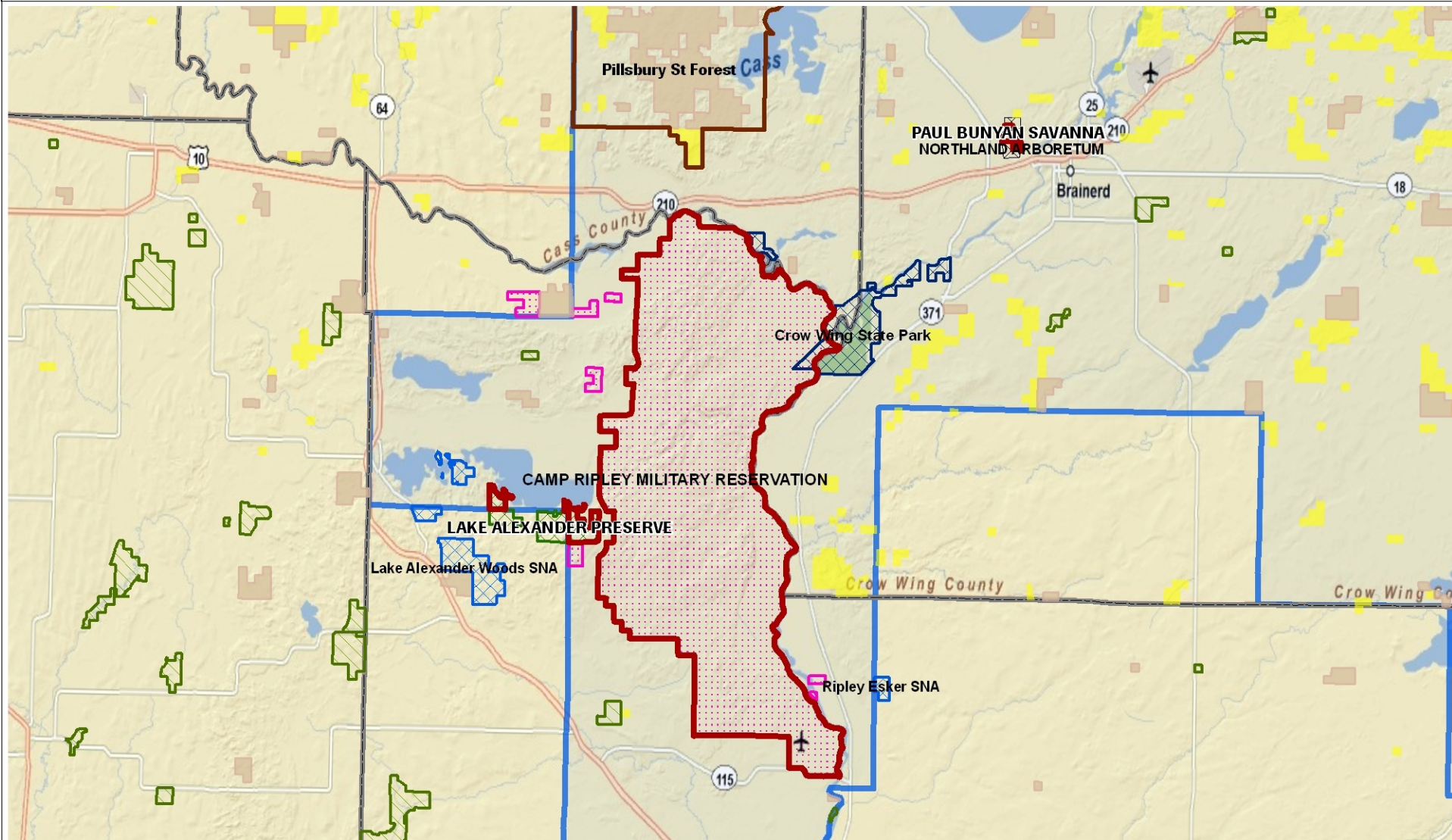


Legend

- Restoration Project Locations
- ▲ Acquisition Project Locations
- Habitat Conservation Partnership Project Areas

Prairie Forest Border Restoration - 1 of 4

Crow Wing & Morrison Counties, MN



- | | | |
|--------------------------|---------------------------------------|----------------------------------|
| HCP Action Areas | Scientific & Natural Area - DNR, 2009 | Camp Ripley Military Reservation |
| Restoration Project | Wildlife Management Area - DNR, 2009 | Other Conservation Ownership |
| TNC Preserve - TNC, 2010 | State Forest (Authorized) - DNR | County Ownership - DNR |
| State Park - DNR, 2009 | State Forest (Ownership) - DNR | |

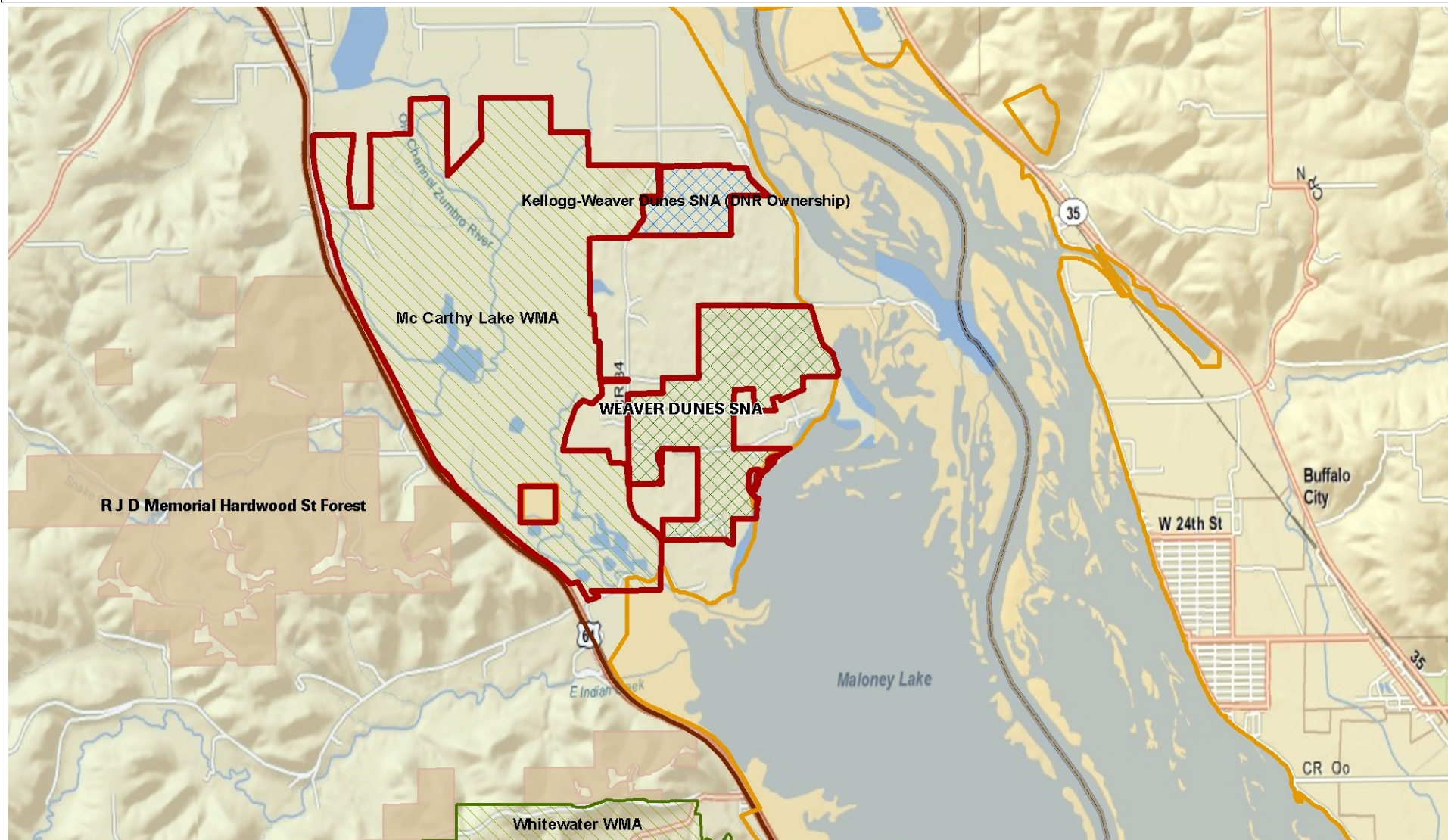
4 2 0 4 Miles



M:\mnd\Prairie Forest Border\Grant\LCDMR
Prairie Forest Border Restoration - 1 of 4 - 2009.mxd
Map created by: RGL, TNC in MN\ND\SD, 2010/02/22

Prairie Forest Border Restoration - 2 of 4

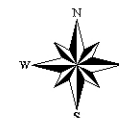
Wabasha County, MN



- | | |
|---------------------------------------|--------------------------------------|
| HCP Action Areas | State Forest (Authorized) - DNR |
| Restoration Project | State Forest (Ownership) - DNR |
| TNC Preserve - TNC, 2010 | National Wildlife Refuge - FWS, 2008 |
| Scientific & Natural Area - DNR, 2009 | USFWS Ownership - FWS, 2008 |
| Wildlife Management Area - DNR, 2009 | |

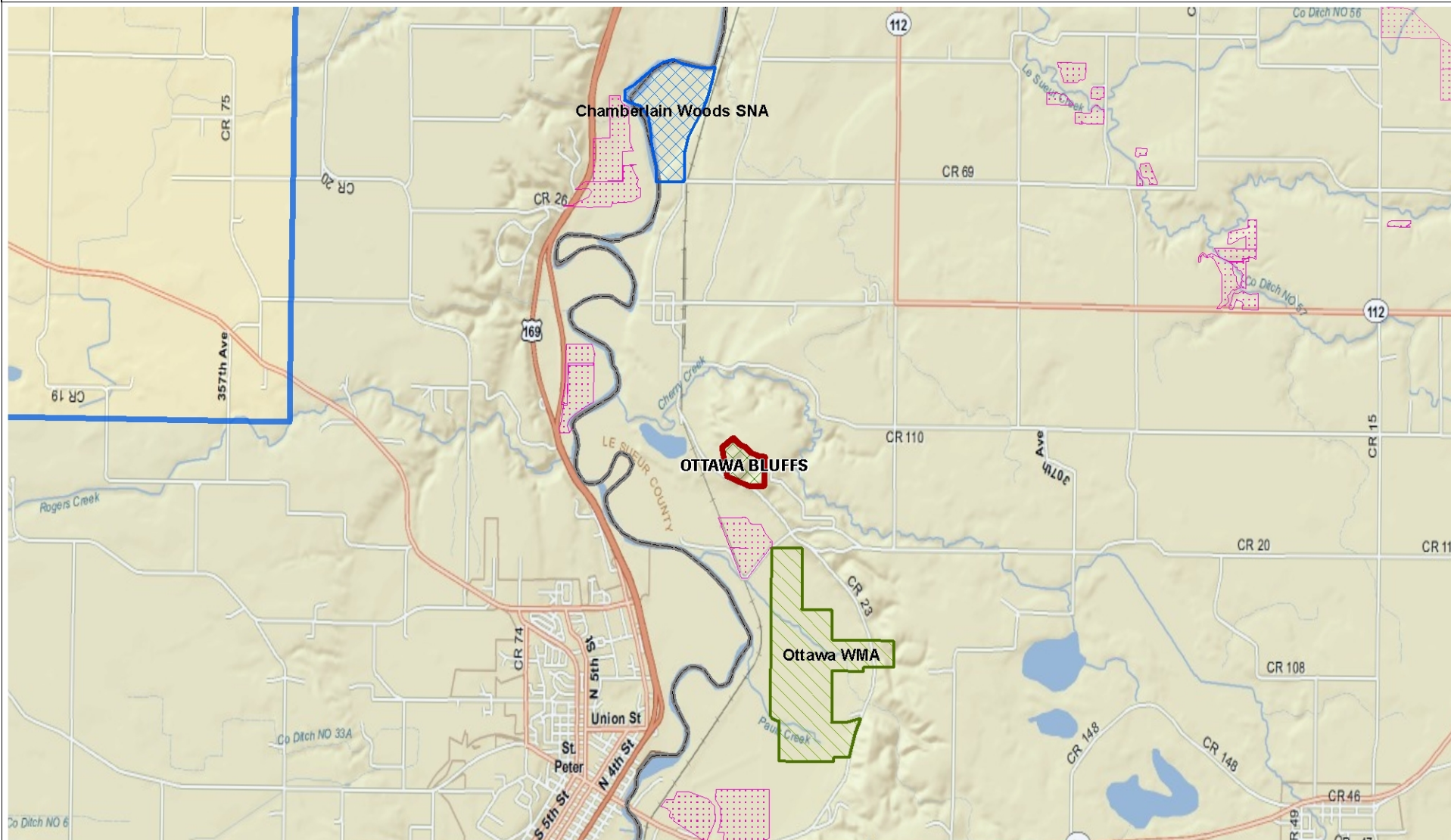
1 0.5 0 1 Miles

M:\mnd\Prairie Forest Border\Grant\LCOMR
Prairie Forest Border Restoration - 2 of 4 - 2009.mxd
Map created by: RCL, TNC in MN\ND\SD, 2010/02/22




Prairie Forest Border Restoration - 3 of 4

Le Sueur County, MN

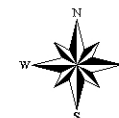


Legend

- | | |
|--|---|
|  HCP Action Areas |  Scientific & Natural Area - DNR, 2009 |
|  Restoration Project |  Wildlife Management Area - DNR, 2009 |
|  TNC Preserve - TNC, 2010 |  Permanent Conservation Easement |

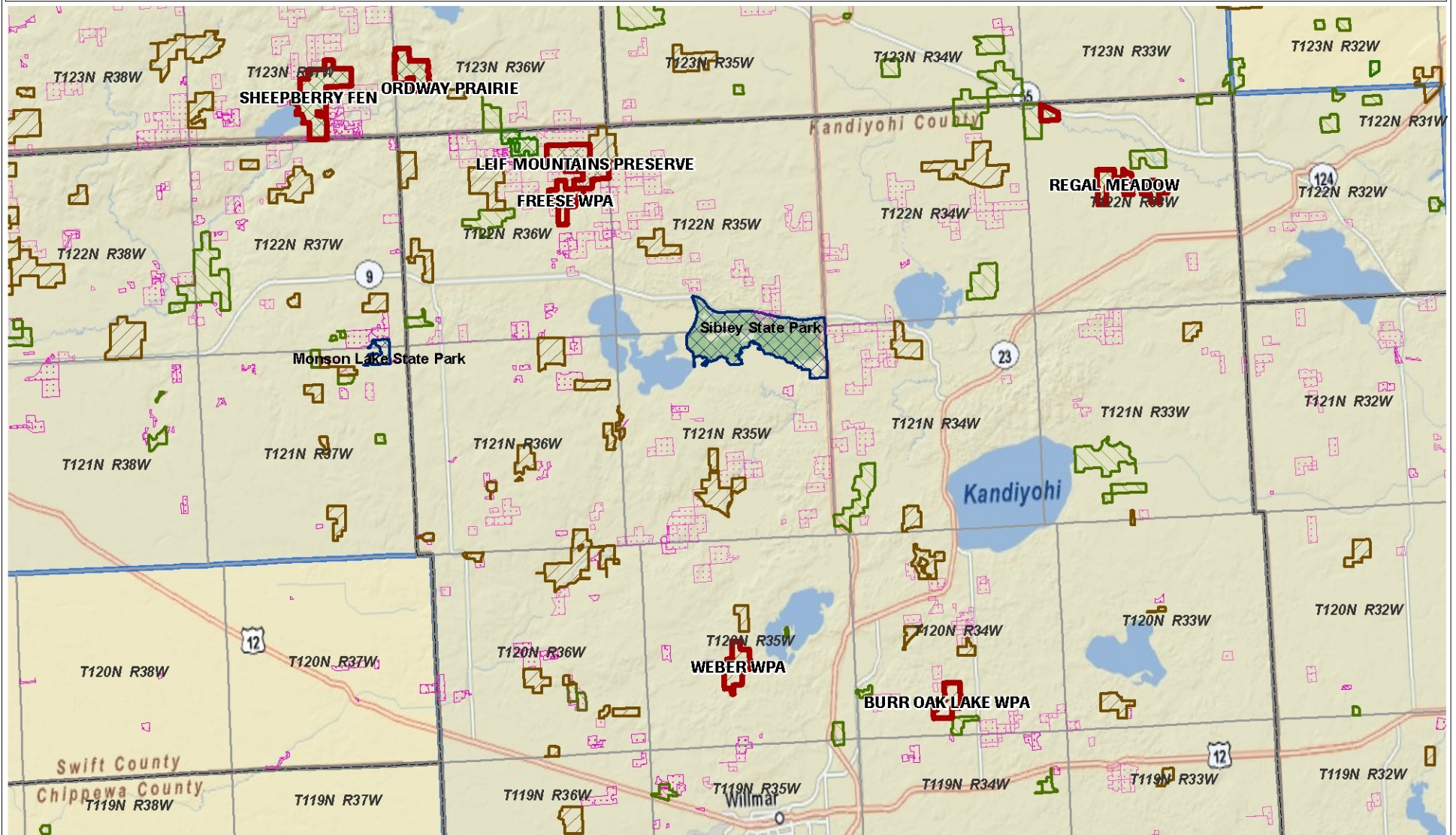
1 0.5 0 1 Miles

M:\mnd\Prairie Forest Border\Grant\LCOMR
Prairie Forest Border Restoration - 3 of 4 - 2010.mxd
Map created by: RCL, TNC in MN\ND\SD, 2010/02/22



Prairie Forest Border Restoration - 4 of 4

Kandiyohi & Pope Counties, MN



- | | |
|--------------------------|---|
| HCP Action Areas | State Park - DNR, 2009 |
| Restoration Project | Wildlife Management Area - DNR, 2009 |
| TNC Preserve - TNC, 2010 | USFWS Ownership - FWS, 2008 |
| | Permanent Conservation Easement - Various |

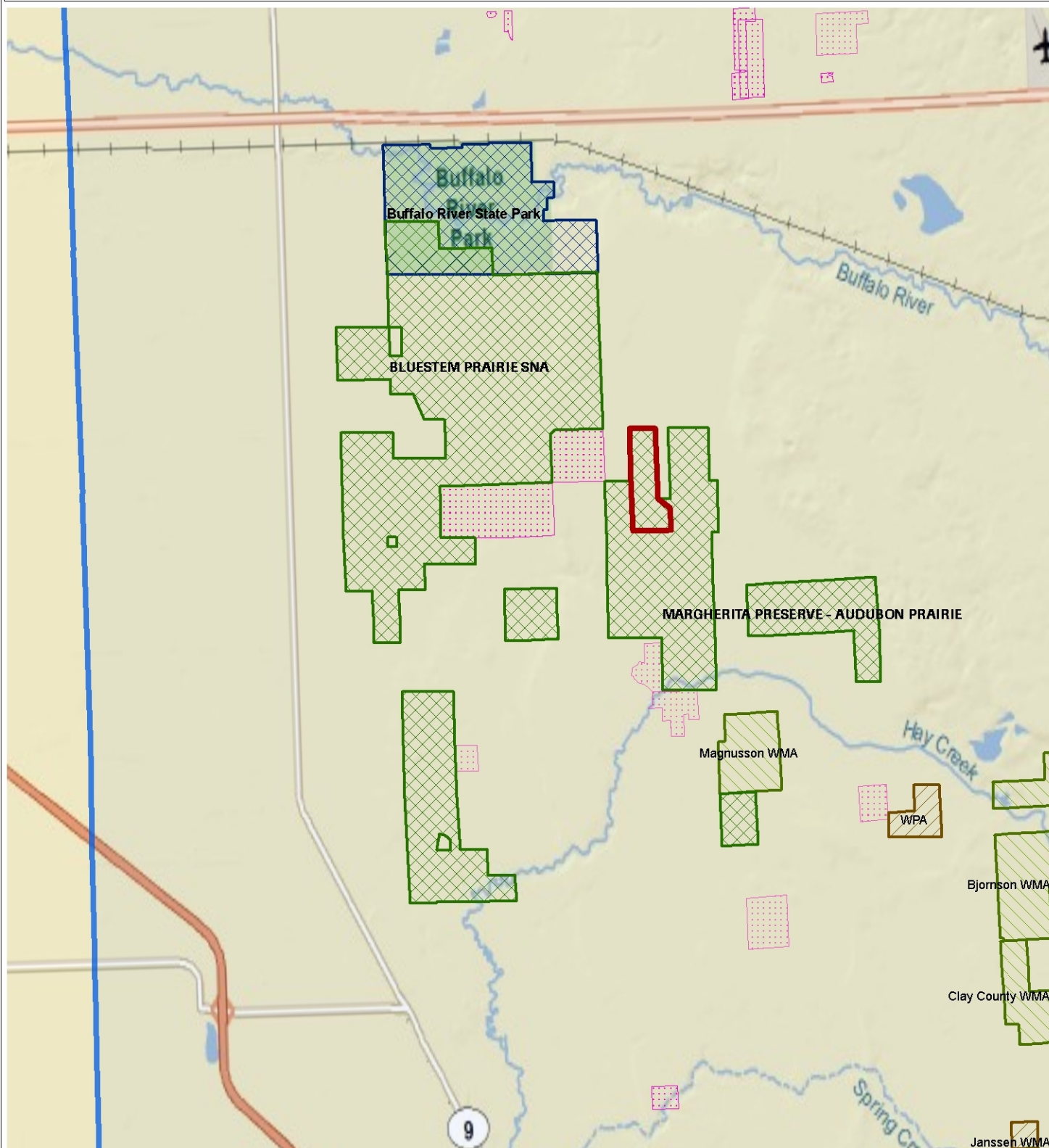
3 1.5 0 3 Miles



M:\Midwest\Prairie Forest Border\Grant\LCOMRA
Prairie Forest Border Restoration - 4 of 4 - 2009.mxd
Map created by: RCL, TNC in MN\ND\G.D. 2010/01/02

Agassiz Beach Ridges Restoration

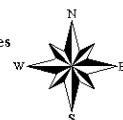
Clay County, MN - T139N R46W Sec 25



- | | |
|--------------------------|---|
| HCP Action Areas | State Park - DNR, 2009 |
| Restoration Project | Wildlife Management Area - DNR, 2009 |
| TNC Preserve - TNC, 2010 | USFWS Ownership - FWS, 2008 |
| | Permanent Conservation Easement - Various |

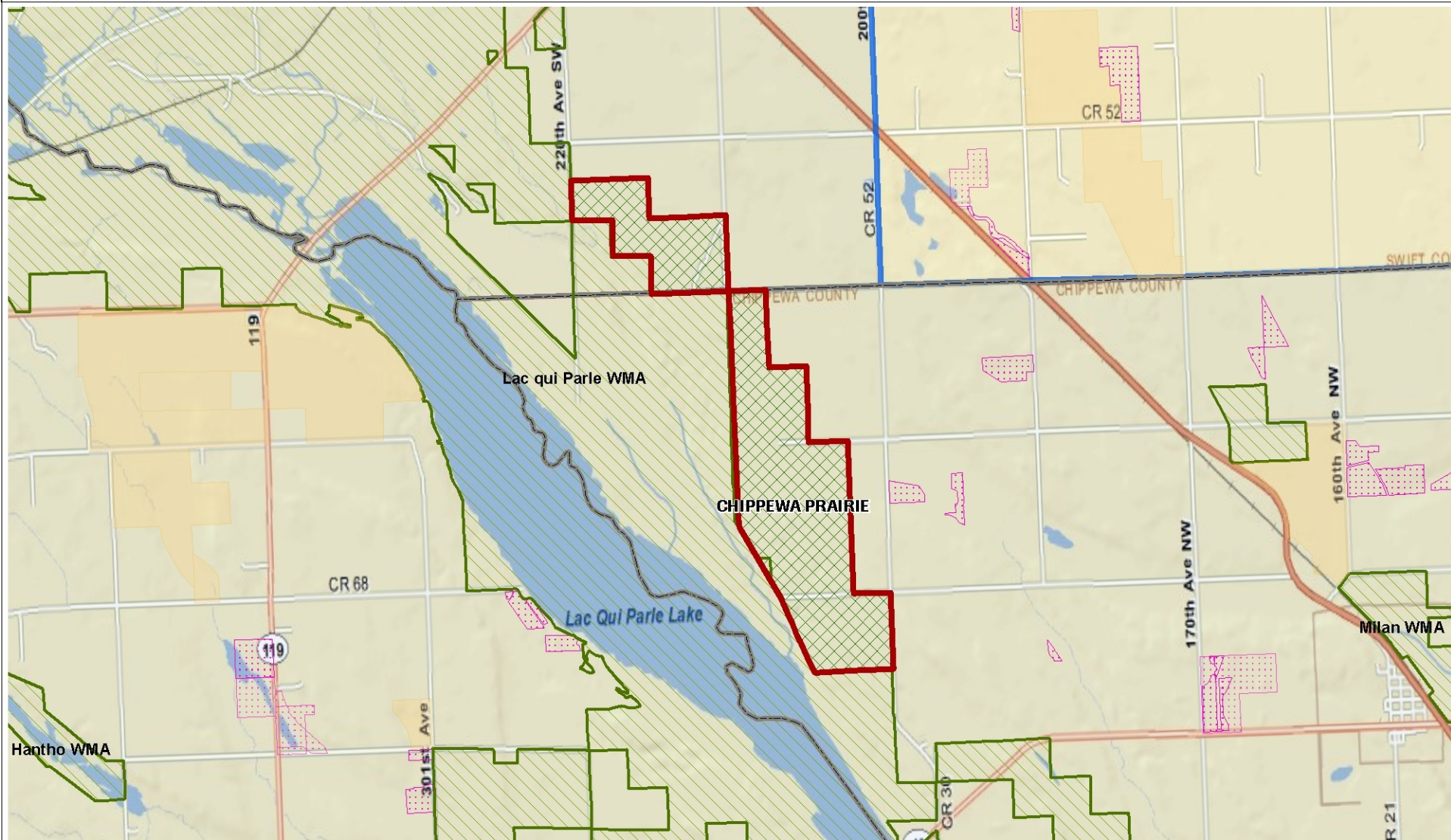
1 0.5 0 1 Miles

M:\mnd\Northern Tallgrass Prairie\Bluestem Prairie\Grant\LCMRA
Bluestem Prairie (Williams) Restoration - 2009.mxd
Map created by: R.C.J. TNC in MN\ND\SD, 2010/2/22



Chippewa Prairie Restoration

Chippewa & Swift Counties, MN

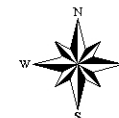


Legend

- | | |
|--|--|
|  HCP Action Areas |  Wildlife Management Area - DNR, 2009 |
|  Restoration Project |  USFWS Ownership - FWS, 2008 |
|  TNC Preserve - TNC, 2010 |  Permanent Conservation Easement |

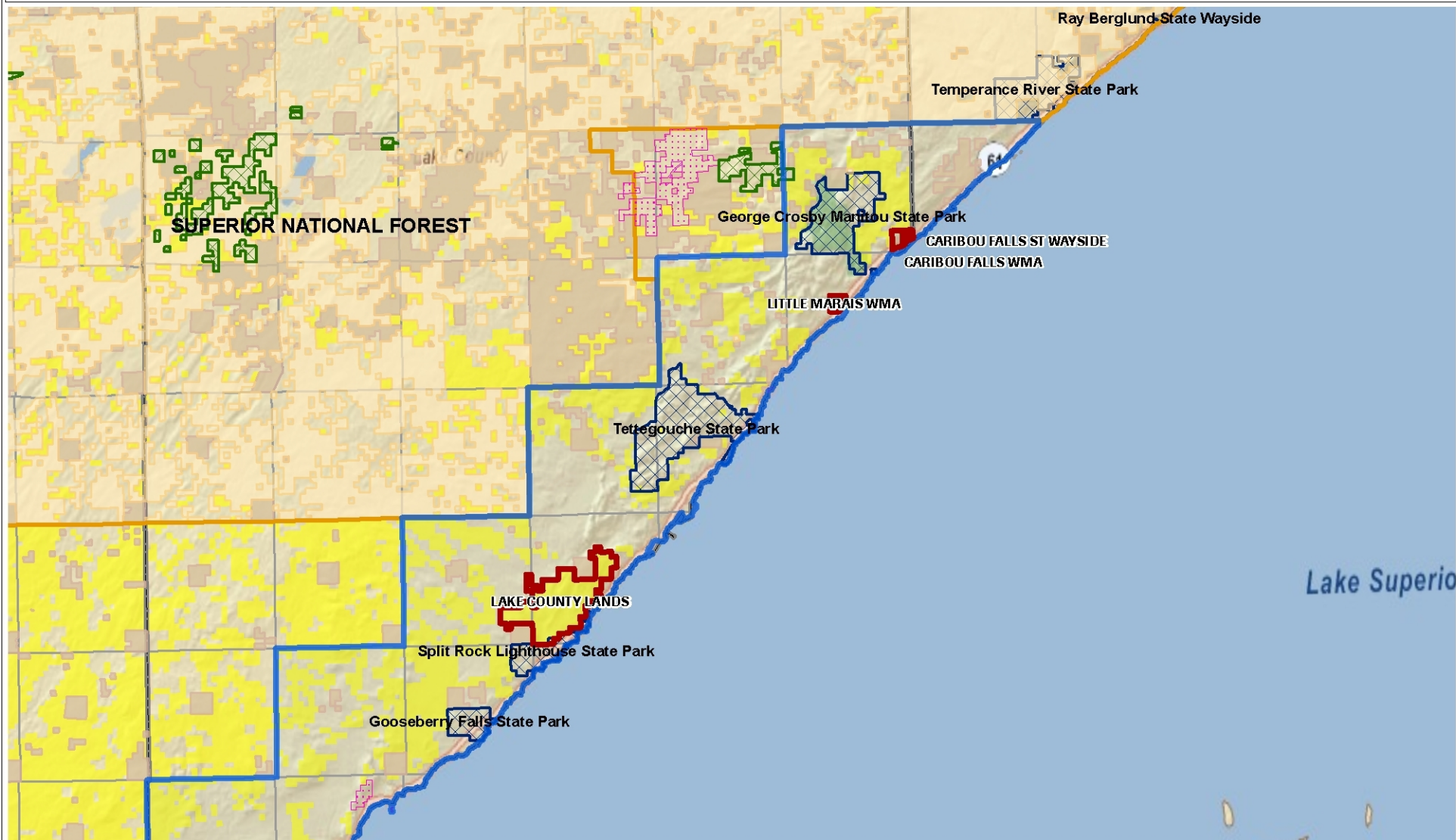
1 0.5 0 1 Miles











M:\mwd\Prairie Forest Border\Grant\LCOMR
Chippewa Prairie Restoration - 2009.mxd
Map created by: RCL, TNC to MN/DNR, 2010/02/22



NE Minnesota Forest Restoration

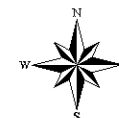
Lake County, MN



- | | | |
|--|--|--|
|  HCP Action Areas |  National Forest (Authorized) - USFS |  State Forest (Ownership) - DNR |
|  Restoration Project |  US Forest Service (Ownership) - DNR |  County Ownership - DNR |
|  TNC Preserve - TNC, 2010 |  State Park - DNR, 2009 |  Permanent Conservation Easement - Various |
| |  Wildlife Management Area - DNR, 2009 | |

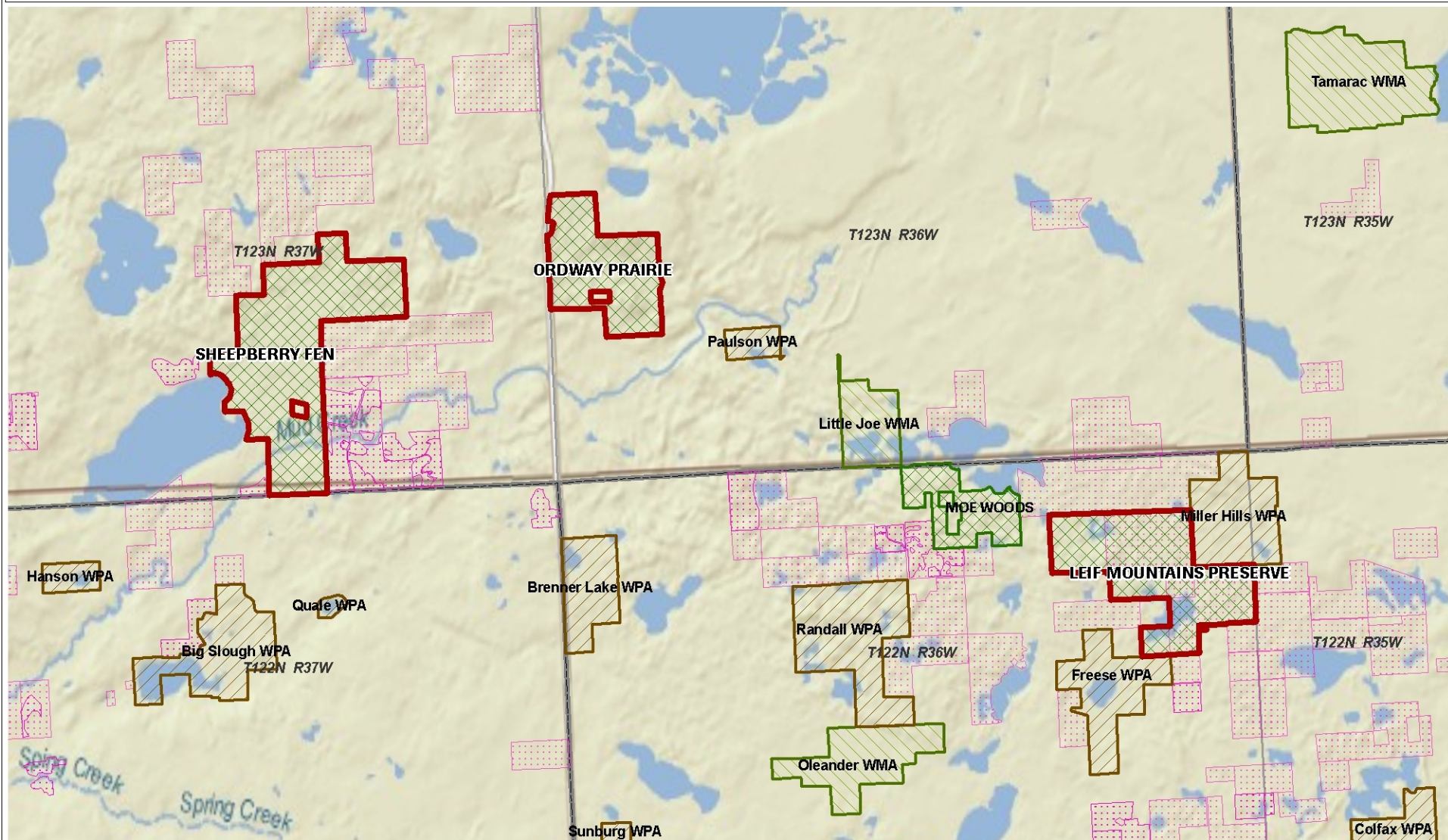
5 2.5 0 5 Miles

M:\mwd\Superior Mixed Forest - Great Lakes\Grants\LCOMR\NE Minnesota Forest Restoration - 2009.mxd
Map created by: RCI, TNC in MN\ND\SD, 2010/04



Ordway - Glacial Lakes Restoration

Kandiyohi & Pope Counties, MN



- | | |
|--|---|
|  HCP Action Areas |  Wildlife Management Area - DNR, 2009 |
|  Restoration Project |  USFWS Ownership - FWS, 2008 |
|  TNC Preserve - TNC, 2010 |  Permanent Conservation Easement - Various |

1 0.5 0 1 Miles

M:\mnd\Prarie Forest Border\Ordway - Glacial Lakes\Grant\UCOMR
Ordway - Glacial Lakes Restoration - 2008.mxd
Map created by: RCL, TNC in MN\ND\SD, 2010/02/22

