

2008 Project Abstract

For the Period Ending June 30, 2010

TITLE: Metro Conservation Corridors Phase IV (3.3) – Fee Acquisition for Minnesota Valley National Wildlife Refuge

PROJECT MANAGER: Deborah Loon

ORGANIZATION: Minnesota Valley National Wildlife Refuge Trust, Inc.

ADDRESS: 2312 Seabury Avenue, Minneapolis, MN 55406

WEB SITE ADDRESS: www.mnvalleytrust.org

FUND: Environment and Natural Resources Trust Fund

LEGAL CITATION: ML 2008, Ch. 367, Sec. 2, Subd. 3(a) -- 3.3

APPROPRIATION AMOUNT: \$225,000

Overall Project Outcome and Results

With funding support from the Environment and Natural Resources Trust Fund, as recommended by the LCCMR, the Minnesota Valley Trust acquired fee title to the following parcels containing significant floodplain forest and prairie habitat along the Minnesota River:

- 67.32 acres in Sibley County on July 24, 2008 to expand the Jessenland Unit of the Minnesota Valley National Wildlife Refuge.
- 21.5 acres in Carver County on December 31, 2009 to expand the Rapids Lake Unit of the Minnesota Valley National Wildlife Refuge.

Of the 88.82 acres acquired, the Environment and Natural Resources Trust Fund paid for 47.34 acres and the Minnesota Valley Trust paid for 41.48 acres with nonprofit and other non-state funds.

Both of these acquisitions expand upon prior acquisitions funded in part by the Environment and Natural Resources Trust Fund, as recommended by the LCCMR. The parcels acquired are adjacent to lands already protected by the Minnesota Valley Trust for the Minnesota Valley National Wildlife Refuge.

The Jessenland and Rapids Lake Units of the Refuge were identified through a public planning process by the US Fish and Wildlife Service as priority expansion units of the Minnesota Valley National Wildlife Refuge.

After restoration, the lands will be donated to the US Fish and Wildlife Service for perpetual management as part of the Minnesota Valley National Wildlife Refuge. They will be managed for wildlife and wildlife-dependent recreation, including hunting, fishing, wildlife observation, photography, wildlife interpretation and environmental education.

Project Results Use and Dissemination

The Minnesota Valley Trust will publicize the completion of this acquisition and plans for the lands through its website and news releases to the local media. After restoration is completed, the land will be donated to the Minnesota Valley National Wildlife Refuge and Wetland Management District. All funding partners will be acknowledged on Refuge kiosks, including the Environment and Natural Resources Trust Fund, as recommended by the Legislative Commission on Minnesota Resources.

Trust Fund 2008 Work Program – Final Report

Date of Report: February 1, 2010 (revised March 10, 2010)

Date of Next Status Report: NA

Date of Work program Approval:

Project Completion Date: June 30, 2010

I. PROJECT TITLE: Metro Conservation Corridors – Phase IV – Minnesota Valley Trust – 3.3

Project Manager: Deborah Loon

Affiliation: Minnesota Valley National Wildlife Refuge Trust, Inc.

Mailing Address: 2312 Seabury Avenue

City / State / Zip: Minneapolis, MN 55406

Telephone Number: 612-801-1935

E-mail Address: DebLoon@comcast.net

FAX Number: 612-728-0700

Web Page address: NA

Location: Metro Conservation Corridors Project Area 10, Minnesota River Valley

Total Trust Fund Project Budget:	Trust Fund Appropriation:	\$ 225,000
	Minus Amount Spent:	\$ 225,000
	Equal Balance:	\$ 0

Legal Citation: ML 2008, Chap. 367, Sec. 2, Subd. 3(a)

Appropriation Language: \$3,150,000 is from the trust fund to the commissioner of natural resources for the fourth appropriation for acceleration of agency programs and cooperative agreements. Of this appropriation, \$1,915,000 is for Department of Natural Resources agency programs and \$1,235,000 is for agreements as follows: \$475,000 with the Trust for Public Land; \$92,000 with Friends of the Mississippi River; \$111,000 with Great River Greening; \$225,000 with Minnesota Land Trust; \$225,000 with Minnesota Valley National Wildlife Refuge Trust, Inc.; and \$107,000 with Friends of the Minnesota Valley for the purposes of planning, restoring, and protecting important natural areas in the metropolitan area, as defined under Minnesota Statutes, section 473.121, subdivision 2, and portions of the surrounding counties, through grants, contracted services, conservation easements, and fee title acquisition. Land acquired with this appropriation must be sufficiently improved to meet at least minimum management standards as determined by the commissioner of natural resources. Expenditures are limited to the identified project corridor areas as defined in the work program. This appropriation may not be used for the purchase of residential structures, unless expressly approved in the work program. All conservation easements must be perpetual and have a natural resource management plan. Any land acquired in fee title by the commissioner of natural

resources with money from this appropriation must be designated as an outdoor recreation unit under Minnesota Statutes, section 86A.07. The commissioner may similarly designate any lands acquired in less than fee title. A list of proposed restorations and fee title and easement acquisitions must be provided as part of the required work program. All funding for conservation easements must include a long-term stewardship plan and funding for monitoring and enforcing the agreement.

II. PROJECT SUMMARY AND RESULTS: Fee title acquisition of 45 acres of significant habitat in the Minnesota River Valley within Carver, LeSueur, Scott and/or Sibley Counties. After restoration, lands will be donated to the US Fish and Wildlife Service for management as part of the Minnesota Valley National Wildlife Refuge.

III. PROGRESS SUMMARY AS OF February 5, 2009: The Minnesota Valley Trust acquired fee title to 67.32 acres of significant habitat along the Minnesota River in Sibley County on July 24, 2008. We have not filed our final report and initial land acquisition report yet, as we are negotiating on additional land to complete the leverage pledged for this grant. The wetlands and prairie will be restored on these lands in 2009. After restoration, the land will be donated to the USFWS to be managed as part of the Jessenland Unit of the Minnesota Valley National Wildlife Refuge.

PROGRESS SUMMARY AS OF August 1, 2009: No change in status. See February 5, 2009 progress summary.

PROGRESS SUMMARY AS OF FEBRUARY 1, 2010: The Minnesota Valley Trust acquired fee title to the following parcels containing significant habitat along the Minnesota River for expansion of the Minnesota Valley National Wildlife Refuge:

- 1) 67.32 acres in Sibley County on July 24, 2008 for the Jessenland Unit of the Refuge
- 2) 21.5 acres in Carver County on December 31, 2009 for the Rapids Lake Unit of the Refuge.

Of the 88.82 acres acquired, the Environment and Natural Resources Trust Fund paid for 47.34 acres and the Minnesota Valley Trust paid for 41.48 acres with nonprofit and other non-state funds.

Both of these acquisitions expand upon prior acquisitions funded in part by the Environment and Natural Resources Trust Fund, as recommended by the LCCMR. The parcels acquired are adjacent to lands already protected by the Minnesota Valley Trust for the Minnesota Valley National Wildlife Refuge.

The Jessenland and Rapids Lake Units of the Refuge were identified through a public planning process by the US Fish and Wildlife Service as priority expansion units of the Minnesota Valley National Wildlife Refuge. The parcels acquired are within the expansion boundaries of those Refuge units.

After restoration, the lands will be donated to the US Fish and Wildlife Service for perpetual management as part of the Minnesota Valley National Wildlife Refuge. They will be managed for wildlife and wildlife-dependent recreation, including hunting, fishing, wildlife observation, photography, wildlife interpretation and environmental education.

Appraised value was paid on both parcels:

- 1) \$332,405 on the 67.32 acres in Sibley County for Jessenland Unit
- 2) \$86,000 on the 21.5 acres in Carver County for Rapids Lake Unit.

Transaction costs for the acquisitions were as follows:

- 1) \$2,544.40 on the 67.32 acres in Sibley County for Jessenland Unit -- \$399 legal, \$800 appraisal, \$1,345.50 closing, title insurance, recording fees
- 2) \$2,035.80 on the 21.5 acres in Carver County for Rapids Lake Unit -- \$682 legal, \$900 appraisal, \$453.80 closing, title insurance, recording fees

Total cost of the two acquisitions -- \$422,985.20. Funds for the acquisitions came from several sources:

- 1) Environment and Natural Resources Trust Fund -- \$225,000
- 2) North American Wetland Conservation Act grant funds -- \$75,000
- 3) MN Valley Trust funds -- \$122,985.20

IV. OUTLINE OF PROJECT RESULTS:

Result 1:

Description: Fee title acquisition of 45 acres of significant habitat in the Minnesota River Valley within Carver, Scott and/or Sibley Counties. The Minnesota Valley Trust will leverage these grant funds and acquire an additional 45 acres or more with other funds.

The Trust is working with multiple landowners within the following expansion units of the Minnesota Valley National Wildlife Refuge, as delineated by the US Fish and Wildlife Service. We anticipate completing at least one acquisition with the Trust Funds in the following target areas, expanding the Refuge:

- Rapids Lake Unit – San Francisco Township, Carver County
- San Francisco Unit - San Francisco Township, Carver County
- Jessenland Unit - Faxon and Jessenland Townships, Sibley County
- Ahlswede Unit - Scott County and
- St. Lawrence Unit - St. Lawrence Township, Scott County.

The lands to be acquired have been identified by the US Fish and Wildlife Service as offering significant habitat for wildlife and opportunities for wildlife-dependent recreation. The lands generally run along the Minnesota River and include floodplain, cropland and bluffs. Some of the targetted lands are adjacent to lands already in public ownership (FWS, DNR). These acquisitions will connect floodplain

forest and prairie habitat in the Minnesota River bottoms, benefiting many species of wildlife including wood ducks, mallards, bald eagles, grassland nesting birds as well as numerous resident game species such as turkeys and deer.

After acquisition and restoration of the habitat by the Minnesota Valley Trust and other partners, the lands will be donated and conveyed to the US Fish and Wildlife Service for management as part of the Minnesota Valley National Wildlife Refuge.

This project will benefit wildlife and improve water quality by retiring cropland in the Minnesota River Valley and restoring lands to the natural habitats of floodplain forest, wetlands and prairie. When donated to the USFWS, the public will be given access to the lands for wildlife-dependent recreational activities, such as birding, photography, hiking, hunting and fishing.

Summary Budget Information for Result 1:

Trust Fund Budget:	\$ 225,000
Amount Spent:	\$ 0
Balance:	\$ 225,000

Deliverable	Completion Date	Budget	Status
1. Acquire 45 acres	June 30, 2010	\$225,000	Complete

Completion Date: June 30, 2010

Result Status as of February 1, 2009: The Minnesota Valley Trust acquired fee title to 67.32 acres of significant habitat along the Minnesota River in Sibley County on July 24, 2008. We have not filed our final report and initial land acquisition report yet, as we are negotiating on additional land to complete the leverage pledged for this grant. The wetlands and prairie will be restored on these lands in 2009. After restoration, the land will be donated to the USFWS to be managed as part of the Jessenland Unit of the Minnesota Valley National Wildlife Refuge.

Result Status as of August 1, 2009: No change in status. See status as of February 1, 2009.

Result Status as of February 1, 2010: See final report summary.

Final Report Summary: The Minnesota Valley Trust acquired fee title to the following parcels containing significant habitat along the Minnesota River for expansion of the Minnesota Valley National Wildlife Refuge:

- 1) 67.32 acres in Sibley County on July 24, 2008 for the Jessenland Unit of the Refuge
- 2) 21.5 acres in Carver County on December 31, 2009 for the Rapids Lake Unit of the Refuge.

Both of these acquisitions expand upon prior acquisitions funded in part by the Environment and Natural Resources Trust Fund, as recommended by the LCCMR. The parcels acquired are adjacent to lands already protected by the Minnesota Valley Trust for the Minnesota Valley National Wildlife Refuge.

The Jessenland and Rapids Lake Units of the Refuge were identified through a public planning process by the US Fish and Wildlife Service as priority expansion units of the Minnesota Valley National Wildlife Refuge. The parcels acquired are within the expansion boundaries of those Refuge units.

After restoration, the lands will be donated to the US Fish and Wildlife Service for perpetual management as part of the Minnesota Valley National Wildlife Refuge. They will be managed for wildlife and wildlife-dependent recreation, including hunting, fishing, wildlife observation, photography, wildlife interpretation and environmental education.

V. TOTAL TRUST FUND PROJECT BUDGET:

Staff or Contract Services: \$0

Equipment: \$0

Development: \$ 0

Restoration: \$ 0

Acquisition, including easements: \$ 225,000 for fee title acquisition of at least 45 acres. After Trust acquisition and restoration, the land will be donated to the USFWS for perpetual management as part of the Minnesota Valley National Wildlife Refuge.

Other: \$0

TOTAL TRUST FUND PROJECT BUDGET: \$ 225,000

Explanation of Capital Expenditures Greater Than \$3,500:

VI. OTHER FUNDS & PARTNERS:

A. Project Partners: US Fish & Wildlife Service, Friends of the Minnesota Valley, local units of government and other partners

B. Other Funds Proposed to be Spent during the Project Period: \$225,000

C. Past Spending: 2001: \$ 0; 2003: \$ 98,300 (HCP) and \$290,000 (MeCC); 2005: \$ 50,400 (HCP) and \$230,000 (MeCC); 2007: \$100,000 (HCP) and \$210,000 (MeCC)

D. Time: 2 years: July 1, 2008 – June 30, 2010

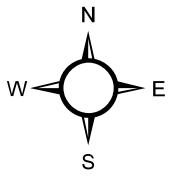
VII. DISSEMINATION: As projects are completed, the Minnesota Valley Trust will announce the accomplishments through press releases and the Trust's website.

VIII. REPORTING REQUIREMENTS:

Periodic work program progress reports will be submitted not later than February 1 and August 1 of each year. A final work program report and associated products will be submitted between June 30 and August 1, 2009 or 2010 as requested by the LCCMR.

IX. RESEARCH PROJECTS: NA

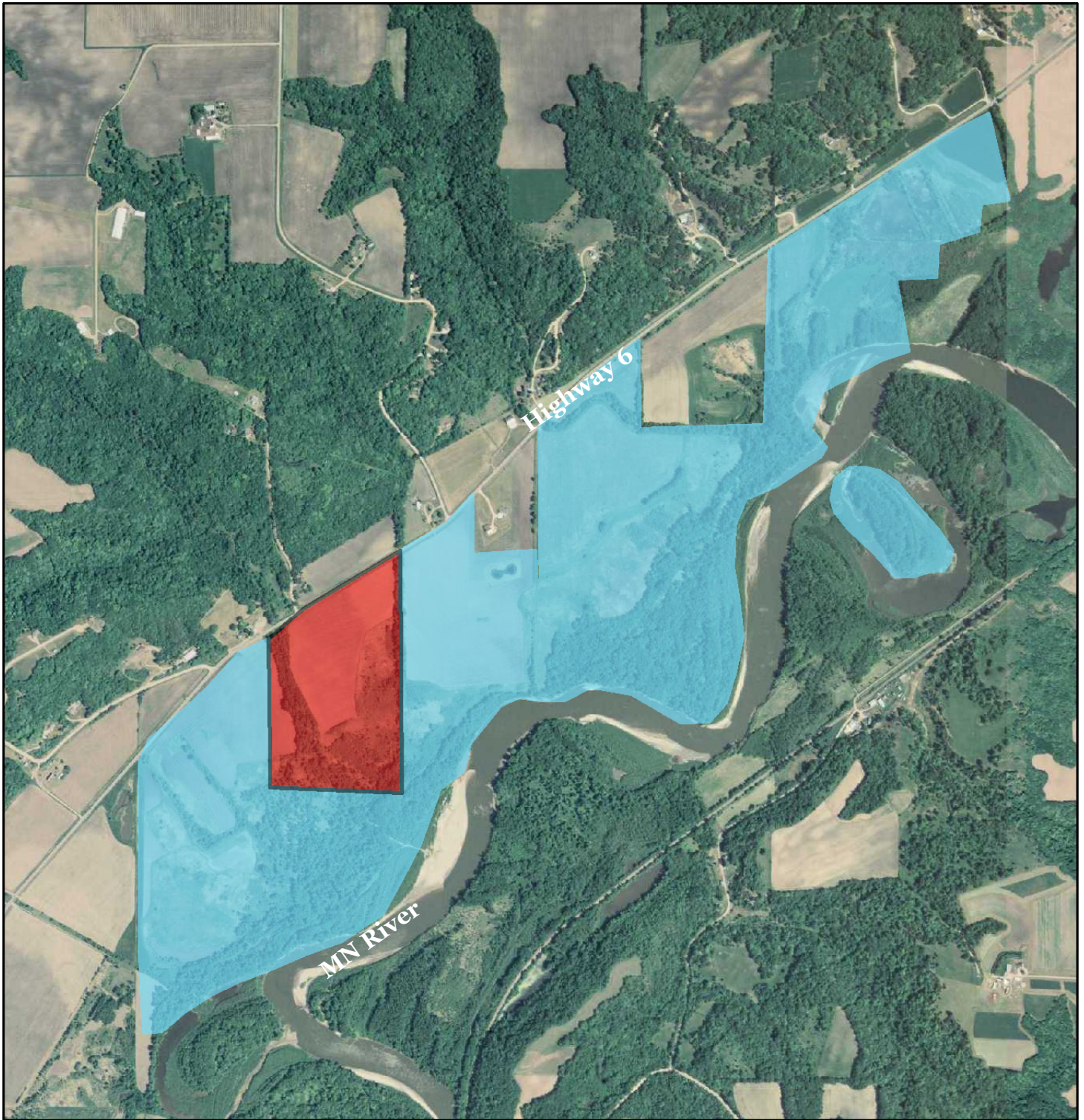
Attachment A: Budget Detail for 2008 Projects					
Project Title: Metro Conservation Corridors Phase IV - Minnesota Valley National Wildlife Refuge Trust - 3.3					
Project Manager Name: Deborah Loon, Minnesota Valley National Wildlife Refuge Trust.					
Trust Fund Appropriation: \$ 225,000					
1) See list of non-eligible expenses, do not include any of these items in your budget sheet					
2) Remove any budget item lines not applicable					
2008 Trust Fund Budget	<u>Result 1 Budget:</u>	Amount Spent 2.1.10	Balance 2.1.10	TOTAL BUDGET	TOTAL BALANCE
	Acquire 45 acres of significant habitat in project area 10 of Metro Conservation Corridors.				
BUDGET ITEM			0	0	0
Land acquisition	225,000	225,000	0	225,000	0
COLUMN TOTAL	\$225,000	\$225,000	\$0	\$225,000	\$0



Jessenland Unit Addition

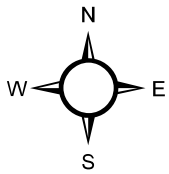
MN Valley National Wildlife Refuge - Sibley County, MN

T113N, R26W, S13



0 0.5 1 Miles

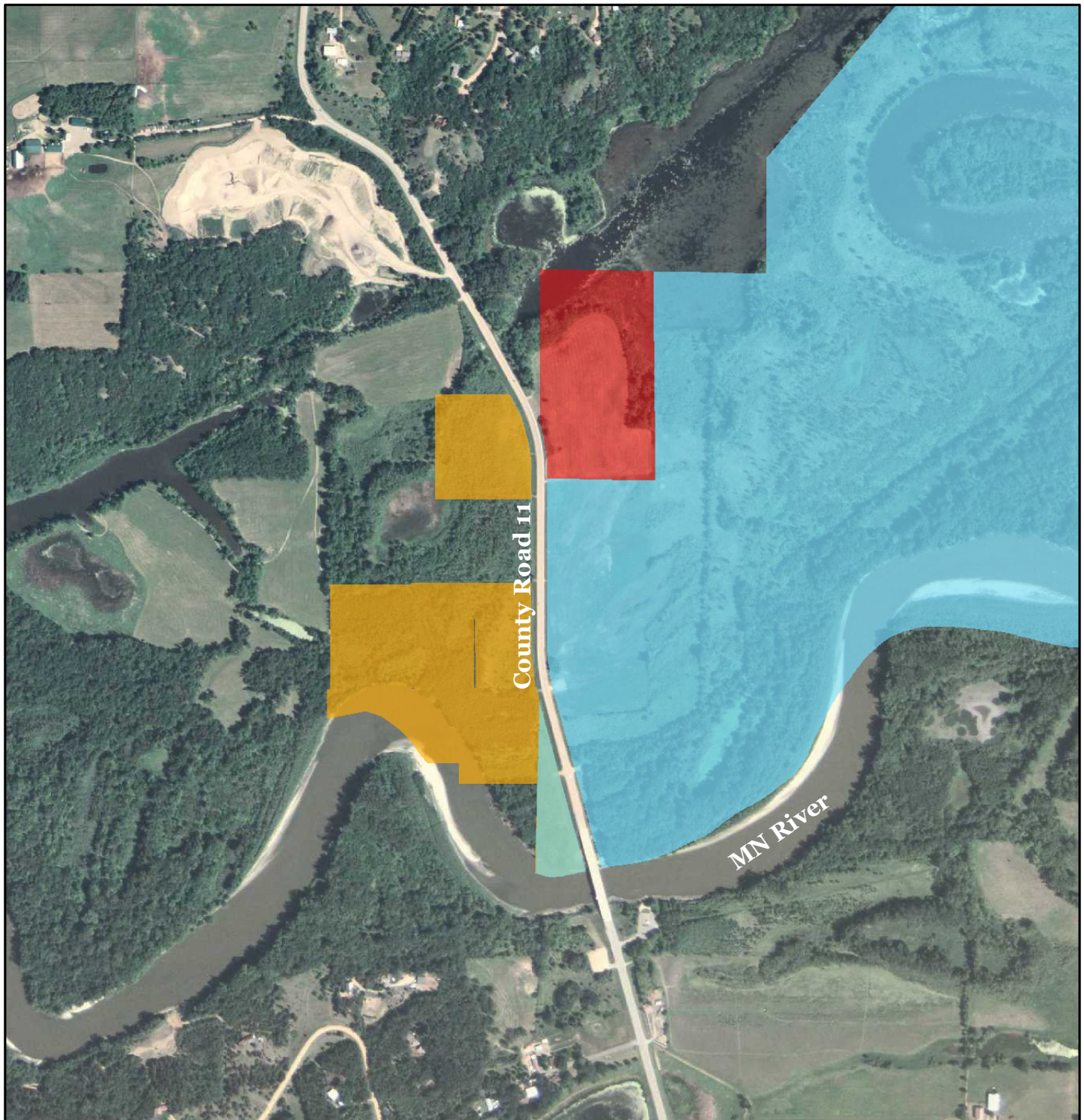
-  **Jessenland Unit Addition**
-  **Jessenland Unit - MN Valley NWR**






Rapids Lake Unit Addition

MN Valley National Wildlife Refuge - Carver County, MN

T114N, R23W, S7



0 0.3 0.6 Miles

-  Rapids Lake Unit Addition - 21.5 Acres
-  Rapids Lake Unit - MN Valley NWR
-  San Francisco Unit - MN Valley NWR

