

## **2008 Project Abstract**

For the Period Ending June 30, 2010

**PROJECT TITLE:** Metro Conservation Corridors-Phase IV-Friends of the Minnesota Valley (2.2)

**PROJECT MANAGER:** Lori Nelson

**AFFILIATION:** Friends of the Minnesota Valley

**MAILING ADDRESS:** 10800 Lyndale Avenue South, Suite #120

**CITY/STATE/ZIP:** Bloomington, MN 55420

**PHONE:** 952-881-9065

**E-MAIL:** lnelson@friendsofminnvalley.org

**WEBSITE:** [www.friendsofminnvalley.org](http://www.friendsofminnvalley.org)

**FUNDING SOURCE:** Environment and Natural Resources Trust Fund

**LEGAL CITATION:** M.L. 2008, Chp. 367, Sec. 2, Subd. 3(a)

## **APPROPRIATION AMOUNT: \$107,000**

### **Overall Project Outcome and Results**

Friends of the Minnesota Valley (FMV) undertook restoration of habitat for the Lower Minnesota River Watershed portion of the Metropolitan Conservation Corridors Project (MeCC) as a continuation of our wildlife habitat restoration within the Minnesota Valley National Wildlife Refuge and Wetland Management District (Refuge) and within the Lower Minnesota River Watershed. FMV sought to restore native habitats within the Refuge and to work in concert with the Minnesota Valley National Wildlife Refuge Trust and other partners on newly-acquired lands slated for addition to the Refuge.

The Friends' objectives were to complement and connect habitat restoration and management of Refuge lands with that being done by other entities. Restoration sites were selected to address primary management issues and challenges, including the need to restore hydrology and manage water levels to maximize benefits to waterfowl and other wetland-dependent species and restore native oak savanna and wet and dry prairies. Public access to restored lands for recreation and education and the assurance of permanent protection were also primary factors.

FMV was able to successfully restore and enhance 460 acres of permanently-protected wetland during MeCC Phase IV. We also completed 22.5 acres of native prairie and oak savanna restoration on three Refuge Units. Work included replacement of water control structures, breaking drain tile, shallow scraping, construction of earthen dams, tree removal, and planting of native seed. Minnesotans will be able to access and appreciate the restored sites through the access and education provided to Minnesota Valley National Wildlife Refuge visitors. Our project data is publicly accessible by contacting the Friends, through information disseminated through our newsletter and on our website, and through information provided by the MeCC Partnership. We are also currently planning a guided tour of Phase IV restoration sites for interested parties.

### **Project Results Use and Dissemination**

As projects were completed, Friends of the Minnesota Valley publicized project accomplishments through the Friends' quarterly newsletter, in our annual reports, and on our website. Other dissemination of information has been through the Metro Corridors partnership, Embrace Open Space, and on the Metro Corridors website.

## Trust Fund 2008 Work Program Final Report

**Date of Report:** August 1, 2010

**Final Report**

**Date of Work program Approval:**

**Project Completion Date:** June 30, 2010

### ***I. PROJECT TITLE: Metro Conservation Corridors – Phase IV – Friends of the Minnesota Valley (2.2)***

**Project Manager:** Lori Nelson  
**Affiliation:** Friends of the Minnesota Valley  
**Mailing Address:** 10800 Lyndale Avenue South, Suite 120  
**City / State / Zip:** Bloomington, MN 55420  
**Telephone Number:** 952-881-9065  
**E-mail Address:** [lnelson@friendsofmnvalley.org](mailto:lnelson@friendsofmnvalley.org)  
**FAX Number:** 952-881-3174  
**Web Page address:** [www.friendsofmnvalley.org](http://www.friendsofmnvalley.org)

**Location:** Minnesota River Valley within Carver, LeSueur, Scott and/or Sibley Counties within the Metro Corridors. See Figure 1

<b>Total Trust Fund Project Budget:</b>	<b>Trust Fund Appropriation:</b>	<b>\$ 107,000</b>
	<b>Minus Amount Spent:</b>	<b>\$ 106,900</b>
	<b>Equal Balance:</b>	<b>\$ 100</b>

**Legal Citation:** M.L. 2008, Chp. 367, Sec. 2, Subd. 3(a)

**Appropriation Language:** (a) Metro Conservation Corridors (MeCC) - Phase IV \$3,150,000 is from the trust fund to the commissioner of natural resources for the fourth appropriation for acceleration of agency programs and cooperative agreements. Of this appropriation, \$1,915,000 is for Department of Natural Resources agency programs and \$1,235,000 is for agreements as follows: \$475,000 with the Trust for Public Land; \$92,000 with Friends of the Mississippi River; \$111,000 with Great River Greening; \$225,000 with Minnesota Land Trust; \$225,000 with Minnesota Valley National Wildlife Refuge Trust, Inc.; and \$107,000 with Friends of the Minnesota Valley for the purposes of planning, restoring, and protecting important natural areas in the metropolitan area, as defined under Minnesota Statutes, section 473.121, subdivision 2, and portions of the surrounding counties, through grants, contracted services, conservation easements, and fee title acquisition. Land acquired with this appropriation must be sufficiently improved to meet at least minimum management standards as determined by the commissioner of natural resources. Expenditures are limited to the identified project corridor areas as defined in the work program. This appropriation may not be used for the purchase of residential structures, unless expressly approved in the work program.

All conservation easements must be perpetual and have a natural resource management plan. Any land acquired in fee title by the commissioner of natural resources with money from this appropriation must be designated as an outdoor recreation unit under Minnesota Statutes, section 86A.07. The commissioner may similarly designate any lands acquired in less than fee title. A list of proposed restorations and fee title and easement acquisitions must be provided as part of the required work program. All funding for conservation easements must include a long-term stewardship plan and funding for monitoring and enforcing the agreement.

## **II. and III. FINAL PROJECT SUMMARY**

### **Overall Project Outcome and Results:**

Friends of the Minnesota Valley (FMV) undertook restoration of habitat for the Lower Minnesota River Watershed portion of the Metropolitan Conservation Corridors Project (MeCC) as a continuation of our wildlife habitat restoration within the Minnesota Valley National Wildlife Refuge and Wetland Management District (Refuge) and within the Lower Minnesota River Watershed. FMV sought to restore native habitats within the Refuge and to work in concert with the Minnesota Valley National Wildlife Refuge Trust and other partners on newly-acquired lands slated for addition to the Refuge.

The Friends' objectives were to complement and connect habitat restoration and management of Refuge lands with that being done by other entities. Restoration sites were selected to address primary management issues and challenges, including the need to restore hydrology and manage water levels to maximize benefits to waterfowl and other wetland-dependent species and restore native oak savanna and wet and dry prairies. Public access to restored lands for recreation and education and the assurance of permanent protection were also primary factors.

FMV and our partners were able to successfully restore and enhance 460 acres of permanently-protected wetland during MeCC Phase IV. We also completed 22.5 acres of native prairie and oak savanna restoration on three Refuge Units. Work included replacement of water control structures, breaking drain tile, shallow scraping, construction of earthen dams, tree removal, and planting of native seed. Minnesotans will be able to access and appreciate the restored sites through the access and education provided to Minnesota Valley National Wildlife Refuge visitors. Our project data is publicly accessible by contacting the Friends, through information disseminated through our newsletter and on our website, and through information provided by the MeCC Partnership. We are also currently planning a guided tour of Phase IV restoration sites for interested parties.

## **IV. OUTLINE OF PROJECT RESULTS:**

### **Result 1: Restore and Enhance Significant Habitat**

**Description:** Within the focus areas, Friends of the Minnesota Valley has restored and enhanced 100 acres of regionally-significant habitat (plus another 53.5 acres

through leveraged funds for a total of 153.5 acres). Friends of the Minnesota Valley and its partners took steps to restore and enhance native plant species of significant biological and habitat communities throughout the Expanded Minnesota River Focus Area on public and private lands.

Restoration work included, but was not be limited to: wetland restorations, native prairie restorations and plantings, floodplain habitat restoration, exotic species removal, woody plant removal, and all other activities associated will these restoration projects.

**Project List:**

*Rapids Lake Wetland Restoration/Enhancement*

*Lake Renneberg Restoration*

*Upgrala Prairie Renovation*

*St. Lawrence Wet Prairie*

*Jessenland Unit Restoration*

*Rapids Lake Unit Dry Prairie Restoration*

**Summary Budget Information for Result 1:**    **Trust Fund Budget: \$107,000**  
**Amount Spent: \$106,900**  
**Balance: \$100**

<b>Deliverable</b>	<b>Completion Date</b>	<b>Budget</b>	<b>Status</b>
1. 100 acres restored	6/30/10	\$107,000	Complete

**Completion Date:** June 30, 2010

**Final Report Summary:**

*Rapids Lake Wetland Restoration/Enhancement*

Friends of the Minnesota Valley along with the USFWS, MN DNR, MN Valley Trust, and Carver County SWCD successfully designed and installed a water control structure on the outlet to Rapids Lake, a large 260 acre Type IV riverine wetland within the Minnesota Valley National Wildlife Refuge near the City of Carver, MN. The water control structure will restore the hydrology of the wetland and will enable the USFWS to manage water levels to maximize benefits to wetland dependant

plant and animal species. The restoration work will be protected and managed in perpetuity by the USFWS. The majority of the project costs were paid for with Friends of the MN Valley 2007 Phase III funding. The remaining costs were paid utilizing this phase of funding for a total of 28 acres worth of the restoration project. Match dollars from partners includes NRCS (\$191,917) and USFWS (\$5,000).

#### *Lake Renneberg Restoration*

Friends of the Minnesota Valley along with the USFWS, LeSueur County, and the McKnight Foundation successfully completed the restoration work on Lake Renneberg in Derrynane Township of Le Sueur County. This 120 acre shallow lake, drained by a county ditch, was restored by installing a variable crest water control structure. The structure will allow temporary draw-downs of water levels to stimulate plant germination and invertebrate populations. The All restoration work will be permanently protected and managed by Le Sueur County. Restoration acres were prorated based on percent of funding for the project. Phase IV funding accounted for 78% of the total project costs, 93 acres. Match dollars from partners includes NAWCA (\$9,658), USFWS (\$2,000.50), Joint Powers Board/ RC&D – Area 10 (\$13,000), and FMV (\$5,000).

#### *Upgrala Prairie Restoration*

Friends of the Minnesota Valley, along with the USFWS, restored 3.5 acres of native dry prairie remnant at the Upgrala Unit of the Minnesota Valley National Wildlife Refuge through woody species removal and treatment. The remaining anticipated 4.6 acres were not completed in Phase IV due to fragile site conditions and eagle nests. This restoration site will be completed in MeCC Phases V & V Supplemental. The project site is permanently protected and will continue to be managed in perpetuity by the USFWS. Phase IV funding accounted for 100% of the total project costs, 3.5 acres. Partner match includes USFWS (\$800).

#### *St. Lawrence Wet Prairie Restoration*

Friends of the Minnesota Valley and the USFWS restored 9 acres of wet prairie. The full 30 anticipated acres were not completed due to poor site conditions, increasing costs and follow-up needs. Additional acres will be completed under MeCC Phase V & Phase V Supplemental for oak savanna and prairie restoration. The restored acreage is permanently protected and will continue to be managed in perpetuity by the USFWS. Phase IV funding accounted for 100% of the total project costs, 9 acres. Partner match includes USFWS (\$2,500).

#### *Jessenland Unit Restoration*

Friends of the Minnesota Valley and the USFWS restored 10 acres of wetland habitat by breaking tile, shallow scraping, and the construction of earthen dams. Wetlands will be seeded with native wetland species after July 1, 2010, due to previous Minnesota River flooding conditions. Phase IV funding accounted for 100% of the total project costs, 10 acres. Partner match includes USFWS (\$750).

#### *Rapids Lake Dry Prairie Restoration*

Friends of the Minnesota Valley and the USFWS completed 10 acres of dry prairie enhancement at the Rapids Lake Unit Environmental and Education Center

near Jordan, Minnesota, primarily through over-snow seeding. The restored prairie will permanently protected and managed in perpetuity by the USFWS, Phase IV funding accounted for 100% of total project costs, 10 acres. Partner match includes USFWS (\$874).

## **V. TOTAL TRUST FUND PROJECT BUDGET:**

**Staff or Contract Services:** \$8,000 (Director of Conservation Programs, Project Design, Coordination and Implementation .20 FTE). Total expended during grant period: \$8,000.

**Equipment:** NA

**Development:** NA

**Restoration:** \$99,000 (supplies, seed and tree purchase, field preparation, prescribed burns, contractor services for installing earthen berms or water control structures for wetland restorations, engineering, and all other activities as needed for the restoration of 100 acres). Total expended during grant period: \$98,900.

**Acquisition, including easements:** NA

**Other:** NA

## **TOTAL TRUST FUND PROJECT BUDGET: \$107,000**

Total expended during project period: \$106,900.

**Explanation of Capital Expenditures Greater Than \$3,500:** NA

## **VI. OTHER FUNDS & PARTNERS:**

**A. Project Partners** The Friends of the MN Valley worked in cooperation with Metro Conservation Corridor partners (see Table A), private landowners, local governments including Soil and Water Conservation Districts, regional, state and federal agencies such as the NRCS and the USFWS, nonprofit organizations and local citizen groups.

### **B. Other Funds Proposed to be Spent during the Project Period:**

Original anticipated match was \$54,000. Other funds actually spent during the grant period totalled \$231,499.50.

**C. Past Spending:** ETF - 2001: \$ 0; 2003: \$ 18,000 (BRP); 2005: \$ 40,000 (MeCC)  
2007: \$34,000  
Other Funds - : \$ 0; 2003: \$ 0; 2005: \$ 5,000 (MeCC)

**D. Time:** Friends of the Minnesota Valley has expended these funds within 12-15 months of their availability. July 1, 2008 – June 30, 2010.

**VII. DISSEMINATION:** As projects were completed, Friends of the Minnesota Valley publicized project accomplishments through the Friends' quarterly newsletter, in our annual reports, and on our website. Other dissemination of information has

been through the Metro Corridors partnership, Embrace Open Space, and on the Metro Corridors website.

**VIII. REPORTING REQUIREMENTS:**

Periodic work program progress reports have been submitted not later than February 1<sup>st</sup> and August 1<sup>st</sup> of each year. A final work program report and associated products has been submitted as of August 1, 2010 as requested by the LCCMR.

**IX. RESEARCH PROJECTS: NA**

Attachment A: Budget Detail for 2008 Projects					
Project Title: <u>Metro Conservation Corridors – Phase IV – Friends of the Minnesota Valley (2.2)</u>					
Project Manager Name: Scott Sparlin					
Trust Fund Appropriation: \$ 107,000					
1) See list of non-eligible expenses, do not include any of these items in your budget sheet					
2) Remove any budget item lines not applicable					
2008 Trust Fund Budget	<u>Result 1 Budget:</u>	Amount Spent	Balance	TOTAL BUDGET	TOTAL BALANCE
	<i>Restore and Enhance Significant Habitat</i>				
BUDGET ITEM					
PERSONNEL: Conservation Projects Manager (.20 FTE): Project Design, Coordination and Implementation	8,000	8,000	0	8,000	0
Contracts			0	0	0
Professional/technical (Construction companies for earth work such as building dikes, installing water control structures, breaking drain tile, and other activities that require heavy equipment, survey and engineering work, field prep, prairie installation, etc.)	59,874	59,774	100	59,874	100
Other land improvement (native prairie seed, trees, water control structures, etc.)	39,126	39,126	0	39,126	0
COLUMN TOTAL	\$107,000	\$106,900	\$100	\$107,000	\$100





U.S. Fish and Wildlife Service

## Jessenland Unit MeCC Project



00.00.02 0.04 0.06 0.08  
Miles

### Legend

- Wetland\_Restored
- township
- Refuge
- county

**Sibley County  
Jessenland Township  
Section 13**

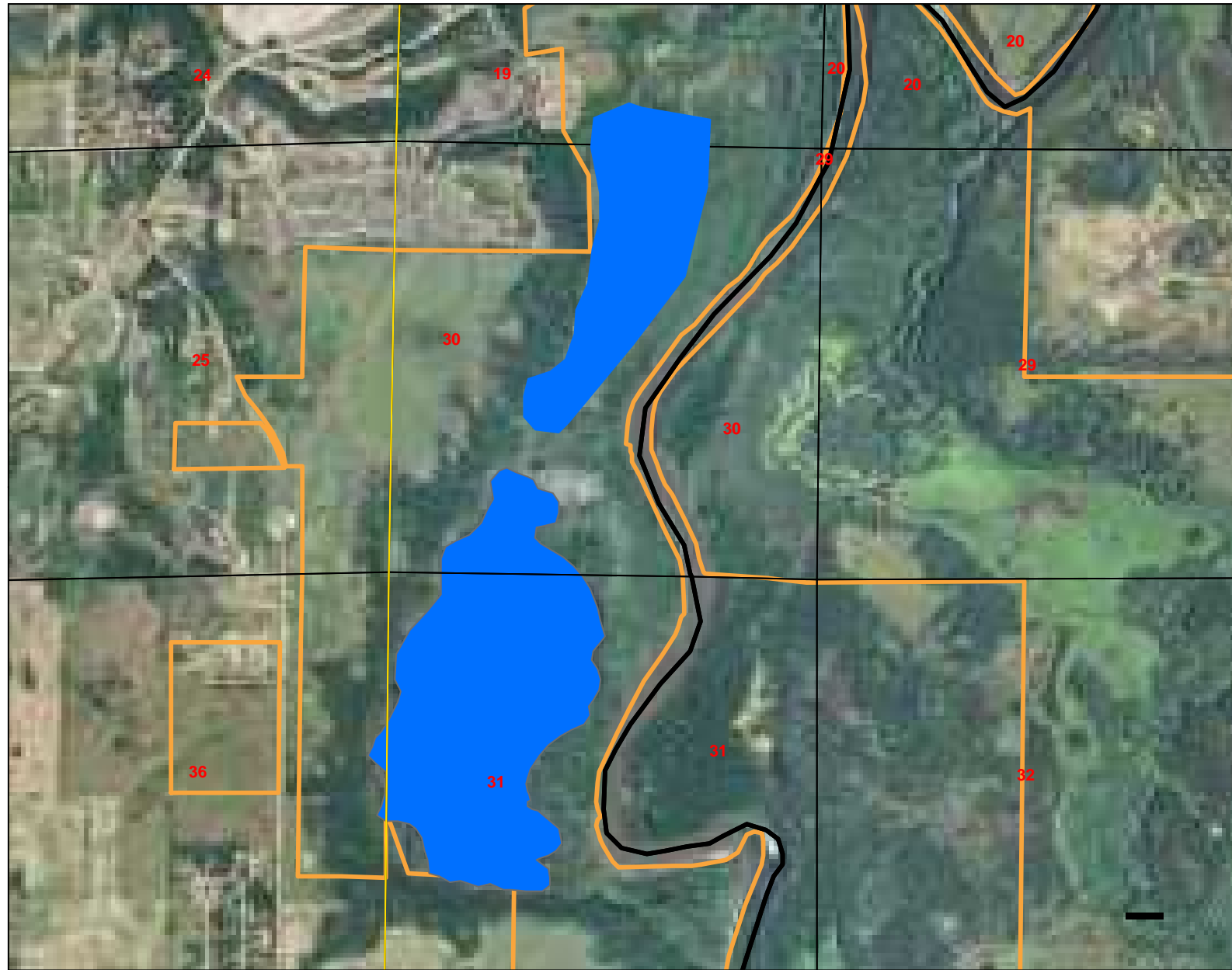


Minnesota Valley NWR/ WMD  
Please call 952.854-5900 or visit <http://midwest.fws.gov/minnesotavalley>



U.S. Fish and Wildlife Service

## Rapids Lake MeCC Project



### Legend

- Wetland\_Restored
- township
- Refuge
- county

0.0 0.1 0.2 0.3 0.4  
Miles

**Carver County**  
**San Francisco Township**  
**Section 31**



Minnesota Valley NWR/ WMD  
Please call 952.854-5900 or visit <http://midwest.fws.gov/minnesotavalley>



U.S. Fish and Wildlife Service

## Rapids Lake Unit MeCC Project



0.005 0.010 0.020 0.030 0.04  
Miles

### Legend

- Grassland\_resto
- township
- Refuge
- county

**Carver County**  
**San Francisco Township**  
**Section 6**



Minnesota Valley NWR/ WMD  
Please call 952.854-5900 or visit <http://midwest.fws.gov/minnesotavalley>



U.S. Fish and Wildlife Service

## Renneberg Lake MeCC Project



### Legend

- Wetland\_Restored
- township
- Refuge
- county

0.005 0.1 0.15 0.2 Miles

**Le Sueur County  
Derrynane Township  
Section 14**



Minnesota Valley NWR/ WMD  
Please call 952.854-5900 or visit <http://midwest.fws.gov/minnesotavalley>



U.S. Fish and Wildlife Service

## St Lawrence Unit MeCC Project



### Legend

- Grassland\_resto
- Township
- Refuge
- County

0 0.025 0.05 0.1  
Miles

**Scott County  
St Lawrence Township  
Section 27**



Minnesota Valley NWR/ WMD  
Please call 952.854-5900 or visit <http://midwest.fws.gov/minnesotavalley>



U.S. Fish and Wildlife Service

## Upgrala Unit MeCC Project



### Legend

- Grassland\_resto
- Township
- Refuge
- County

0.01 0.03 0.06  
Miles

**Hennepin County  
Eden Prairie Township  
Section 23 & 28**



Minnesota Valley NWR/ WMD  
Please call 952.854-5900 or visit <http://midwest.fws.gov/minnesotavalley>