

2005 Project Abstract

For the Period Ending June 30, 2008

TITLE: Metro Conservation Corridors – Phase II

PROJECT MANAGER: Wayne Sames

ORGANIZATION: Minnesota Department of Natural Resources

ADDRESS: OMBS, Box 10, 500 Lafayette Road

WEB SITE ADDRESS: wayne.sames@dnr.state.mn.us

FUND: Environment and Natural Resources Trust Fund

LEGAL CITATION: ML 2005, 1st Spec. Sess., Chap. 1, Art. 2, Sec. 11, Subd. 5b

APPROPRIATION AMOUNT: \$3,530,000

Overall Project Outcome and Results

The key objectives and results of this program are to accelerate agency programs and cooperative agreements with partners organizations for the purposes of planning, improving, and protecting important natural areas in the metropolitan region and portions of surrounding counties through grants, contracted services, conservation easements, and fee acquisition.

The primary results of the program were:

- Restoration of 2,026 acres of habitat
- Protection of approximately 2.4 miles of shoreline
- Fee and easement acquisition of 2,973 acres

See individual partner work programs for detailed information on individual projects.

Project Results, Use and Dissemination

The Metro Corridors partnership distributed information about the program and projects through the widely broadcasted e-mails to people on the Regional Greenways Collaborative (RGC) database, through the RGC quarterly meetings, and jointly held county meetings. As projects were completed, the partners publicized accomplishments through press releases and organization newsletters and websites.

LCMR Final Work Program Report

OVERALL FINAL REPORT

Date of Report: December, 2008
Date of Work program Approval: June 14, 2005
Project Completion Date: June 30, 2008

I. PROJECT TITLE: Metro Conservation Corridors – Phase II – Overall Summary

Project Manager: Wayne Sames
Affiliation: Minnesota Department of Natural Resources
Mailing Address: OMBS, Box 10, 500 Lafayette Road
City / State / Zip: St. Paul, MN 55155-4010
Telephone Number: 651-259-5559
E-mail Address: wayne.sames@dnr.state.mn.us
FAX Number: 651-296-6047
Web Page address: www.dnr.state.mn.us

Location: Within mapped Focus Areas and within the counties of Anoka, Carver, Chisago, Dakota, Goodhue, Hennepin, Isanti, LeSueur, Nicollet, Ramsey, Rice, Scott, Sherburne, Sibley, and Washington. See Figure 1.

Total Biennial LCMR Project Budget:	LCMR Appropriation:	\$3,530,000
	Minus Amount Spent:	\$3,529,655
	Equal Balance:	\$345

Legal Citation: ML 2005, 1st Spec. Sess., Chap. 1, Art. 2, Sec. 11, Subd.5b.

Appropriation Language: Metropolitan Area Wildlife Corridors – Phase II. \$1,765,000 the first year and \$1,765,000 the second year are from the trust fund to the commissioner of natural resources for the second biennium for acceleration of agency programs and cooperative agreements with the Trust for Public Land, Ducks Unlimited, Inc., Friends of the Mississippi River, Great River Greening, Minnesota Land Trust, Minnesota Valley National Wildlife Refuge Trust, Inc., Pheasants Forever, Inc. and Friends of the Minnesota Valley for the purposes of planning, improving, and protecting important natural areas in the metropolitan region, as defined by Minnesota Statutes, section 473.121, subdivision 2 and portions of the surrounding counties, through grants, contracted services, conservation easements, and fee acquisition. Land acquired with this appropriation must be sufficiently improved to meet at least minimum management standards as determined by the commissioner of natural resources. Expenditures are limited to the identified project areas as defined in the work program. This appropriation may not be used for the purchase of residential structures, unless expressly approved in the work program.

Any land acquired in fee title by the commissioner of natural resources with money from this appropriation must be designated: (1) as an outdoor recreation unit under Minnesota Statutes, section 86A.07; or (2) as provided in Minnesota Statutes, sections 89.018, subdivision 2, paragraph (a); 97A.101; 97A.125; 97C.001; and 97C.011. The commissioner may similarly designate any lands acquired in less than fee title. This appropriation is available until June 30, 2008, at which time the project must be completed and final products delivered, unless an earlier date is specified in the work program.

II. and III. FINAL PROJECT SUMMARY:

Overall Project Outcome and Results

The key objectives and results of this program are to accelerate agency programs and cooperative agreements with partner organizations for the purposes of planning, improving, and protecting important natural areas in the metropolitan region and portions of surrounding counties through grants, contracted services, conservation easements, and fee acquisition.

The primary results of the program were:

- Restoration of 2,026 acres of habitat
- Protection of approximately 2.4 miles of shoreline
- Fee and easement acquisition of 2,973 acres

See Outline of Project Results below for detailed information on individual projects.

Project Results, Use and Dissemination

The Metro Corridors partnership distributed information about the program and projects through the widely broadcast e-mails to people on the Regional Greenways Collaborative (RGC) database, through the RGC quarterly meetings, and jointly held county meetings. As projects were completed, the partners publicized accomplishments through press releases and organization newsletters and websites.

IV. OUTLINE OF PROJECT RESULTS:

RESULT 1: COORDINATE METRO CONSERVATION CORRIDORS & METRO GREENWAYS PROGRAMS

Final Report Summary: Work of the 12 partners to conserve wildlife habitat threatened by development was coordinated to increase cooperation and effectiveness. Potential project areas were identified and mapped through cooperation between the Metro Corridors and local partners. Stakeholders in participating counties were provided with information and technical assistance regarding conservation in the Metro Corridors focus area. Communications, training,

and outreach were be coordinated between the partners and with other greater Metro conservation collaborative groups. Overall program management and specific site project management was provided by the Metro Greenways program component.

Summary Budget Information for Result 1:	LCMR Budget	\$160,000*
	Spent	\$ 160,000
	Balance	\$ 0

RESULT 2: RESTORE & ENHANCE SIGNIFICANT HABITAT

Final Report Summary: Seven partner organizations restored and/or enhance 2,026 acres of significant upland and/or wetland habitat.

Part 2.1 Wetland Restoration & Enhancement (Ducks Unlimited):

DU enhanced 400-acre Mud Lake on the Carlos Avery WMA in Chisago County. DU provided bio-engineering services to DNR Wildlife Management Area field staff to survey, design and construct a new outlet water control structure and fish barrier. Mud Lake is a 400-acre shallow lake with maximum depths only four or five feet, and a history of growing wild rice and providing quality habitat for waterfowl. Prior to the project, water quality and wildlife habitat value of Mud Lake was poor do to the presence of carp and other invasive fish and stable water levels. The new outlet water control structure designed and installed by DU will allow the Minnesota DNR Wildlife field staff to independently manage Mud Lake water levels, while also limiting fish access into the basin from the downstream Sunrise River to the east. The new outlet structure is also being used by the DNR to temporarily draw-down Mud Lake to winterkill carp and rejuvenate aquatic plants such as wild rice, which will improve both water quality and wildlife habitat value of Mud Lake.

Pat 2.2 Grassland Enhancement and Restoration Initiative (Pheasants Forever)

Twenty-seven projects totaling 386.1 acres were completed as a result of the Grassland Enhancement & Restoration Initiative. In addition, a MN Wanner ATV pump sprayer was purchased. This equipment improves the safety of personnel and volunteers and improves the ability to conduct prescription buns on wet or rugged terrain. Restoration of grasslands within the Metro Area Wildlife Corridors Project is important to the conservation of soil, water, wildlife, and quality of life (open space) in the metropolitan area. Working hand in hand with landowners interested in restoring and managing grasslands is vital to future of conservation efforts in Minnesota. Many local partners in addition to the landowners were involved, including the local USDFA office staff and several SWCDs. The support provided to assist landowners in restoring their land into grassland habitats was important to the success of the program.

Part 2.3 Restore and Enhance Significant Habitat (Friends of the Mississippi River)

Friends of the Mississippi River restored or enhanced over 226 37-acres of significant habitat. Techniques that were employed to restore and enhance these

areas included: soil preparation (spraying, burning, disking, dragging), seed drilling, mowing, prescribed burning, spot spraying, installation of naïve plants, and removal of invasive species. The activities were focused on the following natural areas:

- Hastings River Flats Park
- Sand Coulee Prairie (City owned property and SNA property)
- Pine Bend Bluffs Natural Area (SNA property)
- Rosemount Wildlife Preserve (City owned property)
- Karpen Site (Private, permanently protected site, easement pending)
- Spring lake Park Reserve
- Empire Wastewater Treatment plant

These sites are all located within a Metro Conservation Corridor. The majority of them are also located within locally developed greenway corridors. As such these sites contribute to both local and state efforts to develop landscape connectivity and improve wildlife habitat. Four of the sites (Sand Coulee, Pine Bend Bluffs, Rosemount Wildlife Preserve, and Karpen) also have associated protection efforts going as well.

Part 2.4 Lower Minnesota River Watershed Restoration & Enhancement Project (Friends of the Minnesota Valley)

Friends of the Minnesota Valley successfully restored 100 acres of significant biological communities and wildlife habitat, including calcareous fens, throughout the Expanded Minnesota River Focus Area within the mapped corridors. The project's main focus included invasive species control and the restoration and enhancement of significant plant communities and wildlife habitats. Friends of the Minnesota Valley worked with local, state, and federal agencies, non-profit organizations and private landowners. Restoration and enhancement activities included the restoration of 5 wetlands totaling 18 acres, 3 acres of which were calcareous fen. In addition, 4 acres of prairie was restored along with 75 acres of forest restoration. Wetlands were restored by constructing shallow earthen dams, blocking drainage tile lines, and installing water control structures. Prairie was restored utilizing native grass and forb species. Forest restoration consisted mainly of exotic species removal, predominantly buckthorn removal.

Part 2.5 Restore and Enhance Significant Habitat (Great River Greening)

Great River Greening's 13 projects in the Metro Corridors priority focus area included restoration of Minnesota County Biological Survey (MCBS)-quality dry prairies, wetlands, oak woodland, large floodplain and hardwood forests, and shoreline. Criteria for projects included ecological significance and partner commitment. In total Great River Greening restored .24 miles of shoreline and 135 acres of high quality natural areas at 13 different sites. At least 1005 volunteers contributed to these restorations. These projects enhanced habitat for at least 11 populations of state-listed species. Greenings restoration projects were:

- Mississippi River shoreline restoration and native planting, Brooklyn Center
- Floodplain forest gap restoration and planting, Crosby Reg. Par, St. Paul

- Floodplain forest and streambank restoration, Cargill Salt, Savage on the Credit and Minnesota Rivers
- Oak savanna restoration, Indian Mounds Regional Park, St. Paul
- Prescribed burn at Pioneer Park, Blaine
- Hill prairie restoration, Hidden Valley Park, Savage
- Mississippi River shoreline revetment and restoration, Coon Rapids
- Prescribed wetland burns, Big Marine Lake, Scandia
- Prescribed burn, prairie remnant, St. Croix Valley recreation trail, Lake St. Croix Beach
- Riparian forest restoration, Meeker Dam/Desnoyer Seep, St. Paul
- Vegetated retention pond with native species, Arcola Mills Historic Foundation, Stillwater
- Oak savanna and prairie reconstruction at Pilot Knob Phase I, Mendota Heights
- “Big Woods” invasives removal and oak planting, Independence

Part 2.6 Habitat Restoration and Enhancement Grants (DNR Metro Greenways)

During this program period, eligible applicants nominated 33 projects and requested over \$9 million dollars to restore or acquire regionally important habitats. An advisory committee rated the project proposals and made funding recommendations that were approved by the DNR Commissioner. Funding was awarded to thirteen projects to restore 376 acres to native plant communities on mostly public land. Many of these projects involved converting cropland to native vegetation, while others worked to remove non-native invasive species such as buckthorn.

Part 2.7 SNA Restoration and Enhancement (DNR Scientific and Natural Area Program)

Ecological restoration and site enhancement were completed on 403 acres at 16 Scientific and Natural Areas in order to prevent the loss of important species, plant communities and features from accidental or willful human disturbance and natural catastrophe. Specifically, woodland restoration (including exotics control and deer exclosure), prairie restoration (including seed harvest, seeding, fire breaks, prescribed burning, and exotics control), and site development (fencing, signs, parking lot gates, trail clearing, and site cleanup) were done at one or more of the following SNAs:

- Black Dog Preserve
- Boot Lake
- Cannon River Turtle preserve
- Falls Creek
- Grey Cloud Dunes
- Hastings Sand Coulee
- Lost Valley Prairie
- Mississippi River Islands
- Pine Bend Bluffs

- River Terrace Prairie
- Savage Fen
- St. Croix Savanna
- Seminary Fen
- Spring Creek Prairie
- Wolsfeld Woods
- Wood Rill

Summary Budget Information for Result 2:	LCMR Budget	\$700,651
	Spent	\$700,336
	Balance	\$315

RESULT 3: ACQUIRE SIGNIFICANT HABITAT

Final Report Summary: Seven partner organizations protected 2,973 acres of regionally significant habitat. This was accomplished through acquisition of conservation easements or fee title by the funded Metro Corridors partners or through grants or funding support to local units of government and/or non-profits who are qualified to own and manage the land.

Part 3.1 Critical Lands Protection Program (The Trust for Public Land)

In its Critical Lands Protection Program, the Trust for Public Land (TPL) secured fee title on a total of 893 acres worth \$2,284,000 and conveyed them to public agencies for permanent protection. Individual successes include the following:

- 174 acres of land in the Twin Lakes habitat complex, including a half mile of shoreline on Horseshoe and Horseleg Lakes, which was conveyed to Isanti County for protection as an Isanti County regional park (Horseshoe Lake)
 - 670 acres of land, including three miles of lakeshore and 450 acres of wetlands, in Chisago County. TPL conveyed the land to the Minnesota department of Natural Resources (DNR) for management and protection as a joint Wildlife and Aquatic management Area (East Rush Lake AMA/WMA)
- 49 acres of land in the St. Croix Valley (Chisago County), which was conveyed to the DNR for management and protection as the Franconia Bluffs Scientific and Natural Area

Part 3.2 Protecting Significant Habitat by Acquiring Conservation Easements (Minnesota Land Trust)

During the second phase of the Metro Corridors project, the Minnesota Land Trust continued to work with landowners throughout the greater metropolitan region to permanently protect lands that are key components of Minnesota's remaining natural areas in the region. Contact was initiated with approximately 30 landowners and 10 perpetual conservation easements were completed. Collectively, these conservation easements protect 526 acres of land and more than 3,910 feet of shoreline. Two easements were purchased, one at a bargain price. The remaining 8 easements were donated. An additional seven easements protecting 298 acres of land in

conservation-oriented residential developments also were completed. These conservation easements (not counting the conservation developments) have a known value that exceeds \$1,690,000, with a known donated value of more than \$1,361,000. The cost to the State of Minnesota under this grant to complete these projects was just over \$800 per acre (other State funds came from the Metro Greenways program to purchase one of the easements).

Additionally, the Minnesota Land Trust prepared baseline property reports for each easement, detailing the condition of the property for future monitoring and enforcement. To fund this required perpetual obligation, the Minnesota Land Trust dedicated funds to its segregated Stewardship and Enforcement Fund.

Part 3.3 Fee Acquisition for Significant Habitat in the Minnesota River Valley (The Minnesota Valley National Wildlife Refuge Trust, Inc.)

The Minnesota Valley National Wildlife Refuge Trust, Inc. completed fee title acquisition of approximately 174 acres of significant habitat in the Minnesota River Valley within the County of Sibley. The tract consists of 15 acres of oak savanna, 16 acres of high quality wet prairie, 97 acres of floodplain forest and 46 acres of cropland. The oak savanna is located in the floodplain of the Minnesota River, which is very rare. The oak trees in the floodplain will provide an important seed source for future oak plantings in higher sections of the floodplain. The wet prairie is very high quality with numerous species of plants. This property will provide an important parcel of connecting forest and prairie habitat in the Minnesota River bottoms. It will benefit many species of wildlife including wood ducks, mallards, bald eagles and grassland nesting birds as well as numerous resident game species such as turkeys and deer.. The tract also contains numerous oxbow wetlands. The land will be donated to the U S Fish and Wildlife Service for management by the Minnesota Valley National Wildlife Refuge.

Part 3.4 Grants to Acquire Significant Habitat (DNR Metro Greenways)

During this program period, eligible applicants nominated 33 projects and requested over \$9 million dollars to restore or acquire regionally important habitats. An advisory committee rated the project proposals and made funding recommendations that were approved by the DNR Commissioner. In addition to the restoration projects described earlier, grants were awarded for six acquisition projects that protected a total of 1,125 acres. Three conservation easements were acquired – two provide a buffer for Wild River State Park and the third buffers the Carlos Avery Wildlife Management Area. Elk River purchased a high quality oak forest to add land to a city park and greenway corridor. Finally, a parcel with high quality mixed hardwoods, wetland and lakeshore was purchased in conjunction with the establishment of East Rush Lake Wildlife Management Area established in Chisago County. Metro Greenways funded approximately one-third of the total cost of the acquisition projects, which totaled over \$3.8 million dollars.

Part 3.5 DNR Fish and Wildlife Acquisition & Development (DNR Division of Fish and Wildlife)

This project resulted in fee title acquisition of two additional parcels on the Vermillion River in Dakota County, a parcel on Rush Lake in Washington County, and a parcel on Brown's Creek in Washington County. Totals for the four acquisitions equal 135.2 acres, including 1.42 total miles of shoreline. One of the parcels on the Vermillion River was also paid for with Phase III acquisition dollars, resulting in both acres and miles being divided proportionately between the two phases. Also as part of this project, \$25,000 was used for site clean-up, access, parking areas, and gates on parcels acquired during Phase I.

Part 3.6 Acquisition of Significant Habitat (DNR Scientific and Natural Area Program)

Two sites of high biodiversity significance in Dakota County were acquired in part through this funding as designated Scientific and Natural Areas. First, in cooperation with the Trust for Public Land and the Dakota County Farmland and Natural Area Program, an addition to the Pine Bend Bluffs SNA totaling 31.73 acres was acquired. It protects a quarter mile of Mississippi River shoreline and bluffs including a grove of old growth white pine. Second, in cooperation with Dakota County Farmland and Natural Area Program and Friends of the Mississippi River, the new Hastings Sand Coulee SNA was created through acquisition of 76.66 acres. It is part of the largest sand gravel prairie remaining in the county and contains 13 rare species of animals and plants.

Part 3.7 Forest Legacy Conservation Easement Acquisition (DNR Division of Forestry)

This appropriation contributed towards the same project as the 2003 Metro Corridors Forest Legacy project. In total, a 42.5-acre conservation easement acquired through this project protects the 55 acre environmentally and historically significant Arcola Mills site (May Township, Washington County). Acquisition of the conservation easement assures that none of the site's significant natural resources will be lost to development and provided funds to the Arcola Mills Historic Foundation to enhance resource interpretation and conservation at the site.

Summary Budget Information for Result 3:	LCMR Budget	\$2,669,349
	Spent	\$2,669,319
	Balance	\$30

TOTAL LCMR PROJECT BUDGET:

All Results: Personnel:	\$ 281,539
All Results: Equipment:	\$ 12,300
All Results: Development:	\$ 541,756

All Results: Acquisition:	\$2,588,419	
All Results:Other:	\$ 59,636	– this is comprised of:
		• land stewardship: \$115,000
		• printing: \$3,000
		• mapping & event supplies: \$6,900
		• travel: \$3,900
All Results: Contracts:	\$ 46,005	
Balance:	\$ 345	

TOTAL LCMR PROJECT BUDGET: \$3,530,000

Explanation of Capital Expenditures Greater Than \$3,500: See the individual partner work programs.

V. OTHER FUNDS & PARTNERS:

A. Project Partners: (See Table 1)

B. Other Funds being Spent during the Project Period: (See individual partner work programs.)

C. Required Match (if applicable): NA

D. Past Spending: LCMR project appropriations only - **2003:** Metro Wildlife Corridors: \$4.85M; **2001:** Great River Greening: \$910K, Metro Greenways: \$2.73M, DNR SNA: \$264K, DNR Fisheries: \$2M; **1999:** Big Rivers Partnership (incl GRG): \$800K

E. Time: 3 years, until June 30, 2008.

VI. DISSEMINATION: Metro Corridors will periodically distribute information about the program through the widely broadcasted emails to people on the Regional Greenways Collaborative (RGC) database, through the RGC quarterly meetings, and jointly held county meetings. As projects are completed, the partners involved will publicize accomplishments through press releases and organization newsletters and websites.

VII. REPORTING REQUIREMENTS: Periodic work program progress reports will be submitted not later than February 15th and August 15th each year, starting with February 15th, 2006. A final work program report will be submitted by December, 2008.

VIII. RESEARCH PROJECTS: NA

2005 McCC Projects	Partners	Budget								
		Revised Allocation (\$)	Spent (\$)	Balance (\$)	Personnel	Contracts	Acq.	Dev./Rest	Equip	Other*
1.1. Develop/coordinate MeC program	DNR - Central Reg Operations	\$ 160,000	\$ 160,000	\$ -	\$160,000					
2.1. Wetland Restoration & Enhancement	Ducks Unlimited (DU)	\$ 200,000	\$ 200,000	\$ -				\$200,000		
2.2. Grassland Enhance. & Resto. Initiative	Pheasants Forever (PF)	\$ 50,000	\$ 50,000	\$ -	\$1,995	\$46,005			\$2,000	
2.3. Restore & enh. sign. wtrshd habitat	Friends of the Mississippi (FMR)	\$ 90,000	\$ 89,685	\$ 315	\$18,025			\$71,224		\$436
2.4. Lower Mn R. Wtrshd Resto/Enhance.	Friend of the Minnesota Valley (FMV)	\$ 40,000	\$ 40,000	\$ -	\$5,000			\$35,000		
2.5. Restore/ enhance significant habitat	Great River Greening (GRG)	\$ 100,000	\$ 100,000	\$ -	\$33,500			\$47,500	\$10,300	\$8,700
2.6. Habitat resto./enhancement grants.	DNR - Metro Greenways (MG)	\$ 170,651	\$ 170,651	\$ -				\$170,651		
2.7. SNA restoration & enhancement	DNR - Div.of Eco.Services (DNR-Eco)	\$ 50,000	\$ 50,000	\$ -	\$32,619			\$17,381		
3.1. Critical Land Protection Program	The Trust for Public Land (TPL)	\$ 620,000	\$ 620,000	\$ -			\$620,000			
3.2. Protect sign. habitat by acquire CE's	Minnesota Land Trust (MLT)	\$ 230,000	\$ 229,970	\$ 30	\$30,400		\$149,070			\$50,500
3.3. Fee acquisition for Mn Valley NWR	MN Valley NWR Trust, Inc. (MVT)	\$ 230,000	\$ 230,000	\$ -			\$230,000			
3.4. Grants & acquisition of fee & CE's	DNR - Metro Greenways (MG)	\$ 1,029,349	\$ 1,029,349	\$ -			\$1,029,349			
3.5. DNR Fish & Wildlife - Acquisition	DNR - Div.of Fish. & Wildlife (DNR-F&W)	\$ 290,000	\$ 290,000	\$ -			\$290,000			
3.6. SNA Acquisition	Eco.Services (DNR-Eco)	\$ 250,000	\$ 250,000	\$ -			\$250,000			
3.7. Forest Legacy CE Acquisition	DNR - Division of Forestry (DNR-For)	\$ 20,000	\$ 20,000	\$ -			\$20,000			
TOTAL		\$ 3,530,000	\$ 3,529,655	\$ 345	\$281,539	\$46,005	\$2,588,419	\$541,756	\$12,300	\$59,636

* See Individual Work Programs for specific details.

2005 Project Abstract

For the Period Ending June 30, 2008

TITLE: Metropolitan Area Wildlife Corridors – Phase II, Part 2.1:
“Wetland Restoration & Enhancement”

PROJECT MANAGER: Jon Schneider
ORGANIZATION: Ducks Unlimited, Inc.
ADDRESS: 311 East Lake Geneva Road, Alexandria, MN 56308
WEB ADDRESS: www.ducks.org
FUND: Minnesota Environment and Natural Resources Trust Fund
LEGAL CITATION: ML 2005, 1st Special Session, Chap. 1, Art. 2, Sec. 11, Subd. 5b.



APPROPRIATION AMOUNT: \$200,000

Overall Project Outcome and Results

DU enhanced 400-acre Mud Lake on the Carlos Avery WMA in Chisago County. DU provided bio-engineering services to DNR Wildlife Area Management field staff to survey, design and construct a new outlet water control structure and fish barrier. Mud Lake is a 400-acre shallow lake with maximum depths only four or five feet, and a history of growing wild rice and providing quality habitat for waterfowl. Prior to the project, water quality and wildlife habitat value of Mud Lake was poor due to the presence of carp and other invasive fish and stable water levels. The new outlet water control structure designed and installed by DU will allow Minnesota DNR Wildlife field staff to independently manage Mud Lake water levels, while also limiting fish access into the basin from the downstream Sunrise River to the east. The new outlet structure is being used by DNR to temporarily draw-down Mud Lake to winterkill carp and rejuvenate aquatic plants such as wild rice, which will improve both water quality and wildlife habitat value of Mud Lake. DU completed the project at a total cost of \$356,160.32, of which \$200,000 in contractor charges were reimbursed from the Environment and Natural Resources Trust Fund to DU through Minnesota DNR. Of the remaining \$156,160.32 in project costs, \$42,878 was reimbursed to DU by Minnesota DNR Wildlife using state funds, \$70,000 was reimbursed to DU by Minnesota DNR Wildlife using federal NAWCA grant funds, and \$43,282 was funded by DU (total “Other Non-state Funds” = \$113,282). The federal NAWCA funds were leveraged by Minnesota DNR and DU through a grant proposal that offered state DNR and LCCMR funds and private DU funds as non-federal match for the federal grant funds. This shallow lake improvement project helps fulfill the waterfowl habitat goals of DNR’s “Duck Recovery Plan” and DU’s “Living Lakes” conservation initiative.

Project Results, Use, and Dissemination

The results of this bio-engineering project by DU to improve Mud Lake has been helpful in developing and demonstrating water control and fish barrier techniques that can be applied to many other impaired and degraded shallow lakes around the state. Project summaries and pictures of the Mud Lake project funded through this grant will be disseminated through DU and DNR news releases, through articles in DU publications, and on the DU website www.ducks.org.

Date of Report: August 1, 2008
LCCMR Final Work Program Report
Project Completion Date: June 30, 2008

I. PROJECT TITLE: Metropolitan Area Wildlife Corridors – Phase II, Part 2.1:
“Wetland Restoration & Enhancement“

Project Manager: Jon Schneider, Manager – Minnesota Conservation Programs
Affiliation: Ducks Unlimited, Inc.
Mailing Address: 311 East Lake Geneva Road NE
City / State / Zip : Alexandria, MN 56308
Telephone Number: 320/762-9916
E-mail Address: jschneider@ducks.org
FAX Number: 320/759-1567
Web Page address: www.ducks.org



Location: Within MWC Focus Area of Chisago County. See MWC Figure 1.

Total Biennial LCMR Project Budget:	LCMR Appropriation:	\$ 200,000
	Minus Amount Spent:	<u>\$ 200,000</u>
	Equal Balance:	\$ 0

Legal Citation: ML 2005, 1st Special Session, Chap. 1, Art. 2, Sec. 11, Subd. 5b.

Appropriation Language: Metropolitan Area Wildlife Corridors – Phase II. \$1,765,000 the first year and \$1,765,000 the second year are from the trust fund to the commissioner of natural resources for the second biennium for acceleration of agency programs and cooperative agreements with the Trust for Public Land, Ducks Unlimited, Inc., Friends of the Mississippi River, Great River Greening, Minnesota Land Trust, Minnesota Valley National Wildlife Refuge Trust, Inc., Pheasants Forever, Inc. and Friends of the Minnesota Valley for the purposes of planning, improving, and protecting important natural areas in the metropolitan region, as defined by Minnesota Statutes, section 473.121, subdivision 2 and portions of the surrounding counties, through grants, contracted services, conservation easements, and fee acquisition. Land acquired with this appropriation must be sufficiently improved to meet at least minimum management standards as determined by the commissioner of natural resources. Expenditures are limited to the identified project areas as defined in the work program. This appropriation may not be used for the purchase of residential structures, unless expressly approved in the work program. Any land acquired in fee title by the commissioner of natural resources with money from this appropriation must be designated: (1) as an outdoor recreation unit under Minnesota Statutes, section 86A.07; or (2) as provided in Minnesota Statutes, sections 89.018, subdivision 2, paragraph (a); 97A.101; 97A.125; 97C.001; and 97C.011. The commissioner may similarly designate any lands acquired in less than fee title. This appropriation is available until June 30, 2008, at which time the project must be completed and final products delivered, unless an earlier date is specified in the work program.

II. and III. FINAL PROJECT SUMMARY:

DU enhanced 400-acre Mud Lake on the Carlos Avery WMA in Chisago County. DU provided bio-engineering services to DNR Wildlife Area Management field staff to survey, design and construct a new outlet water control structure and fish barrier. Mud Lake is a 400-acre shallow lake with maximum depths only four or five feet, and a history of growing wild rice and providing quality habitat for waterfowl. Prior to the project, water leaving Mud Lake entered the Sunrise River impoundment to the south that is controlled by a large weir structure and which contains carp and other invasive fish. Thus, the Mud Lake basin could not be dewatered to winterkill carp or grow wild rice plants without also dewatering the Sunrise River Impoundment, which seriously degraded the water quality and wildlife habitat value of Mud Lake. The new outlet water control structure designed and installed by DU will allow Minnesota DNR Wildlife field staff to independently manage Mud Lake water levels, while also limiting fish access into the basin from the downstream Sunrise River to the east. The new structure flows water east through a long pipeline directly into the Sunrise River, therefore bypassing the Sunrise River Impoundment to the south. The pipeline was designed and constructed at such an angle that will prohibit fish from being able to swim up the pipe and into Mud Lake, effectively serving as a barrier. Construction of the new structure was completed on April 10, 2008 following several months of late fall and winter construction, and final "as-built" engineering plans were provided to the Minnesota DNR. Carlos Avery WMA field staff subsequently used the new outlet structure to draw-down Mud Lake during the summer of 2008, and the lake will be temporarily held low until all carp and other invasive fish are eliminated. Subsequently, in 2009 or 2010, the new outlet will be closed and water levels in Mud Lake allowed to return to normal, and wild rice is expected to germinate and once again grow throughout the basin. DU completed the project at a total cost of \$356,160.32, of which \$200,000 in contractor charges were reimbursed from the Environment and Natural Resources Trust Fund to DU through Minnesota DNR. Of the remaining \$156,160.32 in project costs, \$42,878 was reimbursed to DU by Minnesota DNR Wildlife using state funds, \$70,000 was reimbursed to DU by Minnesota DNR Wildlife using federal NAWCA grant funds, and \$43,282 was funded by DU (total "Other Non-state Funds" = \$113,282). The federal NAWCA funds were leveraged by Minnesota DNR and DU through a grant proposal that offered state DNR and LCCMR funds and private DU funds as non-federal match for the federal grant funds. This shallow lake improvement project helps fulfill the goals of DNR's "Duck Recovery Plan" and DU's "Living Lakes" conservation initiative.

IV. OUTLINE OF PROJECT RESULTS:

Result 1: Restore and Enhance Significant Habitat – Carlos Avery WMA

Description: DU professional bio-engineers designed and managed the construction of a fish barrier and outlet structure/channel from Mud Lake to the Sunrise River to improve water level management capability for DNR wildlife managers so they can increase the productivity of this 400-acre emergent wetland for migratory birds. Final "as-built" DU engineering plans for the project were provided to the Minnesota DNR.

Summary Budget Information for Result 1:	LCMR Budget	\$200,000
	Spent to Date	\$200,000
	Balance	\$ 0

Completion Date: June 30, 2008

Result Status as of June 30, 2008: The 400- acre Mud Lake water control structure and fish barrier project on Carlos Avery WMA was designed and construction by DU as planned. Final project inspection was April 10, 2008. Total project cost was \$356,160, of which \$200,000 was reimbursed by this LCCMR grant.

Final Report Summary:

V. TOTAL LCMR PROJECT BUDGET:

All Results: Personnel:	\$ 0
All Results: Equipment:	\$ 0
All Results: Development:	\$200,000
All Results: Acquisition:	\$ 0
All Results: Other:	\$ 0
TOTAL LCMR PROJECT BUDGET:	\$200,000

Explanation of Capital Expenditures Greater Than \$3,500: None

VI. OTHER FUNDS & PARTNERS:

A. Project Partners: All project design work was cost-shared by DNR Wildlife and included \$70,000 from the federal North American Wetlands Conservation Council.

B. Other Funds Spent during the Project Period: DU spent \$156,160 in Other Funds, including \$42,878 in other state funds and \$113,282 in other non-state funds (federal grant funds and private DU funds) on the project.

C. Required Match (if applicable): N/A

D. Past Spending: Approximately \$20,610 of in-kind bio-engineering staff time and travel expense was incurred by DU on this project prior to July 2005.

E. Time: 3 years, through June 30, 2008.

VII. DISSEMINATION: Metro Corridors periodically distributed information about the program through the widely broadcasted emails to people on the Regional Greenways Collaborative (RGC) database, through the RGC quarterly meetings, and jointly held county meetings. As the Mud Lake project on Carlos Avery WMA shows improvement in 2008 and 2009 following water level management with the new outlet structure, DU and DNR will both issue news releases about the success of the project and DU will post articles on the DU webpage (www.ducks.org).

VIII. REPORTING REQUIREMENTS: Periodic work program progress reports were submitted not later than February 1st and August 1st each year, starting with February 1st, 2006. This document constitutes the final work program report..

IX. RESEARCH PROJECTS: N/A

Attachment A: Budget Detail for 2005 Proposal
METRO WILDLIFE CORRIDORS - PHASE II

Date: July 31, 2008
FINAL REPORT

LCMR Requested Dollars: \$ 200,000

2005 LCMR Pre-Proposal Budget & Accomplishments	<u>Result 2 Budget:-</u>	Amount Spent as of	Balance as of
	<u>Restore Significant Habitat</u>	(6/30/2008)	(6/30/2008)
2.1 Wetland Restoration & Enhancement: Mud Lake, Carlos Avery Wildlife Management Area			
Ducks Unlimited			
BUDGET ITEM			
PERSONNEL (A)			
Staff expenses, wages, salaries, & benefits		\$ -	\$0
EQUIPMENT			
Equipment / Tools (B)			\$ -
Other Capital equipment (C)			\$ -
EQUIPMENT - SUBTOTAL	\$ -	\$ -	\$ -
DEVELOPMENT			
Contracts (D)	\$200,000	\$ 200,000	\$ -
Other land improvement (E)			\$ -
Supplies (F)			\$ -
DEVELOPMENT - SUBTOTAL	\$ 200,000	\$ 200,000	\$ -
ACQUISITION			
Land acquisition (<i>fee title & conservation easement</i>)			\$ -
Land transaction costs (<i>e.g. survey, title, appraisal, environmental, & legal</i>)			\$ -
ACQUISITION - SUBTOTAL	\$ -	\$ -	\$ -
Land stewardship			\$ -
Printing			\$ -
Other Supplies (mapping & workshop supplies)			\$ -
Travel expenses in Minnesota			\$ -
Other (G)			\$ -
OTHER - SUBTOTAL	\$ -	\$ -	\$ -
TOTAL LCMR Funding	\$ 200,000	\$ 200,000	\$ -
Other State Funding (MN DNR Wildlife)	\$ -	\$42,878	\$ (42,878)
Other Non-state Funding (DU & NAWCA)	\$ 50,000	\$ 113,282	\$ (63,282)
TOTAL PROJECT FUNDING	\$ 250,000	\$ 356,160	\$ (106,160)
Proposed LCMR Accomplishments (acres)	230	225	5
Proposed Other (other state and non-state funded) Accomplishments (acres)	170	175	(5)
PROPOSED TOTAL ACCOMPLISHMENTS (in acres)	400	400	0

Comments:

- (A) Personnel - [FTE & name for each position to be funded]
- (B) Equipment/Tools: [specify - subject to LCMR OK]
- (C) Other Capital Equipment [specify - subject to LCMR OK]
- (D) Contracts:
- (E) Other Land:
- (F) Supplies:

2005 Project Abstract

For the Period Ending June 30, 2008

PROJECT TITLE: Metropolitan Area Wildlife Corridors – Phase II: 2.2 - Grassland Enhancement and Restoration Initiative

PROJECT MANAGER: Matt Holland

AFFILIATION: Pheasants Forever

MAILING ADDRESS: 679 West River Drive

CITY/STATE/ZIP: New London, MN 56273

PHONE: 320-354-4377

FAX: 320-354-4377

E-MAIL: mholland@pheasantsforever.org

WEBSITE: www.pheasantsforever.org

FUNDING SOURCE: Minnesota Environment & Natural Resources Trust Fund

LEGAL CITATION: ML 2005, 1st Spec. Sess., Chap. 1, Art. 2, Sec. 11, Subd. 5b.

APPROPRIATION AMOUNT: \$50,000

Overall Project Outcome and Results

Twenty-seven projects totaling 386.1 acres were completed as a result of the Grassland Enhancement & Restoration Initiative which expended \$46,004.59 in ETF funds and \$14,170.73 in matching funds to complete. In addition, a MN Wanner ATV pump sprayer was purchased on 02/15/06 using \$2,000 in grant and \$1,105 in partner funding. This equipment improves the safety of personnel and volunteers and improves the ability to conduct prescription burns on wet or rugged terrain. Personnel to administer and coordinate the restoration of grassland habitats totaled \$1,995.41 of ETF Funds and \$344.79 in matching funds. Restoration of grasslands within the Metro Area Wildlife Corridors Project is important to the conservation of soil, water, wildlife, and quality of life (open space) in the metropolitan area. Working hand in hand with landowners interested in restoring and managing grasslands is vital to future of conservation efforts in Minnesota. Many local partners in addition to the landowners were involved including the local USDA office staff and several SWCD's. The support provided to assist landowners in restoring their land into grassland habitats was important to the success of the program.

Project Results Use and Dissemination

This project was promoted to landowners through the local Soil and Water Conservation Districts who have established relationships with landowners and access to USDA conservation programs that assist Minnesota landowners who wish to restore habitat on their farmlands. The results of this and all Metro Area Wildlife Corridors projects can be seen on the land and promoted by the partnership and in conjunction with the LCCMR and participating partner organizations and agencies.

LCCMR 2005 Work Program Final Report

Date of Report: August 8, 2008

LCCMR 2005 Work Program Final Report

I. PROJECT TITLE: Metropolitan Area Wildlife Corridors – Phase II: 2.2
Grassland Enhancement and Restoration Initiative

Project Manager: Matt Holland
Affiliation: Pheasants Forever
Mailing Address: 679 W River Dr
City / State / Zip : New London, MN 56273
Telephone Number: (320) 354-4377
E-mail Address: mholland@pheasantsforever.org
FAX Number: (320) 354-4377
Web Page address: www.minnesotapf.org; www.pheasantsforever.org

Location: Within mapped Focus Area and within the counties of Carver, Dakota, Goodhue, LeSueur, Nicollet, Rice, Scott, Chisago, Isanti and Sibley.

Total Biennial LCMR Project Budget:	LCMR Appropriation:	\$50,000
	Minus Amount Spent:	\$50,000
	Equal Balance:	\$ - 0 -

Legal Citation: ML 2005, 1st Spec. Sess., Chap. 1, Art. 2, Sec. 11, Subd. 5b.

Appropriation Language: Metropolitan Area Wildlife Corridors – Phase II. \$1,765,000 the first year and \$1,765,000 the second year are from the trust fund to the commissioner of natural resources for the second biennium for acceleration of agency programs and cooperative agreements with the Trust for Public Land, Ducks Unlimited, Inc., Friends of the Mississippi River, Great River Greening, Minnesota Land Trust, Minnesota Valley National Wildlife Refuge Trust, Inc., Pheasants Forever, Inc. and Friends of the Minnesota Valley for the purposes of planning, improving, and protecting important natural areas in the metropolitan region, as defined by Minnesota Statutes, section 473.121, subdivision 2 and portions of the surrounding counties, through grants, contracted services, conservation easements, and fee acquisition. Land acquired with this appropriation must be sufficiently improved to meet at least minimum management standards as determined by the commissioner of natural resources. Expenditures are limited to the identified project areas as defined in the work program. This appropriation may not be used for the purchase of residential structures, unless expressly approved in the work program. Any land acquired in fee title by the commissioner of natural resources with money from this appropriation must be designated: (1) as an outdoor recreation unit under Minnesota Statutes, section 86A.07; or (2) as provided in Minnesota Statutes, sections 89.018, subdivision 2, paragraph (a); 97A.101; 97A.125; 97C.001; and 97C.011. The commissioner may similarly designate any lands acquired in less than fee title. This appropriation is available until June 30, 2008, at which time the project

must be completed and final products delivered, unless an earlier date is specified in the work program.

II & III FINAL PROJECT SUMMARY:

Twenty-seven projects totaling 386.1 acres were completed as a result of the Grassland Enhancement & Restoration Initiative which expended \$46,004.59 in ETF funds and \$14,170.73 in matching funds to complete. In addition, a MN Wanner ATV pump sprayer was purchased on 02/15/06 using \$2,000 in grant and \$1,105 in partner funding. This equipment improves the safety of personnel and volunteers and improves the ability to conduct prescription burns on wet or rugged terrain. Personnel to administer and coordinate the restoration of grassland habitats totaled \$1,995.41 of ETF Funds and \$344.79 in matching funds. Restoration of grasslands within the Metro Area Wildlife Corridors Project is important to the conservation of soil, water, wildlife, and quality of life (open space) in the metropolitan area. Working hand in hand with landowners interested in restoring and managing grasslands is vital to future of conservation efforts in Minnesota. Many local partners in addition to the landowners were involved including the local USDA office staff and several SWCD's. The support provided to assist landowners in restoring their land into grassland habitats was important to the success of the program.

IV. OUTLINE OF PROJECT RESULTS:

Result 1: Grassland Development

Summary Budget Information for Result 1:	LCMR Budget	\$ 46,004.59
	Expended	\$ 46,004.59
	Balance*	\$ - 0 -

*\$1,004.59 from original proposed amount came from result 3

Final Report Summary: Pheasants Forever and cooperating landowners and partners completed 385.6 total acres of grassland restoration through this initiative. Pheasants Forever expended \$46,004.59 in ETF funds and \$15,275.73 of matching funds.

Result 2: Purchase Prescription Burning Equipment

Summary Budget Information for Result 1:	LCCMR Budget	\$ 2,000
	LCCMR Expended	\$ 2,000
	Balance	\$ - 0 -

Final Report Summary: A MN Wanner ATV pump sprayer was purchased on 02/15/06 using \$2,000 in grant and \$1,105 in partner funding.

Result 3: Personnel – Administer program

Description: Pheasants Forever staff administered and coordinated the program. Only time spent directly on administration or coordination is claimed.

Summary Budget Information for Result 1:	LCCMR Budget	\$ 1,995.41
	LCCMR Expended	\$ 1,995.41
	Balance*	\$ - 0 -

*Balance from original proposed amount (\$1004.59) spent in result 1.

Final Report Summary: PF expended \$1,995.41 to administer and coordinate the work found within this proposal. \$1,004.59 of the originally proposed funds for this result were expended under result 1 to get more resource restoration completed.

TOTAL LCMR PROJECT BUDGET:

All Results: Personnel: \$1,995.41

All Results: Equipment: \$2,000

All Results: Development: \$46,004.59

TOTAL LCMR PROJECT BUDGET: \$50,000

Explanation of Capital Expenditures Greater Than \$3,500: N/A

V. OTHER FUNDS & PARTNERS:

A. Project Partners: See Table 1.

B. Other Funds being Spent during the Project Period: \$15,275.73 in matching contributions were made for results 1 & 2 from PF and other partners including landowners participating in the program. PF contributed an additional \$344.79 in personnel expense towards the project.

C. Required Match (if applicable): NA

D. Past Spending: Local Pheasants Forever chapters have spent funding on various small grassland restoration and enhancement projects within the area. However, no organized program has been completed.

E. Time: Grant ended June 30, 2008.

VII. DISSEMINATION: Metro Corridors will periodically distribute information about the program through the widely broadcasted emails to people on the Regional Greenways Collaborative (RGC) database, through the RGC quarterly meetings, and jointly held county meetings. As projects are completed, Pheasants Forever will announce accomplishments through local press releases and on the Minnesota PF web site.

VIII. REPORTING REQUIREMENTS: Final Report is dated August 8, 2008. The delay is due to funding cycle and coordination with SWCD and USDA billing cycles. Additionally, we had a project officer change which added complexity to completing the final report.

IX. RESEARCH PROJECTS: NA

Attachment A: Budget Detail for 2005 Metro Corridors Project

date: 8/8/2008

Project Title: 2.2 Grassland Enhancement and Restoration Initiative

FINAL ATTACHEMENT A

Project Manager Name: Matt Holland

LCMR Requested Dollars: \$ 50,000

BUDGET ITEM	Amount Budgeted (\$)	Amount Spent (\$)	Balance (\$)	Comments
PERSONNEL				
Staff expenses, wages, salaries, & benefits	\$ 3,000.00	\$ 1,995.41	\$ 1,004.59	[.03 FTE Project Manager (Aaron Kuehl); .02 FTE - accounting / reimbursments (Ron Leathers / Alan Ferguson)]
EQUIPMENT				
Equipment / Tools	\$ 2,000.00	\$ 2,000.00	\$ -	[burning equipment - ATV Water Rig or misc safety equipment - radios, backback sprayers]
EQUIPMENT - SUBTOTAL	\$ 2,000.00	\$ 2,000.00	\$ -	
DEVELOPMENT				
Contracts	\$ 45,000.00	\$ 46,004.59	\$ (1,004.59)	[enhance / restore 120 ac native grasslands - establishment, interseeding, burning, discing, woody cover removal. Work contracted with PF habitat team, chapters or other private contractors]
DEVELOPMENT - SUBTOTAL	\$ 45,000.00	\$ 46,004.59	\$ (1,004.59)	
TOTAL LCMR Funding	\$ 50,000.00	\$ 50,000.00	\$ 0.00	

Legislative-Citizen Commission on Minnesota Resources

2005 Project Abstract
For the Period Ending June 30, 2008

PROJECT TITLE: Metropolitan Area Wildlife Corridors – Phase II: Friends of the Mississippi River 2.3

Project Manager: Tom Lewanski.

Affiliation: Friends of the Mississippi River

Mailing Address: 360 North Robert Street, Suite 400

City / State / Zip : Saint Paul, Minnesota 55101

Telephone Number: 651-222-2193 Ext. 12

E-mail Address: tlewanski@fmr.org

FAX Number: 651-222-6005

Web Page address: www.fmr.org

Legal Citation: ML 2005, 1st Spec. Sess., [Chap.1], Art. 2, Sec.[11], Subd.5(b).

Appropriation Amount: \$90,000

Overall Project Outcome and Results

Friends of the Mississippi River (FMR) had one result in this project: To restore and enhance significant habitat.

Objective: In our proposal and final work program, FMR committed to restore and/or enhance 45 acres of significant habitat using MWC II funding and an additional 12 acres of significant habitat using other funding for a total of 57 acres, which may include prairie, oak savanna, and deciduous forest and/or wetland communities.

Results: At the conclusion of the Phase II (2005 appropriation), FMR has restored or enhanced 137-acres of significant habitat using funds provided by the Environment and Natural Resources Trust Fund (ENRTF). Furthermore, The ENRTF funding allowed FMR to leverage \$82,950 in other state and non state funding that resulted in an additional 89 acres being restored or enhanced, for a total of over 226-acres restored or enhanced during Phase II (2005 appropriation) of the MeCC.

Techniques that were employed to restore and enhance these areas included: soil preparation (spraying, burning, disking, dragging), seed drilling, mowing, prescribed burning, spot spraying, installation of native plants, and removal of invasive plant species.

During Phase II, FMR focused its restoration and enhancement activities at the following natural areas:

- Hastings River Flats Park
- Sand Coulee Prairie (City owned property and SNA property)
- Pine Bend Bluffs Natural Area (SNA property)
- Rosemount Wildlife Preserve (City owned property)
- Karpen Site (Private, permanently protected site, easement pending)
- Spring Lake Park Reserve
- Empire Wastewater Treatment plant

These sites are all located within a Metro Conservation Corridor. The majority of them are also located within locally developed greenway corridors. As such these sites contribute to both local and state efforts to develop landscape connectivity and improve wildlife habitat. Four of the sites (Sand Coulee, Pine Bend Bluffs, Rosemount Wildlife Preserve, and Karpen) also have associated protection efforts going as well.

Project Results Use and Dissemination

FMR has disseminated information about this project in a number of ways.

1. We have worked with reporters on newspaper stories about our specific projects.
2. We have published stories in our newsletters about our specific projects.
3. When we organize volunteer restoration events, we discuss our partners including MeCC and LCCMR.

LCMR 2005 Work Program Final Report

Date of Report: June 30, 2008.

LCCMR 2005 Work Program Final Report

I. PROJECT TITLE: Metropolitan Area Wildlife Corridors – Phase II: Friends of the Mississippi River 2.3

Project Manager: Tom Lewanski.

Affiliation: Friends of the Mississippi River

Mailing Address: 360 North Robert Street, Suite 400

City / State / Zip: Saint Paul, Minnesota 55101

Telephone Number: 651-222-2193 Ext. 12

E-mail Address: tlewanski@fmr.org

FAX Number: 651-222-6005

Web Page address: www.fmr.org

Location: Within mapped Focus Areas and within the counties of Anoka, Dakota, Goodhue, Hennepin, Ramsey, and Washington. See Figure 1.

Total Biennial LCMR Project Budget:	LCMR Appropriation:	\$ 90,000
	Minus Amount Spent:	\$ 89,685.41
	Equal Balance:	\$ 314.59

Legal Citation: ML 2005, 1st Spec. Sess., [Chap.1], Art. 2, Sec.[11], Subd.5(b).

Appropriation Language: Metropolitan Area Wildlife Corridors – Phase II. \$1,765,000 the first year and \$1,765,000 the second year are from the trust fund to the commissioner of natural resources for the second biennium for acceleration of agency programs and cooperative agreements with the Trust for Public Land, Ducks Unlimited, Inc., Friends of the Mississippi River, Great River Greening, Minnesota Land Trust, Minnesota Valley National Wildlife Refuge Trust, Inc., Pheasants Forever, Inc. and Friends of the Minnesota Valley for the purposes of planning, improving, and protecting important natural areas in the metropolitan region, as defined by Minnesota Statutes, section 473.121, subdivision 2 and portions of the surrounding counties, through grants, contracted services, conservation easements, and fee acquisition. Land acquired with this appropriation must be sufficiently improved to meet at least minimum management standards as determined by the commissioner of natural resources. Expenditures are limited to the identified project areas as defined in the work program. This appropriation may not be used for the purchase of residential structures, unless expressly approved in the work program. Any land acquired in fee title by the commissioner of natural resources with money from this appropriation must be designated: (1) as an outdoor recreation unit under

Minnesota Statutes, section 86A.07; or (2) as provided in Minnesota Statutes, sections 89.018, subdivision 2, paragraph (a); 97A.101; 97A.125; 97C.001; and 97C.011. The commissioner may similarly designate any lands acquired in less than fee title. This appropriation is available until June 30, 2008, at which time the project must be completed and final products delivered, unless an earlier date is specified in the work program.

II. and III. Final Project Summary

Friends of the Mississippi River (FMR) had one result in this project: To restore and enhance significant habitat.

Objective: In our proposal and final work program, FMR committed to restore and/or enhance 45 acres of significant habitat using MWC II funding and an additional 12 acres of significant habitat using other funding for a total of 57 acres, which may include prairie, oak savanna, and deciduous forest and/or wetland communities.

Results: At the conclusion of the Phase II (2005 appropriation), FMR has restored or enhanced 137-acres of significant habitat using funds provided by the Environment and Natural Resources Trust Fund (ENRTF). Furthermore, The ENRTF funding allowed FMR to leverage \$82,950 in other state and non state funding that resulted in an additional 89 acres being restored or enhanced, for a total of over 226-acres restored or enhanced during Phase II (2005 appropriation) of the MeCC.

Techniques that were employed to restore and enhance these areas included: soil preparation (spraying, burning, disking, dragging), seed drilling, mowing, prescribed burning, spot spraying, installation of native plants, and removal of invasive plant species.

During Phase II, FMR focused its restoration and enhancement activities at the following natural areas:

- Hastings River Flats Park
- Sand Coulee Prairie (City owned property and SNA property)
- Pine Bend Bluffs Natural Area (SNA property)
- Rosemount Wildlife Preserve (City owned property)
- Karpen Site (Private, permanently protected site, easement pending)
- Spring Lake Park Reserve
- Empire Wastewater Treatment plant

These sites are all located within a Metro Conservation Corridor. The majority of them are also located within locally developed greenway corridors. As such these sites contribute to both local and state efforts to develop landscape connectivity and improve wildlife habitat. Four of the sites (Sand Coulee, Pine Bend Bluffs,

Rosemount Wildlife Preserve, and Karpen) also have associated protection efforts going as well.

IV. OUTLINE OF PROJECT RESULTS:

Result 1: Restore and/or enhance 45 acres of significant habitat.

The information below provides details on the restoration and enhancement projects and activities that FMR conducted during the time frame of this grant with Trust Fund and other funding. It should be noted that the Metro Conservation Corridors restoration activities and the investment of Trust Funds have resulted in greater impacts than the MeCC could have accomplished alone. MeCC projects have served as a catalyst for additional restoration activities in the vicinity of the projects funded by the Trust Fund.

Hastings Riverflats. On June 8 2006, a volunteer wetland planting event was held. Volunteers installed numerous wetland plants (vegetated mats) along the shore of the lake and many tree seedlings were removed from a prairie planting.

The 32-acre prairie restoration at the park was in its fourth growing season in 2007. The 2007 growing season reflected a positive response to the burn that was completed in fall 2006, with vigorous growth of the native prairie species and much reduced cover of weedy and invasive species. On-going management in spring 2007 consisted of herbicide control of exotic species such as purple loosestrife, reed canary grass, clovers, and thistle.

Weed control was conducted over a 4-acre area at the Hastings Riverflats park, where previous prairie restoration took place.

Total allocated acreage: MeCC – 5 acres, other funding – 8 acres.

Rosemount Wildlife Preserve. A contractor was hired in late winter 2006, to remove buckthorn. This work included herbicide treatment of the stumps (MeCC funding - 2 acres).

During the spring of 2006, a contractor was hired to overspray a planted prairie at the same site. This installed prairie was suffering from an overabundance of red clover, which threatened the viability of the prairie. The applied herbicide greatly reduced the clover cover. A prescribed burn was also conducted at the site.

Prairie and woodland restoration continued in 2007. A planting event was held on April 28, 2007 to install 216 trees and shrubs. About 35 volunteers installed the plants, plus mulch and fencing, and watered them. MeCC funds were used to purchase all the plant material, mulch and fencing.

In 2007, a prescribed burn was completed on approximately 16 acres of woodland within the Preserve.

Total allocated acreage: MeCC – 8 acres, other funding – 27.5 acres.

Sand Coulee near Hastings. A contractor was hired to remove invasive exotic woody plant material from an 8-acre woodland that is adjacent to an existing high quality prairie. (MeCC funding – 8 acres. Other state funding: 3 acres)

A prescribed burn was completed on a 25-acre portion of the sand coulee in Hastings where FMR has been conducting on-going management and maintenance of the high quality dry prairie. Wetland plants were also purchased for installation at a stormwater pond in the coulee. The plants were installed by a group of volunteers during the spring of 2007 (MeCC funding – 25 acres).

During the fall of 2007, buckthorn removal took place over a 30-acre area of prairie and associated woodlands (1.5 acres with MeCC funding and 28.47 acres with non-state matching funds).

During the winter of 2008, FMR hired a contractor to remove cedar and elm as well as buckthorn and honeysuckle from a 2-acre portion of the prairie that the City of Hastings owns in the Sand Coulee. During this timeframe FMR also cut and treated buckthorn and cut red cedars from 3-acres on the SNA portion of the prairie (MeCC funding – 5 acres).

Total allocated acreage: MeCC – 34.5 acres, other funding – 31.5 acres.

Pine Bend Bluffs. A contractor was hired to over-spray herbicide on 8-acres to address resprouting buckthorn that had been previously removed. A 2-acre prairie restoration was in its second growing season in 2007. Project tasks during 2007 consisted of mowing as part of the standard procedure for second year prairie establishment. An additional 15-ac area was also prepared for planting in the fall. This preparation included removing brush and old stumps.

The 15-acre site, within the SNA was seeded in the fall of 2007. Follow up weed control was also done.

FMR hired a contractor to remove woody exotic plants from a 6-acre section of the Pine Bend Bluffs SNA. During the winter of 2008, FMR cut and treated buckthorn and honeysuckle from bluff prairies. Burned piles of buckthorn and honeysuckle removed from prairie.

Total allocated acreage: MeCC – 17 acres, other funding – 12 acres.

Spring Lake Park Reserve. A contractor was hired to remove invasive exotic woody plants from a 60-acre woodland. This woodland is relatively high quality. Exotic invasive plants were sporadic throughout the woodland. We wanted to remove these plants before the problem became a much larger one.

Total allocated acreage: MeCC – 30 acres, other funding – 30 acres.

Empire Wastewater Treatment plant: Seeding and follow up management activities on 3 acres of wetland. Prairie was enhanced by adding forbs to 3 acres. (MeCC funding - <1 acre, other funding – 6 acres).

Karpen Property: In 2007, a volunteer event was held to install 50 bareroot shrubs at this site overlooking the Mississippi River in Hastings. MeCC funds were used to purchase 17 of the shrubs. Buckthorn seedlings were sprayed with herbicide over a 5-acre area and woody plants were removed (5 acres with MeCC funding).

Total allocated acreage: MeCC – 5 acres, other funding – .5 acres.

- Significance of these results. We at FMR feel that we made real, substantial, and meaningful progress at restoring and enhancing the habitat values at each of these locations. A part of the significance of this work, in addition to the improved habitat value, was that these efforts enabled us to raise the level of awareness of these natural areas in the local communities and the LCCMR.
- Final results. At the conclusion of the Phase II (2005 appropriation), FMR has restored or enhanced 100-acres of significant habitat using funds provided by the LCCMR. Furthermore, The Metro Conservation Corridor funding allowed FMR to leverage \$82,950 in other state and non state funding that resulted in an additional 112.5 acres being restored or enhanced, for a total of 212.5-acres restored or enhanced during Phase II (2005 appropriation) of the MeCC.

Summary Budget Information for Result 1:	LCMR Budget	<u>\$90,000.00</u>
	Balance	<u>\$314.59</u>
	Leveraged funds	<u>\$82,950</u>

Completion Date:

- We anticipate that by January 31, 2006 15 acres of significant habitat will be restored and/or enhanced.
- We anticipate that by January 31, 2007 an additional 15 acres of significant habitat will be restored and/or enhanced.
- We anticipate that by June 30, 2008 an additional 15 acres of significant habitat will be restored and/or enhanced, bringing the total acres restored and/or enhanced at the end of the grant period to 45.

V. TOTAL LCMR PROJECT BUDGET:

All Results: Personnel: \$18,276.07
All Results: Equipment: \$ 0
All Results: Development: \$71,223.93
All Results: Acquisition: \$0
All Results: Other: \$(In state travel - \$500.

TOTAL LCMR PROJECT BUDGET: \$90,000

Explanation of Capital Expenditures Greater Than \$3,500:

VI. OTHER FUNDS & PARTNERS:

A. Project Partners: DNR-SNA Program, the City of Hastings, the City of Rosemount, Dakota County Parks, Dakota County Farmland and Natural Area Program, Metropolitan Council

B. Other Funds being Spent during the Project Period: Friends of the Mississippi River - \$30,000; Metropolitan Council-MetroEnvironmental Partnership grant - \$10,038; Dakota County - \$6,830; St. Paul Audubon - \$5,000; City of Hastings/Metro Greenways grant - \$20,000; Minnesota DNR Remediation grant - \$2,000; U.S. Fish and Wildlife Private Stewardship grant - \$9,082.

C. Required Match (if applicable): NA

D. Past Spending: FMR received \$92,000 in Metropolitan Wildlife Corridors Phase I (July 2003 – June, 2006)

E. Time: 3 years, until June 30, 2008.

VII. DISSEMINATION: Metro Corridors will periodically distribute information about the program through the widely broadcasted emails to people on the Regional Greenways Collaborative (RGC) database, through the RGC quarterly meetings, and jointly held county meetings. As projects are completed, FMR will work with local newspapers to get stories published, will include articles in its newsletter, and will publicize them on its website.

The following are examples of published articles about FMR projects that included references to the LCCMR.

- Rosemount Town Pages. October 27, 2006. *65 volunteers participate in savannah restoration work on Flint Hills' property.*
- This Week Newspaper (online edition). 1/13/06. Restoration begins on area woodlands.
- Friends of the Mississippi River newsletter. Spring, 2008. Natural Infrastructure: Connecting the Pieces for a Healthy Habitat.
- Friends of the Mississippi River newsletter. Fall, 2007. FMR Leads Effort to Protect a Portion of the Sand Coulee.

VIII. REPORTING REQUIREMENTS: Periodic work program progress reports will be submitted not later than February 1st and August 1st each year, starting with February 1st, 2006. A final work program report will be submitted by July 1st, 2008.

IX. RESEARCH PROJECTS: NA

Attachment A: Budget Detail -- Directions

Guidelines:

1. The Attachment A should be consistent with the revised Fall 2004 proposal at the new dollar amount.
2. Provide specific information for the following budget categories:
 - Personnel**
 - Equipment**
 - Development**
 - Acquisition**
 - Other**
3. The Commission will not allow office space rental fees or salary payments to officers or directors, this applies to ALL PROPOSALS. See the 2005 Request for Proposal p.10 for Eligible and Ineligible Costs.
4. Be as specific as possible and use as many lines as needed. If the template does not include a category that you need, add it. Similarly, delete budget items that you do not need.
5. Many proposals listed Contracts in the budget information. For Attachment A more specifics are needed: Contracts with whom? To do what? Include Personnel, Equipment, etc. under the contract. If this information is not available, you will need to issue a broadly competitive RFP and say so in Attachment A. You will need to use the standard LCMR agreement format for all subcontracts including project partners who will receive LCMR money, but do not have an LCMR work program. The current agreement form is on the LCMR web site.
6. The only allowable legal fees are for land acquisition and clearing title to land. ~~List these costs under the personnel or contracts budget items.~~ List these costs under the acquisition category – don't split in budget, but list land & transaction costs separately in expenditure reporting.
7. Travel expenses whether in Minnesota or out of the state are subject to the limits in the Commissioners Plan, Chapter 15 at: <http://www.doer.state.mn.us/lab-rel/pdfs/0305/Commissioners%20Plan%202003-5.pdf>. Out of state travel must be explicitly approved in the LCMR work program.
8. Fringe benefits should state the rate applied ~~and estimated dollar amount for health insurance and employer retirement contribution.~~

Attachment A: Budget Detail for 2005 Metro Corridors Project					date: 6/30/08
Project Title: Proposal Title: Metropolitan Area Wildlife Corridors - Phase II: Friends of the Mississippi River 2.3					
Project Manager Name: Tom Lewanski					
LCMR Requested Dollars: \$ 90,000					
BUDGET ITEM					
	Result 1: Restoration				Comments
	Amount Budgeted (\$)	Revised Budget as of April 25, 08*	Amount Spent as of: June 30, 2008 (\$)	Balance (\$)	
PERSONNEL					
Staff expenses, wages, salaries, & benefits	21,280.00	18,276.07	18,025.31	250.76	Conservation Director (landowner liaison, project selection & development, overall project management. .09 annual equivalent FTE) Restoration Ecologist (Specific restoration project selection, design, implementation management. .26 annual equivalent FTE.) Accountant (project accounting, preparation of LCMR invoices. .01 annual equivalent FTE). Benefits are
DEVELOPMENT					
Land improvement	68,220.00	71,223.93	71,223.93	0.00	Soil prep., drilling seed, crew to remove exotic plants, burn crew, plants, herbicide, seed, etc.
OTHER					
Travel expenses in Minnesota	500.00	500.00	436.17	63.83	mileage
TOTAL LCMR Funding	90,000.00	90,000.00	89,685.41	314.59	
* On April 25, 2008 FMR requested a workplan change that sought to reallocate \$3,003.93 from the staff expenses portion of the budget to					

LEGISLATIVE-CITIZEN COMMISSION ON MINNESOTA RESOURCES

2005 Project Abstract

For the Period Ending June 30, 2008

PROJECT TITLE: Metropolitan Area Wildlife Corridors – Phase II: 2.4. Lower Minnesota River Watershed Restoration & Enhancement Project - Friends of the MN Valley

PROJECT MANAGER: Joe Pavelko

AFFILIATION: Friends of the Minnesota Valley

MAILING ADDRESS: 10800 Lyndale Ave. South, Suite 120

CITY/STATE/ZIP: Bloomington, MN 55420-7034

PHONE: 952-881-9075

FAX: 952-881-3174

E-MAIL: jpavelko@friendsofmnvalley.org

WEBSITE: www.friendsofmnvalley.org

FUNDING SOURCE: Minnesota Environment and Natural Resources Trust Fund

LEGAL CITATION: ML 2005, 1st Spec. Sess., Chap. 1, Art. 2, Sec. 11, Subd. 5b.

APPROPRIATION AMOUNT: \$40,000

Overall Project Outcome and Results

The rapidly expanding human population and the resulting pressures placed on the Twin Cities Area's remaining natural lands are intensifying. Investing today in the protection and restoration of these key natural lands is critical. Friends of the Minnesota Valley aimed to restore and enhance 35 acres of significant biological communities and wildlife habitat, including calcareous fens, throughout the Expanded Minnesota River Focus Area. The project's main efforts included invasive species control and the restoration and enhancement of significant plant communities and wildlife habitats.

Friends of the Minnesota Valley working with local, state, and federal agencies, non-profit organizations, and private landowners, leveraged an additional \$13,900 of other non-state funding to successfully restore a total of 100 acres of significant wildlife habitat throughout the Expanded Minnesota River Focus Area within the mapped corridors. Restoration and enhancement activities included the restoration of 5 wetlands totaling 18 acres, 3 acres of which were calcareous fen. In addition, 4 acres of prairie was restored along with 75 acres of forest restoration. Wetlands were restored by constructing shallow earthen dams, blocking drainage tile lines, and installing water control structures. Prairie was restored utilizing native grass and forb species. Forest restoration consisted mainly of exotic species removal, predominantly buckthorn removal.

The restoration work will improve the health of native vegetation, protect fish and wildlife species, increase and protect water quality, and also build upon the strong relationships between government conservation agencies, non-profit organizations, and private land owners.

**LCMR 2005 Work Program Final Report
Work Program Status Report
Metropolitan Area Wildlife Corridors-Phase II:2.4**

Date of Report: August 15, 2008
LCCMR 2005 Work Program Final Report
Date of Work program Approval: June 14, 2005
Project Completion Date: June 30, 2008

I. PROJECT TITLE: Metropolitan Area Wildlife Corridors – Phase II: 2.4. Lower Minnesota River Watershed Restoration & Enhancement Project - Friends of the MN Valley

Project Manager: Joe Pavelko
Affiliation: Friends of the Minnesota Valley
Mailing Address: 10800 Lyndale Ave. South, Suite 120
City / State / Zip : Bloomington, MN 55420-7034
Telephone Number: 952-881-9075
E-mail Address: jpavelko@friendsofminvalley.org
FAX Number: 952-881-3174
Web Page address: www.friendsofminvalley.org

Location: Within mapped Focus Area and within the counties of Carver, Dakota, Hennepin, Le Sueur, Nicollet, Rice, Scott. See Figure 1.

Total Biennial Project Budget:	LCMR Appropriation:	\$ 40,000
	Minus Amount Spent:	\$ 40,000
	Equal Balance:	\$ 0

Legal Citation: ML 2005, 1st Spec. Sess., Chap. 1, Art. 2, Sec. 11, Subd. 5b.

Appropriation Language: Metropolitan Area Wildlife Corridors – Phase II. \$1,765,000 the first year and \$1,765,000 the second year are from the trust fund to the commissioner of natural resources for the second biennium for acceleration of agency programs and cooperative agreements with the Trust for Public Land, Ducks Unlimited, Inc., Friends of the Mississippi River, Great River Greening, Minnesota Land Trust, Minnesota Valley National Wildlife Refuge Trust, Inc., Pheasants Forever, Inc. and Friends of the Minnesota Valley for the purposes of planning, improving, and protecting important natural areas in the metropolitan region, as defined by Minnesota Statutes, section 473.121, subdivision 2 and portions of the surrounding counties, through grants, contracted services, conservation easements, and fee acquisition. Land acquired with this appropriation must be sufficiently improved to meet at least minimum management standards as determined by the commissioner of natural resources. Expenditures are limited to the identified project areas as defined in the work program. This appropriation may not be used for the purchase of residential structures, unless expressly approved in the work program. Any land acquired in fee title by the commissioner of natural resources with money

from this appropriation must be designated: (1) as an outdoor recreation unit under Minnesota Statutes, section 86A.07; or (2) as provided in Minnesota Statutes, sections 89.018, subdivision 2, paragraph (a); 97A.101; 97A.125; 97C.001; and 97C.011. The commissioner may similarly designate any lands acquired in less than fee title. This appropriation is available until June 30, 2008, at which time the project must be completed and final products delivered, unless an earlier date is specified in the work program.

II. and III. FINAL PROJECT SUMMARY:

The rapidly expanding human population and the resulting pressures placed on the Twin Cities Area's remaining natural lands are intensifying. Investing today in the protection and restoration of these key natural lands is critical.

Friends of the Minnesota Valley aimed to restore and enhance 35 acres of significant biological communities and wildlife habitat, including calcareous fens, throughout the Expanded Minnesota River Focus Area. The project's main efforts included invasive species control and the restoration and enhancement of significant plant communities and wildlife habitats.

Friends of the Minnesota Valley working with local, state, and federal agencies, non-profit organizations, and private landowners, leveraged an additional \$13,900 of other non-state funding to successfully restore a total of 100 acres of significant wildlife habitat throughout the Expanded Minnesota River Focus Area within the mapped corridors. Restoration and enhancement activities included the restoration of 5 wetlands totaling 18 acres, 3 acres of which were calcareous fen. In addition, 4 acres of prairie was restored along with 75 acres of forest restoration. Wetlands were restored by constructing shallow earthen dams, blocking drainage tile lines, and installing water control structures. Prairie was restored utilizing native grass and forb species. Forest restoration consisted mainly of exotic species removal, predominantly buckthorn removal.

The restoration work will improve the health of native vegetation, fish and wildlife species, increase and protect water quality, and also build upon the strong relationships between government conservation agencies, non-profit organizations, and private land owners.

IV. OUTLINE OF PROJECT RESULTS

Result 2: Restore and Enhance Significant Habitat

Description: With MWC funding, the Friends of the Minnesota Valley will restore and enhance 35 acres of regionally significant habitat (plus another 5 acres through leveraged funds for a total of 40 acres). Friends of the Minnesota Valley and its partners will take steps to control invasive species and restore and enhance native

V. TOTAL LCMR PROJECT BUDGET:

All Results: Personnel: \$5,000
All Results: Equipment: \$ 0
All Results: Development: \$35,000
All Results: Acquisition: \$0
All Results: Other: \$ 0

TOTAL LCMR PROJECT BUDGET: \$40,000

Explanation of Capital Expenditures Greater Than \$3,500: No capital expenditures.

VI. OTHER FUNDS & PARTNERS:

A. Project Partners: See Table 1.

B. Other Funds being spent during the Project Period: Friends of the Minnesota Valley will be spending an additional \$5,000 on the project with funds coming from our Watershed Initiative Program funded by private foundation dollars.

C. Required Match (if applicable): NA

D. Past Spending: \$40,000 has been spent on this project and all funds have been reimbursed.

E. Time: 3 years, until June 30, 2008.

VII. DISSEMINATION: Metro Corridors will periodically distribute information about the program through the widely broadcasted emails to people on the Regional Greenways Collaborative (RGC) database, through the RGC quarterly meetings, and jointly held county meetings. As projects are completed, Friends of the Minnesota Valley will publicize project accomplishments through press releases, the Friends' quarterly newsletter, and post projects on our website.

VIII. REPORTING REQUIREMENTS: Periodic work program progress reports will be submitted not later than February 1st and August 1st each year, starting with February 1st, 2006. A final work program report will be submitted by July 1st, 2008.

IX. RESEARCH PROJECTS: NA

Attachment A Final: Budget Detail for 2005 Metro Corridors Project

date: June 30, 2008

Project Title: Metropolitan Area Wildlife Corridors - Phase II: 2.4 Lower Minnesota River Watershed Restoration & Enhancement Project - Friends of the Minnesota Valley

Project Manager Name: Joe Pavelko

LCMR Requested Dollars: 40,000 \$ 40,000

BUDGET ITEM	Amount Budgeted (\$)	Amount Spent (\$)	Balance (\$)	Comments
PERSONNEL				
Staff expenses, wages, salaries, & benefits	\$ 5,000.00	\$5,000.00	\$ -	Kevin Bigalke - Director of Conservation Programs, Project coordination and implementation, .15 FTE
EQUIPMENT				
Equipment / Tools				
Other Capital equipment				
EQUIPMENT - SUBTOTAL	\$ -	\$ -	\$ -	
DEVELOPMENT				
Contracts	\$2,391	\$2,391	\$ -	Work will include site preparation, construction of projects, seeding
Other land improvement	\$ 32,609.00	\$ 32,609.00	\$ -	This will be used to purchase native plants and seed that will be used during implementation of project done by staff, volunteers, and other non-contracted work.
Supplies				
DEVELOPMENT - SUBTOTAL	\$ 35,000.00	\$ 35,000.00	\$ -	
ACQUISITION				
Land acquisition (fee title & conservation easement)				
Land transaction costs (e.g. survey, title, appraisal, environmental, & legal)				
ACQUISITION - SUBTOTAL	\$ -	\$ -	\$ -	
OTHER				
Easement stewardship				
Printing				
Other Supplies				
Travel expenses in Minnesota				
OTHER - SUBTOTAL	\$ -	\$ -	\$ -	
TOTAL LCMR Funding	\$ 40,000.00	\$ 40,000.00	\$ -	

2005 Project Abstract

For the Period Ending June 30, 2007

TITLE: Metropolitan Area Wildlife Corridors – Phase II: 2.5 Restore and Enhance Significant Habitat – Great River Greening.

PROJECT MANAGER: Wiley Buck

ORGANIZATION: Great River Greening

ADDRESS: 35 W. Water St., Ste. #201, St. Paul, MN 55107

WEB SITE ADDRESS: www.greatrivergreening.org

FUND: Minnesota Environment and Natural Resources Trust Fund (Trust Fund)

LEGAL CITATION: ML 2005, 1st Spec. Sess., Chap. 1, Art. 2, Sec. 11, Subd. 5b.

APPROPRIATION AMOUNT: \$100,000

Overall Project Outcome and Results

Great River Greening's 13 projects in the Metro Corridors priority focus area included restoration of Minnesota County Biological Survey (MCBS)-quality dry prairies, wetlands, oak woodland, large floodplain and hardwood forests, and shoreline. Criteria for projects included ecological significance and partner commitment.

In total, Great River Greening restored 0.24 mile of shoreline and 135 acres of high quality natural areas at 13 different sites, leveraging over \$202,000 in non-state funds. At least 1005 volunteers contributed to these restorations. These projects enhanced habitat for at least 11 populations of state-listed species.

Great River Greening's restoration projects were:

1. Mississippi River shoreline restoration and native planting, Brooklyn Center;
2. Floodplain forest gap restoration and planting, Crosby Regional Park, St. Paul;
3. Floodplain forest and streambank restoration, Cargill Salt, Savage on the Credit and Minnesota Rivers;
4. Oak savanna restoration, Indian Mounds Regional Park, St. Paul;
5. Prescribed burn at Pioneer Park, Blaine;
6. Hill prairie restoration, Hidden Valley Park, Savage;
7. Mississippi River shoreline revetment and restoration, Coon Rapids;
8. Prescribed wetland burns, Big Marine Lake, Scandia;
9. Prescribed burn, prairie remnant, St. Croix Valley recreation trail, Lake St. Croix Beach;
10. Riparian forest restoration, Meeker Dam/Desnoyer Seep, St. Paul;
11. Vegetated detention pond with native species, Arcola Mills Historic Foundation, Stillwater;
12. Oak savanna and prairie reconstruction at Pilot Knob Hill Phase I, Mendota Heights; and
13. "Big Woods" invasive removal and oak planting, Independence.

Project Results Use and Dissemination

Great River Greening lists projects, techniques, and community volunteer events on its website, www.greatrivergreening.org; highlights projects and events in its newsletter (circulation 4000); mails monthly e-postcard (circulation 1900), event brochures and flyers; provides signs at volunteer events; and issues press releases. Projects are typically collaborations with partners that foster exchange of information on techniques, strategies, and priorities, and often engage community volunteers, building community capacity and understanding of restoration and the importance of natural areas. Where possible, we work with partners to continue stewardship beyond state funding with volunteers, employees, and other community members.

LCMR 2005 Work Program

Date of Report: February 8, 2008
Title: LCMR Final Work Program Report
Date of Next Status Report: n/a
Date of Work program Approval: June 14, 2005

Project Completion Date: June 30, 2008

I. PROJECT TITLE: Metropolitan Area Wildlife Corridors – Phase II: 2.5 Restore and Enhance Significant Habitat – Great River Greening.

Project Manager: Wiley Buck
Affiliation: Great River Greening
Mailing Address: 35 W. Water St., Ste. #201
City / State / Zip : St. Paul, MN 55107
Telephone Number: 651-665-9500 x15
E-mail Address: wbuck@greatrivergreening.org
FAX Number: 651-665-9409
Web Page address: www.greatrivergreening.org

Location: Within mapped Focus Area and within the counties of Anoka, Carver, Chisago, Dakota, Goodhue, Hennepin, Isanti, LeSueur, Nicollet, Ramsey, Rice, Scott, Sherburne, Sibley, and Washington. See Figure 1.

Total Biennial LCMR Project Budget:	LCMR Appropriation:	\$ 100,000
	Minus Amount Spent:	\$ 100,000
	Equal Balance:	\$ -0-

Legal Citation: ML 2005, 1st Spec. Sess., Chap. 1, Art. 2, Sec. 11, Subd. 5b.

Appropriation Language: Metropolitan Area Wildlife Corridors – Phase II. \$1,765,000 the first year and \$1,765,000 the second year are from the trust fund to the commissioner of natural resources for the second biennium for acceleration of agency programs and cooperative agreements with the Trust for Public Land, Ducks Unlimited, Inc., Friends of the Mississippi River, Great River Greening, Minnesota Land Trust, Minnesota Valley National Wildlife Refuge Trust, Inc., Pheasants Forever, Inc. and Friends of the Minnesota Valley for the purposes of planning, improving, and protecting important natural areas in the metropolitan region, as defined by Minnesota Statutes, section 473.121, subdivision 2 and portions of the surrounding counties, through grants, contracted services, conservation easements, and fee acquisition. Land acquired with this appropriation must be sufficiently improved to meet at least minimum management standards as determined by the commissioner of natural resources. Expenditures are limited to the identified project areas as defined in the work program. This appropriation may not be used for the purchase of residential structures, unless expressly approved in the work program. Any land acquired in fee title by the commissioner of natural resources with money

from this appropriation must be designated: (1) as an outdoor recreation unit under Minnesota Statutes, section 86A.07; or (2) as provided in Minnesota Statutes, sections 89.018, subdivision 2, paragraph (a); 97A.101; 97A.125; 97C.001; and 97C.011. The commissioner may similarly designate any lands acquired in less than fee title. This appropriation is available until June 30, 2008, at which time the project must be completed and final products delivered, unless an earlier date is specified in the work program.

II and III. FINAL PROJECT SUMMARY:

Great River Greening's 13 projects in the Metro Corridors priority focus area included restoration of Minnesota County Biological Survey (MCBS)-quality dry prairies, wetlands, oak woodland, large floodplain and hardwood forests, and shoreline. Criteria for projects included ecological significance and partner commitment.

In total, Great River Greening restored 0.24 mile of shoreline and 135 acres of high quality natural areas at 13 different sites, leveraging over \$202,000 in non-state funds. At least 1005 volunteers contributed to these restorations. These projects enhanced habitat for at least 11 populations of state-listed species.

Great River Greening's restoration projects were:

1. Mississippi River shoreline restoration and native planting, Brooklyn Center;
2. Floodplain forest gap restoration and planting, Crosby Regional Park, St. Paul;
3. Floodplain forest and streambank restoration, Cargill Salt, Savage on the Credit and Minnesota Rivers;
4. Oak savanna restoration, Indian Mounds Regional Park, St. Paul;
5. Prescribed burn at Pioneer Park, Blaine;
6. Hill prairie restoration, Hidden Valley Park, Savage;
7. Mississippi River shoreline revetment and restoration, Coon Rapids;
8. Prescribed wetland burns, Big Marine Lake, Scandia;
9. Prescribed burn, prairie remnant, St. Croix Valley recreation trail, Lake St. Croix Beach;
10. Riparian forest restoration, Meeker Dam/Desnoyer Seep, St. Paul;
11. Vegetated detention pond with native species, Arcola Mills Historic Foundation, Stillwater;
12. Oak savanna and prairie reconstruction at Pilot Knob Hill Phase I, Mendota Heights; and
13. "Big Woods" invasive removal and oak planting, Independence.

IV. OUTLINE OF PROJECT RESULTS:

Result 1: Restore and Enhance Significant Habitat

Description: Great River Greening anticipates restoring and/or enhancing 50 acres of ecologically significant natural areas and habitat, plus 15 acres using leveraged funds for a total of 65 project acres. Native plant community restoration will be our primary focus, and may include prairie, forest, savanna, wetland, floodplain, and shoreline within the focus area. Greening ecologists will select specific locations and projects based on our analyses of priority sites, and in consultation with the community, city, and other partners. Restoration projects will likely include invasive species removal, native plant community reconstruction, supplemental seeding and planting, prescribed burning, and more. We anticipate working on three to ten sites in the focus area.

Summary Budget Information for Result 1:	LCMR Budget	<u>\$ 100,000</u>
	Balance	<u>\$ -0-</u>

Completion Date:

It is anticipated that by February 1, 2006 Greening will have restored 20 acres

It is anticipated that by February 1, 2007, Greening will have restored an additional 20 acres, for a total of 40 acres.

It is anticipated that by February 1, 2008, Greening will have restored an additional 10 acres for a total of 50 acres.

Final Report Summary:

In total, Great River Greening restored 0.24 mile of shoreline and 135 acres of high quality natural areas at 13 different sites, leveraging over \$202,000 in non-state funds. At least 1005 volunteers contributed to these restorations. Of the 134 acres, 51 acres are attributed to Metro Corridors (including 1 to FMV); 2 to other state sources (Conservation Partners) and 82 acres to non-state sources. This acreage pro-rating reflects the success we have had raising non-state matching funds. We exceeded our acreage goals, in large part due to opportunities to conduct relatively large prescribed (Rx) burns on important areas.

In the remainder of Phase III and Phase IV, we anticipate being more selective in our stormwater management projects, as it is difficult to quantify the results of some types in the acreage and shoreline tallies. However, projects such as the bluffline erosion control projects we have in 2007 Phase III, which have impacted acreage directly attributable to them, will continue to be pursued. We do not consider this a problem as there are many worthy projects that can be quantified in acreage and shoreline.

Specific results for each completed project follows:

1. Mississippi River shoreline restoration and native planting project in Brooklyn Center restored 0.20 mile and 1.5 acres of Mississippi River shoreline spanning 8 contiguous private landowners. Turfgrass and rip-rap were

- converted to native vegetation including shrubs, seeds, grasses and flowers. The plantings were done at a high density to stabilize the slopes and increase diversity. The project is located directly shoreside of the Anoka Co. Island of Peace Park island, and is a priority site for the Mississippi National River and Recreation Area (MNRRA).
2. The Crosby Park floodplain/terrace forest gap restoration was completed including an extra large spring 2006 volunteer event with Admission Possible, engaging 373 talented, motivated and economically disadvantaged high school seniors to plant a high diversity of trees and shrubs. Avalon High School students also volunteered twice. This project sparked an upwelling of volunteer and funding support, and grew from 12 acres to 28 acres. Blanding's turtle and cerulean warbler have been found in the area. Off-shore, the area is known as a former mussel concentration, undergoing reintroductions.
 3. Ten acres of streambank plantings, forest gap plantings, and buckthorn control (using leveraged funds) at Cargill Salt, Savage on the Credit and Minnesota Rivers, which included a 35-employee event, were completed in fall 2006. The plantings were heavily damaged in the drought of 2007; we are working with Cargill to return to the site with a modified planting approach and greater emphasis on post-installation maintenance. The buckthorn control was very successful, employing the inexpensive basal bark method, effectively preventing the buckthorn from spreading while temporarily storing carbon in the standing dead material.
 4. A 275-person volunteer event was held in the fall 2006 at Indian Mounds Park, St. Paul, a kitten-tails site, restoring five acres of oak savanna with buckthorn removal, and planting of native trees, shrubs, grasses and forbs. Restoration maintenance and expansion are currently being developed there with various partners.
 5. A 35-acre fall 2006 prescribed burn was completed at Pioneer Park, Blaine, as part of the on-going wetland restoration, covering the original Metro Greenways project area with six state-listed species, and surrounding buffer.
 6. In spring 2007, invasive species control and a burn were completed at Hidden Valley Park, Savage on the Credit River to enhance the restoration of the Minnesota County Biological Survey (MCBS)-quality prairie and adjacent reconstruction, with two listed species, totaling 4.5 acres. The leadplant responded remarkably well.
 7. Restoration of ~200' (.04mi) of eroding Mississippi riverbank at the Coldwell residence, Coon Rapids, demonstrating alternatives to the area's rip-rap and retaining walls, was completed in spring 2007. It will be a demonstration site in Greening/Mississippi Watershed Management Organization's (MWMO) Riverbank Restoration Guide. The cedar revetments and live staking will result in direct water quality and habitat improvement. Leveraged funds were twice the Corridor investment.
 8. Two spring 2007 burns totaling 8 acres at Big Marine Lake were completed for management of one population of state-endangered tubercled rein-orchid, and a potential seed bank of state-threatened lance-leaved violet.

9. 3.5 acres were burned in spring 2007 along the recreation trail in the St. Croix Valley in Lake St. Croix Beach to rejuvenate a prairie remnant. Native grasses and forbs responded well. It was the first burn for the remnant in many years, and required extensive cooperation from Washington County DOT and adjacent landowners.
10. A 170-person volunteer event was held at St. Paul Parks' Meeker Dam/Desnoyer Seep site in the river gorge in the spring of 2007. Fifteen acres of primarily oak forest and seep communities were restored, including invasive species removal and planting of over 1,700 native trees, shrubs, and under-story plants.
11. A retention pond at Arcola Mills Historic Foundation on the St. Croix River, was installed and vegetated with 350 native plants in spring 2007, intercepting and treating runoff before it reaches the St. Croix River. This site hosts at least three populations of state listed species.
12. In fall 2007, site prep was concluded at Pilot Knob Hill Phase I, Mendota Heights, and the 8 acres were seeded to prairie and savanna, including a volunteer event for hand-seeded areas. Per the MN-DNR's 2006 Comprehensive Wildlife Conservation Strategy, Pilot Knob Hill is located in a top rated township for Species of Greatest Conservation Need (SGCN) needs and opportunities, and prairie and oak savanna restoration are top priorities. This DNR publication underscores the importance of the Pilot Knob Hill restoration.
13. A 17-acre high quality oak forest restoration was completed in late fall 2007 at the Johnson residence near Baker Park Reserve, Independence. This land is permanently protected under a Board of Water and Soil Resources (BWSR) easement (the restoration activities we completed are not required under the easement). This site is a priority for Hennepin County Environmental Services, who provided matching funds including those needed for unanticipated buckthorn removal costs. Fifty oak trees were planted with deer protection in forest gaps throughout the site. A recent windstorm toppled several over-mature oaks in the immediate vicinity of several of the plantings, underscoring their importance.

The Lake St. Croix Beach public raingarden mentioned in progress reports is still pending completion; the City Council has not yet voted to complete the project. We have not included this project in our results. To date, a minimal amount of Metro Corridors funds were used to supply a design for the raingarden. Initial improvements were made to upgrade the site to a floodwater detention area, but to date it does not function as stormwater management area during normal rainfall events.

The Hidden Valley Park restoration we feel is exemplary of our work. The City of Savage has proven itself to be a dedicated partner with multi-year matching funds and local expertise. It is an MCBS-quality site facing many of the common

challenges to natural areas and requiring careful management. Our restoration activity at the site has led us to a potential cluster of projects in the area along the now-impaired Credit River, including Cargill Salt and a Hidden Valley raingarden project in 2007 Phase III.

In total, Great River Greening restored 0.24 mile of shoreline and 135 acres of high quality natural areas at 13 different sites, leveraging over \$202,000 in non-state funds. At least 1005 volunteers contributed to these restorations. These projects enhanced habitat for at least 11 populations of state-listed species.

TOTAL LCMR PROJECT BUDGET:

All Results: Personnel: \$33,500
All Results: Equipment: \$10,300
All Results: Development: \$47,500
All Results: Acquisition: \$ -0-
All Results: Other: \$8,700

TOTAL LCMR PROJECT BUDGET: \$ 100,000

Explanation of Capital Expenditures Greater Than \$3,500:

Greening anticipates purchasing a 4wd truck at or near the beginning of this project period. We estimate that the pro-rated portion of the purchase price attributable to Metro Area Wildlife Corridor Phase II activities, based on usage of the truck, will be \$7800 over the project period. We estimate that over the project periods, this purchase will be less costly to the Environment and Natural Resources Trust Fund than a rental.

If at the end of this project period the truck is still useful, we will pay back the Environment and Natural Resources Trust Fund an amount equal to either the pro-rated cash value at that date or a pro-rated residual value approved by the LCMR director if it is sold.

V. OTHER FUNDS & PARTNERS:

A. Project Partners: See Table 1.

B. Other Funds being Spent during the Project Period:

Greening could potentially spend the following additional money during the project period:

National Fish and Wildlife Foundation \$ 7,000
USFWS Partners for Fish and Wildlife \$2,500

A Local Unit of Government \$20,000 - \$30,000

Greening In-Kind \$5,000

C. Required Match (if applicable): NA

D. Past Spending:

- Big Rivers Partnership (BRP) funded by an \$800,000 appropriation from LCMR during the 1999-2001 biennium, and matched by at least \$374,000 through public and private sources, and \$50,000 from the National Park Service for inventory work during this same biennium.
- LCMR appropriation during the 2002-2003 biennium of \$910,000 to build on the successful Big Rivers Partnership.
- LCMR History: \$300,000 RIM Critical Habitat Match – Environmental Trust Fund and Future Resource Fund.
- Non-LCMR History: \$2.6 million foundation, corporate, and private contributions.
- Metro Area Wildlife Corridors Phase I : Restore and Enhance Significant Habitat. \$124,000 awarded in 2003.

E. Time: 3 years, until June 30, 2008.

VI. DISSEMINATION: Metro Corridors will periodically distribute information about the program through the widely broadcasted emails to people on the Regional Greenways Collaborative (RGC) database, through the RGC quarterly meetings, and jointly held county meetings. As projects are completed, Greening will periodically publicize accomplishments through press releases, e-postcards, quarterly newsletter, and on our website.

VIII. REPORTING REQUIREMENTS: Periodic work program progress reports will be submitted not later than February 1st and August 1st each year, starting with February 1st, 2006. A final work program report will be submitted by July 1st, 2008.

IX. RESEARCH PROJECTS: NA

Attachment A: Budget Detail for 2005 Metro Corridors Project
 Project Title: Metro Area Wildlife Corridors - Phase II: 2.5 Restore and Enhance Significant Habitat - Great River Greening
 Legal Citation: Laws of Minnesota 2005, Chapter 1, Article 2, Section 11

Project Manager Name: Wiley Buck
 LCMR Requested Dollars: \$ 100,000

BUDGET ITEM	Budget 2/1/07	Amount Spent as of 2/1/08 (\$)	2/1/08 balance	Comments
PERSONNEL				
Staff expenses, wages, salaries, & benefits	\$ 33,500.00	\$ 33,500.00	\$ -	Project Mgr, Buck .06FTE; Project Asst, Wenz, .02FTE; Office Asst, Gagner, .03FTE; Ecologists Buck/Harris/Shaw .1FTE; Field Coordinator, Hammerschmidt, .4FTE; Restoration Technicians Varien/Peterson/Seasonal, 1.0FTE; Volunteer Manager Johnston/Buda .0
EQUIPMENT				
Equipment / Tools	\$ 2,500.00	\$ 2,500.00	\$ -	chainsaws, brush cutters, sprayers, shovels, loppers, weed wrenches, bow saws, water packs, drip torch.
Other Capital equipment	\$ 7,800.00	\$ 7,800.00	\$ -	Pro-rated portion of 4wd truck purchase
EQUIPMENT - SUBTOTAL	\$ 10,300.00	\$ 10,300.00	\$ -	
DEVELOPMENT				
Contracts	\$ 11,836.05	\$ 11,836.05	\$ -	site prep, mulch delivery, prairie install
Other land improvement	\$ 32,763.95	\$ 32,763.95	\$ -	chemical, plants, seeds
Supplies	\$ 2,900.00	\$ 2,900.00	\$ -	gloves, safety glasses, pin flags, flagging tape, stakes, misc parts
DEVELOPMENT - SUBTOTAL	\$ 47,500.00	\$ 47,500.00	\$ -	
ACQUISITION				
Land acquisition (fee title & conservation easement)			\$ -	
Land transaction costs (e.g. survey, title, appraisal, environmental, & legal)			\$ -	
ACQUISITION - SUBTOTAL			\$ -	
OTHER				
Easement stewardship		\$ -	\$ -	
Printing		\$ -	\$ -	
Volunteer Event Supplies	\$ 7,550.00	\$ 7,550.00	\$ -	approved food and bev, portable toilets, tents, signage, PA system
Other Supplies	\$ 50.00	\$ 50.00	\$ -	mapping supplies
Travel expenses in Minnesota	\$ 1,100.00	\$ 1,100.00	\$ -	
OTHER - SUBTOTAL	\$ 8,700.00	\$ 8,700.00	\$ -	
TOTAL LCMR Funding	\$ 100,000.00	\$ 100,000.00	\$ -	

2005 Project Abstract

For the Period Ending June 30, 2008

PROJECT TITLE: Metro Conservation Corridors – Phase II DNR- Metro Greenways (2.6 & 3.4)

PROJECT MANAGER: Marybeth Block

AFFILIATION: DNR, Central Region

MAILING ADDRESS: 1200 Warner Road

CITY/STATE/ZIP: St. Paul, MN 55106

PHONE: 651-259-5835

FAX: 651-772-7977

E-MAIL: Marybeth.block@dnr.state.mn.us

WEBSITE: <http://www.dnr.state.mn.us/greenways/index.html>

FUNDING SOURCE:

LEGAL CITATION: 2005, 1st Spec. Sess., Chap. 1, Art. 2, Sec. 11, Subd. 5b.

APPROPRIATION AMOUNT: \$1,200,000

1st Year appropriation: \$590,000

2nd Year appropriation \$ 610,000

Overall Project Outcome and Results: The DNR Metro Greenways mission is to ***protect, connect and restore*** a regional network of significant natural areas in the growth corridor of the state. The program's goals are accomplished by supporting local governments' conservation efforts with matching grants, while insuring each individual effort contributes to the regional network concept.

During this program period, eligible applicants nominated 33 projects requested over \$9 million dollars to restore regionally important habitats. An advisory committee rated the project proposals and made funding recommendations that were approved by the DNR Commissioner.

\$170,651 was awarded to 13 projects to restore 376 acres to native plant communities on mostly public land. Many of these projects involved converting cropland to native vegetation, while others worked to remove non-native invasive species such as buckthorn. The total cost of the restoration work by all projects was \$486,652.

\$1,029,349 was awarded to six projects that, when combined with other funding partners, acquired a total of 1,125 acres. Metro Greenways protects natural habitats through direct acquisition or by purchasing a conservation easement from landowners to protect certain attributes such as open space, rare and endangered species or critical habitat. During this program period, three conservation easements were acquired - two provide a buffer for Wild River State Park and the third buffers the Carlos Avery Wildlife Management Area. Elk River purchased a high quality oak forest to add land to a city park and greenway corridor. Finally, a parcel with high quality mixed hardwoods, wetland and lakeshore was purchased in conjunction with the establishment of East Rush Lake Wildlife Management Area established in Chisago County. Metro Greenways funded approximately one-quarter of the total cost of the acquisition projects, which totaled over \$3.8 million dollars.

Project Results Use and Dissemination

The Metro Greenways, in collaboration with the Metro Conservation Corridors Partnership, produced and distributed a map depicting the focus areas of the partnership and an informational brochure about the partners and the types of projects funded through the partnership's efforts. Meetings were convened throughout the project area with various local government staff and officials charged with managing natural resources and implementing land use practices and regulations. In addition, press releases were sent to local newspapers where restoration or acquisition projects were funded. All DNR Metro Greenways-generated news releases cited the required MN Environment and Natural Resources Trust Fund attribution language.

LCMR 2005 Final Work Program Report

Date of Report: August 15, 2008
Date of Work program Approval: June 14, 2005
Project Completion Date: June 30, 2008

I. PROJECT TITLE: Metro Conservation Corridors – Phase II
DNR- Metro Greenways (2.6 & 3.4)

Project Manager: Marybeth Block
Affiliation: DNR, Central Region
Mailing Address: 1200 Warner Road
City / State / Zip: St. Paul, MN 55106
Telephone Number: 651-259-5835
E-mail Address: Marybeth.block@dnr.state.mn.us
FAX Number: 651-772-7977
Web Page address: <http://www.dnr.state.mn.us/greenways/index.html>

Location: Within mapped Focus Areas and within the counties of Anoka, Carver, Chisago, Dakota, Hennepin, Isanti, Ramsey, Scott, Sherburne, and Washington (**Figure 1**).

Total Biennial LCMR Project Budget:	LCMR Appropriation:	\$1,200,000
	Amount Spent:	\$1,200,000
	Balance:	\$ 0

1st Year appropriation: \$590,000

2nd Year appropriation \$ 610,000

Explanation: \$10,000 of the 1st year appropriation for the Metro Greenways portion of the Metro Area Wildlife Corridors (MWC) project will be allocated to Forest Legacy and \$10,000 of the Forest Legacy 2nd year appropriation will be allocated back to the Metro Greenways portion of MWC project due to timing of a single Forest Legacy acquisition project. In addition, \$90,000 of Metro Greenways Result 2 funds will be shifted to Result 1 in the first year to allow the Metro Greenways restoration grants to be accelerated, then shifted back to Result 2 in the second year.

Legal Citation: ML 2005, 1st Spec. Sess., Chap. 1, Art. 2, Sec. 11, Subd. 5b.

Appropriation Language: Metropolitan Area Wildlife Corridors – Phase II. \$1,765,000 the first year and \$1,765,000 the second year are from the trust fund to the commissioner of natural resources for the second biennium for acceleration of agency programs and cooperative agreements with the Trust for Public Land, Ducks Unlimited, Inc., Friends of the Mississippi River, Great River Greening, Minnesota Land Trust, Minnesota Valley National Wildlife Refuge Trust, Inc., Pheasants Forever, Inc. and Friends of the Minnesota Valley for the purposes of planning, improving, and protecting important natural areas in the metropolitan region, as defined by Minnesota Statutes, section 473.121, subdivision 2 and portions of the surrounding counties, through grants, contracted services, conservation easements, and fee acquisition. Land acquired with this appropriation must be sufficiently improved to meet at least minimum management standards as determined by the commissioner of natural resources. Expenditures are limited to the identified project areas as defined in the work program. This appropriation may not be used for the purchase of residential structures, unless expressly approved in the work program. Any land acquired in fee title by the commissioner of natural resources with money from this appropriation must

be designated: (1) as an outdoor recreation unit under Minnesota Statutes, section 86A.07; or (2) as provided in Minnesota Statutes, sections 89.018, subdivision 2, paragraph (a); 97A.101; 97A.125; 97C.001; and 97C.011. The commissioner may similarly designate any lands acquired in less than fee title. This appropriation is available until June 30, 2008, at which time the project must be completed and final products delivered, unless an earlier date is specified in the work program.

II. and III. Final Project Summary

The DNR Metro Greenways mission is to **protect, connect and restore** a regional network of significant natural areas in the growth corridor of the state. The program's goals are accomplished by supporting local governments' conservation efforts with matching grants, while insuring each individual effort contributes to the regional network concept.

During this program period, eligible applicants nominated 33 projects requested over \$9 million dollars to restore regionally important habitats. An advisory committee rated the project proposals and made funding recommendations that were approved by the DNR Commissioner.

\$170,651 was awarded to 13 projects to restore 376 acres to native plant communities on mostly public land. Many of these projects involved converting cropland to native vegetation, while others worked to remove non-native invasive species such as buckthorn. The total cost of the restoration work by all projects was \$486,652.

\$1,029,349 was awarded to six projects that, when combined with other funding partners, acquired a total of 1,125 acres. Metro Greenways protects natural habitats through direct acquisition or by purchasing a conservation easement from landowners to protect certain attributes such as open space, rare and endangered species or critical habitat. During this program period, three conservation easements were acquired - two provide a buffer for Wild River State Park and the third buffers the Carlos Avery Wildlife Management Area. Elk River purchased a high quality oak forest to add land to a city park and greenway corridor. Finally, a parcel with high quality mixed hardwoods, wetland and lakeshore was purchased in conjunction with the establishment of East Rush Lake Wildlife Management Area established in Chisago County. Metro Greenways funded approximately one-quarter of the total cost of the acquisition projects, which totaled over \$3.8 million dollars.

IV. OUTLINE OF PROJECT RESULTS

Result 1: Restore and Enhance Significant Habitat

Final Report Summary: DNR Metro Greenways solicited projects through an open process and received 15 applications requesting \$739,000 to complete ecological restoration projects. The Metro Greenways Advisory Committee ranked and scored the applications according to the criteria distributed with the request for proposals. 13 grants totaling \$180,000 were awarded to seven local governments and six non-profit organizations to restore 376 acres in the Metro Conservation Corridors (MeCC) focus areas. All projects provided at least a 50 percent match with the total project costs exceeding the \$412,652 predicted in the project applications.

Project managers reported the removal of non-native, exotic species on 223 acres. Most of these efforts focused on removing buckthorn, but honeysuckle, box elder, reed canary grass and spotted knapweed were also target species. The City of Woodbury teamed up with St. Paul and sent the harvested and chipped biomass to the city's incinerary to produce energy. Three projects (Silver Creek, Kingston and Belwin) worked with private property owners to remove invasive plants on sensitive areas and teach the landowners long-term management

strategies. The Dodge Nature Center was able to restore more acres than originally projected utilizing volunteers, and the Hastings Sand Coulee project (led by the Friends of the Mississippi) partnered with the Hastings High School to control spotted knapweed. The high school teacher secured additional grant funds to employ biological control to combat this aggressive species. All of the projects reported their efforts as successful, although the eradication of reed canary grass appeared to be more costly and more difficult than anticipated in the project applications.

The project managers also reported 153 acres were planted to restore lands to woodland, savanna, wetland and prairie. (Some of these plantings were on the lands that had non-native species removed.) The Hastings Sand Coulee projects used some of the volunteers to collect seeds from the site to augment the seed and seedlings planted on the site. The Science Museum of Minnesota's St. Croix Greenway Sand Prairie project included a study focused on maximizing floristic diversity on the restored acres. The planting area was divided into 26 study areas to evaluate which grass-to-forb composition ratios provide the greatest diversity for the least cost.

Four projects came in under their projected budget resulting in a \$9,349.20 balance. To facilitate closing out the funding for this project the balance was transferred to Result 2 and used to partially fund the acquisition of the Pilot Knob Phase II project, which was awarded a grant under the MeCC DNR Metro Greenways Phase 3 Work Program.

Summary Budget Information for Result 1:

LCMR Budget:	\$ 180,000
Amount Spent:	\$ 170,651
Amount transferred	\$ 9,349
Balance:	\$ 0

Specific information on each of the projects follows:

Project Name	Location	Total Cost or Value \$	MG Funding	Reimbursed \$	Total Acres	Project results
Dodge NC - Marie Property	West St. Paul, Dakota County	\$27,000	\$5,000	\$5,000	15	15 acres of oak woodland restored by DNC and volunteers, primarily by removing buckthorn. Dodge Nature Center is property holder.
Silver Creek (Fairy Pond)	Stillwater Twmsp., Washington Cty.	\$30,000	\$15,000	\$15,000	17.2	17.2 acres was restored: bank re-vegetation, prairie restoration, invasive species removal/mgmt., and reforestation. Private landowners are the property holders.
Fish Lake Greenway	Woodbury, Washington Cty.	\$64,751	\$15,000	\$15,000	28	24 acres have been treated, burned, and seeded and 4 acres of wetland was treated with herbicide to control reed canary grass. The property holder is the City of Woodbury.
Hastings River Flats Park	Hastings, Dakota County	\$15,242	\$5,000	\$5,000	62	500+ prairie plants installed on 700 sf, 2 acres of wet meadow weeded, 25 vegetated mats installed on 2 acres of shoreline, 30 acres of prairie restored and burned, and buckthorn cut and treated in 3 acres of floodplain forest. Property holder is City of Hastings.
Project Name	Location	Total Cost	MG	Reimbursed	Total	Project results

		or Value \$	Funding	\$	Acres	
Hastings Sand Coulee	Hastings, Dakota County	\$29,400	\$15,000	\$13,910	25	25 acres sand prairie restored: exotic species removed using herbicide, hand-pulling & biological controls. Seed was collected and broadcasted. 2 acres of woodland were burned and 3 acres of prairie was burned. FMR monitored site conditions. Property is held by the City of Hastings.
Henry Woods	Hassan Twmsp., Hennepin County	\$33,000	\$15,000	\$12,600	13	13 acres of big woods were restored: 50 oak seedlings installed, spot spraying of reed canary grass, and 650 native plants installed. Hassan Township is the property holder.
Kingston Property	Washington Cty SWCD.	\$30,850	\$15,000	\$15,000	25	25 acres of land has been restored: 2.7 acres of prairie burned, 25 acres managed for buckthorn, and 6 acres of woodland and old-field seeded with natives. Jeanne Kingston is the property holder.
Lake Minnewashta Reg. Park	Chanhassen, Carver County	\$45,500	\$20,000	\$14,154	12	12 acres of land has been restored to a Big Woods native plant community through removal of nonnative invasive species and replanting with native plant material. Property holder is Carver County.
Lebanon Hills Reg. Park	Eagan, Dakota County	\$44,750	\$20,000	\$20,000	25	25 acres of land at Lebanon Hills Regional Park have been restored to savanna: using herbicide, mowing, burning, seeding, planting. Property holder is Dakota County.
St. Croix Grnwy. Sand Prairie	May Twmsp., Washington Cty.	\$28,281	\$10,000	\$10,000	4	4 acres of high quality prairie were reconstructed incorporating over 70 local ecotype plant species planting techniques were assessed to determine which methods create the maximum floristic diversity for the least amount of cost. Property owner is the Science Museum of Minnesota.
Vegsund County Park	Stanchfield Twmsp., Isanti Cty.	\$29,838	\$15,000	\$15,000	30	30 acres were restored: buckthorn control, timber stand improvement. Property is held by Isanti County.
Wilder Forest	May Twmsp., Washington Cty.	\$38,040	\$15,000	\$15,000	90	90 acres of oak forest have been restored: invasive species removal and treatment, local ecotype seed collected and planted throughout 15 acres of sparsely vegetated forest areas. The Amherst Wilder Foundation holds property.
Belwin Foundation		\$70,000	\$15,000	\$15,000	30	Removing invasive species, principally buckthorn, restored 30 acres of degraded oak savanna. Much of the site had to be cleared by hand because of the steep slopes.

Correction (\$13) Account correction

TOTALS \$486,652 \$180,000 \$170,651 376

Completion Date: June 30, 2008

Result 2: Acquire Significant Habitat

Final Report Summary: Projects were solicited through an open process and 18 applications were submitted requesting \$8,275,000 dollars to protect ecologically important habitats. The Metro Greenways Advisory Committee ranked and scored the applications according to the criteria distributed with the request for proposals. DNR Metro Greenways awarded six grants to protect a total of 1,125 acres in the MeCC focus areas.

The City of Elk River acquired a 78 acre parcel of dry oak forest between two existing park parcels. Combined, the parcels form a 330 acre park, greenway and trail corridor. The City provided over 50 percent of the funds for this purchase, and DNR Scenic and Natural Area Program also granted funds to the project.

Private landowners granted two conservation easements to the Minnesota Land Trust to buffer Wild River State Park. Buffer 1 encompasses 80 acres and buffer 2 protects 140 acres. Both landowners sold the easements well below market value resulting in substantial donations.

The DNR Metro Greenways was granted a conservation easement from the Wildlife Science Center (a non-profit organization) to protect 153 acres adjacent to the Carlos Avery Wildlife Management Unit. The area protected is an important upland and wetland connection between the WMA and Camp Salie Anoka County Park. Much of the site has outstanding, diverse natural communities. DNR Metro Greenways funded 69 percent of the project, with the remaining funding provided by the Reinvest in Minnesota Matching Funds. A management plan was prepared for the area by staff of Carlos Avery WMA and the staff will also implement the plan. To secure and record this easement DNR and Attorney General professional and technical services were incurred.

Metro Greenways contributed to the establishment East Rush Lake Wildlife Management Area that protects high quality hardwoods, wetlands and lakeshore. Metro Greenways and Trust for Public Land each contributed about 20 percent of the purchase price, with the remaining 60 percent covered by DNR Division of Wildlife.

Finally, to facilitate closing out this program period approximately 20 percent of a project (Pilot Knob Phase II) awarded a grant under the 2007 MeCC Metro Greenways Phase 3 program period was paid from this allocation (\$55,487.10 of the \$200,000.)

Summary Budget Information for Result 3:	LCMR Budget:	\$1,020,000
	Amount Transferred:	\$ 9,349
	Amount Available:	\$1,029,349
	Amount Spent:	\$1,029,349
	Balance::	\$0

Specific information on each of the projects follows:

Project Name	Location	Description	Total Cost or Value \$	MG Funding	Total Acres	Other funding partners
Top of the World Park Addition	Elk River, Sherburne County	Acquired August 2006. High quality oak forest to be acquired by City as open space/passive park. MG funds will be granted to City	1,755,000	300,000	78	City of Elk River \$555,000; DNR Remediation \$500,000, LAWCON 400,000
East Rush Lake WMA/AMA	Nessel Twsp, Chisago County	February 2006 acquisition of parcel with high quality mixed hardwoods, wetland and lakeshore for new WMA/AMA	503,000	100,000	670	TPL \$100,000, \$303,000 DNR Division of Wildlife.
Wild River State Park Buffer I (Hanson)	Sunrise Twsp, Chisago County	Conservation easement acquired by MLT in Jan. 2007 on privately owned high quality forested property adjacent to Wild River State Park	270,000	200,000	80	Landowner donation of \$70,000
Wild River State Park Buffer II (Hultquist)	Amador Twsp, Chisago County	Conservation easement by MLT on private parcel adjacent to Wild River State Park	543,000	57,925	140	Landowner donation of \$485,075
Wildlife Science Center/ Carlos Avery Buffer	Linwood Twsp, Anoka County	Conservation easement acquired by DNR MG Jan. 2007 on private parcel adjacent to Carlos Avery containing a variety of CBS mapped natural communities	570,000	300,000	153	DNR Rim Matching funds \$135,000, landowner donation of \$135,000
P&Tech Services	DNR Lands and Minerals and AG	To secure and record the conservation easement held by DNR Metro Greenways	n/a	15,937.10	n/a	
Pilot Knob Phase II	City of Mendota Heights, Dakota County	Entire 15-acre parcel acquired in Jan. 2008. 73% funded in Phase 3 (2007). 27% funded in this program period to close out the program.	509,760	55,487.10	3.45	City of Mendota Heights, Dakota County and Trust for Public Land all funding partners.
TOTAL			\$3,824,760	\$1,029,349	1125	

V. TOTAL LCMR PROJECT BUDGET

All Results: Personnel: \$ 0

All Results: Equipment: \$ 0

All Results: Development (Restoration): \$170,651

All Results: Acquisition: \$1,029,349

All Results: Other: \$ 0

TOTAL LCMR PROJECT BUDGET: \$1,200,000

Explanation of Capital Expenditures Greater Than \$3,500: NA

VI. OTHER FUNDS & PARTNERS:

A. Project Partners: See Table 1 for MWC Partners. In addition, Metro Greenways will be working with numerous additional organizations through the Advisory Committee and as grant recipients and project cooperators. Major groups who have submitted preliminary project ideas and others with whom we expect to work include:

- Metropolitan Council
- Anoka Conservation District, Dakota SWCD, and other SWCD's
- Dakota County, Anoka Co. Parks & Recreation, Ramsey Co Parks, and other county units
- Watershed Districts & Water Management Organizations, e.g. SWCD, Rice Creek Watershed District, Carnelian-Marine WD
- Minnesota Pollution Control Agency

B. Other Funds being spent during the Project Period:

All 2005 and 2006 bonding has been put toward projects as of this update. The DNR budget proposal also has about \$189,000 in general funds for Metro Greenways for operating costs including Regional Operations staff (for MeCC/MG oversight, budget management, GIS assistance, technical assistance, etc.) Furthermore, the restoration grants should leverage more than \$300,000 from grantees (including local and regional park funding) and the acquisition projects are expected to leverage approximately \$2.8 million (including donated lands/easements, local, other state, and federal funding contributions).

C. Required Match (if applicable): NA

D. Past Spending: In the past 5 years, Metro Greenways has received the following direct appropriations:

- Metro Greenways – 2000 Bonding: \$1,500,000 appropriation
- Metro Greenways – 2001 LCMR: \$2,730,000 appropriation
- Metro Greenways – 2003 LCMR/Phase1 MWC: \$1,089,000 appropriation
- Metro Greenways – 2005 Bonding: \$0.5 million appropriation
- Metro Greenways – 2005 LCMR: \$1 million appropriation

Between 1998-2002, the DNR allocated about \$200,000 in general funds each year for Metro Greenways staff (2.5 FTE) and operating costs. Also, since inception of the program, over \$3 of non-state funds for every state dollar has been directly leveraged towards the projects funded by Metro Greenways.

E. Time: 3 years, until June 30, 2008.

VII. DISSEMINATION: Metro Corridors will periodically distribute information about the program through the widely broadcasted emails to people on the Regional Greenways Collaborative (RGC) database, through the RGC quarterly meetings, and jointly held county meetings. As projects are completed, Metro greenways will publicize accomplishments through press releases, organization newsletters and websites, etc.

VIII. REPORTING REQUIREMENTS: Periodic work program progress reports were submitted in February and August each year. This final work program report is being submitted by August 15,, 2008.

IX. RESEARCH PROJECTS: NA

Attachment A: FINAL REPORT Budget Detail for 2005 Metro Corridors Project - Date: 8/15/08
 Project Title: Metro Greenways

Project Manager Name: Marybeth Block
 LCMR Dollars: \$1,200,000

BUDGET ITEM	Result 1: Restoration			Result 2: Acquisition			TOTAL			Comments
	Amount Budgeted (\$)	Amount Spent (\$)	Balance (\$)	Amount Budgeted (\$)	Amount Spent (\$)	Balance (\$)	Amount Budgeted (\$)	Amount Spent (\$)	Balance (\$)	
DEVELOPMENT										
Land improvement	\$ 180,000	\$ 170,651	\$ 9,349				\$180,000	\$170,651	\$9,349	restoration grants and signage
DEVELOPMENT - SUBTOTAL	\$ 180,000		\$ 9,349	\$ -	\$ -	\$ -		\$0	\$9,349	balance transferred to acquisition
ACQUISITION										
Land acquisition (fee title & conservation easement)			\$ -	\$ 1,020,000	\$ 1,013,412	\$ 6,588	\$1,020,000	\$1,013,412	\$6,588	for fee title and conservation easement acquisitions
Land transaction costs (e.g. survey, title, appraisal, environmental, & legal)			\$ -	\$ -	\$ 15,937	\$ (15,937)	\$0	\$15,937	-\$15,937	Professional and technical services associated easement acquisition
ACQUISITION - SUBTOTAL	\$ -	\$ -	\$ -	\$ 1,020,000	\$ 1,029,349	\$ (9,349)	\$1,020,000	\$1,029,349	-\$9,349	
OTHER										
Travel expenses in Minnesota			\$ -				\$0	\$0	\$0	
OTHER - SUBTOTAL	\$ -	\$ -	\$ -	\$ -	\$ -	\$ -	\$0	\$0	\$0	
TOTAL LCMR Funding	\$ 180,000	\$ 170,651	\$ 9,349	\$ 1,020,000	\$ 1,029,349	\$ -	\$1,200,000	\$1,200,000	\$0	

2005 Project Abstract

For the Period Ending June 30, 2008

TITLE: Metropolitan Area Wildlife Corridors – Phase II: **Scientific & Natural Areas Restoration & Enhancement (2.7) & Acquisition (3.6)**

PROJECT MANAGER: Peggy Booth

ORGANIZATION: Department of Natural Resources, Scientific & Natural Area Program

ADDRESS: 500 Lafayette Rd, Box 25, St Paul, MN 55155-4025

WEB SITE ADDRESS: www.dnr.state.mn.us/snas

FUND: The Environment & Natural Resources Trust Fund

LEGAL CITATION: ML 2005, First Special Session, Chp. 1, Art. 2, Sec. 11, Subd. 5(b).

APPROPRIATION AMOUNT: \$300,000

Overall Project Outcome and Results

Result 1: Development of SNA lands. Ecological restoration and site enhancement were completed on 403 acres at 16 Scientific and Natural Areas in order to prevent the loss of important species, plant communities and features from accidental or willful human disturbance and natural catastrophe. Specifically, woodland restoration (including exotics control and deer exclosure), prairie restoration (including seed harvest, seeding, fire breaks, prescribed burning, and exotics control), and site development (fencing, signs, parking lot gates, trail clearing, and site cleanup) were done at one or more the following SNAs: Black Dog Preserve, Boot Lake, Cannon River Turtle Preserve, Falls Creek, Grey Cloud Dunes, Hastings Sand Coulee, Lost Valley Prairie, Mississippi River Islands, Pine Bend Bluffs, River Terrace Prairie, Savage Fen, St Croix Savanna, Seminary Fen, Spring Creek Prairie, Wolsfeld Woods, and Wood-Rill.

Result 2: Acquisition of Significant Habitat. Two sites of high biodiversity significance in Dakota County were acquired in part through this funding as designated Scientific and Natural Areas. First, in cooperation with The Trust for Public Land and the Dakota County Farmland and Natural Area Program, an addition to the Pine Bend Bluffs SNA was acquired of 31.73 acres (6.21 LCCMR acres) which protects a quarter mile of Mississippi River shoreline and bluffs including a grove of old growth white pine. Second, in cooperation with Dakota County Farmland and Natural Area Program and Friends of the Mississippi River, the new Hastings Sand Coulee SNA was created through acquisition of 76.66 acres (7.48 LCCMR acres) which is part of the largest sand gravel prairie remaining in the county that contains 13 rare species of animals and plants.

LCCMR 2005 Work Program Final Report

Date of Report: May 28, 2008

LCCMR 2005 Work Program Final Report

I. PROJECT TITLE: Metropolitan Area Wildlife Corridors – Phase II: **Scientific & Natural Areas Restoration & Enhancement (2.7) & Acquisition (3.6)**

Project Manager: Peggy Booth

Affiliation: Department of Natural Resources, Scientific and Natural Areas

Mailing Address: 500 Lafayette Road, Box 25

City / State / Zip : St. Paul, MN 55155

Telephone Number: 651-259-5088

E-mail Address: peggy.booth@dnr.state.mn.us

FAX Number: 651-296-1811

Web Page address: <http://www.dnr.state.mn.us/snas>

Location: Within mapped Focus Area and within the counties of Anoka, Dakota, Goodhue, Hennepin, LeSueur, Scott, Sherburne, and Washington. See Figure 1.

Total Biennial LCMR Project Budget:	LCMR Appropriation:	\$ 300,000
	Minus Amount Spent:	<u>300,000</u>
	Equal Balance:	\$ <u> 0</u>

Legal Citation: ML 2005, 1st Spec. Sess., Chap. 1, Art. 2, Sec. 11, Subd.5 (b).

Appropriation Language: Metropolitan Area Wildlife Corridors – Phase II. \$1,765,000 the first year and \$1,765,000 the second year are from the trust fund to the commissioner of natural resources for the second biennium for acceleration of agency programs and cooperative agreements with the Trust for Public Land, Ducks Unlimited, Inc., Friends of the Mississippi River, Great River Greening, Minnesota Land Trust, Minnesota Valley National Wildlife Refuge Trust, Inc., Pheasants Forever, Inc. and Friends of the Minnesota Valley for the purposes of planning, improving, and protecting important natural areas in the metropolitan region, as defined by Minnesota Statutes, section 473.121, subdivision 2 and portions of the surrounding counties, through grants, contracted services, conservation easements, and fee acquisition. Land acquired with this appropriation must be sufficiently improved to meet at least minimum management standards as determined by the commissioner of natural resources. Expenditures are limited to the identified project areas as defined in the work program. This appropriation may not be used for the purchase of residential structures, unless expressly approved in the work program. Any land acquired in fee title by the commissioner of natural resources with money from this appropriation must be designated: (1) as an outdoor recreation unit under Minnesota Statutes, section 86A.07; or (2) as provided in Minnesota Statutes, sections 89.018, subdivision 2, paragraph (a); 97A.101; 97A.125; 97C.001; and 97C.011. The commissioner may similarly designate any lands acquired in less than fee title. This appropriation is available until June 30, 2008, at which time the project

must be completed and final products delivered, unless an earlier date is specified in the work program.

II & III. FINAL PROJECT SUMMARY

Result 1: Development of SNA lands. Ecological restoration and site enhancement were completed on 403 acres at 16 Scientific and Natural Areas in order to prevent the loss of important species, plant communities and features from accidental or willful human disturbance and natural catastrophe. Specifically, woodland restoration (including exotics control and deer exclosure), prairie restoration (including seed harvest, seeding, fire breaks, prescribed burning, and exotics control), and site development (fencing, signs, parking lot gates, trail clearing, and site cleanup) were done at one or more the following SNAs: Black Dog Preserve, Boot Lake, Cannon River Turtle Preserve, Falls Creek, Grey Cloud Dunes, Hastings Sand Coulee, Lost Valley Prairie, Mississippi River Islands, Pine Bend Bluffs, River Terrace Prairie, Savage Fen, St Croix Savanna, Seminary Fen, Spring Creek Prairie, Wolsfeld Woods, and Wood-Rill.

Result 2: Acquisition of Significant Habitat. Two sites of high biodiversity significance in Dakota County were acquired in part through this funding as designated Scientific and Natural Areas. First, in cooperation with The Trust for Public Land and the Dakota County Farmland and Natural Area Program, an addition to the Pine Bend Bluffs SNA was acquired of 31.73 acres (6.21 LCCMR acres) which protects a quarter mile of Mississippi River shoreline and bluffs including a grove of old growth white pine. Second, in cooperation with Dakota County Farmland and Natural Area Program and Friends of the Mississippi River, the new Hastings Sand Coulee SNA was created through acquisition of 76.66 acres (7.48 LCCMR acres) which is part of the largest sand gravel prairie remaining in the county that contains 13 rare species of animals and plants.

IV. OUTLINE OF PROJECT RESULTS:

Result 1: Development of SNA lands

Summary Budget Information for Result 1:

LCMR Budget	\$50,000
Balance	<u>\$ 0</u>

Final Report Summary:

Ecological restoration and site enhancement and development were completed on 403 acres at 16 Scientific and Natural Areas. Specifically, woodland restoration (including exotics control and deer exclosure), prairie restoration (including seed harvest, seeding, fire breaks, prescribed burning, and exotics control), and site development (fencing, signs, parking lot gates, trail clearing, and site cleanup associated with removing buildings to restore native habitat) were done at one or more the following SNAs: Black Dog Preserve, Boot Lake, Cannon River Turtle Preserve, Falls Creek, Grey Cloud Dunes, Hastings Sand Coulee, Lost Valley

Prairie, Mississippi River Islands, Pine Bend Bluffs, River Terrace Prairie, Savage Fen, St Croix Savanna, Seminary Fen, Spring Creek Prairie, Wolsfeld Woods, and Wood-Rill. Without this funding support, the rare resources and plant communities at these sites would have deteriorated in quality and public use of these sites would have been compromised. Other Metro Corridors partners (Great River Greening, Friends of the Minnesota Valley, and Friends of the Mississippi River) also completed restoration work on several of these sites – with those acres counted by those partners.

Result 2: Acquisition of Significant Habitat

Summary Budget Information for Result 2:

LCMR Budget	\$250,000
Balance	<u>\$ 0</u>

Final Report Summary:

Two sites of high biodiversity significance in Dakota County were acquired in part through this funding as designated Scientific and Natural Areas. First, in cooperation with The Trust for Public Land and the Dakota County Farmland and Natural Area Program, an addition to the Pine Bend Bluffs SNA was acquired of 31.73 acres (6.21 LCCMR acres) which protects a quarter mile of Mississippi River shoreline and bluffs including a grove of old growth white pine. Second, in cooperation with Dakota County Farmland and Natural Area Program and Friends of the Mississippi River, the new Hastings Sand Coulee SNA was created through acquisition of 76.66 acres (7.48 LCCMR acres) which is part of the largest sand gravel prairie remaining in the county that contains 13 rare species of animals and plants.

Pine Bend Bluff SNA – Funding Source	\$s Spent	Pro-rated %	Pro-rated Acres
LCMR – SNA Direct Cost	\$ 161,600	17.8%	5.66
LAWCON	\$ 384,000	42.4%	13.45
RIM Match (state funds)	\$ 78,400	8.7%	2.75
Dakota County Farmland & Natural Area	\$ 266,000	29.4%	9.32
SUBTOTAL – Direct Fee Acquisition	\$ 890,000		
LCMR – SNA Real Estate Transaction \$s	\$ 15,662	1.7%	0.55
TOTAL	\$ 905,662	100.0%	31.73

Hastings Sand Coulee SNA – Funding Source	\$s Spent	Pro-rated %	Pro-rated Acres
LCMR – SNA Direct Cost	\$ 66,000	8.6%	6.60
State SNA bonding	\$ 153,000	20.0%	15.30
State general fund	\$ 161,000	21.0%	8.00
State Metro Greenways bonding	\$ 80,000	10.4%	8.00
Dakota County Farmland & Natural Area	\$ 300,000	39.1%	29.99
SUBTOTAL – Direct Fee Acquisition	\$ 760,000		

LCMR – SNA Real Estate Transaction \$s	\$ 6,738	0.9%	0.67
TOTAL	\$ 766,738	100.0%	76.66

V. TOTAL LCMR PROJECT BUDGET:

	<u>Budget</u>	<u>Balance</u>
All Results: Personnel:	\$32,619	\$ 0
All Results: Equipment:	\$ 0	0
All Results: Development:	\$17,381	\$ 0
All Results: Acquisition:	\$250,000	\$ 0
All Results: Other:	\$ 0	0

TOTAL LCMR PROJECT BUDGET: \$300,000

Explanation of Capital Expenditures Greater Than \$3,500: NA

OTHER FUNDS & PARTNERS:

A. Project Partners: See Table 1.

B. Other Funds being Spent during the Project Period: Laws 2003, SNA Bonding, \$500,000 (\$300,000 acquisition & \$200,000 development) and Laws 2005, SNA Bonding, \$300,000 (\$150,000 acquisition & \$150,000 development). Laws of 2005, Environmental Trust Fund. \$134,000 (SNA development, outstate area). RIM Critical Habitat Match Funding (\$46,000) will be directed to several SNA sites for enhancement and restoration in the East and Southeast Focus Area.

C. Required Match (if applicable): NA

D. Past Spending: Environmental Trust Fund, Laws of 2003, Chap.128, Art.1, Sec.9, Subd.5 (b), \$264,000 acquisition; Environmental Trust Fund, Laws of 2003, Art. 1, Chap.128, Sec.9, Subd. 5(d), \$480,000 (\$400,000 acquisition & \$80,000 development) ; RIM Critical Habitat Match Funding, \$140,000 development.

E. Time: 3 years, until February 15, 2008.

VII. DISSEMINATION: Metro Corridors will periodically distribute information about the program through the widely broadcasted emails to people on the Regional Greenways Collaborative (RGC) database, through the RGC quarterly meetings, and jointly held county meetings. As projects are completed, the DNR SNA Program will publicize accomplishments through press releases, organization newsletters, public tours and websites, etc.

VIII. REPORTING REQUIREMENTS: Periodic work program progress reports will be submitted not later than February 1st and August 1st each year, starting with February 1st, 2006. A final work program report will be submitted by July 1st, 2008.

IX. RESEARCH PROJECTS: NA

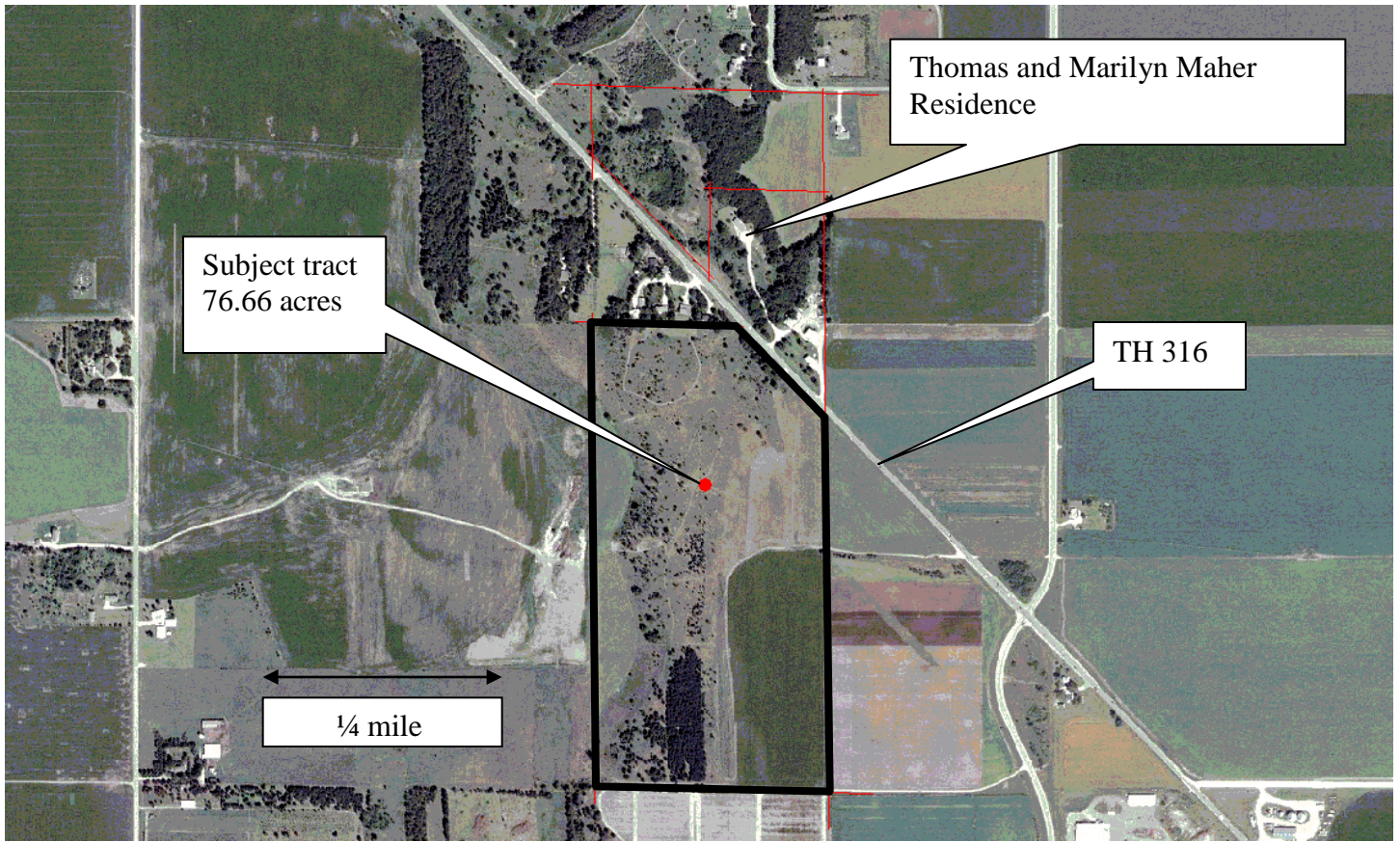
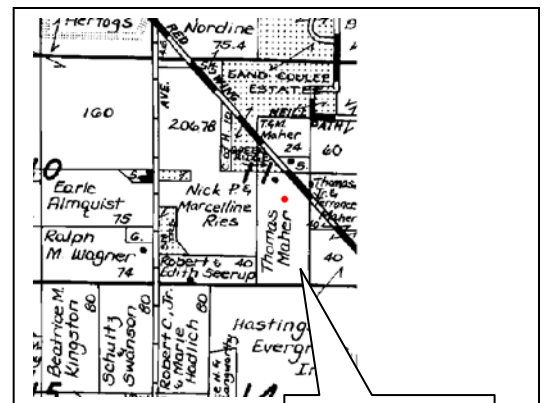
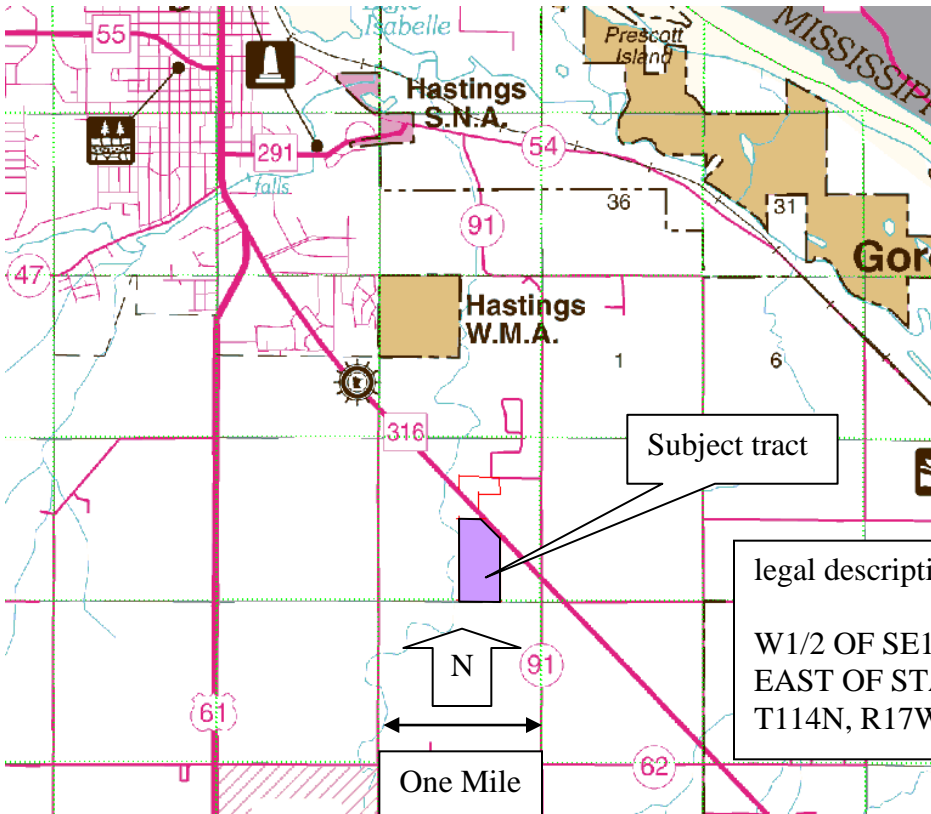


Exhibit B - Proposed SNA acquisition-Hastings Sand Coulee SNA

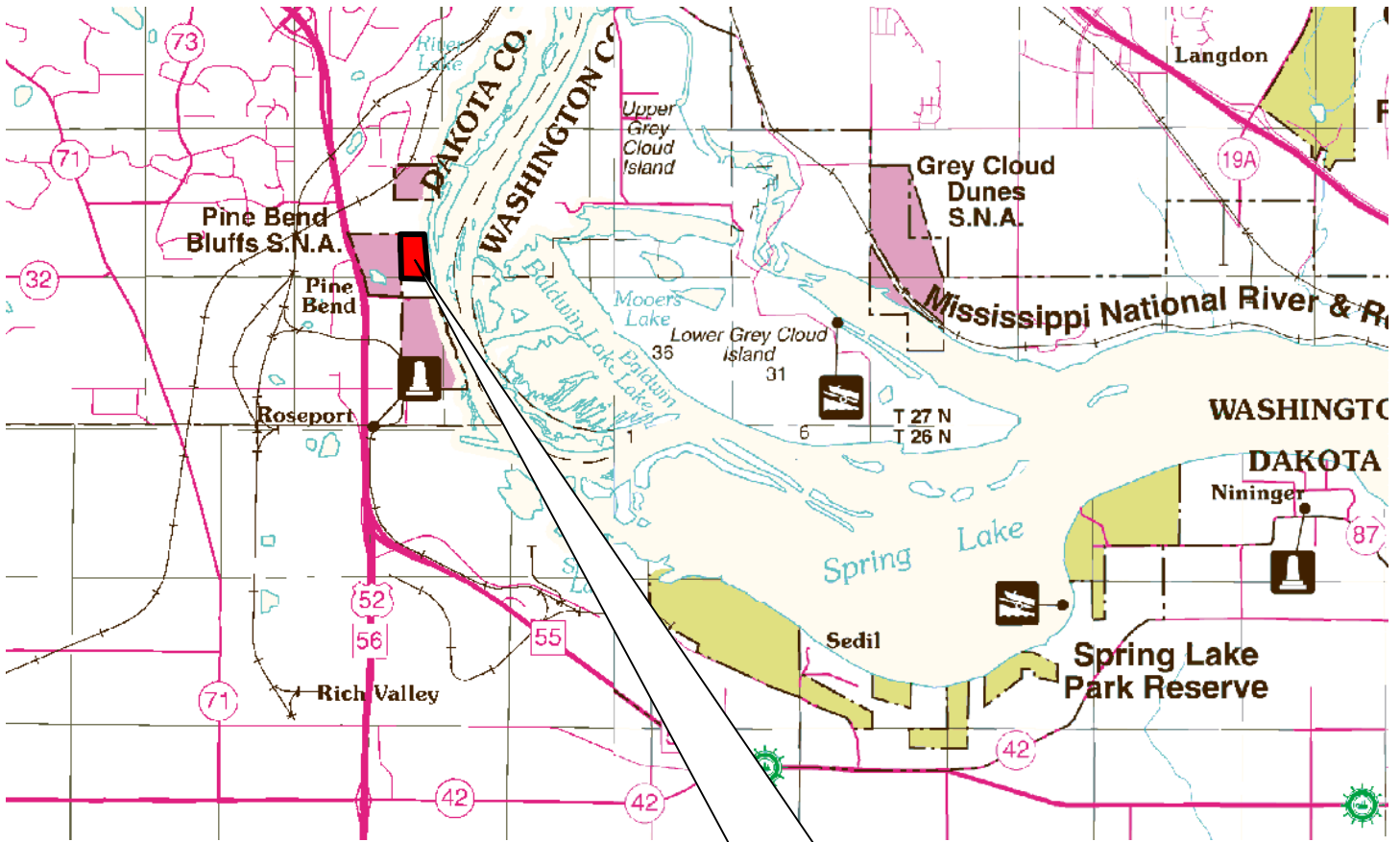
Maher tract in Section 11-114-17

76.7 acres –Dakota County PIN # 25.01100.012.76



legal description
 W1/2 OF SE1/4 EXCEPT PART LYING NORTH AND EAST OF STATE HIGHWAY 316, IN SECTION 11, T114N, R17W, DAKOTA COUNTY, MN

7/5/2006 lm



Subject 32 acre Polkinghorne tract at Pine Bend Bluff SNA Acq. 132580 In SESE Section 27-27-22

Lee Markell
December 11, 2006

Attachment A: Budget Detail for 2005 Metro Corridors Project

27-May-08

FINAL

Project Title: Scientific and Natural Areas Restoration and Enhancement (2.7) & Acquisition (3.6)

Project Manager Name: Peggy Booth

LCMR Requested D \$ 300,000

BUDGET ITEM	Result 1: Restoration			Result 2: Acquisition			TOTAL			Comments
	Amount Budgeted (\$)	Amount Spent (\$)	Balance (\$)	Amount Budgeted (\$)	Amount Spent (\$)	Balance (\$)	Amount Budgeted (\$)	Amount Spent (\$)	Balance (\$)	
PERSONNEL										
Staff expenses, wages, salaries, & benefits	\$ 32,619	\$ 32,619	\$ -				\$ 32,619	\$ 32,619	\$ -	Project crews (laborers and technicians paid almost exclusively with special project funds) to carry out restoration and enhancement, amounting to 3.0 FTE over the life of the project. Fringe varies from 14.8 -18%.
DEVELOPMENT										
Land improvement	\$ 16,426	\$ 16,426	\$ -				\$ 16,426	\$ 16,426	\$ -	Restoration, development, burning, site clean up, etc. estimated on 20 acres.
Travel expenses in Minnesota	\$ 954	\$ 954	\$ -				\$ 954	\$ 954	\$ -	This is only for crew travel associated with development
DEVELOPMENT - SUBTOTAL	\$ 17,381	\$ 17,381	\$ -				\$ 17,381	\$ 17,381	\$ -	
ACQUISITION										
Land acquisition (fee title & conservation easement)			\$ -	\$ 228,321	\$ 228,321	\$ (0)	\$ 228,321	\$ 228,321	\$ (0)	Fee title to land; estimated at 15 acres.
Land transaction costs (e.g. survey,			\$ -	\$ 21,679	\$ 21,679	\$ -	\$ 21,679	\$ 21,679	\$ -	
ACQUISITION - SUBTOTAL	\$ -	\$ -	\$ -	\$ 250,000	\$ 250,000	\$ (0)	\$ 250,000	\$ 250,000	\$ (0)	
TOTAL LCMR Funding *	\$ 50,000	\$ 50,000	\$ -	\$ 250,000	\$ 250,000	\$ (0)	\$ 300,000	\$ 300,000	\$ (0)	

* The total development amount is \$50,000; actual expenditures will reflect what percent is spent on crews hired for land improvement versus materials purchased for improvement. These will be reported separately in each status report.

2005 Project Abstract- Revised
For the Period Ending June 30, 2008

PROJECT TITLE: Metropolitan Area Wildlife Corridors Phase II –
The Trust for Public Land Critical Lands Protection Program (3.1)
PROJECT MANAGER: Cordelia Pierson
AFFILIATION: The Trust for Public Land
MAILING ADDRESS: 2610 University Avenue West, Suite 300,
CITY/STATE/ZIP: Saint Paul, MN 55114
PHONE: 651-917-2240
FAX: 651-917-2248
E-MAIL: Cordelia.pierson@tpl.org
WEBSITE: (If applicable) www.tpl.org
FUNDING SOURCE: Environment and Natural Resources Trust Fund
LEGAL CITATION: ML 2005, 1st Spec. Sess., Chap. 1, Art. 2, Sec. 11, Subd. 5b.
APPROPRIATION AMOUNT: \$ 620,000

Overall Project Outcome and Results

In its Critical Lands Protection Program, the Trust for Public Land (TPL) used \$620,000 of Environment and Natural Resources Trust Fund funds to secure fee title on approximately 166 acres. These funds leveraged an additional \$1,664,000 to secure fee title on an additional 727 acres. This effort secured a total of **893 acres** worth \$2,284,000 and conveyed them to public agencies for permanent protection. Individual protection successes include the following:

- TPL purchased 174 acres of land in the Twin Lakes habitat complex, including half a mile of shoreline on Horseshoe and Horseleg Lakes, and conveyed them to Isanti County for protection as an Isanti County regional park (**Horseshoe Lake**)
- TPL purchased 670 acres of land, including three miles of lakeshore and 450 acres of wetlands, in Chisago County. TPL conveyed the land to the Minnesota Department of Natural Resources (DNR) for management and protection as a joint Wildlife and Aquatic Management Area (**East Rush Lake AMA/WMA**)
- TPL purchased 49 acres of land in the St Croix Valley (Chisago County) and conveyed them to the DNR for management and protection as the **Franconia Bluffs Scientific and Natural Area**.

TPL leveraged \$620,000 in Environment and Natural Resources Trust Fund funding on these projects with **\$1,664,000 additional funds**, including the following:

- \$411,000 in non-state funding to protect 54 acres
- \$1,053,000 in state funding to protect 451 acres
- \$200,000 in MeCC funds contributed from partners to protect 222 acres

Project Results Use and Dissemination

TPL posted project information on the TPL website, www.tpl.org, in addition to DNR's posting at its web site. TPL included project descriptions in its newsletters, which are mailed to about 6,600 people, and worked with project partners to create and disseminate press releases for each of the projects. Articles were published in the *South Washington County Bulletin*, *North Branch Post Review*, and the *Isanti County News*. TPL sent an e-mail announcement to the Minnesota "TPL Near You" mailing list of approximately 1,200 email addresses, and provided information to Embrace Open Space for inclusion in its monthly e-newsletter (approximately 800 recipients). TPL worked with a nationally recognized photographer and Minnesota photographer to take photographs at two of the sites (Horseshoe – Peter Crouser; Franconia – Darcy Kiefel), and a staff photographer at the third site (East Rush Lake – Tom Evers). Land acquired has been or will be posted. Sample media materials are attached.

LCCMR 2005 Work Program Final Report

Date of Report: August 15, 2008 (Revised August 27, 2008)
LCCMR 2005 Work Program Final Report

I. PROJECT TITLE:

**Metropolitan Area Wildlife Corridors Phase II – The Trust for Public Land
Critical Lands Protection Program (3.1)**

Project Manager: Cordelia Pierson
Affiliation: The Trust for Public Land
Mailing Address: 2610 University Avenue West, Suite 300
City / State / Zip: Saint Paul, MN 55114
Telephone Number: 651-999-5312
E-mail Address: cordelia.pierson@tpl.org
FAX Number: 651-917-2248
Web Page address: www.tpl.org

Total Biennial LCMR Project Budget LCMR Appropriation: \$ 620,000

First year appropriation: \$310,000
Second year appropriation: \$310,000

Legal Citation: ML 2005, 1st Spec. Sess., Chap. 1, Art. 2, Sec. 11, Subd. 5b.

Appropriation Language: Metropolitan Area Wildlife Corridors – Phase II. \$1,765,000 the first year and \$1,765,000 the second year are from the trust fund to the commissioner of natural resources for the second biennium for acceleration of agency programs and cooperative agreements with the Trust for Public Land, Ducks Unlimited, Inc., Friends of the Mississippi River, Great River Greening, Minnesota Land Trust, Minnesota Valley National Wildlife Refuge Trust, Inc., Pheasants Forever, Inc. and Friends of the Minnesota Valley for the purposes of planning, improving, and protecting important natural areas in the metropolitan region, as defined by Minnesota Statutes, section 473.121, subdivision 2 and portions of the surrounding counties, through grants, contracted services, conservation easements, and fee acquisition. Land acquired with this appropriation must be sufficiently improved to meet at least minimum management standards as determined by the commissioner of natural resources. Expenditures are limited to the identified project areas as defined in the work program. This appropriation may not be used for the purchase of residential structures, unless expressly approved in the work program. Any land acquired in fee title by the commissioner of natural resources with money from this appropriation must be designated: (1) as an outdoor recreation unit under Minnesota Statutes, section 86A.07; or (2) as provided in Minnesota Statutes, sections 89.018, subdivision 2, paragraph (a); 97A.101; 97A.125; 97C.001; and 97C.011. The commissioner may similarly designate any lands acquired in less than fee title. This appropriation is available until June 30, 2008, at which time the project

must be completed and final products delivered, unless an earlier date is specified in the work program.

II. and III. FINAL PROJECT SUMMARY:

*In its Critical Lands Protection Program, the Trust for Public Land (TPL) used \$620,000 of Environment and Natural Resources Trust Fund funds to secure fee title on approximately 166 acres. These funds leveraged an additional \$1,664,000 to secure fee title on an additional 727 acres. This effort secured a total of **893 acres** worth \$2,284,000 and conveyed them to public agencies for permanent protection. Individual protection successes include the following:*

- *TPL purchased 174 acres of land in the Twin Lakes habitat complex, including half a mile of shoreline on Horseshoe and Horseleg Lakes, and conveyed them to Isanti County for protection as an Isanti County regional park (**Horseshoe Lake**)*
- *TPL purchased 670 acres of land, including three miles of lakeshore and 450 acres of wetlands, in Chisago County. TPL conveyed the land to the Minnesota Department of Natural Resources (DNR) for management and protection as a joint Wildlife and Aquatic Management Area (**East Rush Lake AMA/WMA**)*
- *TPL purchased 49 acres of land in the St Croix Valley (Chisago County) and conveyed them to the DNR for management and protection as the **Franconia Bluffs Scientific and Natural Area**.*

TPL leveraged \$620,000 in Environment and Natural Resources Trust Fund funding on these projects with \$1,664,000 additional funds, including the following:

- *\$411,000 in non-state funding to protect 54 acres*
- *\$1,053,000 in state funding to protect 451 acres*
- *\$200,000 in MeCC funds contributed from partners to protect 222 acres*

IV. OUTLINE OF PROJECT RESULTS:

Result 1: Acquire Significant Habitat

Description: The Trust for Public Land (TPL) secured fee title on 165 acres, protecting a total of 893 acres. These totals far exceeded the work program goals of 28 acres, with a total of 38 acres of valuable, high quality habitat protected. TPL applied all of the funding to the capital costs of land acquisition, and did not use any MeCC funding for transaction costs (appraisals, legal fees, surveys, environmental assessments, closings and agency expenses). All three of the protection projects resulted from overall Metropolitan Area Wildlife Corridors Project outreach and prioritizing based on resource mapping, stakeholder suggestions, and joint decisions made by the coalition of groups involved in this overall effort. Conservation efforts including landowner negotiations and education in the Twin Lakes and Franconia habitat areas continue in Phases III and IV of MeCC. These protection projects also represent instances in which TPL's help was solicited because of challenges to the public agency in accomplishing the conservation acquisition alone. Some of those

challenges included: large acreages; difficult and/or complex ownerships; a need for multiple funding sources; a high risk of development, and/or a short timeframe in which to work. The Trust for Public Land worked only with willing sellers. TPL transferred fee title to the appropriate, qualified public or private land steward, such as the Minnesota Department of Natural Resources (East Rush Lake and Franconia St. Croix, or a local government (Horseshoe Lake). TPL donated to the land steward the land value of the MeCC funds.

EAST RUSH LAKE WMA/AMA:

The Trust for Public Land acquired +/- 670 acres on East Rush Lake in Chisago County in late February 2006 for \$603,000, and conveyed it to the Department of Natural Resources Division of Fisheries and Wildlife for protection as a Wildlife Management Area and Aquatic Management Area. The Trust for Public Land, Metro Greenways, and Fisheries contributed \$100,000 each in Metro Conservation Corridor funding to the project and Wildlife contributed \$303,000 in Wildlife Management Area bond funds.

This wetland property is a significant riparian environment and has a direct effect on the ecological processes of the lake and a tributary of the St. Croix River. With three miles of shoreline, the site includes critical habitat for fish, amphibians, migratory waterfowl and other key game and non-game species. The open water, emergent/submergent vegetation, and surrounding cover provide food material and habitat for small fish and invertebrates used by puddle ducks, divers, mergansers and wading birds. The site is also a very important area for migrating birds as well, including Tundra and Trumpeter Swans, Old Squaw, Scoters, canvasbacks, ring-necked ducks and other divers. The Minnesota County Biological Survey identified roughly 450 of the 670 acres as being very high quality wetlands, including tamarack swamp, shrub swamp, mixed hardwood swamp, and emergent marsh. Because of its location at the headwaters of Rush Creek, which is a tributary to the Wild and Scenic St. Croix River – a National Scenic Riverway – this large wetland complex performs significant water quality functions to an important watershed. This site provides the public excellent opportunities for plant and wildlife viewing, hunting (duck, turkey, grouse and deer) and fishing within an hour’s drive of the Twin Cities.

The Department of Natural Resources asked the Trust for Public Land to assist in protecting this site; as DNR Wildlife manager Dave Pauly said, “this acquisition sets aside increasingly scarce public hunting lands close to where most Minnesotans live. ... It is especially important that we continue to set aside such places in rapidly growing areas such as Chisago County, where natural resources are attracting development that in turn threatens the natural resources. Projects like these help break that cycle and assure a lasting quality of life.”

Partner on East Rush	Funding Source	Funding – committed for	Allocated Acreage	Notes
----------------------	----------------	-------------------------	-------------------	-------

Lake project		land acquisition costs		
TPL	Metro Wildlife Corridors-ETF	\$100,000	111	Lead
DNR Fisheries and Wildlife	Metro Wildlife Corridors-ETF	\$100,000	111	
Metro Greenways	Metro Wildlife Corridors-ETF	\$100,000	111	
DNR Wildlife	Bonding	\$303,000	337	
TOTAL		\$603,000	670	

HORSESHOE LAKE:

The Trust for Public Land acquired +/- 174 acres on Horseshoe and Horseleg lakes in Isanti County for \$1,156,100, and conveyed it to Isanti County on May 23, 2007, for protection as a county regional park, the first protection success in the high priority Twin Lakes area of Oxford Township, Isanti County.

This project resulted from county-level outreach meetings convened by Metro Conservation Corridors partners and the DNR Ecological Services Division selecting the Twin Lakes area as a high priority for increasing conservation. In working with landowners in the area and local government leadership, the MeCC partners determined that the Horseshoe and Horseleg lakes site would make an excellent first conservation success in the area, with the county providing leadership as the permanent land steward, and with the DNR likely playing a greater future role on stewardship of other sites. Horseshoe Lake is used by DNR Fisheries to rear walleye fry; its shallow depth provides winter kill, which actually helps maintain the wildlife qualities by reducing minnow and bullhead populations which compete with waterfowl for invertebrates and other food sources.

The dry prairie, non-forested wetland and shallow lake habitats on this particular site provide key habitats for species of greatest conservation need, and the dry oak forest and oak savanna complement those habitats. Birds sighted on the property and listed on the state species in greatest conservation need include American Bittern, American Woodcock, Bald Eagle, Black Tern, Black-billed Cuckoo, Brown Thrasher, and Yellow-bellied Sapsucker. Mammal and reptile species of greatest conservation need that breed on or use the site include Blandings Turtles, Badgers, Western Hognose Snakes, and Mink Frogs.

The project protects nearly half a mile of shoreline on Horseshoe and Horseleg Lakes, which are shallow, low alkalinity lakes ideal for wildlife uses, with good submerged vegetation and maximum depth between seven and eight feet. The site is in the Anoka Sand Plain, characterized by sandy, highly permeable soils. The two lakes are perched, with a small watershed feeding them, and have no surface water outlet; they likely recharge the groundwater supplying local residents' drinking water.

Site protection will contribute to improving surface water quality, protecting drinking water quality and quantity, preventing flooding, and stabilizing soil.

Partner on Horseshoe Lake project	Funding Source	Funding for land acquisition costs	Allocated Acreage	Notes
TPL	Metro Wildlife Corridors-ETF	\$100,000	15.75	Lead
Isanti County	County park funds	\$296,000	43.5	
Oxford Township	Township funds	\$10,000	1	
Metro Greenways	Metro Wildlife Corridors (ETF) or bonding	\$100,000	15.75	
DNR Remediation Fund Program	Remediation Fund	\$500,000	75	
DNR Regional Park Program	Bonding	\$150,000*	23	
TOTAL		\$1,156,000	174	

FRANCONIA ST. CROIX BLUFFS SCIENTIFIC AND NATURAL AREA (SNA):

TPL acquired +/- 49 acres above the St. Croix River in Chisago County, and conveyed it to the DNR for management as an SNA. The land provides a critical ecological connection from the St. Croix bluffs to St. Croix National Scenic Riverway lands on the St. Croix River owned by the National Park Service.

Following Metro Conservation Corridors county outreach and prioritization meetings, Metro Conservation Corridors partners and the DNR Ecological Services Division identified as a top priority for conservation a six-mile stretch along the St. Croix River from Taylor’s Falls to Scandia, known as Franconia Scandia Corridor, including Lawrence Creek, seepage swamps, cliffs, prairies and pine forests. Half the area – primarily in the floodplain – is owned by the National Park Service, but the bluffs and uplands were increasingly vulnerable to over-development, habitat fragmentation, erosion and invasive species. The area contains a rich diversity of native plant communities and supports many rare bird species such as the Coopers Hawk and cerulean warbler. The high ecological quality of the area warranted creating a new Scientific and Natural Area in the corridor.

This site will receive the highest ecological protections for its outstanding biological diversity, rare habitats and geological features, and will be open to the public for passive activities such as birding, wildlife watching, viewing wildflowers, hiking, education and scientific research.

Partner on Franconia St. Croix Bluffs SNA project	Funding Source	Funding for land acquisition costs	Allocated Acreage	Notes
TPL	Metro Wildlife Corridors Phase II 2005-ETF	\$420,000	38.5	Lead
TPL	Metro Wildlife Corridors Phase III 2007-ETF	\$10,000	.9	
	Land Value Donation	\$105,000	9.6	
TOTAL		\$535,000	49	

Summary Budget Information for Result 1: LCMR Budget \$ 620,000
Funds Spent \$ 620,000

TOTAL LCMR PROJECT BUDGET:

All Results: Personnel: \$ 0

All Results: Equipment: \$ 0

All Results: Development: \$ 0

All Results: Acquisition: \$ 620,000 (Capital costs - includes fee title or easement acquisition; land transaction costs - title, survey, environmental assessment, appraisal)

All Results: Other: \$ 0

V. TOTAL LCMR PROJECT BUDGET: \$ 620,000

Explanation of Capital Expenditures Greater Than \$3,500: NA

VI. PAST, PRESENT AND FUTURE SPENDING

A. Past Spending: For Phase 2, the Trust for Public Land provided a significant in-kind contribution to development of the project, including serving on the Executive Committee, helping shape the initial proposal, contributing to partner and stakeholder communications, participating in stakeholder meetings held in June 2004 and September - October 2004, soliciting land acquisition project proposals, and helping lay the groundwork for project initiation in July 2005. Total in-kind contribution from July 2003 to date is equivalent to 1/8 FTE.

During the Phase 1 project term (July 2003 – June 2005), the Trust for Public Land leveraged the following non-state funding:

City of Eagan: \$720,000 (Eagan Core Greenway – Caponi)

Dakota County: \$850,000 (Eagan Core Greenway – Caponi); \$1,000,000 (Vermillion River WMA/AMA)

Federal - state wildlife grants: \$275,000 (Gordie-Mikkelson Wildlife Management Area); \$800,000 (Vermillion River WMA/AMA)

Other non-Metro Wildlife Corridors state funding includes:

Natural and Scenic Area grant: \$200,000 (Eagan Core Greenway – Caponi)

Remediation Fund grant: \$300,000 (Eagan Core Greenway – Caponi)

Metro Greenways: \$450,000 (Gordie-Mikkelson Wildlife Management Area)

The Trust for Public Land provided technical assistance and private funding to add 17 acres to the Pine Bend Bluffs Scientific and Natural Area in the Lower Mississippi focus area, in partnership with DNR Scientific and Natural Area Program, Metro Greenways, and Friends of the Mississippi River.

From 2002 until Phase 1 initiation in July 2003, TPL provided a significant in-kind contribution to development of the project, including shaping the initial proposal, facilitating partner and stakeholder communications, arranging stakeholder meetings held in October 2002, printing maps and producing project descriptions for stakeholder participation, organizing proposed focus area meetings held in March 2003, soliciting land acquisition project proposals, and laying the groundwork for project initiation in July 2003. Total in-kind contribution by July 2003 is equivalent to ¼ FTE. TPL has also invested land acquisition capital of \$50,000 to help the DNR purchase land in Dec. 2002 in the Lower Mississippi focus area for the new Pine Bend Bluffs Scientific and Natural Area, where restoration funds from other partners for this project are being invested.

B. Other Funds being Spent during the Project Period: The Trust for Public Land leveraged far more than the \$180,000 in public and private funds described in the work program, with a total of \$411,000 in nonstate funding; \$1,053,000 in state funding; and \$200,000 with other MeCC partners, for **a total of \$2,284,000.**

Project cooperators and supporters, in addition to project partners, include:

- Landowners
- Isanti County and Chisago County
- Oxford Township
- Nonprofit organizations and citizen groups advancing land conservation, including lake associations
- Foundations, corporations, and individuals contributing to land conservation
- National Park Service – St. Croix National Scenic Riverway

As needed to complete land protection projects, the Trust for Public Land worked with project cooperators to secure state bonding funds and other state funds from programs such as the Local Initiative Grant Program (Natural and Scenic Area Grants and Regional Nonmetro Park Grants), Remediation Fund Grant Program,

Metro Greenways, DNR Wildlife, DNR Fisheries, DNR Scientific and Natural Areas, and other bonding appropriations for land protection.

C. Future Spending: The Trust for Public Land anticipates that projected needs total over \$30,000,000 a year for 25 years to meet land protection and restoration goals in the growing metro Conservation Corridor area.

VII. PROJECT PARTNERS

Project partners in Phase II included Isanti County, Oxford Township and Chisago County; DNR Wildlife and Fisheries; DNR Ecological Services and Scientific and Natural Area program; Minnesota Land Trust; the National Park Service – St. Croix National Scenic Riverway; and several local conservation supporters in both Isanti and Chisago counties, including lake association members and St. Croix Conservation Collaborative participants. The Trust for Public Land coordinated its work with other LCCMR-funded partners of the Metropolitan Area Conservation Corridor Project. The Trust for Public Land conveyed title to Isanti County and the Department of Natural Resources. The Trust for Public Land contracted with entities providing real estate transaction services such as environmental consultants, appraisers and title companies.

VIII. DISSEMINATION

TPL posted project information on the TPL website, www.tpl.org, in addition to DNR's posting at its web site. TPL included project descriptions in its newsletters, which are mailed to about 6,600 people, and worked with project partners to create and disseminate press releases for each of the projects. Articles were published in the *South Washington County Bulletin*, *North Branch Post Review*, and the *Isanti County News*. TPL sent an e-mail announcement to the Minnesota "TPL Near You" mailing list of approximately 1,200 email addresses, and provided information to Embrace Open Space for inclusion in its monthly e-newsletter (approximately 800 recipients). TPL worked with a nationally recognized photographer and Minnesota photographer to take photographs at two of the sites (Horseshoe – Peter Crouser; Franconia – Darcy Kiefel), and a staff photographer at the third site (East Rush Lake – Tom Evers). Land acquired has been or will be posted. Sample media materials are attached.

IX. Intentionally deleted

X. REPORTING REQUIREMENTS

Periodic work program progress reports were submitted in February and August of each year, starting with February 2006. A final work program report is submitted here.

XI. RESEARCH – NA

Attachment A: Budget Detail for 2005 Metro Corridors Project

Date: August 27, 2008

Title: Metropolitan Area Wildlife Corridors Phase II – The Trust for Public Land Critical Lands Protection Program (3.1)

Partner Project Manager Name: Cordelia Pierson

LCMR Dollars: \$620,000

BUDGET ITEM	Amount Budgeted (\$)	Amount Spent (\$)	Balance (\$)	Comments
ACQUISITION				
Land acquisition (<i>fee title</i>)*	\$620,000	\$620,000	\$0	To protect +/- 670 acres on East Rush Lake in Chisago County, with additional funding from Wildlife bonding and other Metro Corridors partners and funding; to protect +/- 174 acres on Horseshoe and Horseleg lakes in Isanti County, with additional funding from Isanti County, Oxford Township, DNR Metro Greenways, DNR Remediation, and DNR Regional Nonmetro Parks; to protect +/- 49 acres at Franconia St. Croix Bluffs (Franconia SNA), with additional funding from private donation and Phase III MeCC funding (TPL).
ACQUISITION - SUBTOTAL	\$620,000	\$620,000	\$0	
TOTAL LCMR Funding	\$620,000	\$620,000	\$0	

2005 Project Abstract

For the Period Ending June 30, 2008

TITLE: Metropolitan Area Wildlife Corridors – Phase II
Protecting Significant Habitat by Acquiring Conservation Easements - 3.2

PROJECT MANAGER: Jane Prohaska, President

ORGANIZATION: Minnesota Land Trust

ADDRESS: 2356 University Avenue West, Suite 240
St. Paul, MN 55114

WEB SITE ADDRESS: www.mnland.org

FUND: Environmental and Natural Resources Trust Fund

LEGAL CITATION: ML 2005, First Special Session, Chapter 1, Article 2, Sec. 11, Subd. 5(b)

APPROPRIATION AMOUNT: \$230,000

OVERALL PROJECT OUTCOME AND RESULTS

During the second phase of the Metro Corridors project, the Minnesota Land Trust continued to work with landowners throughout the greater metropolitan region to permanently protect lands that are key components of Minnesota's remaining natural areas in the region. Contact was initiated with approximately 30 landowners and 10 perpetual conservation easements were completed. Collectively, these conservation easements protect 526 acres of land and more than 3,910 feet of shoreline. Two easements were purchased, one at a bargain price. The remaining 8 easements were donated.

An additional seven easements protecting 298 acres of land in conservation-oriented residential developments also were completed. The general locations of our completed projects are identified on the attached map.

These conservation easements (not counting the conservation developments) have a known value that exceeds \$1,690,000, with a known donated value of more than \$1,361,000. The cost to the State of Minnesota under this grant to complete these projects was just over \$800 per acre (other State funds came from the Metro Greenways program to purchase one of the easements).

Additionally, the Land Trust prepared baseline property reports for each easement, detailing the condition of the property for future monitoring and enforcement. To fund this required perpetual obligation, the Land Trust dedicated funds to its segregated Stewardship and Enforcement Fund.

The Land Trust's work on this project demonstrates the cost effectiveness of working with conservation easements to protect natural and scenic resources within developed and developing areas, as the cost to the State was well below the cost to purchase land in the Twin Cities region. This grant continued to generate interest among landowners, and therefore, ongoing funding will be important to sustained success. Additionally, the Land Trust's experience with this grant also demonstrated that funds to purchase easements likely will be necessary in the future if land values continue to escalate and work becomes more targeted and selective.

PROJECT RESULTS USE AND DISSEMINATION

The Land Trust continued to gain more experience with conservation easements, easement management, and issues unique to protecting land in a metropolitan area. This experience and information was shared with our partner organizations, other easement holders, local communities, as well as policy makers.

The Land Trust disseminated information about the specific land protection projects completed under this grant through our newsletter, annual report, web site, and press releases.

LCCMR 2005 Work Program Final Report

Date of Report: June 30, 2008
LCCMR 2005 Work Program Final Report

I. PROJECT TITLE: Metropolitan Area Wildlife Corridors – Phase II
Protecting Significant Habitat by Acquiring Conservation
Easements - 3.2

Project Manager: Jane Prohaska
Affiliation: Minnesota Land Trust
Mailing Address: 2356 University Avenue West
City / State / Zip : St. Paul, MN 55114
Telephone Number: 651.647.9590
E-mail Address: jprohaska@mnland.org
FAX Number: 651.647.9769
Web Page address: www.mnland.org

Location: Mapped areas within the counties of Anoka, Carver, Chisago, Dakota, Goodhue, Hennepin, Isanti, Le Sueur, Nicollet, Ramsey, Rice, Scott, Sherburne, Sibley, and Washington.

Total Biennial LCMR Project Budget:	LCMR Appropriation:	\$230,000
	Amount Spent:	\$230,000
	Balance:	\$ 30

Legal Citation: ML 2005, 1st Special Session, Chapter 1, Article 2, Section 11, Subdivision 5b.

Appropriation Language: Metropolitan Area Wildlife Corridors – Phase II. \$1,765,000 the first year and \$1,765,000 the second year are from the trust fund to the commissioner of natural resources for the second biennium for acceleration of agency programs and cooperative agreements with the Trust for Public Land, Ducks Unlimited, Inc., Friends of the Mississippi River, Great River Greening, Minnesota Land Trust, Minnesota Valley National Wildlife Refuge Trust, Inc., Pheasants Forever, Inc. and Friends of the Minnesota Valley for the purposes of planning, improving, and protecting important natural areas in the metropolitan region, as defined by Minnesota Statutes, section 473.121, subdivision 2 and portions of the surrounding counties, through grants, contracted services, conservation easements, and fee acquisition. Land acquired with this appropriation must be sufficiently improved to meet at least minimum management standards as determined by the commissioner of natural resources. Expenditures are limited to the identified project areas as defined in the work program. This appropriation may not be used for the purchase of residential structures, unless expressly approved in the work program. Any land acquired in fee title by the commissioner of natural resources with money

from this appropriation must be designated: (1) as an outdoor recreation unit under Minnesota Statutes, section 86A.07; or (2) as provided in Minnesota Statutes, sections 89.018, subdivision 2, paragraph (a); 97A.101; 97A.125; 97C.001; and 97C.011. The commissioner may similarly designate any lands acquired in less than fee title. This appropriation is available until June 30, 2008, at which time the project must be completed and final products delivered, unless an earlier date is specified in the work program.

II. and III. FINAL PROJECT SUMMARY:

During the second phase of the Metro Corridors project, the Minnesota Land Trust continued to work with landowners throughout the greater metropolitan region to permanently protect lands that are key components of Minnesota's remaining natural areas in the region. Contact was initiated with approximately 30 landowners and 10 perpetual conservation easements were completed. Collectively, these conservation easements protect 526 acres of land and more than 3,910 feet of shoreline. Two easements were purchased, one at a bargain price. The remaining 8 easements were donated.

An additional seven easements protecting 298 acres of land in conservation-oriented residential developments also were completed. The general locations of our completed projects are identified on the attached map.

These conservation easements (not counting the conservation developments) have a known value that exceeds \$1,690,000, with a known donated value of more than \$1,361,000. The cost to the State of Minnesota under this grant to complete these projects was just over \$800 per acre (other State funds came from the Metro Greenways program to purchase one of the easements).

Additionally, the Land Trust prepared baseline property reports for each easement, detailing the condition of the property for future monitoring and enforcement. To fund this required perpetual obligation, the Land Trust dedicated funds to its segregated Stewardship and Enforcement Fund.

The Land Trust's work on this project demonstrates the cost effectiveness of working with conservation easements to protect natural and scenic resources within developed and developing areas, as the cost to the State was well below the cost to purchase land in the Twin Cities region. This grant continued to generate interest among landowners, and therefore, ongoing funding will be important to sustained success. Additionally, the Land Trust's experience with this grant also demonstrated that funds to purchase easements likely will be necessary in the future if land values continue to escalate and work becomes more targeted and selective.

IV. OUTLINE OF PROJECT RESULTS:

Result 1: Protecting Significant Habitat by Acquiring Conservation Easements - 3.2

Description:

Protect critical habitat in various counties in the focus area by:

- Accepting permanent conservation easements on up to 250 acres of land.
- Dedicating funds for the perpetual monitoring, management and enforcement of the easements.

Summary Budget Information for Result 1:	LCMR Budget:	\$230,000
	Spent:	\$230,000
	Balance:	\$ 30

Completion Date: June 30, 2008

Final Report Summary:

The Land Trust is pleased that we were able to far exceed our project goals by completing 10 conservation easements protecting 526 acres of land and more than 3,900 feet of shoreline.

We believe our results demonstrate that conservation easements continue to be an incredibly cost effective way to protect natural lands in the Twin Cities Metropolitan Area, as the cost to the State of Minnesota was just over \$800 per acre.

At the end of our 2003 grant we reported that an increasing amount of our work in the metropolitan region was directly related to working with local communities and developers as they looked for ways to combine the need for residential housing with their desire to protect natural resources and preserve community character through conservation developments. Our work with conservation developments continued through the first two years of this 2005 grant, and in addition to the easements reported above, we also completed seven conservation easements that protect 298 acres of land in five residential conservation developments in Washington County. In the conservation development projects all the costs were covered by the developers, but the nearly 300 acres of land protected that resulted from these projects greatly enhances the protection provided by Environmental Trust Fund funding. With the recent decline in the housing market, our work with conservation developments fell off sharply in 2007, and we do not expect to return to the prior level of activity for some time.

Our average parcel size was approximately 52 acres for parcels completed under this grant (not counting parcels within developments). This represents a slight increase in average parcel size from our 2003 grant, which we believe is due to the fact that many of our projects were located in “collar counties” rather than “core counties.” It is important to note, however, that this average size of Metro projects is still half the size of average Minnesota Land Trust projects, meaning that it is more expensive to protect land in the Metro area.

And finally, we continue to encounter a greater number of landowners who cannot

afford to donate the value of the development rights they are willing to give up. This means that while conservation easements remain a cost effective land protection tool, they nevertheless will be more expensive in the future and more funding will be necessary to protect the same amount of land.

All of the projects completed by the Land Trust under this project are discussed in detail below and also are summarized on the attached map.

Descriptions and Results by Areas:

Northwest Area: Sherburne, Isanti and Anoka Counties

Acres protected: 173

Easements completed: 3

We completed two easements at the Tamarack Big site covering approximately 158 acres of land in Sherburne County not far from the Sherburne National Wildlife Refuge. The land features a large tamarack bog that provides habitat for species such as the sandhill crane.

We also completed one easement in Anoka County that adding 15 acres of land to an existing 65-acre easement. This project is directly adjacent to the Lamprey Pass Wildlife Management Area and provides an important buffer to the WMA from the increasing surrounding development.

Central Area: Hennepin and Ramsey Counties

Acres protected: 27

Easements completed: 2

We completed two conservation easements in western Hennepin County, one in the City of Orono and one in the City of Medina. The Tomann Park site is a 16-acre parcel that includes wetlands and open areas. The landowner intends to give the land to the City of Medina for a future city passive nature park.

The Long Lake project protects 11 acres of open space and wetlands that flow directly into Long Lake via Long Lake Creek. The property is located within a corridor that also includes Wood-Rill SNA and Wolsfeld Woods SNA.

East Area: Chisago and Washington Counties

Acres protected: 79

Easements completed: 1

This project protects 80 acres of high-quality, mixed hardwood forest adjacent to Wild River State Park in Chisago County. This easement was purchased at a bargain price using funds from the DNR's Metro Greenways program. The property also is adjacent to another property protected by a Minnesota Land Trust easement and represents the sixth project completed at the Wild River State Park site.

In addition, we completed seven conservation easements associated with five conservation development projects in Washington County. The developments are located in Baytown Township, Afton, Lake Elmo, Bayport, and Stillwater and together protect a total of 298 acres of open space. For all conservation development projects, the costs associated with completing the project were covered by the developers.

Southwest Area: Carver, Scott, Sibley, LeSueur, Nicollet Counties

Acres protected: 67
Easements completed: 2

We completed two easements with landowners from the same family at the High Island Creek site in Sibley County. Together, these two projects protect 67 acres of land. A deep valley and forested bluffs make these properties very scenic. Additionally, High Island Creek runs along the boundary of one of the properties.

Southeast Area: Dakota and Goodhue Counties

Acres protected: 180
Easements completed: 2

The Red Wing project in Goodhue County adds 100 acres of protected land to an adjacent 2,700-acre property protected previously by the Minnesota Land Trust. The property consists primarily of floodplain forest and emergent marsh native plant communities, which provide habitat for a variety of birds including bald eagles, herons, and egrets.

The Bullard Creek project involved purchasing a conservation easement to protect 80 acres of land along Bullard Creek in Goodhue County. Bullard Creek is a Minnesota DNR-designated trout stream. While a portion of the property is used for agriculture, the land also includes native prairie and forest. The project is located just outside of Red Wing and lies within a scenic bluffland corridor.

V. TOTAL LCMR PROJECT BUDGET:

	<u>Final</u>
All Results: Personnel:	\$ 30,400
All Results: Acquisition:	\$149,100
All Results: Other-Travel:	\$ 1,500
All Results: Other-Easement Stewardship:	\$ 49,000
TOTAL LCMR PROJECT BUDGET:	\$230,000

VI. OTHER FUNDS & PARTNERS:

A. Project Partners: See overall proposal and report.

B. Other Funds being spent during the Project Period: By working to acquire donated conservation easements, the Minnesota Land Trust has been able to protect lands at a fraction of what it would cost to purchase comparable lands in fee. This funding leverages millions of dollars of value in easements on lands protected through this grant. Additional funds have been spent by the Minnesota Land Trust to cover costs associated with the project not covered by the grant.

C. Required Match (if applicable): NA

D. Past Spending: In past years, the Minnesota Land Trust has expended substantial financial resources to secure conservation easements in the project areas of this grant. This includes a \$230,000 2003 grant from LCMR for Phase 1 of the Metropolitan Area Wildlife Corridors project.

The donated conservation easements accepted by the Land Trust during these two grants are worth millions of dollars.

E. Time: 3 years, until June 30, 2008.

VII. DISSEMINATION: Metro Corridors will periodically distribute information about the program through the widely broadcasted emails to people on the Regional Greenways Collaborative (RGC) database, through the RGC quarterly meetings, and jointly held county meetings. As projects are completed, results will be disseminated by the Minnesota Land Trust in our publications and on our web page (www.mnland.org). We will work to publicize completed projects in the media, targeting communities in which the lands are located.

VIII. REPORTING REQUIREMENTS: Periodic work program progress reports were submitted not later than February 1, 2006, August 1, 2006, February 1, 2007, August 1, 2007, and February 1, 2008. A final work program report will be submitted by July 1, 2008.

IX. RESEARCH PROJECTS: NA

Minnesota Land Trust Completed Projects LCCMR Metro Corridors Phase II

Audubon: This 38-acre site in Washington County includes two protected parcels that provide open space for the Audubon conservation development in Bayport. The protected land features woodlands, open fields and wetlands in close proximity to the Bayport Wildlife Management Area and the St. Croix Savanna Scientific and Natural Area. The development will consist of 39 single-family homes on 31 acres near the protected land.

Bullard Creek: This 80-acre property in Goodhue County is located near the City of Red Wing. Bullard Creek (a DNR designated trout stream) is located on the south side of the property, where it essentially begins its run to the Mississippi River. The northern portion of the property is forest and native prairie.

Cedar Bluff Homestead: This project in Washington County protects 72 acres of land adjacent to the Cedar Bluff Homestead residential development in Afton. The preservation of the woodlands and grasslands on the property will help maintain wildlife habitat and plant communities in a developing area.

Farms of Lake Elmo: The 47 acres of protected property in this conservation development in Lake Elmo include woodlands, open fields, ponds and wetlands bordered by the Lake Elmo Regional Park Preserve. The Farms of Lake Elmo development will consist of 33 single-family homes on 25 acres adjacent to the protected land.

High Island Creek: These two projects in Sibley County protect 67 acres of land. High Island Creek runs along the western border of one of the projects. The deep valley and rolling forested bluffs of the properties make this particular area very scenic. The forests and grassland of the properties provide the only respite in the area for terrestrial wildlife and plants that cannot survive in a landscape dominated by cultivated land.

Lamprey Pass: This 15-acre property in Anoka County is adjacent to approximately 65 acres already protected by a conservation easement. The property also is adjacent to Lamprey Pass WMA and helps buffer the wildlife area from surrounding development.

Miller Farms: This 89-acre property in Washington County consists of woodlands, open fields and wetlands that provide open space for the adjacent Miller Farms residential development. The protected land also is near the Bayport WMA and in close proximity to the St. Croix Savanna SNA.

Long Lake: This 11-acre property in Hennepin County consists primarily of wetlands that flow directly into Long Lake, a 320-acre lake. The property lies within the Lake Minnetonka Area Greenway and is located near the Wolsfeld Woods SNA and the Wood-Rill SNA.

Red Wing: This 100-acre project in Goodhue County is adjacent to 2,700 acres of land that have already been protected by a conservation easement held by the Land Trust. The protected land is dominated by floodplain forest and emergent marsh native plant communities. Numerous rare species have been identified in this area. A heron and egret rookery and bald eagle nest are also located on the property.

Tamarack Bog: This 158-acre site in Sherburne County near Elk River includes two parcels of protected land located in close proximity to the Sand Dunes State Forest and the Sherburne National Wildlife Refuge. The protected land is mostly grassland and includes a large tamarack bog.

Tomann Park: This 16-acre parcel in Hennepin County near Medina includes a small pond, a cattail marsh and open land. The landowner has planted a wide variety of trees on the property and intends for it to be a future City of Medina park.

Victory Pass: This 52-acre site in Washington County includes two parcels that provide open space for the Victory Pass conservation development in Stillwater. The protected property consists of open fields, wetlands, grass meadows and cultivated land. The Victory Pass development will consist of 11 single-family homes located on 28 acres adjacent to the protected land.

Wild River State Park: This 79-acre project in Chisago County adjacent to Wild River State Park consists of mixed hardwood forest that lies within a larger block of natural oak forest. Approximately 5,000 trees have been planted on the property over the past 10 years, mostly Norway and White Pine.

Minnesota Land Trust

Completed Projects

LCCMR Metro Corridors Phase II



June 2008

Attachment A: Budget Detail for 2005 Metro Corridors Project-Phase 2, Minnesota L

Project Title: Protecting Significant Habitat by Acquiring Conservation Easements-3

Project Manager Name: Jane Prohaska

BUDGET ITEM	Second Amended Budget	Approximate Amount Spent as of 6/30/08
PERSONNEL		
Staff expenses, wages, salaries, & benefits	\$30,400.00	\$ 30,400.00
ACQUISITION		
Land acquisition transaction costs		\$ 149,070.00
ACQUISITION - SUBTOTAL	\$ 149,100.00	\$ 149,070.00
OTHER		
Easement stewardship	\$49,000.00	\$ 49,000.00
Travel expenses in Minnesota	\$ 1,500.00	\$ 1,500.00
OTHER - SUBTOTAL	\$50,500.00	\$ 50,500.00
TOTAL LCMR Funding	\$ 230,000.00	\$ 229,970.00

2005 Project Abstract

For the Period Ending June 30, 2008

TITLE: Metropolitan Area Wildlife Corridors – Phase II: 3.3 - Fee acquisition of significant habitat in the Minnesota River Valley.

PROJECT MANAGER: Deborah Loon

ORGANIZATION: Minnesota Valley National Wildlife Refuge Trust, Inc.

ADDRESS: 2312 Seabury Avenue, Minneapolis MN 55406

WEB SITE ADDRESS: NA

FUND: Minnesota Environment and Natural Resources Trust Fund

LEGAL CITATION: ML 2005, 1st Spec. Sess., Chap. 1, Article 2, Sec. 11, Subd. 5b.

APPROPRIATION AMOUNT: \$ 230,000

Overall Project Outcome and Results

The Minnesota Valley National Wildlife Refuge Trust, Inc. completed fee title acquisition on July 28, 2006 of approximately 174 acres of significant habitat in the Minnesota River Valley within the County of Sibley. The tract consists of 15 acres of oak savanna, 16 acres of high quality wet prairie, 97 acres of floodplain forest and 46 acres of cropland.

The oak savanna is located in the floodplain of the Minnesota River, which is very rare. The oak trees in the floodplain will provide an important seed source for future oak plantings in higher sections of the floodplain. The wet prairie is very high quality with numerous species of plants. This property will provide an important parcel of connecting forest and prairie habitat in the Minnesota River bottoms. It will benefit many species of wildlife including wood ducks, mallards, bald eagles, grassland nesting birds as well as numerous resident game species such as turkeys and deer. The tract also contains numerous oxbow wetlands.

The land will be donated to the US Fish and Wildlife Service for management by the Minnesota Valley National Wildlife Refuge.

Project Results Use and Dissemination

The Minnesota Valley Trust will publicize the completion of this acquisition and plans for the lands through its newsletter and news releases to the local media. After the land is donated to the Minnesota Valley Refuge, the USFWS will publicize progress on the restoration efforts, development of trails and opportunities for public use and environmental education through news releases and updates to its website. All funding partners will be acknowledged on Refuge kiosks, including the Environment and Natural Resources Trust Fund, as recommended by the Legislative Commission on Minnesota Resources.

LCMR Final Work Program Report

Date of Report: August 1, 2006

Date of Next Status Report: NA

Date of Work program Approval: June 14, 2005

Project Completion Date: June 30, 2008

I. PROJECT TITLE: Metropolitan Area Wildlife Corridors – Phase II – 3.3: Fee acquisition of significant habitat in the Minnesota River Valley.

Project Manager: Deborah Loon

Affiliation: Minnesota Valley National Wildlife Refuge Trust, Inc.

Mailing Address: 2312 Seabury Avenue

City / State / Zip: Minneapolis, MN 55406

Telephone Number: 612-728-3772 (cell - 612-801-1935)

E-mail Address: dloon@mn.rr.com

FAX Number: 612-728-0700

Web Page address: NA

Location: Within mapped Focus Area and within the counties of Carver, LeSueur, Scott and Sibley. See Figure 1.

Total Biennial LCMR Project Budget:	LCMR Appropriation:	\$230,000
	Minus Amount Spent:	\$230,000
	Equal Balance:	\$ 0

Legal Citation: ML 2005, 1st Spec. Sess., Chap. 1, Article 2, Sec. 11, Subd. 5b.

Appropriation Language: Metropolitan Area Wildlife Corridors – Phase II. \$1,765,000 the first year and \$1,765,000 the second year are from the trust fund to the commissioner of natural resources for the second biennium for acceleration of agency programs and cooperative agreements with the Trust for Public Land, Ducks Unlimited, Inc., Friends of the Mississippi River, Great River Greening, Minnesota Land Trust, Minnesota Valley National Wildlife Refuge Trust, Inc., Pheasants Forever, Inc. and Friends of the Minnesota Valley for the purposes of planning, improving, and protecting important natural areas in the metropolitan region, as defined by Minnesota Statutes, section 473.121, subdivision 2 and portions of the surrounding counties, through grants, contracted services, conservation easements, and fee acquisition. Land acquired with this appropriation must be sufficiently improved to meet at least minimum management standards as determined by the commissioner of natural resources. Expenditures are limited to the identified project areas as defined in the work program. This appropriation may not be used for the purchase of residential structures, unless expressly approved in the work program. Any land acquired in fee title by the commissioner of natural resources with money from this appropriation must be designated: (1) as an outdoor recreation unit under Minnesota Statutes, section 86A.07; or (2) as provided in Minnesota Statutes, sections 89.018, subdivision 2, paragraph (a); 97A.101; 97A.125; 97C.001; and 97C.011. The commissioner may similarly designate any lands acquired in less than fee title. This appropriation is available until June 30, 2008, at which time the project must be completed and final products delivered, unless an earlier

date is specified in the work program.

II. PROJECT SUMMARY AND RESULTS:

The Minnesota Valley National Wildlife Refuge Trust, Inc. completed fee title acquisition on July 28, 2006 of approximately 174 acres of significant habitat in the Minnesota River Valley within the County of Sibley. The tract consists of 15 acres of oak savanna, 16 acres of high quality wet prairie, 97 acres of floodplain forest and 46 acres of cropland.

The oak savanna is located in the floodplain of the Minnesota River, which is very rare. The oak trees in the floodplain will provide an important seed source for future oak plantings in higher sections of the floodplain. The wet prairie is very high quality with numerous species of plants. This property will provide an important parcel of connecting forest and prairie habitat in the Minnesota River bottoms. It will benefit many species of wildlife including wood ducks, mallards, bald eagles, grassland nesting birds as well as numerous resident game species such as turkeys and deer. The tract also contains numerous oxbow wetlands.

The land will be donated to the US Fish and Wildlife Service for management by the Minnesota Valley National Wildlife Refuge.

IV. OUTLINE OF PROJECT RESULTS:

Result 1: Fee acquisition of significant habitat in the Minnesota River Valley.

Summary Budget Information for Result 1:	LCMR Budget	\$230,000
	Balance	\$ 0
	Other Funds	\$428,000

Final Report Summary: The Minnesota Valley National Wildlife Refuge Trust, Inc. completed fee title acquisition on July 28, 2006 of approximately 174 acres of significant habitat in Project Area 10 (the Minnesota River Valley). These lands will be transferred to the US Fish and Wildlife Service for management as part of the Minnesota Valley National Wildlife Refuge. The total fee title acquisition cost was \$650,000, plus approximately \$8,000 in costs associated with title commitment, legal and closing.

TOTAL LCMR PROJECT BUDGET:

All Results: Personnel: \$0
All Results: Equipment: \$ 0
All Results: Development: \$0
All Results: Acquisition: \$230,000
All Results: Other: \$0

TOTAL LCMR PROJECT BUDGET: \$230,000

Explanation of Capital Expenditures Greater Than \$3,500: NA

V. OTHER FUNDS & PARTNERS:

A. Project Partners: US Fish and Wildlife Service

B. Other Funds being Spent during the Project Period: Source of other funds is the Minnesota Valley National Wildlife Refuge Trust, Inc.

C. Required Match (if applicable): NA

D. Past Spending: \$290,000 through Metropolitan Area Wildlife Corridors I, spent on August 9, 2005 to help acquire 320 acres in the Minnesota River Valley in Carver County.

E. Time: 3 years, until June 30, 2008.

VII. DISSEMINATION: The Minnesota Valley Trust will publicize the completion of this acquisition and plans for the lands through its newsletter and news releases to the local media. After the land is donated to the Minnesota Valley Refuge, the USFWS will publicize progress on the restoration efforts, development of trails and opportunities for public use and environmental education through news releases and updates to its website. All funding partners will be acknowledged on Refuge kiosks, including the Environment and Natural Resources Trust Fund, as recommended by the Legislative Commission on Minnesota Resources.

VIII. REPORTING REQUIREMENTS: No further reports will be submitted.

IX. RESEARCH PROJECTS: NA

Attachment A: Budget Detail for 2005 Metro Corridors Project

date: August 1, 2006

Project Title: Metropolitan Area Wildlife Corridors – Phase II: 3.3 Fee acquisition of significant habitat in the Minnesota River Valley.

Project Manager Name: Deborah Loon

LCMR Requested Dollars: \$230,000

BUDGET ITEM	Amount Budgeted (\$)	Amount Spent (\$)	Balance (\$)	Comments
ACQUISITION				
Land acquisition (<i>fee title & conservation easement</i>)	\$230,000	\$ 230,000.00	\$ -	Fee title acquisition
Land transaction costs (<i>e.g. survey, title, appraisal, environmental, & legal</i>)	\$ -		\$ -	
ACQUISITION - SUBTOTAL	\$ 230,000.00	\$ 230,000.00	\$ -	
TOTAL LCMR Funding	\$ 230,000.00	\$ 230,000.00	\$ -	

**LCCMR Final Work Program Report – 2005
Metropolitan Area Wildlife Corridors – Phase II**

Date of Report: September 9, 2008
LCMR Work Program Update Report: NA
Date of Next Status Report: June 30, 2008
Date of Work program Approval: July, 2005
Project Completion Date: June 30, 2008

I. PROJECT TITLE: Metropolitan Area Wildlife Corridors – Phase II: DNR Fish & Wildlife Acquisition & Development (3.5)

Project Manager: Mike Halverson
Affiliation: Minnesota Department of Natural Resources – Division of Fish & Wildlife
Mailing Address: Box 20, 500 Lafayette Road
City / State / Zip : St. Paul, MN 55155
Telephone Number: (651) 259-5209
E-mail Address: Mike.Halverson@dnr.state.mn.us
FAX Number: (651) 297-4916
Web Page address: *www.dnr.state.mn.us*

Location: Within the mapped Southeast and East Focus Areas, including Dakota, Goodhue, parts of Winona, Chisago, and Washington Counties. See Figure 1.

Total Biennial LCMR Project Budget:	LCMR Appropriation:	\$290,000
	Minus Amount Spent:	<u>\$290,000</u>
	Equal Balance:	<u>\$ 0</u>

Legal Citation: ML 2005 First Special Session, Chap. 1, Art. 2, Sec. 11, Subd. 5B.

Appropriation Language: Metropolitan Area Wildlife Corridors – Phase II. \$1,765,000 the first year and \$1,765,000 the second year are from the trust fund to the commissioner of natural resources for the second biennium for acceleration of agency programs and cooperative agreements with the Trust for Public Land, Ducks Unlimited, Inc., Friends of the Mississippi River, Great River Greening, Minnesota Land Trust, Minnesota Valley National Wildlife Refuge Trust, Inc., Pheasants Forever, Inc. and Friends of the Minnesota Valley for the purposes of planning, improving, and protecting important natural areas in the metropolitan region, as defined by Minnesota Statutes, section 473.121, subdivision 2 and portions of the surrounding counties, through grants, contracted services, conservation easements, and fee acquisition. Land acquired with this appropriation must be sufficiently improved to meet at least minimum management standards as determined by the commissioner of natural resources. Expenditures are limited to the identified project areas as defined in the work program. This appropriation may not be used for the purchase of residential structures, unless expressly approved in the work program.

Any land acquired in fee title by the commissioner of natural resources with money from this appropriation must be designated: (1) as an outdoor recreation unit under Minnesota Statutes, section 86A.07; or (2) as provided in Minnesota Statutes, sections 89.018, subdivision 2, paragraph (a); 97A.101; 97A.125; 97C.001; and 97C.011. The commissioner may similarly designate any lands acquired in less than fee title. This appropriation is available until June 30, 2008, at which time the project must be completed and final products delivered, unless an earlier date is specified in the work program.

II. and III FINAL PROJECT SUMMARY:

This project resulted in fee title acquisition of two additional parcels on the Vermillion River in Dakota County, a parcel on Rush Lake in Washington County, and a parcel on Brown’s Creek in Washington County. Totals for the four acquisitions equal 135.2 acres, including 1.42 total miles of shoreline. One of the parcels on the Vermillion River was also paid for with Phase III acquisition dollars, resulting in both acres and miles being divided proportionately between the two phases. As part of this project, Environmental and Natural Resources Trust dollars (\$265,000) directly acquired approximately 103.9 acres of the total, including 1.15 miles of stream. Other state dollars (\$30,000) acquired approximately 3.7 acres, including 0.03 miles of stream. Other non-state dollars (\$222,000) acquired approximately 27.6 acres, including 0.24 miles of stream.

As part of this project, Environmental and Natural Resources Trust dollars (\$25,000) directly resulted in site clean-up, access, parking areas, and gates on Parcels acquired during Phase I.

Professional Services costs for Phase II acquisitions totaled \$30,000

IV. OUTLINE OF PROJECT RESULTS

Result 1: Fish and Wildlife Land Acquisition

Allocation \$265,000 Balance \$0

The acquisition of wildlife management areas and aquatic management areas adjacent to lakes and streams will ensure the protection of critical riparian habitat, angler access, and management access. The monies will be used to secure fee title or easements on approximately 50 acres and/or 2 miles of lakeshore and stream shoreline including sensitive watershed, riparian, or headwaters areas. These lands will be used for angler access and protection of critical habitats. Spending of trust monies and parcel information will be reported as it occurs under each result.

<u>Program Area/Result</u>	<u>Trust Dollars Spent</u>	<u>Trust Accomplishments</u>
Southeast Area	<u>\$ 175,990</u>	<u>94.1 acres with 1.05 miles of shoreline</u>
East Area	<u>\$ 90,010</u>	<u>41.1 acres with 0.37 miles of shoreline</u>

Professional services in the amount of approximately \$30,000 related to land acquisition is included. (Southeast area = \$15,990 East Area = \$14,010)

Completion Date: June 30, 2008

Description: The monies will be used to secure fee title or easements on approximately 50 acres and/or 2 miles of lakeshore and stream shoreline including sensitive watershed, riparian, or headwaters areas. These lands will be used for angler access and protection of critical habitats.

Southeast Area

Vermillion River, Parcel 2, Dakota County

Trust Acres	Trust Miles	Trust \$	Other St. \$	Other \$	Other St. Acres	Other St. Miles	Other Acres	Other Miles	Total Acres	Total Miles
1.1	0.02	\$5,000	\$0.00	0	0	0	0	0	1.1	0.02

Vermillion River, Parcel 4, Dakota County

Trust Acres	Trust Miles	Trust \$	Other St. \$	Other \$	Other St. Acres	Other St. Miles	Other Acres	Other Miles	Total Acres	Total Miles
8.7	0.08	\$70,000	\$30,000	\$222,000	3.73	0.03	27.57	0.24	40	0.35

East Area

Chisago, East Rush Lake, Parcel 1

Trust Acres	Trust Miles	Trust \$	Other St. \$	Other \$	Other St. Acres	Other St. Miles	Other Acres	Other Miles	Total Acres	Total Miles
92.8	0.98	\$100,000	\$0.00	0	0	0	0	0	92.8	0.97

Washington, Browns Creek, Parcel 5

Trust Acres	Trust Miles	Trust \$	Other St. \$	Other \$	Other St. Acres	Other St. Miles	Other Acres	Other Miles	Total Acres	Total Miles
1.3	0.08	\$60,000	0		0	0	0	0	1.3	0.08

Total

103.9	1.15	\$235,000	\$30,000	\$222,000	3.73	0.03	27.58	0.24	135.2	1.42
-------	------	-----------	----------	-----------	------	------	-------	------	-------	------

Professional Services Total:

Grand Total (Trust only) \$ 30,000

Result 2: Fish and Wildlife Land Acquisition Development

Allocation \$25,000

Balance \$ 0

This project will bring lands purchased with Metropolitan Area Wildlife Corridors dollars up to minimum management standards. Dollars will be used for improvements such as site clean-up, access, parking areas, gates, and habitat improvement. Development will be conducted on lands acquired with both Metropolitan Area Wildlife Corridors Phase I and Phase II dollars.

Program Area/Result	Trust Dollars Spent	Trust Accomplishments
Southeast Area	\$25,000	site clean-up, access, parking areas, gates

Acquisition Total:	\$265,000
Professional Services Total:	\$ 30,000
Development Total:	\$ 25,000
Grand Total expenditures:	\$290,000
Remaining funds	\$ 0

TOTAL LCMR PROJECT BUDGET: \$290,000

V. OTHER FUNDS & PARTNERS: Other Fish & Wildlife funds may be used to compliment LCMR monies, including, Trout Stamp, Heritage, RIM, or Fish & Wildlife Bonding.

A. Project Partners: See Table 1.

B. Other Funds being Spent during the Project Period:

<u>Year</u>	<u>Funding Source</u>	<u>Fisheries</u>	<u>Wildlife</u>
2003	ETF* – Metro	\$ 384,000	\$ 240,000
2005	ETF	\$1,050,000	\$10,000,000
Total		\$1,434,000	\$10,240,000

C. Required Match (if applicable): NA

D. Past Spending:

<u>Year</u>	<u>Funding Source</u>	<u>Fisheries</u>	<u>Wildlife</u>
1995	ETF*	\$ 300,000	\$ 510,000
1995	ERF**		\$ 140,000
1997	ETF	\$ 567,000	\$ 500,000
2001	ETF	\$2,000,000	
2003	ETF – Metro	\$ 384,000	\$ 240,000
2003	ETF – Outstate	\$ 600,000	
Total		\$3,851,000	\$1,390,000

*Environment and Natural Resources Trust Fund

**Future Resources Fund

E. Time: 3 years, until June 30, 2008.

VII. DISSEMINATION: Metro Corridors will periodically distribute information about the program through the widely broadcasted emails to people on the Regional Greenways Collaborative (RGC) database, through the RGC quarterly meetings,

and jointly held county meetings. As projects are completed, Counties will be notified and acquisitions will be published in the State Register.

VIII. REPORTING REQUIREMENTS: Periodic work program progress reports will be submitted not later than February 1st and August 1st each year, starting with February 1st, 2006. A final work program report will be submitted by July 1st, 2008.

IX. RESEARCH PROJECTS: NA

2005 Project Abstract

For the Period Ending June 30, 2006

TITLE: Metropolitan Area Wildlife Corridors – Phase II: 3.7. Forest Legacy Conservation Easement Acquisition

PROJECT MANAGER: Peggy Booth

ORGANIZATION: Minnesota Department of Natural Resources

ADDRESS: 1200 Warner Rd, St Paul, MN 55106

WEB SITE ADDRESS: <http://www.dnr.state.mn.us/snas/index.html>

FUND: Environment and Natural Resources Trust Fund

LEGAL CITATION: ML 2005, 1st Spec. Sess., Chap. 1, Art. 2, Sec. 11, Subd. 5b.

APPROPRIATION AMOUNT: \$20,000

Overall Project Outcome and Results

This appropriation continued an effort begun through a 2003 Metro Corridors Forest Legacy project funded by the Environment and Natural Resources Trust Fund. In total, a 42.5-acre conservation easement acquired through this project protects the 55-acre environmentally and historically significant Arcola Mills site (May Township, Washington County). The Environmental and Natural Resources appropriation acquired almost 20% of the \$1 million easement value (2003 appropriation: 7.29 acres and 2005 appropriation: .85 acres) and leveraged a 50% easement value contribution by the landowner, 10% value locally contributed by Washington County, and another 20% through Metro Greenways state bonding funds.

A full description of the project outcome and results is included with the 2003 project abstract and report.

Acquisition of the conservation easement assures that none of the site's significant natural resources will be lost to development and provided funds to the Arcola Mills Historic Foundation to enhance resource interpretation and conservation at the site.

Project Results Use and Dissemination

Project information has acknowledged contributions from the Environmental and Natural Resources Trust Fund.

LCMR 2005 Work Program

Date of Report: June, 30 2006
LCMR Final Work Program Report

I. PROJECT TITLE: Metropolitan Area Wildlife Corridors – Phase II: 3.7 Forest Legacy Conservation Easement Acquisition

Project Manager: Margaret (Peggy) Booth
Affiliation: Mn Department of Natural Resources – Division of Forestry
Mailing Address: 1200 Warner Road
City / State / Zip : St. Paul, MN 55106
Telephone Number: 651-772-7562 (note: Peggy's # is now 651-259-5088)
E-mail Address: peggy.booth@dnr.state.mn.us
FAX Number: 651-772-7977
Web Page address: www.dnr.state.mn.us

Total Biennial LCMR Project Budget:	LCMR Appropriation:	\$ 20,000
	Minus Amount Spent:	\$ 20,000
	Equal Balance:	\$ 0

Legal Citation: ML 2005, 1st Spec. Sess., Chap. 1, Art. 2, Sec. 11, Subd. 5b.

Appropriation Language: Metropolitan Area Wildlife Corridors – Phase II. \$1,765,000 the first year and \$1,765,000 the second year are from the trust fund to the commissioner of natural resources for the second biennium for acceleration of agency programs and cooperative agreements with the Trust for Public Land, Ducks Unlimited, Inc., Friends of the Mississippi River, Great River Greening, Minnesota Land Trust, Minnesota Valley National Wildlife Refuge Trust, Inc., Pheasants Forever, Inc. and Friends of the Minnesota Valley for the purposes of planning, improving, and protecting important natural areas in the metropolitan region, as defined by Minnesota Statutes, section 473.121, subdivision 2 and portions of the surrounding counties, through grants, contracted services, conservation easements, and fee acquisition. Land acquired with this appropriation must be sufficiently improved to meet at least minimum management standards as determined by the commissioner of natural resources. Expenditures are limited to the identified project areas as defined in the work program. This appropriation may not be used for the purchase of residential structures, unless expressly approved in the work program. Any land acquired in fee title by the commissioner of natural resources with money from this appropriation must be designated: (1) as an outdoor recreation unit under Minnesota Statutes, section 86A.07; or (2) as provided in Minnesota Statutes, sections 89.018, subdivision 2, paragraph (a); 97A.101; 97A.125; 97C.001; and 97C.011. The commissioner may similarly designate any lands acquired in less than fee title. This appropriation is available until June 30, 2008, at which time the project must be completed and final products delivered, unless an earlier date is specified in the work program

II & III. FINAL PROJECT SUMMARY:

This appropriation continued an effort begun through a 2003 Metro Corridors Forest Legacy project funded by the Environment and Natural Resources Trust Fund. In total, a 42.5-acre conservation easement acquired through this project protects the 55-acre environmentally and historically significant Arcola Mills site (May Township, Washington County). The Environmental and Natural Resources appropriation acquired almost 20% of the \$1 million easement value (2003 appropriation: 7.29 acres and 2005 appropriation: .85 acres) and leveraged a 50% easement value contribution by the landowner, 10% value locally contributed by Washington County, and another 20% through Metro Greenways state bonding funds.

A full description of the project outcome and results is included with the 2003 project abstract and report.

Acquisition of the conservation easement assures that none of the site’s significant natural resources will be lost to development and provided funds to the Arcola Mills Historic Foundation to enhance resource interpretation and conservation at the site.

IV. OUTLINE OF PROJECT RESULTS

Result 1: Acquire Significant Habitat

Summary Budget Information for Result 1:	LCMR Budget	\$20,000
	Amount Spent:	\$20,000
	Balance:	\$ 0

Completion Date: June 30, 2006

Final Report Summary:

A 42.5-acre conservation easement acquired through this project protects the 55-acre environmentally significant Arcola Mills site in May Township, Washington County. This Environmental and Natural Resources Trust Fund appropriation contributed about 2% of the funding (.85 acres). The funding package assembled by Metro Conservation Corridors partnership and the resulting acreage acquired by funding source is listed in a table included in the 2003 LCMR Final Report for Metropolitan Area Wildlife Corridors – Forest Legacy (3.6). Statements of the project’s significance, scope, and shortcomings are also discussed in that Final Report.

V. TOTAL LCMR PROJECT BUDGET:

- All Results: Personnel: \$0**
- All Results: Equipment: \$0**
- All Results: Development: \$0**

All Results: Acquisition: \$20,000 (conservation easement)
All Results: Other: \$0

TOTAL LCMR PROJECT BUDGET: \$20,000

Explanation of Capital Expenditures Greater Than \$3,500: NA

V. OTHER FUNDS & PARTNERS:

A. Project Partners: See Table 1.

B. Other Funds being Spent during the Project Period: The budget for acquisition of a 42.5 acre conservation easement at Arcola Mills was: \$197,000 2003 LCMR for Forest Legacy, \$20,000 2005 LCMR for Forest Legacy, about \$207,000 from the DNR Metro Greenways Program (2002 and 2005 bonding), \$100,000 from Washington County, and \$500,000 donation by the Arcola Mills HistoricFoundation.

C. Required Match (if applicable): NA

D. Past Spending: 2003 LCMR for Forest Legacy: \$ 197,000 – used as needed for appraisal and related real estate transaction costs. Arcola Mills applied for federal Forest Legacy funding in fall 2004, but was not selected for funding.

E. Time: 3 years, until June 30, 2008.

VII. DISSEMINATION: When the Lower St. Croix Forest Legacy was completed, DNR Regional Operations and Arcola Mills Foundation cooperated to publicize accomplishments through press releases, Arcola Mills publications and website and DNR publications.

VIII. REPORTING REQUIREMENTS: Periodic work program progress reports were submitted February 1st and August 1st each year, starting with February 1st, 2006.

IX. RESEARCH PROJECTS: NA

Attachment A: Budget Detail for 2005 Metro Corridors Project

FINAL REPORT

Project Title: MWC Phase II: 3.7. Forest Legacy Conservation Easement Acquisition

Project Manager Name: Margaret (Peggy) Booth

LCMR Requested Dollars: \$ 20,000

BUDGET ITEM	Amount Budgeted (\$)	Amount Spent (\$)	Balance (\$)	Comments
DEVELOPMENT				
Land improvement			\$ -	
DEVELOPMENT - SUBTOTAL			\$ -	
ACQUISITION				
Land acquisition (<i>fee title & conservation easement</i>)		\$ 20,000.00		<i>conservation easement acquisition</i>
Land transaction costs (<i>e.g. survey, title, appraisal, environmental, & legal</i>)			\$ -	
ACQUISITION - SUBTOTAL	\$ 20,000.00	\$ 20,000.00		
TOTAL LCMR Funding	\$ 20,000.00	\$ 20,000.00	\$ -	