




---

---

---

---

---

---

---

---

### 12 Elected Members

Body	First Name	Last Name	Party	District	Home
Sen	Paul	Anderson	R	44	Plymouth
Rep	David	Bly	DFL	20B	Northfield
Sen	Rich	Draheim	R		Madison Lake
Sen	Kent	Eken	DFL	4	Twin Valley
Rep	Peter	Fischer	DFL	43A	Maplewood
Rep	Glenn	Gruenhagen	R	18B	Glencoe
Sen	Jason	Isaacson	DFL	19A	Shoreview
Rep	Clark	Johnson	DFL	19A	N. Mankato
Rep	John	Poston	R	9A	Lake Shore
Rep	Paul	Torkelson*	R	16B	Hanska
Sen	Bill	Weber	R	22	Luverne
Sen	Chuck	Wiger*	DFL	43	Maplewood

---

---

---

---

---

---

---

---

- ### Statutory Powers and Duties
- **REVIEW** agency water policy reports & recommendations
  - **GATHER** data and comments
  - **MAKE RECOMMENDATIONS** to assist the legislature in formulating legislation
  - **SHARE** data & information with LCCMR, CWC, legislative standing committees, upon request
  - **COORDINATE**

---

---

---

---

---

---

---

---



---

---

---

---

---

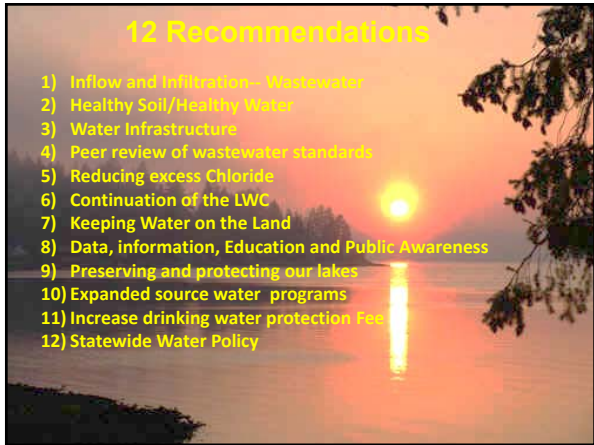
---

---

---

---

---



---

---

---

---

---

---

---

---

---

---



---

---

---

---

---

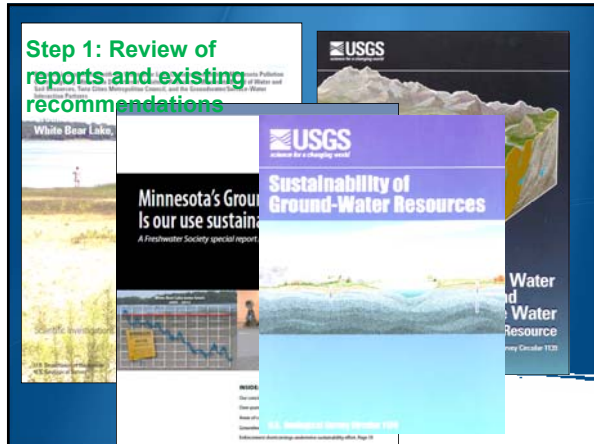
---

---

---

---

---



---

---

---

---

---

---

---

---



---

---

---

---

---

---

---

---



---

---

---

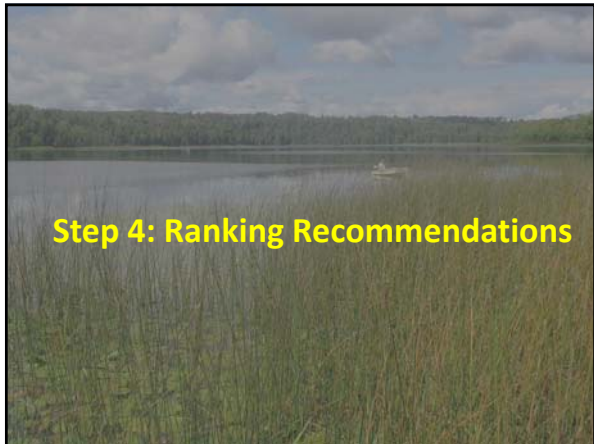
---

---

---

---

---



### Step 4: Ranking Recommendations

---

---

---

---

---

---

---

---



### 12 Recommendations

- 1) Inflow and Infiltration-- Wastewater
- 2) Healthy Soil/ Healthy Water
- 3) Water Infrastructure
- 4) Peer review of wastewater standards
- 5) Reducing excess Chloride
- 6) Continuation of the LWC
- 7) Keeping Water on the Land
- 8) Data, information, Education and Public Awareness
- 9) Preserving and protecting our lakes
- 10) Expanded source water programs
- 11) Increase drinking water protection Fee
- 12) Statewide Water Policy

---

---

---

---

---


---

---

---

### # 1) Wastewater: Inflow and Infiltration

- Leakage into sewer lines is a Major problem
- Increases treatment volumes
- Reduces treatment efficiency



Legislation to allow sanitary districts use of existing revenue to fix these problem-- as cities can

---

---

---

---

---

---

---

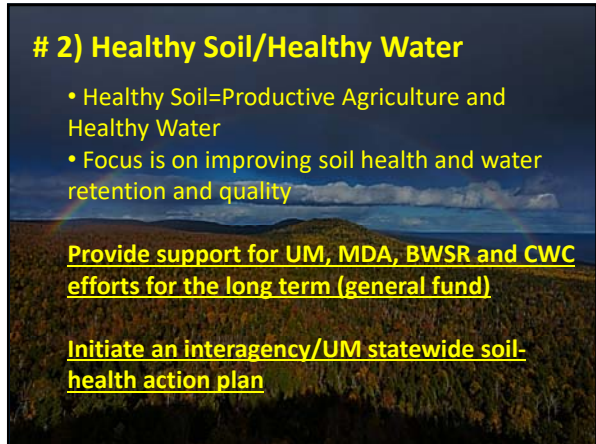
---

**# 2) Healthy Soil/Healthy Water**

- Healthy Soil=Productive Agriculture and Healthy Water
- Focus is on improving soil health and water retention and quality

Provide support for UM, MDA, BWSR and CWC efforts for the long term (general fund)

Initiate an interagency/UM statewide soil-health action plan




---

---

---

---

---


---

---

---

**# 3) Improve Water Infrastructure**

- Water infrastructure is aging
- Significant problem for small cities



Support long-term continuous GO bonding

New and increased support for cities: efficiencies, alternatives, technical assistance, asset management, regional cooperation, water-quality trading, incentives for failing septic systems

General Funds: coordinate with and increase ongoing programs and pilots: PFA, MPCA, MDH, PFA

---

---

---

---

---

---

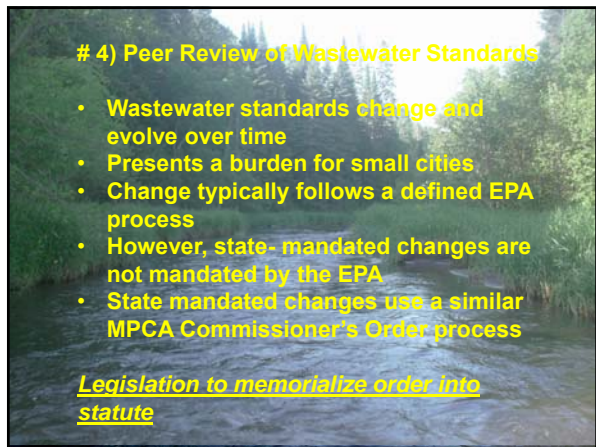
---

---

**# 4) Peer Review of Wastewater Standards**

- Wastewater standards change and evolve over time
- Presents a burden for small cities
- Change typically follows a defined EPA process
- However, state-mandated changes are not mandated by the EPA
- State mandated changes use a similar MPCA Commissioner's Order process

Legislation to memorialize order into statute




---

---

---

---

---

---

---

---

### # 5) Over-Use of Chloride Deicers

- Chloride is over applied in some areas
- Degrades streams and groundwater
- Septic systems and water softening contribute to the problem
- MDOT and cities have made good progress
- Commercial applicators need assistance

**General funds to continue applicator training**

**Extend training statewide (MPCA)**

**Legislation: limited liability for qualified applicators**

**Assess other sources**




---

---

---

---

---

---

---

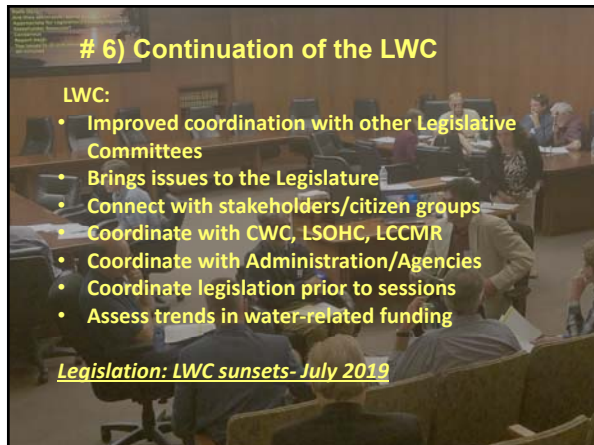
---

### # 6) Continuation of the LWC

**LWC:**

- Improved coordination with other Legislative Committees
- Brings issues to the Legislature
- Connect with stakeholders/citizen groups
- Coordinate with CWC, LSOHC, LCCMR
- Coordinate with Administration/Agencies
- Coordinate legislation prior to sessions
- Assess trends in water-related funding

**Legislation: LWC sunsets - July 2019**




---

---

---

---

---

---

---

---

### # 7--Keeping Water on the Land

- ❑ Most complex of the recommendations
- ❑ Water retention improves soil health, water quality and gw recharge

**Suggested needs:**

- Support agency evaluations of most effective BMPs, at the best locations
- Increase general fund obligation for targeted/efficient/incentivized BMPs
- Determine extent and impact of tile drains
- Support ROI evaluations of BMPs
- Support consensus positions from the DWG
- Increase incorporation of BMPs in 1 watershed/1 plan
- Evaluate urban BMPs
- Revise HF3908 to include local water planning and implementation to include TMDLs, WRAPs, and 1W/1 Plan
- Expand pilot pollutant trading following LCCMR pilots
- Create trading credit- exchange vehicle

**Expand and fund expansion of agency programs**

**Increase general funding**

**Create interagency/watershed efforts to coordinated plans**




---

---

---

---

---

---

---

---

### # 8: Ensuring Water Sustainability--Information, Education and Awareness

- Enhance continue County Atlas Programs
- Increase information about gw/sw interaction
- Improve understanding or water bank accounts
- Incorporate water balances analysis in Co Atlas and 1W/Plan processes
- Expand gw management area assessments
- Increase educational and outreach activities
- **Legislative direction and funding for existing agency, MGS and watersheds**




---

---

---

---

---

---

---

---

### #9 Lakes—Preserve and Protect

- ❑ MN lakes are aging and threatened
- ❑ We can't protect all of them
- Policy is needed
- Protect and preserve the most important: ex Cold water lakes
- Strategic data collection- Sentinel lakes
- Establish lake priorities
- Increase conservation easement for priority lakes
- Accelerate efforts to control invasive species
- *Prepare management strategy for uncertain future*
- *Increase and coordinate agency programs*
- *Increase general fund support*

---

---

---

---

---

---

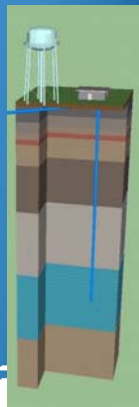
---

---

### # 10: Expand Source Water Protection (MDH)

- Expand programs to rivers
- Include aquifers-- private wells
- Identify most vulnerable aquifers
- Increase real-time monitoring for rivers Improve public information and outreach
- Support CWC's efforts to increase vegetative cover
- Encourage new markets

*Increase general fund obligations (MDH)*  
*Increase and coordinate agency programs*  
*Coordinate with CWC/ LCCMR*




---

---

---

---

---

---

---

---

### # 11—Increase Water Service Connection Fee

- Fee structure has been static
- Program costs have increased
- Increasing needs for condition assessments (Lead for example)
- Growing need for asset management plans

**Legislation needed to increase fees**



---

---

---

---

---

---

---

---

### # 12 Statewide Water Policy

- As a state, we need to plan for an uncertain future
- Provide adaptation plans for changes—long term roadmap
- Incorporate the other recommendations- Involve stakeholders
- Address emerging issues
- Balance water resource needs with economic health
- Consider:
  - Climate and weather changes
  - Infrastructure resiliency
  - Lake preservation
  - Water sustainability
  - Water quality
  - Mineral extraction
  - Population change
  - Land use Change and use change

Provide general funds and guidance for an interagency/legislative roadmap for future legislation and policy

23

---

---

---

---

---

---

---

---

### Member Consensus



24

---

---

---

---

---

---

---

---



### Next Steps

- ✓ **Revise Issue Statements**
- ✓ **Revise Recommendations**
- ✓ **Initial Consensus from LWC**
- ✓ **Feedback from Stakeholders**
- ✓ **Consolidate recommendations into recommendation themes**
  - LWC Consensus
  - Recommendations to Legislature
  - Legislative briefings with Environmental Committees/Agency staff

---

---

---

---

---

---

---

---



---

---

---

---

---

---

---

---