

CONSERVATION EASEMENT ASSESSMENT & VALUATION SYSTEM

Bonnie Keeler & Ryan Noe
Steve Polasky, Mike Kilgore, Steve Taff
M.L. 2015, Chp. 76, Sec. 2, Subd. 09k
ENRTF \$250,000
July 2015 to June 2018



INSTITUTE ON THE ENVIRONMENT UNIVERSITY OF MINNESOTA Driven to Discover
College of Food, Agricultural and Natural Resource Sciences UNIVERSITY OF MINNESOTA
HUMPHREY SCHOOL OF PUBLIC AFFAIRS UNIVERSITY OF MINNESOTA
natural capital PROJECT

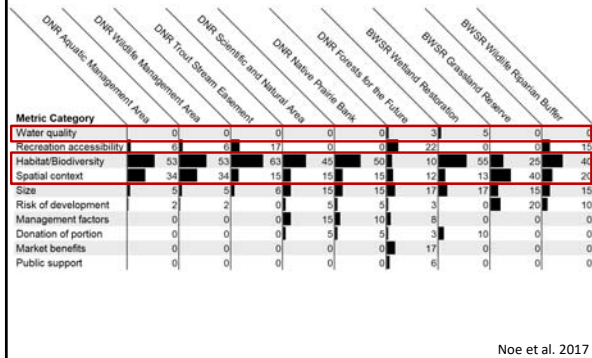


PROJECT ACTIVITIES

- 1) Review spatial targeting systems
- 2) Evaluate past easements
- 3) Develop a decision-support platform for prioritizing investments in future easements



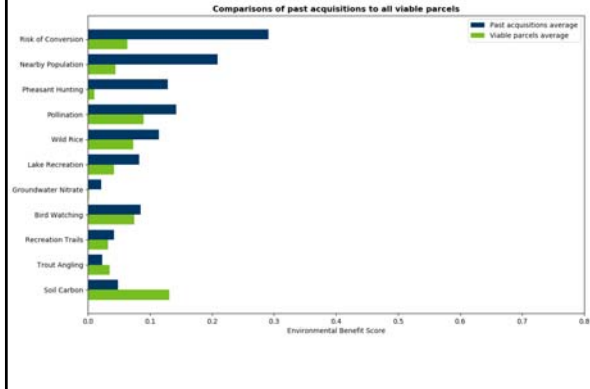
1) Review spatial targeting systems



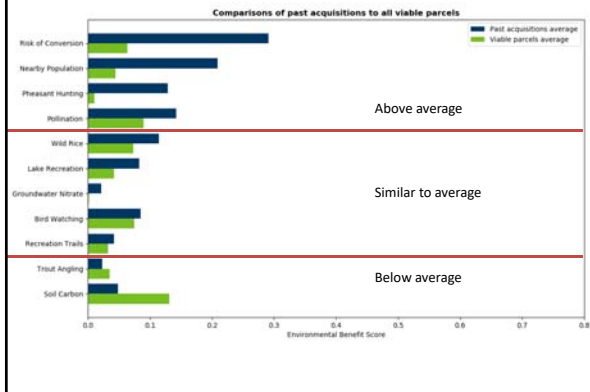
Obstacle in acquisition decision making	Our Solution
Limited capacity to perform analyses across a suite of services	Developed tools to score a parcel across a suite of benefits with no extra technical capacity
Scoring on a parcel-by-parcel basis lacks context	Landscape approach provides context and finds exceptional parcels that might not have been considered

Environmental Benefit Metrics:	
• Ground Water Nitrate Mitigation	• Wild Rice Production
• Lake recreation	• Pollination
• Trout Angling	• Trails
• Bird Watching	• Population within 50 miles
• Pheasant Production	• Risk of development
• Carbon Storage	

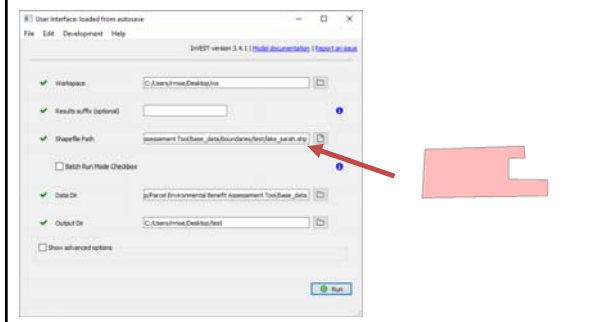
2) Evaluate past easements



2) Evaluate past easements



3) Develop a decision-support platform for prioritizing investments in future easements



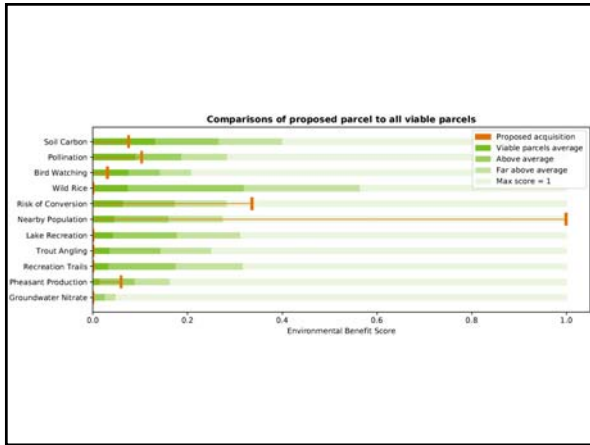
z.umn.edu/pebat

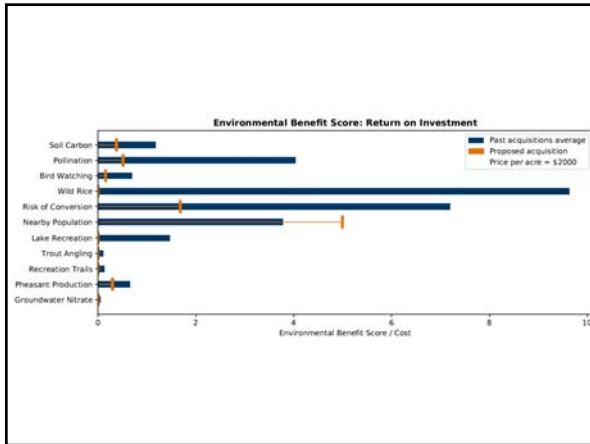
Submit details for parcel to be scored

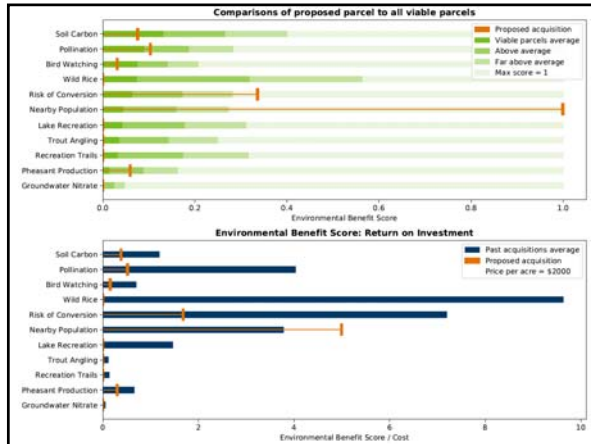
Address:
Enter address or latitude, longitude (comma separated)

Price per acre:
Enter price per acre (\$US). Leave blank for default of \$2000.

Submit









RECOMMENDATIONS

- 1) Consider human benefits in the prioritization of easements
- 2) To truly understand benefits, more info is needed on baseline conditions, risk of conversion, and management.
- 3) Adopt a portfolio approach that prioritizes multiple benefits.
- 4) Evaluate progress and impact over time.
- 5) Proactively identify goals and desired benefits.
- 6) Avoid random acts of conservation.




DISCUSSION

- 1) What metrics are missing from our scoring system?
- 2) What additional data or comparisons would you like to see in our final report?
- 3) Where can our metrics and tools be most useful to LCCMR?



**CONSERVATION EASEMENT
ASSESSMENT & VALUATION SYSTEM**

Bonnie Keeler & Ryan Noe
Keeler@umn.edu
RRNoe@umn.edu



INSTITUTE ON THE ENVIRONMENT UNIVERSITY OF MINNESOTA Driven to Discover
College of Food, Agricultural and Natural Resource Sciences UNIVERSITY OF MINNESOTA
HUMPHREY SCHOOL OF PUBLIC AFFAIRS UNIVERSITY OF MINNESOTA
natural capital PROJECT
